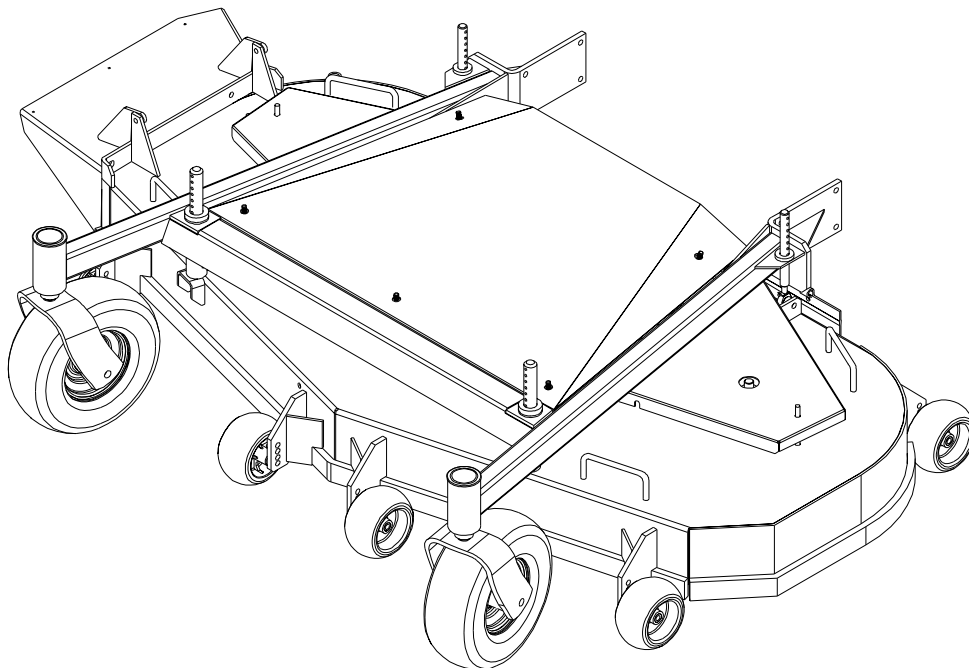


For Serial Nos.  
600,000 & Higher



# FMD524/FMD604

**CONGRATULATIONS** on the purchase of your new Exmark equipment. This product has been carefully designed and manufactured to give you a maximum amount of dependability and years of trouble-free operation. If additional information is needed, or should you require trained mechanic service, contact your authorized Exmark equipment dealer or distributor. If you need to order replacement parts from your dealer, always give the model number and serial number of your equipment as well as the part number, description and quantity of the part needed.

The Serial No. plate is located on the top of the deck in front of the right spindle. For ease of ordering and reference, we suggest that you record the information requested in the following identification table.

Place Model No. and Serial No. Label Here  
(Included in Literature Pack)  
or Fill in Below

Model No. \_\_\_\_\_

Serial No. \_\_\_\_\_

Date Purchased \_\_\_\_\_

OPERATOR'S & PARTS MANUAL

# EXMARK PARTS PLUS® PROGRAM

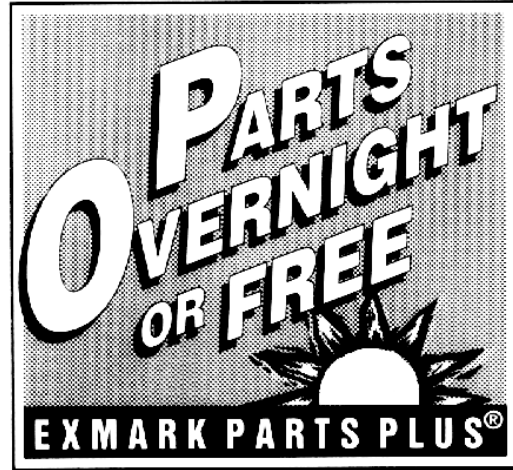
EFFECTIVE DATE: September 1, 1995

## Program

If your Exmark dealer does not have the Exmark part in stock, Exmark will get the parts to the dealer the next business day or the part will be FREE\* Guaranteed!!

## *How the Program Works*

1. If dealer does not have part in stock for a "down" unit at the time of request by customer, the dealer contacts his distributor by 1:00 p.m., local time, and requests Exmark Parts Plus® shipment of six (6) line items or less.
2. Distributor ships part(s) to dealer or customer, as requested by dealer, same day, overnight UPS. Distributor bills dealer for part and freight charges where applicable.
3. If distributor does not have the part(s) in stock to satisfy Exmark Parts Plus® order, he contacts Exmark by 3:00 p.m., central time, with an Exmark Parts Plus® order of six (6) line items or less.
4. If order is received by 3:00 p.m. central time, Exmark ships part(s) direct to dealer or customer, as requested by distributor, same day, overnight UPS, Exmark bills the distributor for parts and shipping charges, where applicable.
5. The customer pays for the part and freight if it is shipped under the Exmark Parts Plus® and if it arrives in accordance to the program.
6. Who pays for the part and freight if it fails to arrive overnight in accordance to the program?
  - A. Under any circumstance the customer does not pay.
  - B. If the part does not arrive overnight due to:
    1. The dealer not submitting the Exmark Parts Plus® order to his Exmark distributor by 1:00 p.m., the dealer pays for the part and freight.
    2. The Distributor being unable to ship the part the same day or not submitting the Exmark Parts Plus® order to Exmark by 3:00 p.m., central time, the Distributor pays for the part and freight.
    3. Exmark being unable to ship the part and the Exmark parts order is received by 3:00 p.m., central time, Exmark pays for the part and freight.
    4. If the part does not arrive overnight due to the shipper (UPS), the shipper pays for the freight and Exmark pays for the part.



**The following restrictions apply** -- The Exmark Parts Plus® Program is available only through participating Exmark Dealers and applies only to orders submitted on this program Monday through Thursday. Parts Plus service is available only in the 48 contiguous United States. UPS has initiated a Saturday delivery program to many areas of the continental United States and can be requested for an overnight shipment on Friday to be delivered Saturday. The next day air charge, plus the Saturday delivery fee will be the responsibility of the purchaser. Exmark Mfg. will assume no responsibility for Saturday delivery shipments. To qualify, all Exmark Parts Plus® orders must be received by Exmark by 3:00 p.m., central time. Orders must be six (6) line items or less. Exclusions from the Exmark Parts Plus® Program are: Any wholegood or accessory in its entirety, engines and engine replacement parts, 5-speed Peerless transmissions and 5-speed transaxles, hydraulic or hydrostatic wheel motors, cutter decks and engine decks or any item exceeding United Parcel Service size and weight restrictions.

Due to UPS restrictions, aerosol spray paint is considered a hazardous material and cannot be shipped via UPS next day or Second Day Air.

Exmark Manufacturing stocks a limited supply of parts for transaxles, pumps and wheel motors. These parts can be ordered for Next Day Air shipment but will not be guaranteed per the Parts Plus Program.



## WARNING

### POTENTIAL HAZARD

- ◆ This product is a piece of power equipment.

### WHAT CAN HAPPEN

- ◆ Failure to follow safe operating practices can result in serious operator injury or even death.

### HOW TO AVOID THE HAZARD

- ◆ Keep all shields, guards, and safety devices (especially the grass discharge system) in place and in proper working condition.
- ◆ Stop engine and wait for all moving parts to stop. Remove spark plug wire(s) or remove key before adjusting, servicing, or performing maintenance.
- ◆ If mower deck becomes clogged, stop engine and wait for all moving parts to stop. Remove spark plug wire(s) or remove key before cleaning blockage.
- ◆ Keep hands, feet, and clothing away from power driven parts.
- ◆ Keep off mower unless seat platform is provided.
- ◆ Keep others off mower.

**CONGRATULATIONS** on the purchase of your Exmark Cutting Deck. This product has been carefully designed and manufactured to give you a maximum amount of dependability and years of trouble-free operation.

## **OPERATOR'S MANUAL**

This manual contains assembly, operating, maintenance, adjustment, and safety instructions for your Cutting Deck.

### **BEFORE OPERATING YOUR MOWER, CAREFULLY READ THIS MANUAL IN ITS ENTIRETY.**

By following the operating, maintenance, and safety instructions, you will prolong the life of your equipment, maintain its maximum efficiency, and promote safe operation.

If additional information is needed, or should you require trained mechanic service, contact your authorized Exmark equipment dealer or distributor.

All Exmark equipment dealers and distributors are kept informed of the latest methods of servicing and are equipped to provide prompt and efficient service in the field or at their service stations. They carry ample stock of service parts or can secure them promptly for you from the factory.


All Exmark parts are thoroughly tested and inspected before leaving the factory, however, attention is required on your part if you are to obtain the fullest measure of satisfaction and performance.

# TABLE OF CONTENTS

	<b>PAGE</b>
<b>1. SAFETY</b>	
1.1 Safety Alert Symbol .....	1
1.2 Training .....	1
1.3 Preparation.....	1-2
1.4 Operation .....	2
1.5 Maintenance & Storage .....	2
1.6 Safety Signs .....	2-3
<b>2. SPECIFICATIONS</b>	
2.1 Model Number .....	3
2.2 Dimensions.....	3
2.3 Torque Requirements.....	4
<b>3. MAINTENANCE &amp; ADJUSTMENTS</b>	
3.1 Periodic Maintenance .....	4-7
3.2 Adjustments .....	8-9
<b>4. PARTS LIST</b>	
4.1 52" Deck Group FMD524 .....	10-11
4.2 60" Deck Group FMD604 .....	12-13
4.3 52" & 60 " Support Group FMD524 & FMD604 .....	14
<b>5. WARRANTY .....</b>	<b>15</b>

## 1. SAFETY

### 1.1 SAFETY ALERT SYMBOL

This SAFETY ALERT SYMBOL  is used both in this manual and on the unit to identify important safety messages which must be followed to avoid accidents. This symbol means:

**ATTENTION! BECOME ALERT!**  
**YOUR SAFETY IS INVOLVED!**

The safety alert symbol appears above information which alerts you to unsafe actions or situations and will be followed by the word **DANGER**, **WARNING**, or **CAUTION**.

**DANGER:** White lettering / Red background. Indicates an imminently hazardous situation which, if not avoided, **WILL** result in death or serious injury.

**WARNING:** Black lettering / Orange background. Indicates a potentially hazardous situation which, if not avoided, **COULD** result in death or serious injury.


**CAUTION:** Black lettering / Yellow background. Indicates a potentially hazardous situation which, if not avoided, **MAY** result in minor or moderate injury.

### 1.2 TRAINING

- 1.2.1 Regard the Exmark mower as a piece of power equipment and teach this regard to all who operate this unit.
- 1.2.2 Before operating your mower, read the tractor and cutting deck manual instructions carefully. Familiarize yourself with the controls and the proper use of the equipment. If the operator(s) or mechanic(s) can not read English, it is the owner's responsibility to explain this material to them.
- 1.2.3 Do not allow operation of this machine by untrained personnel. Never allow children, teenagers, or people unfamiliar with these instructions to use the mower. Local regulations may restrict the age of the operator.
- 1.2.4 Avoid mowing while people, especially children, or pets, are nearby. Keep in mind that the operator or user is responsible for accidents or hazards occurring to other people or their property.

### 1.3 PREPARATION

- 1.3.1 Do not modify the cutting deck and only use on approved Exmark machines.
- 1.3.2 The use of personal protective equipment, such as (but not limited to) protection for the eyes, ears, feet, and head is recommended.


 <b>CAUTION</b>	
POTENTIAL HAZARD	◆ This machine produces sound levels in excess of 85 dBA at the operator's ear when in operation.
WHAT CAN HAPPEN	◆ Exposure to sound levels of 85 dBA or above for extended periods of time can cause hearing loss.
HOW TO AVOID THE HAZARD	◆ Wear hearing protection when operating this machine.

- 1.3.3 While mowing, always wear substantial footwear and long trousers. Do not operate equipment when barefoot or when wearing open sandals.

- 1.3.4 Thoroughly inspect the area where the equipment is to be used and remove all stones, sticks, wires, bones, and other foreign objects which may damage the equipment or cause personal injury to the operator or bystanders.

## 1.4 OPERATION

***Although hazard control and accident prevention are partially dependent upon the design and configuration of the equipment, these factors are also dependent upon the awareness, concern, prudence, and proper training of the personnel involved in the operation, transport, maintenance, and storage of the equipment. It is essential that all Operator Safety Mechanisms be connected and in operating condition prior to use for mowing.***

 <b>WARNING</b>
<b>POTENTIAL HAZARD</b> <ul style="list-style-type: none"><li>◆ Hands, feet, hair, clothing, or accessories can become entangled in rotating parts.</li></ul>
<b>WHAT CAN HAPPEN</b> <ul style="list-style-type: none"><li>◆ Contact with rotating parts can cause traumatic amputation or severe lacerations.</li></ul>
<b>HOW TO AVOID THE HAZARD</b> <ul style="list-style-type: none"><li>◆ Do not operate the machine without guards, shields, and safety devices in place and working.</li><li>◆ Keep hands, feet, hair, jewelry, or clothing away from rotating parts.</li></ul>

- 1.4.1 Give complete, undivided attention to the job at hand.
- 1.4.2 Mow only in daylight or good artificial light, keeping away from holes and hidden hazards. **NEVER** carry passengers.
- 1.4.3 Use **EXTREME** caution when backing up. **LOOK BEHIND YOU!**
- 1.4.4 Stop the blades when crossing surfaces other than grass and when transporting the mower to and from the area to be mowed.
- 1.4.5 Never operate the mower with damaged guards, shields, or covers. Always have safety shields, guards, switches, and other devices in place and in proper working condition.

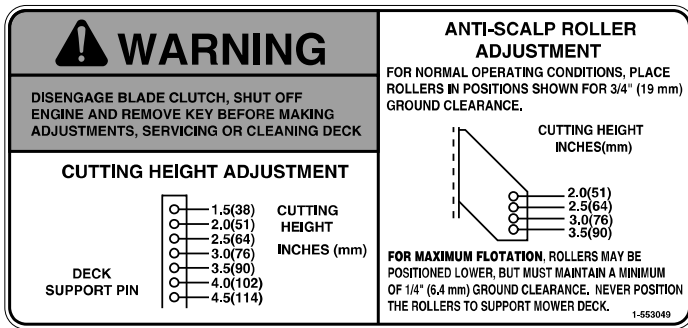
## 1.5 MAINTENANCE AND STORAGE

- 1.5.1 Check all bolts frequently to maintain proper tightness.
- 1.5.2 Keep all guards, shields, and all safety devices in place and in safe working condition.
- 1.5.3 Frequently check for worn or deteriorating components that could create a hazard.
- 1.5.4 All replacement parts must be the same as or equivalent to the parts supplied as original equipment.

## 1.6 SAFETY SIGNS

- 1.6.1 Keep all safety signs legible. Remove all grease, dirt and debris from safety signs and instructional labels.
- 1.6.2 Safety signs must be replaced if they are missing or illegible.
- 1.6.3 When new components are installed, be sure that current safety signs are affixed to the replaced components.
- 1.6.4 New safety signs may be obtained from Exmark Mfg. Co. Inc.
- 1.6.5 Safety signs may be affixed by peeling off the backing to expose the adhesive surface. Apply only to a clean, dry surface. Smooth to remove any air bubbles.

- 1.6.6 Familiarize yourself with the following safety signs and instruction labels. They are critical to the safe operation of your Exmark commercial mower.



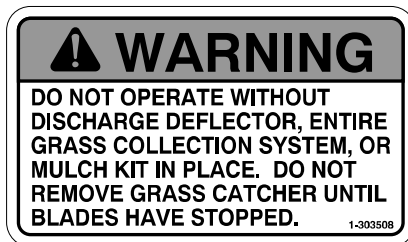
PART NO. 1-553049

LOCATION: On Top Front LH Surface of Mower Deck



PART NO. 1-403005

LOCATION: LH & RH Front Top Surface of Mower Deck



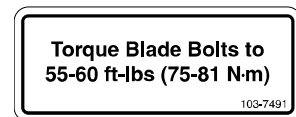
PART NO. 1-303508

LOCATION: On Top RH Surface of Mower Deck



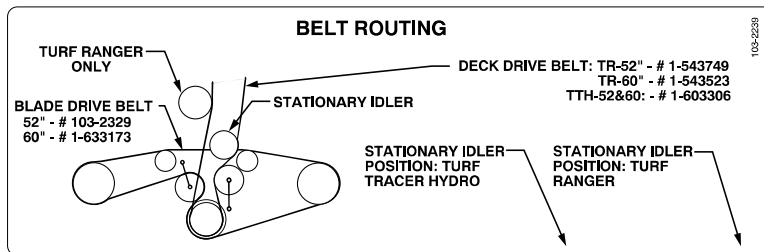
PART NO. 98-5954

LOCATION: Under LH, RH & Center Belt Shields



PART NO. 103-7491

LOCATION: On Top Front RH Surface of Mower Deck



PART NO. 103-2239

LOCATION: Top of Mower Deck Beneath Center Shield



PART NO. 103-1145

LOCATION: Top Front of Mower Deck on FMD524



PART NO. 103-1146

LOCATION: Top Front of Mower Deck on FMD604



## 2. SPECIFICATIONS

### 2.1 MODEL NUMBER: FMD524; FMD604

### 2.2 DIMENSIONS

	52" Deck	60" Deck
Overall Width	53.4" (135.6 cm)	61.4" (156.0 cm)
Overall Height	15.2" (38.6 cm)	15.2 (38.6 cm)
Overall Length	46.1" (117.1 cm)	46.1" (117.1 cm)
Weight	370 lbs. (168 kg)	416 lbs. (189 kg)


### 2.3 TORQUE REQUIREMENTS

#### Bolt Location

#### Torque

Cutter Housing Spindle Nut (secured with threadlocker)	140-145 ft-lbs. (190-197 N-m)
Blade Mounting Bolt.....	55-60 ft-lbs. (75-81 N-m)
Mower Deck Support/Engine Deck Mount .....	30-35 ft-lbs. (41-47 N-m)
Anti-Scalp Roller	
Hex Capscrew .....	50-55 ft-lbs. (68-75 N-m)
Nyloc Nut.....	30-35 ft-lbs. (41-47 N-m)

## 3. MAINTENANCE & ADJUSTMENTS

 <b>WARNING</b>
<b>POTENTIAL HAZARD</b> <ul style="list-style-type: none"><li>◆ While maintenance or adjustments are being made, someone could start the engine.</li></ul>
<b>WHAT CAN HAPPEN</b> <ul style="list-style-type: none"><li>◆ Accidental starting of the engine could seriously injure you or other bystanders.</li></ul>
<b>HOW TO AVOID THE HAZARD</b> <ul style="list-style-type: none"><li>◆ Remove the key from the ignition switch and pull the wire(s) off the spark plug(s) before you do any maintenance. Also push the wire(s) aside so it does not accidentally contact the spark plug(s).</li></ul>

### 3.1 PERIODIC MAINTENANCE

#### 3.1.1 Clean grass build-up under deck.

##### ***Service Interval: Daily***

- Stop engine, wait for all moving parts to stop, and remove key.
- Raise deck to the highest position. Lift the front of unit and support unit using jack stands or equivalent support.

## ! CAUTION

### POTENTIAL HAZARD

- ◆ Raising the mower deck for service or maintenance relying solely on mechanical or hydraulic jacks could be dangerous.

### WHAT CAN HAPPEN

- ◆ The mechanical or hydraulic jacks may not be enough support or may malfunction allowing the unit to fall, which could cause injury.

### HOW TO AVOID THE HAZARD

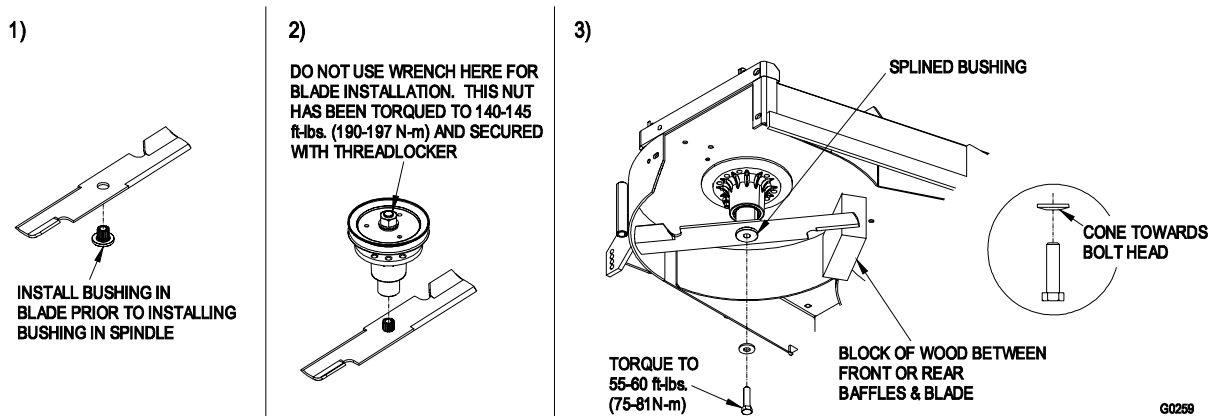
- ◆ DO NOT rely solely on mechanical or hydraulic jacks for support. Use adequate jack stands or equivalent support.

c) Clean out any grass build-up from underside of deck and in discharge chute.

#### 3.1.2 Check mower blades.

##### **Service Interval: Daily**

- a) Stop engine, wait for all moving parts to stop, and remove key.
- b) Lift deck and secure in raised position as stated in Section 3.1.1.
- c) Inspect blades and sharpen or replace as required.
- d) Re-install the blades (if they were removed) in the following order (See Figure 1).
  - 1) Install bushing through blade with bushing flange on bottom (grass) side of blade.
  - 2) Install bushing/blade combo into spindle.
  - 3) Install blade bolt and spring disc washer. Be sure the spring disc washer cone is installed towards the bolt head. Place a block of wood between front or rear baffles and the blade then torque the blade bolts to 55-60 ft-lbs. (75-81 N-m).



**FIGURE 1  
BLADE BOLT INSTALLATION**

**IMPORTANT: DO NOT** use components other than the original blade, blade bushing, spring disc washer, and blade bolt supplied with the unit. Failure to use all original components and assembled as shown will increase the risk of a blade bolt becoming loose or weak after striking a foreign object.

## ! CAUTION

### POTENTIAL HAZARD

- ◆ Operating a mower deck with loose or weakened blade bolts can be dangerous.

### WHAT CAN HAPPEN

- ◆ A loose or weakened blade bolt could allow a blade rotating at a high speed to come out from under the deck, causing serious injury or property damage.

### HOW TO AVOID THE HAZARD

- ◆ Always re-install original Exmark blades, blade bushings, spring disc washers, and blade bolts in the correct positions as shown.

#### 3.1.3 Check for loose hardware.

Service Interval: **Daily**

- a) Stop engine, wait for all moving parts to stop, and remove key.
- b) Visually inspect machine for any loose hardware or any other possible problem. Tighten hardware or correct the problem before operating.

#### 3.1.4 Inspect Belt wear.

Service Interval: **40 hrs.**

- a) Stop engine, wait for all moving parts to stop, and remove key.
- b) Remove the three mower deck belt shields to check mower primary and secondary belt condition.
- c) Look under engine deck to check the pump drive belt condition.
- d) Check all idler arms to be sure they pivot freely.

#### 3.1.5 Lubrication

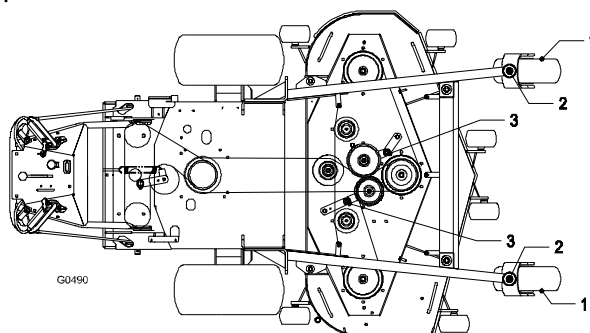
- a) Stop engine, wait for all moving parts to stop, and remove key.
- b) Lubricate fittings with one to two pumps of NGLI grade #2 multi-purpose gun grease.

Refer to the following chart for fitting locations and lubrication schedule.

### LUBRICATION CHART

FITTING LOCATIONS	INITIAL PUMPS	No. of PLACES	SERVICE INTERVAL
1. Caster Wheel Bearings	*0	2	*Yearly
2. Caster Pivots	*0	2	*Yearly
3. Idler Pivots (Mower Deck)	1	2	Yearly

- \* See 3.1.5 Section c) for special lubrication instructions on the front caster pivots and Section 3.1.6 for special lubrication instructions on the front caster wheel hubs.



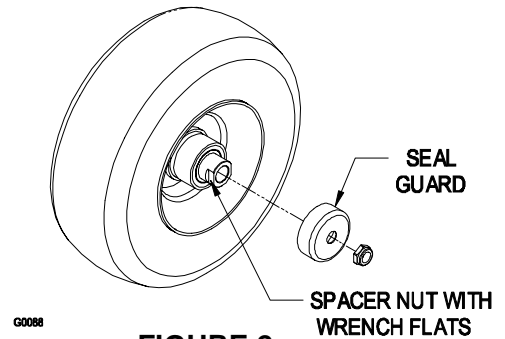
- c) Lubricate front caster pivots once a year. Remove hex plug and cap. Thread grease zerk in hole and pump with grease until it oozes out around top bearing. Remove grease zerk and thread plug back in. Place cap back on.

### 3.1.6 Lubricate caster wheel hubs:

*Service Interval: Once Yearly*

- a) Stop engine, wait for all moving parts to stop, and remove key.
- b) Remove caster wheel from caster forks.
- c) Remove seal guards from the wheel hub.
- d) Remove one of the spacer nuts from the axle assembly in the caster wheel. Note that thread locking adhesive has been applied to lock the spacer nuts to the axle. Remove the axle (with the other spacer nut still assembled to it) from the wheel assembly.
- e) Pry out seals, and inspect bearings for wear or damage and replace if necessary.
- f) Pack the bearings with a NGLI grade #1 multi-purpose grease.
- g) Insert (1) bearing, (1) new seal into the wheel.
- h) **NOTE:** Seals (Exmark PN 103-0063) must be replaced.
- i) If the axle assembly has had both spacer nuts removed (or broken loose), apply a thread locking adhesive to (1) spacer nut and thread onto the axle with the wrench flats facing outward. Do not thread spacer nut all of the way onto the end of the axle. Leave approximately 1/8" (3 mm) from the outer surface of the spacer nut to the end of the axle inside the nut.
- j) Insert the assembled nut and axle into the wheel on the side of the wheel with the new seal and bearing.
- k) With the open end of the wheel facing up, fill the area inside the wheel around the axle full of NGLI grade #1 multi-purpose grease.
- l) Insert the second bearing and new seal into the wheel.
- m) Apply a thread locking adhesive to the 2<sup>nd</sup> spacer nut and thread onto the axle with the wrench flats facing outward.
- n) Torque the nut to 75-80 in-lbs. (8-9 N-m), loosen, then re-torque to 20-25 in-lbs. (2-3 N-m). Make sure axle does not extend beyond either nut.
- o) Re-install the seal guards over the wheel hub and insert wheel into caster fork. Re-install caster bolt and tighten nut fully.

**IMPORTANT:** To prevent seal and bearing damage, check the bearing adjustment often. Spin the caster tire. The tire should not spin freely (more than 1 or 2 revolutions) or have any side play. If the wheel spins freely, adjust torque on spacer nut until there is a slight amount of drag. Re-apply threadlocking adhesive.



### 3.1.7 Thread locking adhesives such as "Loctite 242" or "Fel-Pro, Pro-Lock Nut-Type" are used on the following fasteners:

- a) Caster wheel spacer nuts. (Reference Section 3.1.6)
- b) Cutter housing spindle nut.


### 3.1.8 Mobil HTS grease (or food-grade antisieze) is used in the following locations:

- a) Between the cutter housing spindle and bearings.
- b) Between the cutter housing spindle and sheave.
- c) Under top cutter housing bearing guard.

## 3.2 ADJUSTMENTS

**IMPORTANT:** Disengage PTO, shut off engine, wait for all moving parts to stop, and remove key before servicing, cleaning, or making adjustments to the unit.

### 3.2.1 Cutting height and anti-scalp roller adjustment.

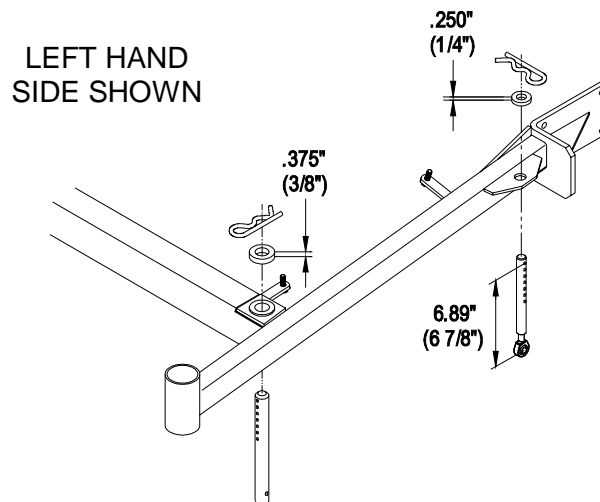
<div> <b>CAUTION</b></div>
<b>POTENTIAL HAZARD</b> <ul style="list-style-type: none"><li>◆ When mower deck is not installed or the two front support rod hairpins are removed, the unbalanced weight of the tractor or tractor with mounted mower deck support frame may cause the front of the unit to rise suddenly.</li></ul>
<b>WHAT CAN HAPPEN</b> <ul style="list-style-type: none"><li>◆ If the unit rises suddenly, injury may occur.</li></ul>
<b>HOW TO AVOID THE HAZARD</b> <ul style="list-style-type: none"><li>◆ Securely hold down the front end of the unit when the mower deck is not installed or front support rod hairpins are removed.</li></ul>

- Stop engine and wait for all moving parts to stop.
- Install hairpin clips in the holes for the desired cutting height. See Figure 3.

**IMPORTANT:** To maintain correct cutting height and rake, check the following for proper adjustment.

- The front and rear hairpins are in the same holes with the proper spacers under the hair pins. See Figure 3.
- The length of the rear deck support link assemblies should average 6.89" (approximately 6 7/8" (17.5 cm)) from the center of the balljoint to the center of the farthest hole. See Figure 3.

NOTE: All (4) pins must equally support the weight of the deck. Adjustment in the length of the rear deck support assemblies may be necessary. If one side is longer than 6.89" (17.5 cm), than the opposite side must be shorter by the same amount.



**FIGURE 3**  
**CUTTING HEIGHT ADJUSTMENT**

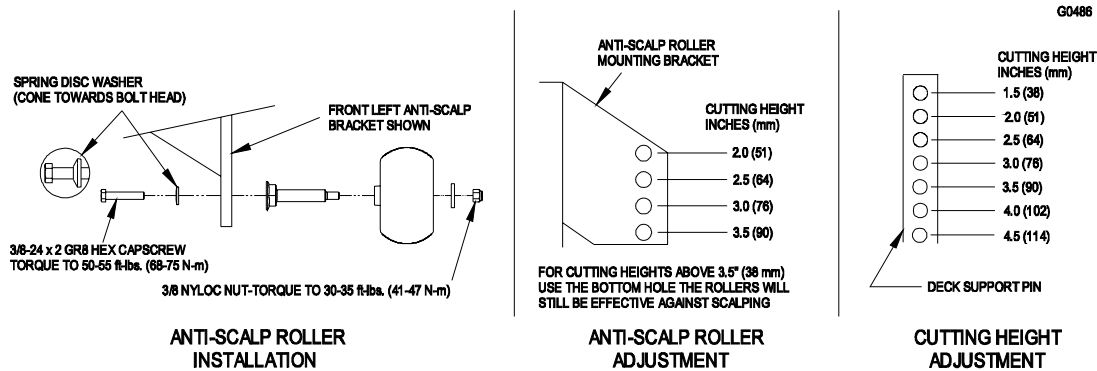
- c) Adjust anti-scalp rollers for Normal Operating Conditions. Place rollers in one of the positions shown in Figure 4. Rollers will maintain 3/4 in. (19 mm) clearance to the ground to minimize gouging and roller wear or damage.

**For Maximum Deck Flotation**, place rollers one hole position lower. Rollers should maintain 1/4 in. (6.4 mm) clearance to ground. **Do Not** adjust rollers to support the deck. Be sure roller bolts and nuts are installed with the spring disc washer between head of the bolt and mounting bracket.

Torque hardware as specified below, or loss of roller may result.

**3/8 Nyloc Nut** - Torque to 30-35 ft-lbs. (41-47 N-m)

**3/8-24 x 2 Gr 8 Hex Capscrew** - Torque to 50-55 ft-lbs (68-75 N-m)



**FIGURE 4**  
**ANTI-SCALP ROLLER INSTALLATION**  
**AND CUTTING HEIGHT ADJUSTMENT**

- d) When operating in extremely rough conditions it may be necessary to position the anti-scalp rollers one or two holes higher than described in © to prevent damage to the rollers and/or bolt failure. See Figure 4.

**NOTE:** When anti-scalp rollers are placed in these positions, reduced deck flotation will result.

## 4. PARTS LIST

### 4.1 52" DECK GROUP FMD524

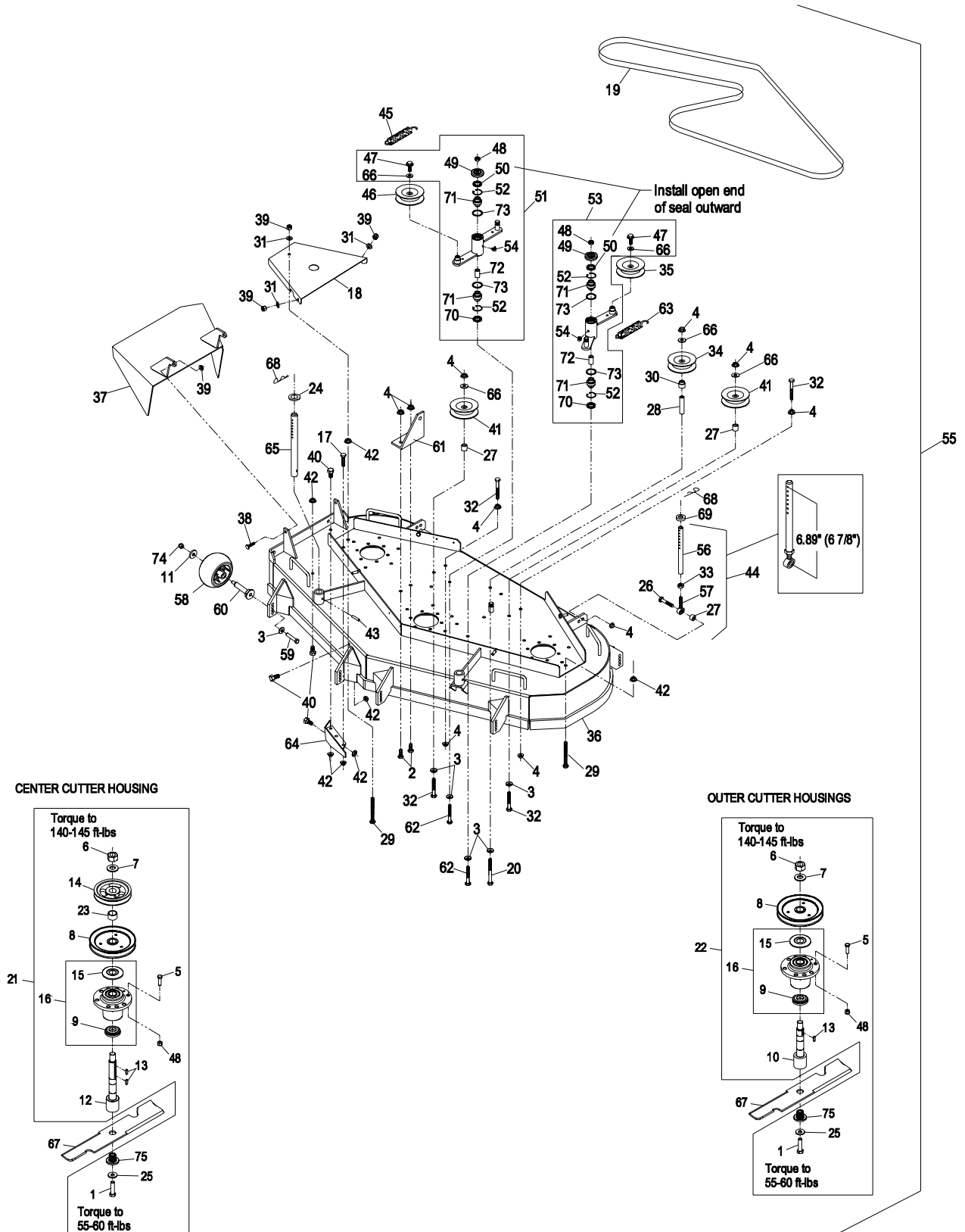
Item	Part No.	Description	Qty.
1	3213-5	Screw, HH 1/2-20 x 2 .....	3
2	323-6	Screw, HH 3/8-16 x 1 .....	2
3	98-5975	Washer, Spring Disk 3/8 .....	11
4	3290-357	Nut, Whizlock 3/8-16 .....	11
5	323-7	Screw, HH 3/8-16 x 1 1/4 .....	18
6★	3217-46	Nut, Hex 3/4-16 Heavy .....	3
7	103-2802	Washer, Spring Disk 3/4 .....	3
8+	103-2794	Sheave, Blade Drive .....	3
9	103-2535	Spacer, Guard Bottom .....	3
10+□	103-9086	Kit, Outer Blade Spindle (Short) .....	2
11	1-373034	Washer .....	6
12+□	103-9087	Kit, Center Blade Spindle (Long) .....	1
13	103-2982	Key, Machine 1/4 x 3/16 x 3/4 .....	4
14+	103-2793	Sheave, Mower Drive .....	1
15+	103-1330	Guard, Bearing Top .....	3
16+	103-8280	Housing W/Bearings .....	3
17	322-3	Screw, HH 5/16-18 x 3/4 .....	1
18	103-2969-01	Cover, Deck .....	2
19	103-2329	Belt, Blade Drive .....	1
20	323-23	Screw, HH 3/8-16 x 4-1/2 .....	1
21	103-9084	Housing, Cutter Complete (Center) .....	1
22	103-9076	Housing, Cutter Complete (Outer) .....	2
23	103-3209	Spacer, Tube .....	1
24	1-413425	Spacer .....	2
25	1-513435	Washer, Spring Disk 1/2 .....	3
26	323-9	Screw, HH 3/8-16 x 1 3/4 .....	2
27	1-603050	Spacer .....	4
28	1-633988	Spacer .....	1
29	1-800017	Bolt, HH 5/16-18 x 3 1/4 Tap .....	2
30	1-513791	Bushing .....	1
31	3256-3	Washer, 5/16 Std .....	6
32	323-12	Screw, HH 3/8-16 x 2 1/2 .....	4
33	3219-3	Nut, Hex 3/8-24 .....	2
34	1-603805	Idler .....	1
35	1-613098	Idler .....	1
36	103-2335	Deck, 103-2321-01 W/ Decals .....	1
37	103-5888-01	Chute, Discharge .....	1
38	322-5	Screw, HH 5/16-18 x 1 .....	2
39	3296-29	Nut, Nyloc 5/16-18 .....	8
40	322-2	Screw, HH 5/16-18 x 5/8 .....	5

Item	Part No.	Description	Qty.
41	1-303516	Pulley, V-Idler .....	2
42	32128-20	Nut, Whizlock 5/16-18 .....	8
43	1-806332	Rollpin 1/4 x 1 1/2 .....	2
44*	1-414521	Asm, Link .....	2
45	1-603413	Spring, Extension .....	1
46	1-603497	Pulley, Idler .....	1
47	3234-11	Screw, HH FLG 3/8-16 x 1 .....	2
48	3296-39	Nut, Nyloc 3/8-16 .....	20
49	103-2916	Guard, Top .....	2
50	103-3506	Seal, Single Lip .....	2
51■	103-8072	Kit, Idler Arm W/Bearings .....	1
52	32120-10	Ring, Retaining .....	2
53■	103-8071	Kit, Idler Arm W/Bearings .....	1
54	302-40	Zerk, 90° 1/4-28 .....	2
55	103-2327	Asm, Complete Deck .....	1
56	1-413525	Link, Rear Deck Support .....	2
57	1-613204	Balljoint .....	2
58◆	1-603299	Roller, Anti Scalp .....	6
59	3211-46	Screw, HH 3/8-24 x 2 Gr8 .....	6
60	103-5364	Axle, Anti-Scalp Roller .....	6
61	1-603620-01	Bracket, Spring Anchor .....	1
62	98-5961	Screw, HH 3/8-16 x 4 Gr8 .....	2
63	1-603414	Spring, Extension .....	1
64	1-602913-01	Baffle .....	1
65	1-603001	Rod, Deck Support .....	2
66	3256-24	Washer, 3/8 SAE .....	5
67	103-6402	Blade, Notched .....	3
	103-6382	Blade, Solid .....	3
	103-6387	Blade, Low Lift .....	3
▲	103-6392	Blade, Mulching .....	3
	103-6397	Blade, Extreme .....	3
68	1-806009	Hairpin, Cotter #206 .....	4
69	1-323539	Spacer, Blade Drive .....	2
70	103-3505	Seal, Double, Lip .....	2
71	103-3504	Bearing, Spherical .....	4
72	1-413088	Spacer .....	2
73	106-7159	O-Ring .....	4
74	3296-39	Nut, Nyloc 3/8-16 .....	6
75	103-3037	Bushing, Splined .....	3

Exmark red touch up paint (spray paint - P/N 1-850337 - .6 oz liquid bottle - P/N 103-9140).

- ✚ Apply Mobil HTS grease (P/N 103-5217 1.5 oz packet) (or a food-grade anti-sieze) between the spindles & bearings and spindles & sheaves and under top bearing guard. DO NOT use a copper or nickel based anti-sieze.
- \* Link assembly nominal length is 6.89" (or approx. 6 7/8") between center of ball joint & center of furthest hole. See diagram on next page. Initially adjust both links to this dimension, then adjust to where both links are equally supporting rear of mower deck by lengthening one link and shortening the other by an equal amount.
- ◆ Kit 103-7263 includes antiscalp roller, axle, & mounting hardware.
- ▲ Requires installation of Micro-Mulch accessory for proper mulching. Mulch kit P/N MK524Q.
- Idler arm assembly also includes items #3 & #62.
- ★ Use Pro-Lock, Nut Type (P/N 1-840022, .5ml tube) on nut, Item #6.
- Kit includes items #1, #6, #7, #13, #25 & #75.

# 52" DECK GROUP FMD 524



G0463



## 4.2 60" DECK GROUP FMD604

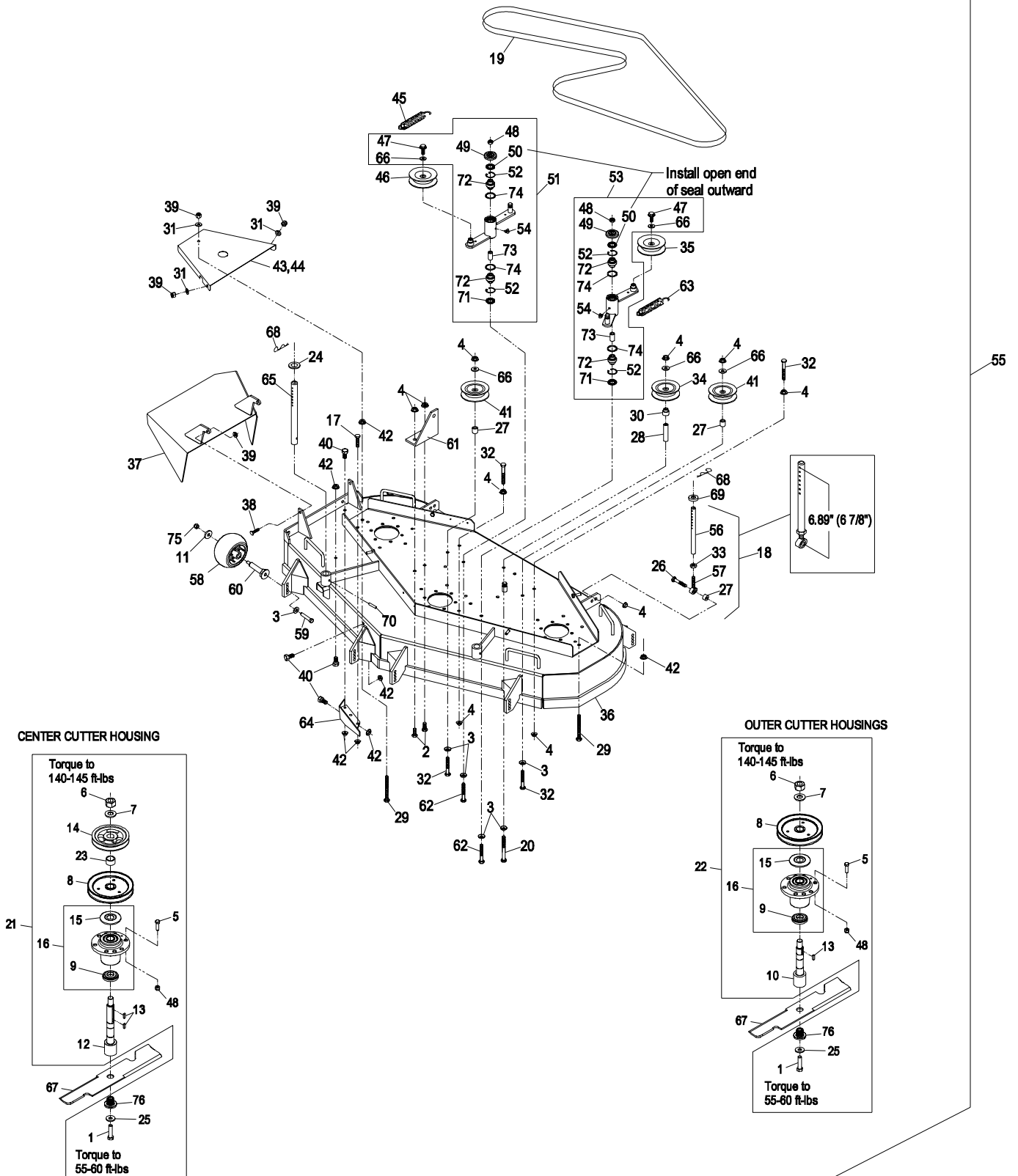
Item	Part No.	Description	Qty.
1	3213-5	Screw, HH 1/2-20 x 2 .....	3
2	323-6	Screw, HH 3/8-16 x 1 .....	2
3	98-5975	Washer, Spring Disk 3/8 .....	11
4	3290-357	Nut, Whizlock 3/8-16 .....	17
5	323-8	Screw, HH 3/8-16 x 1 1/2 .....	18
6★	3217-46	Nut, Hex 3/4-16 Heavy .....	3
7	103-2802	Washer, Spring Disk 3/4 .....	3
8+	103-2794	Sheave, Blade Drive .....	3
9	103-2535	Spacer, Guard Bottom .....	3
10+□	103-9086	Kit, Outer Blade Spindle (Short) .....	2
11	1-373034	Washer .....	6
12+□	103-9087	Kit, Center Blade Spindle (Long) .....	1
13	103-2982	Key, Machine 1/4 x 3/16 x 3/4 .....	4
14+	103-2791	Sheave, Mower Drive .....	1
15+	103-1330	Guard, Bearing Top .....	3
16+	103-8280	Housing W/Bearings .....	3
17	322-3	Screw, HH 5/16-18 x 3/4 .....	1
18*	1-414521	Asm, Link .....	2
19	1-633173	Belt, Blade Drive .....	1
20	323-23	Screw, HH 3/8-16 x 4-1/2 .....	1
21	103-9083	Housing, Cutter Complete (Center) .....	1
22	103-9076	Housing, Cutter Complete (Outer) .....	2
23	103-3209	Spacer, Tube .....	1
24	1-413425	Spacer .....	2
25	1-513435	Washer, Spring Disk 1/2 .....	3
26	323-9	Screw, HH 3/8-16 x 1 3/4 .....	2
27	1-603050	Spacer .....	4
28	1-633988	Spacer .....	1
29	1-800017	Bolt, HH 5/16-18 x 3 1/4 Tap .....	2
30	1-513791	Bushing .....	1
31	3256-3	Washer, 5/16 Std .....	6
32	323-12	Screw, HH 3/8-16 x 2 1/2 .....	4
33	3219-3	Nut, Hex 3/8-24 .....	2
34	1-603805	Idler .....	1
35	1-613098	Idler .....	1
36	103-8388	Deck, 103-7316-01 W/ Decals .....	1
37	103-2349-01	Chute, Discharge .....	1
38	322-5	Screw, HH 5/16-18 x 1 .....	2
39	3296-29	Nut, Nyloc 5/16-18 .....	8
40	322-2	Screw, HH 5/16-18 x 5/8 .....	5

Item	Part No.	Description	Qty.
41	1-303516	Pulley, V-Idler .....	2
42	32128-20	Nut, Whizlock 5/16-18 .....	8
43	103-2967-01	Shield, Belt RH .....	1
44	103-2968-01	Shield, Belt LH .....	1
45	1-603413	Spring, Extension .....	1
46	1-603497	Pulley, Idler .....	1
47	3234-11	Screw, HH FLG 3/8-16 x 1 .....	2
48	3296-39	Nut, Nyloc 3/8-16 .....	20
49	103-2916	Guard, Top .....	2
50	103-3506	Seal, Single Lip .....	2
51■	103-8072	Kit, Idler Arm W/Bearings .....	1
52	32120-10	Ring, Retaining .....	2
53■	103-8071	Kit, Idler Arm W/Bearings .....	1
54	302-40	Zerk, 90° 1/4-28 .....	2
55	103-2279	Complete Deck Assy .....	1
56	1-413525	Link, Rear Deck Support .....	2
57	1-613204	Balljoint .....	2
58◆	1-603299	Roller, Anti Scalp .....	6
59	3211-46	Screw, HH 3/8-24 x 2 Gr8 .....	6
60	103-5364	Axle, Anti-Scalp Roller .....	6
61	1-603620-01	Bracket, Spring Anchor .....	1
62	98-5961	Screw, HH 3/8-16 x 4 Gr8 .....	2
63	1-603414	Spring, Extension .....	1
64	1-602913-01	Baffle .....	1
65	1-603001	Rod, Deck Support .....	2
66	3256-24	Washer, 3/8 SAE .....	5
67	103-6403	Blade, Notched .....	3
	103-6383	Blade, Solid .....	3
	103-6388	Blade, Low Lift .....	3
▲	103-6393	Blade, Mulching .....	3
	103-6398	Blade, Extreme .....	3
68	1-806009	Hairpin, Cotter #206 .....	4
69	1-323539	Spacer, Blade Drive .....	2
70	1-806332	Rollpin 1/4 x 1 1/2 .....	2
71	103-3505	Seal, Double, Lip .....	2
72	103-3504	Bearing, Spherical .....	4
73	1-413088	Spacer .....	2
74	106-7159	O-Ring .....	4
75	3296-39	Nut, Nyloc 3/8-16 .....	6
76	103-3037	Bushing, Splined .....	3

Exmark red touch up paint (spray paint - P/N 1-850337 - .6 oz liquid bottle - P/N 103-9140).

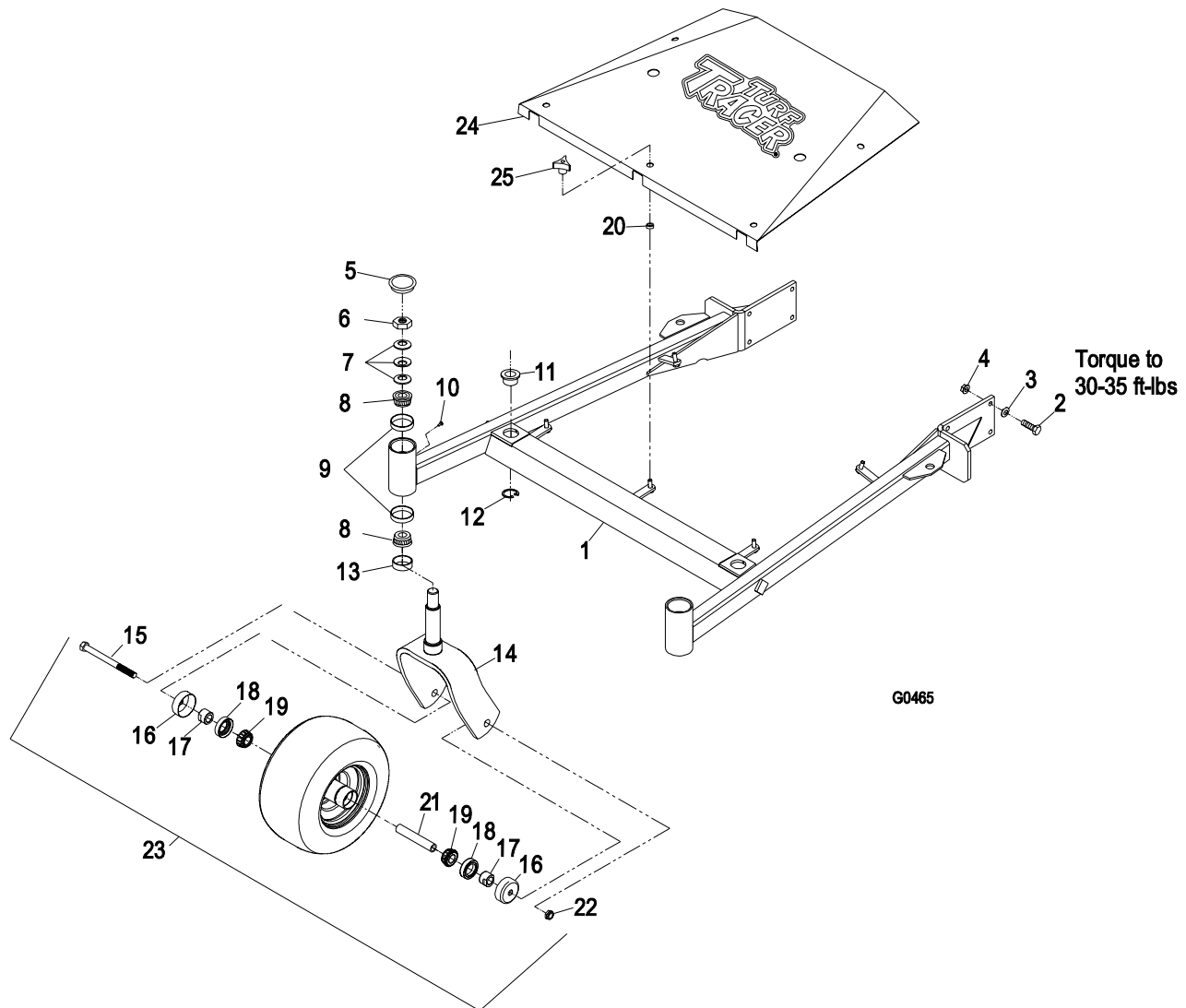
- ✚ Apply Mobil HTS grease (P/N 103-5217 1.5 oz packet) (or a food-grade anti-sieze) between the spindles & bearings and spindles & sheaves and under top bearing guard. DO NOT use a copper or nickel based anti-sieze.
- \* Link assembly nominal length is 6.89" (or approx. 6 7/8") between center of ball joint & center of furthest hole. See diagram on next page. Initially adjust both links to this dimension, then adjust to where both links are equally supporting rear of mower deck by lengthening one link and shortening th other by an equal amount.
- ◆ Kit 103-7263 includes antiscalp roller, axle, & mounting hardware.
- ▲ Requires installation of Micro-Mulch accessory for proper mulching. Mulch kit P/N MK604Q.
- Idler arm assembly also includes items #3 & #62.
- ★ Use Pro-Lock, Nut Type (P/N 1-840022, .5ml tube) on nut, Item #6.
- Kit includes items #1, #6, #7, #13, #25 & #76.

# 60" DECK GROUP FMD604



G0464

### 4.3 52" and 60" DECK SUPPORT GROUP FMD524 and FMD604



Item	Part No.	Description	Qty.
1▲	103-1895	Support, Deck (103-4959-01) (52")	1
▲	103-1896	Support, Deck (103-4960-01) (60")	1
2	323-7	Screw, HH 3/8-16 x 1 1/4	8
3	98-5975	Washer, Spring Disk 3/8	8
4	3290-357	Nut, Whizlock 3/8-16	8
5	103-4882	Cap, Grease	2
6	3296-51	Nut, Nyloc 3/4-10	2
7	1-633508	Washer, Spring Disk	6
8	1-543509	Cone, Bearing Tapered Roller	4
9	1-543508	Cup, Bearing Tapered Roller	4
10	1-811010	Plug	2
11	1-513336	Bushing, Deck Support	2
12	32120-33	Ring, Retaining	2
13	1-543511	Seal, Grease	2
14	103-1891-01	Fork, Caster	2

Item	Part No.	Description	Qty.
15	325-20	Screw, HH 1/2-13 x 6	2
16	103-2768	Guard, Seal	4
17+	103-3051	Spacer, Nut	4
18	103-0063	Seal, Double Lip	4
19	1-633585	Bearing, Cone Tapered Roller	4
20	1-323417	Washer, Belt Shield	5
21	103-3157	Axle, Caster	2
22	3296-45	Nut, Nyloc 1/2-13 Thin	2
23	103-9591	Asm, Wheel & Tire With Axle	2
24	103-2332	Shield, Belt (103-2319-01)	
		W/Decal (52")	1
	103-2275	Shield, Belt (103-2273-01)	
		W/Decal (60")	1
25	1-323385	Knob, 3 Prong	5

Exmark red touch up paint (spray paint - P/N 1-850337 - .6 oz liquid bottle - P/N 103-9140).

✚ Use Pro-Lock, Nut Type (P/N 1-840022, .5ml tube) on spacer nut, Item #17.

▲ Includes frame weldment plus items #5, #9, #10, #11, #12 and #13.

#### 4.

### 2-Year Limited Warranty Exmark Turf Equipment

(For units purchased on or after October 1, 2004)

#### Conditions and Products Covered

Exmark Mfg. Co. Inc. and its affiliate, Exmark Warranty Company, pursuant to an agreement between them, jointly warrant on the terms and conditions herein, that we will repair, replace or adjust any part manufactured by Exmark and found by us (in the exercise of our reasonable discretion) to be defective in factory materials or workmanship for a period of two years.

This warranty applies to Exmark turf equipment purchased on or after October 1, 2004 sold in the US or Canada. This warranty may only be assigned or transferred to a second (or third) owner by an authorized Exmark dealer. The warranty period commences upon the date of the original retail purchase.

#### Products

- |  |  |
|--|--|
| • All Products (except as noted below) | 2 years                                    |
| • All Attachments and Accessories      | 1 year                                     |
| • Metro 21 and Metro 26 Series         | 1 year                                     |
| • Belts and Tires                      | 90 days                                    |
| • Battery                              | 1 Year Prorated                            |
| • Engine*                              | Warranty is covered by engine manufacturer |

\*Please refer to the engine manufacturer's warranty statement that is included in the literature packet. We are not authorized to handle warranty adjustments on engines.

This warranty only includes the cost of parts and labor.

#### Items and Conditions Not Covered

This warranty does not cover the following:

- Pickup and delivery charges to and from any authorized Exmark Service Dealer.
- Any damage or deterioration due to normal use, wear and tear, or exposure.
- Cost of regular maintenance service or parts, such as filters, fuel, lubricants, tune-up parts, and adjustments.
- Any product or part which has been altered or misused or required replacement or repair due to normal wear, accidents, or lack of proper maintenance.
- Any repairs necessary due to use of parts, accessories or supplies, including gasoline, oil or lubricants, incompatible with the turf equipment or other than as recommended in the operator's manual or other operational instructions provided by Exmark.

All warranty work must be performed by an authorized Exmark Service Dealer using Exmark approved replacement parts.

#### Instructions for Obtaining Warranty Service

1. Contact any Exmark Service Dealer to arrange service at their dealership. To locate a dealer convenient to you, access our website at [www.exmark.com](http://www.exmark.com). U.S. Customers may also call 402-223-6375.
2. Bring the product and your proof of purchase (sales receipt) to the Exmark Service Dealer.

If for any reason you are dissatisfied with the Service Dealer's analysis or with the assistance provided, contact us at:

Exmark Customer Service Department  
The Exmark Warranty Company  
2101 Ashland Avenue  
Beatrice, NE 68310  
402-223-6375 or  
[service@exmark.com](mailto:service@exmark.com)

#### Owner's Responsibilities

The Exmark turf equipment, including any defective part, must be returned to an authorized Exmark service dealer within the warranty period. This warranty extends only to turf equipment operated under normal conditions. You must properly service and maintain your Exmark product as described in the operator's manual. Such routine maintenance, whether performed by a dealer or by you, is at your expense.

As a condition to this warranty, customer shall have read the operator's manual and shall have completed and submitted to Exmark Warranty Company, within the prescribed time, the Exmark warranty registration.

#### General Conditions

The sole liability of Exmark and Exmark Warranty Company with respect to this warranty shall be repair and replacement as set forth herein. **Neither Exmark nor Exmark Warranty Company shall have any liability for any other cost, loss or damage, including but not limited to, any incidental or consequential loss or damage.**

In particular, we shall have no liability or responsibility for:

- Expenses related to gasoline, oil or lubricants.
- Travel time, overtime, after hours time or other extraordinary repair charges or charge relating to repairs or replacements outside of normal business hours at the place of business of the authorized Exmark service dealer.
- Rental of like or similar replacement equipment during the period of any warranty, repair or replacement work.
- Any telephone or telegram charges or travel charges.
- Loss or damage to person or property other than that covered by the terms of this warranty.
- Any claims for lost revenue, lost profit or additional cost as a result of a claim of breach of warranty.
- Attorney's fees.

No Claim of breach of warranty shall be cause for cancellation or rescission of the contract of sale of any Exmark mower.

There are no understandings, agreements, representations, or warranties, express or implied, including but not limited to any regarding the merchantability (that product is fit for ordinary use) or fitness for use (that product is fit for a particular purpose), not specified herein, respecting the equipment which is the subject of this warranty.

**Some states do not allow exclusions of incidental or consequential damages, or limitations on how long an implied warranty lasts, so the above exclusions and limitations may not apply to you.**

This warranty gives you specific legal rights, and you may also have other rights which vary from state to state.

## NOTES

## NOTES

## SERVICE RECORD

[illegible]

## **SEE EXMARK'S COMPLETE LINE OF ACCESSORIES**

### **RIDING ACCESSORIES**

CUSTOM RIDE SEAT SUSPENSION SYSTEM  
DECK LIFT ASSIST KIT  
HITCH KIT  
LIGHT KIT  
MICRO-MULCH SYSTEM  
ROLL OVER PROTECTION SYSTEM (ROPS)  
SNOW BLADE  
SUN SHADE  
TRASH CONTAINER  
TURF STRIPER  
ULTRA VAC COLLECTION SYSTEM  
ULTRA VAC QUICK DISPOSAL SYSTEM

### **WALK BEHIND ACCESSORIES**

GRASS CATCHER  
MICRO-MULCH SYSTEM  
STEERABLE SULKY  
SULKY HITCH KIT  
TURF STRIPER  
STANDON

Check us out on the Web:  
**[www.exmark.com](http://www.exmark.com)**

© 2005 EXMARK MFG. CO. INC.  
INDUSTRIAL PARK BOX 808  
BEATRICE, NE 68310

PART NO. 109-0713 Rev. A  
(402) 223-6300  
FAX (402) 223-5489

ALL RIGHTS RESERVED

PRINTED IN U.S.A.

