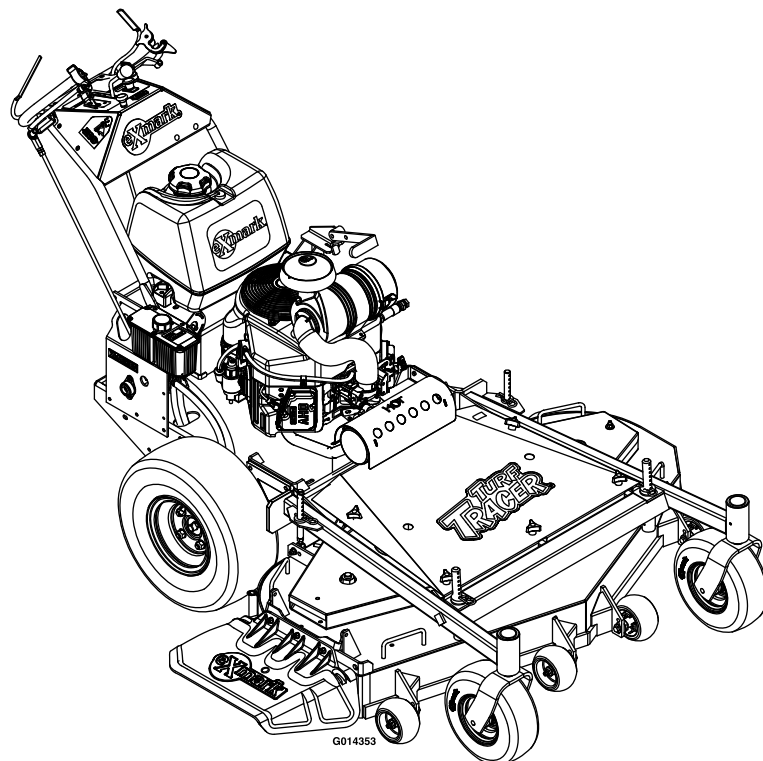




# **FMD604**

Model No. FMD604—Serial No. 920000 and Up



# **Parts Manual**

# Ordering Replacement Parts

To order replacement parts, please supply the part number, the quantity, and the description of each part desired.

## Understanding Reference Numbers

Each identified part in an illustration has a reference number. The reference number for a part also appears in the parts list, along with other information about the part.

This catalog uses two special reference number formats, one to indicate parts in a service assembly and another to indicate the quantity of a given part in an illustration.

## Service Assembly Reference Numbers

Parts in service assemblies have reference numbers in the form a:b. The a represents the reference number of the entire service assembly and the b represents a sequential number unique to each part within the service assembly.

For example, a wheel assembly might be identified by reference number 6, the tire by 6:1, the valve by 6:2, and the wheel by 6:3. When you order the assembly identified by reference number 6, you receive all parts identified by reference numbers 6:1, 6:2, and 6:3. However, you may also order any part individually. Reference numbers of this type appear in illustration and in parts lists.

## Reference Numbers Indicating Quantity

In an illustration, if a reference number indicates more than one part, the reference number has the form nX y. The n represents the quantity of the part, the X is the multiplication symbol, and the y represents the reference number.

For example, in an illustration, the reference number 2X 37 means that two of the parts identified by reference number 37 are indicated.

# List of Abbreviations

**AR:** as required

**ASM:** assembly

**BBC:** blade brake control

**BHTF:** button head thread forming

**CARR:** carriage

**CCW:** counter clockwise

**CW:** clockwise

**DEG:** degrees

**DPA:** Dual Point Adjustment

**ECM:** electronic control module

**EXT:** external

**FH:** flat head

**GA:** gauge

**HD:** heavy-duty

**HF:** hex flange

**HH:** hex head

**HHF:** hex head flange

**HHFTF:** hex head flange thread forming

**HJ:** hex jam

**HLH:** hex lag head

**HOC:** height-of-cut

**HSBH:** hex socket button head

**HSFH:** hex socket flat head

**HSH:** hex socket head

**HWH:** hex washer head

**HWHTF:** hex washer head thread forming

**HYD:** hydraulic

**LH:** left hand

**LP:** Liquid Propane

**NI:** nylon insert

**NPTF:** national pipe thread fine

**PFH:** phillips flat head

**PPH:** phillips pan head

**PPHTF:** phillips pan head thread forming

**PRH:** phillips round head

**PTH:** phillips truss head

**PTO:** power-take-off

**RH:** right hand

**ROPS:** roll-over protection system

**RRB:** rear roller brush

**SFH:** slotted fillister head

**SHH:** slotted hex head

**SHWH:** slotted hex washer head

**SPH:** slotted pan head

**SQH:** square head

**SRH:** slotted round head

**STD:** standard

**TAP:** self tapping

**TTH:** torx truss head

# Touch Up Paint

Exmark black touch up spray paint – gloss black.

Exmark red touch up paint (spray paint – P/N 1-850337 - .6 oz liquid bottle – P/N 103-9140).

**EXMARK PARTS PLUS**

***PARTS***

**OVERNIGHT**

**OR *FREE*\***

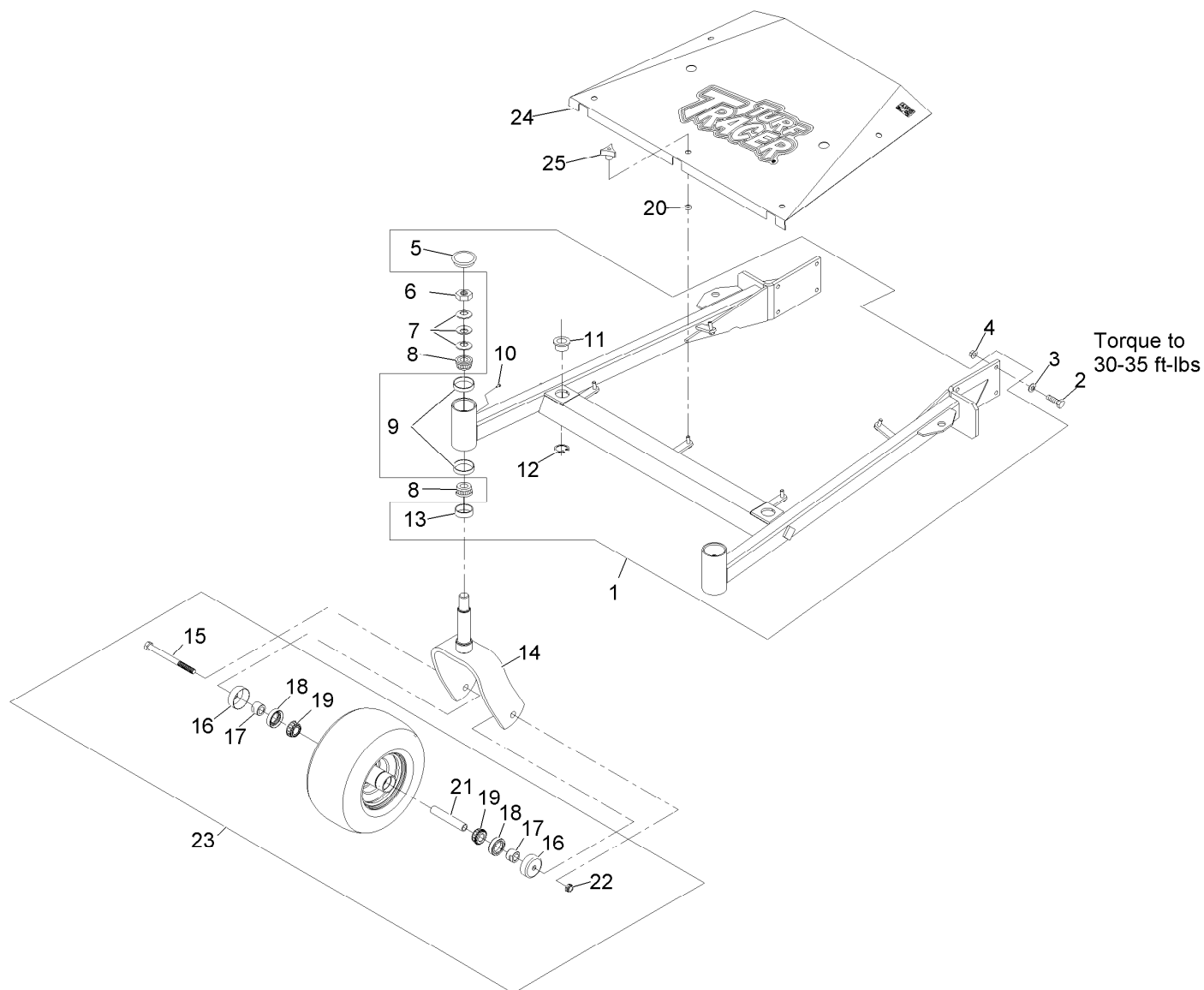
If your Exmark dealer does not have the Exmark part in stock, Exmark will get the parts to the dealer the next business day or the part will be FREE Guaranteed!! (Some restrictions apply. See your participating Exmark Dealer for details.)

# Contents

Deck Support Assembly ..... 5

Deck Assembly..... 6

Decals ..... 8

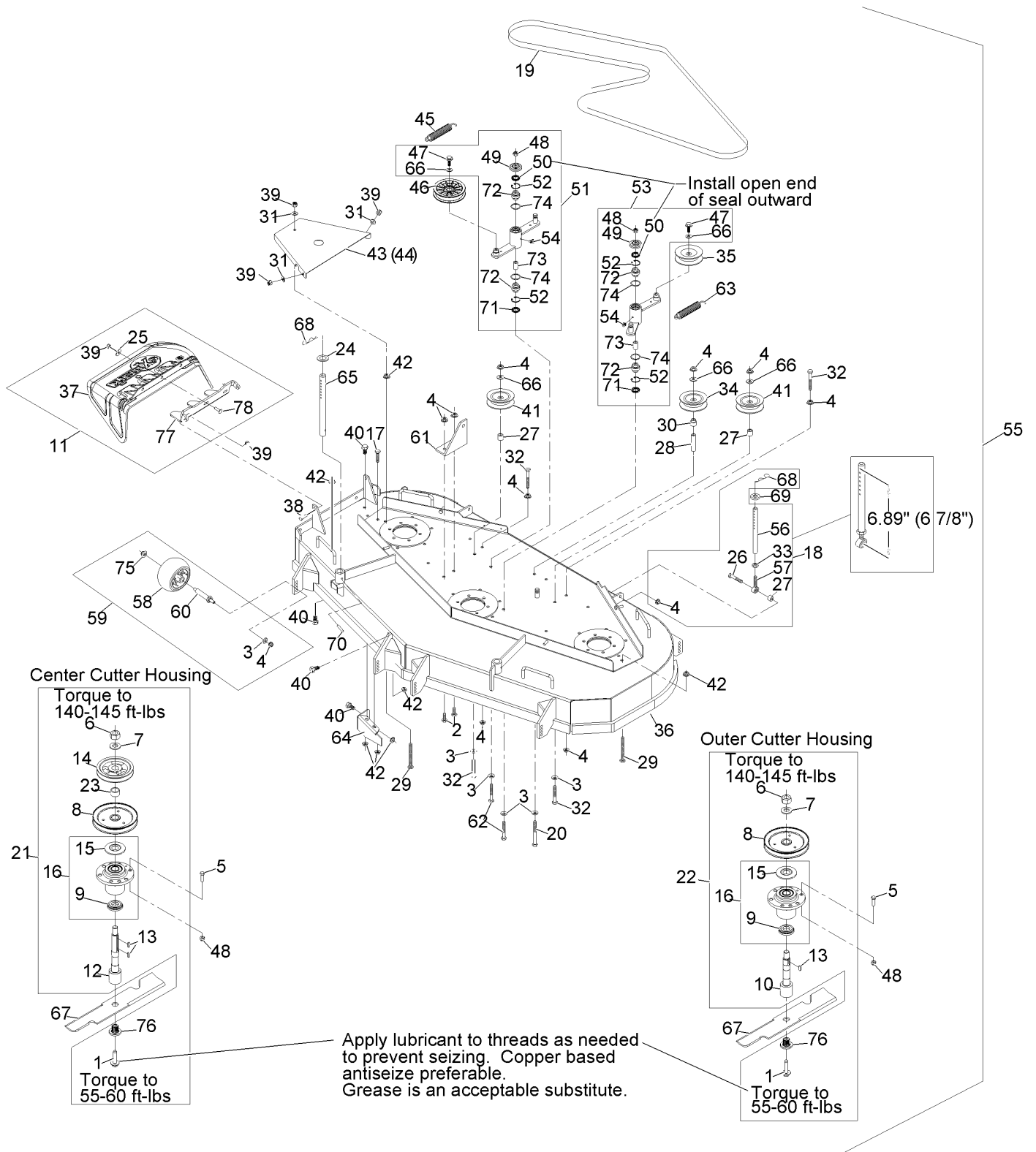


## Deck Support Assembly

Ref.	Part Number	Qty.	Description	Ref.	Part Number	Qty.	Description
1	103-1896	1	Support, Deck (103-4960-01) (60")	14	103-1891-01	2	Wld, Caster Fork
2	323-7	8	Screw-HH 3/8-16 X 1 1/4	15	325-20	2	Screw-HH 1/2-13 X 6
3	98-5975	8	Washer-Spring Disc 3/8	16	103-2768	4	Guard-Seal
4	3290-357	8	Nut-Whizlock 3/8-16	17	103-3051	4	Spacer-Nut ●
5	103-4882	2	Cap-Grease	18	103-0063	4	Seal-Double Lip
6	3296-51	2	Nut-Nyloc 3/4-10	19	1-633585	4	Bearing-Cone Tapered Roller
7	1-633508	6	Washer-Spring Disc	20	1-323417	5	Washer-Belt Shield
8	1-543509	4	Cone-Bearing Tapered Roller	21	103-3157	2	Axle-Caster
9	1-543508	4	Cup-Bearing Tapered Roller	22	3296-45	2	Nut-Nyloc 1/2-13 Thin
10	1-811010	2	Plug	23	109-3524	2	Asm, Wheel & Tire With Axle
11	1-513336	2	Bushing-Deck	24	116-2709	1	Shield, Belt (103-2273-01) W/Decal (60")
12	32120-33	2	Ring-Retaining	25	1-323385	5	Knob-3 Prong
13	1-543511	2	Seal-Grease				

● Use Pro-Lock, Nut Type (P/N 1-840022, .5ml tube) on threads.

# Deck Assembly



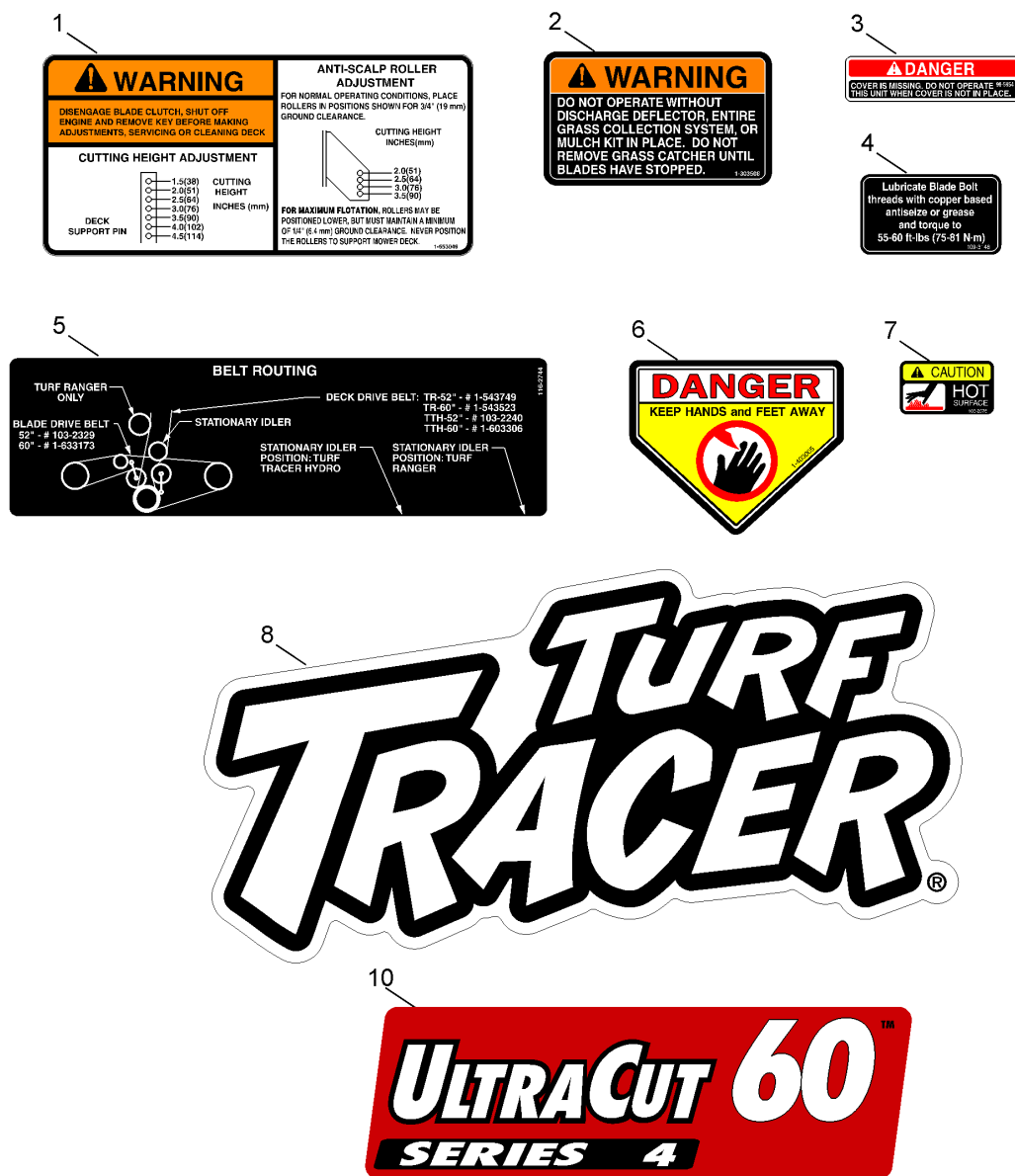
## Deck Assembly (continued)

<i>Ref.</i>	<i>Part Number</i>	<i>Qty.</i>	<i>Description</i>	<i>Ref.</i>	<i>Part Number</i>	<i>Qty.</i>	<i>Description</i>
1	109-5958	3	Screw-Hex Flange 1/2-20	41	1-303516	2	Pulley, V-Idler
2	323-6	2	Screw-HH 3/8-16 X 1	42	32128-20	8	Nut-Whizlock 5/16-18
3	98-5975	10	Washer-Spring Disc 3/8	43	103-2967-01	1	Shield, Belt RH
4	3290-357	16	Nut-Whizlock 3/8-16	44	103-2968-01	1	Shield, Belt LH
5	323-8	18	Screw-HH 3/8-16 X 1 1/2	45	1-603413	1	Spring-Extension
6	3217-46	3	Nut-Hex 3/4-16 Heavy	46	109-4077	1	Pulley, Idler
7	103-2802	3	Washer-Spring Disc 3/4	47	3234-11	2	Screw-HH Flg 3/8-16 X 1
8	103-2794	3	Sheave, Blade Drive ▲	48	3296-39	20	Nut-Nyloc 3/8-16
9	103-2535	3	Spacer-Guard Bottom	49	103-2916	2	Guard-Top
10	103-9086	2	Kit, Splined Spindle 103-3036 ▲	50	103-3506	2	Seal-Single Lip
11	109-4722	1	Asm, Discharge Chute	51	103-8072	1	Kit, Idler Arm W/Bearings ●
12	103-9087	1	Kit, Center Blade Spindle (Long) ▲	52	32120-10	4	Ring-Retaining
13	103-2982	4	Key-Machine 1/4 X 3/16 X 3/4	53	103-8071	1	Kit, Idler Arm W/Bearings ●
14	103-2791	1	Sheave, Mower Drive ▲	54	302-40	2	Zerk-90° 1/4-28
15	103-1330	3	Guard-Bearing Top ▲	55	103-2279	1	Complete Deck Assy
16	103-8280	3	Kit, Cutter Housing ▲	56	1-413525	2	Link, Rear Deck Support
17	322-3	1	Screw-HH 5/16-18 X 3/4	57	1-613204	2	Balljoint
18	1-411532	2	Kit, Support Link W/Pin	58	1-603299	5	Roller-Scalp, Anti
19	1-633173	1	Belt, Blade Drive	59	103-4051	5	Kit, Anti Scalp
20	323-23	1	Screw-HH 3/8-16 X 4-1/2	60	99-2842	5	Spacer
21	103-9083	1	Housing, Cutter Complete (Center)	61	1-603620-01	1	Bracket, Spring Anchor
22	103-9076	2	Housing, Cutter Complete (Outer)	62	98-5961	2	Screw-HH 3/8-16 X 4 Gr8
23	103-3209	1	Spacer, Tube	63	1-603414	1	Spring-Extension
24	1-413425	2	Spacer	64	116-2072-01	1	Baffle
25	3256-82	3	Washer	65	1-603001	2	Rod, Deck Support
26	323-9	2	Screw-HH 3/8-16 X 1 3/4	66	3256-24	5	Washer-3/8 Sae
27	1-603050	4	Spacer	67	103-6403	3	Blade, Notched 20.5 (.94 Hole)
28	1-633988	1	Spacer-Anchor, Clutch	67	103-6383	3	Blade, Solid
29	1-800017	2	Bolt-HH 5/16-18 X 3 1/4 Tap	67	103-6388	3	Blade, Low Lift
30	1-513791	1	Bushing	67	103-6393	3	Blade, Mulching ■
31	3256-3	6	Washer-5/16 Std	67	103-6398	3	Blade, Extreme
32	323-12	4	Screw-HH 3/8-16 X 2 1/2	68	1-806009	4	Hairpin-Cotter #206
33	3220-3	2	Nut-Jam 3/8-24	69	1-323539	2	Spacer-Blade Drive
34	1-603805	1	Pulley-Idler	70	1-806332	2	Rollpin 1/4 X 1 1/2
35	1-613098	1	Pulley-Idler	71	103-3505	2	Seal-Double Lip
36	109-4653	1	Deck, (116-3586-01) W/ Decals	72	103-3504	4	Bearing-Spherical
37	109-2738	1	Chute,Discharge	73	1-413088	2	Spacer
38	322-5	2	Screw-HH 5/16-18 X 1	74	106-7159	4	O-Ring
39	3296-29	8	Nut-Nyloc 5/16-18	75	109-6658	5	Nut-Nyloc 3/8-16 Flg
40	322-2	5	Screw-HH 5/16-18 X 5/8	76	103-3037	3	Bushing,Splined
				77	109-4573-01	1	Bracket, Discharge Chute
				78	3230-22	3	Bolt-Carriage 5/16-18 X 1 Sp

● Assembly also includes Washer and Screw

■ Requires installation of mulch kit for proper mulching. See your Exmark dealer for details.

▲ Apply Mobil HTS grease (P/N 103-5217 1.5 oz packet) (or a food-grade anti-seize). See operator s manual for locations.



## Decals

Ref.	Part Number	Qty.	Description
1	1-553049	1	Decal-Anti Scalp
2	1-303508	1	Decal-Warning, Discharge
3	98-5954	3	Decal-Cover, Missing
4	109-3148	1	Decal,Bolt Torque
5	116-2744	1	Decal-Belt Routing
6	1-403005	2	Decal-Danger
7	103-2076	1	Decal-Caution
8	103-3013	1	Decal-Turf Tracer
10	116-0025	1	Decal-Ultracut 60 Series 4
99	103-5828	1	Kit-Decal •

• Not illustrated



**Notes:**

**Notes:**

**Notes:**

## SEE EXMARK'S COMPLETE LINE OF ACCESSORIES AND OPTIONS

### MID-MOUNT RIDING ACCESSORIES AND OPTIONS

CUSTOM RIDE SEAT SUSPENSION SYSTEM	OPERATOR CONTROLLED DISCHARGE
FULL SUSPENSION SEAT	ROLL OVER PROTECTION SYSTEM (ROPS)
DECK LIFT ASSIST KIT	SUN SHADE
HITCH KIT	TRASH CONTAINER
LIGHT KIT	TURF STRIPER
12V POWER PORT	ULTRA VAC COLLECTION SYSTEM
MICRO-MULCH SYSTEM	ULTRA VAC QUICK DISPOSAL SYSTEM

### OUT-FRONT RIDING ACCESSORIES AND OPTIONS

CUSTOM RIDE SEAT SUSPENSION SYSTEM	SNOW BLADE
DUAL-TAIL WHEEL	SNOWBLOWER
FLOOR PAN EXTENDER	SUN SHADE
HITCH KIT	TRASH CONTAINER
LIGHT KIT	ULTRA VAC COLLECTION SYSTEM
MICRO-MULCH SYSTEM	ULTRA VAC QUICK DISPOSAL SYSTEM
ROLL OVER PROTECTION SYSTEM (ROPS)	WEATHER CAB

### WALK-BEHIND ACCESSORIES AND OPTIONS

GRASS CATCHER	TURF STRIPER
MICRO-MULCH SYSTEM	STANDON

Place Model No. and Serial No.  
Label Here (Included in the Literature  
Pack) or Fill in Below

Model No. \_\_\_\_\_

Serial No. \_\_\_\_\_

Date Purchased \_\_\_\_\_

Engine Model No. and Spec. No. \_\_\_\_\_

Engine Serial No. (E/No) \_\_\_\_\_

© 2010 Exmark Mfg. Co., Inc.  
Industrial Park Box 808  
Beatrice, NE 68310  
All Rights Reserved

Part No. 4500-828 Rev. A  
(402) 223-6300  
Fax (402) 223-5489  
Printed in the USA.

