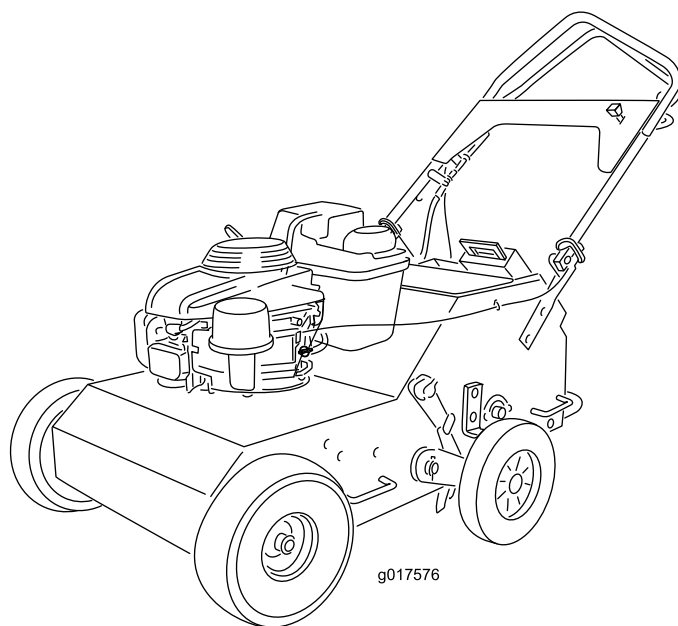




21 IN WALK-BEHIND AERATOR

Model No. ARS180KA21—Serial No. 31200000 and Up

Picture below may not reflect actual product.



Parts Manual

Ordering Replacement Parts

To order replacement parts, please supply the part number, the quantity, and the description of each part desired.

Understanding Reference Numbers

Each identified part in an illustration has a reference number. The reference number for a part also appears in the parts list, along with other information about the part.

This catalog uses two special reference number formats, one to indicate parts in a service assembly and another to indicate the quantity of a given part in an illustration.

Service Assembly Reference Numbers

Parts in service assemblies have reference numbers in the form a:b. The a represents the reference number of the entire service assembly and the b represents a sequential number unique to each part within the service assembly.

For example, a wheel assembly might be identified by reference number 6, the tire by 6:1, the valve by 6:2, and the wheel by 6:3. When you order the assembly identified by reference number 6, you receive all parts identified by reference numbers 6:1, 6:2, and 6:3. However, you may also order any part individually. Reference numbers of this type appear in illustration and in parts lists.

Reference Numbers Indicating Quantity

In an illustration, if a reference number indicates more than one part, the reference number has the form nX y. The n represents the quantity of the part, the X is the multiplication symbol, and the y represents the reference number.

For example, in an illustration, the reference number 2X 37 means that two of the parts identified by reference number 37 are indicated.

List of Abbreviations

AR: as required	HJ: hex jam	PRH: phillips round head
ASM: assembly	HLH: hex lag head	PTH: phillips truss head
BBC: blade brake control	HOC: height-of-cut	PTO: power-take-off
BHTF: button head thread forming	HSBH: hex socket button head	RH: right hand
CARR: carriage	HSFH: hex socket flat head	ROPS: roll-over protection system
CCW: counter clockwise	HSH: hex socket head	RRB: rear roller brush
CW: clockwise	HWH: hex washer head	SFH: slotted fillister head
DEG: degrees	HWHTF: hex washer head thread forming	SHH: slotted hex head
DPA: Dual Point Adjustment	HYD: hydraulic	SHWH: slotted hex washer head
ECM: electronic control module	LH: left hand	SPH: slotted pan head
EXT: external	LP: Liquefied Petroleum Gas	SQH: square head
FH: flat head	LPG: Liquefied Petroleum Gas	SRH: slotted round head
GA: gauge	NI: nylon insert	STD: standard
HD: heavy-duty	NPTF: national pipe thread fine	TAP: self tapping
HF: hex flange	PFH: phillips flat head	TTH: torx truss head
HH: hex head	PPH: phillips pan head	
HHF: hex head flange	PPHTF: phillips pan head thread forming	
HHFTF: hex head flange thread forming		

Touch Up Paint

Exmark black touch up spray paint – gloss black.

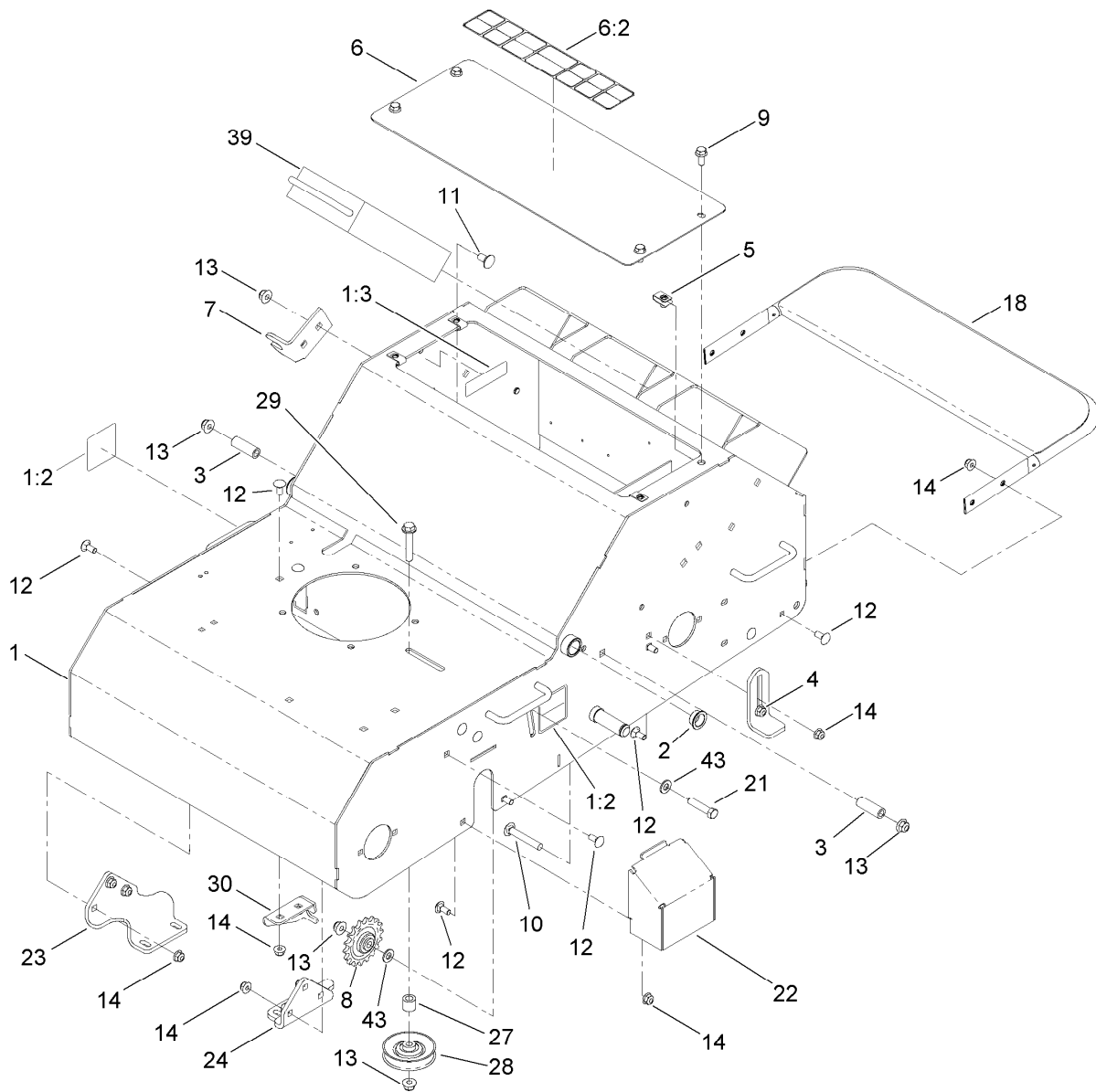
Exmark red touch up paint (spray paint – P/N 1-850337 - .6 oz liquid bottle – P/N 103-9140).



If your Exmark dealer does not have the Exmark part in stock, Exmark will get the parts to the dealer the next business day or the part will be FREE Guaranteed!! (Some restrictions apply. See your participating Exmark Dealer for details.)

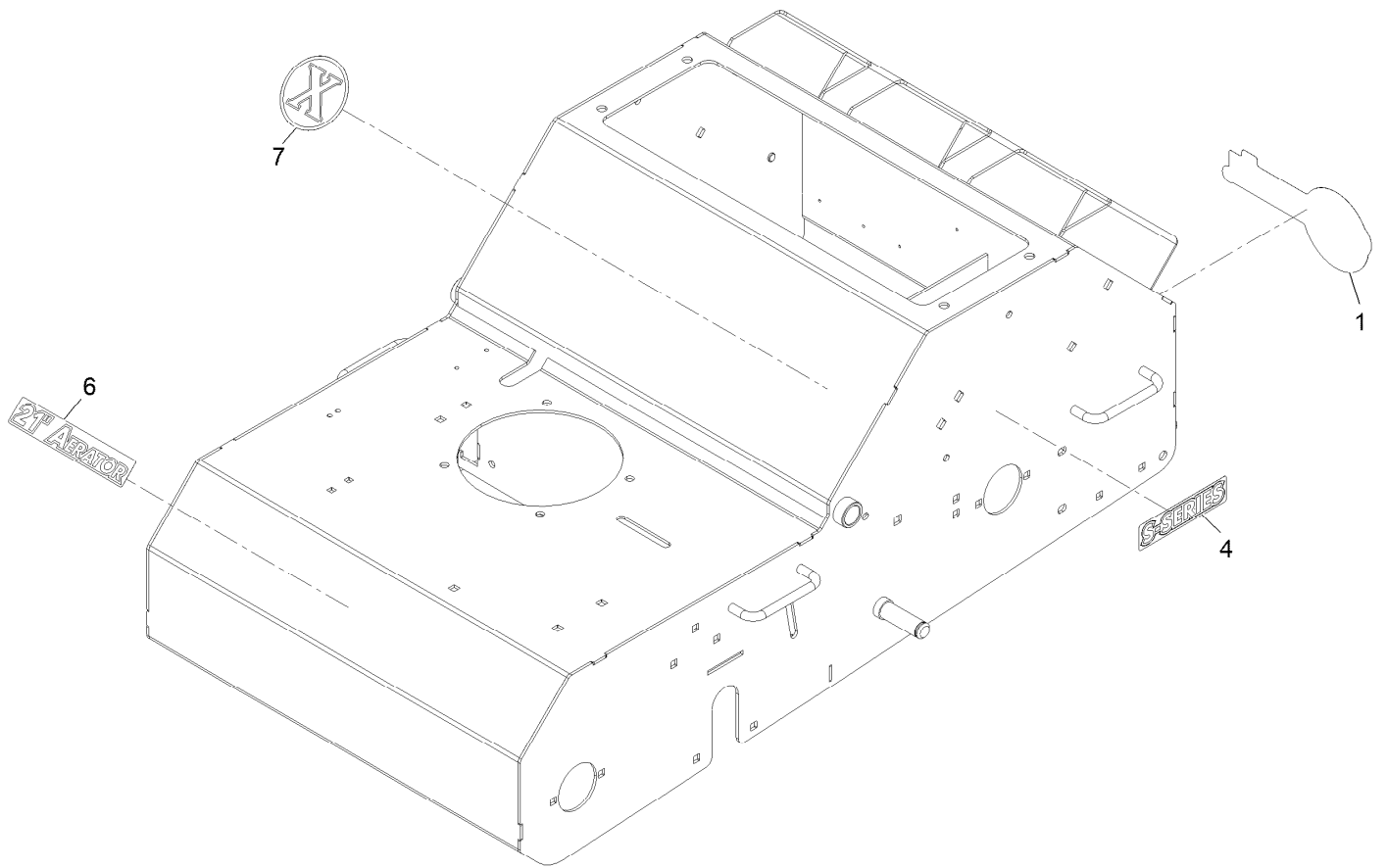
Contents

Frame Assembly..... 4
Frame Assembly W/Decals 5
Engine and Fuel Tank Assembly 6
Drive Assembly..... 7
Handle Assembly 8
Height Linkage Assembly 9
Tine Assembly 10



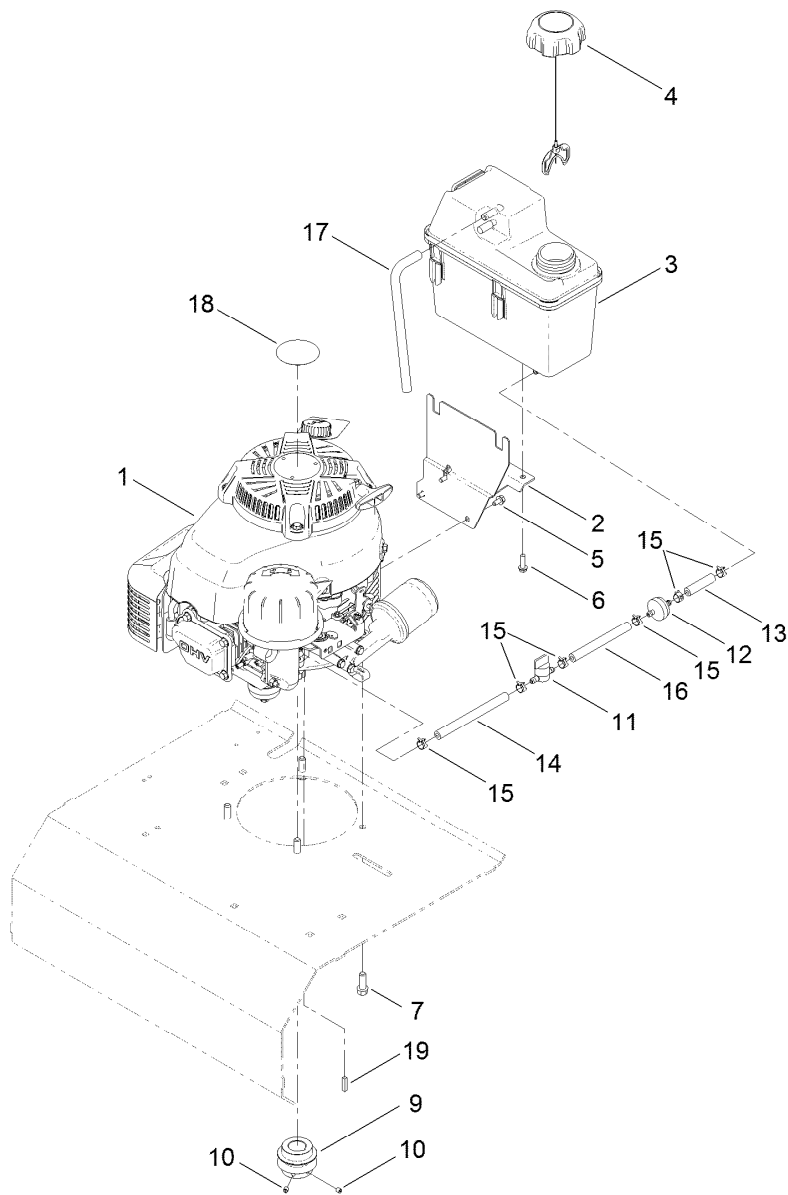
Frame Assembly

<i>Ref.</i>	<i>Part Number</i>	<i>Qty.</i>	<i>Description</i>	<i>Ref.</i>	<i>Part Number</i>	<i>Qty.</i>	<i>Description</i>
1	121-6194	1	Frame ASM	12	3230-1	20	Bolt-Carriage 5/16-18 X 3/4
1:2	121-6150	2	Decal-Warning	13	104-8301	7	Nut-Nyloc 3/8-16 Flg
1:3	119-0217	1	Decal-Danger	14	104-8300	20	Nut-Nyloc 5/16-18 Flg
2	108519	2	Bushing-Bronze	18	121-2034-03	1	Guard
3	95-6448	2	Spacer	21	323-9	2	Screw-HH 3/8-16 X 1 3/4
4	121-4871	2	Stop-Depth	22	121-1981-01	2	Cover-Transaxle
5	115-7721	4	Nut-Clip, U	23	121-4948-03	1	Bracket-Mount Axle, RH
6	121-6195	1	Cover ASM	24	121-4949-03	1	Bracket-Mount Axle, LH
6:2	121-2009	1	Decal-Warning, Aerator	27	121-6087	1	Bushing-Idler
7	121-4880	1	Bracket-Mount, Cable	28	62-4530	1	Pulley
8	121-4915	2	Sprocket-Idler	29	323-11	1	Screw-HH 3/8-16 X 2 1/4
9	3234-47	4	Screw-HH Flg 5/16-18 X 3/4	30	121-6056	1	Bracket-Mounting, Cable
10	3231-44	2	Bolt-Carriage 3/8-16 X 2 1/2	39	121-6080	1	Weight-Aerator
11	3231-1	2	Bolt-Carriage 3/8-16 X 3/4	43	3256-24	5	Washer-3/8 Sae



Frame Assembly W/Decals

Ref.	Part Number	Qty.	Description
1	103-2882	1	Decal,Exmark Logo
4	116-3884	2	Decal-S-Series
6	116-6953	1	Decal-Aerator 21
7	116-7035	1	Decal-Exmark X-Logo



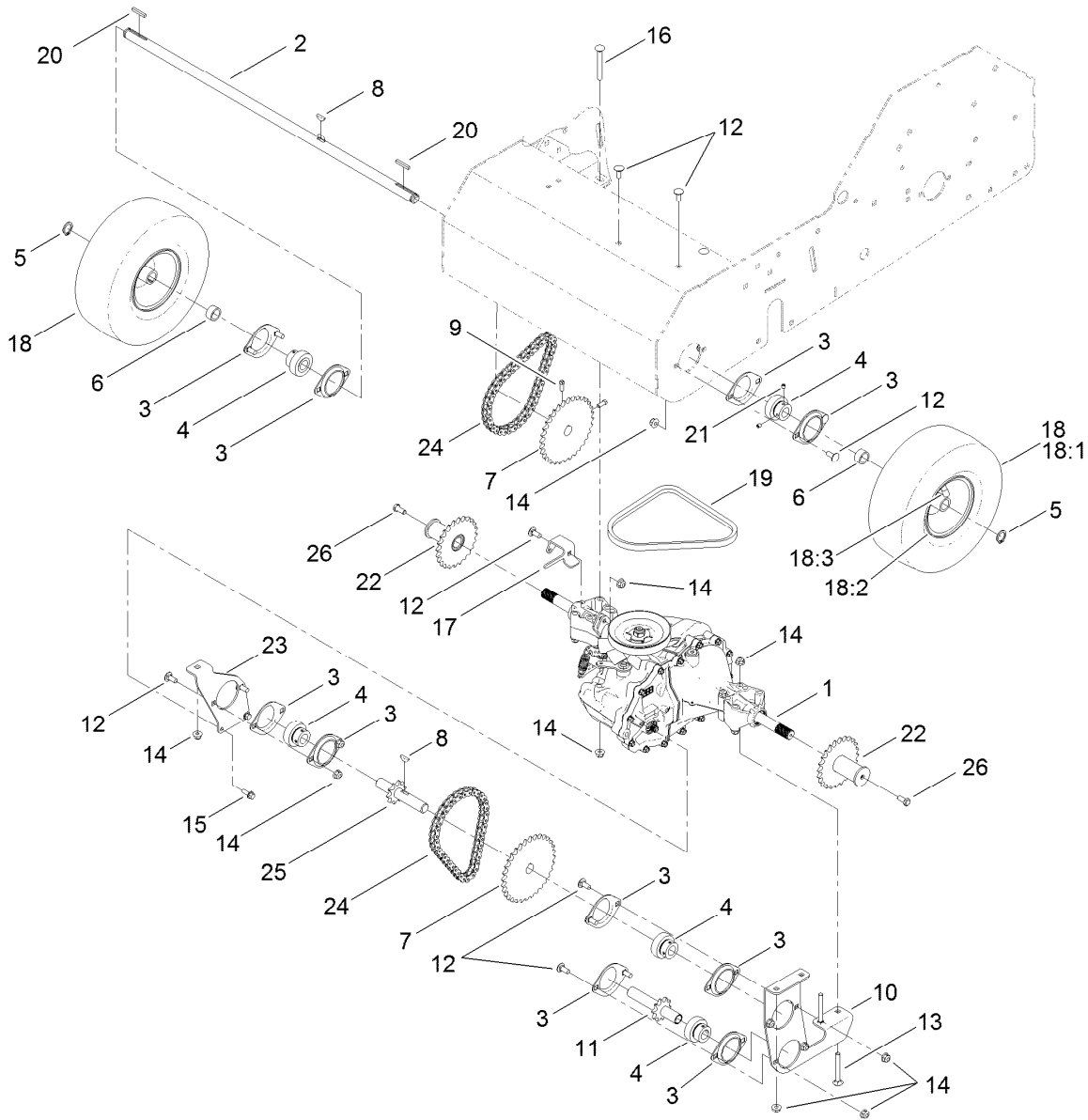
Engine and Fuel Tank Assembly

Ref.	Part Number	Qty.	Description	Ref.	Part Number	Qty.	Description
1		1	Engine-Kawasaki, Fj180V-Bm02-M ●■	10	3245-35	2	Screw-Set HSH 1/4-28 X 1/4 ▲
2	115-0954-03	1	Tank Mount ASM	11	1-603770	1	Valve-Fuel
3	125-5066	1	Tank ASM	12	71-9280	1	Filter-Fuel
4	109-6776	1	Cap-Ratchet, Tethered	13	99-9415	1	Hose-Fuel
5	104-2628	3	Screw-HWH M6-1 X 12Mm Tf	14	109-0300	1	Hose-Fuel
6	46-8091	2	Screw-HWH 1/4-10 X .82 Plastite	15	2412-98	6	Clamp-Hose
7	95-1726	4	Screw-HWH 3/8-16 X 1 Taptite	16	109-0650	1	Hose-Fuel
9	121-2038	1	Pulley-Driver	17	115-0962	1	Hose-Vent, Canister
				18	109-6528	1	Decal
				19	6366	1	Key-3/16 X 3/16 X 7/8

● Not serviced separately

▲ Use Pro-Lock, Nut Type (P/N 1-840022, .5ml tube) on threads.

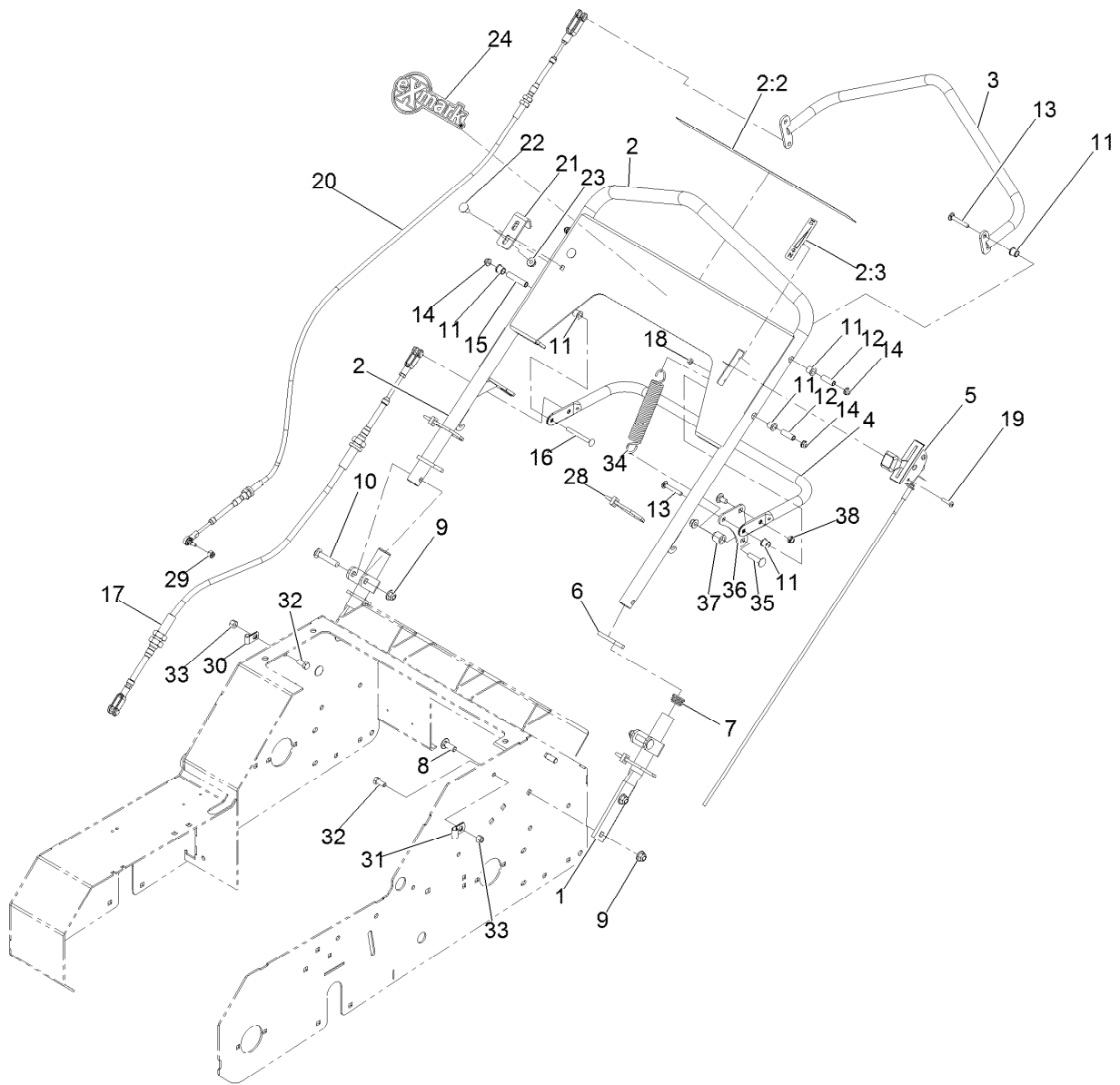
■ Obtain parts from www.kawpowerpc.com



Drive Assembly

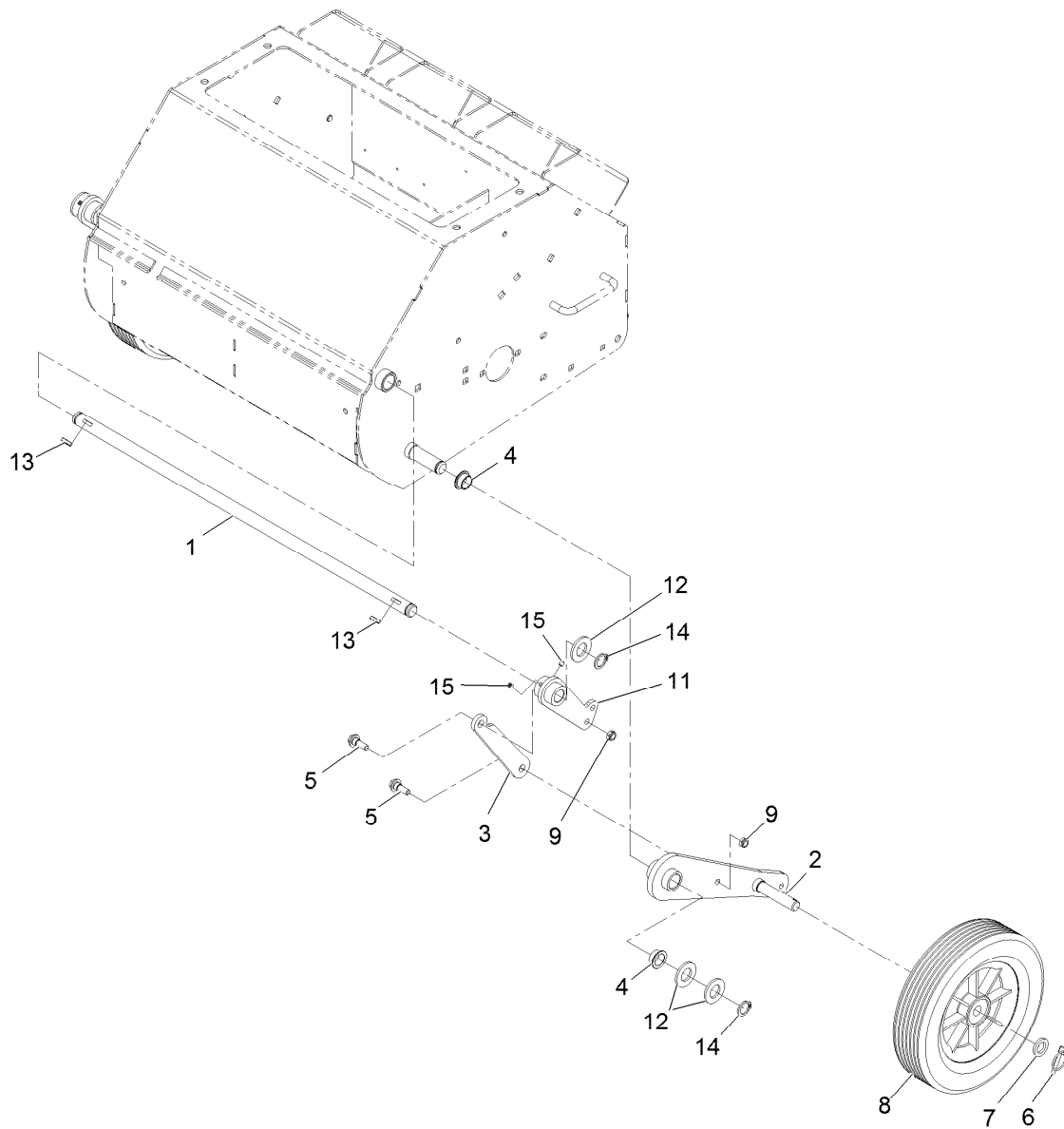
Ref.	Part Number	Qty.	Description	Ref.	Part Number	Qty.	Description
1	121-4899	1	Transaxle ASM	16	3230-9	4	Bolt-Carriage 5/16-18 X 2 3/4
2	121-4927	1	Shaft-Wheel	17	121-6067	1	Angle-Control
3	105-9714	10	Flange-Bearing	18	120-3550	2	Wheel ASM
4	120-9350	5	Bearing-Lock, Collar	18:1	121-6081	1	Tire
5	32120-93	2	Ring-Retaining	18:2	121-6082	1	Wheel-Rim
6	121-4931	2	Spacer-Wheel	18:3	5108	1	Valve
7	121-4934	2	Sprocket	19	121-1999	1	Belt-Drive
8	3257-5	2	Key-Woodruff #9 3/4 X 3/16	20	92-0049	2	Key-Machine 3/16 X 3/16 X 1 1/4
9	3241-5	4	Setscrew-SQH 1/4-20 X 5/8	21	3245-35	10	Screw-Set HSH 1/4-28 X 1/4
10	121-4936-03	1	Plate-Bearing	22	121-1976	2	Sprocket ASM
11	121-4937	1	Shaft-Output	23	121-4932-03	1	Bracket-Support, Shaft
12	3230-23	14	Bolt-Carriage 5/16-18 X 3/4 Short Neck	24	121-6105	2	Chain-Drive Wheel #40
13	3230-8	2	Bolt-Carriage 5/16-18 X 2 1/2	25	121-6108	1	Shaft-Jack
14	104-8300	20	Nut-Nyloc 5/16-18 Flg	26	3235-6	2	Screw-HH 5/16-24 X 3/4
15	3234-4	2	Screw-HH Flg 1/4-20 X 3/4				

● Use Pro-Lock, Nut Type (P/N 1-840022, .5ml tube) on threads.



Handle Assembly

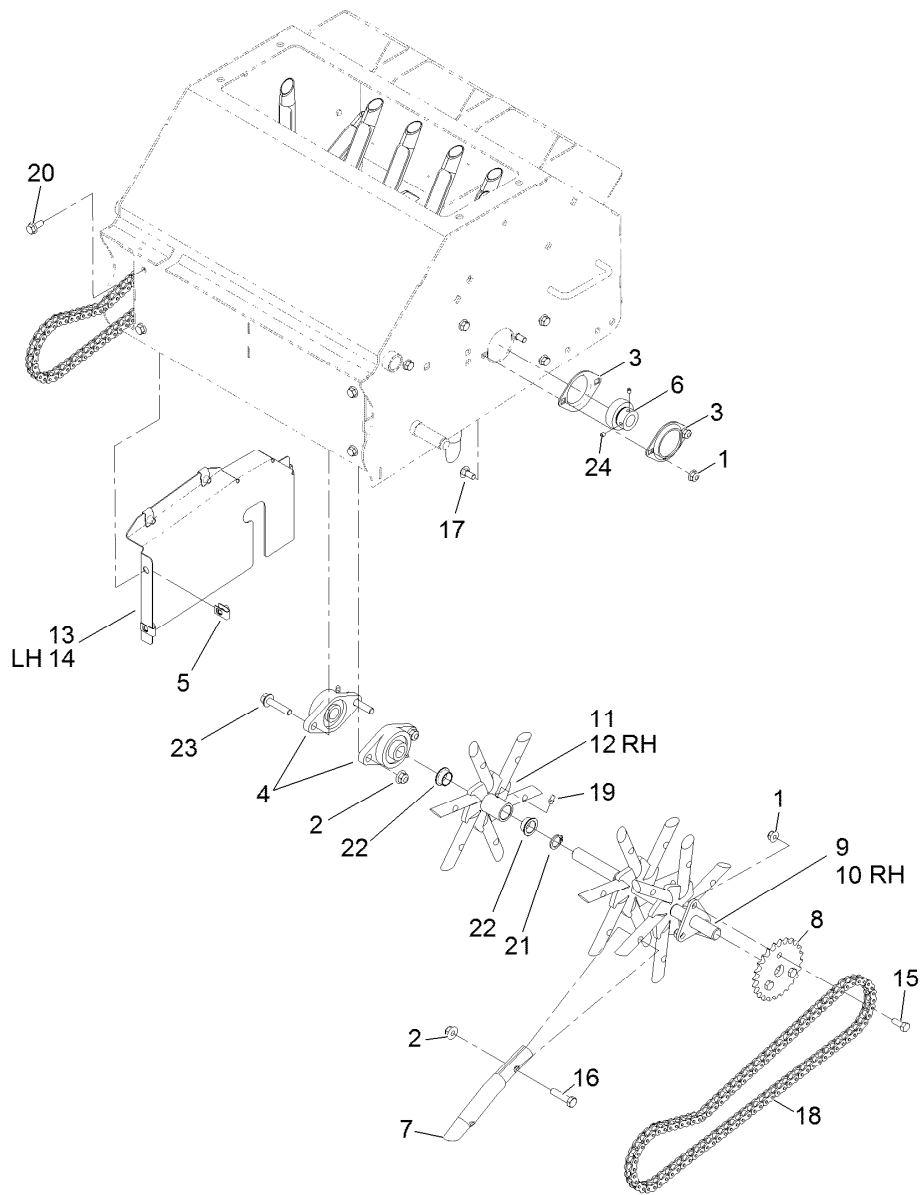
Ref.	Part Number	Qty.	Description	Ref.	Part Number	Qty.	Description
1	121-4866-03	2	Mount-Handle	18	3296-2	3	Nut-Nyloc #10-24
2	121-6199	1	Handle ASM	19	3250-27	2	Screw-PPH #10-24 X 7/8
2:2	116-8699	1	Decal-Aerator Control Panel	20	121-6068	1	Cable
2:3	121-6151	1	Decal-Throttle, Choke	21	121-6057	1	Angle-Stop
3	121-6053-03	1	Tube-Control	22	3230-18	2	Bolt-Carriage 5/16-18 X 5/8
4	121-6058-03	1	Tube-Lift, Handle	23	104-8300	2	Nut-Nyloc 5/16-18 Flg
5	103-6123	1	Control-Throttle	24	1-643103	1	Decal,Exmark Logo
6	121-4869	2	Ring-Lock, Handle	28	3290-378	2	Tie-Cable
7	121-4870	2	Plug	29	3296-3	1	Nut-Nyloc 1/4-28
8	3231-22	4	Bolt-Carriage 3/8-16 X 1	30	98-2390	1	Clamp-R
9	104-8301	6	Nut-Nyloc 3/8-16 Flg	31	2412-113	1	Clamp
10	3231-6	2	Bolt-Carriage 3/8-16 X 2	32	322-3	2	Screw-HH 5/16-18 X 3/4
11	103-9928	8	Bearing	33	3296-29	2	Nut-Nyloc 5/16-18
12	121-6060	3	Bushing-Pivot	34	106-2177	1	Spring-Extension
13	3229-5	3	Screw-CARR	35	112-6950	1	Bolt-Carriage 5/16-18 X 1 3/8 Short Neck
14	104-7201	4	Nut-Nyloc 1/4-20 Flg	36	116-8650	1	Bracket-Spring
15	121-6062	1	Bushing-Pivot	37	116-8652	1	Spacer-Stepped
16	3229-8	1	Bolt-Carriage 1/4-20 X 2 1/2	38	3296-47	1	Nut-Nyloc 5/16-18 Thin
17	121-4904	1	Cable				



Height Linkage Assembly

Ref.	Part Number	Qty.	Description
1	121-4873	1	Shaft-Pivot
2	121-4886-03	2	Arm-Wheel
3	121-6212-03	2	Link-Connecting
4	108519	4	Bushing-Bronze
5	116-2670	4	Screw-Shoulder HHF 5/16-18 X .96
6	3290-495	2	Pin-Klik
7	63-9710	2	Spacer-Bearing
8	121-4897	2	Wheel-Transport
9	3296-47	4	Nut-Nyloc 5/16-18 Thin
11	121-6213-03	2	Arm-Lift
12	3256-28	6	Washer-3/4 Sae
13	3257-5	2	Key-Woodruff #9 3/4 X 3/16
14	32120-93	4	Ring-Retaining
15	108-0989	4	Setscrew-1/4-20 X 1/4 ●

● Use Pro-Lock, Nut Type (P/N 1-840022, .5ml tube) on threads.



Tine Assembly

Ref.	Part Number	Qty.	Description	Ref.	Part Number	Qty.	Description
1	104-8300	10	Nut-Nyloc 5/16-18 Flg	14	121-6078-01	1	Guard-Chain, LH
2	104-8301	38	Nut-Nyloc 3/8-16 Flg	15	322-4	6	Screw-HH 5/16-18 X 7/8
3	105-9714	4	Flange-Bearing	16	323-8	38	Screw-HH 3/8-16 X 1 1/2
4	106-7126	2	Bearing-Flange	17	3230-1	4	Bolt-Carriage 5/16-18 X 3/4
5	115-7721	12	Nut-Clip, U	18	121-6107	2	Chain-Drive
6	120-9350	2	Bearing-Lock, Collar	19	302-19	2	Zerk-1/4-28 Str
7	121-4894	36	Tine-Coring	20	3234-47	12	Screw-HH Flg 5/16-18 X 3/4
8	121-4900	2	Sprocket	21	32120-93	2	Ring-Retaining
9	121-4930-01	1	Tine-Wheel, LH	22	108519	4	Bushing-Bronze
10	121-6072-01	1	Tine-Wheel, RH	23	3234-19	2	Screw-HHF 3/8-16 X 1 3/4
11	121-6099-01	1	Spyder Tine ASM	24	3245-35	4	Screw-Set HSH 1/4-28 X 1/4 ●
12	121-6096-01	1	Spyder Tine ASM				
13	121-6077-01	1	Guard-Chain, RH				

● Use Pro-Lock, Nut Type (P/N 1-840022, .5ml tube) on threads.

EXMARK® MAINTENANCE

MAXIMIZE THE PERFORMANCE OF YOUR EXMARK.

4-CYCLE PREMIUM ENGINE OIL

Part No. 116-3373

Both SAE 30 and SAE 10W-30 in one bottle.

Contains increased levels of zinc and phosphorus for better lubricity.

No Viscosity Index Improvers that tend to shear down in high heat.

Synthetic formulation.

Gas & Diesel compatible.

Anti-corrosion additives.

API 'SL' and JASO rated with wet clutch compatibility for other machines.

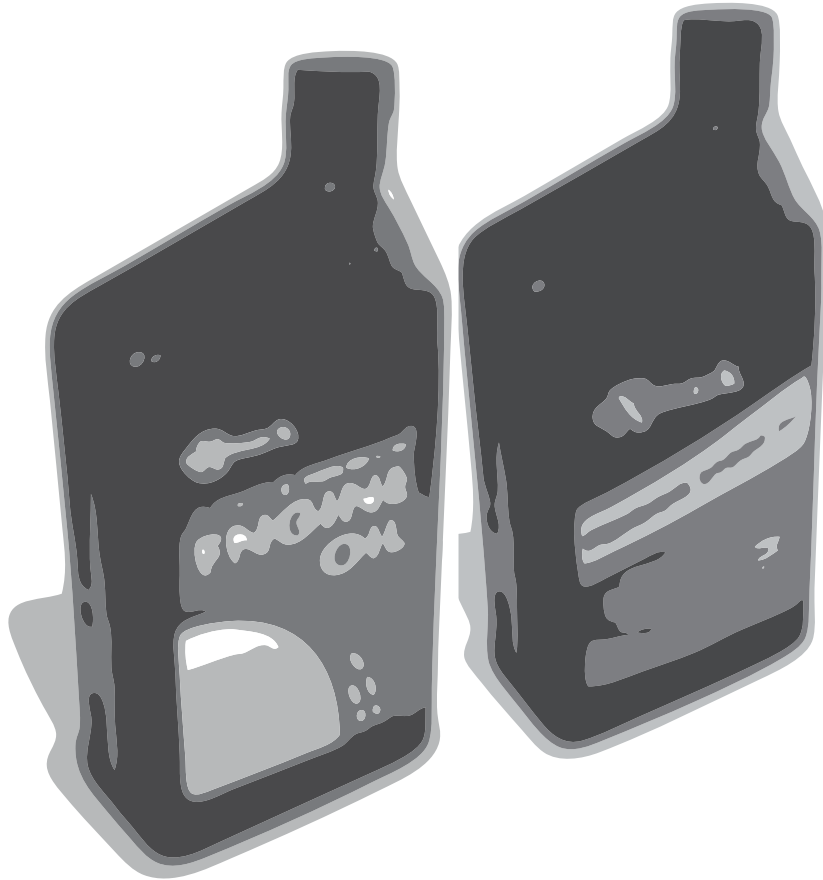
PREMIUM HYDRO OIL

Part No. 109-9828

Commercial quality for tough, high-heat conditions.

Designed specifically for zero-turn mower hydraulic systems.

Superior shear resistance under heavy loads.



Available from your local Exmark dealer. Find your closest dealer at exmark.com

EXMARK ACCESSORIES AND OPTIONS*

MID-MOUNT RIDING ACCESSORIES AND OPTIONS

CUSTOM RIDE SEAT SUSPENSION SYSTEM	OPERATOR CONTROLLED DISCHARGE
FULL SUSPENSION SEAT	SUN SHADE
DECK LIFT ASSIST KIT	TRASH CONTAINER
HITCH KIT	TURF STRIPER
LIGHT KIT	ULTRA VAC COLLECTION SYSTEM
12V POWER PORT	ULTRA VAC QUICK DISPOSAL SYSTEM
MICRO-MULCH SYSTEM	

OUT-FRONT RIDING ACCESSORIES AND OPTIONS

CUSTOM RIDE SEAT SUSPENSION SYSTEM	SNOW BLADE
DUAL-TAIL WHEEL	SNOWBLOWER
FLOOR PAN EXTENDER	SUN SHADE
HITCH KIT	TRASH CONTAINER
LIGHT KIT	ULTRA VAC COLLECTION SYSTEM
MICRO-MULCH SYSTEM	ULTRA VAC QUICK DISPOSAL SYSTEM
ROLL OVER PROTECTION SYSTEM (ROPS)	WEATHER CAB

WALK-BEHIND ACCESSORIES AND OPTIONS

GRASS CATCHER	TURF STRIPER
MICRO-MULCH SYSTEM	STANDON

*Some accessories and options not available for some models.

Place Model No. and Serial No.
Label Here (Included in the Literature
Pack) or Fill in Below

Model No. _____

Serial No. _____

Date Purchased _____

Engine Model No. and Spec. No. _____

Engine Serial No. (E/No) _____

© 2013 Exmark Mfg. Co., Inc.
Industrial Park Box 808
Beatrice, NE 68310
All Rights Reserved

Part No. 4501-210 Rev. B
(402) 223-6300
Fax (402) 223-5489
Printed in the USA.

