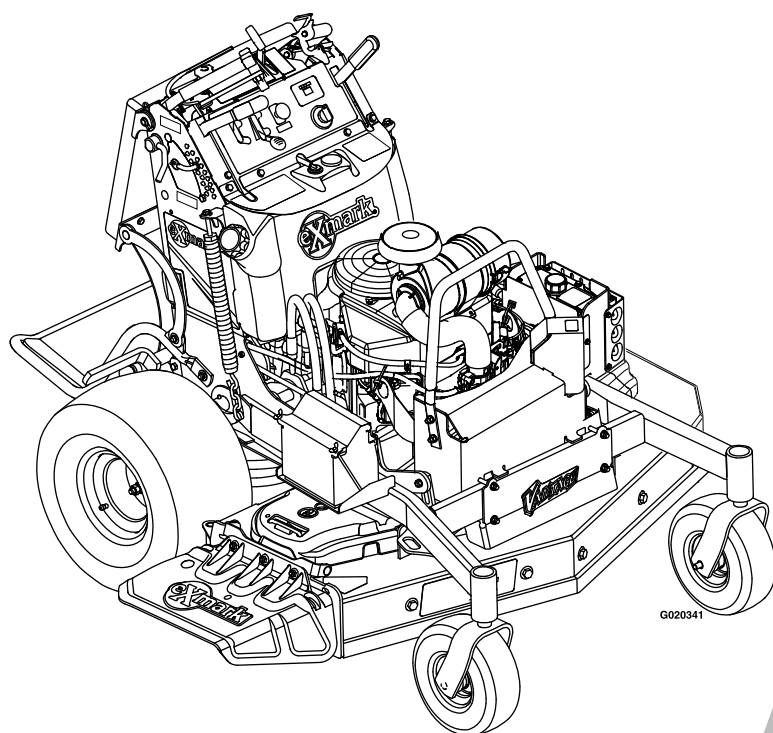




VANTAGE® X-SERIES

Model No. VTX691KA524—Serial No. 31300000 and Up

Picture below may not reflect actual product.



Parts Manual

Part No. 4501-521 Rev. A

Ordering Replacement Parts

To order replacement parts, please supply the part number, the quantity, and the description of each part desired.

Understanding Reference Numbers

Each identified part in an illustration has a reference number. The reference number for a part also appears in the parts list, along with other information about the part.

This catalog uses two special reference number formats, one to indicate parts in a service assembly and another to indicate the quantity of a given part in an illustration.

Service Assembly Reference Numbers

Parts in service assemblies have reference numbers in the form a:b. The a represents the reference number of the entire service assembly and the b represents a sequential number unique to each part within the service assembly.

For example, a wheel assembly might be identified by reference number 6, the tire by 6:1, the valve by 6:2, and the wheel by 6:3. When you order the assembly identified by reference number 6, you receive all parts identified by reference numbers 6:1, 6:2, and 6:3. However, you may also order any part individually. Reference numbers of this type appear in illustration and in parts lists.

Reference Numbers Indicating Quantity

In an illustration, if a reference number indicates more than one part, the reference number has the form nX y. The n represents the quantity of the part, the X is the multiplication symbol, and the y represents the reference number.

For example, in an illustration, the reference number 2X 37 means that two of the parts identified by reference number 37 are indicated.

List of Abbreviations

AR: as required	HJ: hex jam	PRH: phillips round head
ASM: assembly	HLH: hex lag head	PTH: phillips truss head
BBC: blade brake control	HOC: height-of-cut	PTO: power-take-off
BHTF: button head thread forming	HSBH: hex socket button head	RH: right hand
CARR: carriage	HSFH: hex socket flat head	ROPS: roll-over protection system
CCW: counter clockwise	HSH: hex socket head	RRB: rear roller brush
CW: clockwise	HWH: hex washer head	SFH: slotted fillister head
DEG: degrees	HWHTF: hex washer head thread forming	SHH: slotted hex head
DPA: Dual Point Adjustment	HYD: hydraulic	SHWH: slotted hex washer head
ECM: electronic control module	LH: left hand	SPH: slotted pan head
EXT: external	LP: Liquefied Petroleum Gas	SQH: square head
FH: flat head	LPG: Liquefied Petroleum Gas	SRH: slotted round head
GA: gauge	NI: nylon insert	STD: standard
HD: heavy-duty	NPTF: national pipe thread fine	TAP: self tapping
HF: hex flange	PFH: phillips flat head	TTH: torx truss head
HH: hex head	PPH: phillips pan head	
HHF: hex head flange	PPHTF: phillips pan head thread forming	
HHFTF: hex head flange thread forming		

Touch Up Paint

Exmark black touch up spray paint – gloss black.

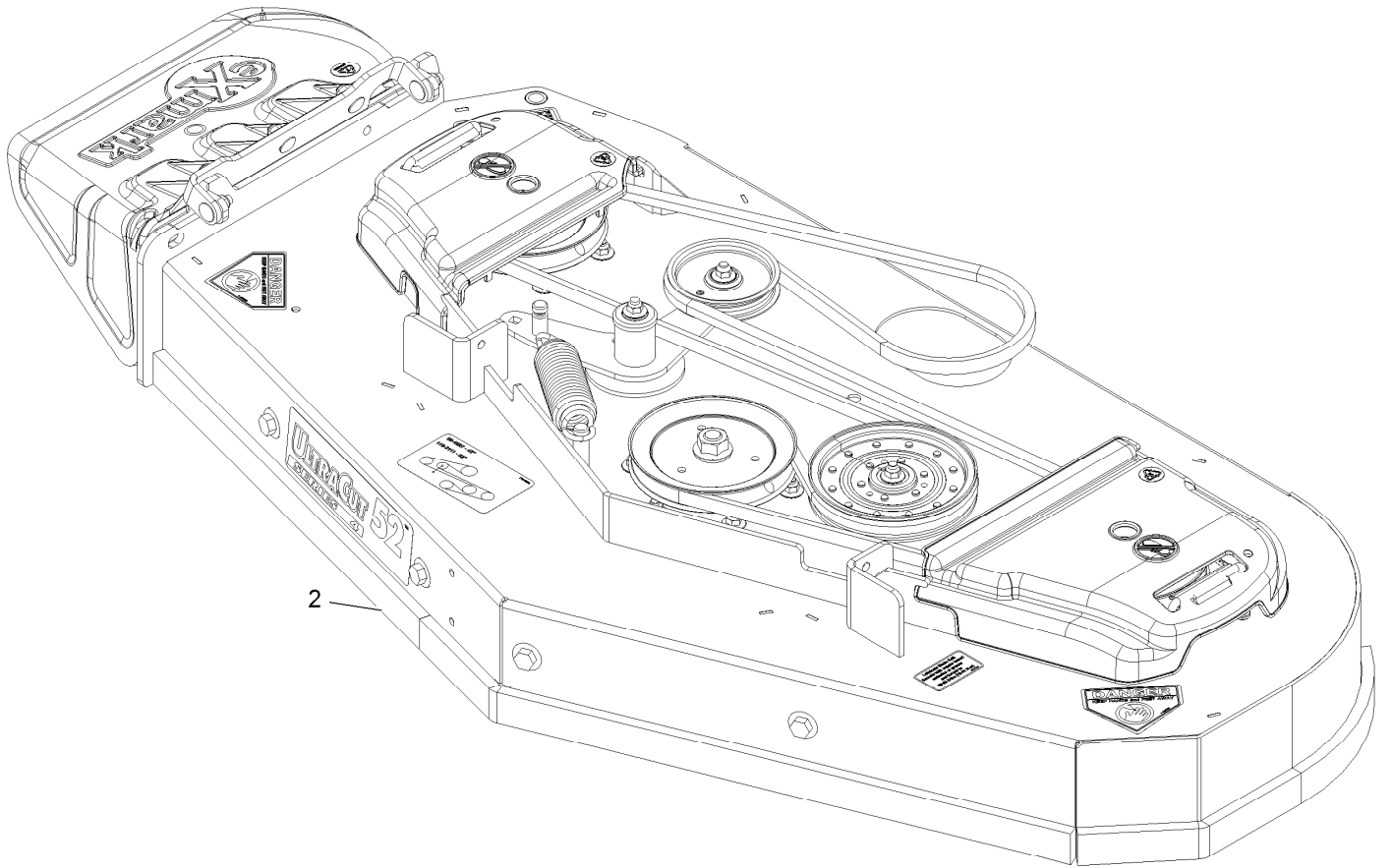
Exmark red touch up paint (spray paint – P/N 1-850337 - .6 oz liquid bottle – P/N 103-9140).



If your Exmark dealer does not have the Exmark part in stock, Exmark will get the parts to the dealer the next business day or the part will be FREE Guaranteed!! (Some restrictions apply. See your participating Exmark Dealer for details.)

Contents

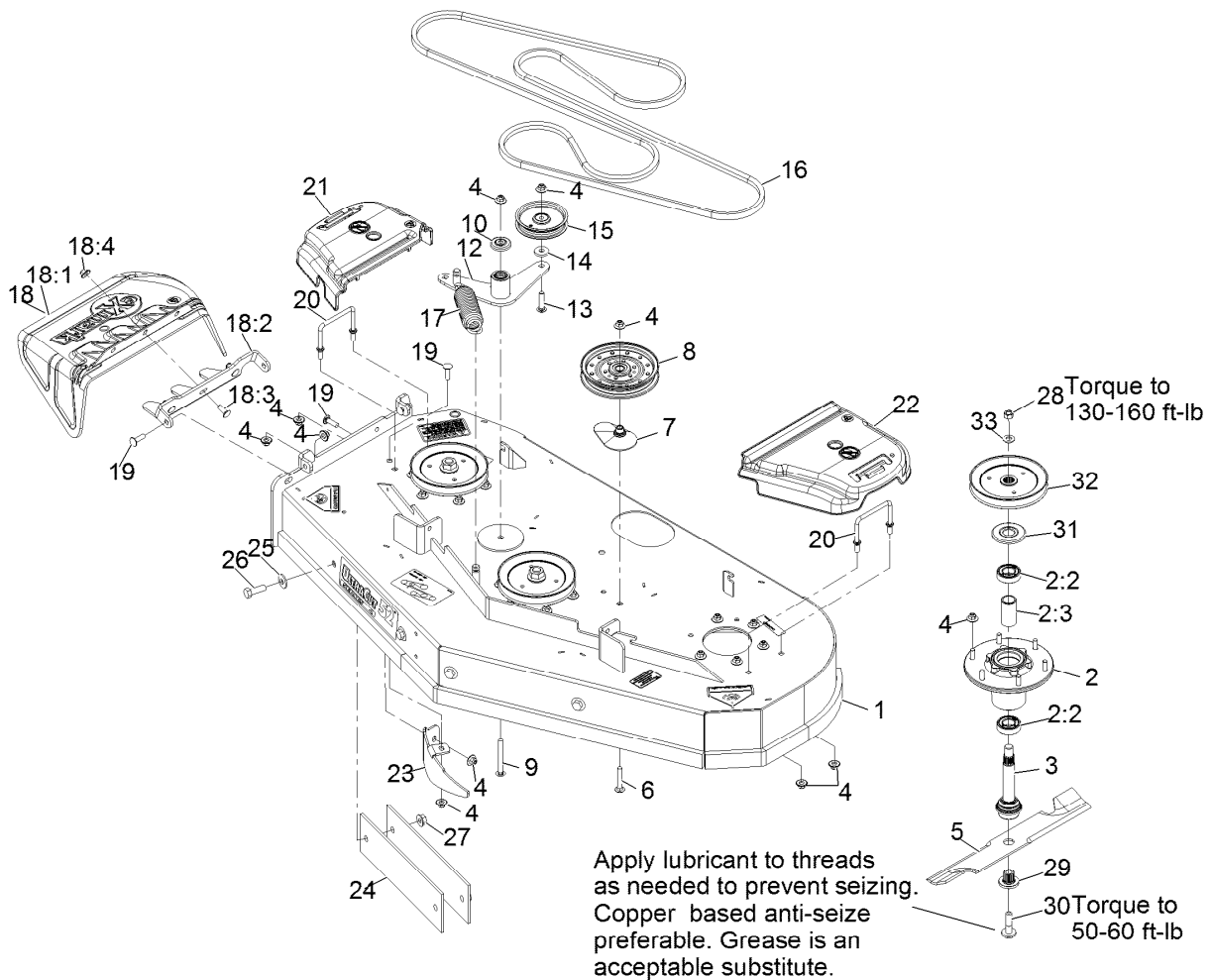
Complete Deck Assembly.....	4
Deck Assembly.....	5
Deck W/Decals Assembly No. 116-4001.....	6
Idler Arm Assembly No. 116-3806.....	7
Main Frame Assembly.....	8
Tower Assembly W/Decals No. 116-8854.....	9
Wheel and Bearing Assembly No. 112-3810.....	10
Park Brake Assembly.....	11
Deck Lift Assembly.....	12
Platform Group.....	13
Cushion Assembly No. 116-1803.....	14
Platform Assembly No. 116-1804.....	15
Ground Drive Assembly.....	16
Wheel Motor Assembly No. 116-9109.....	18
Pump Idler Assembly No. 117-7685.....	19
Controls Assembly.....	20
Vertical Adjust Link Assembly No. 116-7738.....	22
Rod Assembly No. 116-7756.....	23
Rod Assembly No. 116-8681.....	24
Engine Assembly.....	25
Fuel Assembly.....	26
Fuel Tank Assembly No. 116-4577.....	27
Electrical Assembly.....	28



2

Complete Deck Assembly

<i>Ref.</i>	<i>Part Number</i>	<i>Qty.</i>	<i>Description</i>
2	116-5012	1	ASM-Deck Complete 524

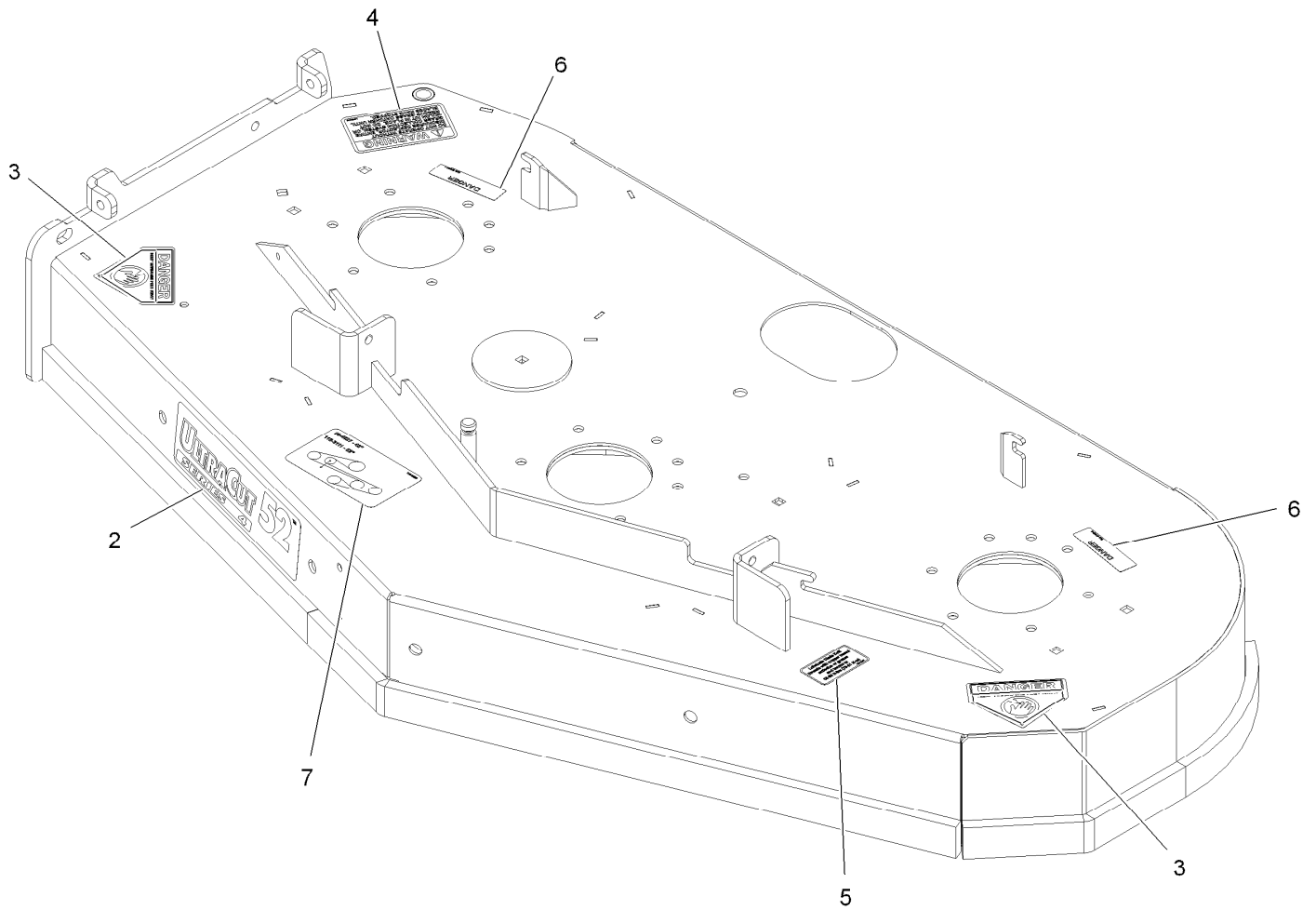


Deck Assembly

Ref.	Part Number	Qty.	Description	Ref.	Part Number	Qty.	Description
1	116-4001	1	Deck ASM-524	17	116-6317	1	Spring-Extension
2	116-3344	3	ASM-Cutter Hsg With Bearings	18	109-7188	1	ASM,Discharge Chute
2:2	116-0720	2	Bearing-Ball	18:1	109-2738	1	Chute, Discharge
2:3	116-3312	1	Spacer-Bearing	18:2	109-8675-01	1	Bracket,Discharge Chute
3	116-3341	3	ASM-Spindle And Seal ■	18:3	3231-22	3	Bolt-Carriage 3/8-16 X 1
4	109-6658	29	Nut-Nyloc 3/8-16 Flg	18:4	109-6658	3	Nut-Nyloc 3/8-16 Flg
5	103-6387	3	Blade, Low Lift	19	3231-28	4	Bolt-Carriage 3/8-16 X 1 1/4
5	103-6382	3	Blade, Solid	20	109-6982	2	Wireform-Cover
5	103-6392	3	Blade, Mulching ●	21	109-6935	1	Cover-Belt, RH
5	103-6402	3	Blade-Notched	22	109-6936	1	Cover-Belt, LH
5	116-5175	3	Blade-Extreme 2, 18.00"	23	116-5814-01	1	Baffle-Dogleg, Lz-Vt52
6	3231-7	1	Bolt-Carriage 3/8-16 X 2 1/4	24	116-1822-01	4	Bar,Weight
7	109-2872	1	Spacer-Pulley	25	1-513435	4	Washer-Spring Disc 1/2
8	116-4667	1	Idler-Pulley, Flat	26	325-6	4	Screw-HH 1/2-13 X 1 1/2
9	3231-11	1	Bolt-Carriage 3/8-16 X 3 1/2	27	32128-49	4	Nut-Whizlock 1/2-13
10	103-2916	1	Guard-Top	28	116-7306	3	Nut-Hex
12	116-3806	1	Idler Arm ASM W/Bearings	29	103-3037	3	Bushing, Splined
13	116-3381	1	Bolt-Carriage 3/8-16 X 1 3/4	30	109-9220	3	Screw-Sems 1/2-20 X 2.19
14	1-373034	1	Washer	31	116-1286	3	Guard,Bearing Top .989
15	93-1622	1	Pulley-Idler	32	116-0675	3	Sheave,Blade Drive 6.50 ■
16	116-3111	1	Belt-B158.0	33	103-2802	3	Washer-Spring Disc 3/4

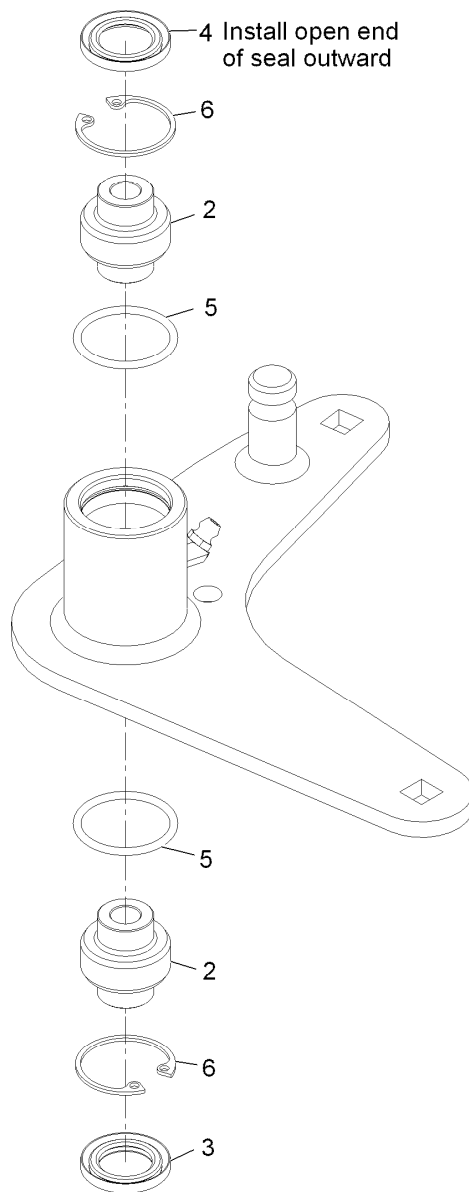
● Requires installation of mulch kit for proper mulching. See your Exmark dealer for details.

■ Apply Mobil HTS grease (P/N 103-5217 1.5 oz packet) (or a food-grade anti-seize). See operator s manual for locations.



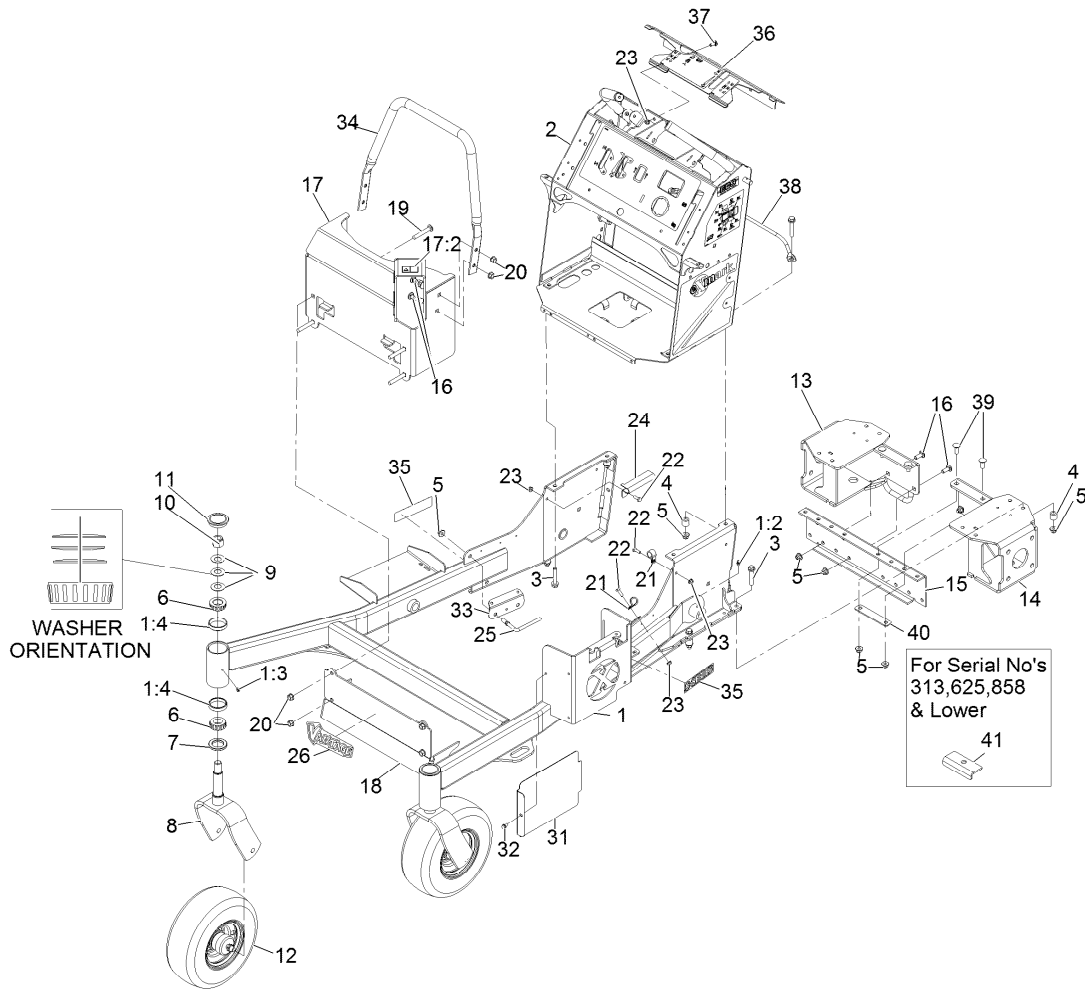
Deck W/Decals Assembly No. 116-4001

<i>Ref.</i>	<i>Part Number</i>	<i>Qty.</i>	<i>Description</i>
2	116-0034	1	Decal,Ultracut 52 Series 4
3	1-403005	2	Decal-Danger
4	1-303508	1	Decal-Warning, Discharge
5	109-3148	1	Decal, Bolt Torque
6	98-5954	2	Decal-Cover, Missing
7	116-3283	1	Decal-Belt Routing



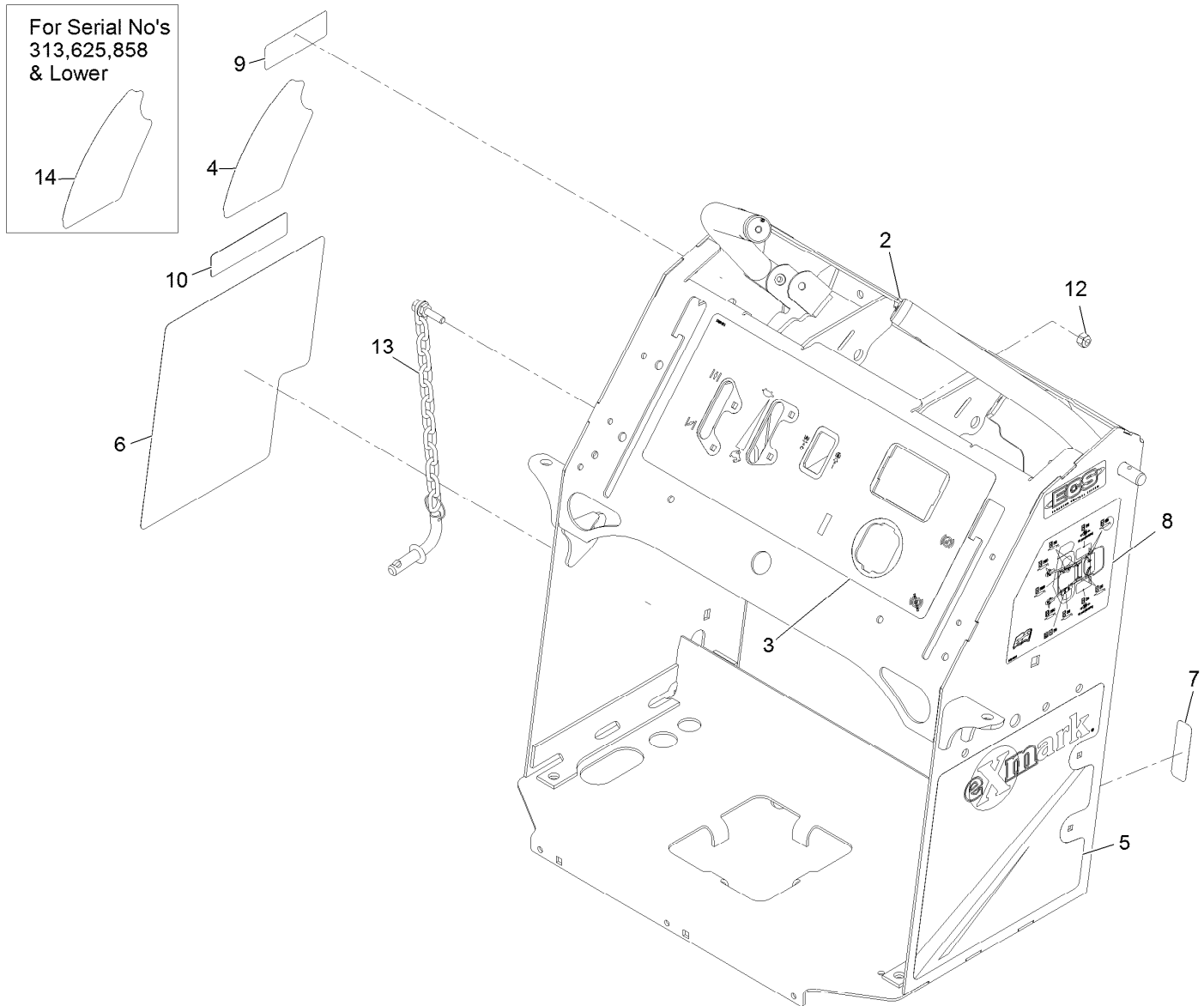
Idler Arm Assembly No. 116-3806

<i>Ref.</i>	<i>Part Number</i>	<i>Qty.</i>	<i>Description</i>
2	103-3504	2	Bearing-Spherical
3	103-3505	1	Seal-Double Lip
4	103-3506	1	Seal-Single Lip
5	106-7159	2	O-Ring
6	32120-10	2	Ring-Retaining



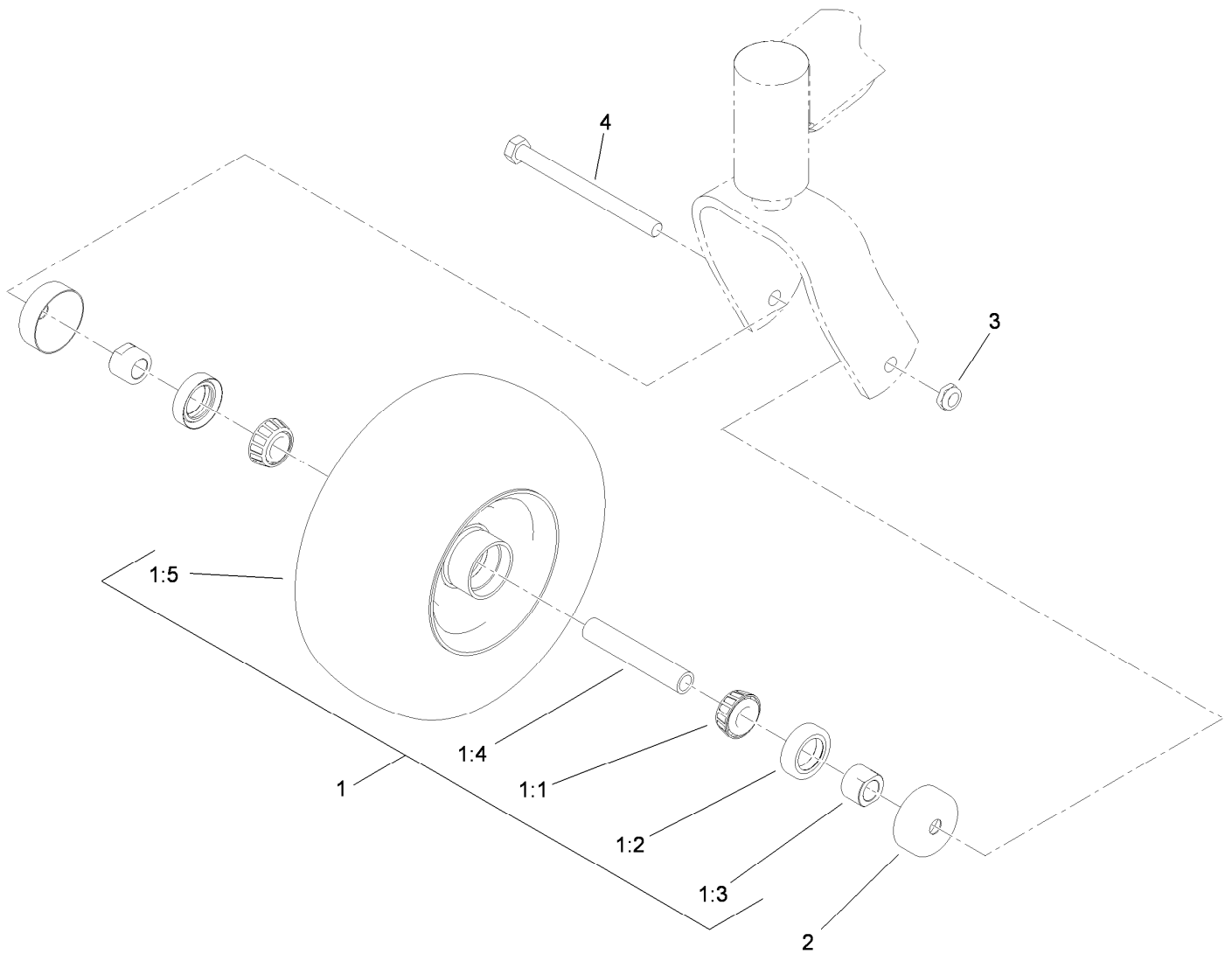
Main Frame Assembly

Ref.	Part Number	Qty.	Description	Ref.	Part Number	Qty.	Description
1	116-7045	1	Front Frame ASM	18	116-3113-01	1	Panel-Guard
1:2	302-5	4	Zerk 1/4-28 Str Thrd Forming	19	3231-31	4	Bolt-Carriage 3/8-16 X 2 1/2
1:3	1-811010	2	Plug	20	32128-21	8	Nut-3/8-16 Flanged Side Lock
1:4	1-543508	4	Cup-Bearing Tapered Roller	21	2412-87	1	Clamp-Cable
2	116-8854	1	Tower Assembly	22	321-4	2	Screw-HH 1/4-20 X 3/4
3	108-3742	8	Screw-HH Flg 3/8-16 X 2	23	104-7201	4	Nut-Nyloc 1/4-20 Flg
4	121-1760	8	Spacer	24	116-5067	1	Bracket-Hose, Fuel (Double)
5	104-8301	18	Nut-Nyloc 3/8-16 Flg	25	116-3382	2	Guide-Hose, Support
6	1-543509	4	Cone-Bearing Tapered Roller	26	116-3137	1	Decal-Vantage Logo
7	1-543511	2	Seal-Grease	31	116-6981-01	1	Shield-Heat, Tall
8	103-8618-01	2	Fork-Caster	32	32144-4	1	Screw-HWH 1/4-20 X 1/2 Taptite
9	1-633508	6	Washer-Spring Disc	33	116-6997-01	2	Guard-Hose
10	3296-51	2	Nut-Nyloc 3/4-10	34	116-8152-03	1	Tube, Guard
11	103-4882	2	Cap-Grease	35	116-3883	2	Decal-X-Series
12	112-3810	2	Wheel/Tire And Bearing ASM	36	116-8859	1	Control Pannel W/Decals
13	119-7222-03	1	RH Motor Mount ASM	37	1-807512	2	Bolt-Carriage 1/4-20 X 3/4 Short Neck
14	119-7220-03	1	LH Motor Mount ASM	38	116-7688	1	Rod, Guard
15	119-7224-03	1	Mount-Motor, Center	39	3231-28	4	Bolt-Carriage 3/8-16 X 1 1/4
16	3231-22	8	Bolt-Carriage 3/8-16 X 1	40	126-0337	2	Spacer, Up Stop
17	116-6373	1	Muffler Guard ASM	41	126-0341	2	Spacer-Up Stop
17:2	106-5517	1	Decal-Warning, Hot Surface				



Tower Assembly W/Decals No. 116-8854

Ref.	Part Number	Qty.	Description
2	103-0464	2	Pin-Spring 1/8 X 1/2
3	116-9321	1	Decal-Control Panel Ecs
4	116-2040	1	Decal-Height Of Cut
5	116-4269	1	Decal-LH Panel
6	116-1909	1	Decal-RH Panel
7	116-3267	1	Decal-Fuse
8	116-9164	1	Decal-Service Aid
9	116-9165	2	Decal-Ecs Logo
10	117-2718	1	Decal-Arrester, Spark
12	3296-42	1	Nut-Nyloc 1/4-20
13	114-0409	1	HOC Pin ASM
14	126-0332	1	Decal-Height Of Cut

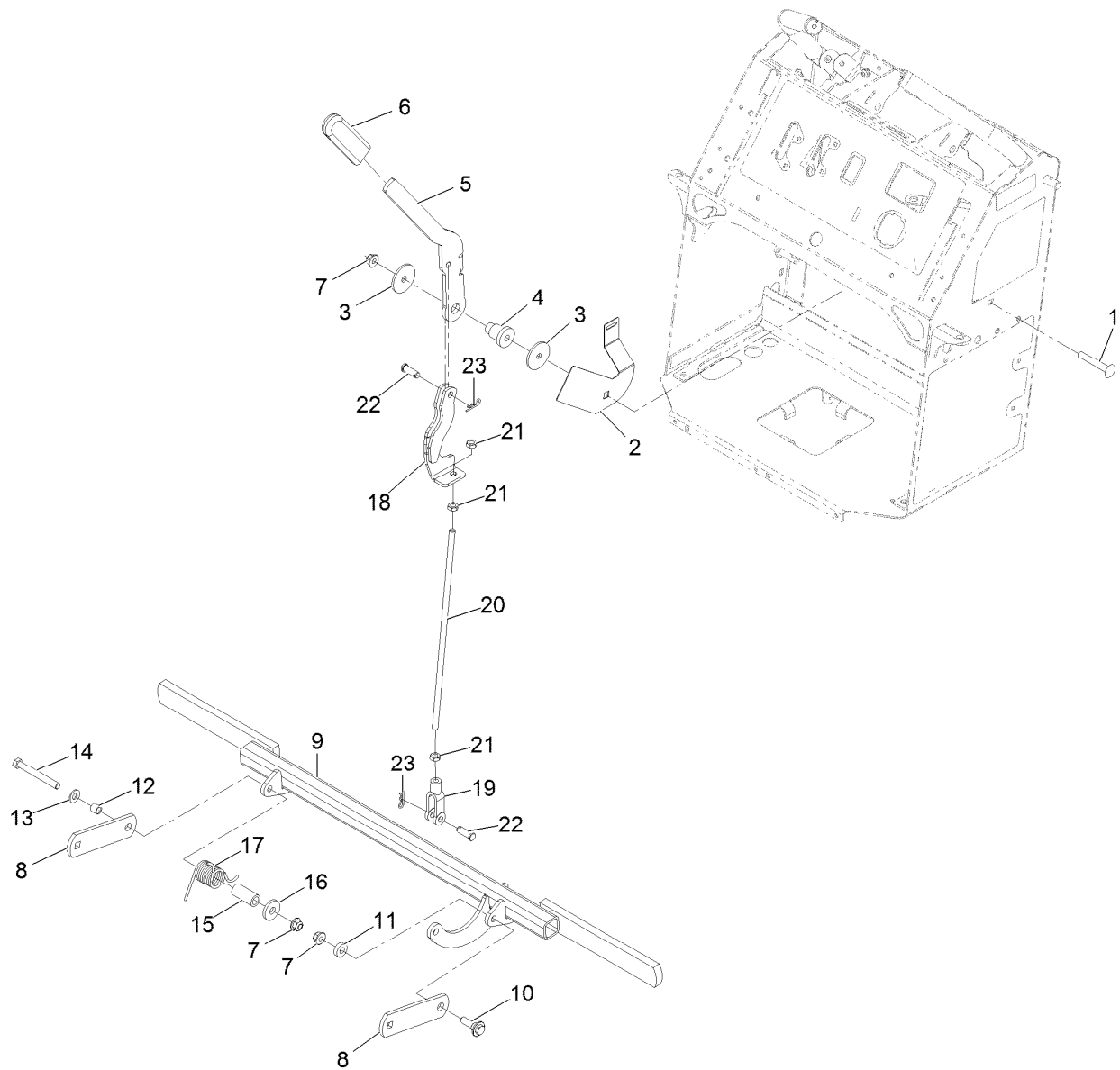


Wheel and Bearing Assembly No. 112-3810

Ref.	Part Number	Qty.	Description
1		1	Wheel And Bearing ASM ●
1:1	1-633585	2	Bearing-Cone, Taper
1:2	103-0063	2	Seal-Caster
1:3	103-3051	2	Spacer-Nut ■
1:4	103-3157	1	Axle-Caster
1:5	110-9965	1	Wheel And Tire ASM
2	103-2768	2	Guard-Seal
3	3296-45	1	Nut-Lock, NI
4	325-20	1	Screw-HH

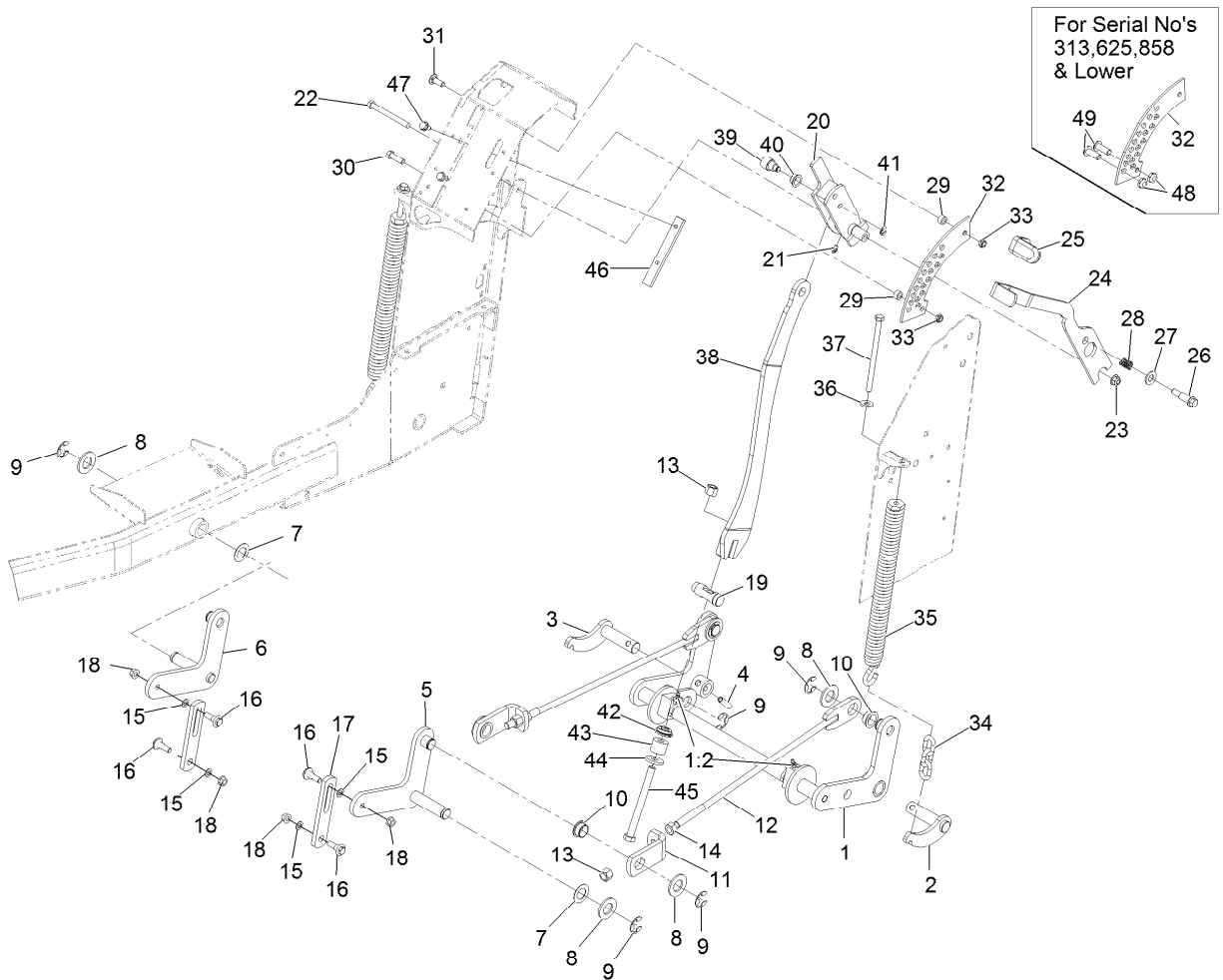
● Not serviced separately

■ Use Pro-Lock, Nut Type (P/N 1-840022, .5ml tube) on spacer nut



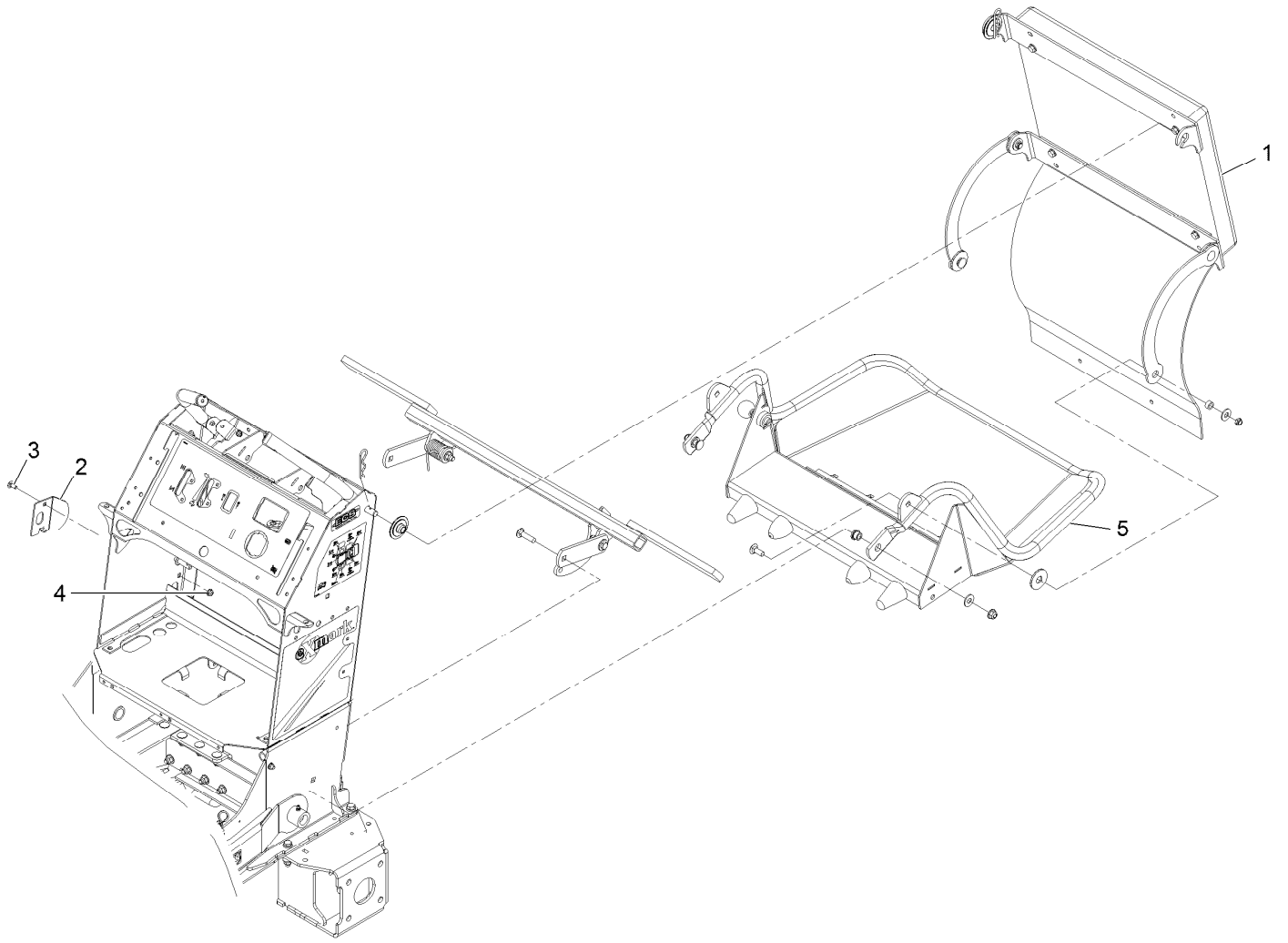
Park Brake Assembly

<i>Ref.</i>	<i>Part Number</i>	<i>Qty.</i>	<i>Description</i>	<i>Ref.</i>	<i>Part Number</i>	<i>Qty.</i>	<i>Description</i>
1	3231-44	1	Bolt-Carriage 3/8-16 X 2 1/2	12	117-9684	1	Spacer
2	117-0452-03	1	Plate-Switch, Brake	13	3256-24	1	Washer-3/8 Sae
3	63-7400	2	Washer-Rebound	14	323-20	1	Screw-HH 3/8-16 X 3-1/4
4	106-3214	1	Mount-Pulley	15	117-9683	1	Spacer
5	117-5759-03	1	Lever-Brake	16	117-9682	1	Spring-Torsion
6	1-633268	1	Grip-Lever	17	1-373034	1	Washer
7	104-8301	3	Nut-Nyloc 3/8-16 Flg	18	119-8780-03	1	Arm-Brake
8	114-5186-01	2	Support-Brake	19	1-633131	1	Yoke-Linkage, Brake
9	119-8730-03	1	Bar-Brake	20	119-7244	1	Rod-Brake
10	614672	1	Screw-Shoulder 3/8-16 X 1.295	21	3220-3	3	Nut-Jam 3/8-24
11	5-0652	1	Spacer	22	283-2	2	Pin-Clevis 3/8 X 1 1/6
				23	3290-307	2	Pin-Hair



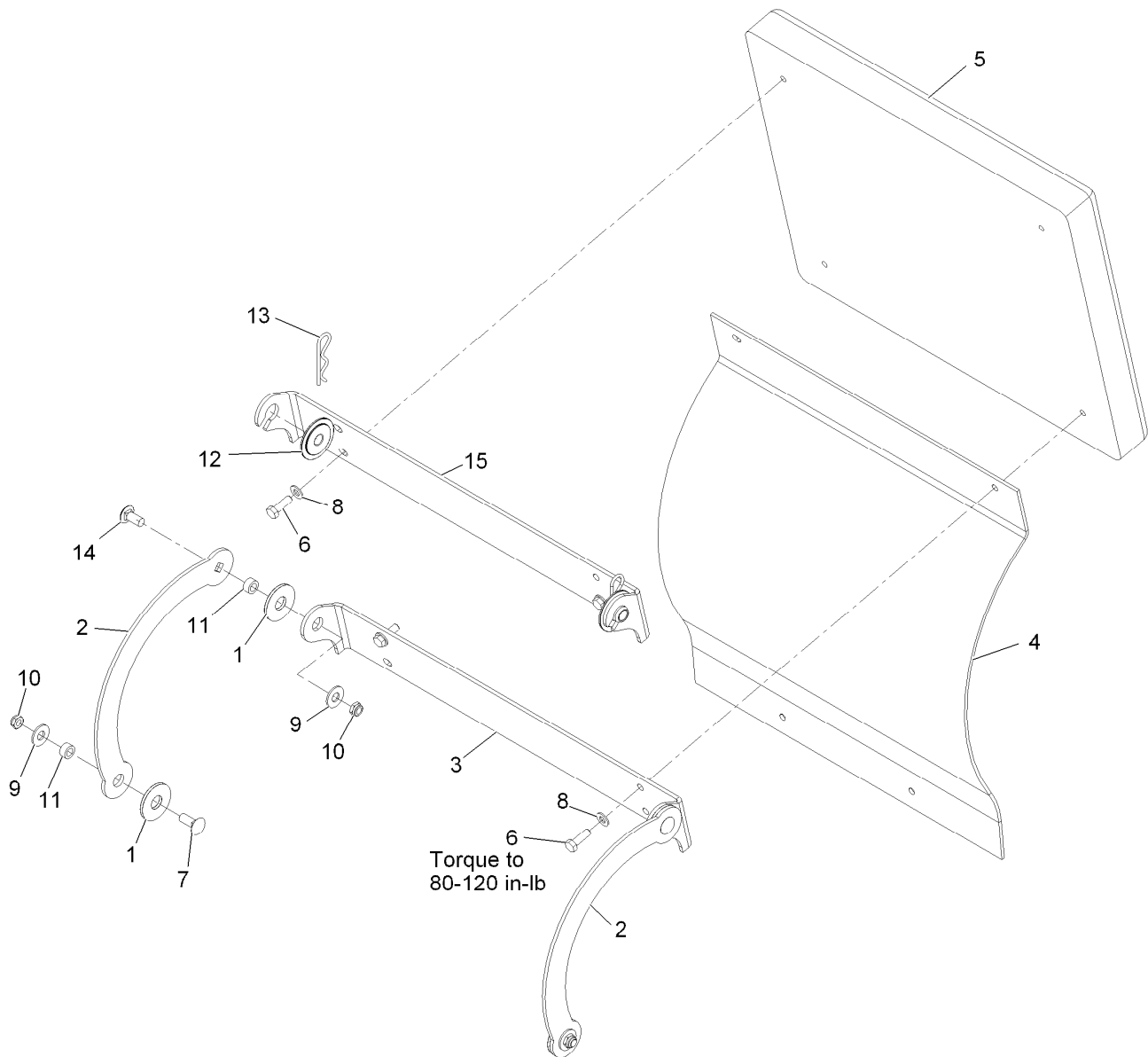
Deck Lift Assembly

Ref.	Part Number	Qty.	Description	Ref.	Part Number	Qty.	Description
1	116-3103	1	Rear Crossshaft ASM	25	1-633268	1	Grip-Lever
1:2	302-11	2	Zerk-45° 1/4-28	26	66-0561	1	Screw-Shoulder
2	116-3104-01	1	Shaft-Pivot, LH	27	3256-26	1	Washer-1/2 Sae
3	116-3105-01	1	Shaft-Pivot, RH	28	65-9940	1	Spring
4	116-3107	2	Pin-Spiral	29	111044	2	Bushing
5	121-5993-01	1	Arm-Lift, LH	30	323-7	1	Screw-HH 3/8-16 X 1 1/4
6	121-5994-01	1	Arm-Lift, RH	31	3231-22	1	Bolt-Carriage 3/8-16 X 1
7	110-6767	2	Washer-Thrust	32	114-5307	1	Bracket-HOC
8	3256-29	6	Washer-7/8 Sae	33	3296-59	2	Nut-Nyloc 3/8-16 Thin
9	32151-103	7	E-Ring	34	103-9859	2	Chain-Decklift
10	116-2909	4	Bearing-Flange	35	116-0886	2	Extension Spring ASM
11	116-6035	2	Bracket-Lift Rod	36	98-5975	2	Washer-Spring Disc 3/8
12	116-8676	2	Lift Rod ASM	37	323-58	2	Bolt-HH 3/8-16 X 6 Tap
13	3296-23	3	Nut-Nyloc 1/2-13	38	116-2939	1	Bar-Lift
14	3217-9	2	Nut-Hex 1/2-13	39	116-3048	1	Hub-Pivot
15	40-1940	4	Washer	40	116-3047	1	Bearing-Flange
16	109-9840	4	Screw-Hex Flange 3/8-16 X .80	41	32151-47	1	Ring-Retaining
17	117-0519	2	Link-Lift	42	116-3625	1	Seat-Spring
18	32128-21	4	Nut-3/8-16 Flanged Side Lock	43	116-3241	1	Spring-Urethane
19	114-5274	1	Pin-HOC	44	92-2651	1	Washer
20	114-3512	1	HOC Handle ASM	45	325-22	1	Screw-HH 1/2-13 X 5 1/2
21	302-5	1	Zerk 1/4-28 Str Thrd Forming	46	116-3124	1	Skid-Handle, Lift
22	323-42	1	Screw-HH 3/8-16 X 3 3/4	47	32144-70	2	Screw-HWH 5/16-18 X 3/4 Tf
23	104-8301	1	Nut-Nyloc 3/8-16 Flg	48	3296-59	2	Nut-Nyloc 3/8-16 Thin
24	114-1878-03	1	Lever-HOC	49	3274-94	2	Screw-Button Head 3/8-16 X 1



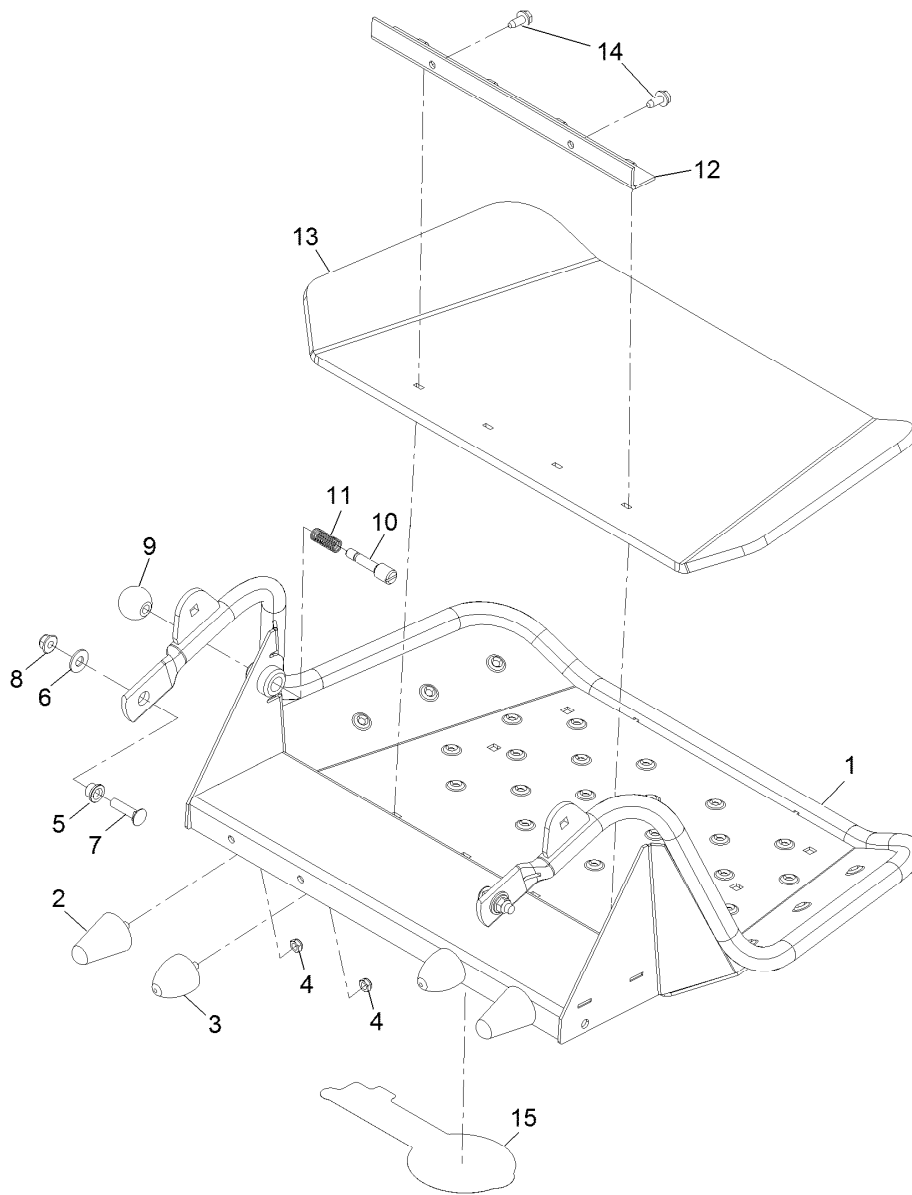
Platform Group

<i>Ref.</i>	<i>Part Number</i>	<i>Qty.</i>	<i>Description</i>
1	116-1803	1	Cushion ASM
2	119-7312	1	Plate-Striker
3	3229-11	1	Bolt-Carriage 1/4-20 X 5/8
4	104-7201	1	Nut-Nyloc 1/4-20 Flg
5	116-1804	1	ASM,Platform



Cushion Assembly No. 116-1803

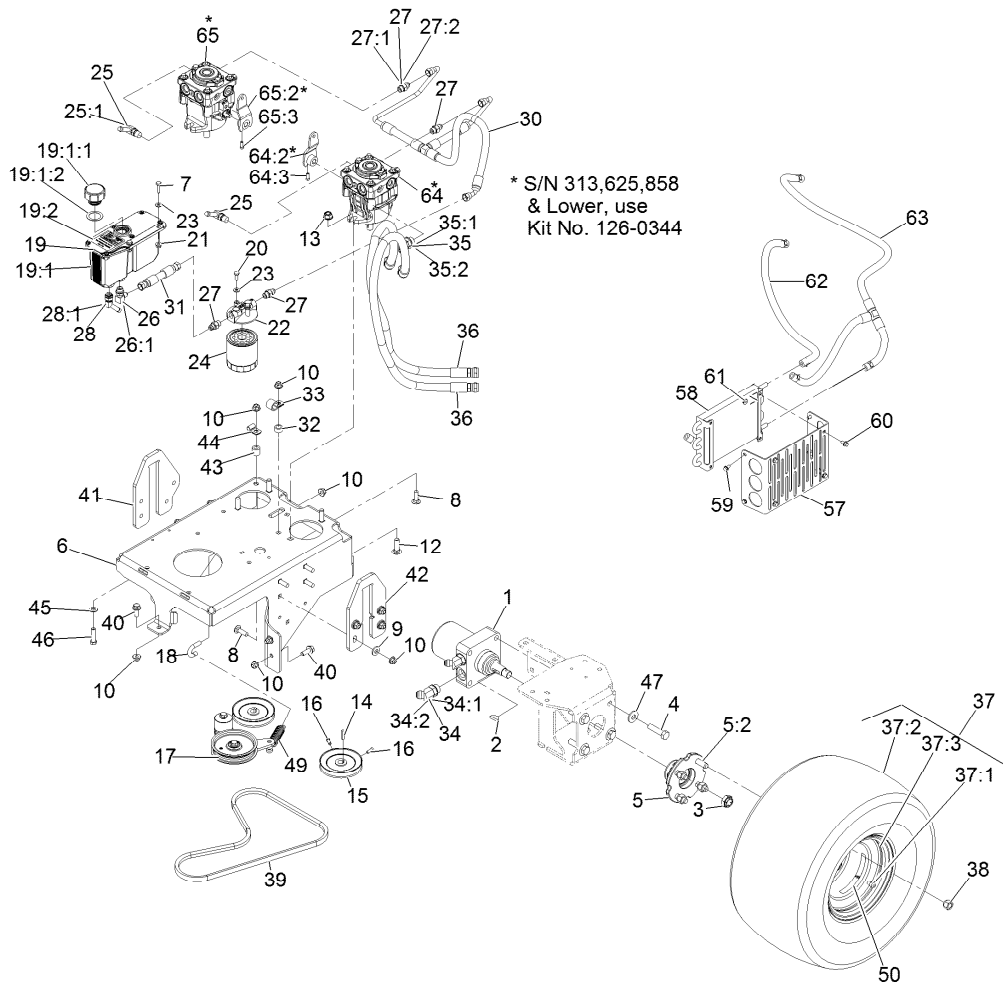
Ref.	Part Number	Qty.	Description
1	114-0463	4	Washer-Friction, Composite
2	114-1915-03	2	Link-Pad
3	116-2061-03	1	Hinge-Pad
4	116-3406	1	Shield-Rear
5	116-1790	1	Pad,Grey Cushion
6	116-0648	4	Screw-HH 5/16-18 X 1 W/Patch
7	3231-2	2	Bolt-Carriage 3/8-16 X 1
8	3256-23	4	Washer-5/16 Sae
9	3256-4	4	Washer-3/8 Std
10	3296-59	4	Nut-Nyloc 3/8-16 Thin
11	111044	4	Bushing
12	116-2886	2	Slide-Bushing
13	3290-355	2	Pin-Hair
14	3231-27	2	Bolt-Carriage 3/8-16 X 7/8
15	116-2757-03	1	Hinge-Pad



Platform Assembly No. 116-1804

Ref.	Part Number	Qty.	Description
1	117-9641-03	1	Platform ASM
2	114-1925	2	Bumper-Rubber
3	114-1926	2	Bumper-Rubber
4	3296-47	4	Nut-Nyloc 5/16-18 Thin
5	109-8788	2	Bushing-Flanged
6	3256-4	2	Washer-3/8 Std
7	3231-4	2	Bolt-Carriage 3/8-16 X 1 1/2
8	104-8301	2	Nut-Nyloc 3/8-16 Flg
9	1-603175	1	Knob-Ball
10	119-8650	1	Pin-Latch ●
11	114-5348	1	Spring
12	114-1920-03	1	Clamp-Shield
13	114-5349	1	Mat-Foot
14	32144-70	2	Screw-HWH 5/16-18 X 3/4 Tf
15	1-653546	1	Decal, Exmark

● Use Pro-Lock, Nut Type (P/N 1-840022, .5ml tube) on threads.



Ground Drive Assembly

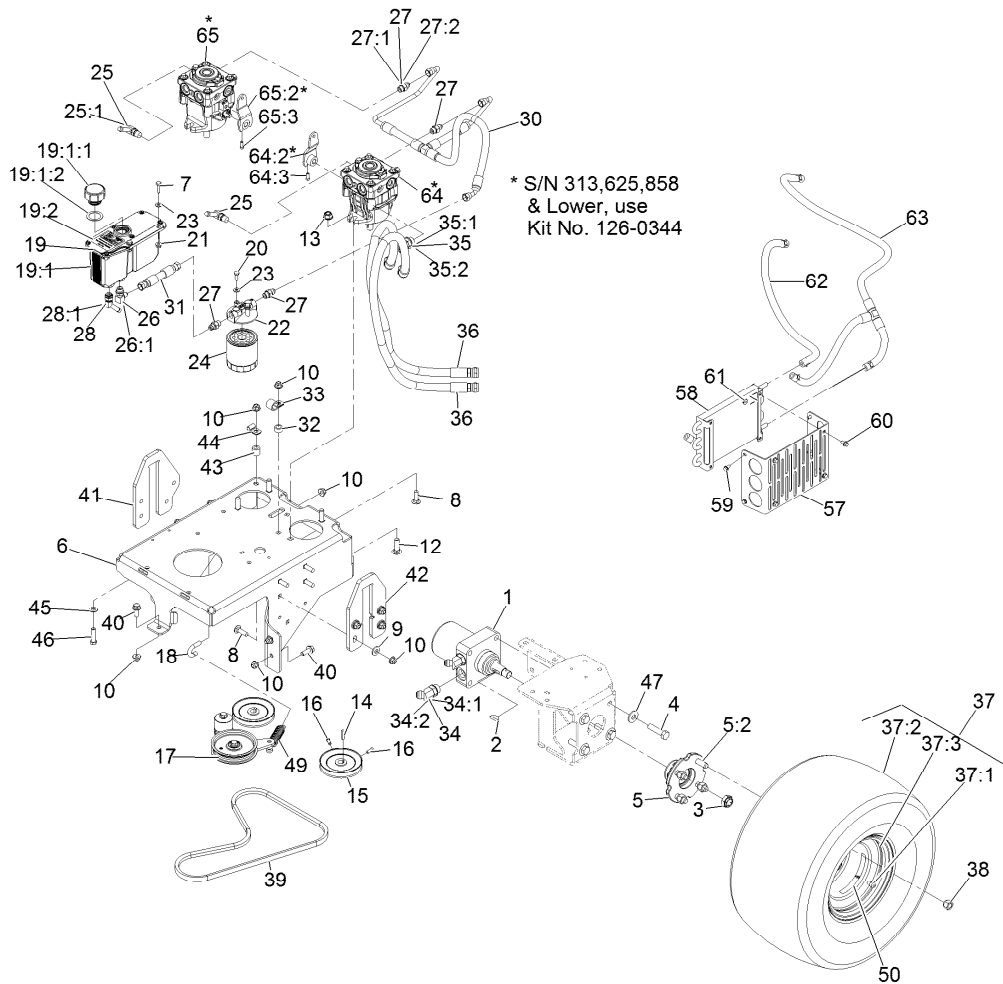
Ref.	Part Number	Qty.	Description	Ref.	Part Number	Qty.	Description
1	116-9109	2	Motor, Wheel Te230	19:2	116-0404	1	Decal-Hydraulic Tank
2	3257-8	2	Key-Woodruff	20	321-4	2	Screw-HH 1/4-20 X 3/4
3	116-2839	2	Nut-Lock	21	32128-32	2	Nut-Hex 1/4-20 Side Lock
4	325-8	8	Screw-HH	22	104-7836	1	Filter-Head
5	105-0800	2	Wheel Hub ASM	23	3256-22	4	Washer-1/4 Sae
5:2	10-6830	4	Stud-Type, Drive	24	109-4180	1	Element, Oil Filter
6	116-7796-01	1	Weldment, Frame	25	100-4887	2	Fitting-Barbed, 90 DEG
7	321-6	2	Screw-HH 1/4-20 X 1	25:1	237-42	1	O-Ring
8	3231-25	9	Bolt-Carriage 3/8-16 X 1 1/4	26	103-1802	1	Fitting-HYD, 90 DEG
9	98-5975	8	Washer-Spring Disc 3/8	26:1	1-603921	1	O-Ring-Sae #6
10	104-8301	16	Nut-Nyloc 3/8-16 Flg	27	103-2156	4	Adapter-Straight
12	3232-3	4	Bolt-Carriage 7/16-14 X 1 1/2	27:1	1-603921	1	O-Ring-Sae #6
13	114-8417	4	Nut-HF, NI	27:2	103-1020	1	O-Ring-37 Flare #6
14	1-807272	2	Key-5Mm X 5Mm X 25Mm	28	103-1807	1	Fitting-Barbed, 45 DEG
15	105-5648	2	Pulley-Pump ■	28:1	237-42	1	O-Ring
16	3241-5	4	Setscrew-SQH 1/4-20 X 5/8	30	116-2650	1	Hose Assembly - Charge
17	116-7600	1	Pump Idler ASM	31	116-2604	1	HYD Hose ASM
18	116-8526	1	Anchor, Spring	32	1-653069	1	Spacer-Wheel
19	116-2066	1	ASM,Reservoir W/Decals ▲	33	1-633396	1	Clip-Loom 5/8
19:1		1	Reservoir-HYD ●	34	1-523222	4	Fitting-HYD, 45 DEG
19:1:1	103-1948	1	Cap-Reservoir, HYD	34:1	1-603919	1	O-Ring-Sae #10
19:1:2	103-1949	1	Gasket-Cap	34:2	1-603992	1	O-Ring-37 Flare #8
				35	1-523221	4	Fitting-HYD, 45 DEG
				35:1	1-603920	1	O-Ring-Sae #8

● Not serviced separately

▲ Use Exmark Premium Hydro Oil P/N 109-9828 (32oz)

◆ Use Pro-Lock, Nut Type (P/N 1-840022, .5ml tube) on threads.

■ Apply anti-seize compound in bore.



Ground Drive Assembly (continued)

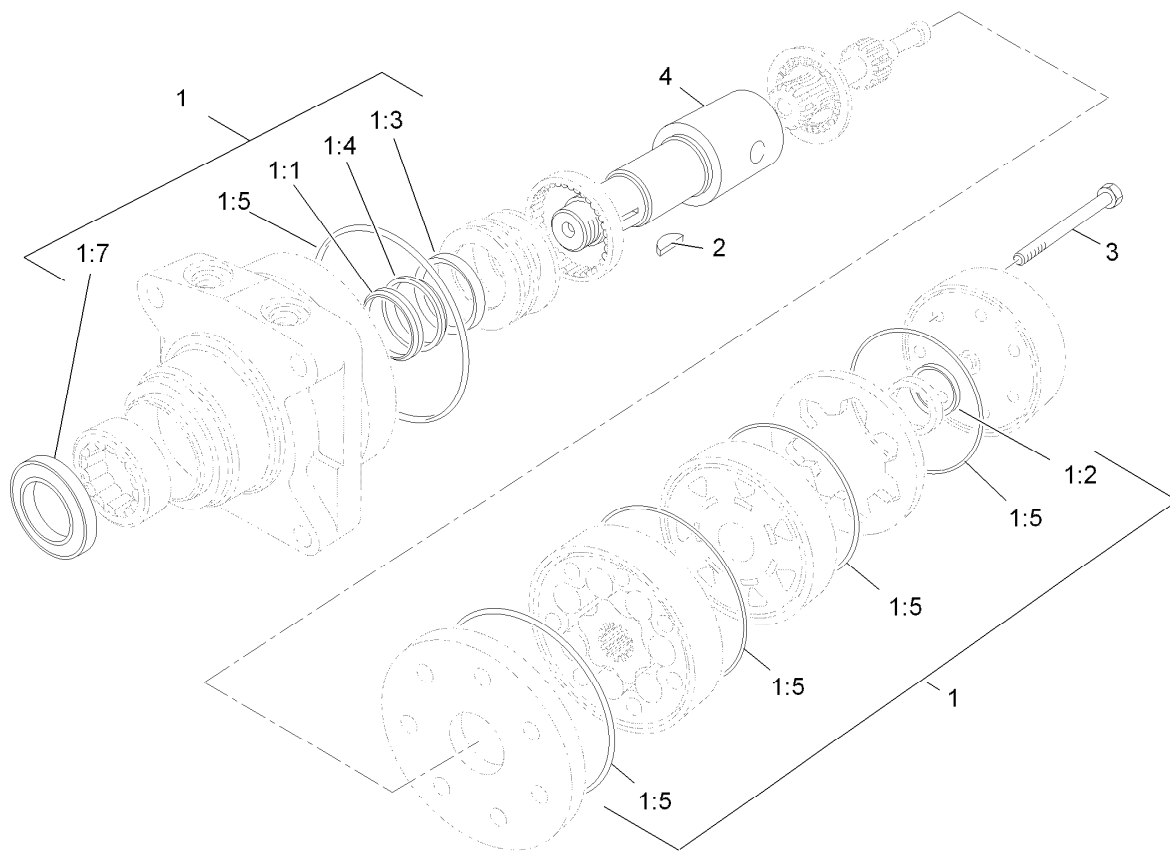
Ref.	Part Number	Qty.	Description	Ref.	Part Number	Qty.	Description
35:2	1-603992	1	O-Ring-37 Flare #8	49	108-4056	1	Spring-Extension
36	116-6902	4	HYD Hose ASM	50	116-4181	2	Decal-Wheel Hub
37	120-6465	2	Wheel/Tire ASM	57	116-7497-01	1	Bracket, Cooler Mounting
37:1	116-4605	1	Rim-8 Inch	58	116-7274	1	Cooler-Oil
37:2	120-6466	1	Tire	59	32144-4	4	Screw-HWH 1/4-20 X 1/2 Taptite
37:3	232-27	1	Stem-Valve	60	3234-13	4	Screw-HHF
38	242-50	8	Nut-Lug 1/2-20	61	32149-2	4	Nut-Keps
39	114567	1	Belt-V	62	116-8839	1	Hose, Hydraulic Assy
40	3234-42	5	Screw HHH 3/8-16 X 1	63	116-7613	1	Hose ASM-HYD LP 3/8
41	116-4922	1	Plate-Lift, RH	64	116-8846	1	Pump W/Arm - Left
42	116-3546	1	Plate, Lift LH	64:2	126-0334	1	Arm-Hydro
43	121-1760	1	Spacer	64:3	3241-5	1	Screw-Set
44	116-3362	1	Clip-Tube	65	116-8847	1	Pump W/Arm -Right
45	3256-24	1	Washer-3/8 Sae	65:2	126-0334	1	Arm-Hydro
46	323-8	1	Screw-HH 3/8-16 X 1 1/2	65:3	3241-5	1	Screw-Set
47	1-513435	8	Washer-Spring Disc 1/2				

● Not serviced separately

▲ Use Exmark Premium Hydro Oil P/N 109-9828 (32oz)

◆ Use Pro-Lock, Nut Type (P/N 1-840022, .5ml tube) on threads.

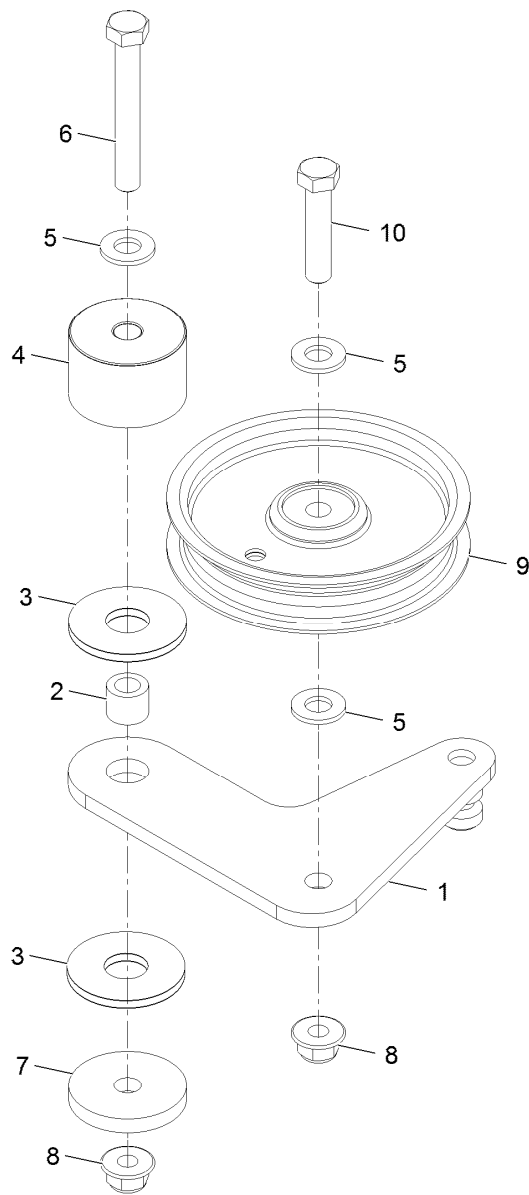
■ Apply anti-seize compound in bore.



Wheel Motor Assembly No. 116-9109

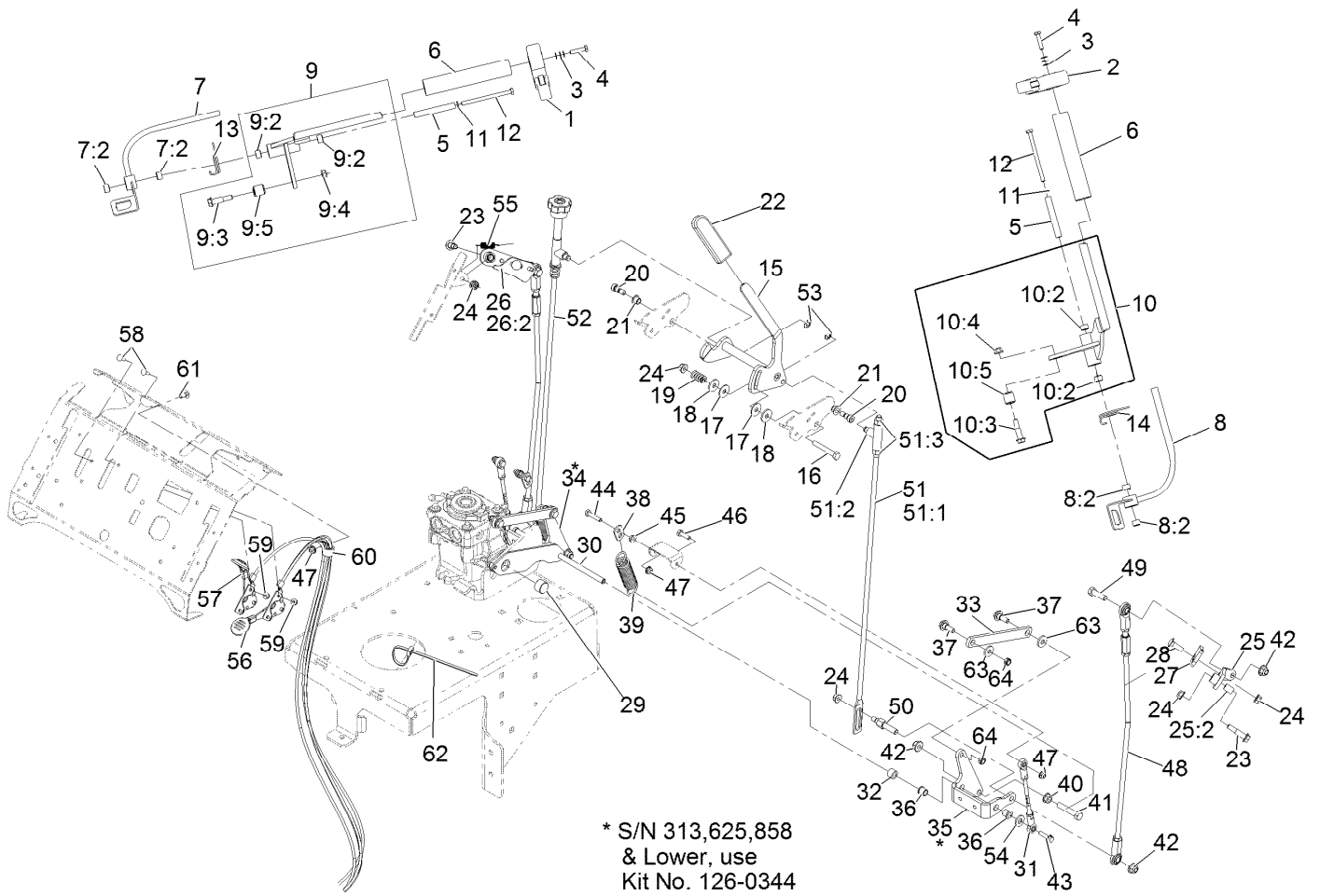
Ref.	Part Number	Qty.	Description
1	1-000119	1	Seal Kit
1:1		1	Ring-Back Up ●
1:2		1	Seal-Commutator ●
1:3		1	Seal-Shaft (Viton) ●
1:4		1	Washer-Back Up, Steel ●
1:5		5	Ring-Seal (Viton) ●
1:7		1	Seal-Dirt And Water ●
2	3257-8	1	Key-Woodruff
3	106-5549	6	Bolt-Special
4	106-8764	1	Shaft-Coupling

● Not serviced separately



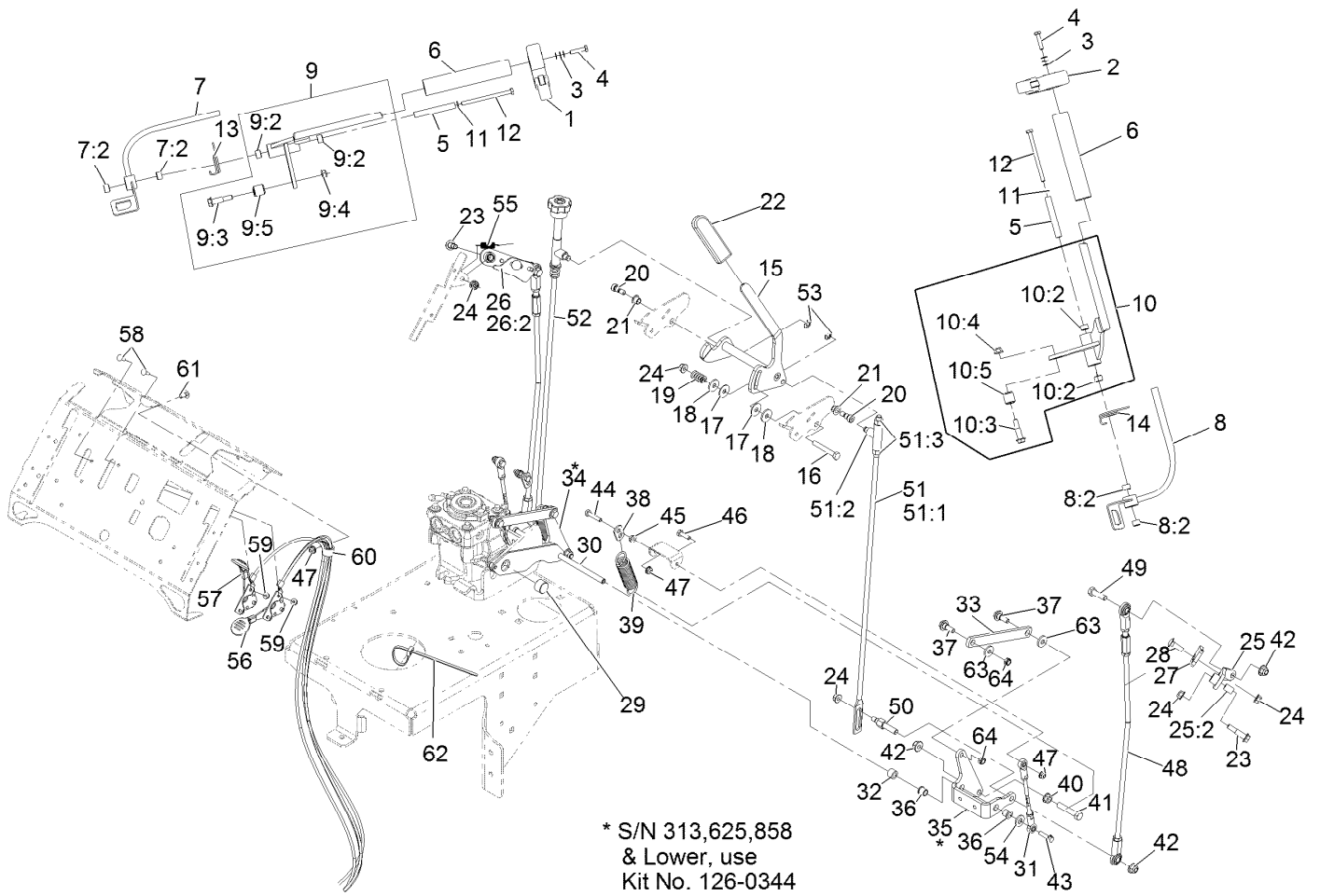
Pump Idler Assembly No. 117-7685

<i>Ref.</i>	<i>Part Number</i>	<i>Qty.</i>	<i>Description</i>
1	117-7684	1	Plate-Idler
2	1-413088	1	Spacer
3	114-0463	2	Washer-Friction, Composite
4	116-7599	1	Hub, Idler
5	3256-24	3	Washer-3/8 Sae
6	323-13	1	Screw-HH 3/8-16 X 2 3/4
7	110-9981	1	Washer-Plain
8	104-8301	2	Nut-Nyloc 3/8-16 Flg
9	93-1622	1	Pulley-Idler
10	323-9	1	Screw-HH 3/8-16 X 1 3/4



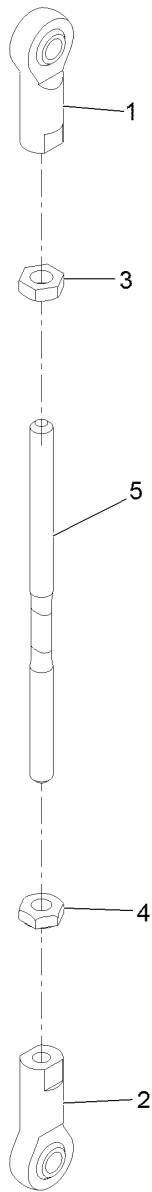
Controls Assembly

Ref.	Part Number	Qty.	Description	Ref.	Part Number	Qty.	Description
1	103-1371	1	Thumb Latch Asm RH	11	3253-3	2	Washer-Lock 1/4
2	103-1372	1	Thumb Latch Asm LH	12	321-28	2	Screw-HH
3	1-303435	6	Washer-Spring Disc 1/4	13	116-7774	1	Spring, Torsion
4	103-0235	2	Screw-HH 1/4-20 X 1 1/8 W/Nylon	14	116-7768	1	Spring, Torsion
5	116-7725	2	Tube	15	126-0302	1	Speed Control ASM
6	103-0815	2	Grip-Bar, Handle	16	322-11	1	Screw-HH 5/16-18 X 2 1/4
7	116-7902	1	Opc-W/Bushing, RH	17	1-323244	2	Washer-Friction
7:2	1-413152	2	Bushing-Sleeve	18	1-603716	2	Washer-Friction Disc
8	116-7903	1	Opc-W/Bushing, LH	19	1-323245	1	Spring-Compression
8:2	1-413152	2	Bushing-Sleeve	20	1-809056	2	Screw-Sh 5/16-18 X 1 3/8
9	116-7766	1	ASM, Control-RH	21	116-8615	2	Bushing
9:2	1-413152	2	Bushing-Sleeve	22	103-5994	1	Grip, Steering Handle
9:3	116-8607	1	Screw-Shoulder	23	116-8607	2	Screw-Shoulder
9:4	104-8300	1	Nut-Nyloc 5/16-18 Flg	24	104-8300	7	Nut-Nyloc 5/16-18 Flg
9:5	116-8627	1	ASM, Roller	25	116-8821	1	Arm ASM-Left
10	116-7767	1	ASM, Control	25:2	116-8610	1	Sleeve-Bearing
10:2	1-413152	2	Bushing-Sleeve	26	116-8824	1	Arm ASM -Right
10:3	116-8607	1	Screw-Shoulder	26:2	116-8610	1	Sleeve-Bearing
10:4	104-8300	1	Nut-Nyloc 5/16-18 Flg	27	116-9935	2	Ramp
10:5	116-8627	1	ASM, Roller	28	3230-2	2	Bolt-Carriage 5/16-18 X 1
				29	116-4203	1	Pin-Bellcrank Link Retaining



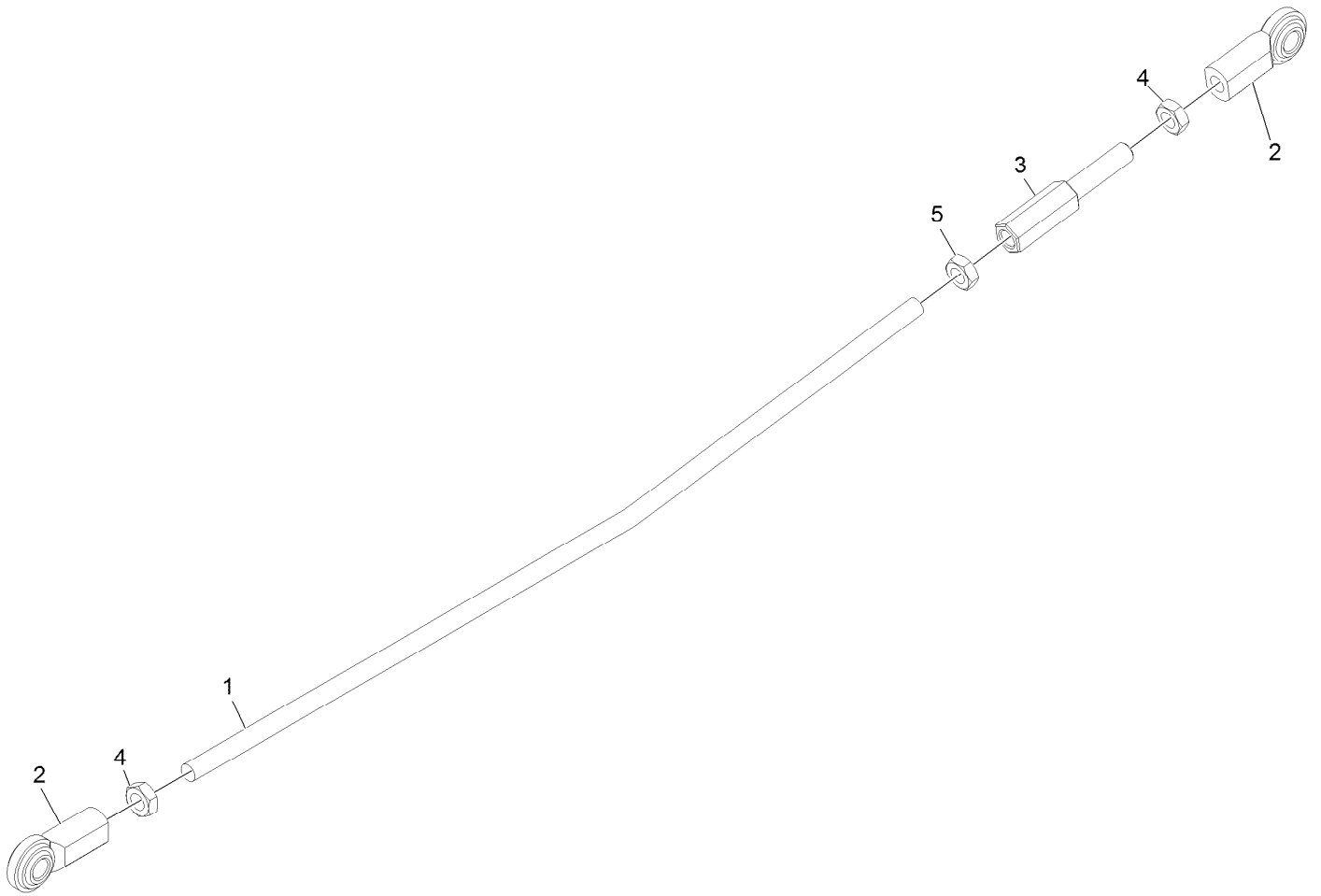
Controls Assembly (continued)

Ref.	Part Number	Qty.	Description	Ref.	Part Number	Qty.	Description
30	116-8563	1	Bellcrank Link ASM	49	323-7	2	Screw-HH 3/8-16 X 1 1/4
31	116-7738	2	ASM, Link	50	116-9167	2	Stud-Control, Speed
32	52-2480	2	Spacer-Wheel	51	116-8679	1	ASM, Rod Left
33	116-4208	2	Link-Bellcrank, Pump	51:1	116-9938	1	Rod, Left
34	126-0335	1	Bellcrank-Lower, Rt	51:2	116-8683	1	Swivel
35	126-0336	1	Bellcrank-Lower, Lt	51:3	3219-3	2	Nut-Hex 3/8-24
36	103-9928	4	Bearing	52	116-8681	1	ASM, Rod Right
37	116-2670	4	Screw-Shoulder HHF 5/16-18 X .96	53	32151-47	2	Ring-Retaining
38	116-9940	2	Anchor, Spring	54	66-2920	2	Washer-Friction
39	1-603402	2	Spring-Extension	55	114-0249	2	Spring-Extension
40	3290-357	2	Nut-Whizlock 3/8-16	56	116-4276	1	Control-Throttle
41	323-10	2	Screw-HH 3/8-16 X 2	57	116-4277	1	Control-Choke
42	104-8301	6	Nut-Nyloc 3/8-16 Flg	58	1-807533	4	Bolt-Carriage #10-24 X 5/8
43	120-4654	2	Screw-HHF	59	32128-17	4	Nut-Flange #10-24 Top Lock
44	321-8	2	Screw-HH 1/4-20 X 1 1/4	60	2412-87	1	Clamp-Cable
45	32128-33	2	Nut-Whizlock 1/4-20	61	3229-11	1	Bolt-Carriage 1/4-20 X 5/8
46	321-5	2	Screw-HH 1/4-20 X 7/8	62	3290-378	1	Tie-Cable
47	104-7201	5	Nut-Nyloc 1/4-20 Flg	63	4-2390	4	Washer-Flat
48	116-7756	2	ASM, Rod	64	3296-47	4	Nut-Nyloc 5/16-18 Thin



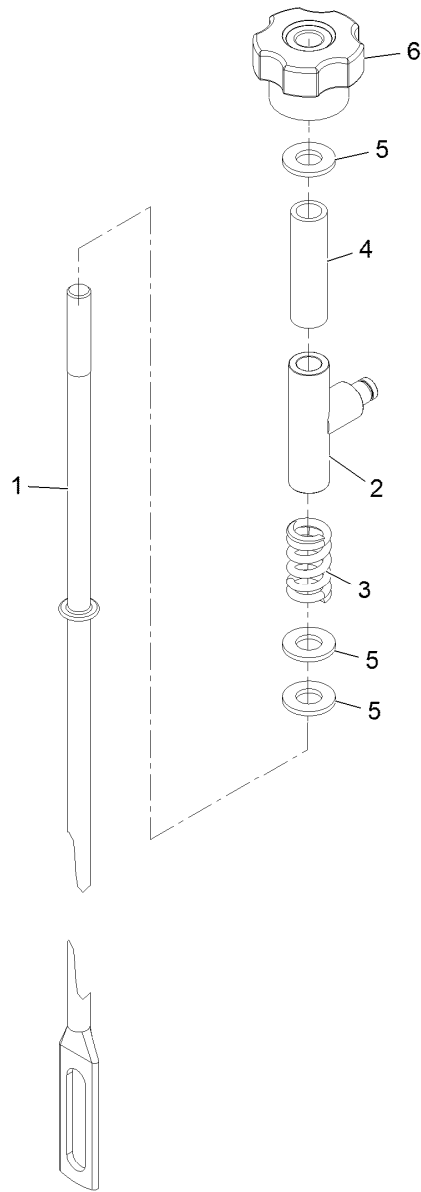
Vertical Adjust Link Assembly No. 116-7738

<i>Ref.</i>	<i>Part Number</i>	<i>Qty.</i>	<i>Description</i>
1	2411-41	1	Rod End-Ball Joint
2	104-4013	1	Joint-Ball, LH
3	3220-1	1	Nut-Jam 1/4-28
4	104-3941	1	Nut-Jam
5	116-7737	1	Rod



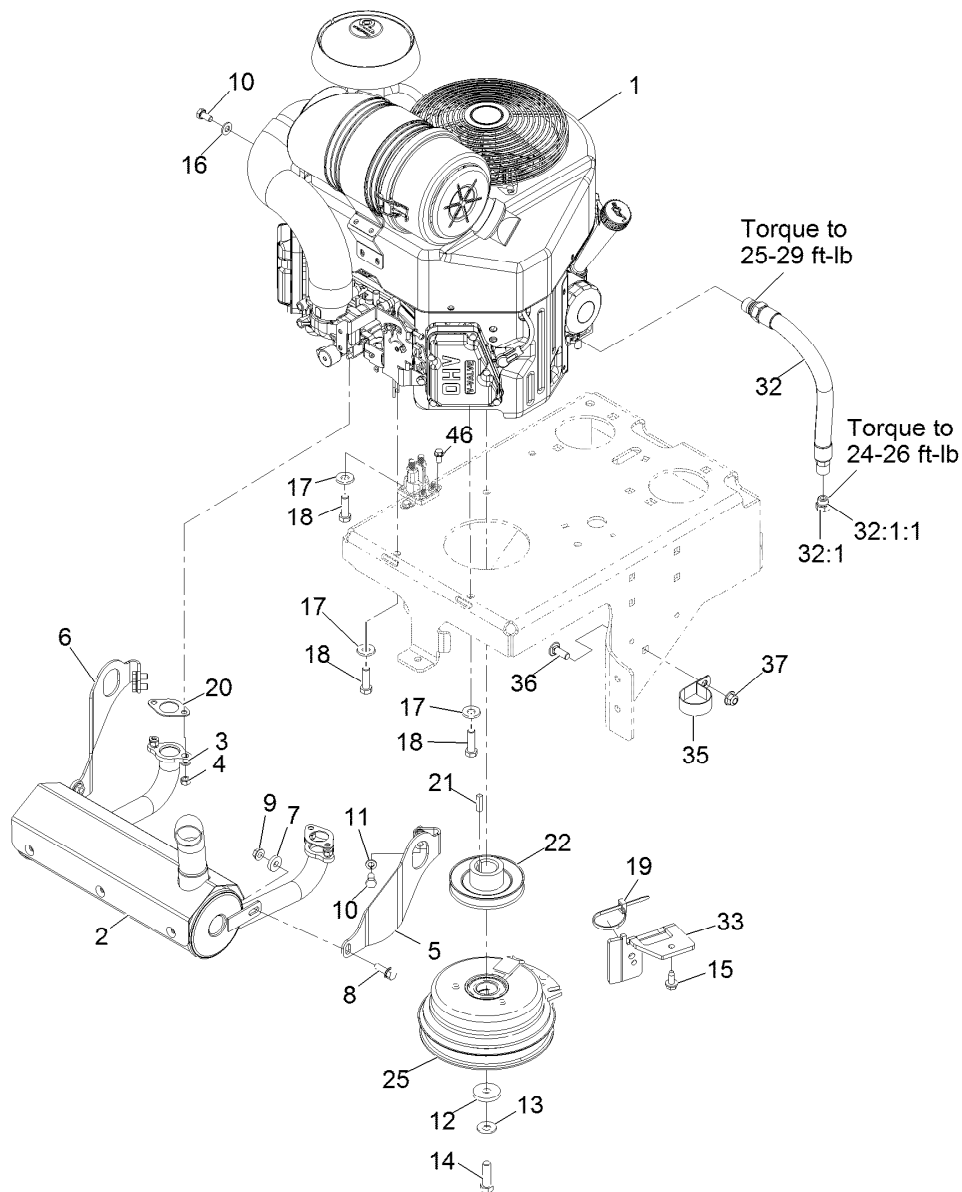
Rod Assembly No. 116-7756

<i>Ref.</i>	<i>Part Number</i>	<i>Qty.</i>	<i>Description</i>
1	116-9937	1	Link-Lower, Motion Control
2	103-0608	2	Balljoint
3	116-4755	1	Rod-Adjustment
4	3220-3	2	Nut-Jam 3/8-24
5	3220-16	1	Nut-Jam 3/8-24 LH



Rod Assembly No. 116-8681

<i>Ref.</i>	<i>Part Number</i>	<i>Qty.</i>	<i>Description</i>
1	116-9939	1	Rod, Right
2	116-8683	1	Swivel
3	116-7560	1	Spring-Compression
4	116-8684	1	Spacer
5	3256-24	3	Washer-3/8 Sae
6	116-9172	1	Knob



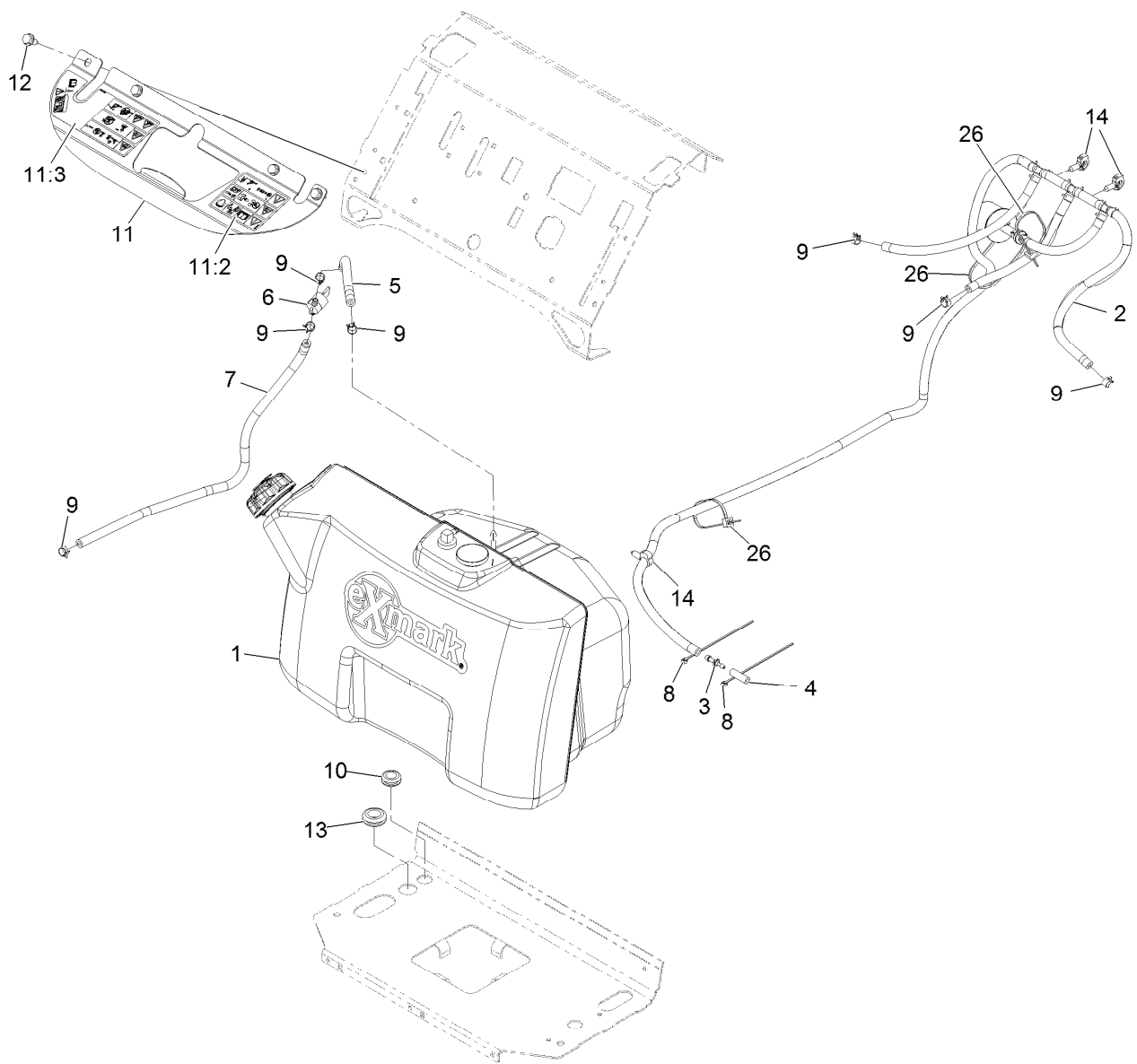
Engine Assembly

Ref.	Part Number	Qty.	Description	Ref.	Part Number	Qty.	Description
1		1	Engine-Kawasaki, Fx691 ●■	17	98-5975	3	Washer-Belleville
2	116-8747	1	Muffler, Kawasaki, 22-26	18	323-7	4	Screw-HH
3	114-3550	4	Washer-Lock, Spring	19	3290-378	1	Tie-Cable
4	114-3549	4	Nut	20	1-653313	2	Gasket-Exhaust
5	116-2353	1	Bracket-Muffler Mount, LH	21	1-807259	1	Key
6	116-2354	1	Bracket-Muffler Mount, RH	22	116-3882	1	Pulley
7	104-7658	2	Spacer	25	116-8517	1	Clutch-200 Ft-Lb, 1.125 Bore - No D Driv
8	3234-29	2	Screw-HHF	32	116-4924	1	Engine Oil Drain Hose ASM
9	32128-25	2	Nut-HF	32:1	353-508	1	Plug-HH
10	33114-016	5	Screw-HH	32:1:1	237-42	1	O-Ring
11	3253-4	4	Washer-Lock	33	116-3811-01	1	Bracket-Anchor, Clutch
12	107-4136	1	Washer	35	2412-147	1	Clamp
13	1-603610	1	Washer-Spring	36	3231-22	1	Screw-CARR
14	3212-6	1	Screw-HH ▲	37	104-8301	1	Nut-Flange, NI
15	32144-70	1	Screw-HWHTF	46	32144-4	2	Screw-HWH
16	33094-00	1	Washer-Plain				

● Not serviced separately

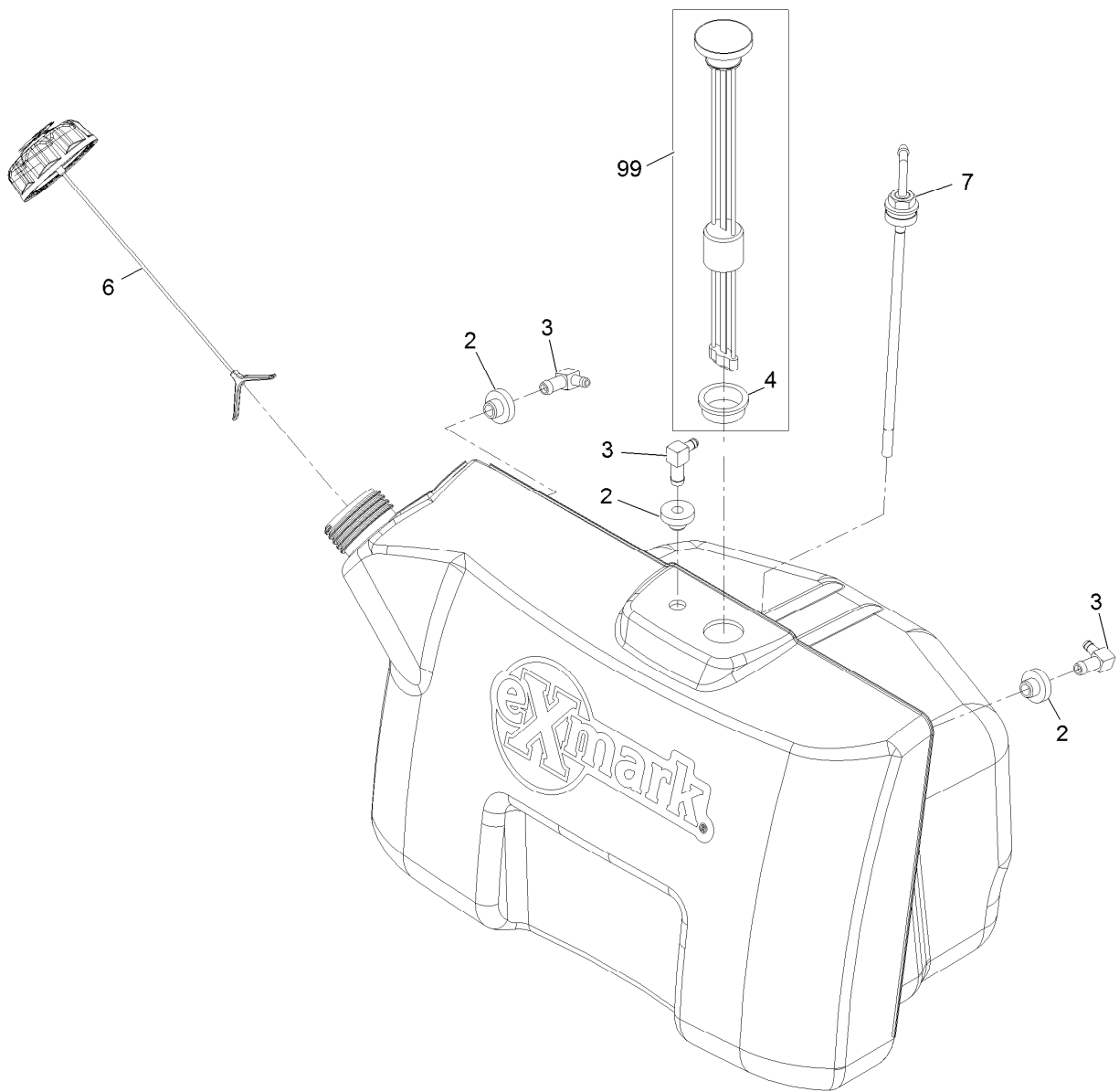
▲ Use Pro-Lock, Nut Type (P/N 1-840022, .5ml tube) on threads.

■ Obtain parts from www.kawpowerpc.com



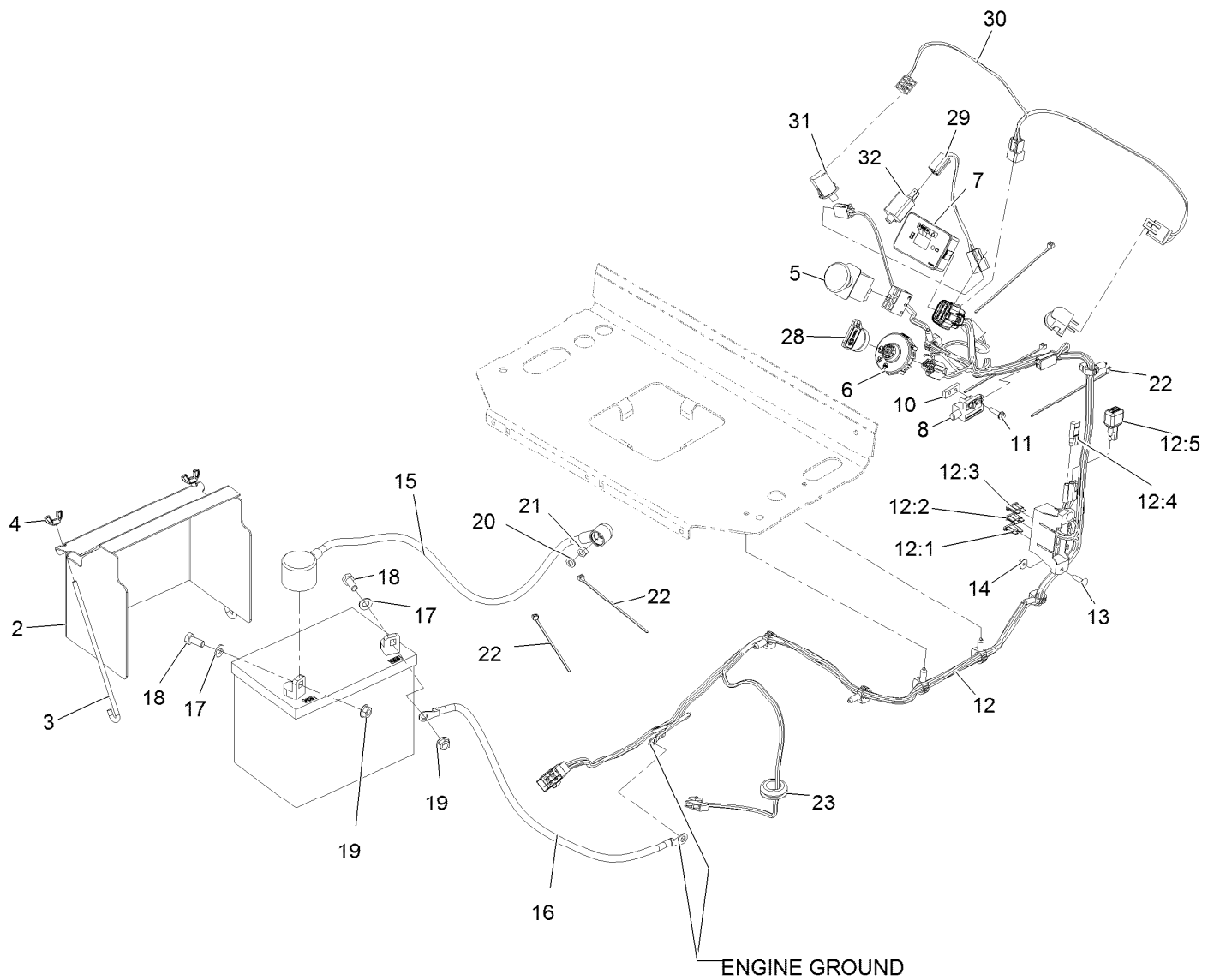
Fuel Assembly

Ref.	Part Number	Qty.	Description	Ref.	Part Number	Qty.	Description
1	116-4577	1	Tank ASM- Exmark	10	112-7069	1	Grommet
2	116-5096	1	Vent ASM	11	116-9193	1	Bracket-Tank
3	116-5072	1	Fitting-Straight	11:2	116-9143	1	Decal-Warning LH
4	115-3392	1	Hose	11:3	116-9144	1	Decal-Warning RH
5	107-9297	1	Hose-Fuel	12	32144-70	4	Screw-HWH 5/16-18 X 3/4 Tf
6	1-603770	1	Valve-Fuel	13	117-2781	1	Grommet
7	109-0301	1	Hose-Fuel	14	32180-040	3	Clip-Harness
8	1-303287	2	Tie-Cable 5 1/2 (Small)	26	3290-378	3	Tie-Cable
9	2412-98	7	Clamp-Hose				



Fuel Tank Assembly No. 116-4577

<i>Ref.</i>	<i>Part Number</i>	<i>Qty.</i>	<i>Description</i>
2	46-6560	3	Bushing
3	1-643172	3	Elbow-90 DEG
4	95-8972	1	Grommet
6	116-1704	1	Cap-Fuel, Ratcheting
7	116-3408	1	Fitting-Fuel, Bulkhead
99	116-7264	1	Kit, Vantage Fuel Gage Replacement



Electrical Assembly

Ref.	Part Number	Qty.	Description	Ref.	Part Number	Qty.	Description
2	117-0543-01	1	Cover-Battery	14	3290-148	2	Nut-Whizlock #10-24
3	1-633651	2	Bolt-Holddown	15	115-3864	1	Cable-Battery, Positive
4	1-543792	2	Wingnut-Nyloc 1/4-20	16	105-0836	1	Cable-Battery, Black
5	114-0279	1	Switch-PTO	17	3256-23	2	Washer-5/16 Sae
6	117-2222	1	Switch-Ignition	18	322-3	2	Screw-HH 5/16-18 X 3/4
7	116-8893	1	Module-Hour Meter	19	109-5715	2	Nut-Hex Flange 5/16-18
8	1-513152	1	Switch-Closed, Normally	20	3253-3	1	Washer-Lock 1/4
10	1-633181	2	Plate-Tapped	21	3217-5	1	Nut-Hex 1/4-20
11	32105-13	4	Screw-HWH #10-24 X 3/4	22	1-303287	5	Tie-Cable 5 1/2 (Small)
12	116-4615	1	Harness-Wire ●	23	117-2781	1	Grommet
12:1	109103	1	Fuse-Blade, 30 Amp	28	103-2106	1	Key-Exmark Logo
12:2	109102	1	Fuse-Blade, 25 Amp	29	116-8845	1	Harness-Neutral
12:3	218-578	1	Fuse-Blade, 10 Amp	30	116-8844	1	Harness-Opt
12:4	116-0053	1	Cap-Plug	31	82-2190	2	Switch-Bail
12:5	103-3895	1	Diode-Tvs	32	1-513051	1	Switch-Open, Normally
13	3229-20	2	Screw-CARR				

● Use dielectric grease on all unsealed connectors and terminals only. Do not apply in sealed connectors.

Notes:

Notes:

EXMARK® MAINTENANCE

MAXIMIZE THE PERFORMANCE OF YOUR EXMARK.

4-CYCLE PREMIUM ENGINE OIL

Part No. 116-3373

Both SAE 30 and SAE 10W-30 in one bottle.

Contains increased levels of zinc and phosphorus for better lubricity.

No Viscosity Index Improvers that tend to shear down in high heat.

Synthetic formulation.

Gas & Diesel compatible.

Anti-corrosion additives.

API 'SL' and JASO rated with wet clutch compatibility for other machines.

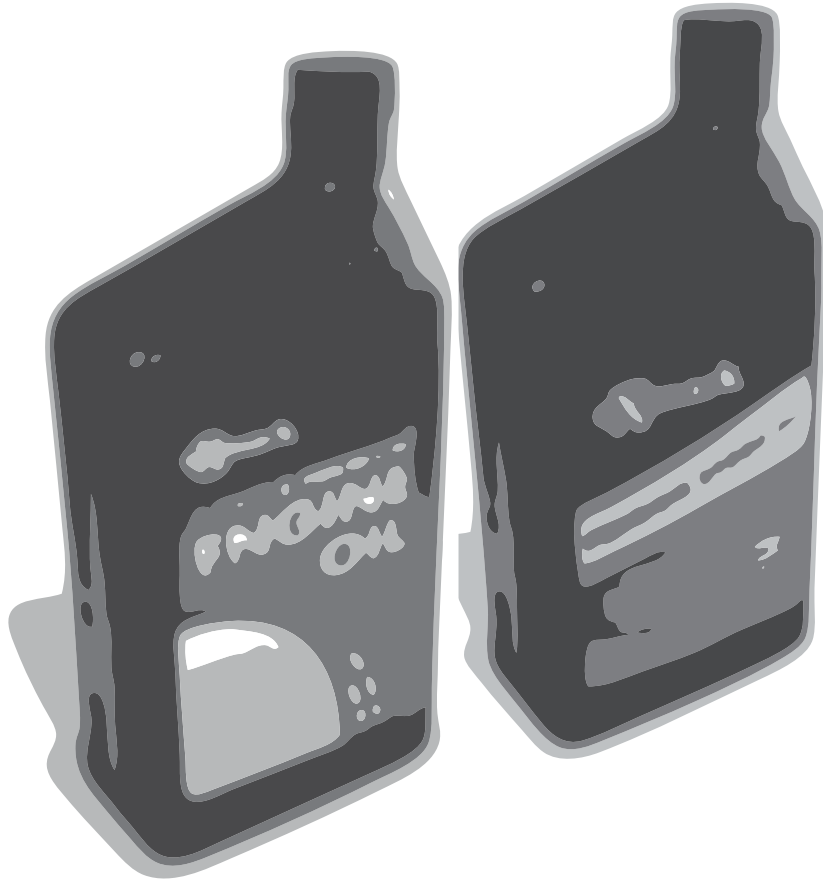
PREMIUM HYDRO OIL

Part No. 109-9828

Commercial quality for tough, high-heat conditions.

Designed specifically for zero-turn mower hydraulic systems.

Superior shear resistance under heavy loads.



Available from your local Exmark dealer. Find your closest dealer at exmark.com

EXMARK ACCESSORIES AND OPTIONS*

MID-MOUNT RIDING ACCESSORIES AND OPTIONS

CUSTOM RIDE SEAT SUSPENSION SYSTEM	OPERATOR CONTROLLED DISCHARGE
FULL SUSPENSION SEAT	SUN SHADE
DECK LIFT ASSIST KIT	TRASH CONTAINER
HITCH KIT	TURF STRIPER
LIGHT KIT	ULTRA VAC COLLECTION SYSTEM
12V POWER PORT	ULTRA VAC QUICK DISPOSAL SYSTEM
MICRO-MULCH SYSTEM	

OUT-FRONT RIDING ACCESSORIES AND OPTIONS

CUSTOM RIDE SEAT SUSPENSION SYSTEM	SNOW BLADE
DUAL-TAIL WHEEL	SNOWBLOWER
FLOOR PAN EXTENDER	SUN SHADE
HITCH KIT	TRASH CONTAINER
LIGHT KIT	ULTRA VAC COLLECTION SYSTEM
MICRO-MULCH SYSTEM	ULTRA VAC QUICK DISPOSAL SYSTEM
ROLL OVER PROTECTION SYSTEM (ROPS)	WEATHER CAB

WALK-BEHIND ACCESSORIES AND OPTIONS

GRASS CATCHER	TURF STRIPER
MICRO-MULCH SYSTEM	STANDON

*Some accessories and options not available for some models.

Place Model No. and Serial No.
Label Here (Included in the Literature
Pack) or Fill in Below

Model No. _____

Serial No. _____

Date Purchased _____

Engine Model No. and Spec. No. _____

Engine Serial No. (E/No) _____

© 2013 Exmark Mfg. Co., Inc.
Industrial Park Box 808
Beatrice, NE 68310
All Rights Reserved

Part No. 4501-521 Rev. A
(402) 223-6300
Fax (402) 223-5489
Printed in the USA.

