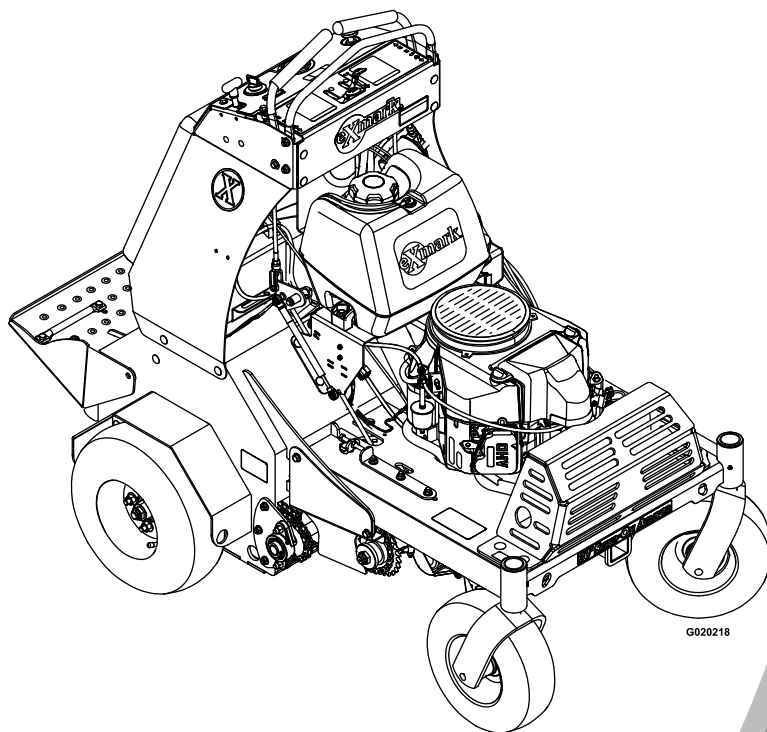




# STAND-ON AERATOR

Model No. SAR481KA30—Serial No. 31300000 and Up

Picture below may not reflect actual product.



# Parts Manual

Part No. 4501-566 Rev. B

# Ordering Replacement Parts

To order replacement parts, please supply the part number, the quantity, and the description of each part desired.

## Understanding Reference Numbers

Each identified part in an illustration has a reference number. The reference number for a part also appears in the parts list, along with other information about the part.

This catalog uses two special reference number formats, one to indicate parts in a service assembly and another to indicate the quantity of a given part in an illustration.

## Service Assembly Reference Numbers

Parts in service assemblies have reference numbers in the form a:b. The a represents the reference number of the entire service assembly and the b represents a sequential number unique to each part within the service assembly.

For example, a wheel assembly might be identified by reference number 6, the tire by 6:1, the valve by 6:2, and the wheel by 6:3. When you order the assembly identified by reference number 6, you receive all parts identified by reference numbers 6:1, 6:2, and 6:3. However, you may also order any part individually. Reference numbers of this type appear in illustration and in parts lists.

## Reference Numbers Indicating Quantity

In an illustration, if a reference number indicates more than one part, the reference number has the form nX y. The n represents the quantity of the part, the X is the multiplication symbol, and the y represents the reference number.

For example, in an illustration, the reference number 2X 37 means that two of the parts identified by reference number 37 are indicated.

# List of Abbreviations

<b>AR:</b> as required	<b>HJ:</b> hex jam	<b>PRH:</b> phillips round head
<b>ASM:</b> assembly	<b>HLH:</b> hex lag head	<b>PTH:</b> phillips truss head
<b>BBC:</b> blade brake control	<b>HOC:</b> height-of-cut	<b>PTO:</b> power-take-off
<b>BHTF:</b> button head thread forming	<b>HSBH:</b> hex socket button head	<b>RH:</b> right hand
<b>CARR:</b> carriage	<b>HSFH:</b> hex socket flat head	<b>ROPS:</b> roll-over protection system
<b>CCW:</b> counter clockwise	<b>HSH:</b> hex socket head	<b>RRB:</b> rear roller brush
<b>CW:</b> clockwise	<b>HWH:</b> hex washer head	<b>SFH:</b> slotted fillister head
<b>DEG:</b> degrees	<b>HWHTF:</b> hex washer head thread forming	<b>SHH:</b> slotted hex head
<b>DPA:</b> Dual Point Adjustment	<b>HYD:</b> hydraulic	<b>SHWH:</b> slotted hex washer head
<b>ECM:</b> electronic control module	<b>LH:</b> left hand	<b>SPH:</b> slotted pan head
<b>EXT:</b> external	<b>LP:</b> Liquefied Petroleum Gas	<b>SQH:</b> square head
<b>FH:</b> flat head	<b>LPG:</b> Liquefied Petroleum Gas	<b>SRH:</b> slotted round head
<b>GA:</b> gauge	<b>NI:</b> nylon insert	<b>STD:</b> standard
<b>HD:</b> heavy-duty	<b>NPTF:</b> national pipe thread fine	<b>TAP:</b> self tapping
<b>HF:</b> hex flange	<b>PFH:</b> phillips flat head	<b>TTH:</b> torx truss head
<b>HH:</b> hex head	<b>PPH:</b> phillips pan head	
<b>HHF:</b> hex head flange	<b>PPHTF:</b> phillips pan head thread forming	
<b>HHFTF:</b> hex head flange thread forming		

# Touch Up Paint

Exmark black touch up spray paint – gloss black.

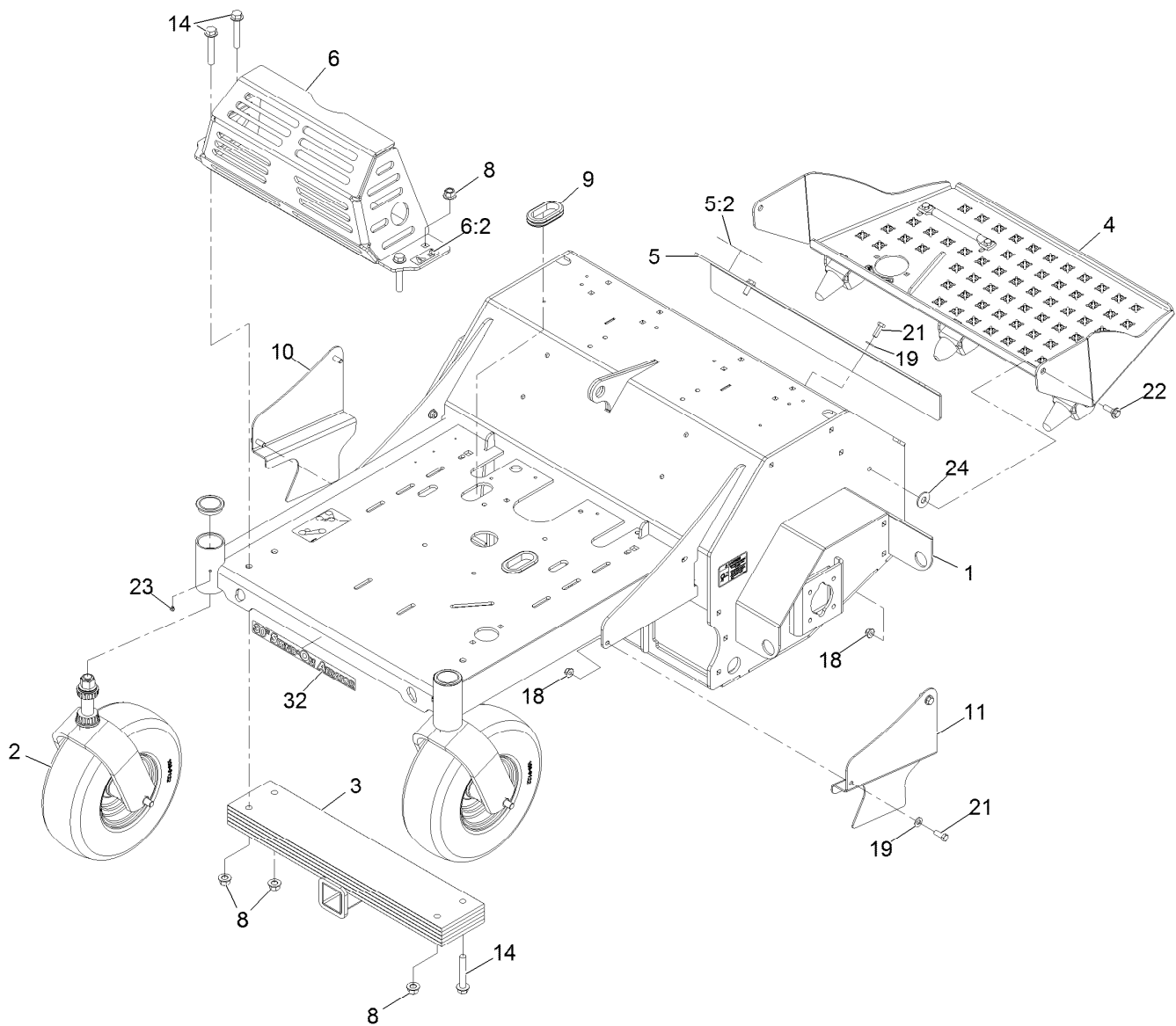
Exmark red touch up paint (spray paint – P/N 1-850337 - .6 oz liquid bottle – P/N 103-9140).



If your Exmark dealer does not have the Exmark part in stock, Exmark will get the parts to the dealer the next business day or the part will be FREE Guaranteed!! (Some restrictions apply. See your participating Exmark Dealer for details.)

## Contents

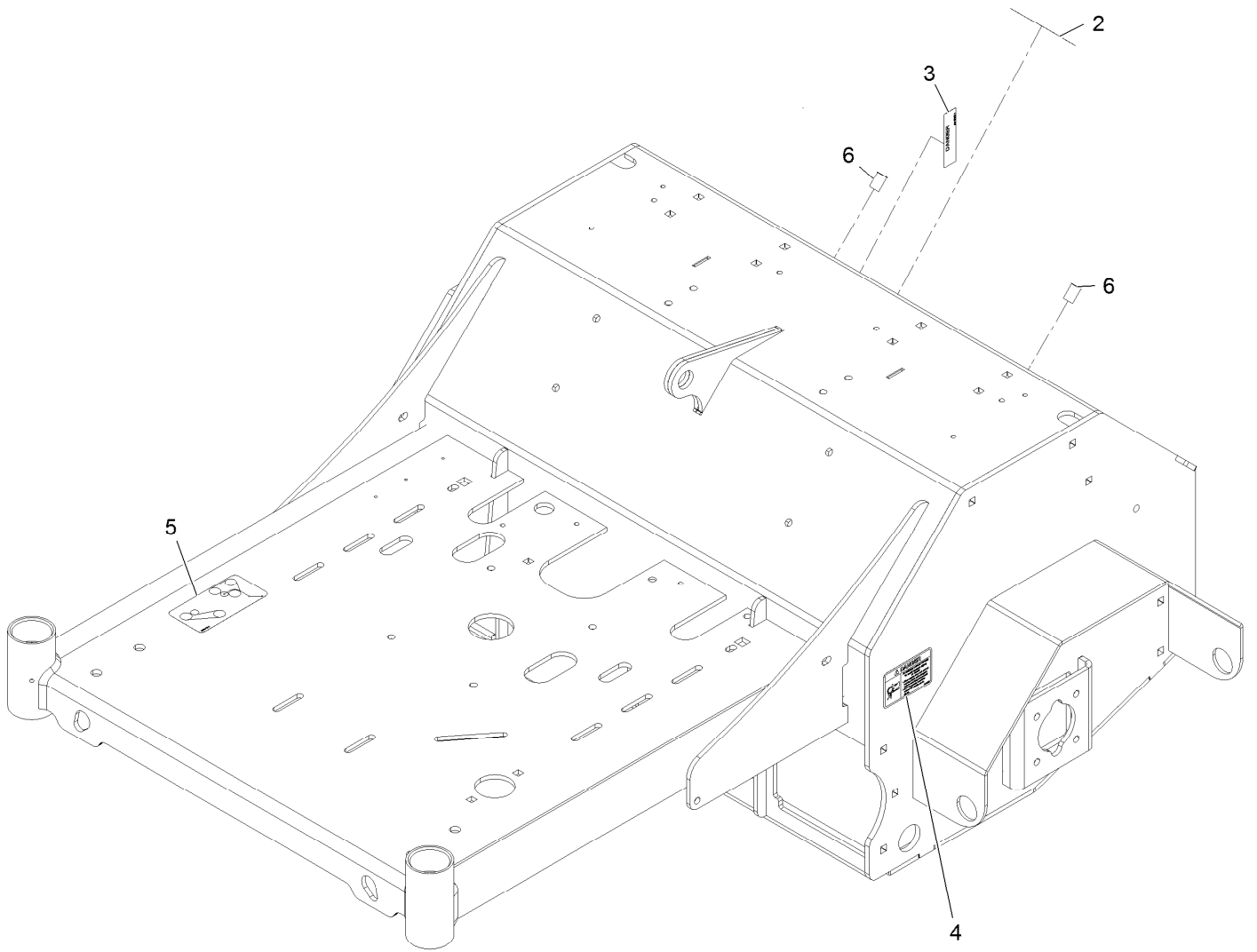
Main Frame Assembly .....	4
Main Frame W//Decals Assembly No. 116-8134 .....	5
Caster Wheel and Fork Assembly .....	6
Platform W/Decal and Rocker Assembly .....	7
Tower Assembly .....	8
Motion Control Assembly .....	9
Ground Drive Assembly .....	10
LH and RH Transaxle Assembly Nos. 116-9712 and 116-9713 .....	12
Axle and Bearing Assembly No. 116-9545 .....	13
Idler Arm Assembly No. 116-9307 .....	14
Auxiliary Hydraulic Assembly .....	15
Manifold W/Check and Relief Valve Assembly No. 116-9549 .....	17
Tine Assembly .....	18
RH Tine Wheel Assembly No. 116-6738 .....	19
LH Tine Wheel Assembly No. 116-6739 .....	20
Fuel Assembly .....	21
Engine Assembly .....	22
Electrical Assembly .....	23



## Main Frame Assembly

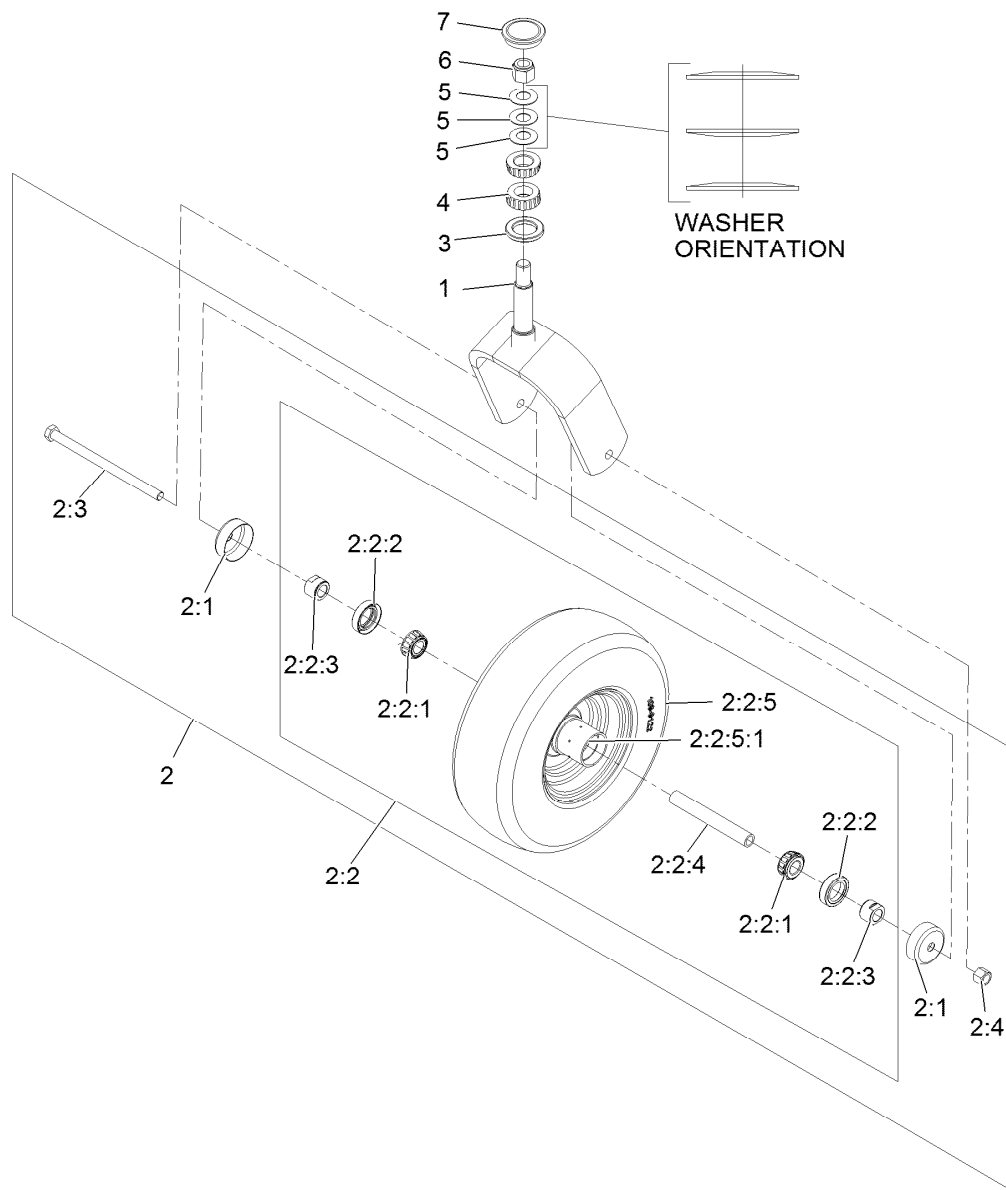
Ref.	Part Number	Qty.	Description	Ref.	Part Number	Qty.	Description
1	116-8134	1	Frame-Main ASM W/Decals	10	116-6612-01	1	Guard-Chain, RH
2	116-6536-01	2	Front Caster ASM W/Fork ●	11	116-6611-01	1	Guard-Chain, LH
3	116-6536-01	1	Weight	14	3234-40	4	Screw-HF
4	116-9134	1	Platform ASM W/Decal & Rocker	18	104-8301	6	Nut-Nyloc 3/8-16 Flg
5	116-6939	1	Access Cover ASM	19	3256-24	6	Washer-3/8 Sae
5:2	116-6459	1	Decal-Tine Ground Operation	21	323-6	6	Screw-HH 3/8-16 X 1
6	116-8258	1	Muffer Guard ASM	22	614672	2	Screw-Shoulder 3/8-16 X 1.295
6:2	115-2047	2	Decal-Surface, Hot	23	1-811010	2	Plug
8	99-5107	4	Nut-Lock 1/2-13	24	3256-6	2	Washer
9	126-0015	2	Grommet	32	116-6952	1	Decal-Stand-On Aerator 30

● Not serviced separately



## Main Frame W//Decals Assembly No. 116-8134

<i>Ref.</i>	<i>Part Number</i>	<i>Qty.</i>	<i>Description</i>
2	116-6455	1	Decal-Danger Rotating Tines
3	98-5954	1	Decal-Cover, Missing
4	116-6456	2	Decal-Danger Chain Drive
5	116-9391	1	Decal-Belt Routing
6	32148-10	2	Insert-Nut

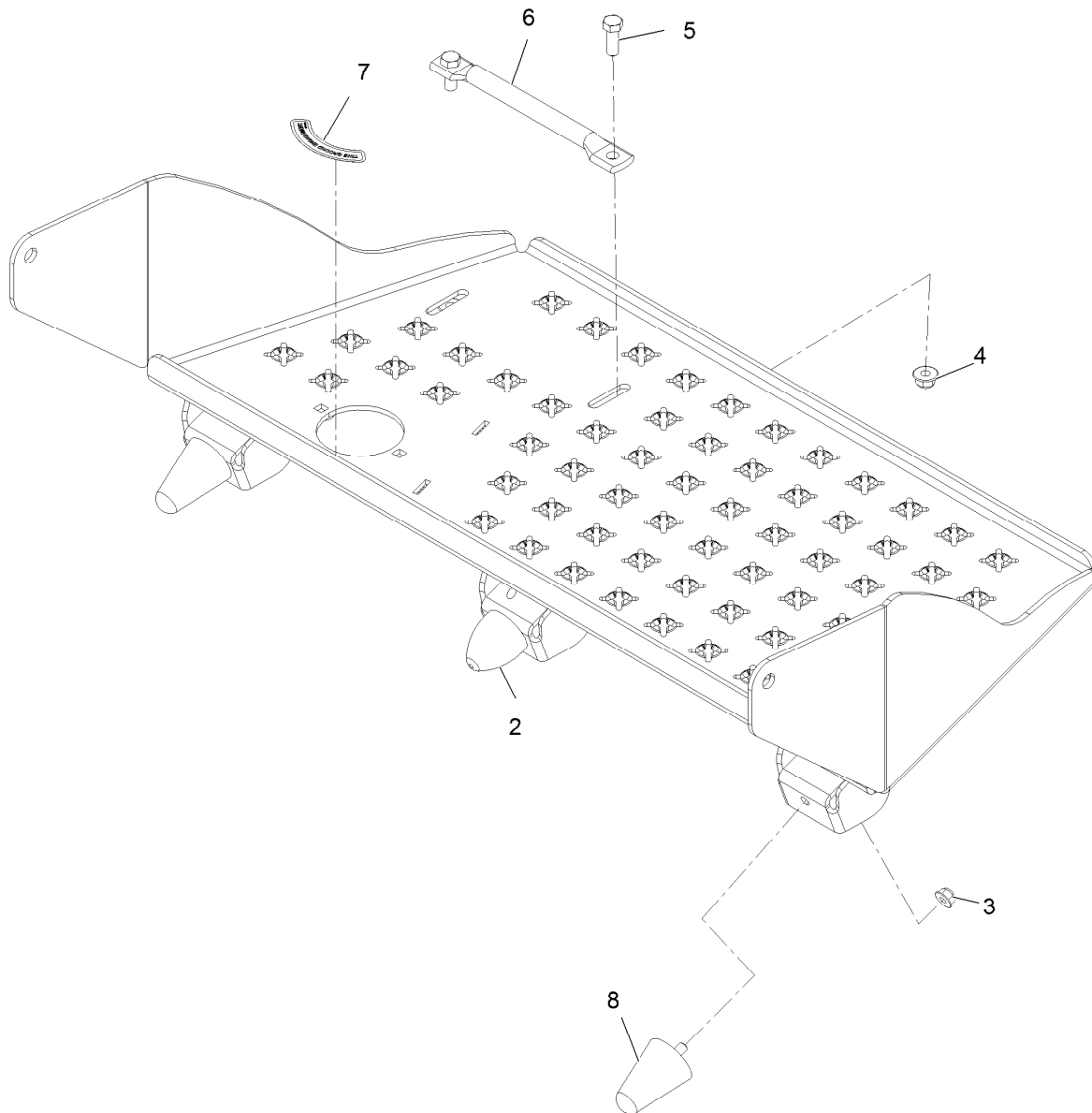


## Caster Wheel and Fork Assembly

Ref.	Part Number	Qty.	Description	Ref.	Part Number	Qty.	Description
1	116-6704-01	1	Caster	2:2:5:1	1-633584	1	Bearing-Cup
2	109-9126	1	Wheel And Tire ASM	2:3	325-42	1	Screw-HH 1/2-13 X 8
2:1	103-2768	2	Guard-Seal	2:4	3296-23	1	Nut-Nyloc 1/2-13
2:2		1	Wheel And Tire ASM ●	3	116-5647	1	Seal-Grease
2:2:1	1-633585	2	Bearing-Cone Tapered Roller	4	1-543509	2	Cone-Bearing Tapered Roller
2:2:2	103-0063	2	Seal-Double Lip	5	1-633508	3	Washer-Spring Disc
2:2:3	103-3051	2	Spacer-Nut ■	6	3296-51	1	Nut-Nyloc 3/4-10
2:2:4	103-3155	1	Axle-Caster	7	103-4882	1	Cap-Grease
2:2:5		1	Wheel And Tire ASM ●				

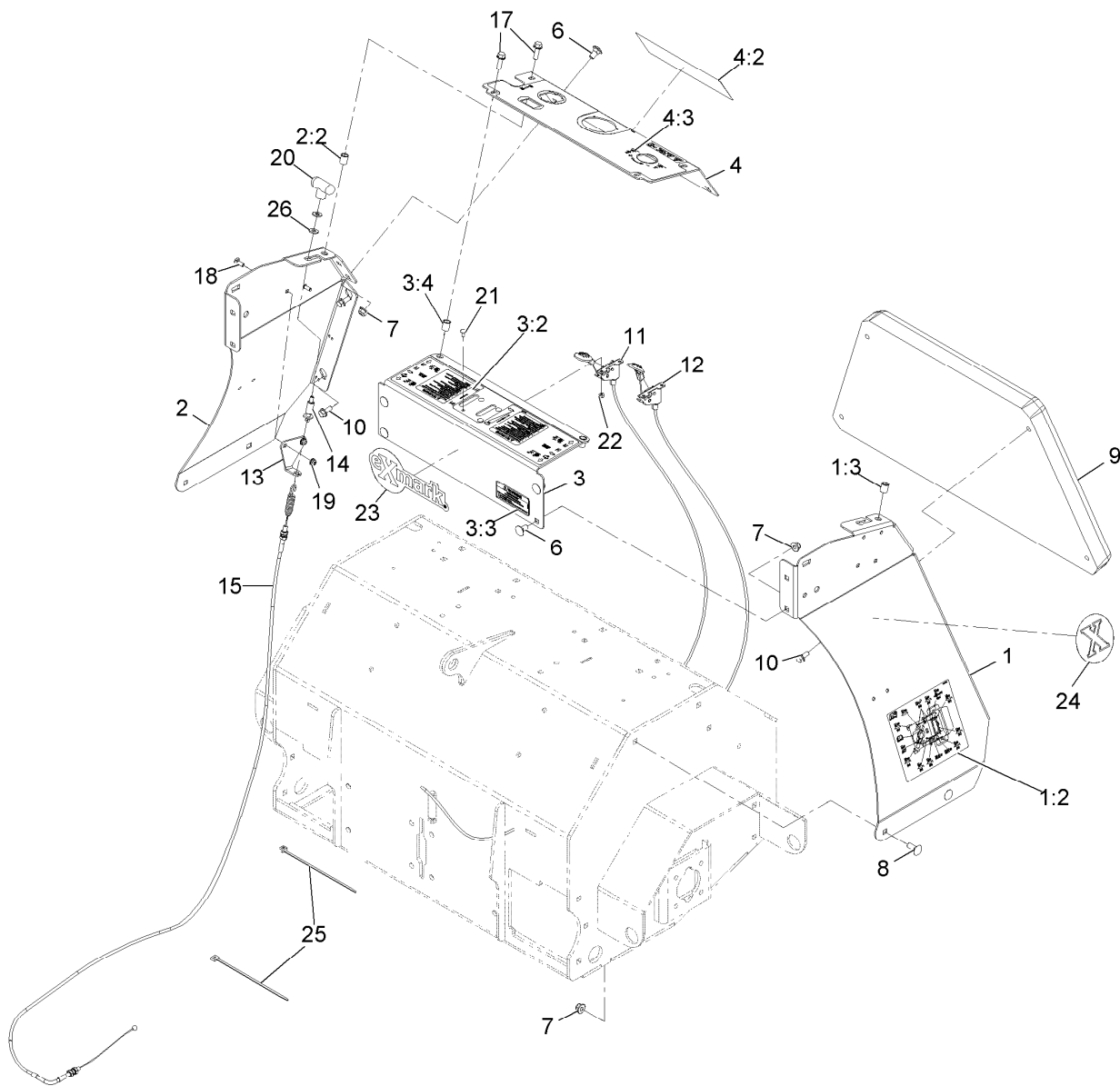
● Not serviced separately

■ Use Pro-Lock, Nut Type (P/N 1-840022, .5ml tube) on threads.



## Platform W/Decal and Rocker Assembly

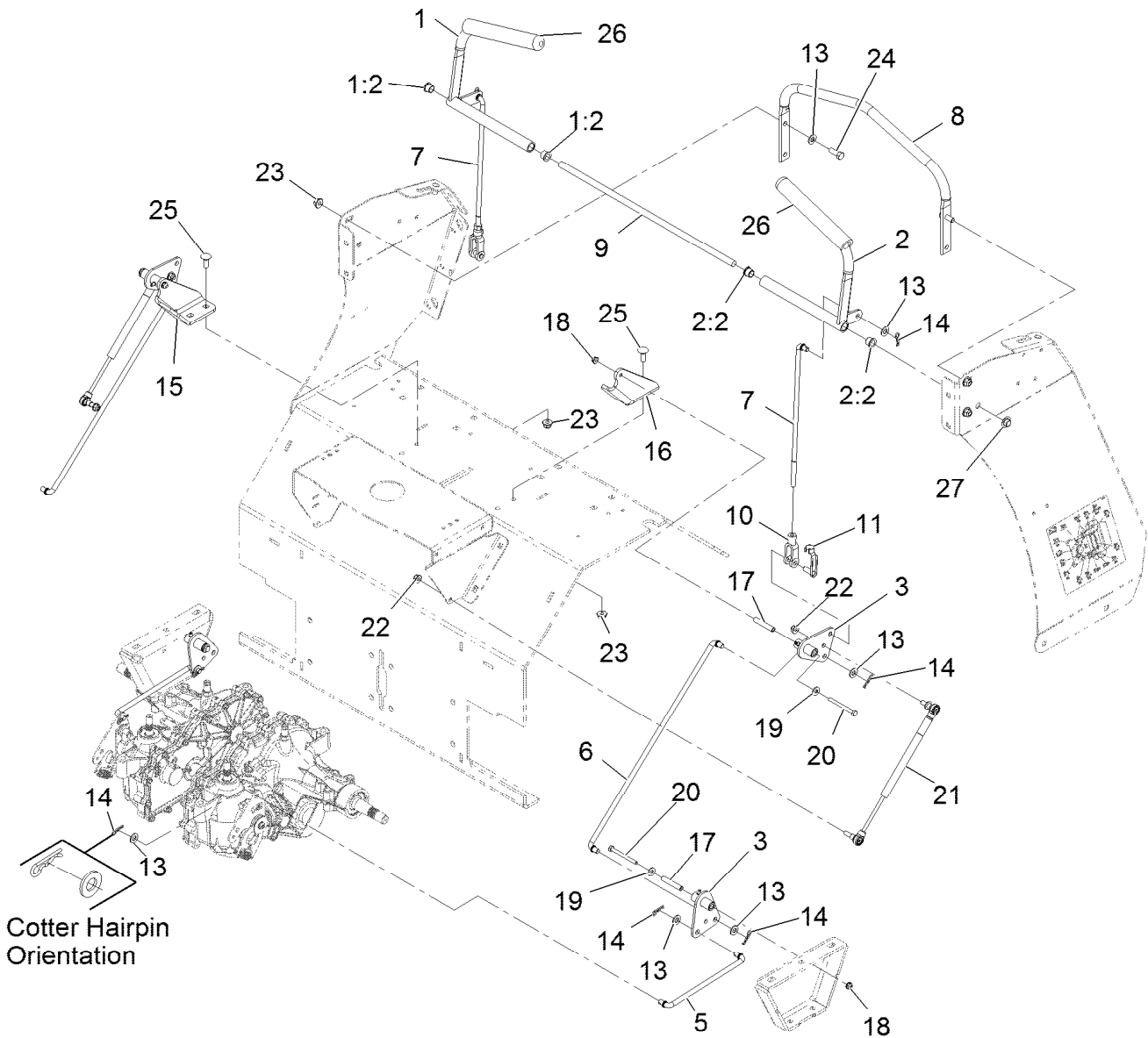
<i>Ref.</i>	<i>Part Number</i>	<i>Qty.</i>	<i>Description</i>
2	114-1926	1	Bumper-Rubber
3	104-8300	3	Nut-Nyloc 5/16-18 Flg
4	104-8301	2	Nut-Nyloc 3/8-16 Flg
5	323-6	2	Screw-HH 3/8-16 X 1
6	116-8950-03	1	Rocker-Foot Pedal
7	116-6460	1	Decal-Tine Ground Engagement
8	114-1925	2	Bumper-Rubber



## Tower Assembly

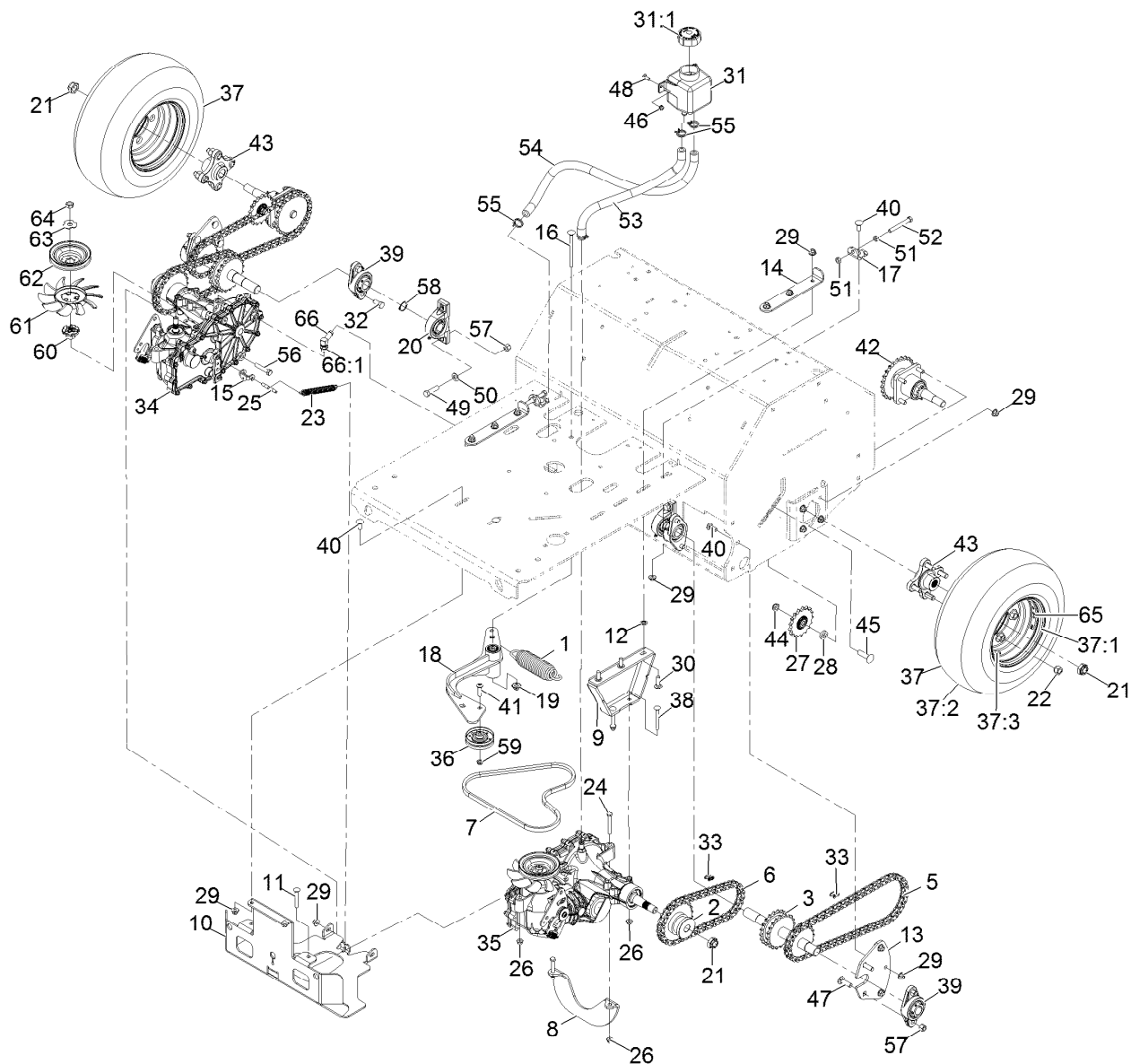
Ref.	Part Number	Qty.	Description	Ref.	Part Number	Qty.	Description
1	116-9386	1	Panel-Side,LH W/Decals-Black	9	116-6765	1	Cushion, Grey
1:2	116-9392	1	Decal-Service Aid Ce	10	3234-5	4	Screw-HH Flg 5/16-18 X 3/4
1:3	32148-7	1	Nut-Insert	11	109-9147	1	Control-Choke
2	116-7658	1	ASM-Panel,Side RH (Black)	12	109-3958	1	Control-Throttle
2:2	32148-7	1	Nut-Insert	13	116-6630	1	Bracket-Cable, Brake
3	116-6783	1	ASM-Plate W/Decal	14	116-7504	1	Link-Cable, Brake
3:2	116-7027	1	Decal-Control Panel Warning	15	116-7503	1	Cable-Brake
3:3	116-6457	1	Decal-Warning Stored Energy	17	3234-29	4	Screw-HH Flg 5/16-18 X 1
3:4	32148-7	2	Nut-Insert	18	3229-1	2	Bolt-Carriage 1/4-20 X 3/4
4	116-9141	1	ASM-Console W/Decal	19	104-7201	2	Nut-Nyloc 1/4-20 Flg
4:2	116-7029	1	Decal-Slope Warning	20	116-7607	1	Knob-Tee
4:3	116-9132	1	Decal-Danger, Control Panel	21	1-807513	4	Bolt-Carriage #10-24 X 1/2
6	3231-1	6	Bolt-Carriage 3/8-16 X 3/4	22	3296-2	4	Nut-Nyloc #10-24
7	104-8301	10	Nut-Nyloc 3/8-16 Flg	23	103-2882	1	Decal, Exmark Logo
8	3231-2	4	Bolt-Carriage 3/8-16 X 1	24	116-7034	2	Decal-Exmark X-Logo 3.85
				25	1-303335	2	Tie-Cable 7 15/16 (Large)
				26	3256-2	2	Washer-1/4 Std





## Motion Control Assembly

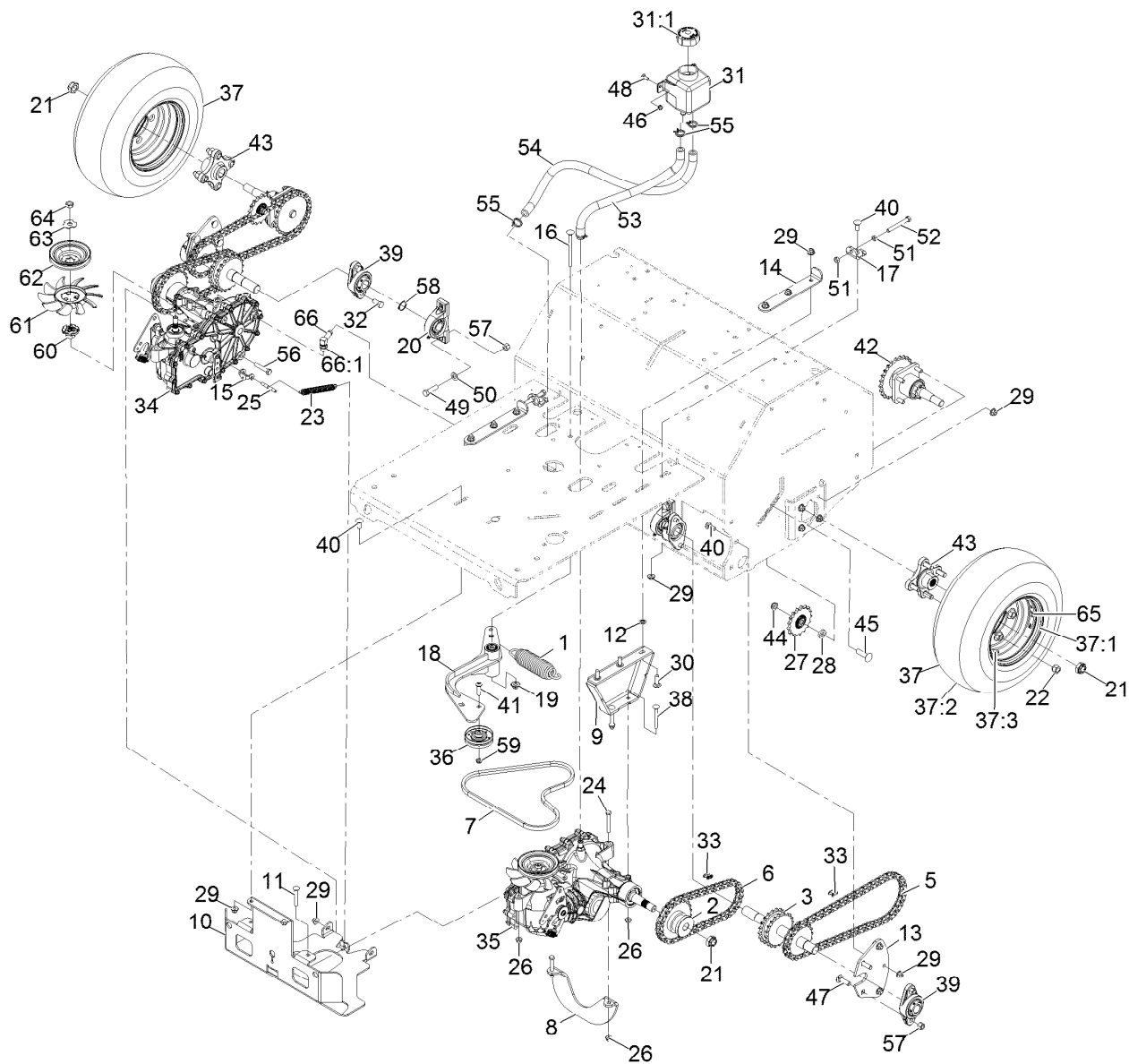
Ref.	Part Number	Qty.	Description	Ref.	Part Number	Qty.	Description
1	116-6567	1	RH Control Handle ASM	15	116-6576-03	1	Bracket-Pivot, RH
1:2	116-4279	2	Bearing-Flange	16	116-6577-03	1	Bracket-Pivot, LH
2	116-6566	1	LH Control Handle ASM	17	116-7224	4	Spacer
2:2	116-4279	2	Bearing-Flange	18	104-7201	4	Nut-Nyloc 1/4-20 Flg
3	126-0340	4	Bellcrank W/Zerk	19	3256-2	4	Washer-1/4 Std
5	116-6722	2	Link-Hydro Control	20	321-14	4	Screw-HH 1/4-20 X 2 3/4
6	116-9298	2	Link-Bell Crank Control	21	116-0027	2	Damper-Control, Motion
7	116-6730	2	Link-Bellcrank Control	22	104-8300	4	Nut-Nyloc 5/16-18 Flg
8	116-6608-03	1	Bar-Reference	23	104-8301	8	Nut-Nyloc 3/8-16 Flg
9	116-6607	1	Shaft-Pivot, Control	24	323-6	4	Screw-HH 3/8-16 X 1
10	1-633131	2	Yoke-Linkage, Brake	25	3231-2	4	Bolt-Carriage 3/8-16 X 1
11	103-2399	2	Pin-Clevis Spring 3/8	26	103-8153	2	Grip-Lever, Control
13	3256-24	14	Washer-3/8 Sae	27	32112-14	2	Nut-Push
14	1-806003	10	Hairpin-Cotter				



## Ground Drive Assembly

Ref.	Part Number	Qty.	Description	Ref.	Part Number	Qty.	Description
1	116-6317	1	Spring-Extension	19	109-6658	1	Nut-Nyloc 3/8-16 Flg
2	116-9305	2	Hub Chain Drive ASM	20	116-6756	2	Bearing-Pillow Block
3	116-9684	2	Jackshaft ASM	21	116-2839	4	Nut-Lock
5	116-6895	2	Chain-Roller, #50	22	242-50	8	Nut-Lug 1/2-20
6	116-6896	2	Link-#50 Roller Chain, 47	23	76-4660	1	Spring-Door
7	116-8874	1	Belt-4L Section	24	322-12	2	Screw-HH 5/16-18 X 2 1/2
8	116-9127-03	1	Angle Brace	25	116-7596	1	Pin-Brake, Park
9	116-9710-03	2	Mount-Transmission	26	104-8300	8	Nut-Nyloc 5/16-18 Flg
10	116-9711-03	1	Guard-Transmission	27	116-6719	2	Sprocket-Idler, 17T
11	3230-7	2	Bolt-Carriage 5/16-18 X 2 1/4	28	104-8417	2	Washer
12	107-3154	6	Nut-Push 3/8-16	29	104-8301	26	Nut-Nyloc 3/8-16 Flg
13	116-6596-01	2	Plate-Jackshaft	30	3231-25	6	Bolt-Carriage 3/8-16 X 1 1/4
14	116-6619	2	Plate-Adjustment, Transmission	31	109-2250	1	Vent-Tank, Hydro
15	116-7597	1	Yoke-Park Brake	31:1	109-3320	1	Cap-Reservoir, HYD
16	9000779	1	Bolt 3/8-16 X 4 1/2	32	116-7109	4	Screw-HH
17	116-6723	2	Bracket-Hydro, Adjust	33	116-6897	4	Link-Connecting, #50
18	116-9307	1	Idler Arm ASM	34	116-9712	1	RH Transaxle ASM (No Fan)
				35	116-9713	1	LH Transaxle ASM (No Fan)
				36	116-9715	1	Pulley-Idler

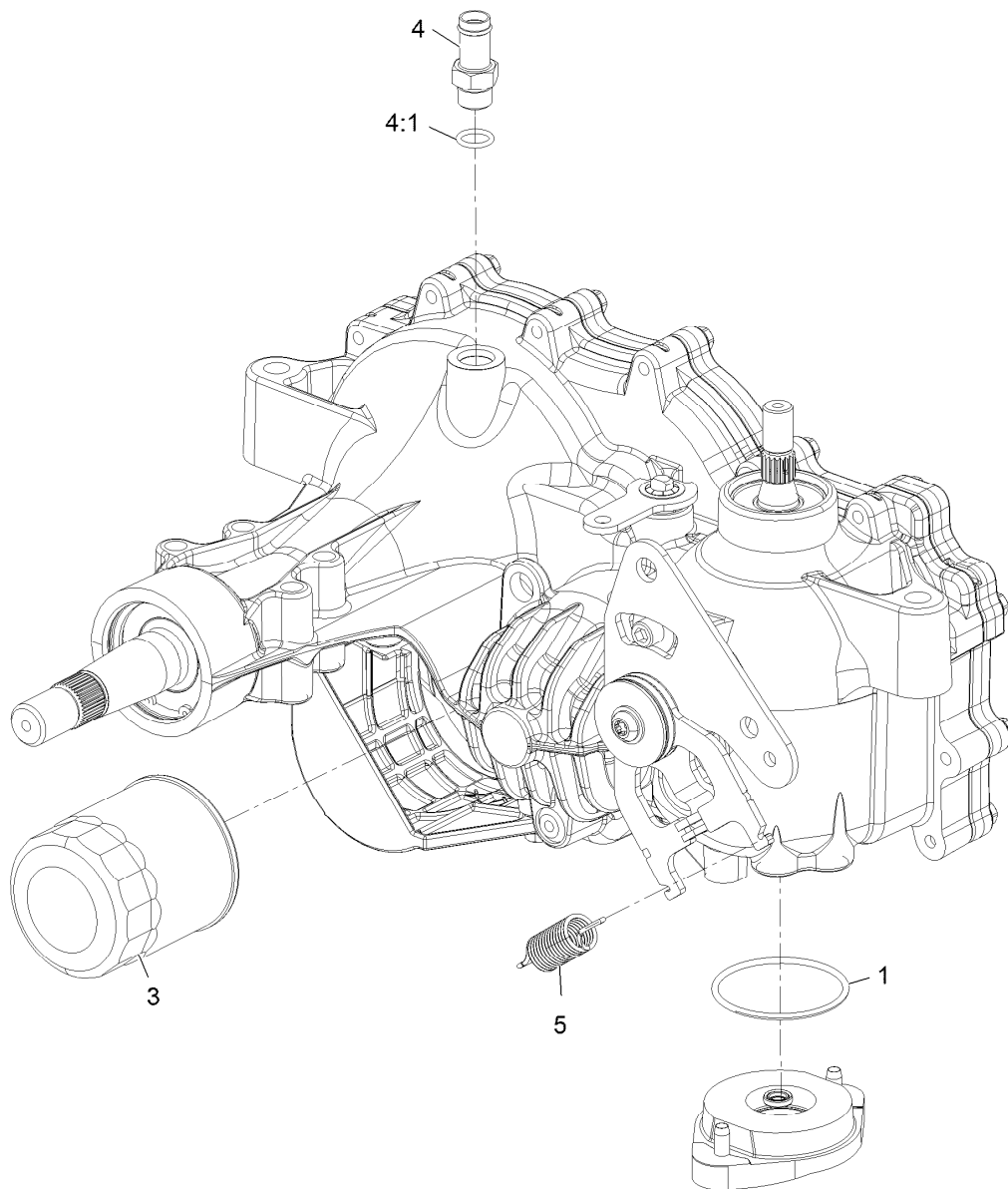
● Use Pro-Lock, Nut Type (P/N 1-840022, .5ml tube) on threads.



## Ground Drive Assembly (continued)

Ref.	Part Number	Qty.	Description	Ref.	Part Number	Qty.	Description
37	116-6932	2	Tire ASM (16 X 6.50-8)	51	3217-7	4	Nut-Hex 3/8-16
37:1	116-6977	1	Rim (8 X 5.375)	52	99-8664	2	Bolt-HH 3/8-16 X 3 Tap
37:2	116-6978	1	Tire (16 X 6.50-8, 4 Ply)	53	116-6775	1	Hose-Hydraulic
37:3	232-27	1	Stem-Valve	54	116-6776	1	Hose-Hydraulic
38	3230-9	4	Bolt-Carriage 5/16-18 X 2 3/4	55	109-3322	4	Clamp-Hose
39	116-6777	4	Bearing-Flange, 2 Bolt	56	323-10	2	Screw-HH 3/8-16 X 2
40	3231-2	10	Bolt-Carriage 3/8-16 X 1	57	3296-48	8	Nut-Nyloc 7/16-14
41	116-9927	1	Screw-HSBH	58	32151-29	2	Ring-Retaining
42	116-9545	2	Axle And Bearing ASM	59	3296-59	1	Nut-Nyloc 3/8-16 Thin
43	116-3872	2	Hub-Offset	60	116-9705	2	Hub-Pulley
44	3296-45	2	Nut-Nyloc 1/2-13 Thin	61	116-9706	2	Fan
45	3233-14	2	Screw-CARR	62	116-9707	2	Pulley
46	104-7201	2	Nut-Nyloc 1/4-20 Flg	63	116-9708	2	Washer-Slotted
47	3232-3	4	Bolt-Carriage 7/16-14 X 1 1/2	64	116-9714	2	Nut-Jam, Hex 1/2-20 W/Patch ●
48	3229-1	2	Bolt-Carriage 1/4-20 X 3/4	65	116-9666	2	Decal-Wheel Hub And Nut Torques
49	324-6	4	Screw-HH 7/16-14 X 1 1/2	66	109-6449	1	Fitting-Elbow, 90
50	3256-25	4	Washer-7/16 Sae	66:1	237-42	1	O-Ring

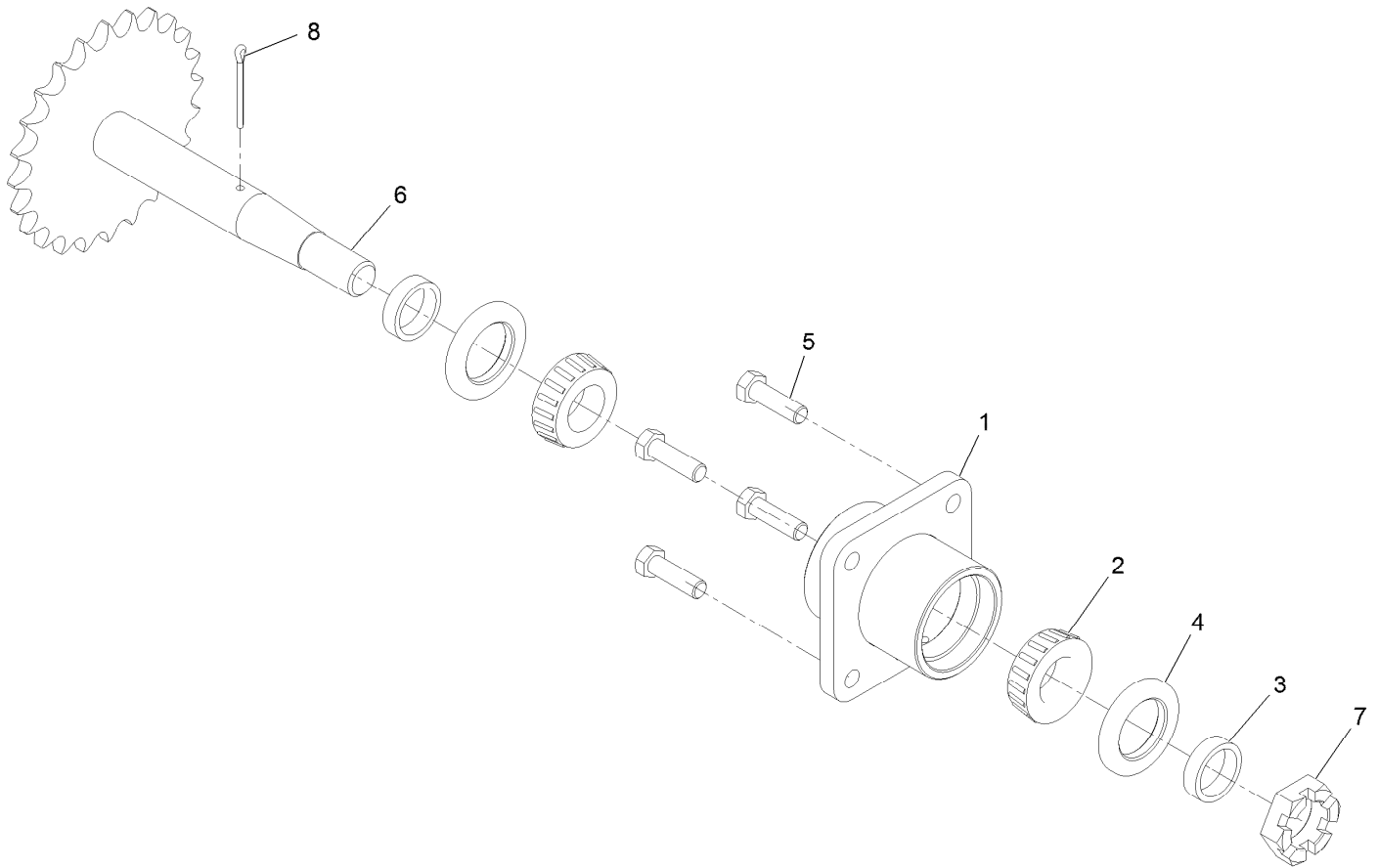
● Use Pro-Lock, Nut Type (P/N 1-840022, .5ml tube) on threads.



## LH and RH Transaxle Assembly Nos. 116-9712 and 116-9713

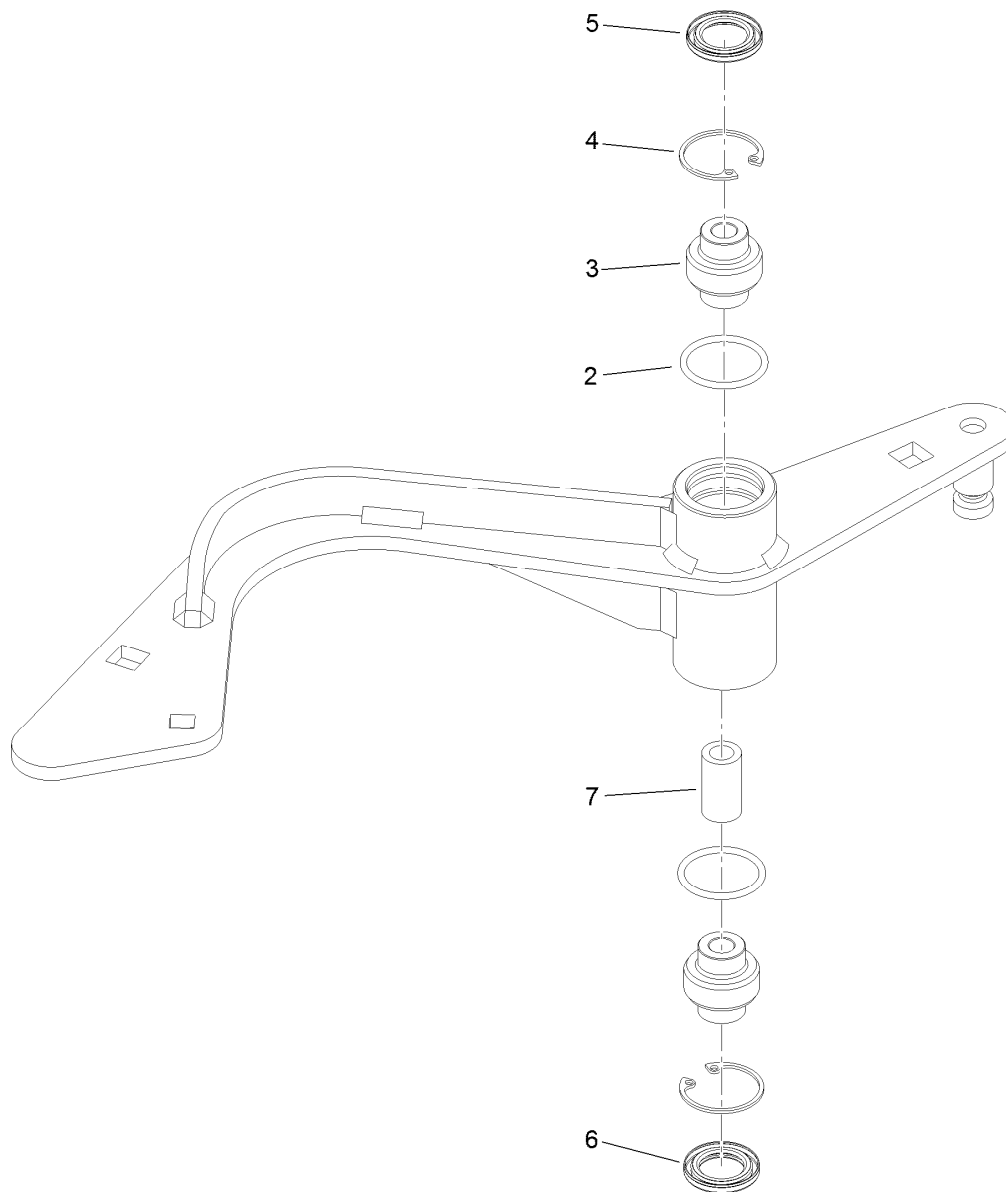
<i>Ref.</i>	<i>Part Number</i>	<i>Qty.</i>	<i>Description</i>
1	109-3540	1	O-Ring-Charge Seal Cover
3	109-3321	1	Filter-Hydraulic
4	109-3278	1	Adapter-Straight
4:1	1-603921	1	O-Ring-Sae #6
5	109-5592	1	Spring
99	109-3537	1	Complete Seal Kit ●

● Not illustrated



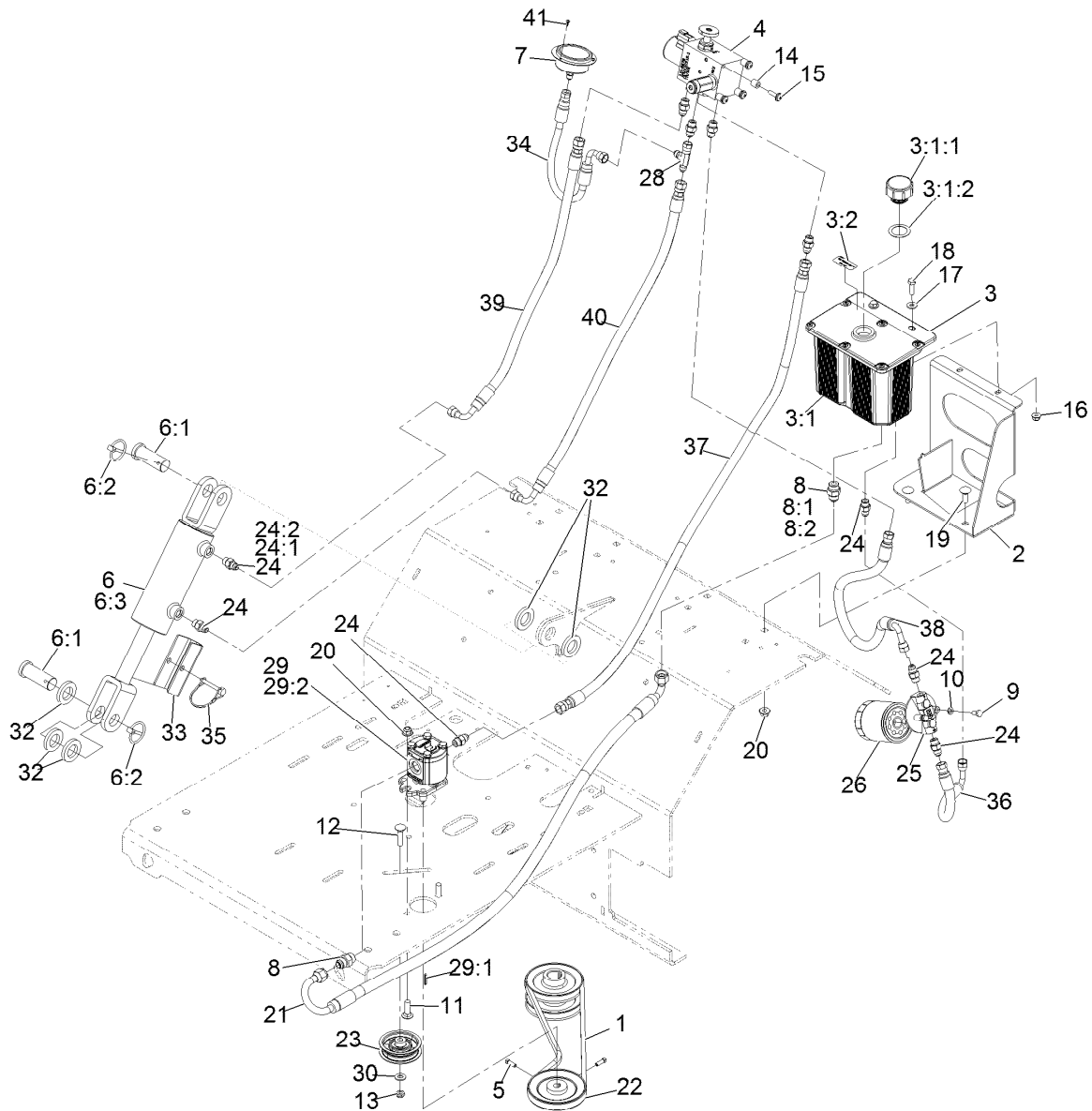
## Axle and Bearing Assembly No. 116-9545

<i>Ref.</i>	<i>Part Number</i>	<i>Qty.</i>	<i>Description</i>
1	116-6746-01	1	Mount-Bearing, Wheel
2	1-543509	2	Cone-Bearing Tapered Roller
3	116-6758	2	Spacer
4	1-543511	2	Seal-Grease
5	323-7	4	Screw-HH 3/8-16 X 1 1/4
6	116-9484	1	Axle
7	99-3139	1	Nut
8	1-806800	1	Pin-Cotter 9/64 X 1 1/2



## Idler Arm Assembly No. 116-9307

<i>Ref.</i>	<i>Part Number</i>	<i>Qty.</i>	<i>Description</i>
2	106-7159	2	O-Ring
3	103-3504	2	Bearing-Spherical
4	32120-10	2	Ring-Snap
5	103-3506	1	Seal-Single Lip
6	103-3505	1	Seal-Double Lip
7	1-603401	1	Spacer-Fender

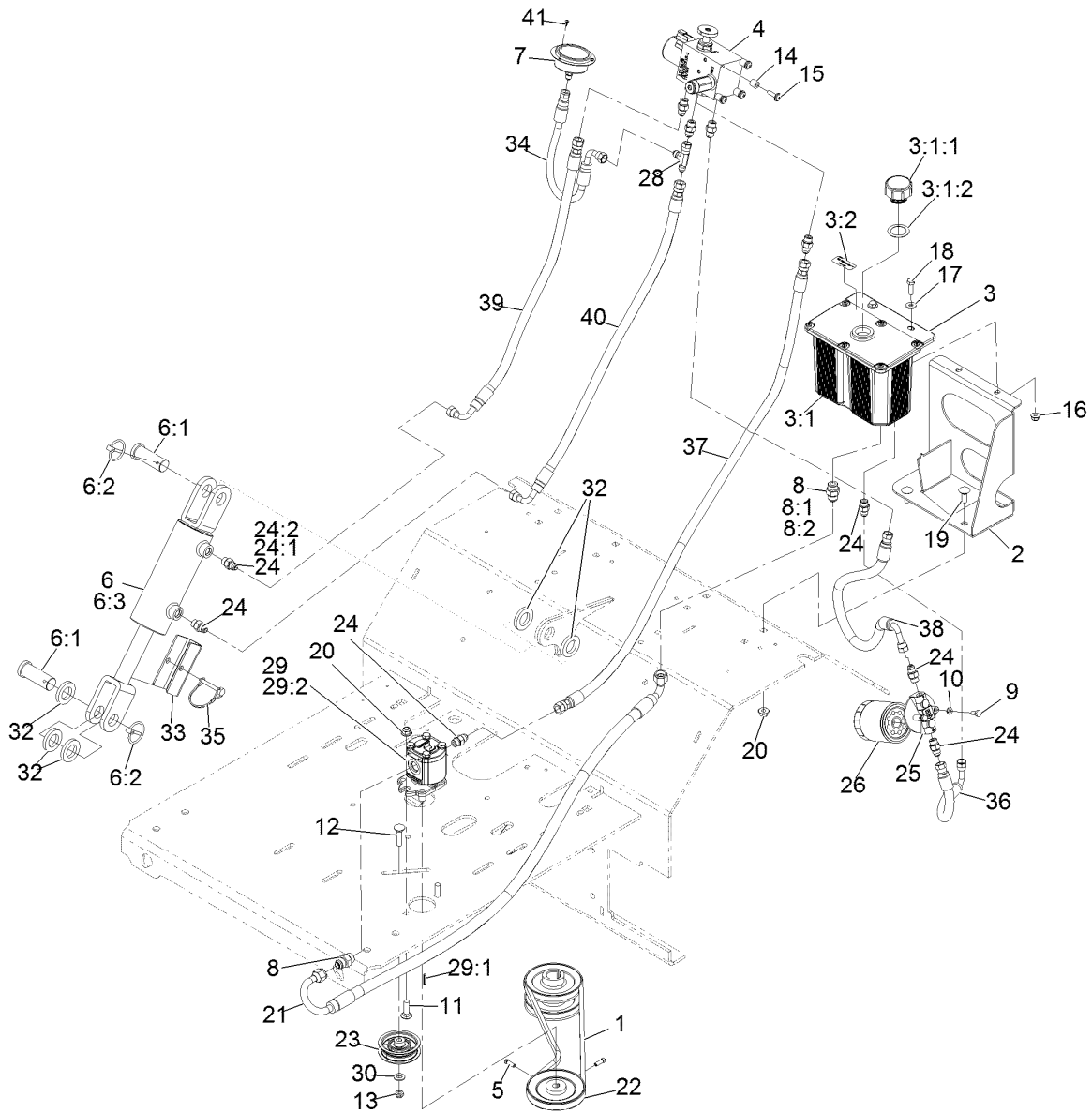


## Auxiliary Hydraulic Assembly

Ref.	Part Number	Qty.	Description	Ref.	Part Number	Qty.	Description
1	116-8874	1	Belt-4L Section	11	3231-25	2	Bolt-Carriage 3/8-16 X 1 1/4
2	116-6618-03	1	Bracket-Tank, Hydraulic	12	3231-4	1	Bolt-Carriage 3/8-16 X 1 1/2
3	116-7556	1	ASM-Reservoir W/Decal	13	3296-59	1	Nut-Nyloc 3/8-16 Thin
3:1		1	Tank-Hydraulic ●	14	22-7810	4	Spacer
3:1:1	103-1948	1	Cap-Reservoir, HYD	15	110-9361	4	Screw-PPH, Sems
3:1:2	103-1949	1	Gasket-Cap	16	104-8300	2	Nut-Nyloc 5/16-18 Flg
3:2	116-6990	1	Decal-Hydro Oil Aw-32	17	3256-2	2	Washer-1/4 Std
4	116-9549	1	Valve-Manifold	18	322-5	2	Screw-HH 5/16-18 X 1
5	3241-6	2	Screw-SQH ■	19	3231-2	4	Bolt-Carriage 3/8-16 X 1
6	116-6969	1	HYD Cylinder ASM	20	104-8301	6	Nut-Nyloc 3/8-16 Flg
6:1	116-7290	2	Pin-Clevis	21	116-9309	1	HYD Hose ASM
6:2	92-1298	2	Pin-Lynch	22	116-6667	1	Pulley
6:3	127-3234	1	Seal Kit	23	116-6760	1	Pulley-Idler, Flat
7	116-8178	1	Gauge-Pressure	24	103-2156	6	Adapter-Straight
8	1-603990	2	Adapter-Straight	24:1	1-603921	1	O-Ring-Sae #6
8:1	1-603920	1	O-Ring-Sae #8	24:2	103-1020	1	O-Ring-37 Flare #6
8:2	1-603992	1	O-Ring-37 Flare #8	25	104-7836	1	Filter-Head
9	321-3	2	Screw-HH 1/4-20 X 5/8	26	109-4180	1	Element, Oil Filter
10	1-805004	2	Washer-Lock 1/4 Heavy	28	353-877	1	Fitting-HYD, Tee (Swivel)

● Not serviced separately

■ Use Pro-Lock, Nut Type (P/N 1-840022, .5ml tube) on threads.



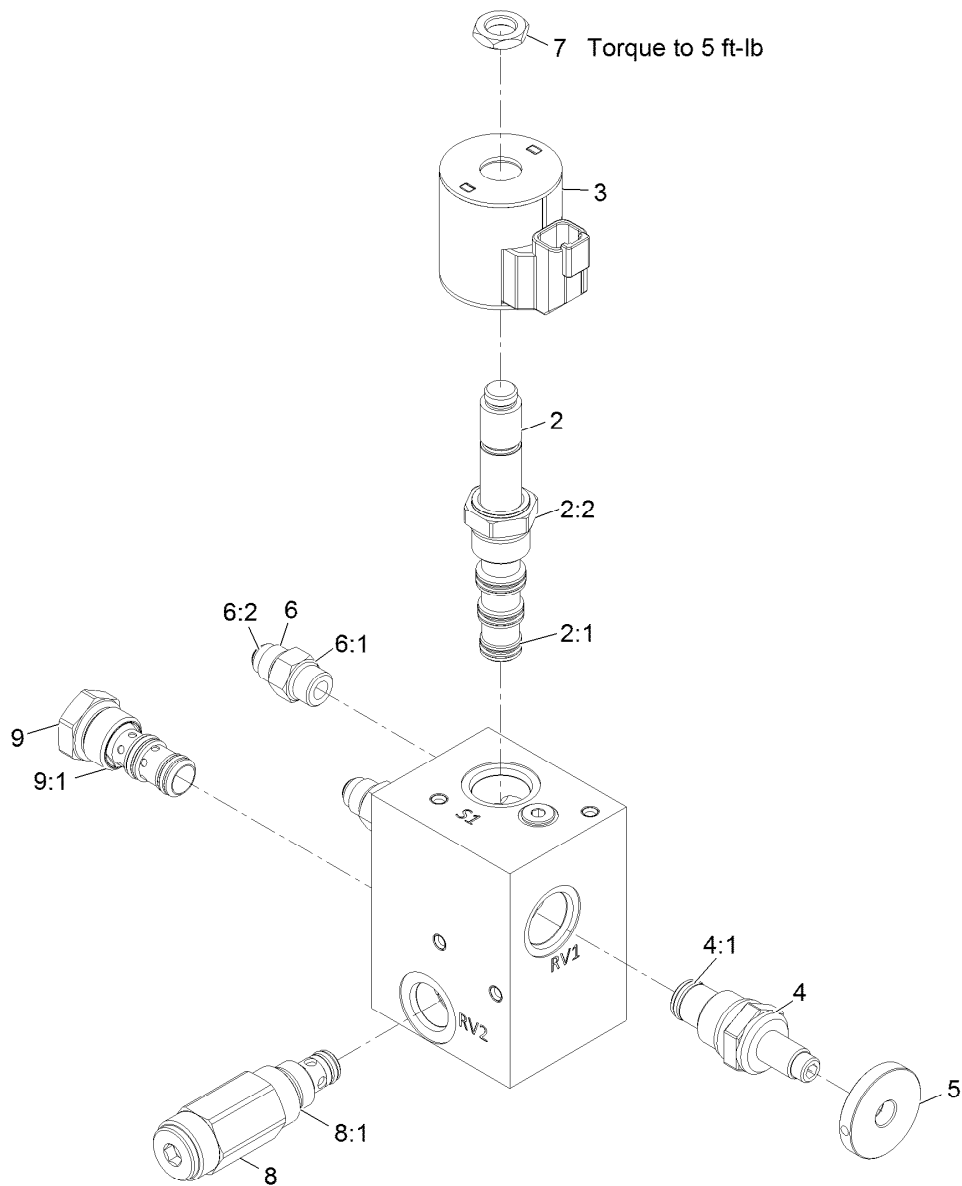
## Auxiliary Hydraulic Assembly (continued)

Ref.	Part Number	Qty.	Description	Ref.	Part Number	Qty.	Description
29	116-9129	1	Pump-Hydraulic	35	112-2583	1	Pin-Locking
29:1	115-7855	1	Key-Square	36	116-6675	1	HYD LP Hose ASM
29:2	112-0199	1	Seal Kit	37	116-8151	1	Hydraulic Hose ASM
30	3256-24	1	Washer-3/8 Sae	38	116-9308	1	Hydraulic Hose ASM
32	116-6781	5	Spacer	39	116-6677	1	Hydraulic Hose ASM
33	116-7307-01	1	Stop-Cylinder	40	116-6678	1	HYD Hp Hose ASM
34	116-8180	1	HYD Hp Hose ASM (3/8,Str,90)	41	363-8552	3	Screw-TAP,6-32X3/8,Phph,Stl,Rohs

● Not serviced separately

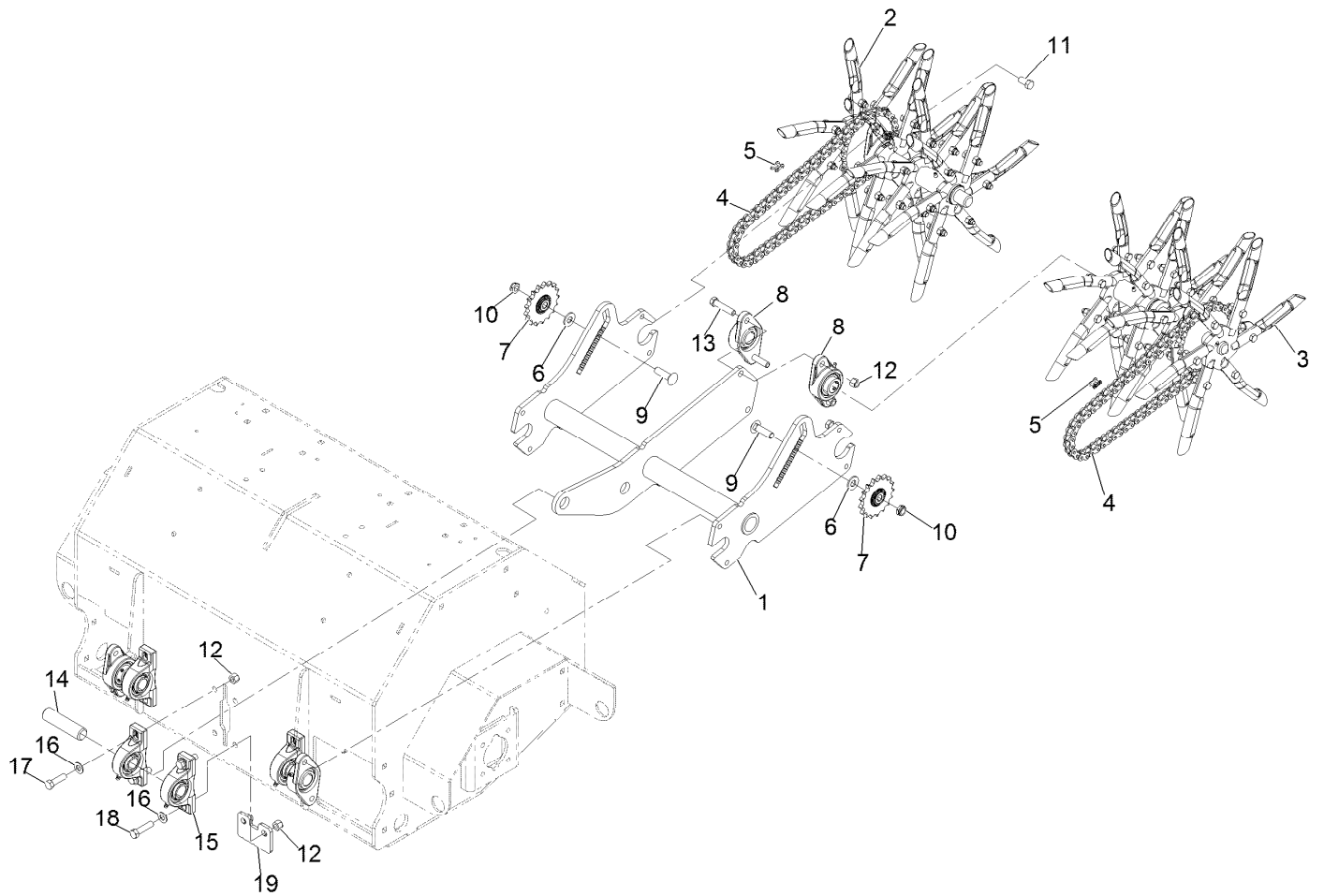
■ Use Pro-Lock, Nut Type (P/N 1-840022, .5ml tube) on threads.





## Manifold W/Check and Relief Valve Assembly No. 116-9549

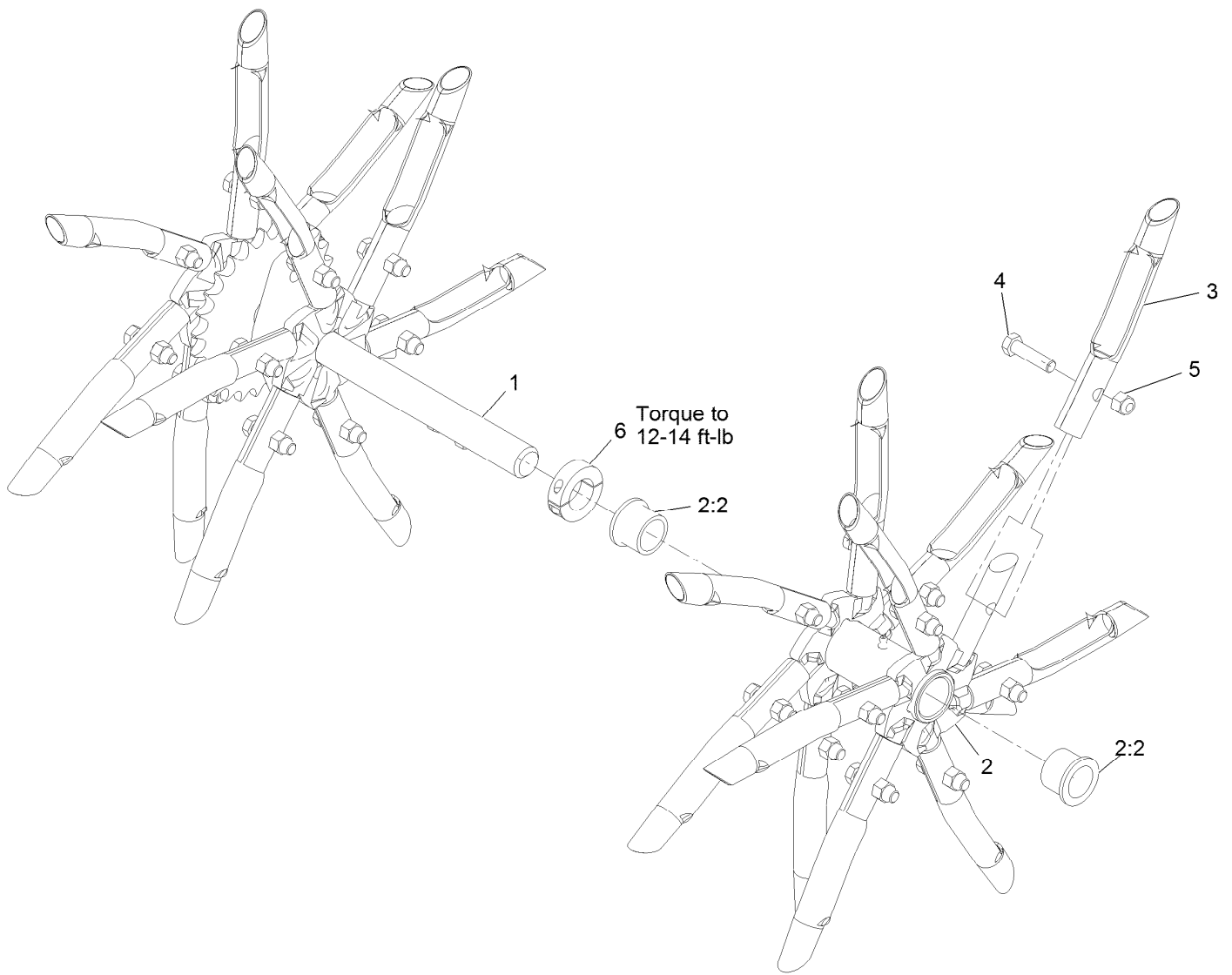
Ref.	Part Number	Qty.	Description
2	110-8906	1	Valve-Solenoid
2:1	110-8908	1	Spool Valve Seal Kit
2:2	110-2634	1	Nut-Coil
3	119-4619	1	Coil-Solenoid
4	116-9397	1	Valve-Relief, Poppet Style
4:1	116-9398	1	Relief Valve Seal Kit
5	116-9396	1	Knob (1.5 Dia)
6	103-2156	4	Adapter-Straight
6:1	1-603921	1	O-Ring-Sae #6
6:2	103-1020	1	O-Ring-37 Flare #6
7	110-2634	1	Nut-Coil
8	116-9716	1	Valve-Relief
8:1	116-9717	1	Kit-Seal F/116-9716
9	116-9718	1	Valve-Check, P O
9:1	116-9719	1	Kit-Seal F/116-9718



## Tine Assembly

<i>Ref.</i>	<i>Part Number</i>	<i>Qty.</i>	<i>Description</i>	<i>Ref.</i>	<i>Part Number</i>	<i>Qty.</i>	<i>Description</i>
1	116-6553-03	1	Trail Arm ASM	11	116-7109	4	Screw-HH ●
2	116-6738	1	RH Tine Wheel ASM	12	3296-48	6	Nut-Nyloc 7/16-14
3	116-6739	1	LH Tine Wheel ASM	13	324-8	2	Screw-HH
4	116-6895	2	Chain-Roller, #50	14	116-6629	1	Shaft
5	116-6897	2	Link-Connecting, #50	15	116-6756	2	Bearing-Pillow Block ●
6	87-7270	2	Washer-Thrust	16	3256-25	4	Washer-7/16 Sae
7	116-6719	2	Sprocket-Idler, 17T	17	324-6	2	Screw-HH 7/16-14 X 1 1/2
8	116-6777	2	Bearing-Flange, 2 Bolt	18	324-7	2	Screw-HH
9	3233-14	2	Screw-CARR	19	116-7327-01	1	Plate-Downstop
10	3296-45	2	Nut-Nyloc 1/2-13 Thin				

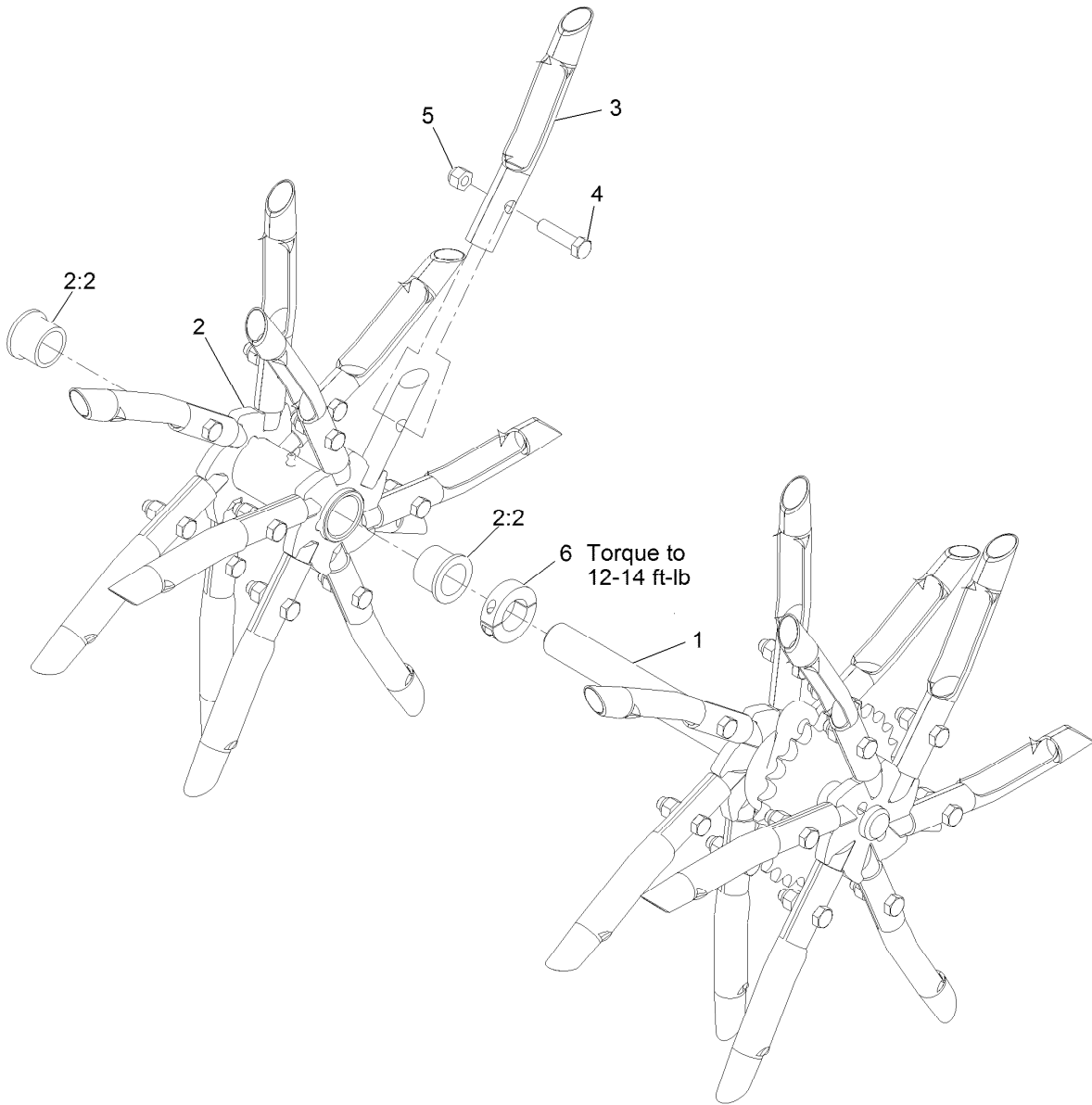
● Use Pro-Lock, Nut Type (P/N 1-840022, .5ml tube) on threads.



## RH Tine Wheel Assembly No. 116-6738

Ref.	Part Number	Qty.	Description
1	116-6727	1	Shaft-Tine, RH
2	116-6731	1	Float Tine Shaft ASM
2:2	94-8949	2	Bushing-Flange
3	126-0262	24	Tine-Coring
4	323-8	24	Screw-HH 3/8-16 X 1 1/2
5	3296-39	24	Nut-Nyloc 3/8-16
6	116-7271	1	Collar-Locking ●

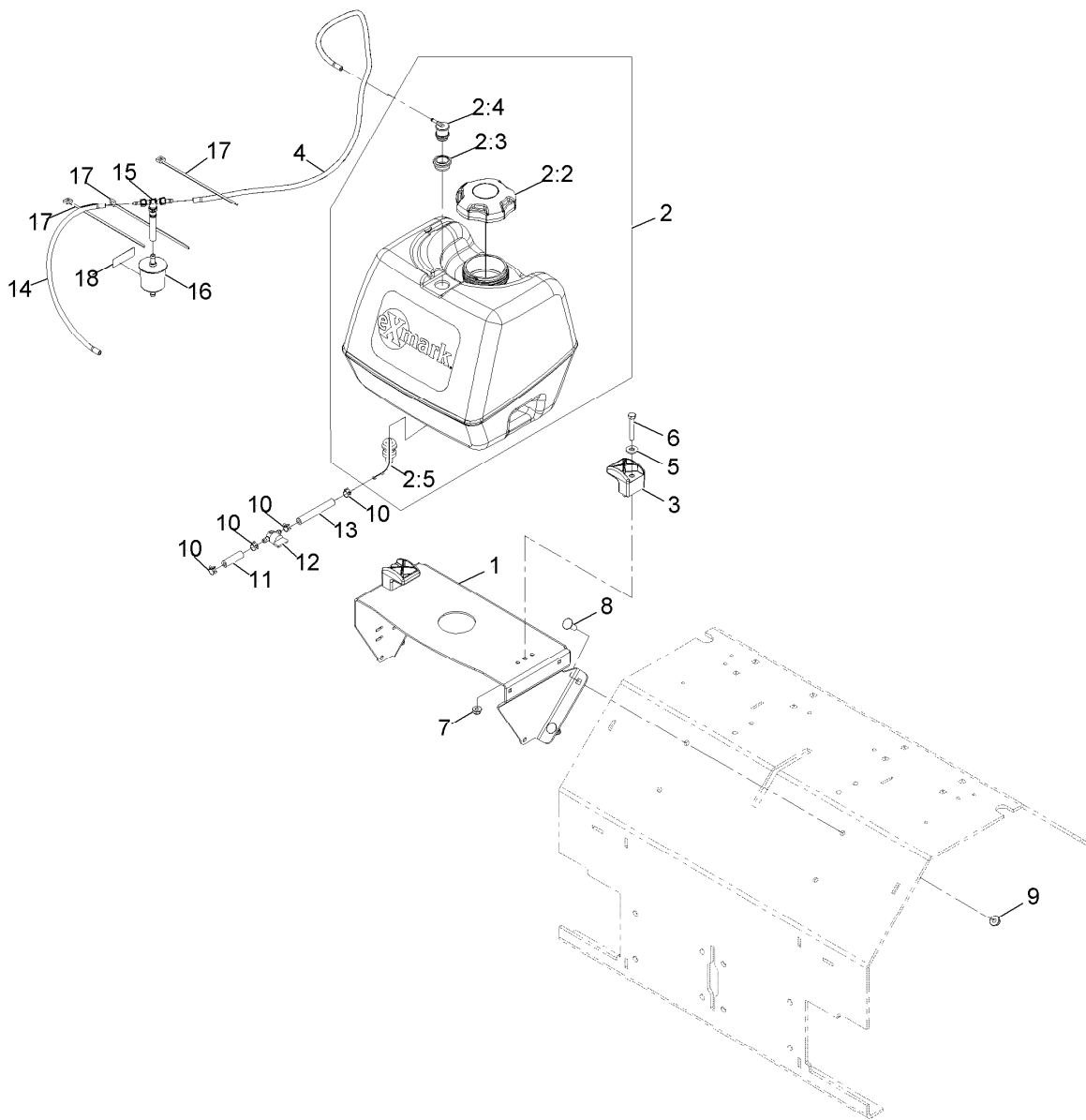
● Use Loctite® 243 on threads.



## LH Tine Wheel Assembly No. 116-6739

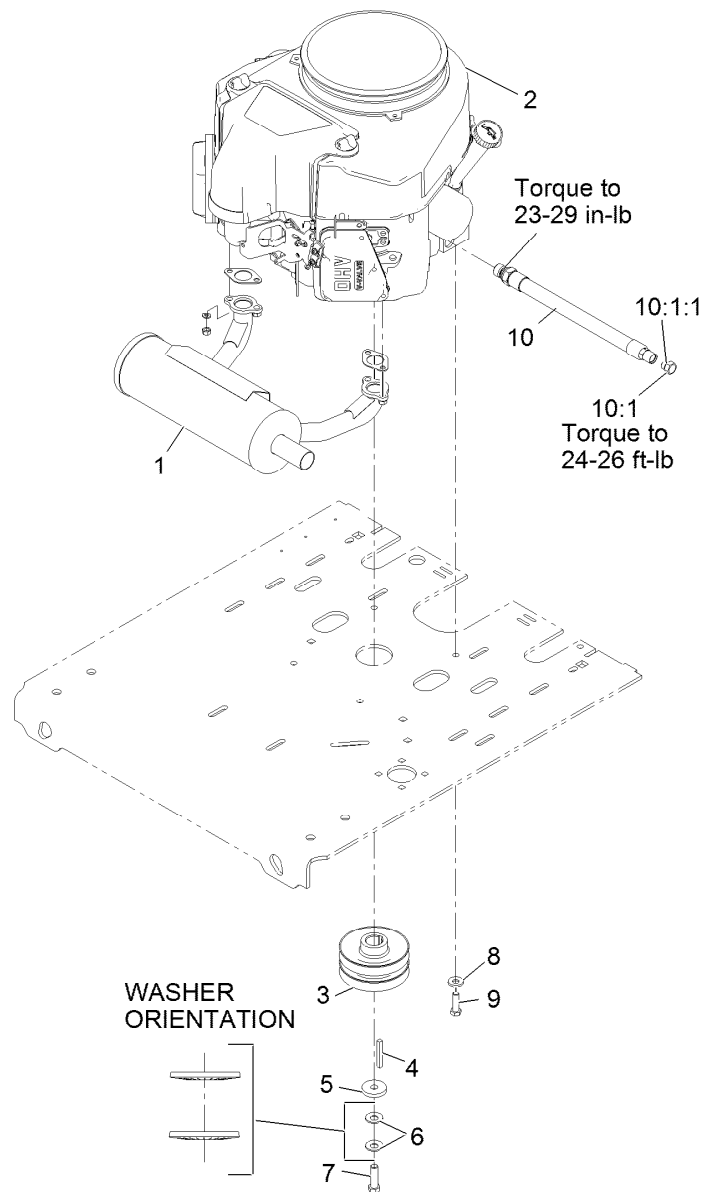
Ref.	Part Number	Qty.	Description
1	116-6728	1	Shaft-Tine, LH
2	116-6731	1	Float Tine Shaft ASM
2:2	94-8949	2	Bushing-Flange
3	126-0262	24	Tine-Coring
4	323-8	24	Screw-HH 3/8-16 X 1 1/2
5	3296-39	24	Nut-Nyloc 3/8-16
6	116-7271	1	Collar-Locking ●

● Use Loctite® 243 on threads.



## Fuel Assembly

Ref.	Part Number	Qty.	Description	Ref.	Part Number	Qty.	Description
1	116-9541-01	1	Support-Tank, Fuel	8	3231-22	4	Bolt-Carriage 3/8-16 X 1
2	116-3656	1	ASM, Fuel Tank	9	104-8301	4	Nut-Nyloc 3/8-16 Flg
2:2	120-5461	1	Cap-Fuel, Ratcheting	10	2412-98	4	Clamp-Hose
2:3	114-0284	1	Grommet	11	119-7856	1	Hose-Fuel
2:4	114-0285	1	Valve-Rollover	12	1-603770	1	Valve-Fuel
2:5	103-2605	1	Fitting-Fuel Bulkhead W/Strainer	13	105-8342	1	Hose-Fuel
3	107-4543	2	Clamp	14	115-7872	1	Hose-Fuel
4	116-4346	1	Hose-Emissions	15	116-5464	1	Tee And Check ASM
5	3256-3	2	Washer-5/16 Std	16	120-2235	1	Filter-Fuel
6	322-10	2	Screw-HH 5/16-18 X 2	17	1-303335	3	Tie-Cable 7 15/16 (Large)
7	104-8300	2	Nut-Nyloc 5/16-18 Flg	18	116-4769	1	Decal-Filter, Emissions



## Engine Assembly

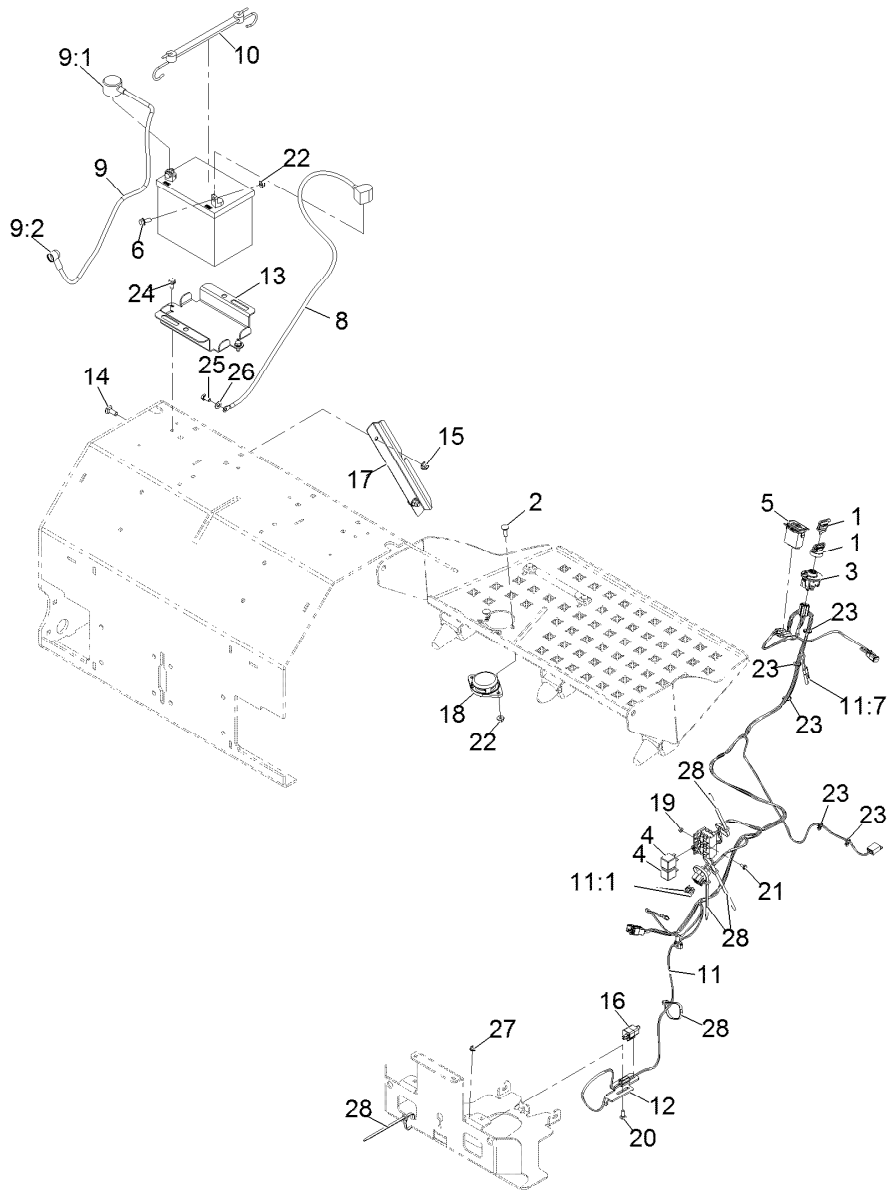
Ref.	Part Number	Qty.	Description
1	116-3735	1	Muffler-Horizontal
2		1	Engine-Kawasaki, Fs481V_s25-R ●■
3	116-9709	1	Pulley
4	103-4177	1	Key
5	1-543610	1	Washer
6	1-603610	2	Washer-Spring Disc 7/16
7	109-9761	1	Screw-HH 7/16-20 X 1 1/2 W/Loctite ◆
8	98-5975	4	Washer-Spring Disc 3/8
9	323-7	4	Screw-HH 3/8-16 X 1 1/4
10	116-4924	1	Asm-Hose Oil Drain W/Plug ▲
10:1	353-508	1	Plug-W/O-Ring
10:1:1	237-42	1	O-Ring

● Not serviced separately

▲ Use a Teflon Pipe Sealant or equivalent on threads.

◆ Use Pro-Lock, Nut Type (P/N 1-840022, .5ml tube) on threads.

■ Obtain parts from [www.kawpowerepc.com](http://www.kawpowerepc.com)



## Electrical Assembly

Ref.	Part Number	Qty.	Description	Ref.	Part Number	Qty.	Description
1	1-603511	1	Key-Ignition	14	3231-2	2	Bolt-Carriage 3/8-16 X 1
1	103-2106	1	Key-Exmark Logo	15	104-8301	2	Nut-Nyloc 3/8-16 Flg
2	3230-2	2	Bolt-Carriage 5/16-18 X 1	16	110-6765	1	Switch-Single Pole No
3	117-2221	1	Switch-Ignition	17	116-9394-03	1	Guard-Harness
4	1-643275	2	Relay-12Vdc 40 Amp	18	92-6282	1	Switch-Seat
5	1-513374	1	Meter-Engine Hours	19	3296-2	2	Nut-Nyloc #10-24
6	3234-5	2	Screw-HH Flg 5/16-18 X 3/4	20	3229-1	1	Bolt-Carriage 1/4-20 X 3/4
8	117-6422	1	Cable-Battery, Black	21	3290-321	2	Screw-HWH
9	109-7630	1	Positive Battery Cable ASM	22	104-8300	4	Nut-Nyloc 5/16-18 Flg
9:1	109-2407	1	Insulator-Battery	23	1-303287	5	Tie-Cable 5 1/2 (Small)
9:2	1-543393	1	Insulator-Solenoid	24	32144-70	2	Screw-HWH 5/16-18 X 3/4 Tf
10	104-2466	1	Holddown-Battery	25	33114-016	1	Screw-HH M8-1.25 X 16Mm
11	116-9382	1	Harness ASM	26	33094-00	1	Washer
11:1	1-816001	2	Fuse-Blade Type, 20 Amp	27	104-7201	1	Nut-Nyloc 1/4-20 Flg
11:7	116-0053	1	Cap-Plug	28	1-303335	5	Tie-Plastic
12	116-7589	1	Mount-Switch				
13	116-9383-03	1	Bracket-Battery				

**Notes:**



**Notes:**

**Notes:**

# EXMARK® MAINTENANCE

## MAXIMIZE THE PERFORMANCE OF YOUR EXMARK.

### **4-CYCLE PREMIUM ENGINE OIL**

Part No. 116-3373

Both SAE 30 and SAE 10W-30 in one bottle.

Contains increased levels of zinc and phosphorus for better lubricity.

No Viscosity Index Improvers that tend to shear down in high heat.

Synthetic formulation.

Gas & Diesel compatible.

Anti-corrosion additives.

API 'SL' and JASO rated with wet clutch compatibility for other machines.

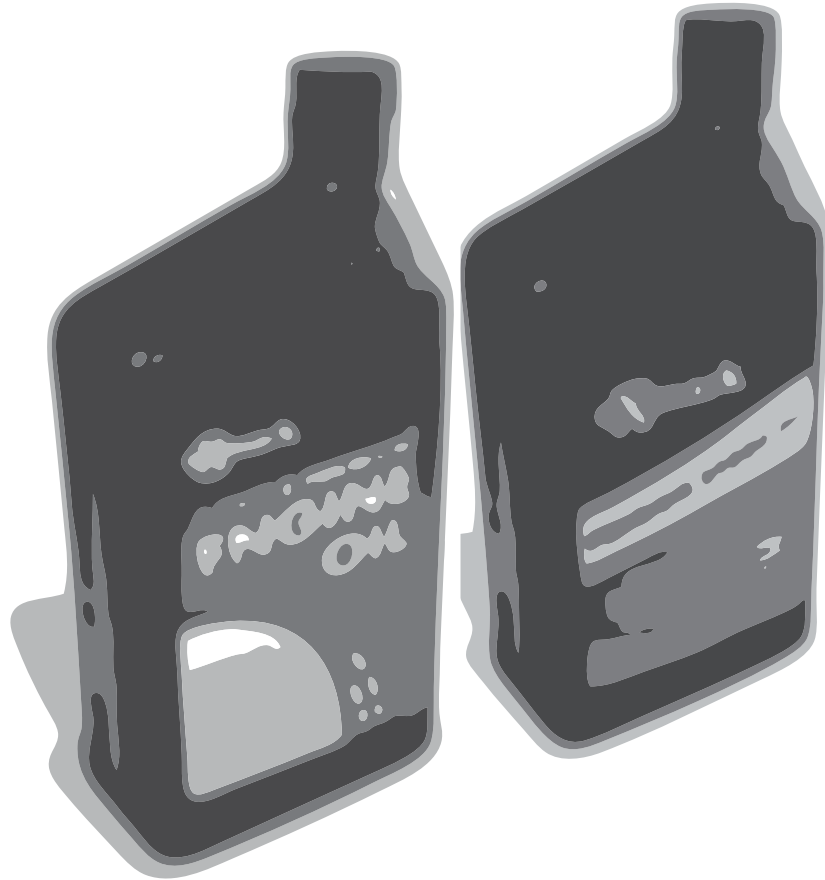
### **PREMIUM HYDRO OIL**

Part No. 109-9828

Commercial quality for tough, high-heat conditions.

Designed specifically for zero-turn mower hydraulic systems.

Superior shear resistance under heavy loads.



Available from your local Exmark dealer. Find your closest dealer at [exmark.com](http://exmark.com)

## EXMARK ACCESSORIES AND OPTIONS\*

### MID-MOUNT RIDING ACCESSORIES AND OPTIONS

CUSTOM RIDE SEAT SUSPENSION SYSTEM	OPERATOR CONTROLLED DISCHARGE
FULL SUSPENSION SEAT	SUN SHADE
DECK LIFT ASSIST KIT	TRASH CONTAINER
HITCH KIT	TURF STRIPER
LIGHT KIT	ULTRA VAC COLLECTION SYSTEM
12V POWER PORT	ULTRA VAC QUICK DISPOSAL SYSTEM
MICRO-MULCH SYSTEM	

### OUT-FRONT RIDING ACCESSORIES AND OPTIONS

CUSTOM RIDE SEAT SUSPENSION SYSTEM	SNOW BLADE
DUAL-TAIL WHEEL	SNOWBLOWER
FLOOR PAN EXTENDER	SUN SHADE
HITCH KIT	TRASH CONTAINER
LIGHT KIT	ULTRA VAC COLLECTION SYSTEM
MICRO-MULCH SYSTEM	ULTRA VAC QUICK DISPOSAL SYSTEM
ROLL OVER PROTECTION SYSTEM (ROPS)	WEATHER CAB

### WALK-BEHIND ACCESSORIES AND OPTIONS

GRASS CATCHER	TURF STRIPER
MICRO-MULCH SYSTEM	STANDON

\*Some accessories and options not available for some models.

Place Model No. and Serial No.  
Label Here (Included in the Literature  
Pack) or Fill in Below

Model No. \_\_\_\_\_

Serial No. \_\_\_\_\_

Date Purchased \_\_\_\_\_

Engine Model No. and Spec. No. \_\_\_\_\_

Engine Serial No. (E/No) \_\_\_\_\_

© 2013 Exmark Mfg. Co., Inc.  
Industrial Park Box 808  
Beatrice, NE 68310  
All Rights Reserved

Part No. 4501-566 Rev. B  
(402) 223-6300  
Fax (402) 223-5489  
Printed in the USA.

