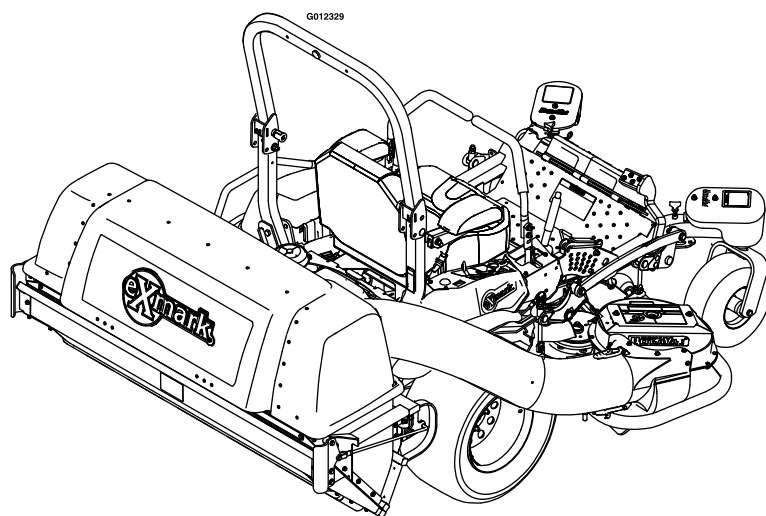




# LZUVQD11

Model No. LZUVQD11—Serial No. 31500000 and Up

Picture below may not reflect actual product.



# Parts Manual

Part No. 4502-211 Rev. A

# Ordering Replacement Parts

To order replacement parts, please supply the part number, the quantity, and the description of each part desired.

## Understanding Reference Numbers

Each identified part in an illustration has a reference number. The reference number for a part also appears in the parts list, along with other information about the part.

This catalog uses two special reference number formats, one to indicate parts in a service assembly and another to indicate the quantity of a given part in an illustration.

## Service Assembly Reference Numbers

Parts in service assemblies have reference numbers in the form a:b. The a represents the reference number of the entire service assembly and the b represents a sequential number unique to each part within the service assembly.

For example, a wheel assembly might be identified by reference number 6, the tire by 6:1, the valve by 6:2, and the wheel by 6:3. When you order the assembly identified by reference number 6, you receive all parts identified by reference numbers 6:1, 6:2, and 6:3. However, you may also order any part individually. Reference numbers of this type appear in illustration and in parts lists.

## Reference Numbers Indicating Quantity

In an illustration, if a reference number indicates more than one part, the reference number has the form nX y. The n represents the quantity of the part, the X is the multiplication symbol, and the y represents the reference number.

For example, in an illustration, the reference number 2X 37 means that two of the parts identified by reference number 37 are indicated.

# List of Abbreviations

<b>AR:</b> as required	<b>HLH:</b> hex lag head	<b>PTH:</b> phillips truss head
<b>ASM:</b> assembly	<b>HOC:</b> height-of-cut	<b>PTO:</b> power-take-off
<b>BBC:</b> blade brake control	<b>HP:</b> high pressure	<b>RH:</b> right hand
<b>BHTF:</b> button head thread forming	<b>HSBH:</b> hex socket button head	<b>ROPS:</b> roll-over protection system
<b>CARR:</b> carriage	<b>HSFH:</b> hex socket flat head	<b>RRB:</b> rear roller brush
<b>CCW:</b> counter clockwise	<b>HSH:</b> hex socket head	<b>SFH:</b> slotted fillister head
<b>CW:</b> clockwise	<b>HWH:</b> hex washer head	<b>SHH:</b> slotted hex head
<b>DEG:</b> degrees	<b>HWHTF:</b> hex washer head thread forming	<b>SHWH:</b> slotted hex washer head
<b>DPA:</b> Dual Point Adjustment	<b>HYD:</b> hydraulic	<b>SPH:</b> slotted pan head
<b>ECM:</b> electronic control module	<b>LH:</b> left hand	<b>SQH:</b> square head
<b>EXT:</b> external	<b>LP:</b> low pressure	<b>SRH:</b> slotted round head
<b>FH:</b> flat head	<b>LPG:</b> Liquefied Petroleum Gas	<b>STD:</b> standard
<b>GA:</b> gauge	<b>NI:</b> nylon insert	<b>TAP:</b> self tapping
<b>HD:</b> heavy-duty	<b>NPTF:</b> national pipe thread fine	<b>TTH:</b> torx truss head
<b>HF:</b> hex flange	<b>PFH:</b> phillips flat head	
<b>HH:</b> hex head	<b>PPH:</b> phillips pan head	
<b>HHF:</b> hex head flange	<b>PPHTF:</b> phillips pan head thread forming	
<b>HHFTF:</b> hex head flange thread forming	<b>PRH:</b> phillips round head	
<b>HJ:</b> hex jam		

# Touch Up Paint

Exmark black touch up spray paint – gloss black.

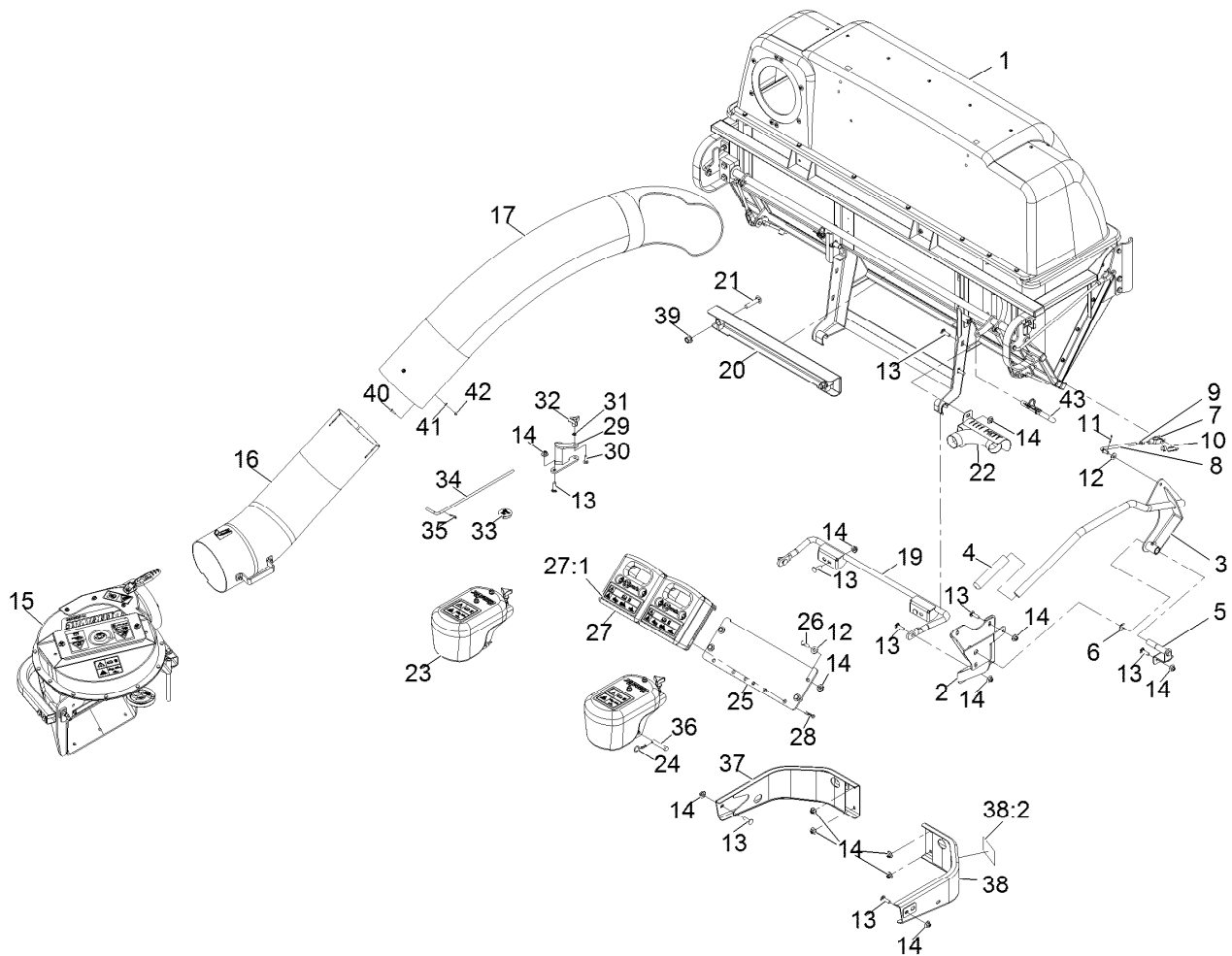
Exmark red touch up paint (spray paint – P/N 1-850337 - .6 oz liquid bottle – P/N 103-9140).



If your Exmark dealer does not have the Exmark part in stock, Exmark will get the parts to the dealer the next business day or the part will be FREE Guaranteed!! (Some restrictions apply. See your participating Exmark Dealer for details.)

## Contents

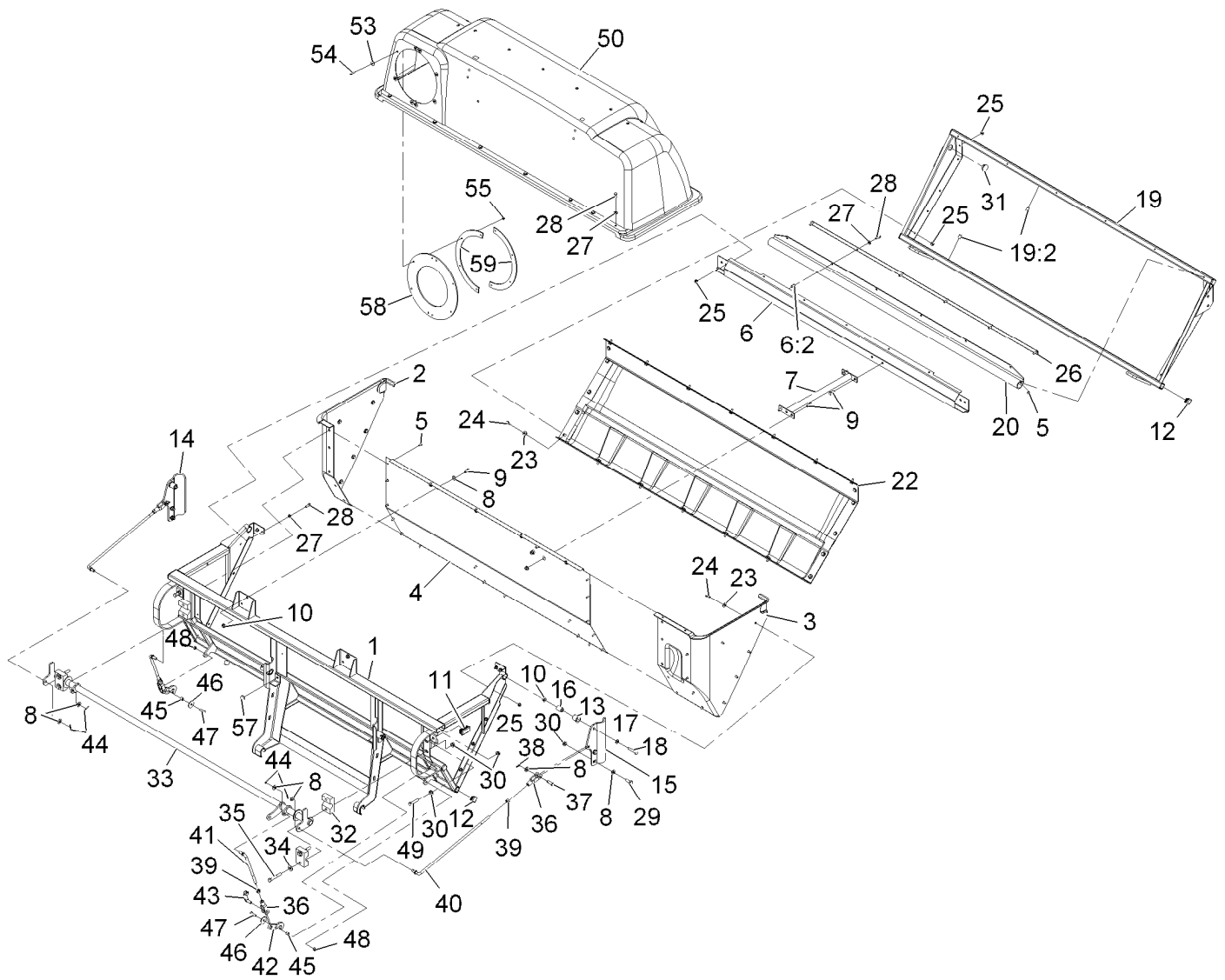
LZUVQD11 Assembly .....	4
Hopper Assembly No. 109-6142 .....	5
Hood Assembly No. 109-7301 .....	7
Idler Assembly No. 103-0459 .....	8
Lower Tube Assembly No. 109-1973 .....	9
Caster Weight Assembly No. 109-8461 .....	10
Completing Kit No. 109-9626 .....	11
Completing Kit No. 109-9627 .....	12
Completing Kit No. 109-9628 .....	13
Completing Kit No. 109-9629 .....	14
Completing Kit No. 116-2086 .....	15
Completing Kit No. 116-2087 .....	16



## LZUVQD11 Assembly

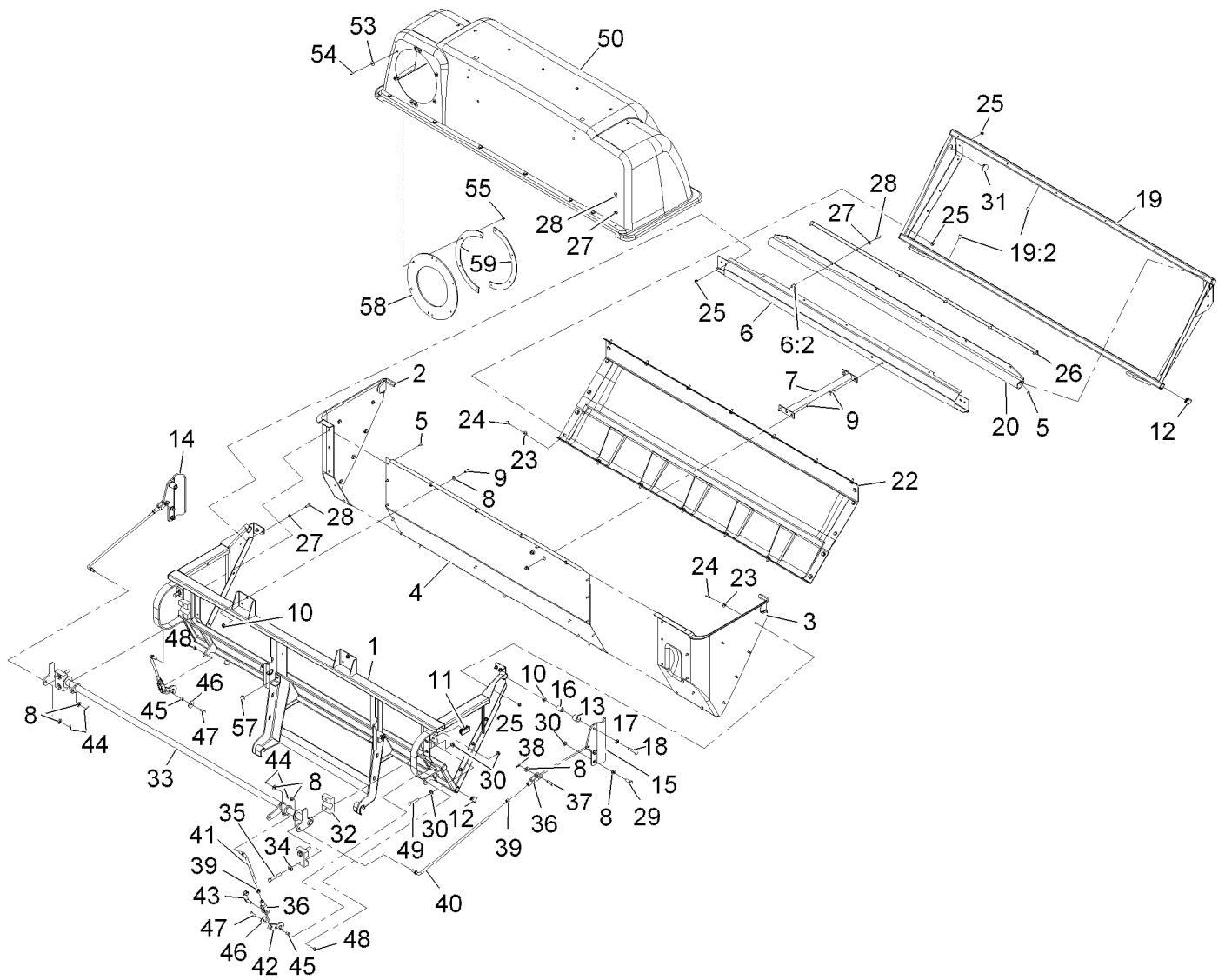
Ref.	Part Number	Qty.	Description	Ref.	Part Number	Qty.	Description
1		1	ASM,Hopper Lg Qds ●	24	1-806005	2	Hairpin-Cotter
2	109-8712-03	1	Mount-Pivot	25	103-6368-01	1	Plate, Weight Mounting
3	109-9369-03	1	Wld,Dump Handle	26	323-7	4	Screw-HH 3/8-16 X 1 1/4
4	103-7115	1	Handle-Grip	27	103-6363	2	Asm, Weight (103-6364-01) W/Decals
5	109-6869	1	Pin-Handle	27:1	126-4661	1	Decal-Warning Weight
6	32151-48	1	E-Ring	28	9335124	4	Hairpin-Cotter
7	1-633131	1	Yoke-Linkage, Brake	29	109-9463-03	1	Bracket,Belt Cover
8	103-2413	1	Link-Handle	30	3230-2	1	Bolt-Carriage 5/16-18 X 1
9	3219-3	1	Nut-Hex 3/8-24	31	109-5667	1	Ring-Bolt Retaining
10	103-2399	1	Pin-Clevis Spring 3/8	32	1-323385	1	Knob-3 Prong
11	3272-10	1	Pin-Cotter 1/8 X 3/4	33	103-1279	1	Plug
12	3256-4	5	Washer-3/8 Std	34	109-3458	1	Pin, Chute Pivot
13	3231-28	12	Bolt-Carriage 3/8-16 X 1 1/4	35	1-806003	1	Hairpin-Cotter
14	109-6658	20	Nut-Nyloc 3/8-16 Flg	36	92-2743	2	Pin-Clevis
15	109-9836	1	ASM, Blower Large - Svc Only	37	116-0057-03	1	Bumper-RH
16	109-1973	1	Lower Tube ASM	38	116-0180	1	LH Bumper ASM
17	109-1968	1	Tube-Upper	38:2	106-5517	1	Decal-Warning, Hot Surface
19	109-9248	1	Mount-Bagger, Lower	39	99-5107	2	Nut-Lock 1/2-13
20	116-0473-03	1	Mount-Bagger, Upper	40	32105-13	3	Screw-HWH #10-24 X 3/4
21	3233-34	2	Bolt-Carriage 1/2-13 X 2 1/2	41	3256-14	3	Washer-#10 Std
22	116-2804	1	Exhaust Diverter ASM	42	3296-2	3	Nut-Nyloc #10-24
23	109-8461	2	ASM,Caster Weight	43	116-0458	2	Bagger Mount Pin ASM

● Not serviced separately



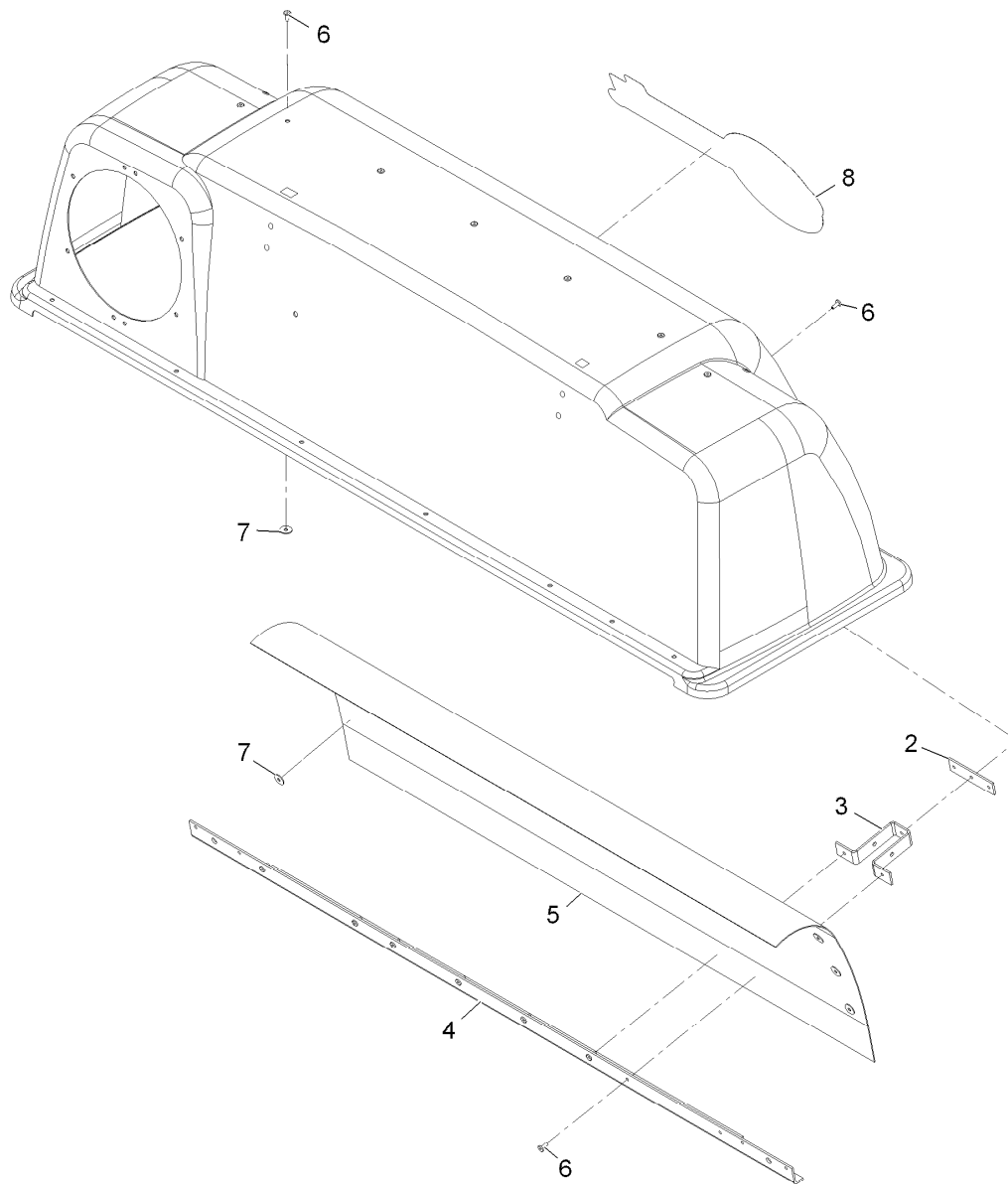
## Hopper Assembly No. 109-6142

Ref.	Part Number	Qty.	Description	Ref.	Part Number	Qty.	Description
1	109-8709-03	1	Frame	20	103-2360	1	Seal-Door Hinge
2	103-7827	1	Panel-Bagger, RH	22	103-2383	1	Bag And Bottom Panel ASM
3	103-7826	1	Panel, Bagger LH	23	3256-2	32	Washer-1/4 Std
4	103-2404-03	1	Sheet, Wall	24	321-3	32	Screw-HH 1/4-20 X 5/8
5	114439	27	Rivet	25	32128-33	36	Nut-Whizlock 1/4-20
6	103-2710	1	Rear Crossmember ASM	26	103-3010-03	1	Strap-Hold Down
6:2	32148-6	6	Insert-Nut	27	3256-22	22	Washer-1/4 Sae
7	103-2414-03	1	Support	28	321-4	22	Screw-HH 1/4-20 X 3/4
8	3256-24	12	Washer-3/8 Sae	29	323-6	4	Screw-HH 3/8-16 X 1
9	322-3	6	Screw-HH 5/16-18 X 3/4	30	3290-357	12	Nut-Whizlock 3/8-16
10	32128-20	8	Nut-Whizlock 5/16-18	31	103-8018	2	Plug-Dome
11	103-3201	2	Cap	32	103-2409	4	Half-Block, Bearing
12	103-3202	8	Cap	33	103-2412-03	1	Link-Intermediate
13	103-2377	2	Bushing	34	3256-4	4	Washer-3/8 Std
14	103-3331-03	1	Arm-Hinge, RH	35	323-12	4	Screw-HH 3/8-16 X 2 1/2
15	103-3332-03	1	Arm, Hinge LH	36	1-633131	4	Yoke-Linkage, Brake
16	103-2361	2	Pin-Pivot, Hinge	37	1-808285	2	Pin-Clevis 3/8 X 1 1/8
17	3256-23	2	Washer-5/16 Sae	38	1-806003	2	Hairpin-Cotter
18	322-9	2	Screw-HH 5/16-18 X 1 3/4	39	3219-3	4	Nut-Hex 3/8-24
19	103-2737	1	Door ASM	40	103-2365	2	Link-Hinge
19:2	32148-6	12	Insert-Nut	41	103-2413	2	Link-Handle



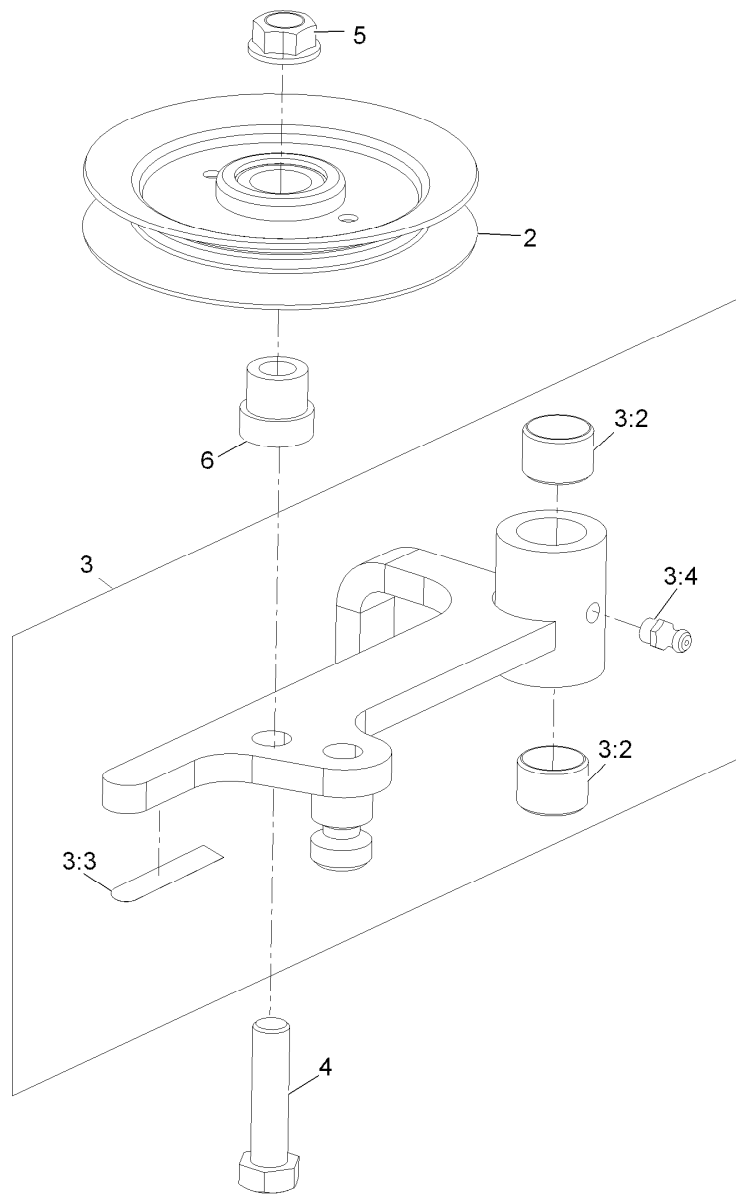
## Hopper Assembly No. 109-6142 (continued)

<i>Ref.</i>	<i>Part Number</i>	<i>Qty.</i>	<i>Description</i>	<i>Ref.</i>	<i>Part Number</i>	<i>Qty.</i>	<i>Description</i>
42	103-3191-03	2	Latch	50	109-7301	1	ASM,Hood Dump
43	103-2399	2	Pin-Clevis Spring 3/8	53	3256-61	8	Washer
44	3272-10	4	Pin-Cotter 1/8 X 3/4	54	3250-27	8	Screw-PPH #10-24 X 7/8
45	1-633545	2	Spacer	55	3296-2	8	Nut-Nyloc #10-24
46	3256-55	2	Washer	57	1-513658	2	Bumper
47	321-6	2	Screw-HH 1/4-20 X 1	58	103-0439	1	Seal-Tube
48	3296-42	2	Nut-Nyloc 1/4-20	59	103-0378	2	Clamp-Seal
49	323-53	2	Screw-HH 3/8-16 X 1 3/4				



## Hood Assembly No. 109-7301

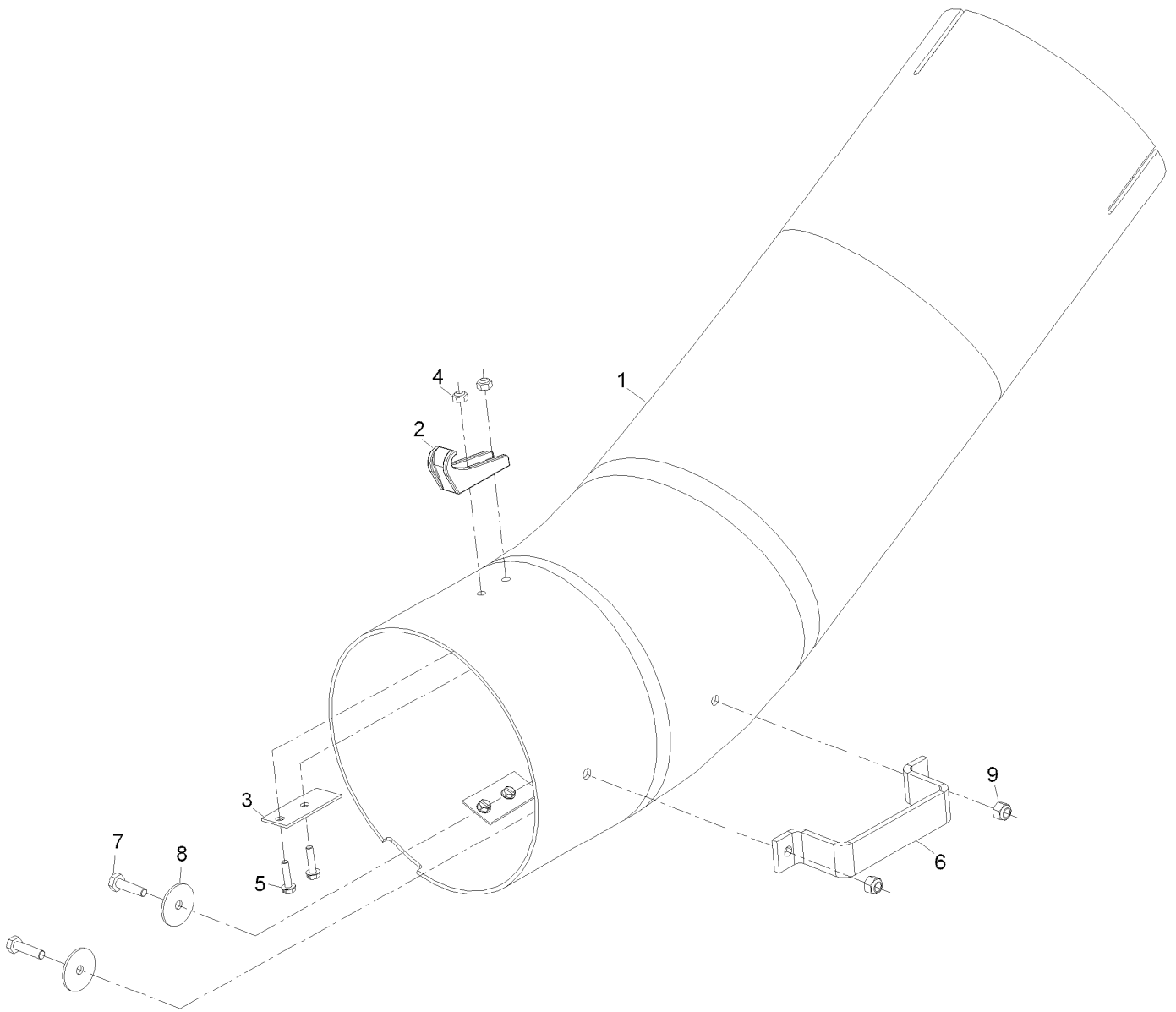
<i>Ref.</i>	<i>Part Number</i>	<i>Qty.</i>	<i>Description</i>
2	103-0376	2	Plate-Latch, Reinforcement
3	103-0379	2	Bracket-Mount
4	103-2662-03	1	Support-Screen
5	103-0440	1	Screen-Bagger
6	114439	33	Rivet
7	3256-61	15	Washer
8	103-0438	1	Decal, Exmark 60 And 72



## Idler Assembly No. 103-0459

<i>Ref.</i>	<i>Part Number</i>	<i>Qty.</i>	<i>Description</i>
2	103-0483	1	Idler, Flat
3	103-0448	1	Idler Assy With Bushings
3:2	1-653600	2	Bearing
3:3	1-653558	1	Decal-Warning
3:4	302-19	1	Zerk-1/4-28 Str
4	323-8	1	Screw-HH 3/8-16 X 1 1/2
5	3290-357	1	Nut-Whizlock 3/8-16
6	1-653367	1	Hub, Spacer

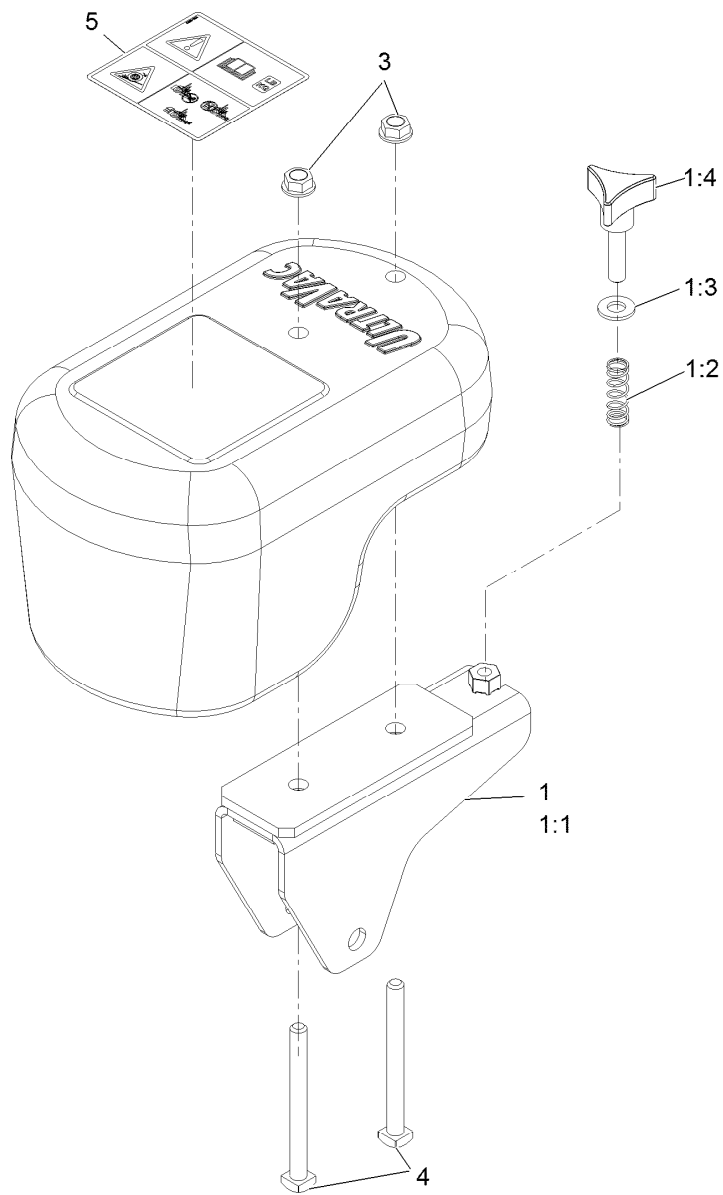




## Lower Tube Assembly No. 109-1973

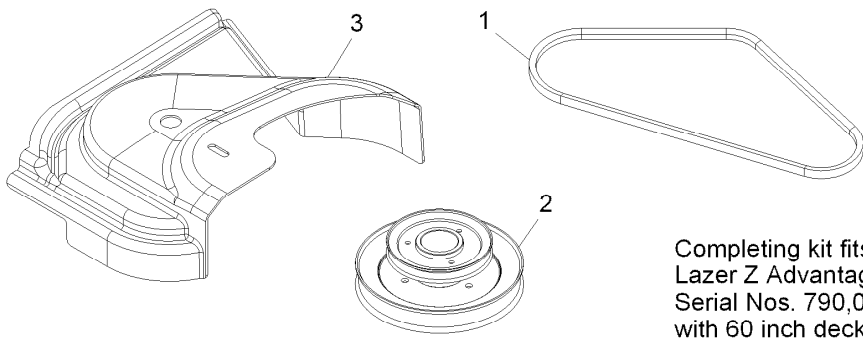
Ref.	Part Number	Qty.	Description
1	1-353005-03	1	Handle
2	103-2897	2	Latch-Catch ●
3	103-3079	2	Plate-Backing
4	109-1974	1	Tube, Lower
5	321-6	2	Screw-HH 1/4-20 X 1
6	3256-55	2	Washer
7	3296-2	4	Nut-Nyloc #10-24
8	3296-42	2	Nut-Nyloc 1/4-20
9	32105-13	4	Screw-HWH #10-24 X 3/4

● Kit No. 103-4143 - Contains catch, rubber latch, and mounting hardware

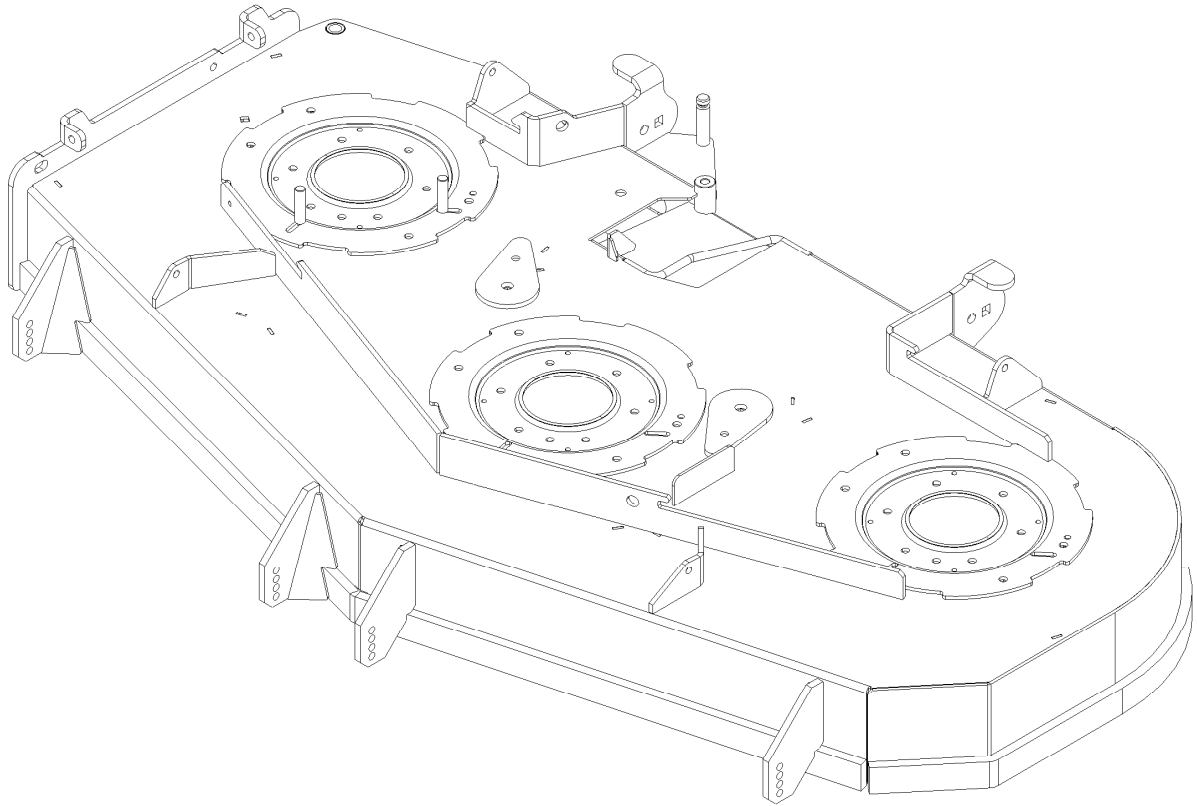


## Caster Weight Assembly No. 109-8461

<i>Ref.</i>	<i>Part Number</i>	<i>Qty.</i>	<i>Description</i>
1	109-8460	1	ASM,Caster Weight Bracket
1:1	109-7711-01	1	Wld,Caster Weight Bracket
1:2	103-2188	1	Spring
1:3	3256-24	1	Washer-3/8 Sae
1:4	103-2187	1	Knob
3	3290-357	2	Nut-Whizlock 3/8-16
4	103-2189	2	Bolt-Square Hd 3/8-16 X 4
5	126-4662	1	Decal-Warning Traction

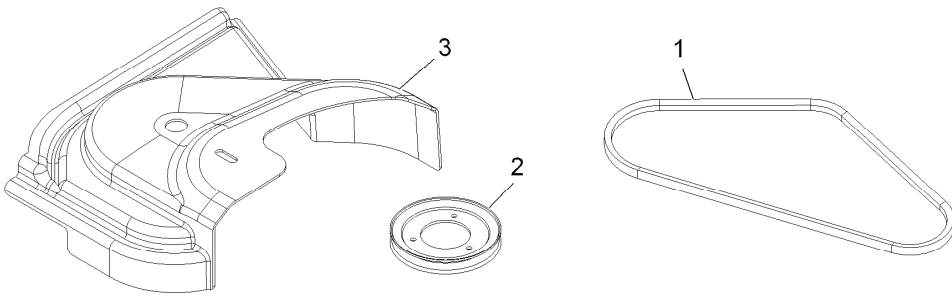


Completing kit fits all  
 Lazer Z Advantage Series (LZAS)  
 Serial Nos. 790,000-919,999  
 with 60 inch decks

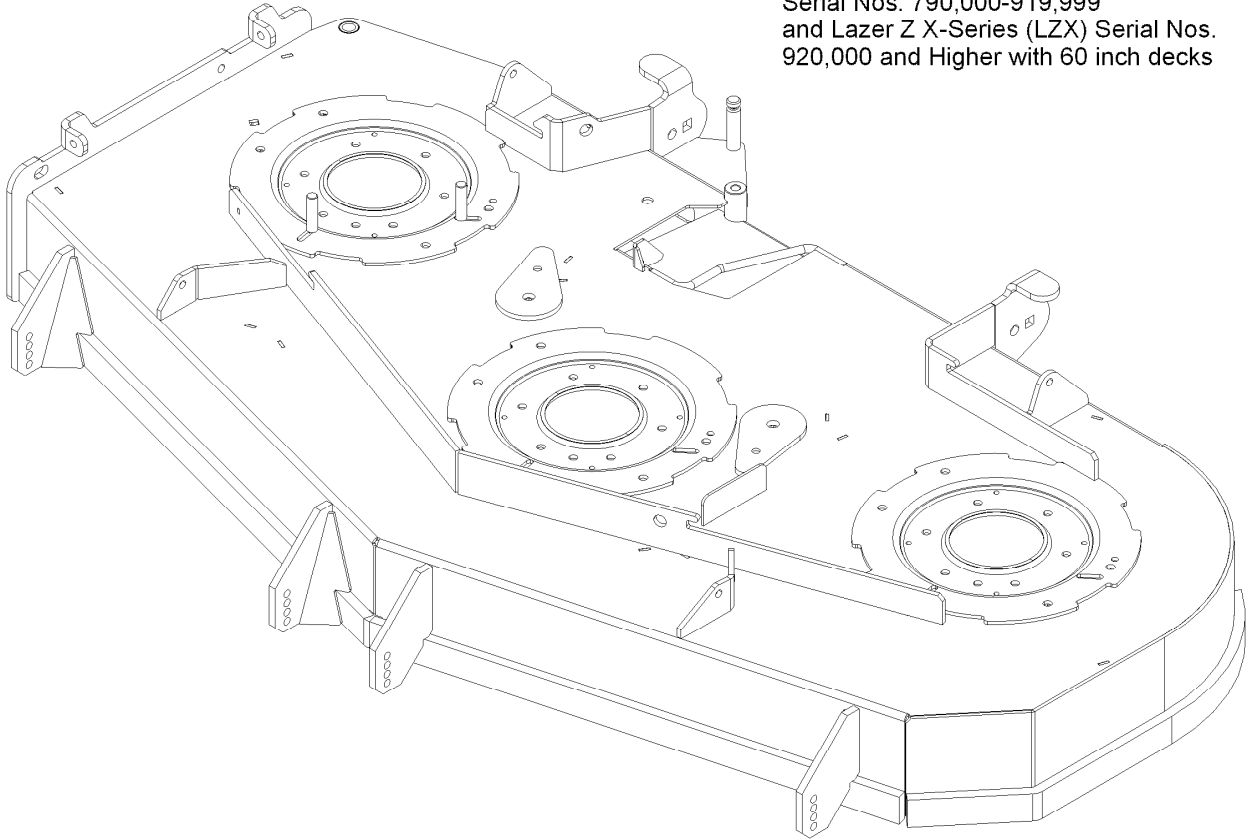


## Completing Kit No. 109-9626

<i>Ref.</i>	<i>Part Number</i>	<i>Qty.</i>	<i>Description</i>
1	103-0866	1	Belt, Blower Drive 60
2	109-9634	1	Jackshaft,Uv Drive 604
3	109-9381	1	Cover,Belt Uv 60

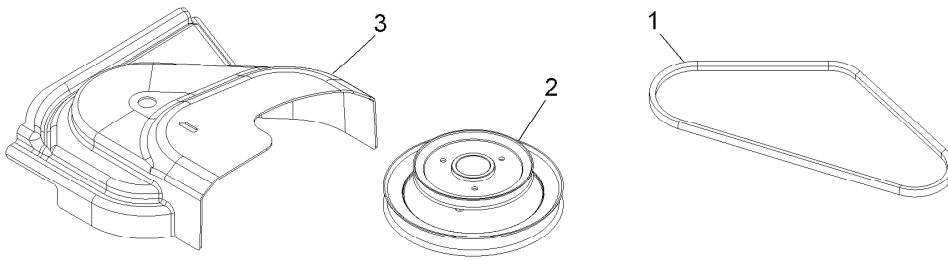


Completing kit fits all Lazer Z (LZZ)  
 Serial Nos. 790,000-919,999  
 and Lazer Z X-Series (LZX) Serial Nos.  
 920,000 and Higher with 60 inch decks

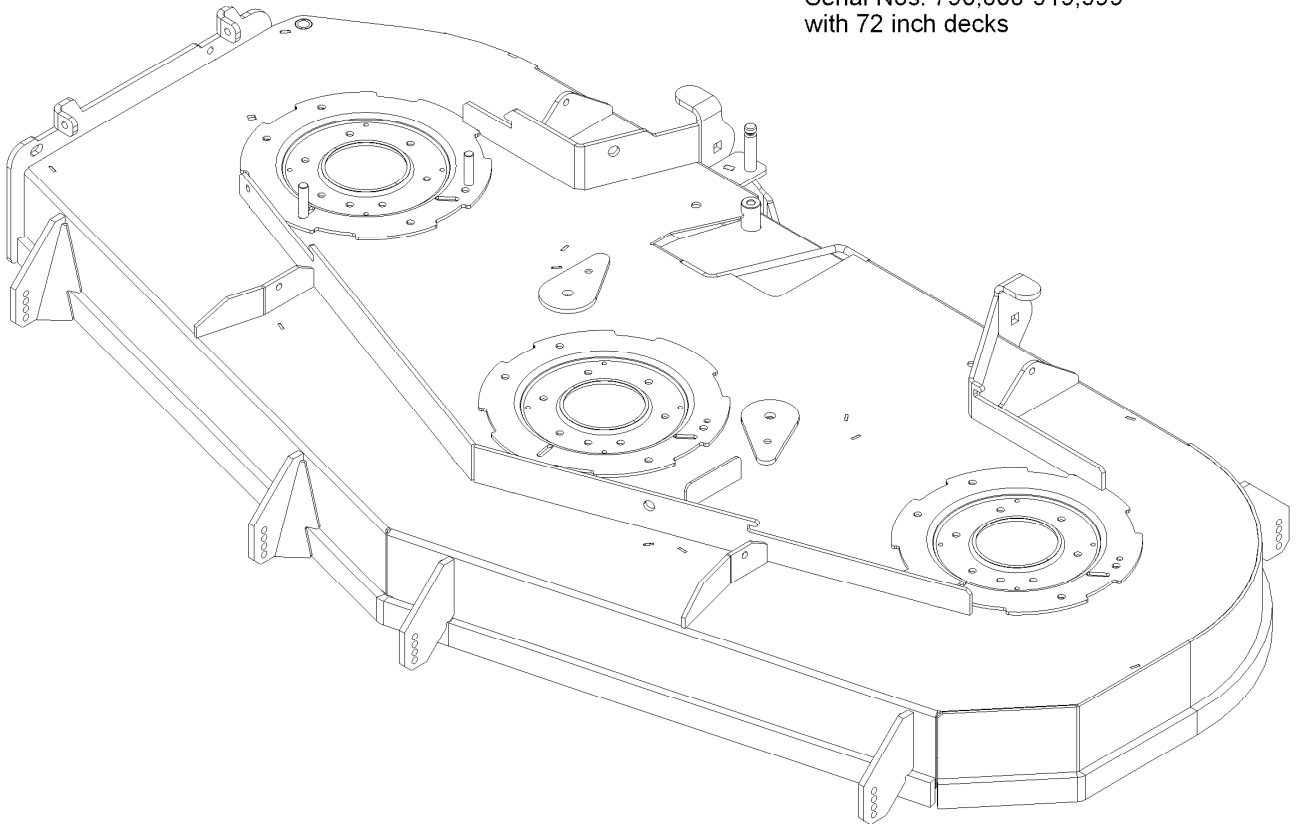


## Completing Kit No. 109-9627

<i>Ref.</i>	<i>Part Number</i>	<i>Qty.</i>	<i>Description</i>
1	103-0866	1	Belt, Blower Drive 60
2	109-9635	1	Sheave, Drive Lzuv 606
3	109-9381	1	Cover, Belt Uv 60

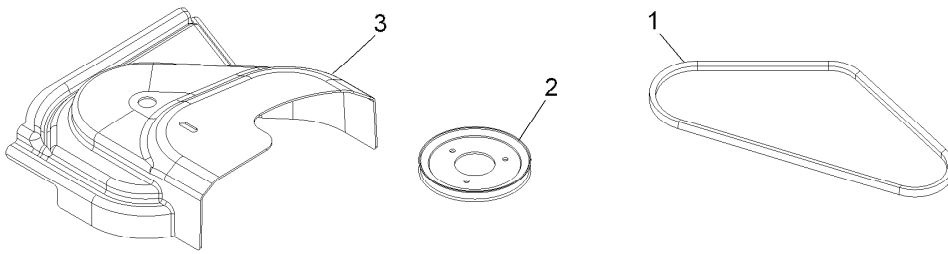


Completing kit fits all  
 Lazer Z Advantage Series (LZAS)  
 Serial Nos. 790,000-919,999  
 with 72 inch decks

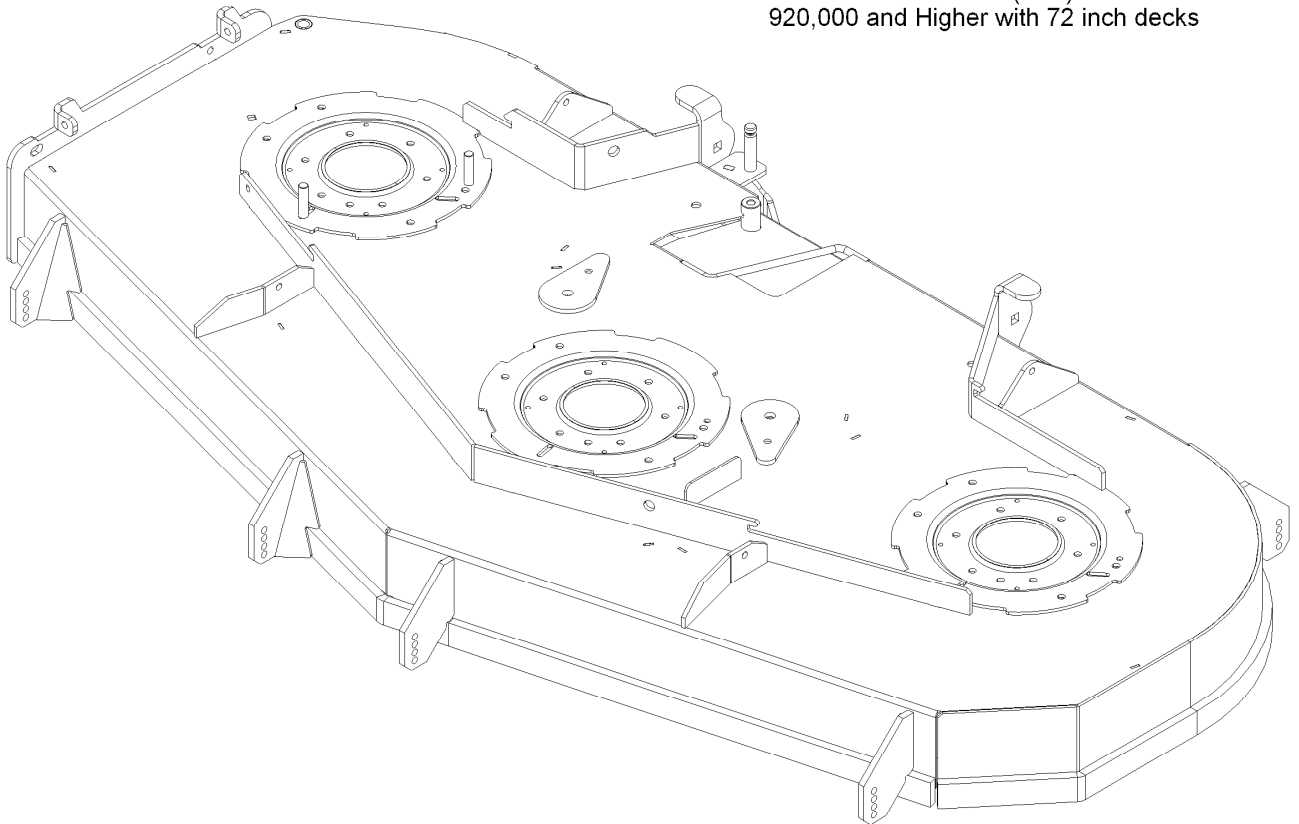


## Completing Kit No. 109-9628

<i>Ref.</i>	<i>Part Number</i>	<i>Qty.</i>	<i>Description</i>
1	103-0867	1	Belt, Blower Drive 72
2	109-9636	1	Jackshaft,Uv Drive 724
3	109-8473	1	Cover,Belt Uv 72

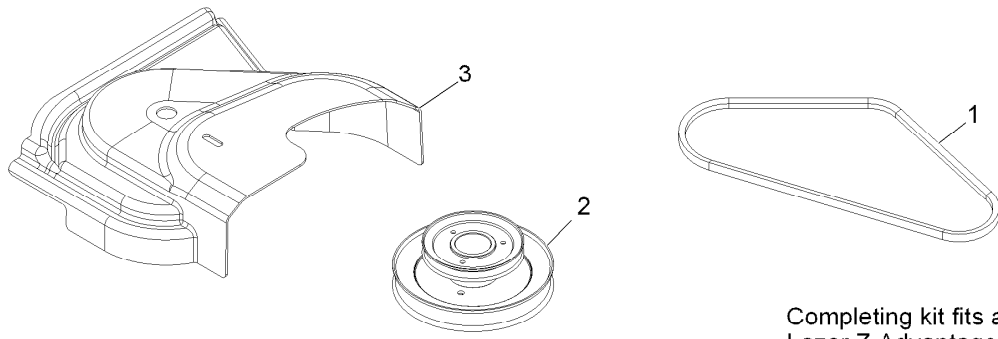


Completing kit fits all Lazer Z (LZZ)  
 Serial Nos. 790,000-919,999  
 and Lazer Z X-Series (LZX) Serial Nos.  
 920,000 and Higher with 72 inch decks

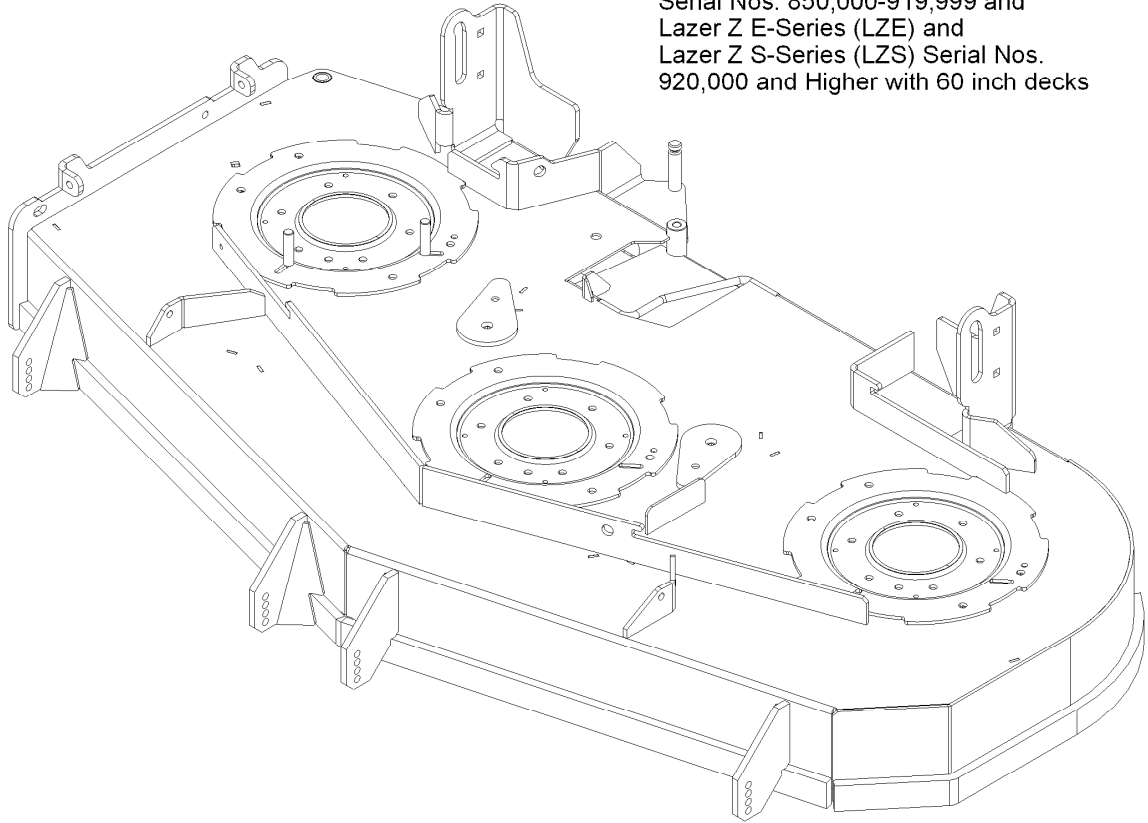


## Completing Kit No. 109-9629

<i>Ref.</i>	<i>Part Number</i>	<i>Qty.</i>	<i>Description</i>
1	103-0867	1	Belt, Blower Drive 72
2	109-9637	1	Sheave, Drive Lzuv 726
3	109-8473	1	Cover, Belt Uv 72

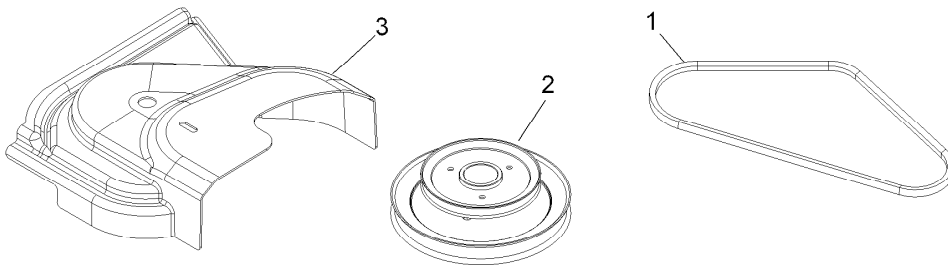


Completing kit fits all  
 Lazer Z Advantage Series (LZA)  
 Serial Nos. 850,000-919,999 and  
 Lazer Z E-Series (LZE) and  
 Lazer Z S-Series (LZS) Serial Nos.  
 920,000 and Higher with 60 inch decks

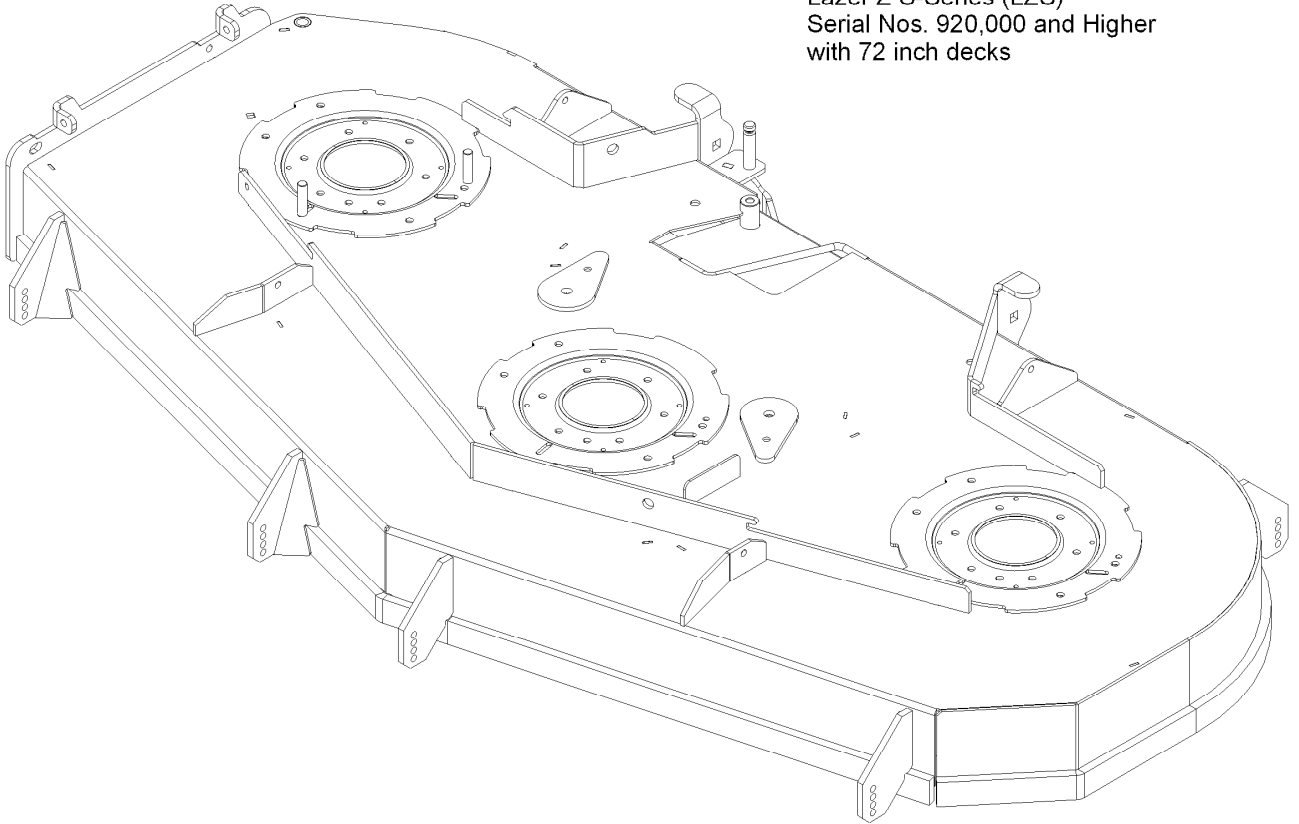


## Completing Kit No. 116-2086

<i>Ref.</i>	<i>Part Number</i>	<i>Qty.</i>	<i>Description</i>
1	103-0866	1	Belt, Blower Drive 60
2	116-2090	1	Jackshaft,Uv Drive 604 Splined
3	109-9381	1	Cover,Belt Uv 60



Completing kit fits all  
Lazer Z S-Series (LZS)  
Serial Nos. 920,000 and Higher  
with 72 inch decks



## Completing Kit No. 116-2087

<i>Ref.</i>	<i>Part Number</i>	<i>Qty.</i>	<i>Description</i>
1	103-0867	1	Belt, Blower Drive 72
2	116-2091	1	Jackshaft,Uv Drive 724 Splined
3	109-8473	1	Cover,Belt Uv 72



**Notes:**

**Notes:**

**Notes:**

## EXMARK ACCESSORIES AND OPTIONS\*

### MID-MOUNT RIDING ACCESSORIES AND OPTIONS

CUSTOM RIDE SEAT SUSPENSION SYSTEM	OPERATOR CONTROLLED DISCHARGE
FULL SUSPENSION SEAT	SUN SHADE
DECK LIFT ASSIST KIT	TRASH CONTAINER
HITCH KIT	TURF STRIPER
LIGHT KIT	ULTRA VAC COLLECTION SYSTEM
12V POWER PORT	ULTRA VAC QUICK DISPOSAL SYSTEM
MICRO-MULCH SYSTEM	

### OUT-FRONT RIDING ACCESSORIES AND OPTIONS

CUSTOM RIDE SEAT SUSPENSION SYSTEM	SNOW BLADE
DUAL-TAIL WHEEL	SNOWBLOWER
FLOOR PAN EXTENDER	SUN SHADE
HITCH KIT	TRASH CONTAINER
LIGHT KIT	ULTRA VAC COLLECTION SYSTEM
MICRO-MULCH SYSTEM	ULTRA VAC QUICK DISPOSAL SYSTEM
ROLL OVER PROTECTION SYSTEM (ROPS)	WEATHER CAB

### WALK-BEHIND ACCESSORIES AND OPTIONS

GRASS CATCHER	TURF STRIPER
MICRO-MULCH SYSTEM	STANDON

\*Some accessories and options not available for some models.

Place Model No. and Serial No.  
Label Here (Included in the Literature  
Pack) or Fill in Below

Model No. \_\_\_\_\_

Serial No. \_\_\_\_\_

Date Purchased \_\_\_\_\_

Engine Model No. and Spec. No. \_\_\_\_\_

Engine Serial No. (E/No) \_\_\_\_\_

© 2015 Exmark Mfg. Co., Inc.  
Industrial Park Box 808  
Beatrice, NE 68310  
All Rights Reserved

Part No. 4502-211 Rev. A  
(402) 223-6300  
Fax (402) 223-5489  
Printed in the USA.

