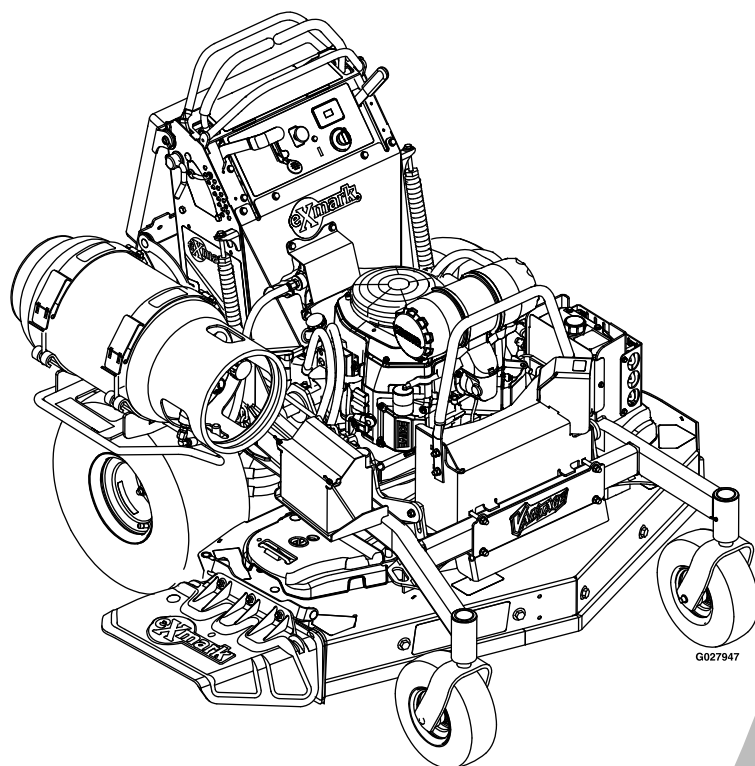




VANTAGE® S-SERIES LP

Model No. VTS740PKC52400—Serial No. 31500000 and Up

Picture below may not reflect actual product.



Parts Manual

Part No. 4502-271 Rev. A

Ordering Replacement Parts

To order replacement parts, please supply the part number, the quantity, and the description of each part desired.

Understanding Reference Numbers

Each identified part in an illustration has a reference number. The reference number for a part also appears in the parts list, along with other information about the part.

This catalog uses two special reference number formats, one to indicate parts in a service assembly and another to indicate the quantity of a given part in an illustration.

Service Assembly Reference Numbers

Parts in service assemblies have reference numbers in the form a:b. The a represents the reference number of the entire service assembly and the b represents a sequential number unique to each part within the service assembly.

For example, a wheel assembly might be identified by reference number 6, the tire by 6:1, the valve by 6:2, and the wheel by 6:3. When you order the assembly identified by reference number 6, you receive all parts identified by reference numbers 6:1, 6:2, and 6:3. However, you may also order any part individually. Reference numbers of this type appear in illustration and in parts lists.

Reference Numbers Indicating Quantity

In an illustration, if a reference number indicates more than one part, the reference number has the form nX y. The n represents the quantity of the part, the X is the multiplication symbol, and the y represents the reference number.

For example, in an illustration, the reference number 2X 37 means that two of the parts identified by reference number 37 are indicated.

List of Abbreviations

AR: as required	HLH: hex lag head	PTH: phillips truss head
ASM: assembly	HOC: height-of-cut	PTO: power-take-off
BBC: blade brake control	HP: high pressure	RH: right hand
BHTF: button head thread forming	HSBH: hex socket button head	ROPS: roll-over protection system
CARR: carriage	HSFH: hex socket flat head	RRB: rear roller brush
CCW: counter clockwise	HSH: hex socket head	SFH: slotted fillister head
CW: clockwise	HWH: hex washer head	SHH: slotted hex head
DEG: degrees	HWHTF: hex washer head thread forming	SHWH: slotted hex washer head
DPA: Dual Point Adjustment	HYD: hydraulic	SPH: slotted pan head
ECM: electronic control module	LH: left hand	SQH: square head
EXT: external	LP: low pressure	SRH: slotted round head
FH: flat head	LPG: Liquefied Petroleum Gas	STD: standard
GA: gauge	NI: nylon insert	TAP: self tapping
HD: heavy-duty	NPTF: national pipe thread fine	TTH: torx truss head
HF: hex flange	PFH: phillips flat head	
HH: hex head	PPH: phillips pan head	
HHF: hex head flange	PPHTF: phillips pan head thread forming	
HHFTF: hex head flange thread forming	PRH: phillips round head	
HJ: hex jam		

Touch Up Paint

Exmark black touch up spray paint – gloss black.

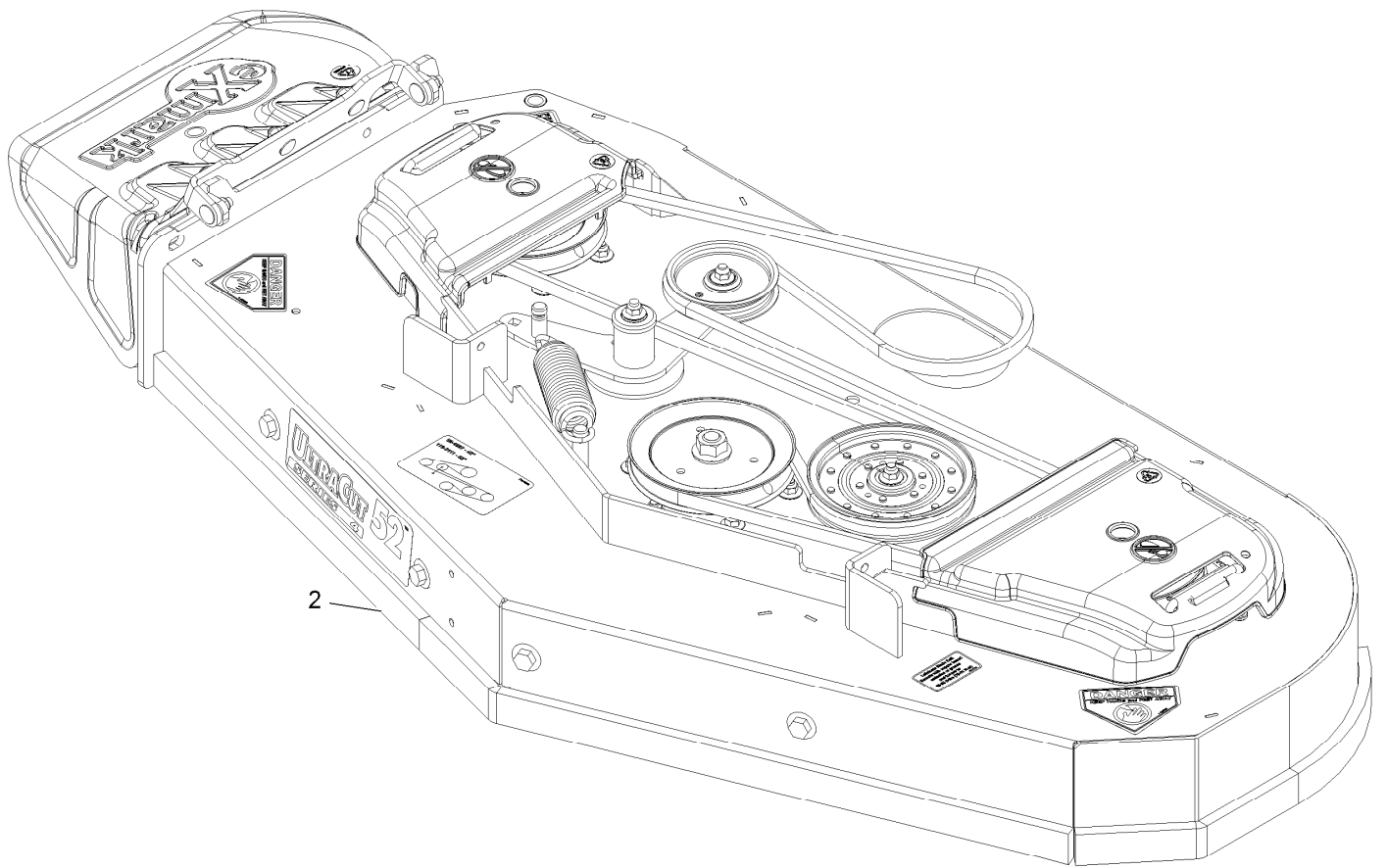
Exmark red touch up paint (spray paint – P/N 1-850337 - .6 oz liquid bottle – P/N 103-9140).



If your Exmark dealer does not have the Exmark part in stock, Exmark will get the parts to the dealer the next business day or the part will be FREE Guaranteed!! (Some restrictions apply. See your participating Exmark Dealer for details.)

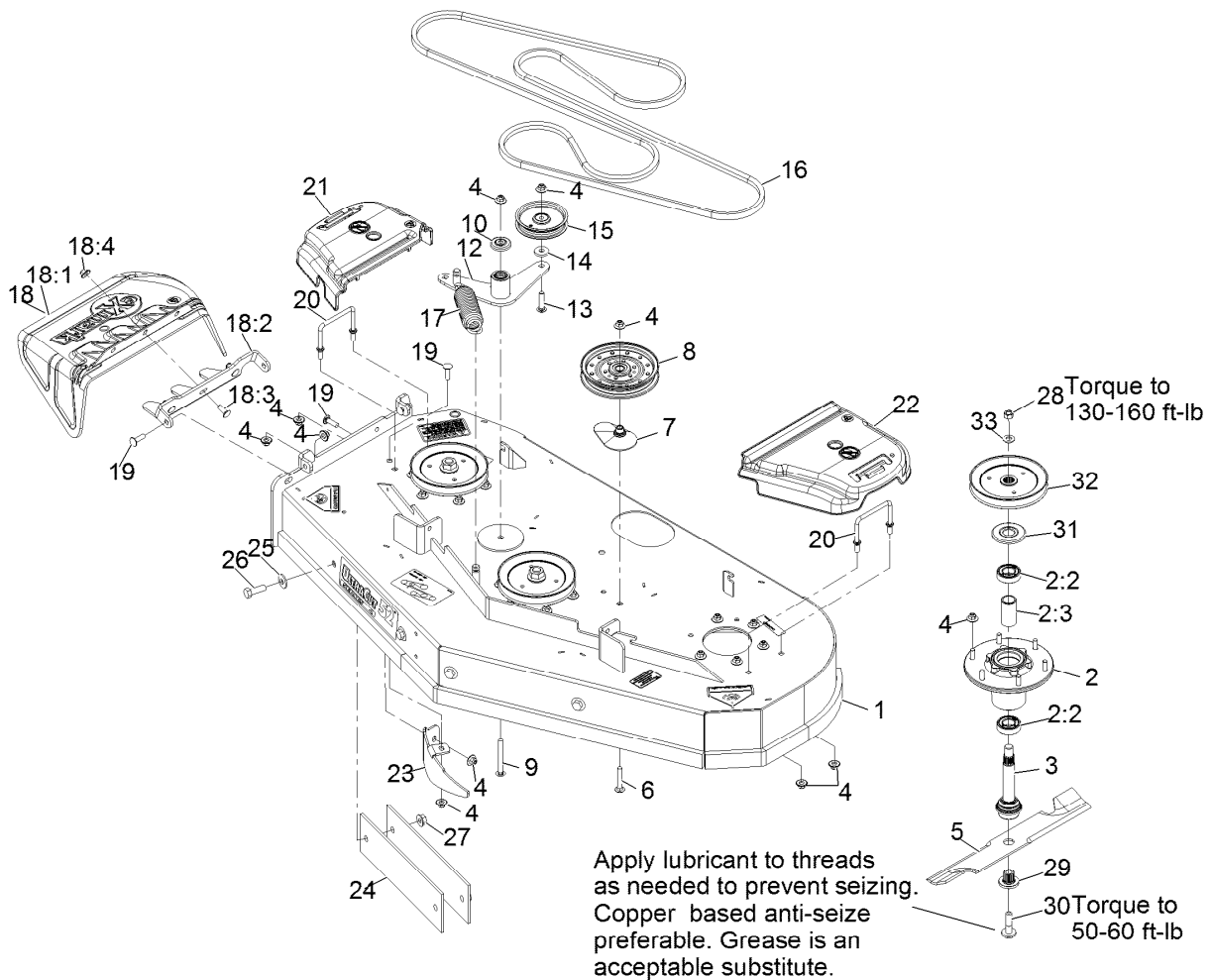
Contents

Complete Deck Assembly.....	4
Deck Assembly.....	5
Deck W/Decals Assembly No. 116-4001.....	6
Idler Arm Assembly No. 116-3806.....	7
Main Frame Assembly.....	8
Control Tower With Decals Assembly No. 116-5024.....	9
Wheel and Bearing Assembly No. 112-3810.....	10
Deck Lift Assembly.....	12
Park Brake Assembly.....	14
Platform Group.....	15
Cushion Assembly No. 126-1210.....	16
Platform Assembly No. 116-1804.....	17
Control Assembly.....	18
Engine Assembly.....	20
LPG Fuel Assembly.....	21
Ground Drive Assembly.....	22
LH Tracking Control Linkage Assembly No. 116-4936.....	24
RH Tracking Control Linkage Assembly No. 116-4937.....	25
Pump Idler Assembly No. 116-9980.....	26
Electrical Assembly.....	27



Complete Deck Assembly

<i>Ref.</i>	<i>Part Number</i>	<i>Qty.</i>	<i>Description</i>
2	116-5012	1	ASM-Deck Complete 524

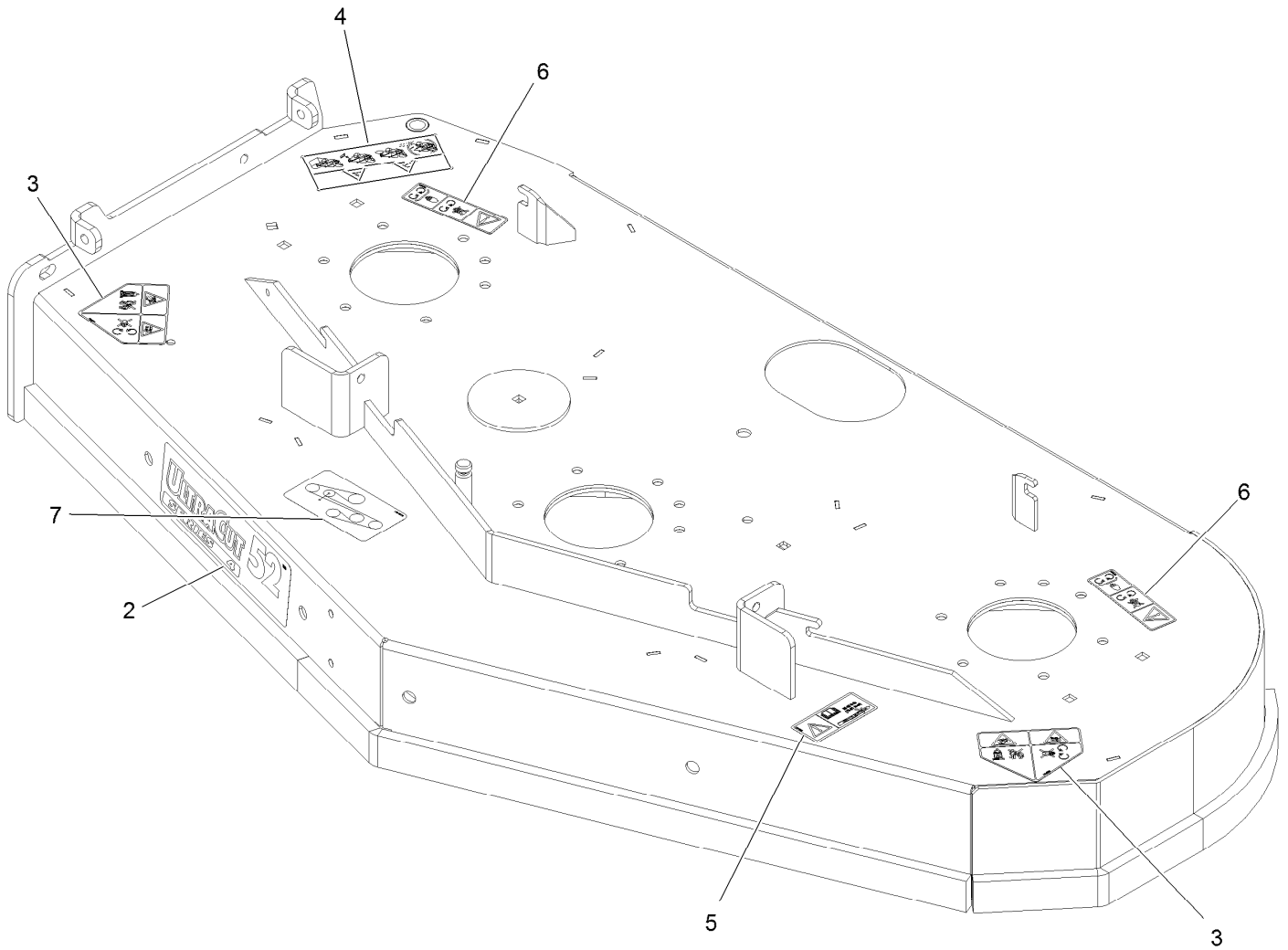


Deck Assembly

Ref.	Part Number	Qty.	Description	Ref.	Part Number	Qty.	Description
1	116-4001	1	Deck ASM-524	17	116-6317	1	Spring-Extension
2	116-3344	3	ASM-Cutter Hsg With Bearings	18	109-7188	1	ASM,Discharge Chute
2:2	116-0720	2	Bearing-Ball	18:1	109-2738	1	Chute, Discharge
2:3	116-3312	1	Spacer-Bearing	18:2	109-8675-01	1	Bracket,Discharge Chute
3	116-3341	3	ASM-Spindle And Seal ■	18:3	3231-22	3	Bolt-Carriage 3/8-16 X 1
4	109-6658	29	Nut-Nyloc 3/8-16 Flg	18:4	109-6658	3	Nut-Nyloc 3/8-16 Flg
5	103-6387	3	Blade, Low Lift	19	3231-28	4	Bolt-Carriage 3/8-16 X 1 1/4
5	103-6382	3	Blade, Solid	20	109-6982	2	Wireform-Cover
5	103-6392	3	Blade, Mulching ●	21	109-6935	1	Cover-Belt, RH
5	103-6402	3	Blade-Notched	22	109-6936	1	Cover-Belt, LH
5	116-5175	3	Blade-Extreme 2, 18.00"	23	116-5814-01	1	Baffle-Dogleg, Lz-Vt52
6	3231-7	1	Bolt-Carriage 3/8-16 X 2 1/4	24	116-1822-01	4	Bar,Weight
7	109-2872	1	Spacer-Pulley	25	1-513435	4	Washer-Spring Disc 1/2
8	116-4667	1	Idler-Pulley, Flat	26	325-6	4	Screw-HH 1/2-13 X 1 1/2
9	3231-11	1	Bolt-Carriage 3/8-16 X 3 1/2	27	32128-49	4	Nut-Whizlock 1/2-13
10	103-2916	1	Guard-Top	28	116-7306	3	Nut-Hex
12	116-3806	1	Idler Arm ASM W/Bearings	29	103-3037	3	Bushing, Splined
13	116-3381	1	Bolt-Carriage 3/8-16 X 1 3/4	30	109-9220	3	Screw-Sems 1/2-20 X 2.19
14	1-373034	1	Washer	31	116-1286	3	Guard,Bearing Top .989
15	93-1622	1	Pulley-Idler	32	116-0675	3	Sheave,Blade Drive 6.50 ■
16	116-3111	1	Belt-B158.0	33	103-2802	3	Washer-Spring Disc 3/4

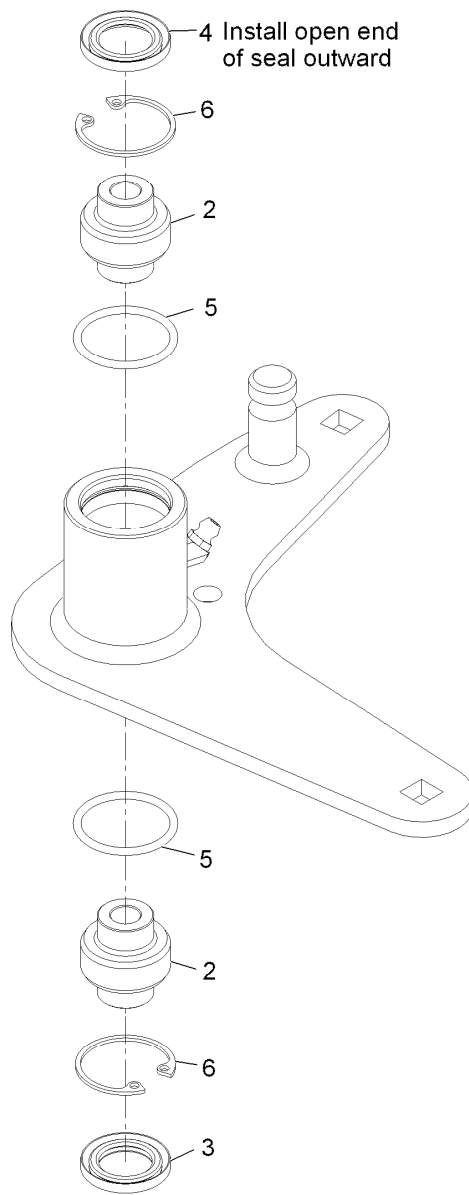
● Requires installation of mulch kit for proper mulching. See your Exmark dealer for details.

■ Apply Mobil HTS grease (P/N 103-5217 1.5 oz packet) (or a food-grade anti-seize). See operator s manual for locations.



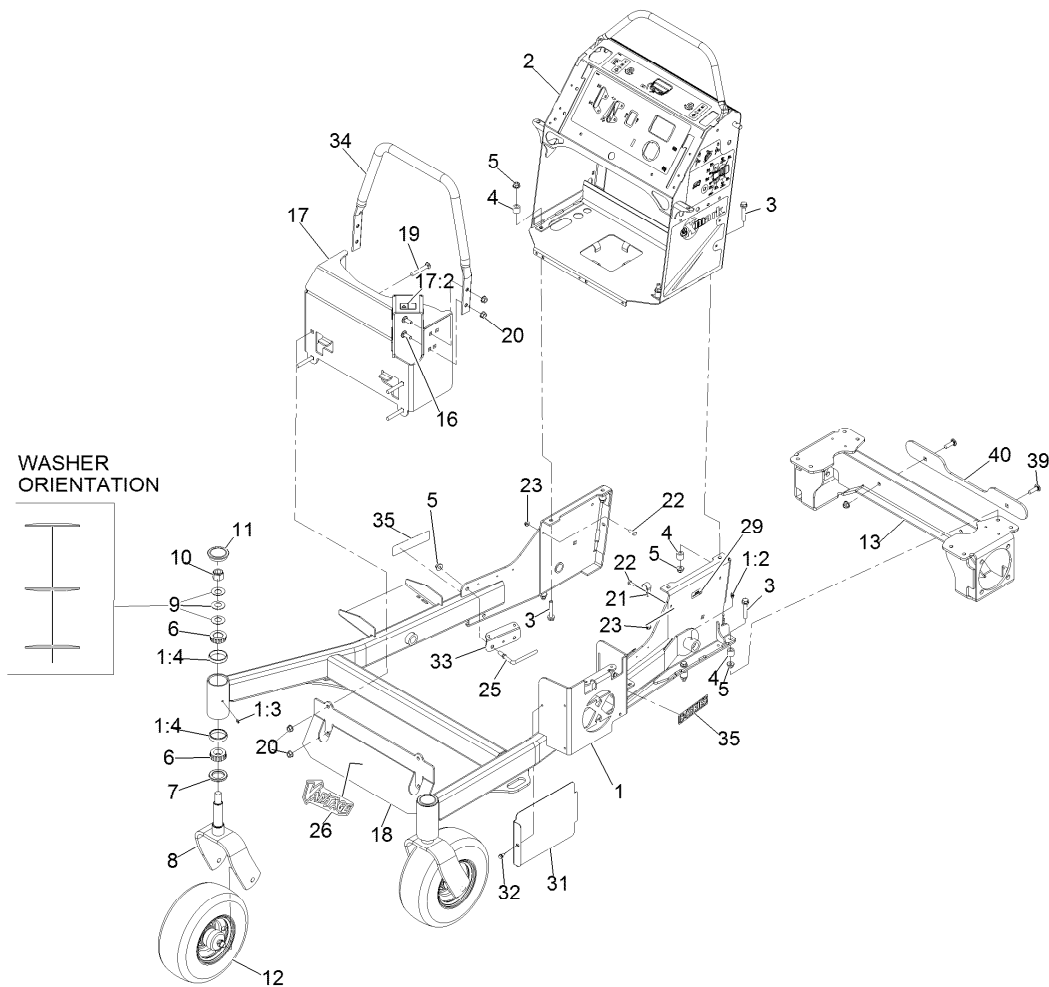
Deck W/Decals Assembly No. 116-4001

<i>Ref.</i>	<i>Part Number</i>	<i>Qty.</i>	<i>Description</i>
2	116-0034	1	Decal,Ultracut 52 Series 4
3	112-8760	2	Decal-Danger
4	114-3489	1	Decal-Warning, Bagger
5	116-8283	1	Decal-Bolt Torque
6	112-9028	2	Decal-Cover Missing
7	116-8774	1	Decal-Belt Routing



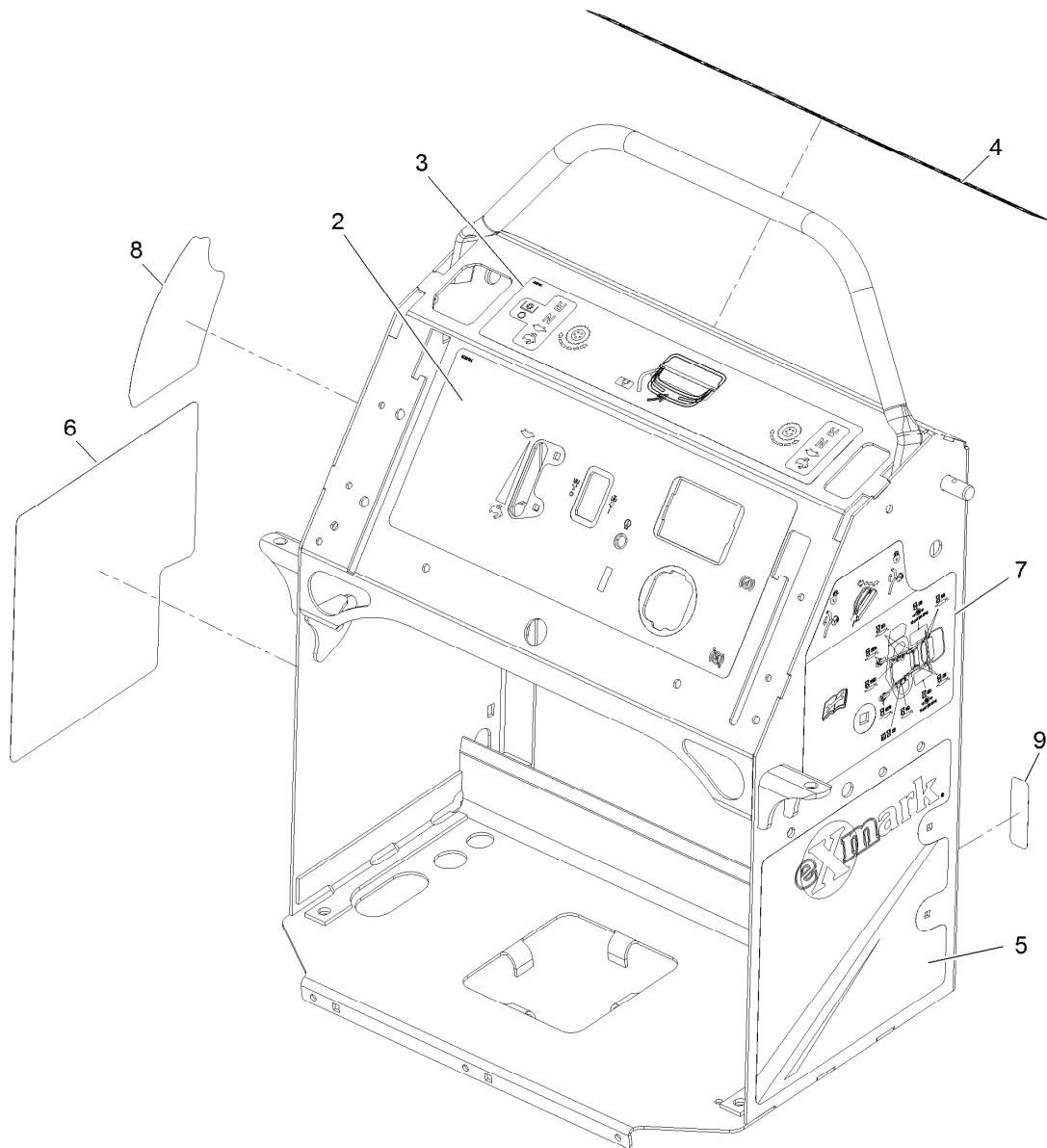
Idler Arm Assembly No. 116-3806

<i>Ref.</i>	<i>Part Number</i>	<i>Qty.</i>	<i>Description</i>
2	103-3504	2	Bearing-Spherical
3	103-3505	1	Seal-Double Lip
4	103-3506	1	Seal-Single Lip
5	106-7159	2	O-Ring
6	32120-10	2	Ring-Retaining



Main Frame Assembly

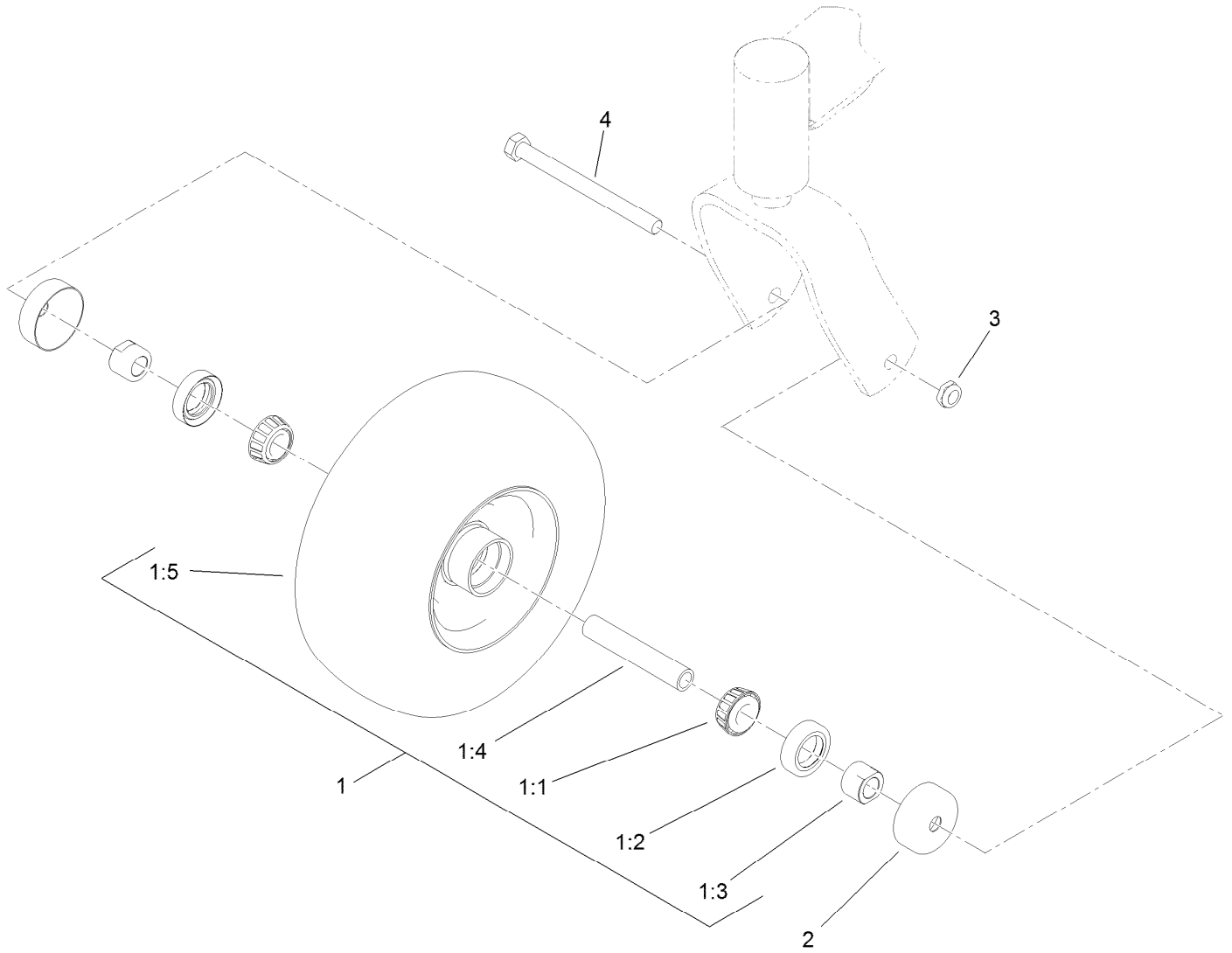
Ref.	Part Number	Qty.	Description	Ref.	Part Number	Qty.	Description
1	116-7045	1	Front Frame ASM	17:2	106-5517	1	Decal-Warning, Hot Surface
1:2	302-5	4	Zerk 1/4-28 Str Thrd Forming	18	116-3113-01	1	Panel-Guard
1:3	1-811010	2	Plug	19	3231-31	4	Bolt-Carriage 3/8-16 X 2 1/2
1:4	1-543508	4	Cup-Bearing Tapered Roller	20	32128-21	8	Nut-3/8-16 Flanged Side Lock
2	116-5024	1	Control Tower ASM-Efi	21	2412-87	1	Clamp-Cable
3	108-3742	6	Screw-HHF	22	321-4	1	Screw-HH
4	121-1760	8	Spacer	23	104-7201	1	Nut-Flange, NI
5	104-8301	12	Nut-Nyloc 3/8-16 Fig	25	116-3382	2	Guide-Hose, Support
6	1-543509	4	Cone-Bearing Tapered Roller	26	116-3137	1	Decal-Vantage Logo
7	116-5647	2	Seal-Grease	29	126-4345	1	Decal-Patent Ttco.Com
8	121-7988-01	2	Fork-Caster	31	116-6981-01	1	Shield-Heat, Tall
9	1-633508	6	Washer-Spring Disc	32	32144-4	1	Screw-HWH 1/4-20 X 1/2 Taptite
10	3296-51	2	Nut-Nyloc 3/4-10	33	116-6997-01	2	Guard-Hose
11	103-4882	2	Cap-Grease	34	116-8152-03	1	Tube-Guard
12	112-3810	2	Wheel/Tire And Bearing ASM	35	116-3884	2	Decal-S-Series
13	116-9557-03	1	Weld, Motor Frame [black]	39	3231-22	2	Bolt-Carriage 3/8-16 X 1
16	3231-22	4	Bolt-Carriage 3/8-16 X 1	40	126-1364-03	1	Plate, Bumper Spacer
17	126-5015	1	ASM, Muffer Guard W/ Decal				



Control Tower With Decals Assembly No. 116-5024

<i>Ref.</i>	<i>Part Number</i>	<i>Qty.</i>	<i>Description</i>
2	116-8778	1	Decal-Control Panel Efi
3	116-8781	1	Decal-Motion Control
4	116-8780	1	Decal-Warning
5	116-4269	1	Decal-LH Panel
6	116-1909	1	Decal-RH Panel
7	116-8777	1	Decal-Service Aid
8	116-2040	1	Decal-Height Of Cut
9	116-8772	1	Decal-Fuse

Wheel and Bearing Assembly No. 112-3810

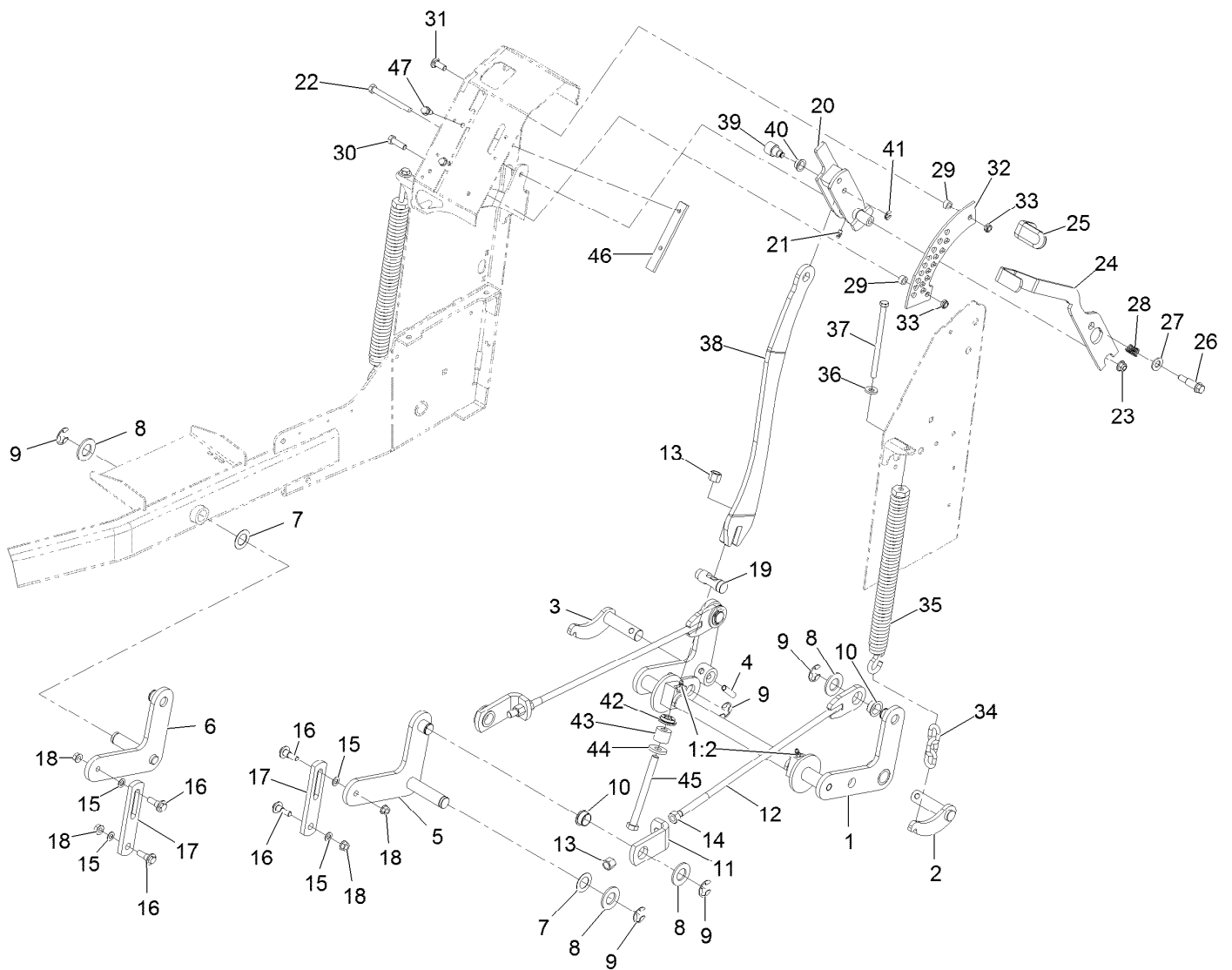


Wheel and Bearing Assembly No. 112-3810 (continued)

<i>Ref.</i>	<i>Part Number</i>	<i>Qty.</i>	<i>Description</i>	<i>Ref.</i>	<i>Part Number</i>	<i>Qty.</i>	<i>Description</i>
1		1	Wheel And Bearing ASM ●	1:5	110-9965	1	Wheel And Tire ASM
1:1	1-633585	2	Bearing-Cone, Taper	2	103-2768	2	Guard-Seal
1:2	103-0063	2	Seal-Caster	3	3296-45	1	Nut-Lock, NI
1:3	103-3051	2	Spacer-Nut ■	4	325-20	1	Screw-HH
1:4	103-3157	1	Axle-Caster				

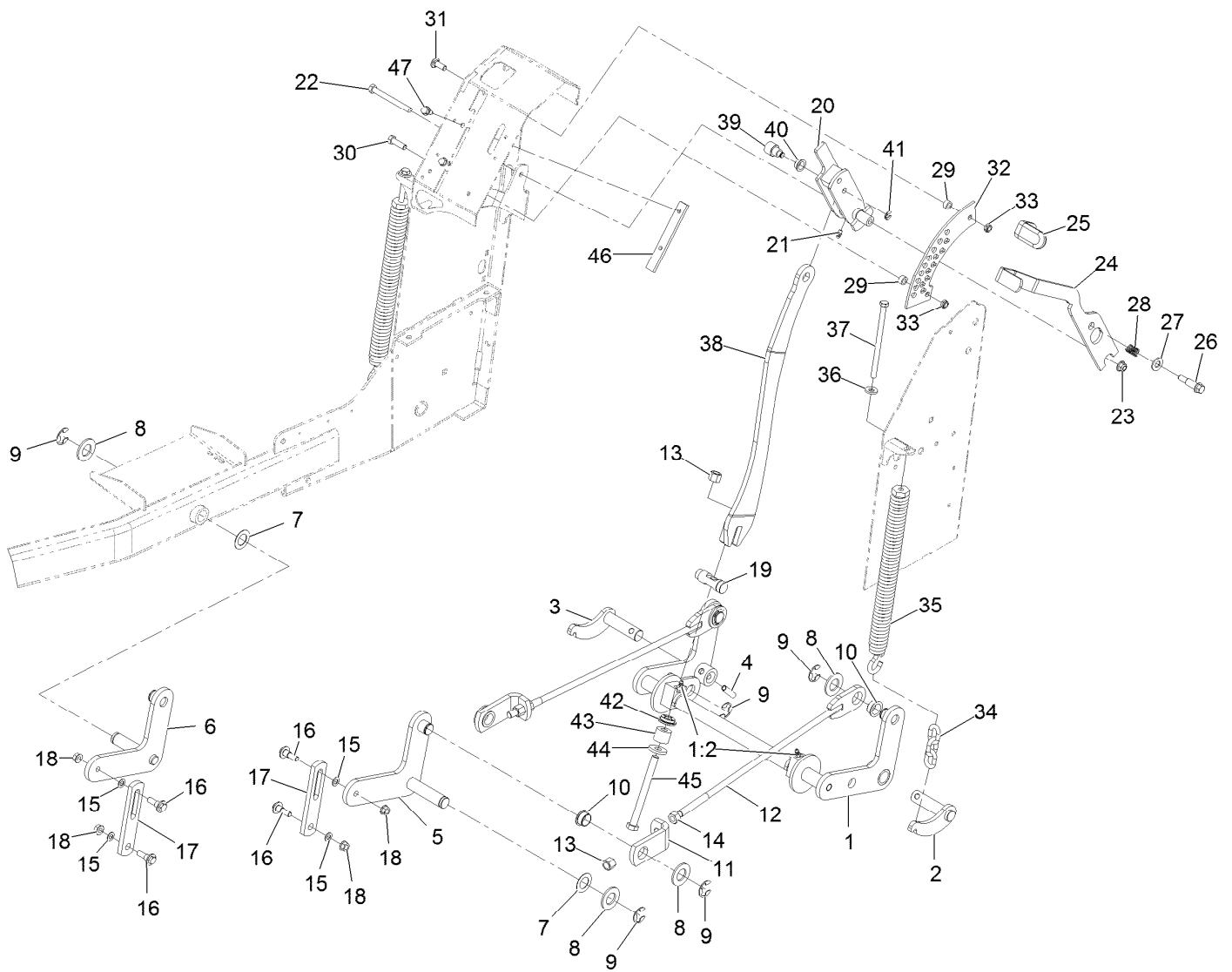
● Not serviced separately

■ Use Pro-Lock, Nut Type (P/N 1-840022, .5ml tube) on spacer nut



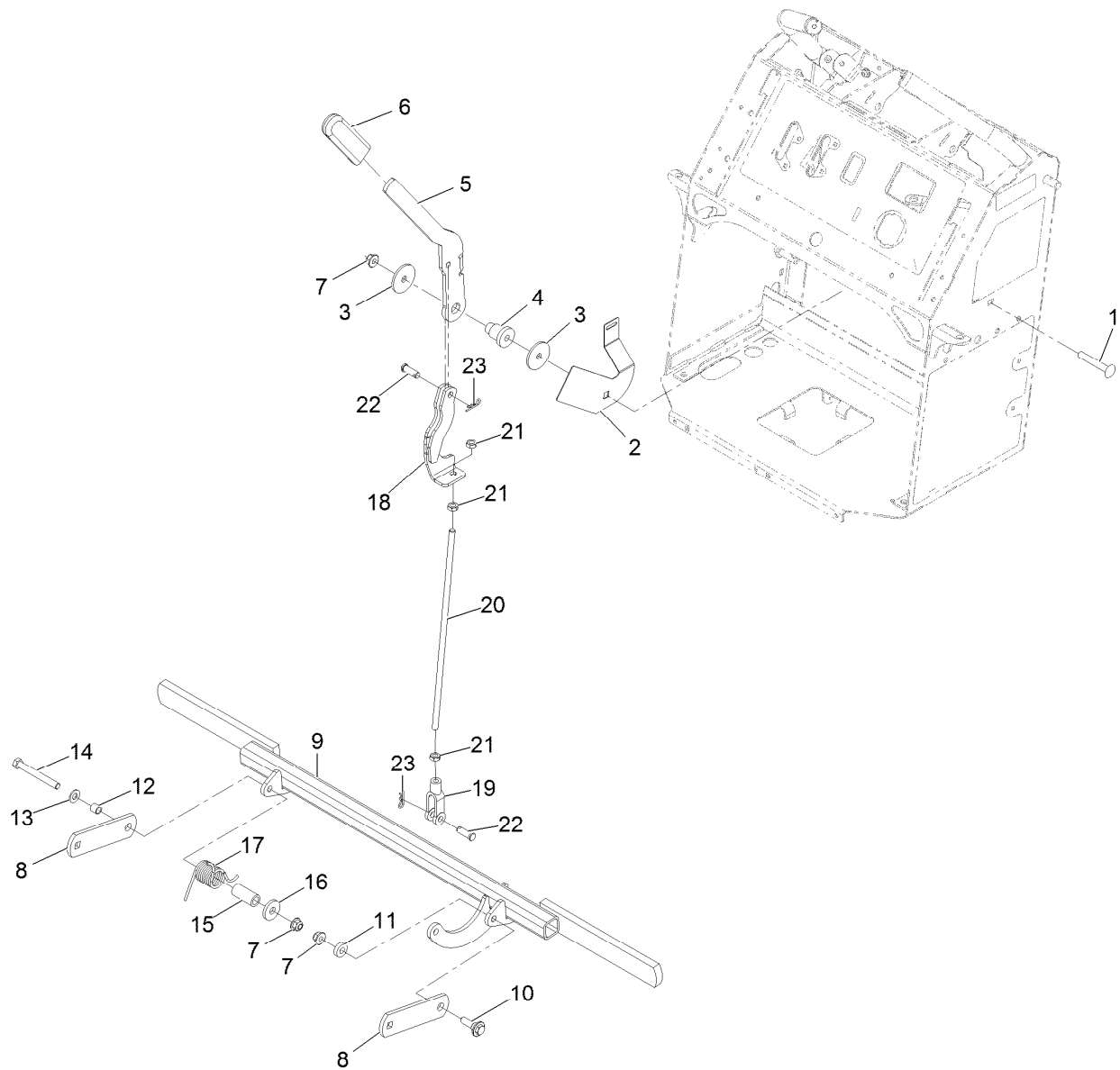
Deck Lift Assembly

Ref.	Part Number	Qty.	Description	Ref.	Part Number	Qty.	Description
1	116-3103	1	Rear Crossshaft ASM	19	114-5274	1	Pin-HOC
1:2	302-11	2	Zerk-45° 1/4-28	20	114-3512	1	HOC Handle ASM
2	116-3104-01	1	Shaft-Pivot, LH	21	302-5	1	Zerk 1/4-28 Str Thrd Forming
3	116-3105-01	1	Shaft-Pivot, RH	22	323-42	1	Screw-HH 3/8-16 X 3 3/4
4	116-3107	2	Pin-Spiral	23	104-8301	1	Nut-Nyloc 3/8-16 Flg
5	121-5993-01	1	Arm-Lift, LH	24	114-1878-03	1	Lever-HOC
6	121-5994-01	1	Arm-Lift, RH	25	1-633268	1	Grip-Lever
7	110-6767	2	Washer-Thrust	26	66-0561	1	Screw-Shoulder
8	3256-29	6	Washer-7/8 Sae	27	3256-26	1	Washer-1/2 Sae
9	32151-103	7	E-Ring	28	65-9940	1	Spring
10	116-2909	4	Bearing-Flange	29	111044	2	Bushing
11	116-2901	2	Bracket-Lift Rod	30	323-7	1	Screw-HH 3/8-16 X 1 1/4
12	116-8676	2	Lift Rod ASM	31	3231-22	1	Bolt-Carriage 3/8-16 X 1
13	3296-23	3	Nut-Nyloc 1/2-13	32	114-5307	1	Bracket-HOC
14	3217-9	2	Nut-Hex 1/2-13	33	3296-59	2	Nut-Nyloc 3/8-16 Thin
15	40-1940	4	Washer	34	103-9859	2	Chain-Decklift
16	109-9840	4	Screw-Hex Flange 3/8-16 X .80	35	116-0886	2	Extension Spring ASM
17	117-0519	2	Link-Lift	36	98-5975	2	Washer-Spring Disc 3/8
18	32128-21	4	Nut-3/8-16 Flanged Side Lock	37	323-58	2	Bolt-HH 3/8-16 X 6 Tap
				38	116-2939	1	Bar-Lift



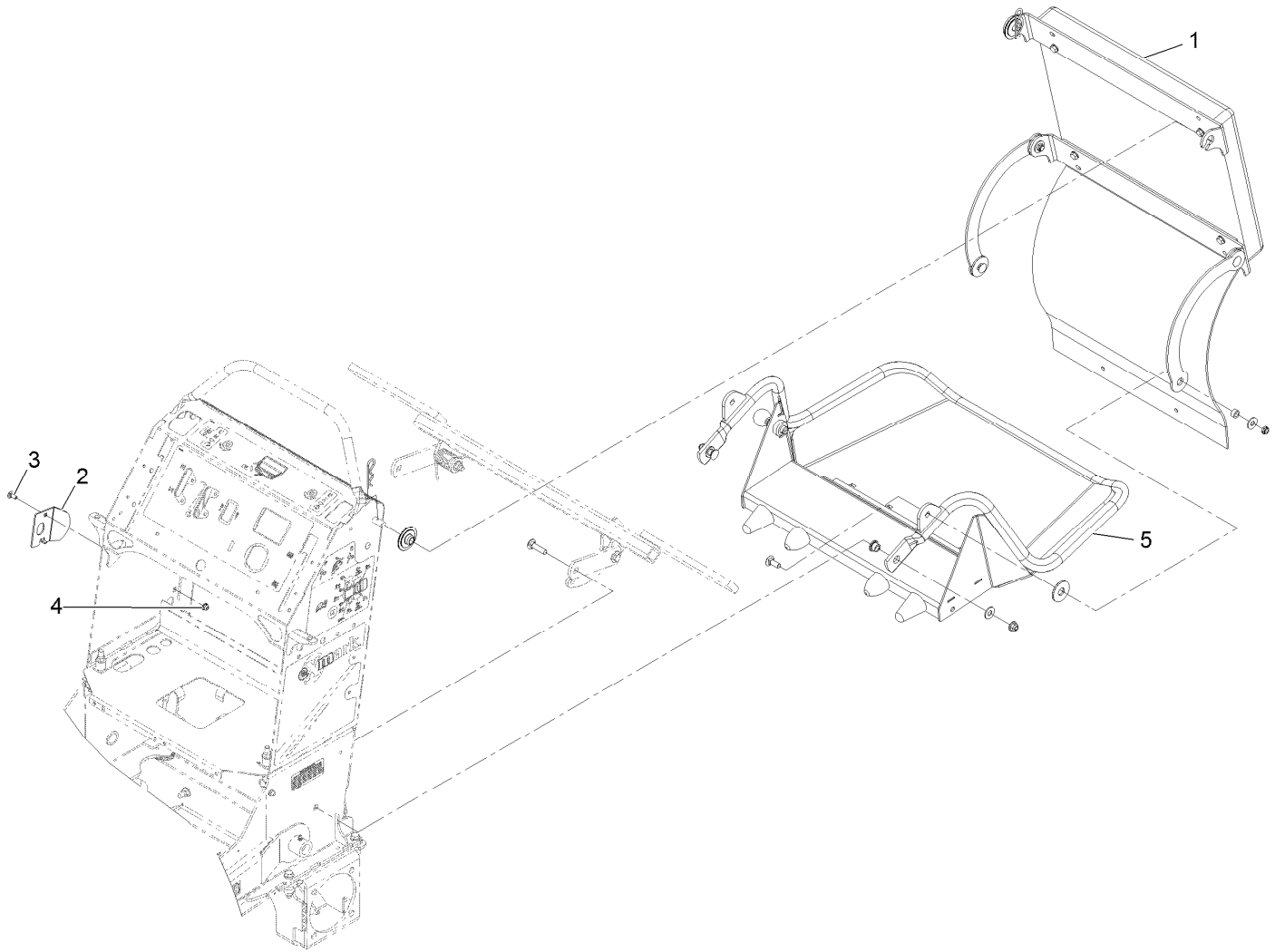
Deck Lift Assembly (continued)

<i>Ref.</i>	<i>Part Number</i>	<i>Qty.</i>	<i>Description</i>	<i>Ref.</i>	<i>Part Number</i>	<i>Qty.</i>	<i>Description</i>
39	116-3048	1	Hub-Pivot	44	92-2651	1	Washer
40	116-3047	1	Bearing-Flange	45	325-22	1	Screw-HH 1/2-13 X 5 1/2
41	32151-47	1	Ring-Retaining	46	116-3124	1	Skid-Handle, Lift
42	116-3625	1	Seat-Spring	47	32144-70	2	Screw-HWH 5/16-18 X 3/4 Tf
43	116-3241	1	Spring-Urethane				



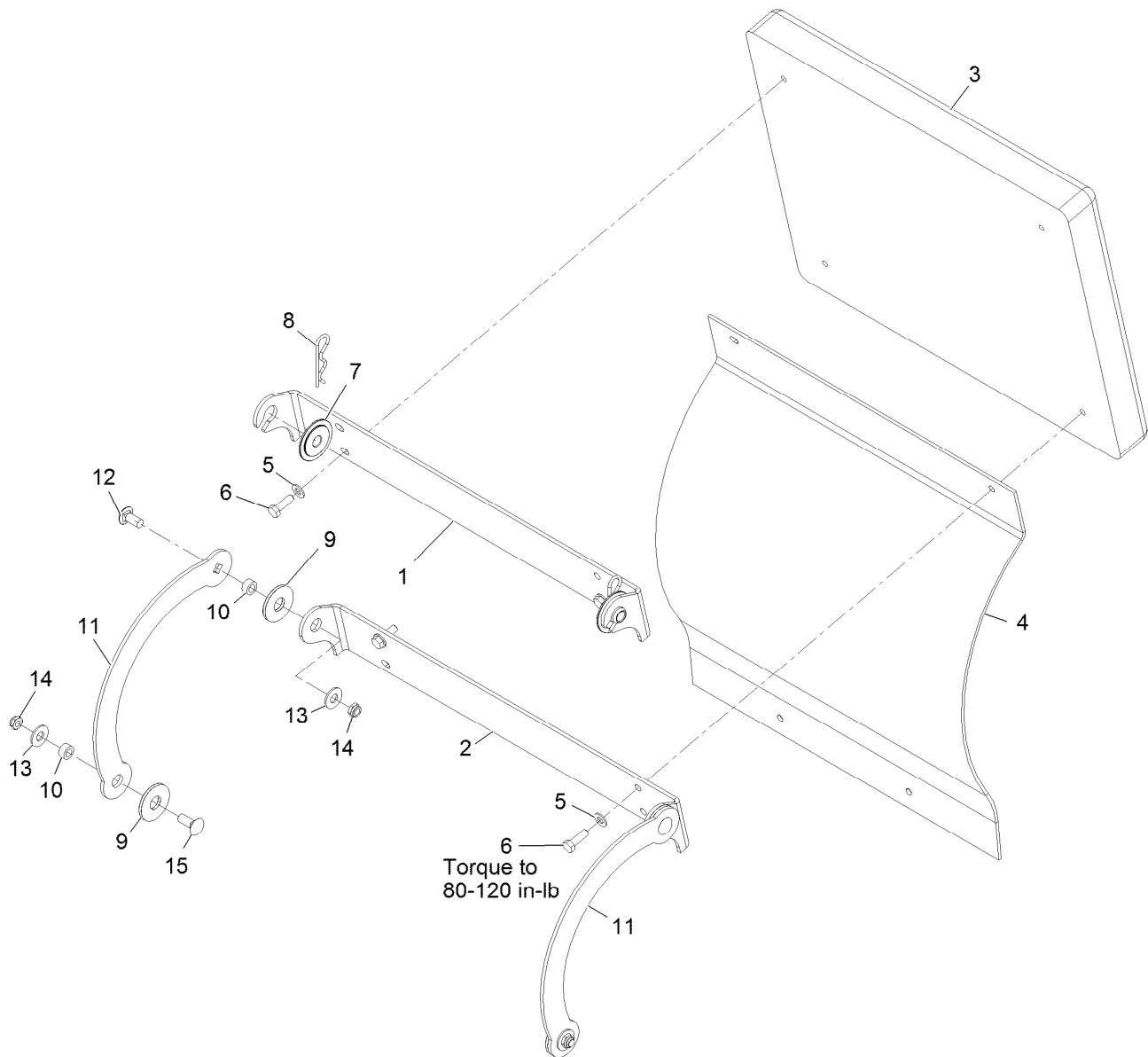
Park Brake Assembly

<i>Ref.</i>	<i>Part Number</i>	<i>Qty.</i>	<i>Description</i>	<i>Ref.</i>	<i>Part Number</i>	<i>Qty.</i>	<i>Description</i>
1	3231-44	1	Bolt-Carriage 3/8-16 X 2 1/2	12	117-9684	1	Spacer
2	117-0452-03	1	Plate-Switch, Brake	13	3256-24	1	Washer-3/8 Sae
3	63-7400	2	Washer-Rebound	14	323-20	1	Screw-HH 3/8-16 X 3-1/4
4	106-3214	1	Mount-Pulley	15	117-9683	1	Spacer
5	117-5759-03	1	Lever-Brake	16	117-9682	1	Spring-Torsion
6	1-633268	1	Grip-Lever	17	1-373034	1	Washer
7	104-8301	3	Nut-Nyloc 3/8-16 Flg	18	119-8780-03	1	Arm-Brake
8	114-5186-01	2	Support-Brake	19	1-633131	1	Yoke-Linkage, Brake
9	119-8730-03	1	Bar-Brake	20	119-7244	1	Rod-Brake
10	614672	1	Screw-Shoulder 3/8-16 X 1.295	21	3220-3	3	Nut-Jam 3/8-24
11	5-0652	1	Spacer	22	283-2	2	Pin-Clevis 3/8 X 1 1/6
				23	3290-307	2	Pin-Cotter



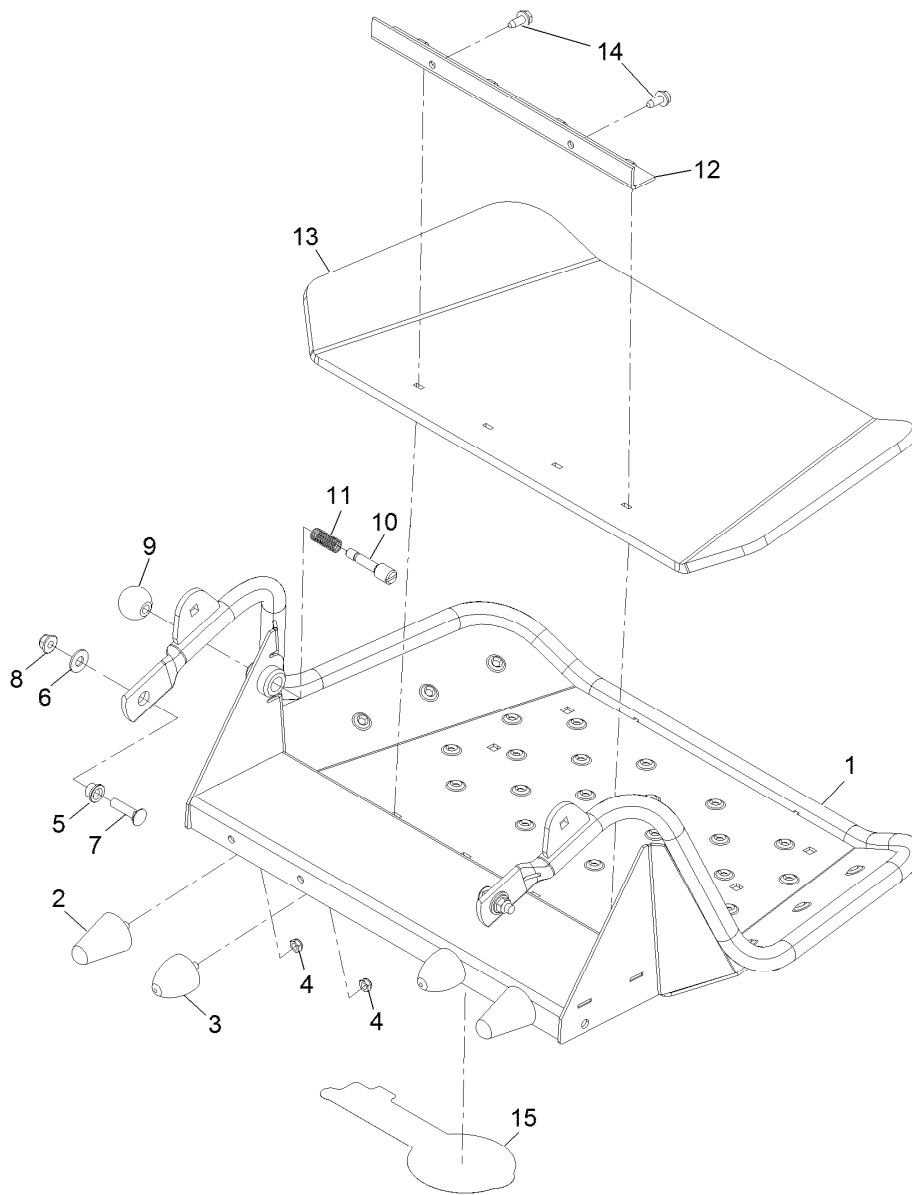
Platform Group

<i>Ref.</i>	<i>Part Number</i>	<i>Qty.</i>	<i>Description</i>
1	126-1210	1	ASM, Cushion
2	119-7312	1	Plate-Striker
3	3229-11	1	Bolt-Carriage 1/4-20 X 5/8
4	104-7201	1	Nut-Nyloc 1/4-20 Flg
5	116-1804	1	ASM,Platform



Cushion Assembly No. 126-1210

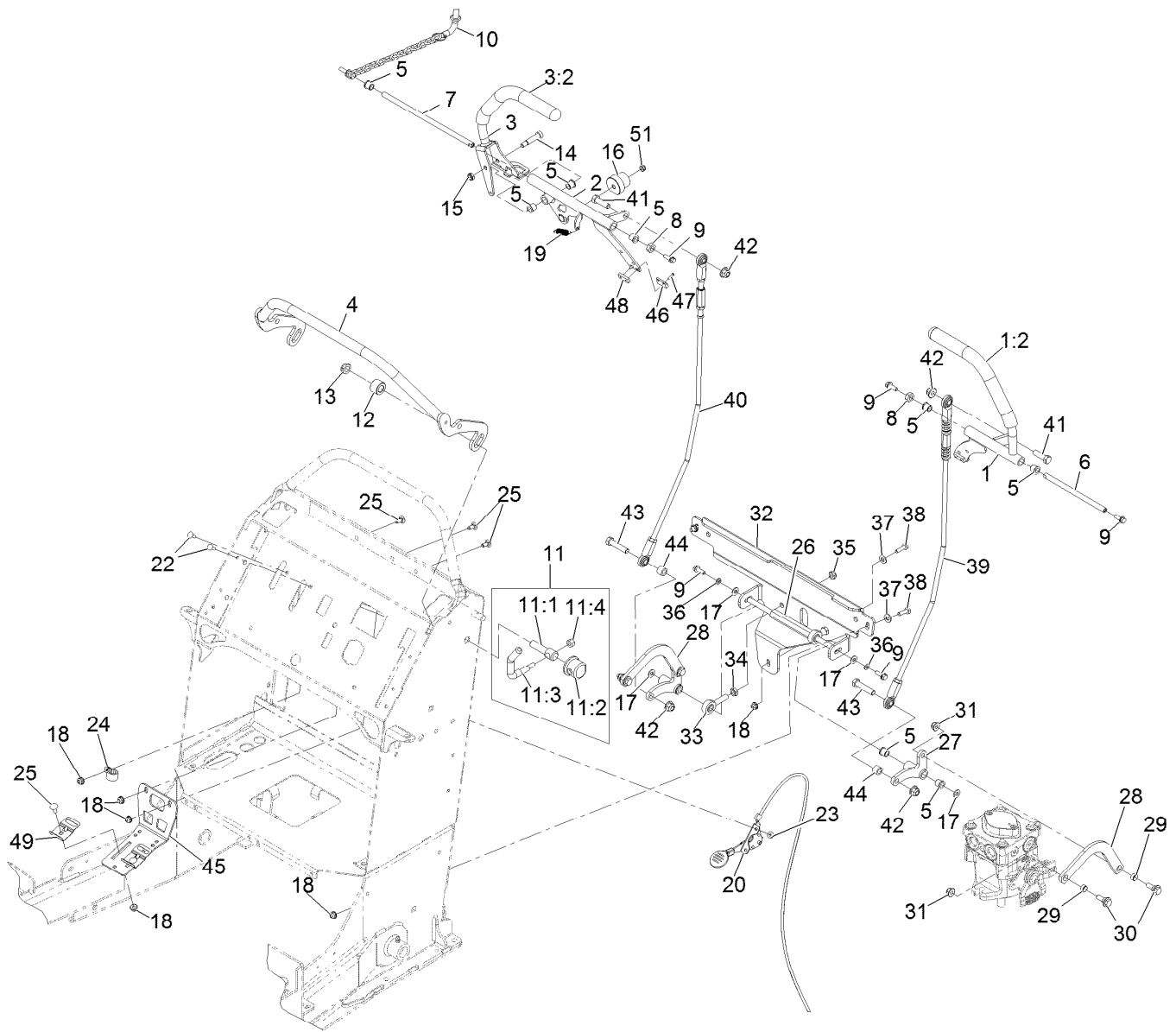
Ref.	Part Number	Qty.	Description
1	116-2757-03	1	Hinge-Pad
2	116-2061-03	1	Hinge-Pad
3	116-1790	1	Pad,Grey Cushion
4	126-0362	1	Shield, Rear
5	3256-23	4	Washer-5/16 Sae
6	116-0648	4	Screw-HH 5/16-18 X 1 W/Patch
7	116-2886	2	Slide-Bushing
8	3290-355	2	Pin-Hair
9	114-0463	4	Washer-Friction, Composite
10	111044	4	Bushing
11	114-1915-03	2	Link-Pad
12	3231-27	2	Bolt-Carriage 3/8-16 X 7/8
13	3256-4	4	Washer-3/8 Std
14	3296-59	4	Nut-Nyloc 3/8-16 Thin
15	3231-2	2	Bolt-Carriage 3/8-16 X 1



Platform Assembly No. 116-1804

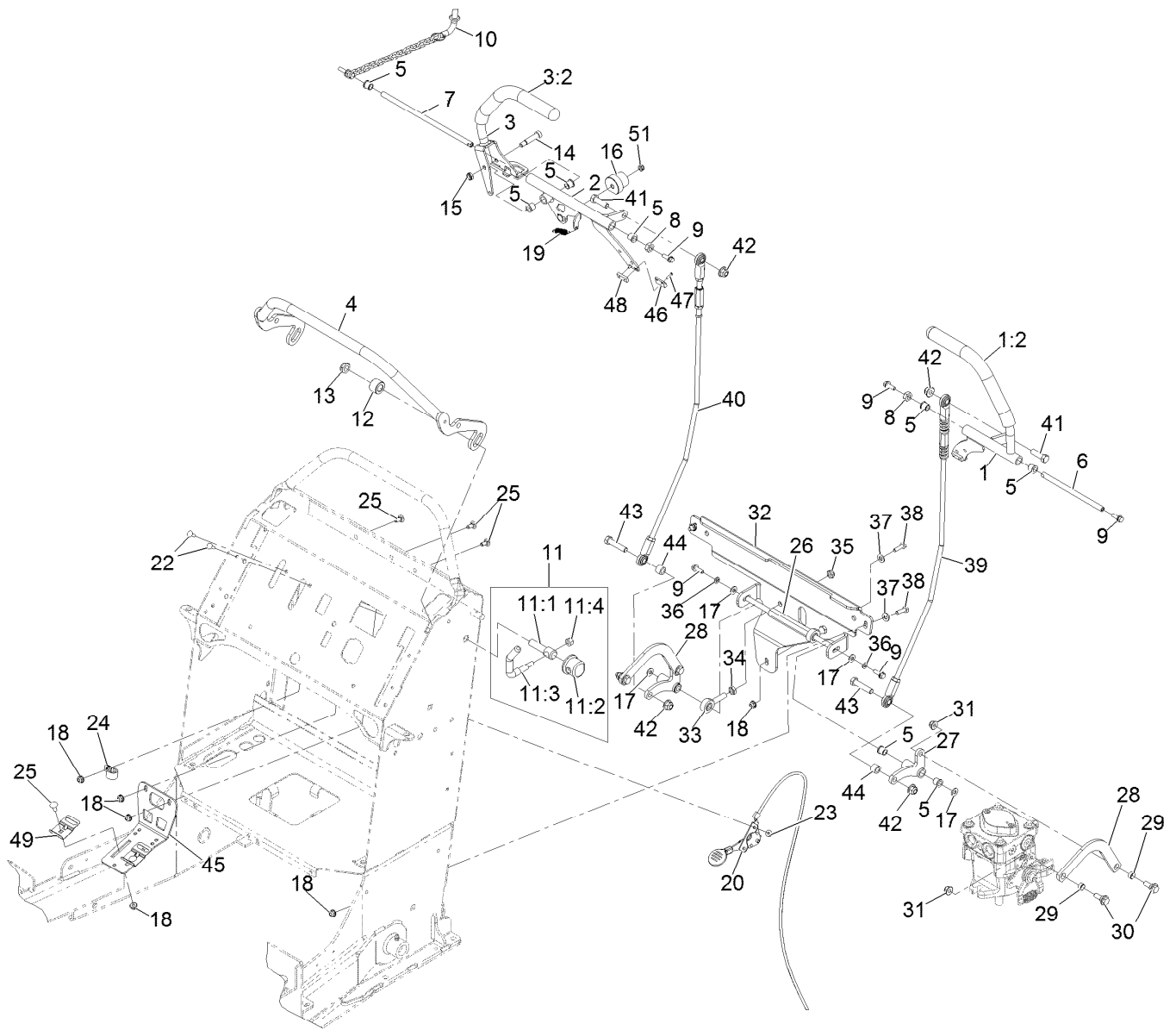
Ref.	Part Number	Qty.	Description
1	117-9641-03	1	Platform ASM
2	114-1925	2	Bumper-Rubber
3	114-1926	2	Bumper-Rubber
4	3296-47	4	Nut-Nyloc 5/16-18 Thin
5	109-8788	2	Bushing-Flanged
6	3256-4	2	Washer-3/8 Std
7	3231-4	2	Bolt-Carriage 3/8-16 X 1 1/2
8	104-8301	2	Nut-Nyloc 3/8-16 Flg
9	1-603175	1	Knob-Ball
10	119-8650	1	Pin-Latch ●
11	114-5348	1	Spring
12	114-1920-03	1	Clamp-Shield
13	114-5349	1	Mat-Foot
14	32144-70	2	Screw-HWH 5/16-18 X 3/4 Tf
15	1-653546	1	Decal, Exmark

● Use Pro-Lock, Nut Type (P/N 1-840022, .5ml tube) on threads.



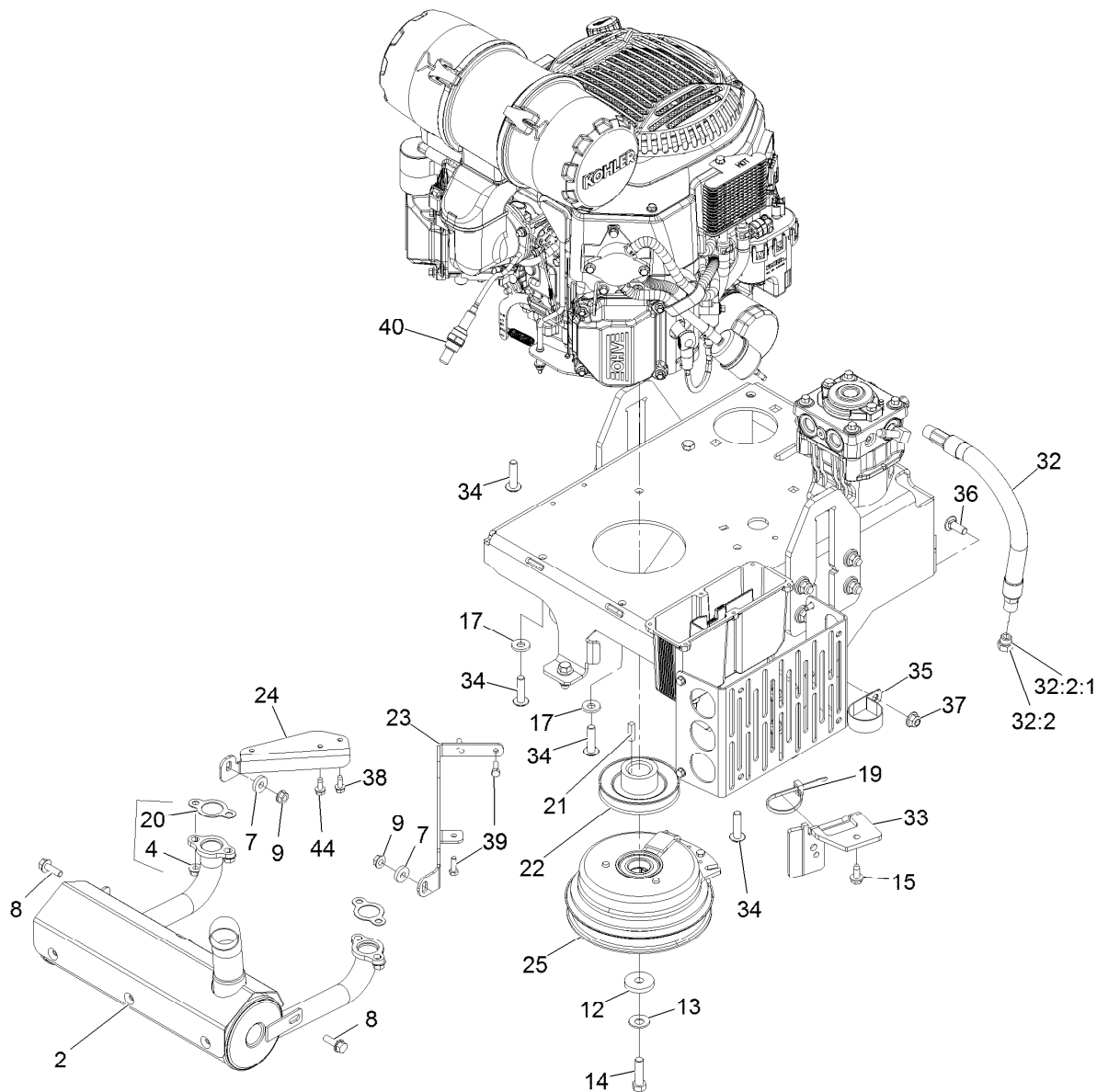
Control Assembly

Ref.	Part Number	Qty.	Description	Ref.	Part Number	Qty.	Description
1	116-4970	1	Lever ASM, LH	14	114-0239	1	Screw-Shoulder 5/16-18 X 1/2
1:2	116-2357	1	Grip-Handle, Control	15	3296-47	1	Nut-Nyloc 5/16-18 Thin
2	116-9817-03	1	Weld, Motion Control	16	126-1499	1	Cam
3	116-9815	1	ASM, Lever W/ Grip, Rt	17	3256-22	4	Washer-1/4 Sae
3:2	116-2357	1	Grip-Handle, Control	18	104-7201	8	Nut-Nyloc 1/4-20 Flg
4	116-6985-03	1	Tube ASM, Front Speed Control [19	114-0249	1	Spring-Extension
5	103-9928	10	Bearing	20	116-4276	1	Control-Throttle
6	116-4978	1	Shaft-Pivot, Motion Control	22	1-807533	2	Bolt-Carriage #10-24 X 5/8
7	116-4979	1	Shaft-Pivot, Motion Control	23	32128-17	2	Nut-Flange #10-24 Top Lock
8	116-4198	2	Spacer-Shaft, Drive Lever	24	2412-87	1	Clamp-Cable
9	117-8304	5	Screw-Hex Flange 1/4-20 X 3/4	25	3229-11	5	Bolt-Carriage 1/4-20 X 5/8
10	114-0409	1	HOC Pin ASM	26	116-3119	1	Shaft-Bellcrank Pivot
11	107-1664	2	Lever ASM	27	116-4975	2	Bellcrank-Control, Motion
11:1	106-3239	1	Screw-Lock	28	116-4973	2	Link-Bellcrank, Pump
11:2	107-1644	1	Cap-Lock	29	116-4976	4	Bushing-Sleeve
11:3	106-3241	1	Lever-Lock	30	116-2670	4	Screw-Shoulder HHF 5/16-18 X .96
11:4	3296-29	1	Nut-Nyloc 5/16-18	31	104-8300	4	Nut-Nyloc 5/16-18 Flg
12	116-2319	2	Spacer-Clamp	32	116-3202-03	1	Bracket-Bellcrank
13	3296-45	2	Nut-Nyloc 1/2-13 Thin	33	1-613204	2	Balljoint



Control Assembly (continued)

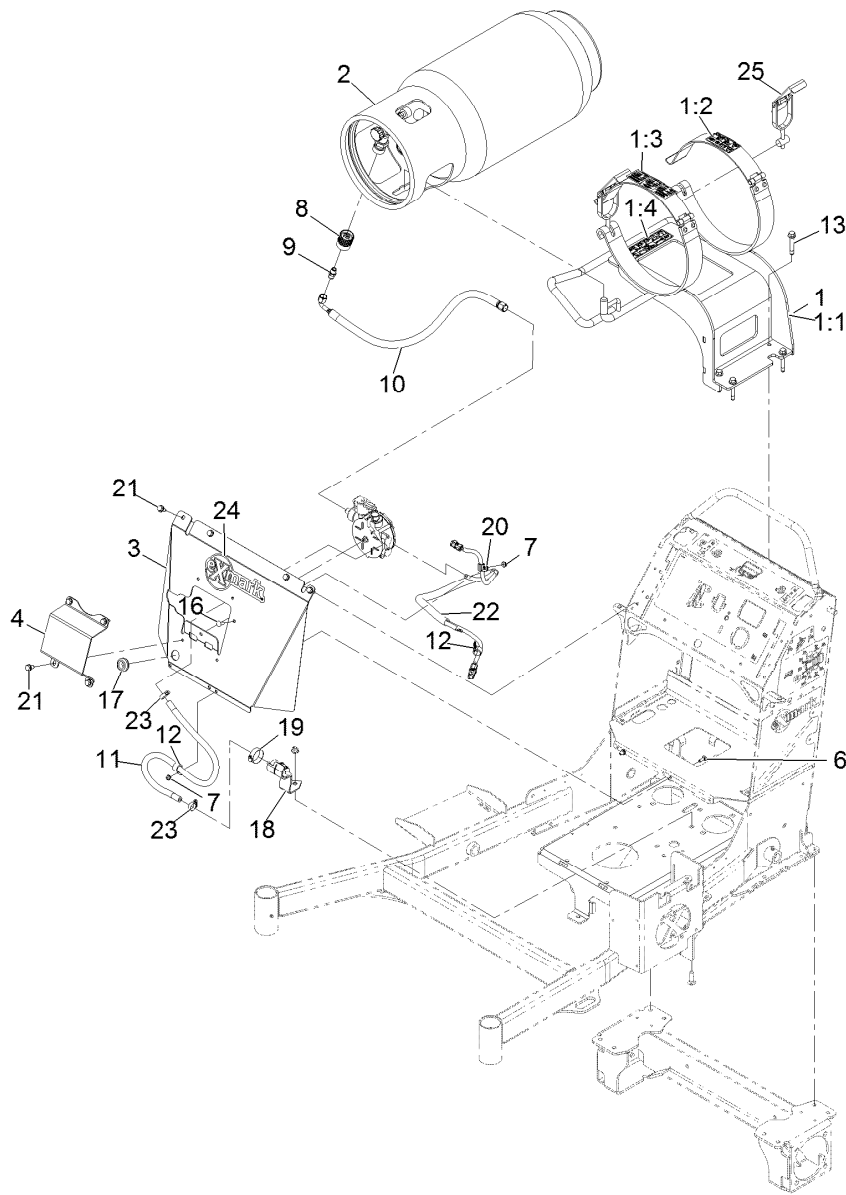
Ref.	Part Number	Qty.	Description	Ref.	Part Number	Qty.	Description
34	3220-3	2	Nut-Jam 3/8-24	42	104-8301	4	Nut-Nyloc 3/8-16 Flg
35	3296-5	2	Nut-Nyloc 3/8-24 Thin	43	323-9	2	Screw-HH 3/8-16 X 1 3/4
36	3253-3	2	Washer-Lock 1/4	44	52-2480	2	Spacer-Wheel
37	3256-23	3	Washer-5/16 Sae	45	116-4572	1	Bracket, Reed Switch
38	321-5	3	Screw-HH 1/4-20 X 7/8	46	116-2832	2	Actuator-Switch, Reed
39	116-4936	1	Linkage-Tracking Control, LH	47	116-3330	4	Screw-HH #4-40 X 1/2 W/Nylon
40	116-4937	1	Linkage-Tracking Control, RH	48	116-3227	2	Plate-Tapped
41	323-7	2	Screw-HH 3/8-16 X 1 1/4	49	116-4573	2	Clamp, Reed Switch
				51	3296-56	1	Nut-Nyloc 1/4-20 Thin



Engine Assembly

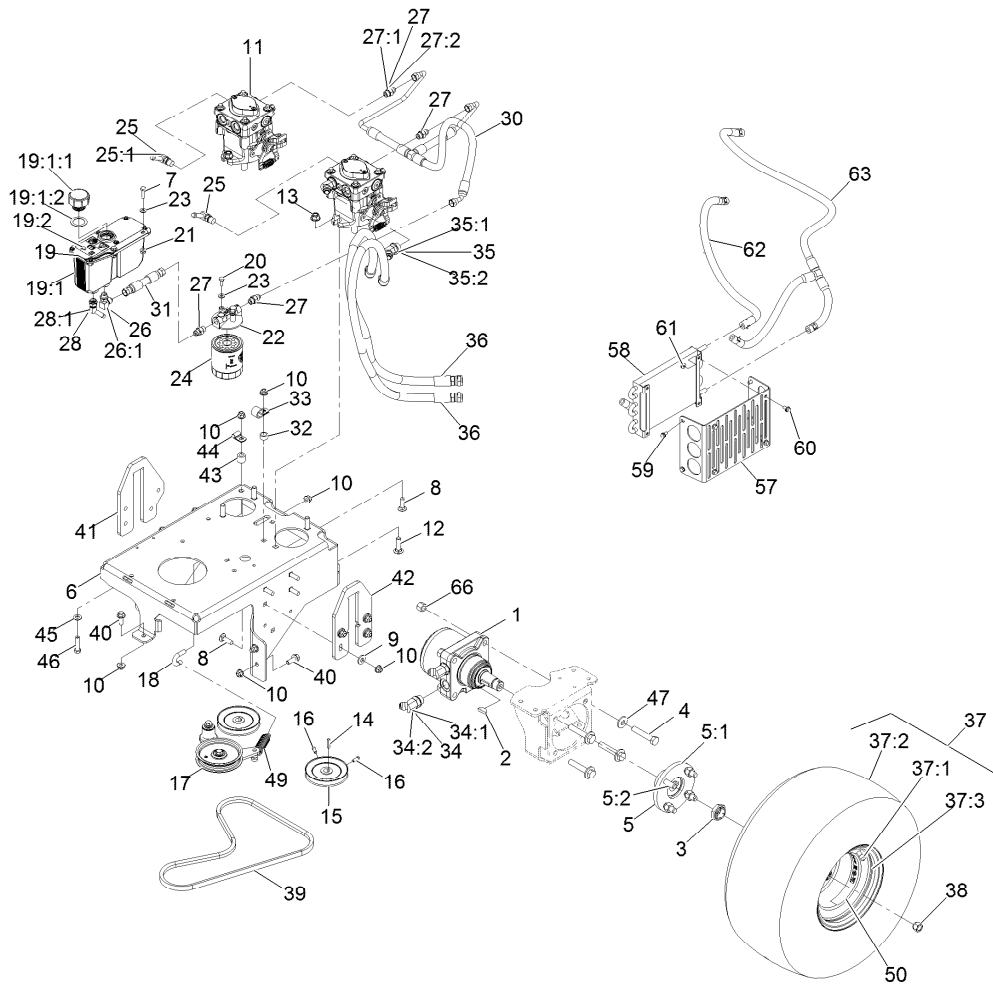
Ref.	Part Number	Qty.	Description	Ref.	Part Number	Qty.	Description
2	116-8748	1	Muffler, Kohler, Efi	24	126-0072	1	Mount, Muffler-Rt
4	68-9400	4	Nut-Flange	25	116-8517	1	Clutch-200 Ft-Lb, 1.125 Bore - No D Driv
7	104-7658	2	Spacer	32	116-5108	1	Oil Drain Hose ASM
8	3234-29	2	Screw-HH Flg 5/16-18 X 1	32:2	353-508	1	Plug-W/O-Ring
9	32128-25	2	Nut-Hex 5/16-18 Side Lock	32:2:1	237-42	1	O-Ring
12	107-4136	1	Washer	33	116-3811-01	1	Bracket-Anchor, Clutch
13	1-603610	1	Washer-Spring Disc 7/16	34	126-0983	4	Screw-Bh-T45
14	3212-6	1	Screw-HH 7/16-20 X 1 1/2 ●	35	2412-147	1	Clamp
15	32144-70	1	Screw-HWH 5/16-18 X 3/4 Tf	36	3231-22	1	Bolt-Carriage 3/8-16 X 1
17	98-5975	2	Washer-Spring Disc 3/8	37	104-8301	1	Nut-Nyloc 3/8-16 Flg
19	3290-378	1	Tie-Cable	38	116-5722	1	Screw-HWHTF
20	110-6697	2	Gasket-Exhaust	39	116-4295	3	Screw-HH M6-1 X 20Mm W/Patch
21	1-807259	1	Key-Machine 1/4 X 1/4 X 1	40	116-5395	1	Sensor-Oxygen, Kohler Efi
22	116-3882	1	Pulley	44	116-5722	2	Screw-HWHTF
23	126-0071	1	Mount, Muffler-Lt				

● Use Pro-Lock, Nut Type (P/N 1-840022, .5ml tube) on threads.



LPG Fuel Assembly

Ref.	Part Number	Qty.	Description	Ref.	Part Number	Qty.	Description
1	126-4414	1	ASM, LP Tank Mount W/ Decal	10	126-4236	1	ASM-Hose, LPG
1:1	126-4228-03	1	Bracket-LPG Tank [black]	11	126-4561	1	Hose, Fuel
1:2	126-3275	1	Decal-LPG Warning	12	2412-87	2	Clamp-Cable
1:3	126-3276	1	Decal-LPG Horiz Tank Spec	13	126-2956	4	Screw-HHF W/ Patch
1:4	126-3277	1	Decal-LPG Fuel Tank Replacement	16	3229-28	1	Screw-CARR
2	126-4506	1	Tank, LP - 33.5 Lb.Horizontal-Al	17	117-2781	1	Grommet
3	126-4888-03	1	Panel, Front	18	126-4569-03	1	Bracket, Filter
4	126-4889-03	1	Guard, Regulator	19	2412-34	1	Clamp-Hose
6	3229-1	2	Bolt-Carriage 1/4-20 X 3/4	20	1-413510	1	Clip-Loom
7	104-7201	3	Nut-Nyloc 1/4-20 Flg	21	32144-70	8	Screw-HWH 5/16-18 X 3/4 Tf
8	116-1073	1	Connector-LPG Tank, LH Thread	22	126-4573	1	ASM, Vent Hose And Harness
9	116-1155	1	Fitting, 1/4 Npt 3/8 Sae 45 DEG Flare	23	97-1271	2	Clamp-Hose
				24	103-2882	1	Decal, Exmark Logo
				25	126-5052	2	Latch, LP Tank



Ground Drive Assembly

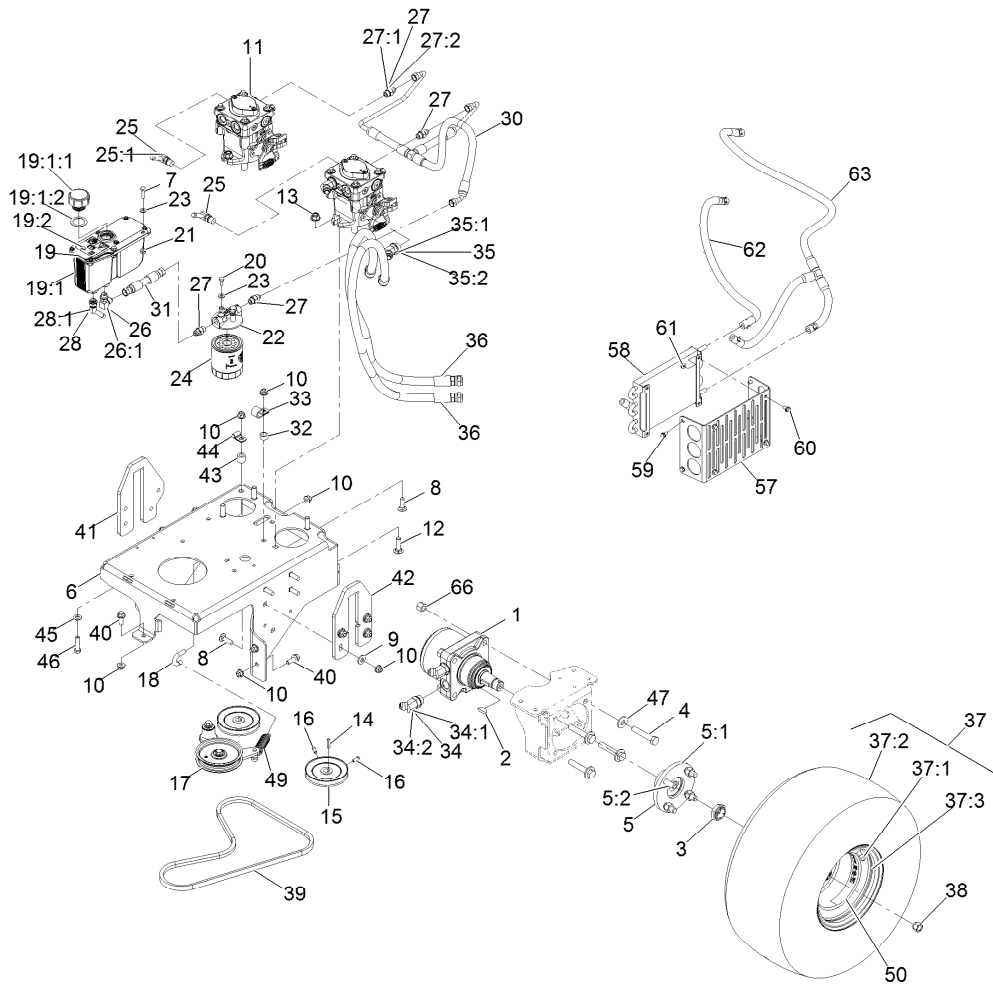
Ref.	Part Number	Qty.	Description	Ref.	Part Number	Qty.	Description
1	126-0524	2	Motor-Wheel	19:1:1	103-1948	1	Cap-Reservoir, HYD
2	3257-8	2	Key-Woodruff	19:1:2	103-1949	1	Gasket-Cap
3	116-1399	2	Locknut	19:2	115-4212	1	Decal-Warning
4	325-11	8	Screw-HH 1/2-13 X 2 3/4	20	321-4	2	Screw-HH 1/4-20 X 3/4
5	18-3209	2	Wheel Hub / Stud ASM	21	32128-32	2	Nut-Hex 1/4-20 Side Lock
5:1	10-6870-03	1	Hub-Wheel	22	104-7836	1	Filter-Head
5:2	10-6830	4	Stud-Type, Drive	23	3256-22	4	Washer-1/4 Sae
6	116-8525-01	1	Base, Engine [red]	24	109-4180	1	Element, Oil Filter
7	321-6	2	Screw-HH 1/4-20 X 1	25	100-4887	2	Fitting-Barbed, 90 DEG
8	3231-25	9	Bolt-Carriage 3/8-16 X 1 1/4	25:1	237-42	1	O-Ring
9	98-5975	8	Washer-Spring Disc 3/8	26	103-1802	1	Fitting-HYD, 90 DEG
10	104-8301	16	Nut-Nyloc 3/8-16 Flg	26:1	1-603921	1	O-Ring-Sae #6
11	116-2572	2	Pump - Hydraulic	27	103-2156	4	Adapter-Straight
12	3232-3	4	Bolt-Carriage 7/16-14 X 1 1/2	27:1	1-603921	1	O-Ring-Sae #6
13	114-8417	4	Nut-HF, NI	27:2	103-1020	1	O-Ring-37 Flare #6
14	1-807272	2	Key-5Mm X 5Mm X 25Mm	28	103-1807	1	Fitting-Barbed, 45 DEG
15	105-5648	2	Pulley-Pump ■	28:1	237-42	1	O-Ring
16	3241-5	4	Setscrew-SQH 1/4-20 X 5/8	30	116-2650	1	Hose Assembly - Charge
17	116-9980	1	Pump Idler ASM	31	116-2604	1	HYD Hose ASM
18	116-8526	1	Anchor, Spring	32	100-1401	1	Spacer-Slide, Spring
19	116-2066	1	ASM,Reservoir W/Decals ▲	33	1-633396	1	Clip-Loom 5/8
19:1		1	Reservoir-HYD ●	34	1-523222	4	Fitting-HYD, 45 DEG
				34:1	1-603919	1	O-Ring-Sae #10
				34:2	1-603992	1	O-Ring-37 Flare #8

● Not serviced separately

▲ Use Exmark Premium Hydro Oil P/N 109-9828 (32oz)

◆ Use Pro-Lock, Nut Type (P/N 1-840022, .5ml tube) on threads.

■ Apply anti-seize compound in bore.



Ground Drive Assembly (continued)

Ref.	Part Number	Qty.	Description
35	1-523221	4	Fitting-HYD, 45 DEG
35:1	1-603920	1	O-Ring-Sae #8
35:2	1-603992	1	O-Ring-37 Flare #8
36	116-6902	4	HYD Hose ASM
37	120-6465	2	Wheel/Tire ASM
37:1	116-4605	1	Rim-8 Inch
37:2	120-6466	1	Tire
37:3	232-27	1	Stem-Valve
38	242-50	8	Nut-Lug 1/2-20
39	114567	1	Belt-V
40	3234-42	5	Screw HHF 3/8-16 X 1
41	116-4922	1	Plate-Lift, RH
42	116-3546	1	Plate, Lift LH
43	121-1760	1	Spacer
44	116-3362	1	Clip-Tube

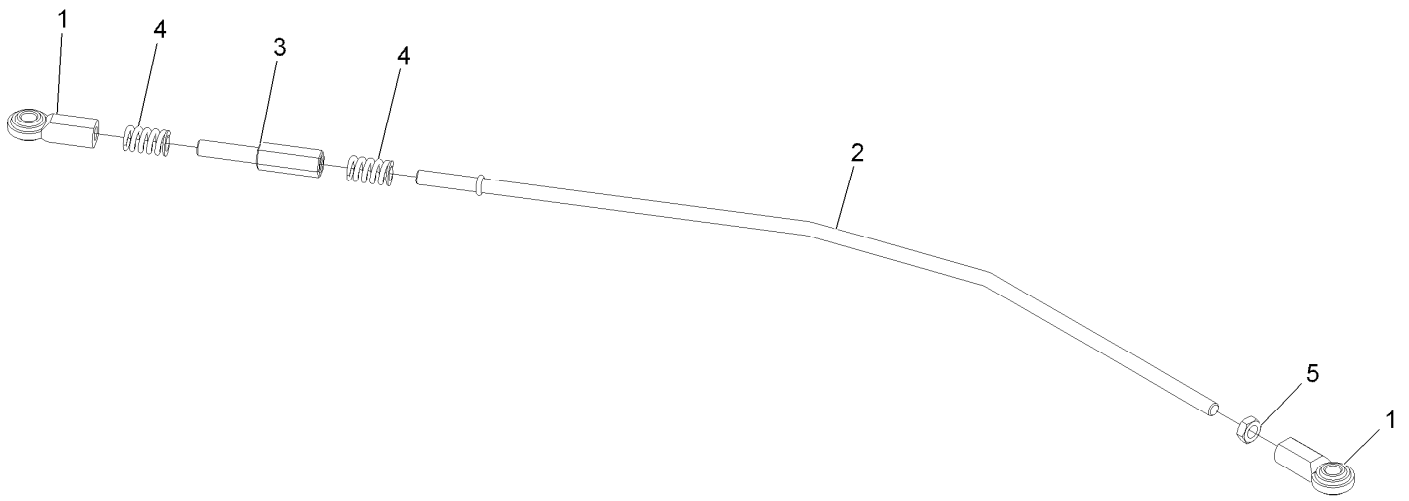
Ref.	Part Number	Qty.	Description
45	3256-24	1	Washer-3/8 Sae
46	323-8	1	Screw-HH 3/8-16 X 1 1/2
47	1-513435	8	Washer-Spring Disc 1/2
49	108-4056	1	Spring-Extension
50	126-2055	2	Decal-Torque Wheel Lug-Hub
57	116-7497-01	1	Bracket, Cooler Mounting
58	116-7274	1	Cooler-Oil
59	32144-4	4	Screw-HWH 1/4-20 X 1/2 Taptite
60	3234-13	4	Screw-HHF
61	32149-2	4	Nut-Keps
62	116-7338	1	Hose-Hydraulic
63	116-7613	1	Hose ASM-HYD LP 3/8
66	3296-23	8	Nut-Nyloc 1/2-13

● Not serviced separately

▲ Use Exmark Premium Hydro Oil P/N 109-9828 (32oz)

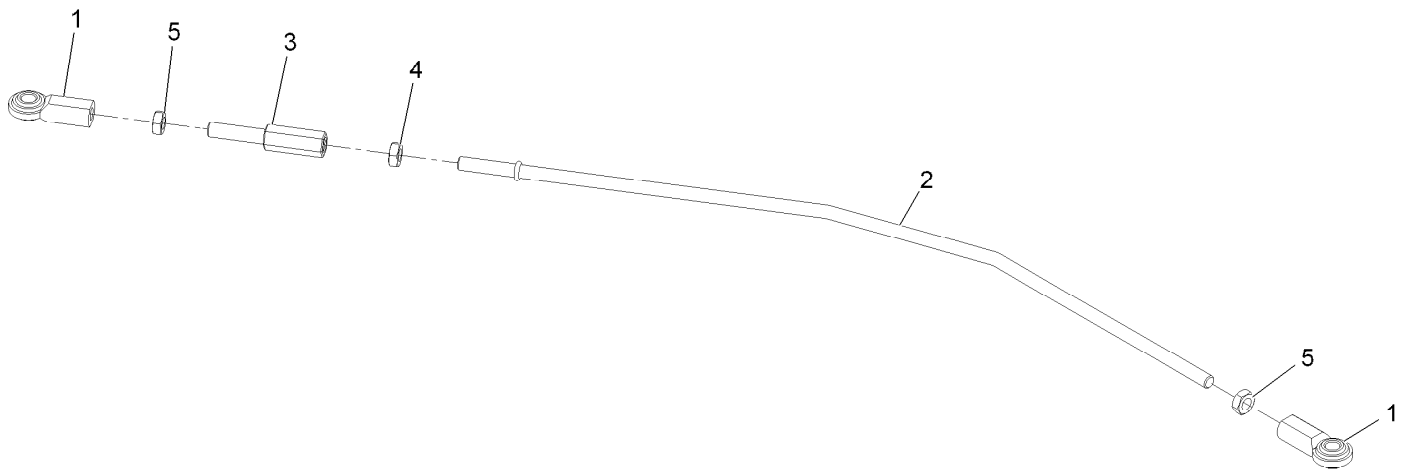
◆ Use Pro-Lock, Nut Type (P/N 1-840022, .5ml tube) on threads.

■ Apply anti-seize compound in bore.



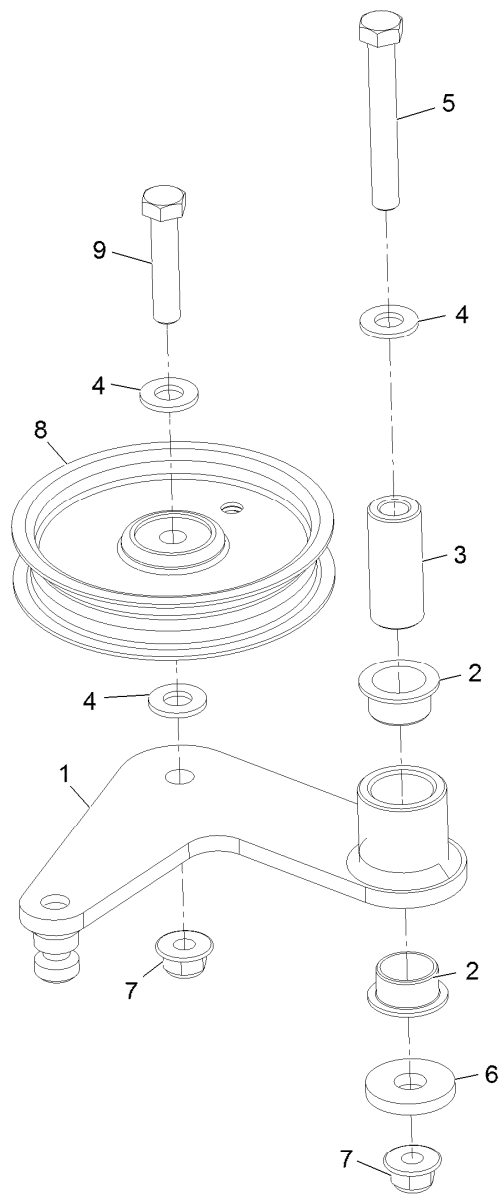
LH Tracking Control Linkage Assembly No. 116-4936

<i>Ref.</i>	<i>Part Number</i>	<i>Qty.</i>	<i>Description</i>
1	103-0608	2	Balljoint
2	116-4938	1	Link-Lower,Motion Control
3	116-4755	1	Rod-Adjustment
4	116-7560	2	Spring-Compression
5	3220-3	1	Nut-Jam 3/8-24



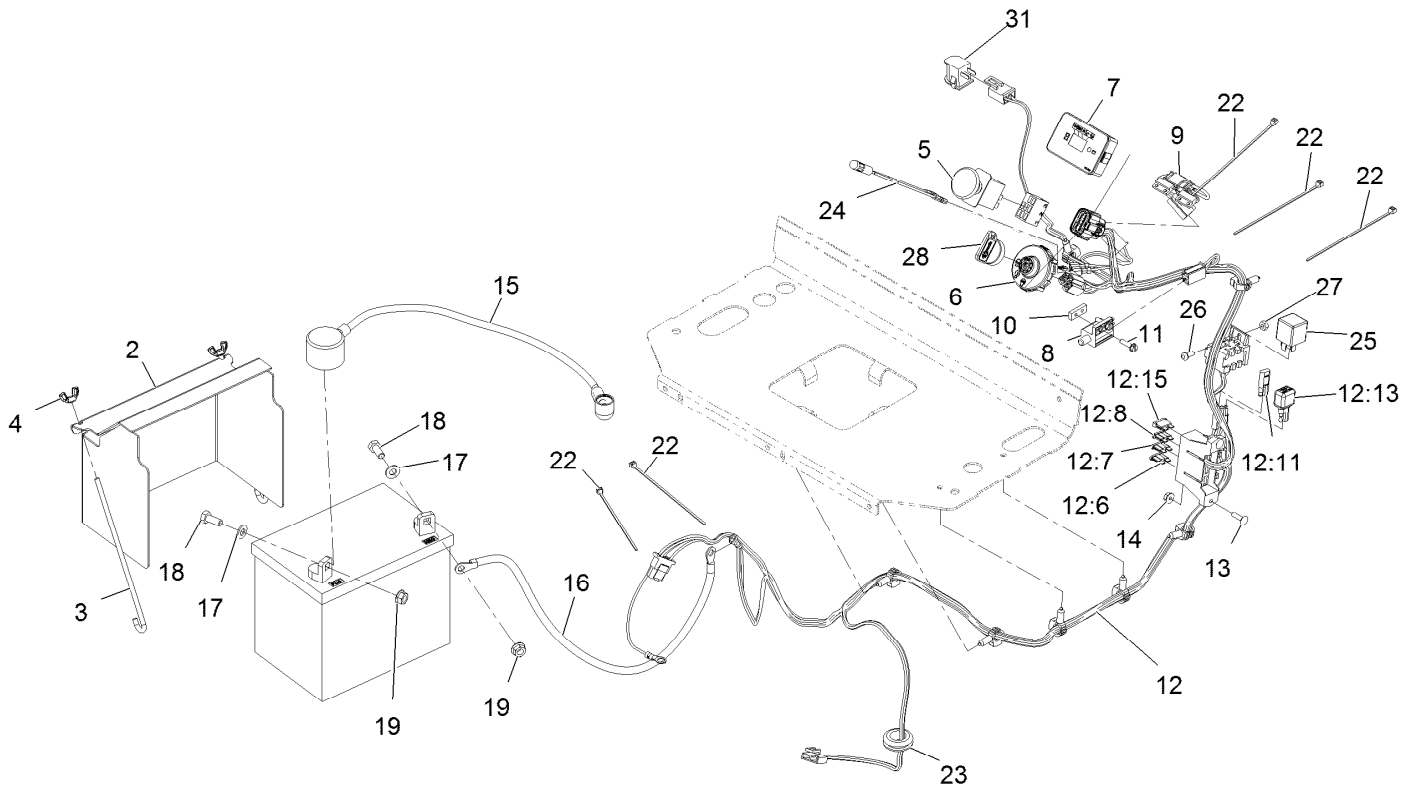
RH Tracking Control Linkage Assembly No. 116-4937

<i>Ref.</i>	<i>Part Number</i>	<i>Qty.</i>	<i>Description</i>
1	103-0608	2	Balljoint
2	116-4938	1	Link-Lower,Motion Control
3	116-4755	1	Rod-Adjustment
4	3220-16	1	Nut-Jam 3/8-24 LH
5	3220-3	2	Nut-Jam 3/8-24



Pump Idler Assembly No. 116-9980

Ref.	Part Number	Qty.	Description
1	116-8717	1	Idler Arm ASM
2	109-8054	2	Bushing-Flanged
3	116-8718	1	Spacer, Pivot
4	3256-24	3	Washer-3/8 Sae
5	323-13	1	Screw-HH 3/8-16 X 2 3/4
6	1-373034	1	Washer
7	104-8301	2	Nut-Nyloc 3/8-16 Flg
8	93-1622	1	Pulley-Idler
9	323-9	1	Screw-HH 3/8-16 X 1 3/4



Electrical Assembly

Ref.	Part Number	Qty.	Description	Ref.	Part Number	Qty.	Description
2	117-0543-01	1	Cover-Battery	12:15	109355	1	Fuse-Blade, 15 Amp
3	1-633651	2	Bolt-Holddown	13	3229-20	2	Screw-CARR
4	1-543792	2	Wingnut-Nyloc 1/4-20	14	3290-148	2	Nut-Whizlock #10-24
5	114-0279	1	Switch-PTO	15	115-3864	1	Cable-Battery, Positive
6	117-2222	1	Switch-Ignition	16	105-0836	1	Cable-Battery, Black
7	117-3886	1	Module-Hour Meter	17	3256-23	2	Washer-5/16 Sae
8	1-513152	1	Switch-N.C.	18	322-3	2	Screw-HH 5/16-18 X 3/4
9	116-2833	1	Harness-Switch, Reed	19	109-5715	2	Nut-Hex Flange 5/16-18
10	1-633181	1	Plate-Tapped	22	1-303287	5	Tie-Cable 5 1/2 (Small)
11	32105-13	2	Screw-HWH #10-24 X 3/4	23	117-2781	1	Grommet
12	126-1216	1	Harness, Wire ■	24	1-643267	1	Indicator-Red Led
12:6	109103	1	Fuse-Blade, 30 Amp	25	1-643275	1	Relay-12Vdc 40 Amp
12:7	109102	1	Fuse-Blade, 25 Amp	26	3250-12	1	Screw-PPH #10-24 X 1/2
12:8	218-578	1	Fuse-Blade, 10 Amp	27	3296-2	1	Nut-Nyloc #10-24
12:11	116-0053	1	Cap-Plug ●	28	103-2106	1	Key-Exmark Logo
12:13	103-3895	1	Diode-Tvs	31	82-2190	1	Switch

● Not illustrated

■ Use dielectric grease on all unsealed connectors and terminals only. Do not apply in sealed connectors.

Notes:

Notes:

Notes:

EXMARK® MAINTENANCE

MAXIMIZE THE PERFORMANCE OF YOUR EXMARK.

4-CYCLE PREMIUM ENGINE OIL

Part No. 116-3373

Both SAE 30 and SAE 10W-30 in one bottle.

Contains increased levels of zinc and phosphorus for better lubricity.

No Viscosity Index Improvers that tend to shear down in high heat.

Synthetic formulation.

Gas & Diesel compatible.

Anti-corrosion additives.

API 'SL' and JASO rated with wet clutch compatibility for other machines.

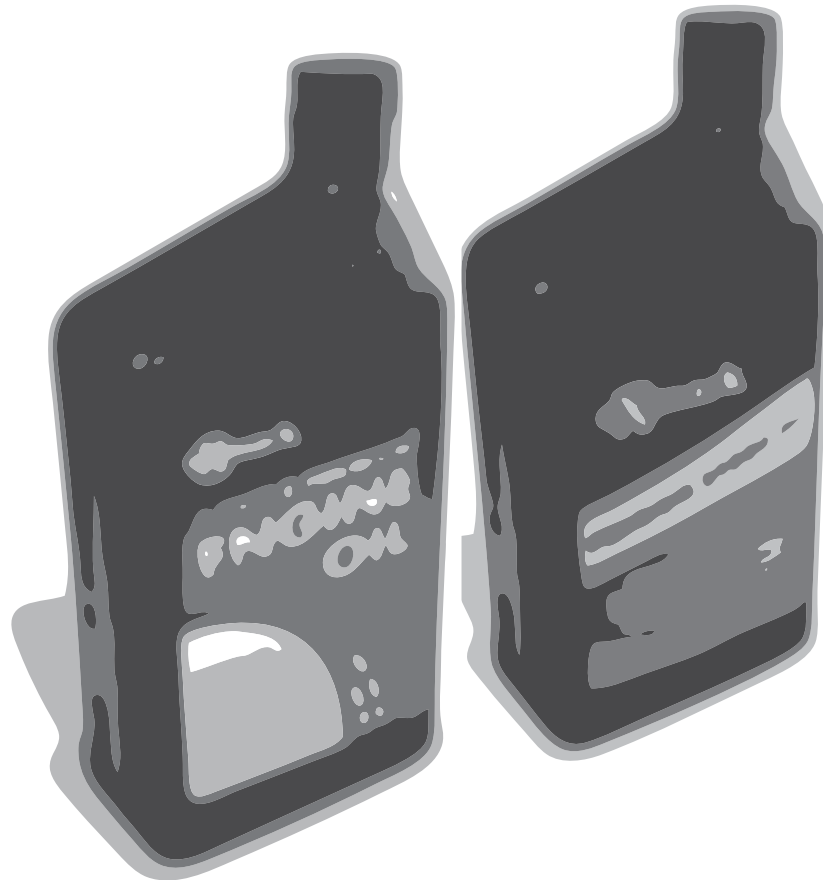
PREMIUM HYDRO OIL

Part No. 109-9828

Commercial quality for tough, high-heat conditions.

Designed specifically for zero-turn mower hydraulic systems.

Superior shear resistance under heavy loads.



Available from your local Exmark dealer. Find your closest dealer at exmark.com

EXMARK ACCESSORIES AND OPTIONS*

MID-MOUNT RIDING ACCESSORIES AND OPTIONS

CUSTOM RIDE SEAT SUSPENSION SYSTEM	OPERATOR CONTROLLED DISCHARGE
FULL SUSPENSION SEAT	SUN SHADE
DECK LIFT ASSIST KIT	TRASH CONTAINER
HITCH KIT	TURF STRIPER
LIGHT KIT	ULTRA VAC COLLECTION SYSTEM
12V POWER PORT	ULTRA VAC QUICK DISPOSAL SYSTEM
MICRO-MULCH SYSTEM	

OUT-FRONT RIDING ACCESSORIES AND OPTIONS

CUSTOM RIDE SEAT SUSPENSION SYSTEM	SNOW BLADE
DUAL-TAIL WHEEL	SNOWBLOWER
FLOOR PAN EXTENDER	SUN SHADE
HITCH KIT	TRASH CONTAINER
LIGHT KIT	ULTRA VAC COLLECTION SYSTEM
MICRO-MULCH SYSTEM	ULTRA VAC QUICK DISPOSAL SYSTEM
ROLL OVER PROTECTION SYSTEM (ROPS)	WEATHER CAB

WALK-BEHIND ACCESSORIES AND OPTIONS

GRASS CATCHER	TURF STRIPER
MICRO-MULCH SYSTEM	STANDON

*Some accessories and options not available for some models.

Place Model No. and Serial No.
Label Here (Included in the Literature
Pack) or Fill in Below

Model No. _____

Serial No. _____

Date Purchased _____

Engine Model No. and Spec. No. _____

Engine Serial No. (E/No) _____

© 2015 Exmark Mfg. Co., Inc.
Industrial Park Box 808
Beatrice, NE 68310
All Rights Reserved

Part No. 4502-271 Rev. A
(402) 223-6300
Fax (402) 223-5489
Printed in the USA.

