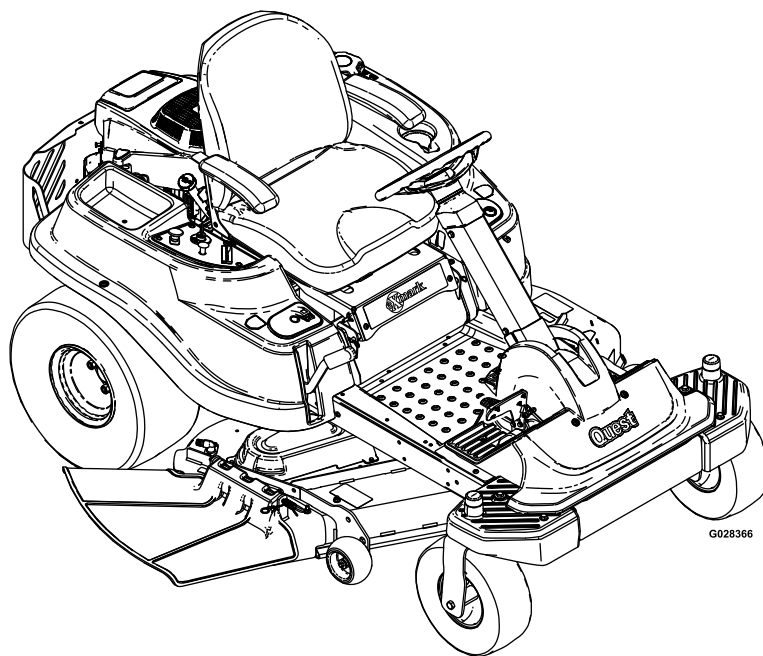




QUEST®

Model No. QSS725GKC42200—Serial No. 31500000 and Up

Picture below may not reflect actual product.



Parts Manual

Ordering Replacement Parts

To order replacement parts, please supply the part number, the quantity, and the description of each part desired.

Understanding Reference Numbers

Each identified part in an illustration has a reference number. The reference number for a part also appears in the parts list, along with other information about the part.

This catalog uses two special reference number formats, one to indicate parts in a service assembly and another to indicate the quantity of a given part in an illustration.

Service Assembly Reference Numbers

Parts in service assemblies have reference numbers in the form a:b. The a represents the reference number of the entire service assembly and the b represents a sequential number unique to each part within the service assembly.

For example, a wheel assembly might be identified by reference number 6, the tire by 6:1, the valve by 6:2, and the wheel by 6:3. When you order the assembly identified by reference number 6, you receive all parts identified by reference numbers 6:1, 6:2, and 6:3. However, you may also order any part individually. Reference numbers of this type appear in illustration and in parts lists.

Reference Numbers Indicating Quantity

In an illustration, if a reference number indicates more than one part, the reference number has the form nX y. The n represents the quantity of the part, the X is the multiplication symbol, and the y represents the reference number.

For example, in an illustration, the reference number 2X 37 means that two of the parts identified by reference number 37 are indicated.

List of Abbreviations

AR: as required	HLH: hex lag head	PTH: phillips truss head
ASM: assembly	HOC: height-of-cut	PTO: power-take-off
BBC: blade brake control	HP: high pressure	RH: right hand
BHTF: button head thread forming	HSBH: hex socket button head	ROPS: roll-over protection system
CARR: carriage	HSFH: hex socket flat head	RRB: rear roller brush
CCW: counter clockwise	HSH: hex socket head	SFH: slotted fillister head
CW: clockwise	HWH: hex washer head	SHH: slotted hex head
DEG: degrees	HWHTF: hex washer head thread forming	SHWH: slotted hex washer head
DPA: Dual Point Adjustment	HYD: hydraulic	SPH: slotted pan head
ECM: electronic control module	LH: left hand	SQH: square head
EXT: external	LP: low pressure	SRH: slotted round head
FH: flat head	LPG: Liquefied Petroleum Gas	STD: standard
GA: gauge	NI: nylon insert	TAP: self tapping
HD: heavy-duty	NPTF: national pipe thread fine	TTH: torx truss head
HF: hex flange	PFH: phillips flat head	
HH: hex head	PPH: phillips pan head	
HHF: hex head flange	PPHTF: phillips pan head thread forming	
HHFTF: hex head flange thread forming	PRH: phillips round head	
HJ: hex jam		

Touch Up Paint

Exmark black touch up spray paint – gloss black.

Exmark red touch up paint (spray paint – P/N 1-850337 - .6 oz liquid bottle – P/N 103-9140).

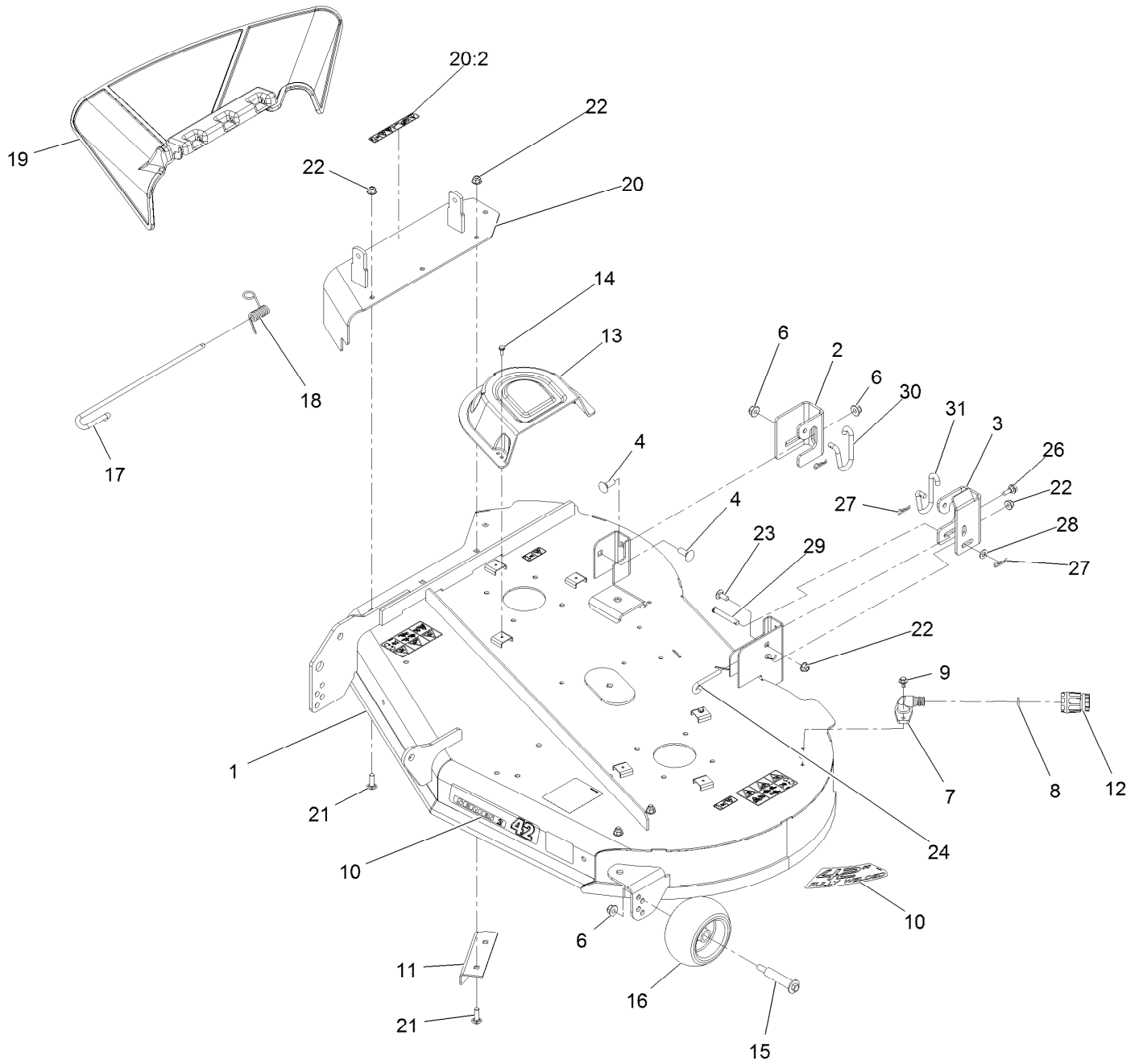


If your Exmark dealer does not have the Exmark part in stock, Exmark will get the parts to the dealer the next business day or the part will be FREE Guaranteed!! (Some restrictions apply. See your participating Exmark Dealer for details.)

Contents

Deck Assembly	4
42 Inch Deck Assembly	6
42 Inch Belt, Blade, and Spindle Assembly	8
Frame, Front Axle and Caster Wheel Assembly	10
13 Inch Wheel and Tire Assembly No. 119-3473	12
Deck Lift Assembly	14
Steering Assembly	16
Steering Column Assembly	18
Speed Control Assembly	20
Gear Assembly	22
Steering Cable Assembly	24
Motion Control Assembly	26
Brake Box Assembly	28
Seat Assembly	30
Seat Assembly (cont)	32
Controls and Fuel Tank Assembly	34
Fuel Delivery Assembly	36
Engine and Muffler Assembly	38
Clutch Assembly	40
Belt and Idler Assembly	42
Hydro Transaxle Drive and Rear Wheel Assembly	44
Left hand Hydro Transaxle Assembly No. 119-3340	46
Right Hand Hydro Transaxle Assembly No. 119-3341	48
Electrical Assembly	50
Harness Assembly	52

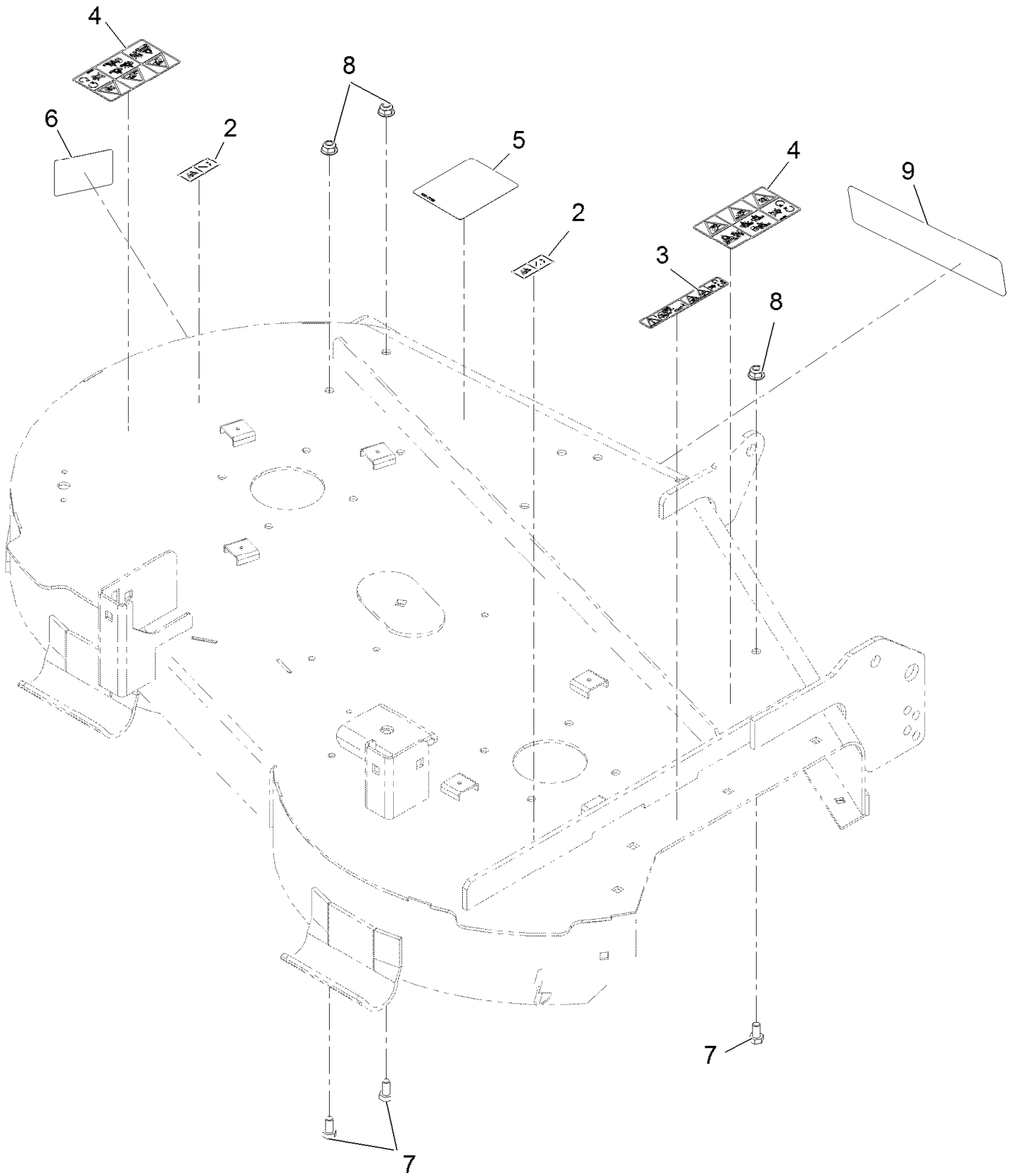
Deck Assembly



Deck Assembly (continued)

<i>Ref.</i>	<i>Part Number</i>	<i>Qty.</i>	<i>Description</i>	<i>Ref.</i>	<i>Part Number</i>	<i>Qty.</i>	<i>Description</i>
1	131-3610	1	42" Deck And Decal ASM	17	109-8854	1	Pin-Chute
2	131-4138	1	Bracket-Hanger, RH	18	121-2983	1	Spring-Torsion
3	131-1091	1	Bracket-Hanger, LH	19	121-0739	1	Deflector-Discharge
4	3231-2	2	Bolt-Carriage 3/8-16 X 1	20	131-3961	1	Cover ASM W/Decal
6	104-8301	4	Nut-Nyloc 3/8-16 Flg	20:2	93-7009	1	Decal-Danger
7	95-2747	1	Fitting-Washout	21	3230-22	4	Bolt-Carriage 5/16-18 X 1 Sp
8	46-6290	1	O-Ring	22	104-8300	6	Nut-Nyloc 5/16-18 Flg
9	46-8560	2	Screw-HHF 1/4-20 X 1/2	23	3230-23	1	Bolt-Carriage 5/16-18 X 3/4 Short Neck
10	126-1771	1	Decal-Series 2 - 42	24	131-0955	1	Rod-Deck Level
11	120-7951-03	1	Baffle-Cutoff	26	120-7024	1	Screw-Shoulder, HHF
12	95-3270	1	Connector-Hose	27	1-806003	3	Hairpin-Cotter
13	108-7889	2	Cover-Belt	28	3256-23	1	Washer-5/16 Sae
14	32144-1	6	Screw-HWH #10-24 X 1/2 Taptite	29	110-0618	1	Pin-Clevis
15	112-3977	2	Bolt-HH Shoulder 3/8-16 X 3.79	30	131-8734	1	Link-Deck Retention (RH)
16	1-603299	2	Roller-Scalp, Anti	31	131-4131	1	Link-Deck Retention (LH)

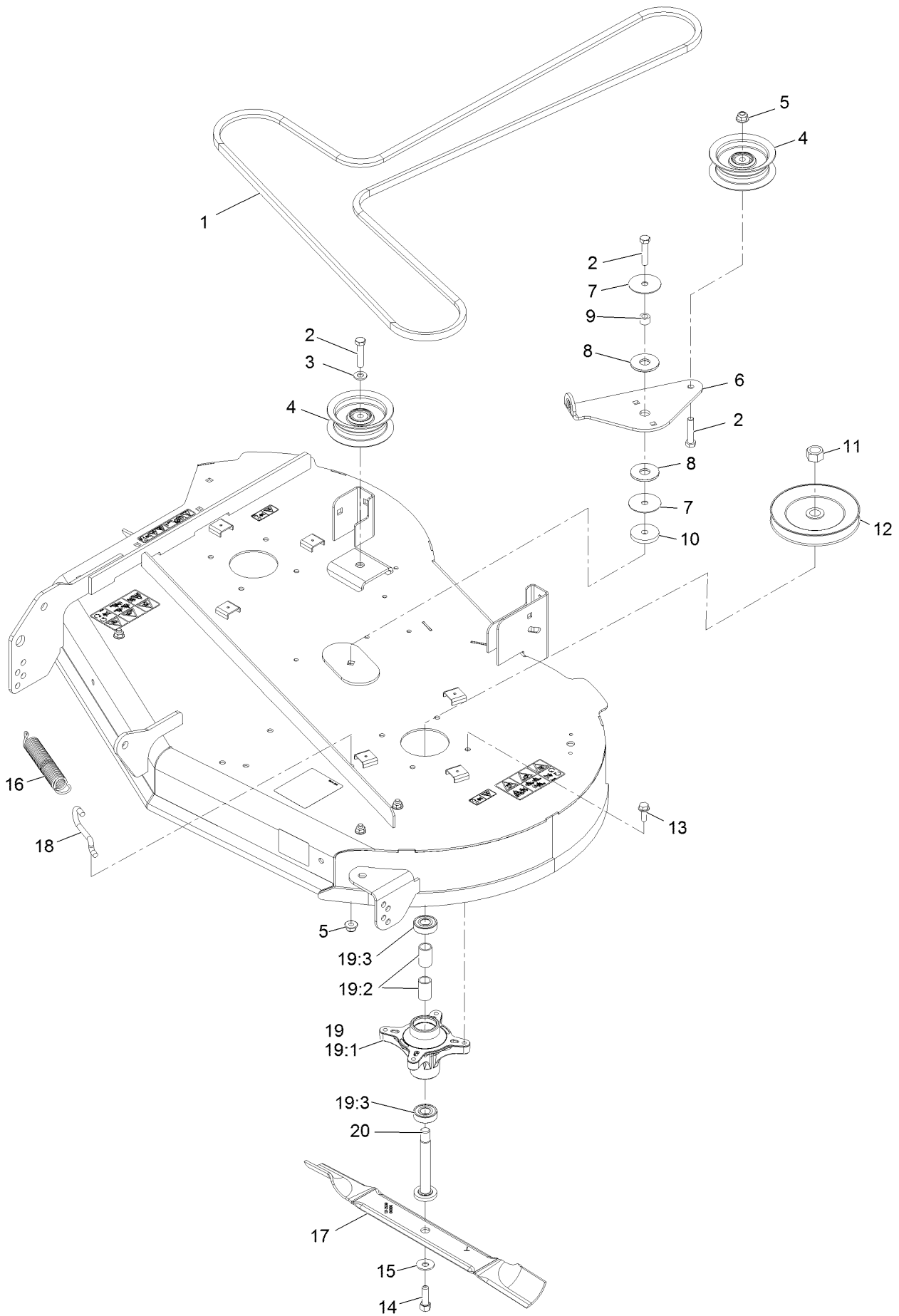
42 Inch Deck Assembly



42 Inch Deck Assembly (continued)

<i>Ref.</i>	<i>Part Number</i>	<i>Qty.</i>	<i>Description</i>	<i>Ref.</i>	<i>Part Number</i>	<i>Qty.</i>	<i>Description</i>
2	114-1606	2	Decal-Danger	6	112-9840	1	Decal-Scalp, Anti
3	93-7009	1	Decal-Danger	7	322-2	3	Screw-HH 5/16-18 X 5/8
4	110-6691	2	Decal-Danger	8	104-8300	3	Nut-Nyloc 5/16-18 Flg
5	105-7015	1	Decal-Routing, Belt	9	126-1771	1	Decal-Series 2 - 42

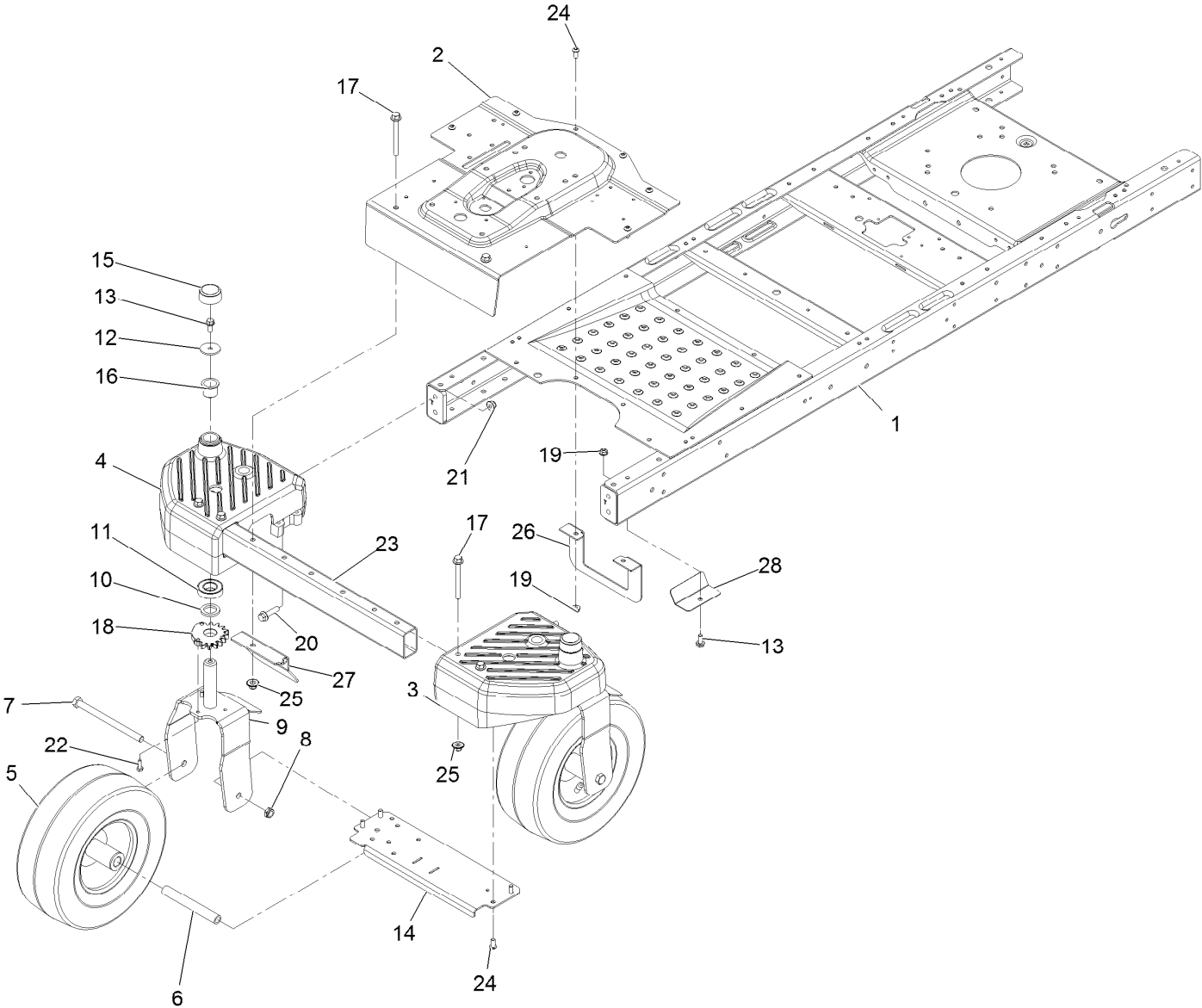
42 Inch Belt, Blade, and Spindle Assembly



42 Inch Belt, Blade, and Spindle Assembly (continued)

<i>Ref.</i>	<i>Part Number</i>	<i>Qty.</i>	<i>Description</i>	<i>Ref.</i>	<i>Part Number</i>	<i>Qty.</i>	<i>Description</i>
1	119-8819	1	V-Belt	13	32144-41	8	Screw-Taptite
2	323-9	3	Screw-HH	14	26-0671	2	Screw-HH
3	3256-24	1	Washer-Flat	15	3290-465	2	Washer-Belleville
4	106-2175	2	Pulley-Idler, Flat	16	106-2177	1	Spring-Extension
5	104-8301	2	Nut-Flange, NI	17	131-3939-03	2	Blade-High Lift, 21.60 In
6	114-8540	1	Arm-Idler	18	88-5970	1	Hook-Return, Spring
7	120-2229	2	Washer	19	121-0751	2	Spindle ASM
8	114-0463	2	Washer-Friction, Composite	19:1	117-7267	1	Spindle
9	115-4986	1	Spacer	19:2	120-7935	2	Spacer
10	110-9981	1	Washer-Plain	19:3	100-1048	2	Bearing-Ball
11	3219-6	2	Nut-Hex	20	117-7268	2	Shaft-Spindle
12	125-5574	2	Pulley				

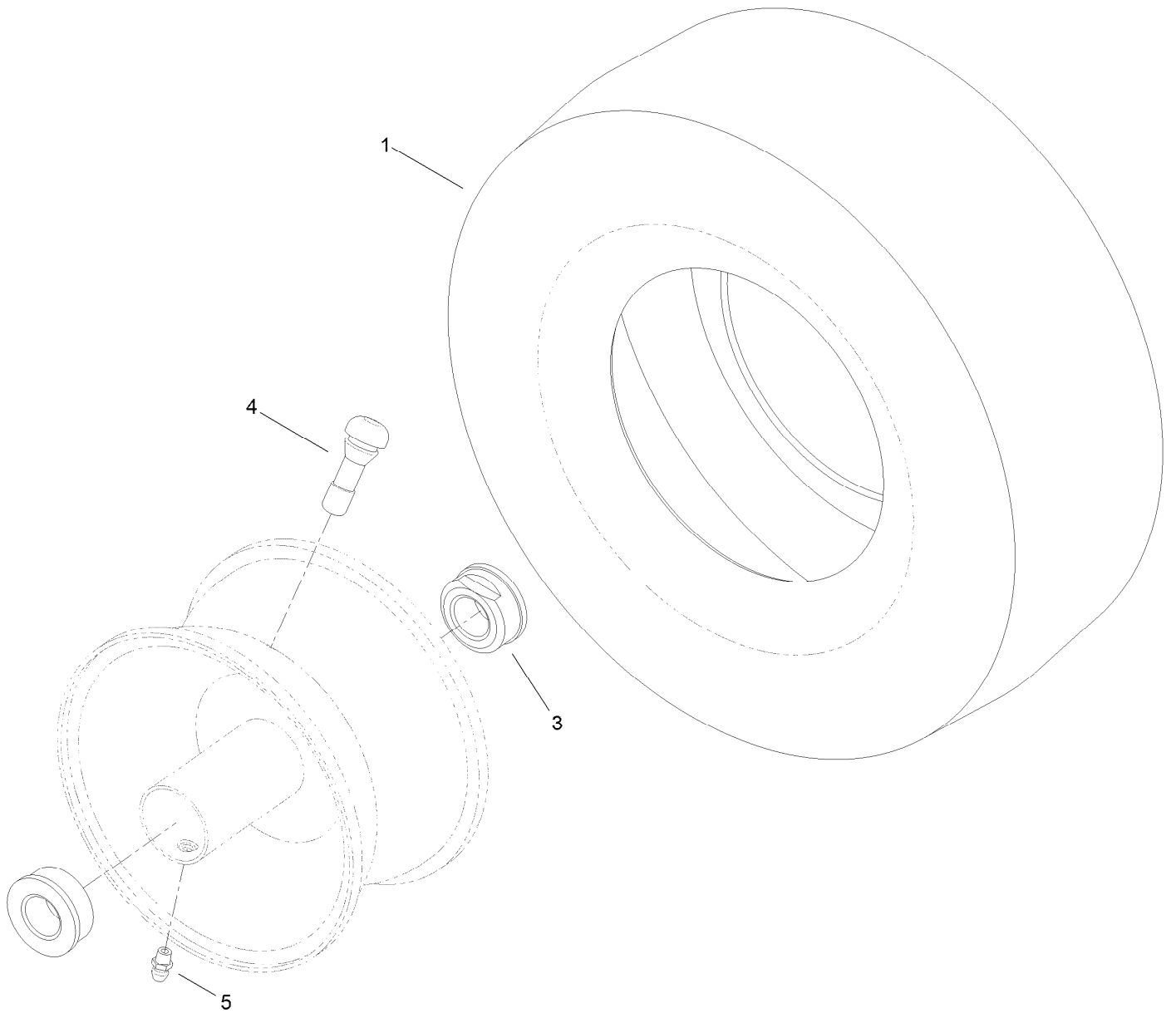
Frame, Front Axle and Caster Wheel Assembly



Frame, Front Axle and Caster Wheel Assembly (continued)

<i>Ref.</i>	<i>Part Number</i>	<i>Qty.</i>	<i>Description</i>	<i>Ref.</i>	<i>Part Number</i>	<i>Qty.</i>	<i>Description</i>
1	130-0804-01	1	Frame ASM	15	130-7015	2	Cap-Caster
2	130-6931-05	1	Pan-Steer, Front	16	126-1963	2	Bushing-Pivot
3	130-0748-05	1	Housing-Spindle, LH	17	115-7660	6	Screw-HHF
4	130-0746-05	1	Housing-Spindle, RH	18	130-0689	2	Gear-Wheel, 15 Teeth
5	119-3473	2	13 Inch Wheel And Tire ASM	19	104-8300	7	Nut-Nyloc 5/16-18 Flg
6	119-3475	2	Spanner	20	114-4681	4	Screw-HHF
7	325-37	2	Screw-HH	21	104-8301	4	Nut-Nyloc 3/8-16 Flg
8	3296-45	2	Nut-Nyloc 1/2-13 Thin	22	321-4	4	Screw-HH 1/4-20 X 3/4
9	130-0670-03	2	Caster Fork ASM	23	130-6902-03	1	Tube-Front
10	117-7394	2	Washer-Thrust	24	131-4080	10	Screw-HSBH
11	109-3678	2	Bearing-Ball	25	109-6658	6	Nut-Nyloc 3/8-16 Flg
12	131-1032	2	Washer-Flat	26	131-8739-01	1	Bracket-Upstop, Long
13	3234-47	3	Screw-HH Flg 5/16-18 X 3/4	27	132-0868-03	1	Guard-Front
14	130-6983-03	1	Bridge Plate ASM	28	132-0901-03	1	Plate-Guard

13 Inch Wheel and Tire Assembly No. 119-3473

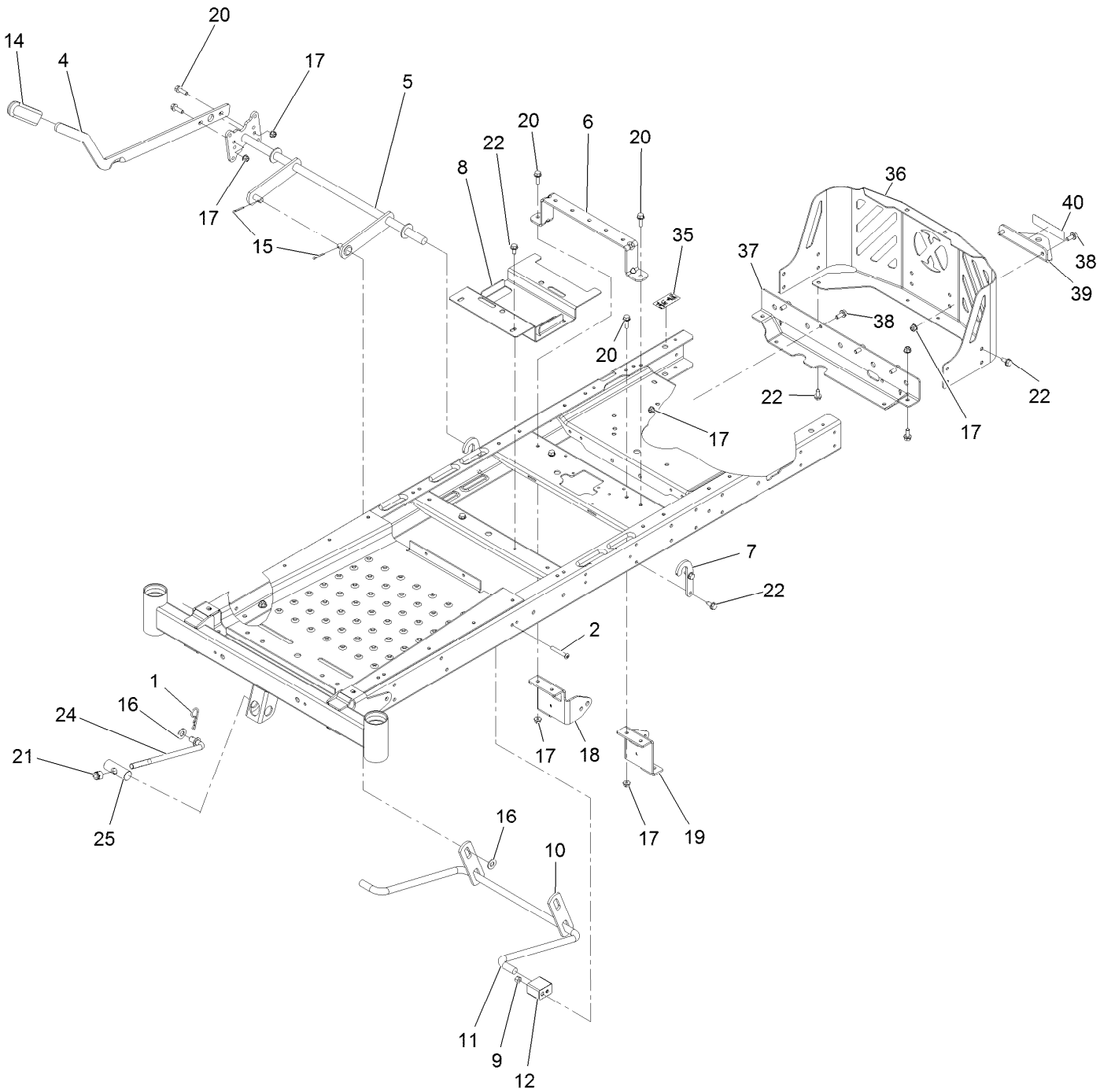


13 Inch Wheel and Tire Assembly No. 119-3473 (continued)

<i>Ref.</i>	<i>Part Number</i>	<i>Qty.</i>	<i>Description</i>	<i>Ref.</i>	<i>Part Number</i>	<i>Qty.</i>	<i>Description</i>
1	119-3471	1	Tire-13 Inch	5	302-5	1	Fitting-Grease
3	114-1640	2	Bushing-Flange	99	232-46	1	Tube ●
4	232-27	1	Stem-Valve				

● Not illustrated

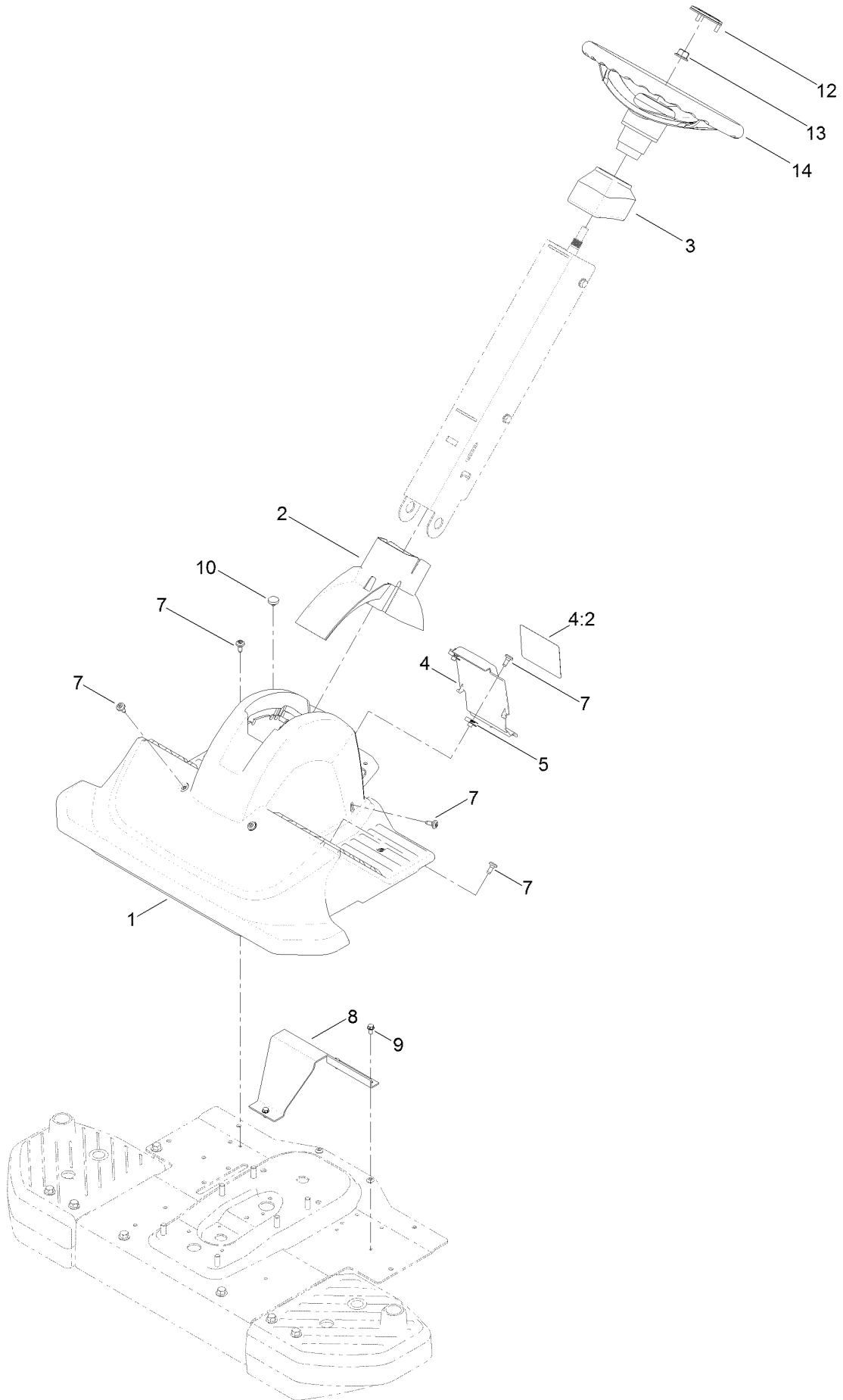
Deck Lift Assembly



Deck Lift Assembly (continued)

<i>Ref.</i>	<i>Part Number</i>	<i>Qty.</i>	<i>Description</i>	<i>Ref.</i>	<i>Part Number</i>	<i>Qty.</i>	<i>Description</i>
1	1-806005	1	Hairpin-Cotter	18	131-0901-01	1	Mount-Hydro, Front Right
2	120-5499	2	Screw-HSBH	19	131-0902-01	1	Mount-Hydro, Front Left
4	119-3427-03	1	Lever-Lift	20	3234-29	6	Screw-HH Flg 5/16-18 X 1
5	117-7346-03	1	Lift-Deck	21	3296-19	1	Nut-Nyloc 1/2-20
6	119-3435-03	1	Brace-Seat, Rear	22	32144-70	16	Screw-HWH 5/16-18 X 3/4 Tf
7	119-8875	2	Bracket-Lift	24	131-3945	1	Rod-Mount, Deck
8	131-0914-03	1	Bracket-Battery	25	119-8810	1	Pin-Pivot
9	3296-29	2	Nut-Nyloc 5/16-18	35	121-2989	2	Decal-Bypass
10	108-7840	2	Link-Lift	36	131-1019-03	1	Guard-Engine, Narrow [black]
11	108-7839	1	Arm-Lift, Rear	37	130-6950-01	1	Crossmember-Rear, Narrow
12	108-7845	2	Block-Pivot	38	3234-47	8	Screw-HH Flg 5/16-18 X 3/4
14	1-633268	1	Grip-Lever	39	117-1232-03	1	Bracket-Hitch
15	3272-11	2	Pin-Cotter 1/8 X 1	40	131-4036	1	Decal
16	3256-26	3	Washer-1/2 Sae				
17	104-8300	14	Nut-Nyloc 5/16-18 Flg				

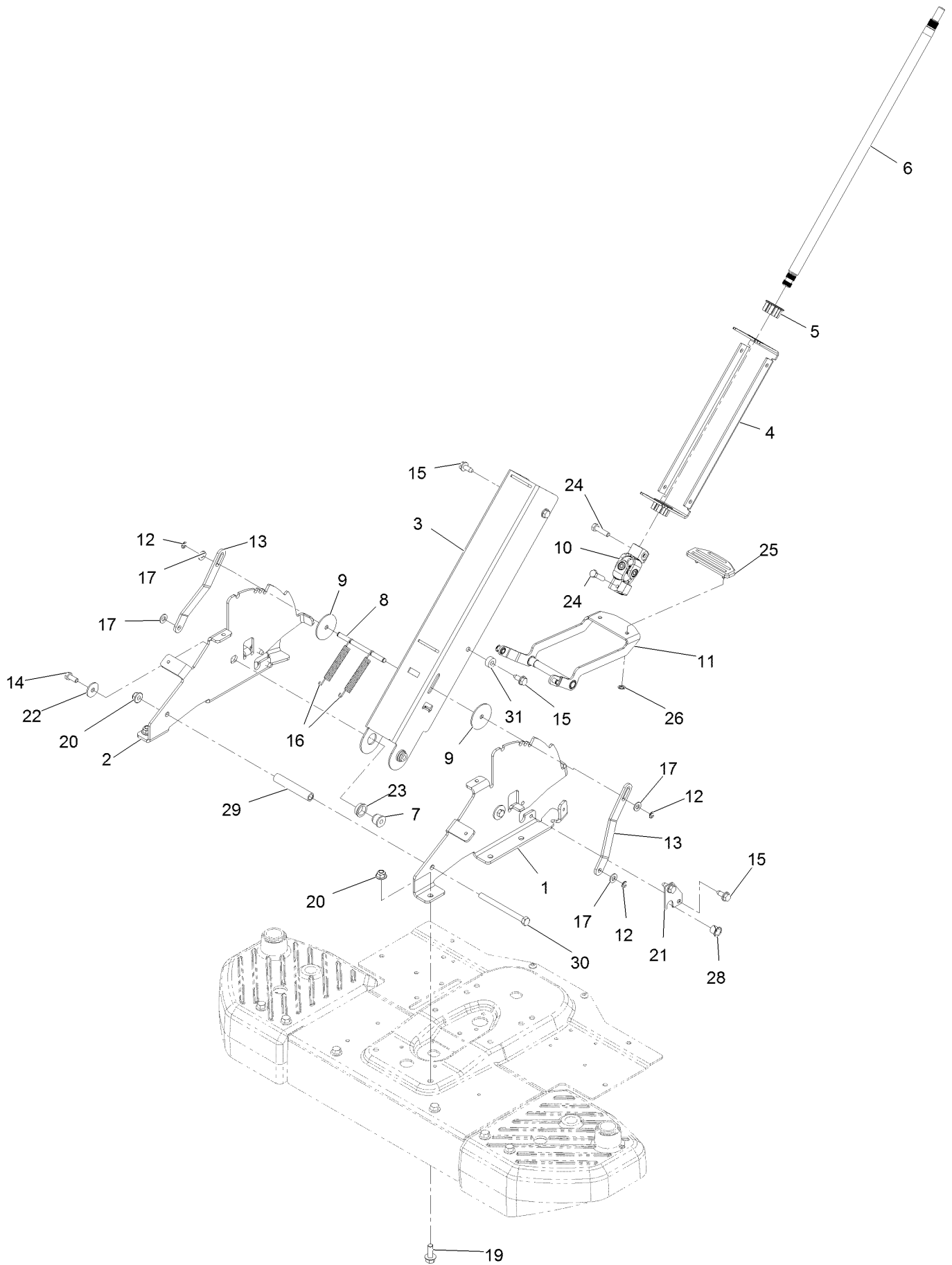
Steering Assembly



Steering Assembly (continued)

<i>Ref.</i>	<i>Part Number</i>	<i>Qty.</i>	<i>Description</i>	<i>Ref.</i>	<i>Part Number</i>	<i>Qty.</i>	<i>Description</i>
1	131-4133	1	Shroud-Styling, Front	8	131-1029-03	1	Support-Footrest
2	131-1028	1	Cover-Pivot, Column	9	32144-4	3	Screw-HWH 1/4-20 X 1/2 Taptite
3	131-1066	1	Cap-Column	10	1-513658	1	Bumper
4	131-4135	1	Rear Cover And Decal ASM	12	131-3630	1	Cap-Wheel, Steering
4:2	132-0870	1	Decal-Danger	13	99-5107	1	Nut-Lock 1/2-13
5	107069	2	Nut-Retainer-Panel 1/4-20	14	131-0957	1	Wheel-Steering
7	120-7950	9	Screw-Shoulder				

Steering Column Assembly

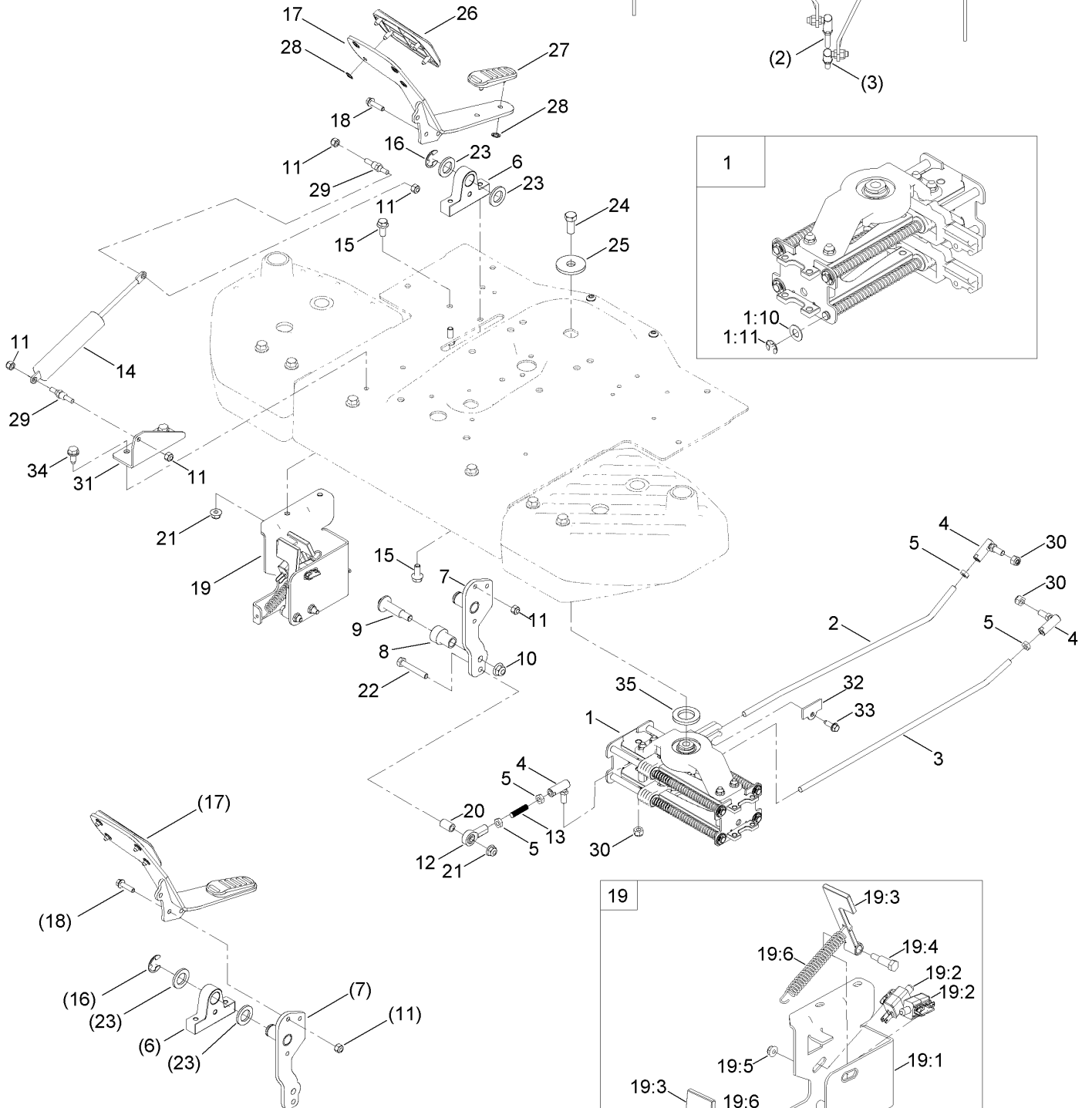
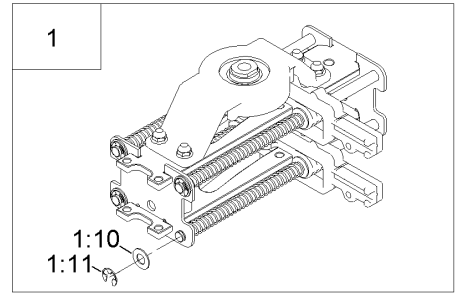
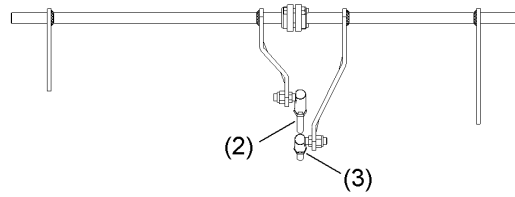


Steering Column Assembly (continued)

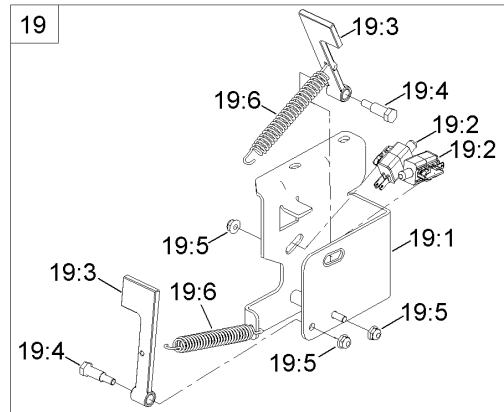
<i>Ref.</i>	<i>Part Number</i>	<i>Qty.</i>	<i>Description</i>	<i>Ref.</i>	<i>Part Number</i>	<i>Qty.</i>	<i>Description</i>
1	131-1052-03	1	Bracket-Pivot, Column (LH)	16	130-6998	2	Spring-Extension
2	131-1053-03	1	Bracket-Pivot, Column (RH)	17	3256-23	4	Washer-5/16 Sae
3	131-1054-01	1	Column-Front	19	3234-11	6	Screw-HH Flg 3/8-16 X 1
4	131-1055-01	1	Column-Back	20	104-8301	7	Nut-Nyloc 3/8-16 Flg
5	93-1146	2	Bushing-Steering, Upper	21	131-1043	2	Plate-Retainer
6	125-5507	1	Shaft-Steering, Upper	22	5-4460	2	Washer-Pivot
7	131-1056	2	Spacer-Pivot, Column	23	99-4243	2	Bushing-Flange
8	131-1050	1	Rod-Plunger	24	322-6	2	Screw-HH 5/16-18 X 1 1/4
9	131-8729	2	Washer-Shaft, Tilt	25	131-4096	1	Pad-Tilt Pedal
10	131-1030	1	U-Joint ASM	26	32112-6	2	Nut-Push
11	131-7726	1	Release Pedal ASM	28	256-257	2	Bushing-Nyliner
12	701197	4	E-Ring	29	131-3697	1	Spacer
13	131-1049	2	Plate-Plunger	30	323-23	1	Screw-HH 3/8-16 X 4-1/2
14	322-3	2	Screw-HH 5/16-18 X 3/4	31	121-1759	2	Spacer
15	32144-70	8	Screw-HWH 5/16-18 X 3/4 Tf				

Speed Control Assembly

BALLJOINT ORIENTATION
REAR VIEW



FOOT PEDAL ASSEMBLY

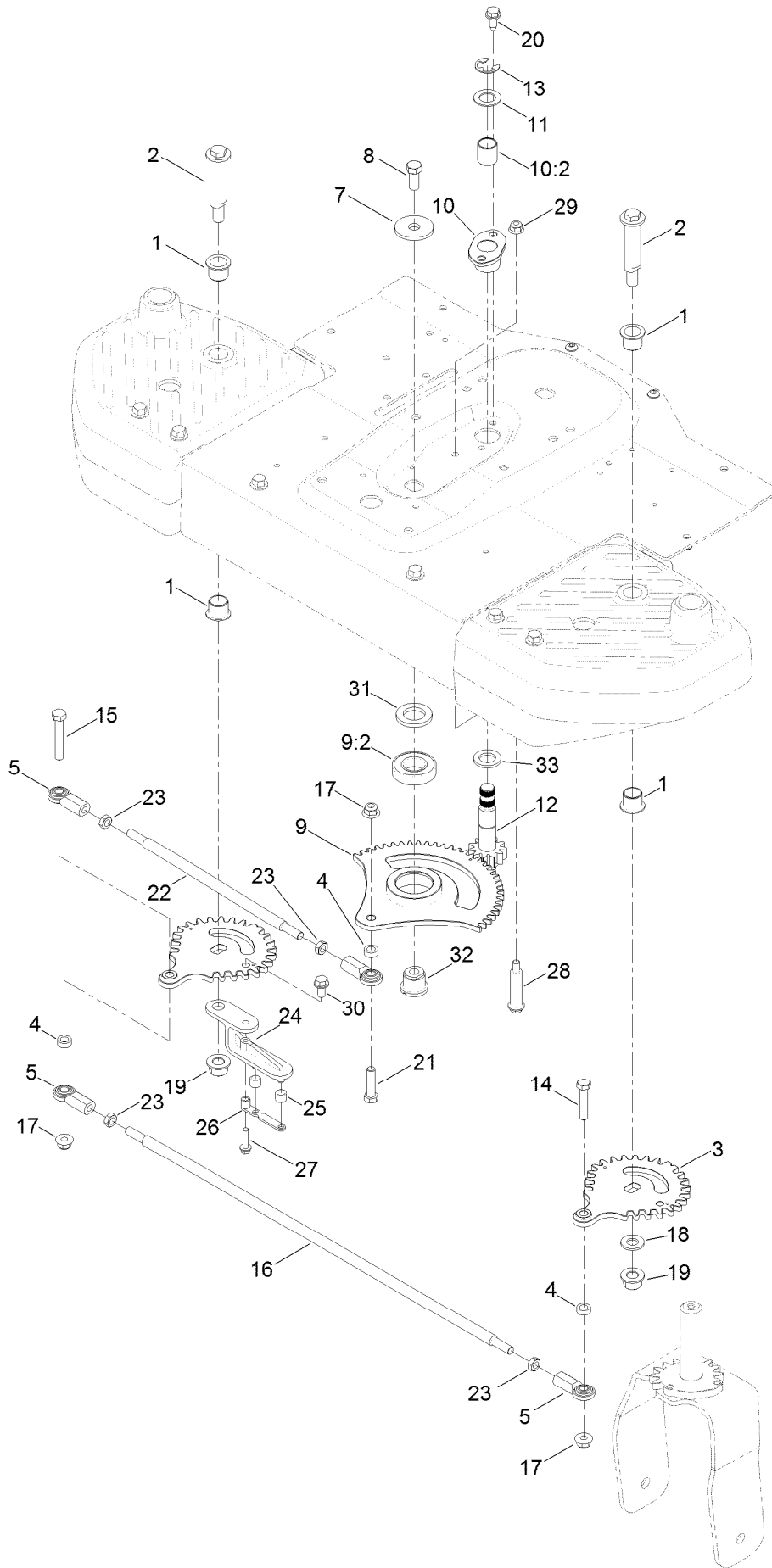


Speed Control Assembly (continued)

<i>Ref.</i>	<i>Part Number</i>	<i>Qty.</i>	<i>Description</i>	<i>Ref.</i>	<i>Part Number</i>	<i>Qty.</i>	<i>Description</i>
1	131-0904	1	Speed Control ASM	19:2	110-6765	2	Switch ●
1:10	131-8667	12	Washer-Thrust ●	19:3	130-0782	2	Arm-Switch ●
1:11	32120-18	8	E-Ring ●	19:4	119-2309	2	Bolt-Shoulder ●
2	127-0115	1	Rod-Hydro, RH	19:5	104-7201	3	Nut-Flange, NI ●
3	127-0116	1	Rod-Hydro, LH	19:6	120-7027	2	Spring-Extension ●
4	2411-33	3	Balljoint-RH (W/Grommet)	20	131-1034	1	Spacer
5	3220-2	4	Nut-Jam	21	104-8300	3	Nut-Flange, NI
6	130-6887	1	Mount-Pedal Pivot	22	322-10	1	Screw-HH
7	125-5517	1	Pivot Lever ASM	23	70-1160	2	Washer
8	127-3397	1	Roller	24	324-4	1	Screw-HH
9	56-6590	1	Bolt-Wheel	25	84-1560	1	Washer-Thrust
10	104-8301	1	Nut-Flange, NI	26	98-9040	1	Pad-Toe, Hydro Pedal
11	3296-42	6	Nut-Lock, NI	27	98-9039	1	Pad-Heel, Hydro Pedal
12	1-543017	1	Balljoint-RH	28	32112-6	6	Nut-Push
13	130-6906	1	Rod-Threaded	29	110-6810	2	Stud-Damper
14	131-0958	1	Damper-Non Cavitating	30	3296-4	3	Nut-Lock
15	3234-47	4	Screw-HHF	31	130-6910-03	1	Bracket-Damper
16	32151-48	1	E-Ring	32	131-1041	2	Cover-End Rod
17	125-3065-01	1	Traction Pedal ASM	33	32144-44	2	Screw-HWH, Thread Roll
18	120-4654	2	Screw-HHF	34	32144-70	2	Screw-HWHTF
19	131-0903	1	Neutral Return ASM	35	131-8736	1	Spacer-Bearing
19:1	132-0909-03	1	Bracket-Switch ●				

● Not illustrated

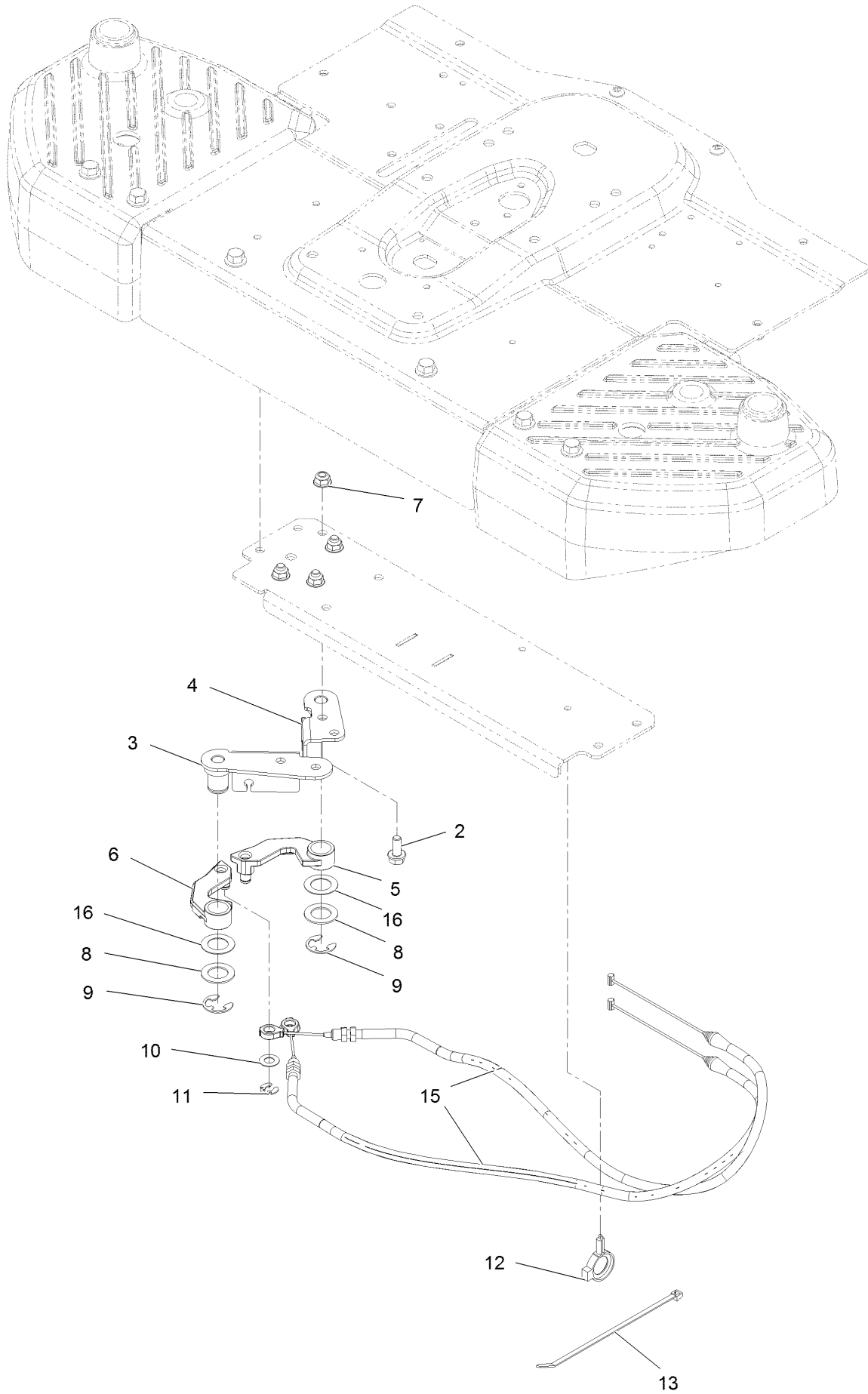
Gear Assembly



Gear Assembly (continued)

<i>Ref.</i>	<i>Part Number</i>	<i>Qty.</i>	<i>Description</i>	<i>Ref.</i>	<i>Part Number</i>	<i>Qty.</i>	<i>Description</i>
1	103-4398	4	Bearing-Flange, Iglide	17	104-8301	3	Nut-Flange, NI
2	131-1031	2	Bolt-Shoulder	18	3256-26	1	Washer-Flat
3	130-0830	2	Gear-Wheel, 30 Teeth	19	99-5107	2	Nut-Lock
4	83-1050	3	Spacer	20	32144-70	2	Screw-HWHTF
5	103-0608	4	Joint-Ball, End	21	323-8	1	Screw-HH
7	84-1560	1	Washer-Thrust	22	131-1036	1	Rod-Steering
8	324-4	1	Screw-HH	23	3220-3	4	Nut-HJ
9	131-8731	1	Sector Gear ASM	24	130-6878	1	Lever-Cable
9:2	109-3678	1	Bearing-Ball	25	131-3951	2	Bushing
10	131-8733	1	Flange Bearing ASM	26	131-3950	1	Strap-Roller
10:2	115-7019	1	Bushing-Straight	27	32144-86	1	Screw-HWHTF
11	119-7640	1	Washer-Thrust	28	100-9880	1	Bolt-Shoulder
12	125-5508	1	Lower Steering Shaft ASM	29	104-8300	1	Nut-Flange, NI
13	32151-48	1	E-Ring	30	32144-14	1	Screw-HWHTF
14	323-9	1	Screw-HH	31	131-8736	1	Spacer-Bearing
15	323-11	1	Screw-HH	32	131-8737	1	Pivot-Bearing
16	131-1035	1	Rod-Cross	33	70-1160	1	Washer

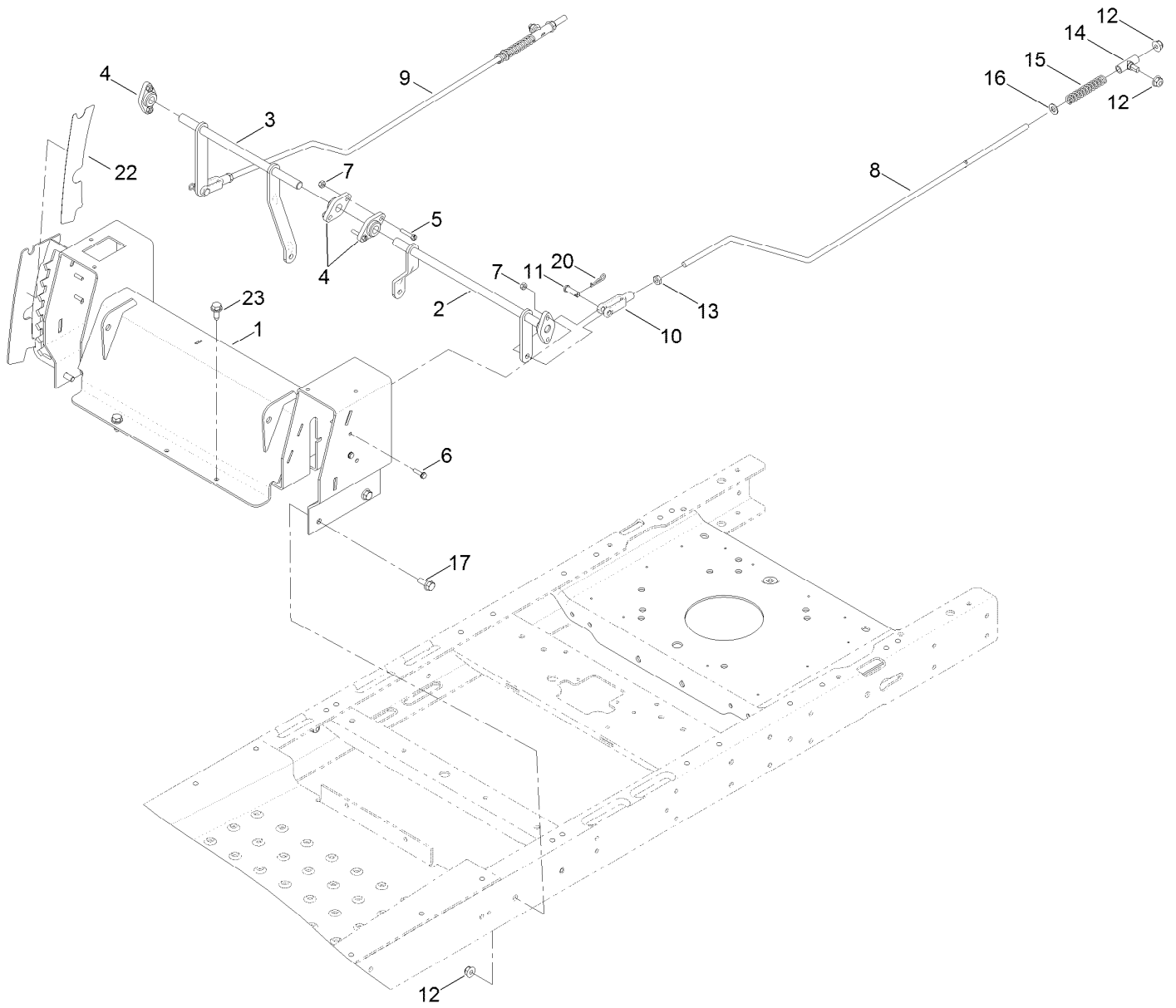
Steering Cable Assembly



Steering Cable Assembly (continued)

<i>Ref.</i>	<i>Part Number</i>	<i>Qty.</i>	<i>Description</i>	<i>Ref.</i>	<i>Part Number</i>	<i>Qty.</i>	<i>Description</i>
2	3234-47	4	Screw-HHF	9	32151-48	2	E-Ring
3	131-3952	1	Cable Bracket ASM	10	37-8080	2	Washer-Thrust
4	131-3953	1	Cable Bracket ASM	11	32151-47	2	Ring-Retaining
5	131-3623	1	Arm-Cable,RH	12	105-1853	1	Clamp-Hose
6	131-3647	1	Arm-Cable,LH	13	614249	1	Tie-Cable
7	104-8300	4	Nut-Flange, NI	15	127-0118	2	Cable-Steering
8	119-7640	2	Washer-Thrust	16	3-6498	2	Washer-Thrust

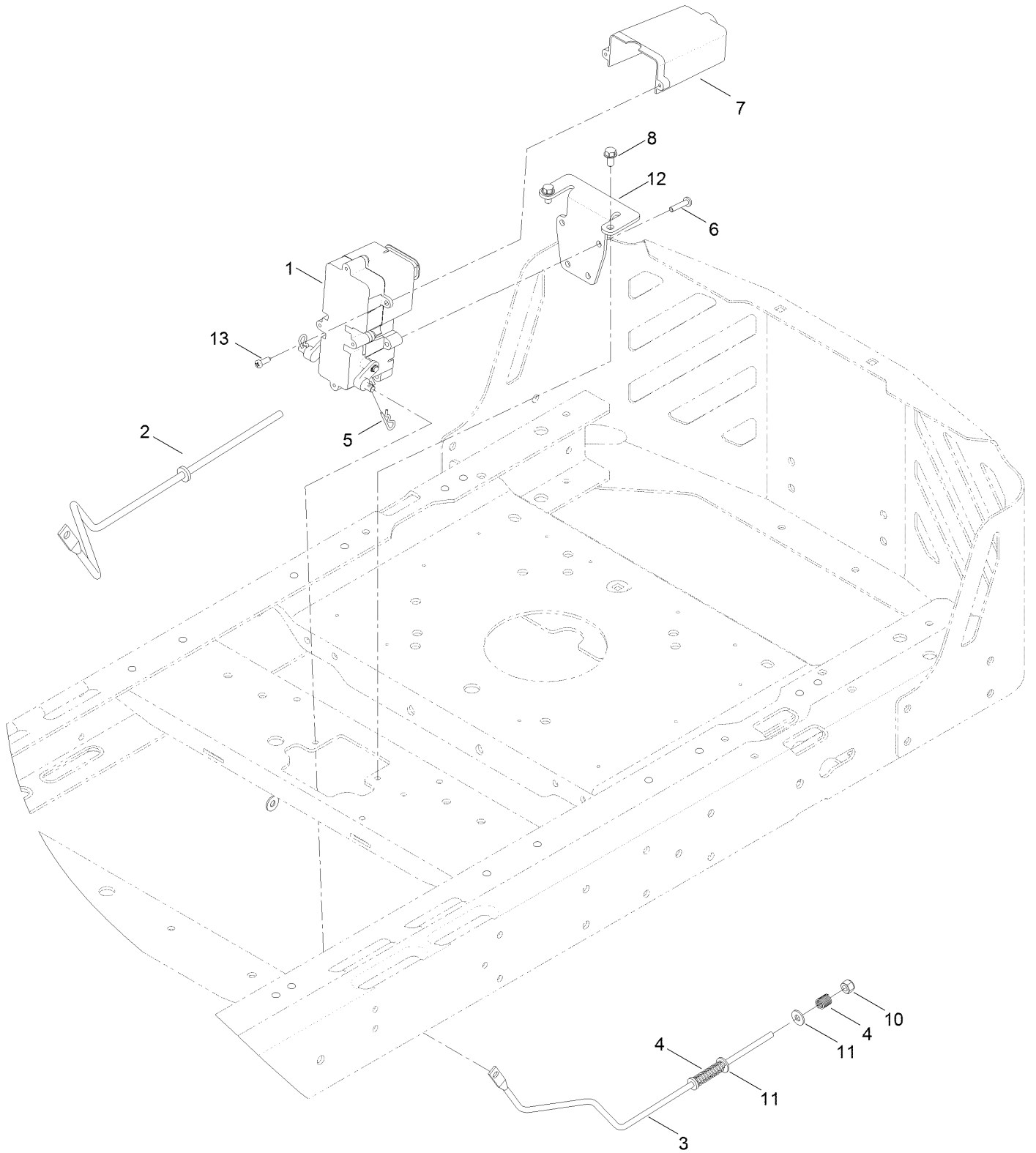
Motion Control Assembly



Motion Control Assembly (continued)

<i>Ref.</i>	<i>Part Number</i>	<i>Qty.</i>	<i>Description</i>	<i>Ref.</i>	<i>Part Number</i>	<i>Qty.</i>	<i>Description</i>
1	130-6898-03	1	Control Box ASM	11	1-808280	2	Pin-Clevis
2	130-6903	1	Bellcrank-LH	12	104-8300	8	Nut-Flange, NI
3	130-6904	1	Bellcrank-RH	13	3220-2	2	Nut-Jam
4	127-0146	4	Bearing- Flange	14	119-8842	2	Mount-Rod, Hydro
5	32105-12	2	Screw	15	1-603807	2	Spring-Return, Neutral
6	3290-126	4	Screw-HWH	16	3256-23	2	Washer-Flat
7	3296-2	6	Nut-Lock, NI	17	3234-47	4	Screw-HHF
8	125-1812	1	Rod-Hydro, LH	20	1-806003	2	Pin-Cotter
9	127-3378	1	Rod-Hydro, RH	22	119-8871	1	Decal
10	1-303105	2	Yoke-Adjustable	23	32144-70	2	Screw-HWHTF

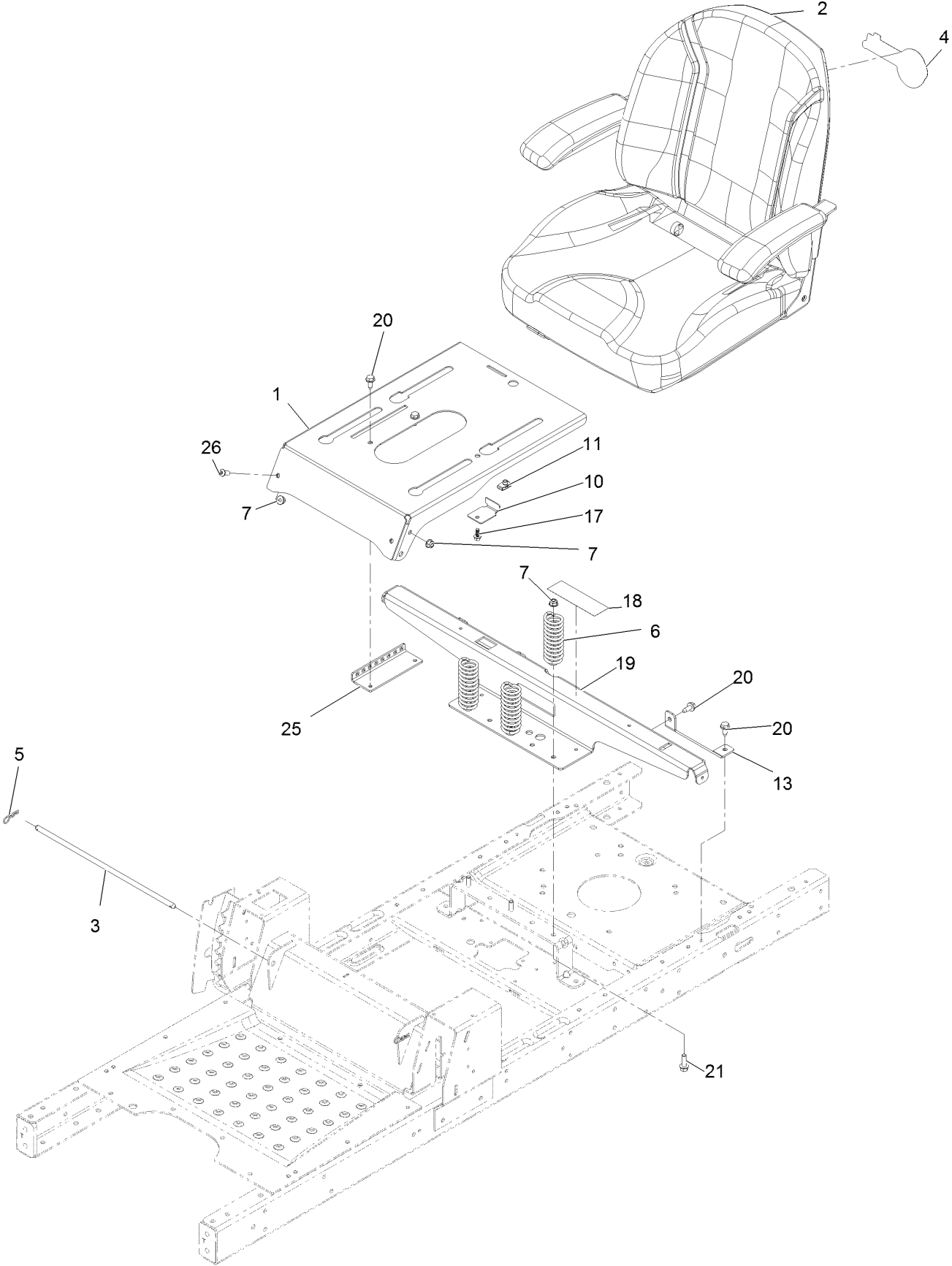
Brake Box Assembly



Brake Box Assembly (continued)

<i>Ref.</i>	<i>Part Number</i>	<i>Qty.</i>	<i>Description</i>	<i>Ref.</i>	<i>Part Number</i>	<i>Qty.</i>	<i>Description</i>
1	130-0795	1	Brake Box ASM	7	130-6974	1	Cover-Connector
2	121-2974	1	Rod-Brake, RH	8	32144-4	2	Screw-HWH
3	121-2975	1	Rod-Brake, LH	10	3296-42	2	Nut-Lock, NI
4	117-1169	4	Spring-Compression	11	119-8952	6	Washer
5	3290-307	2	Pin-Cotter	12	130-0790-03	1	Bracket-Mount, Brake
6	32144-36	4	Screw-PPH	13	94-4496	2	Screw-PPH

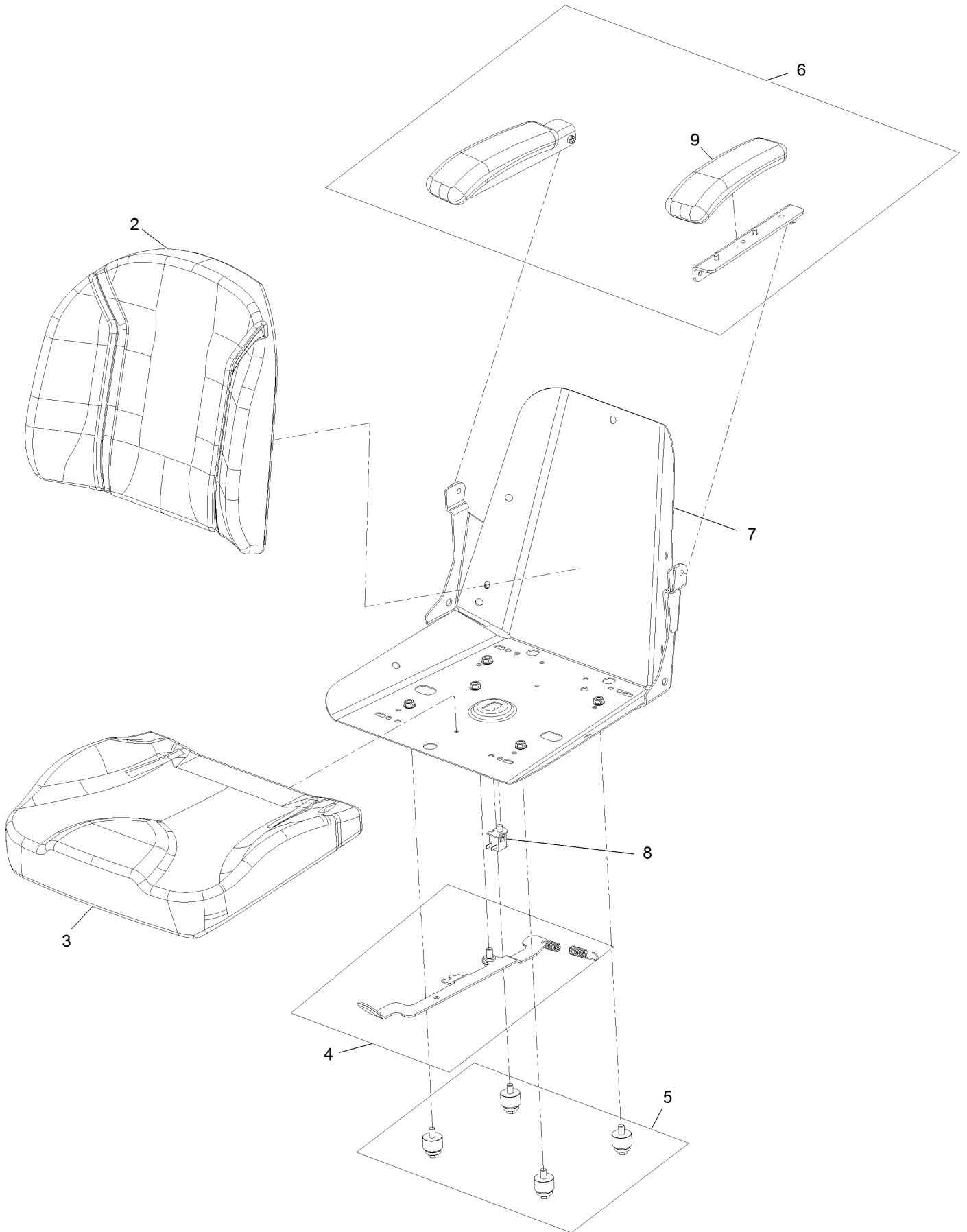
Seat Assembly



Seat Assembly (continued)

<i>Ref.</i>	<i>Part Number</i>	<i>Qty.</i>	<i>Description</i>	<i>Ref.</i>	<i>Part Number</i>	<i>Qty.</i>	<i>Description</i>
1	132-0919-03	1	Pan-Seat	13	119-3431-03	2	Support-Tank, Rear
2	131-4148	1	Seat ASM, Exmark	17	99-6810	1	Screw-HH 1/4-20 X 5/8
3	119-3433	1	Rod-Pivot, Narrow	18	106-8717	1	Decal-Service
4	120-5464	1	Decal	19	131-1040-03	1	Support-Pod
5	3290-250	2	Pin-Cotter	20	32144-70	6	Screw-HWH 5/16-18 X 3/4 Tf
6	92-7054	3	Spring-Compression	21	3234-29	3	Screw-HH Flg 5/16-18 X 1
7	104-8300	5	Nut-Nyloc 5/16-18 Flg	25	131-4008-03	1	Bracket-Latch, Seat
10	131-1038	1	Bracket-Stop, Seat	26	131-4080	2	Screw-HSBH
11	107069	1	Nut-Retainer-Panel 1/4-20				

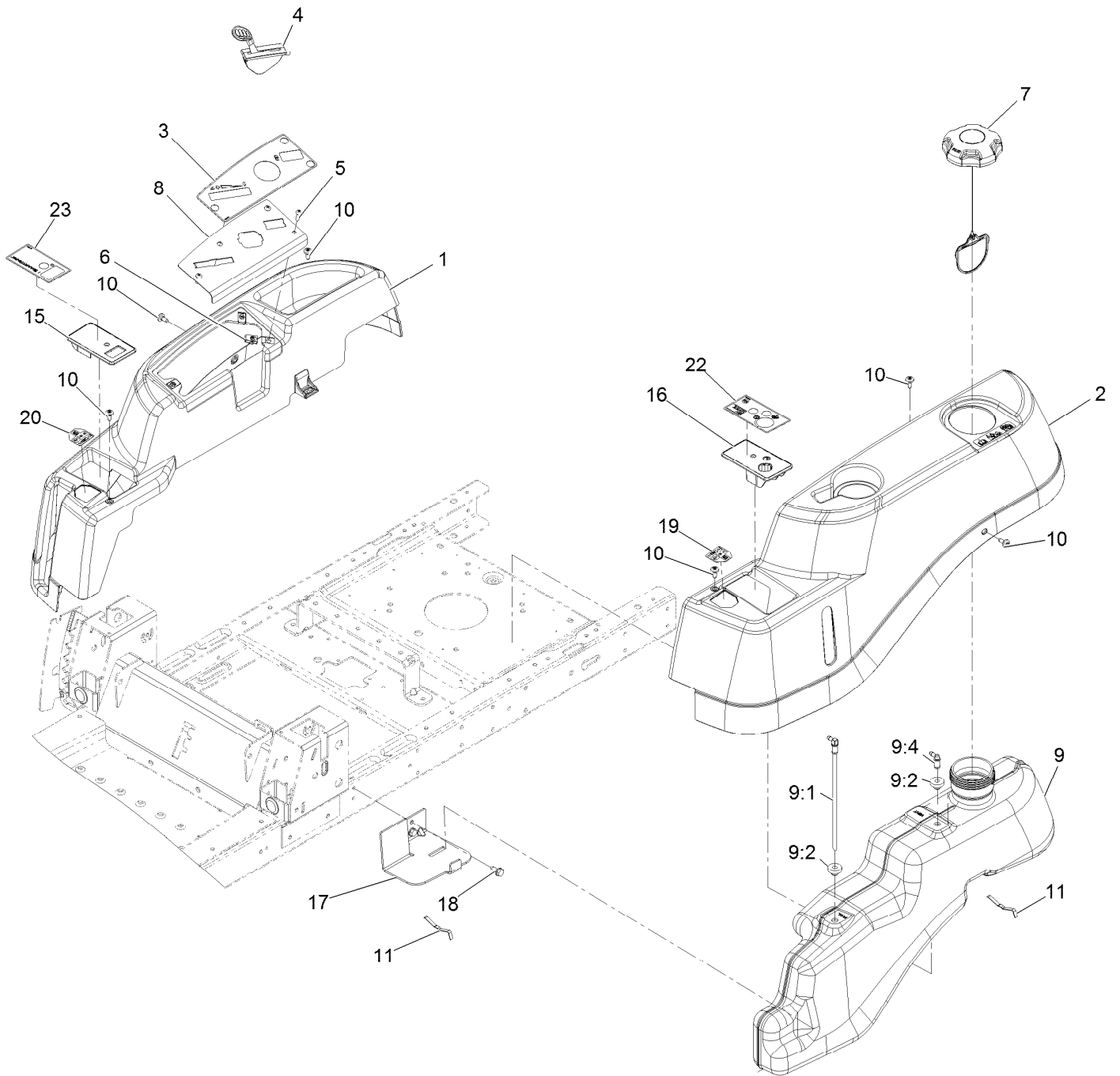
Seat Assembly (cont)



Seat Assembly (cont) (continued)

<i>Ref.</i>	<i>Part Number</i>	<i>Qty.</i>	<i>Description</i>	<i>Ref.</i>	<i>Part Number</i>	<i>Qty.</i>	<i>Description</i>
2	131-4150	1	Cushion-Seat, Back	6	131-4155	1	Armrest Kit
3	131-4152	1	Cushion-Seat, Bottom	7	131-4156	1	Shell
4	131-4153	1	Track ASM	8	82-2190	1	Switch-Bail
5	131-4154	1	Bushing ASM	9	110-4163	2	Cushion-Rest, Arm

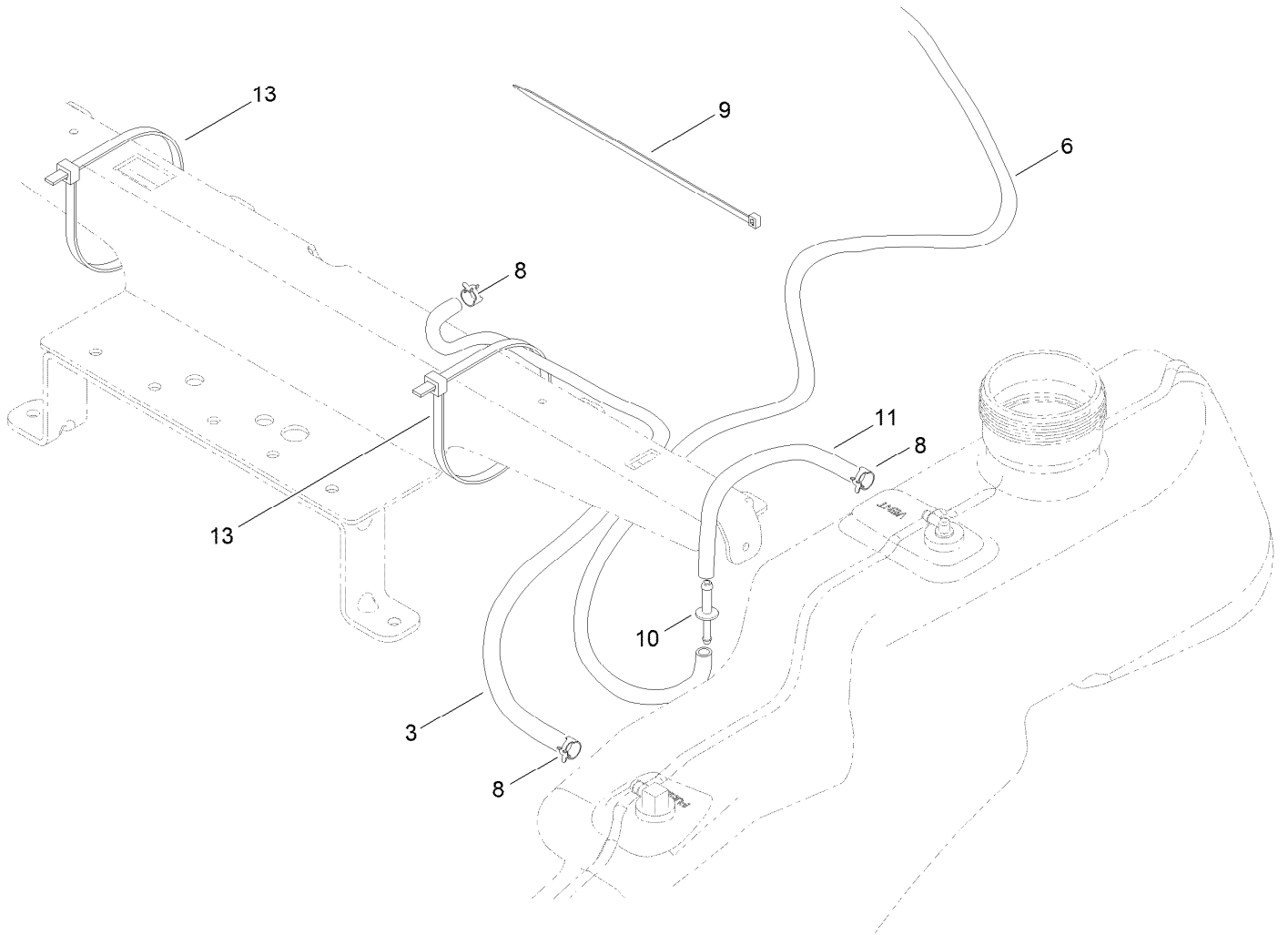
Controls and Fuel Tank Assembly



Controls and Fuel Tank Assembly (continued)

<i>Ref.</i>	<i>Part Number</i>	<i>Qty.</i>	<i>Description</i>	<i>Ref.</i>	<i>Part Number</i>	<i>Qty.</i>	<i>Description</i>
1	119-8961	1	Pod-RH	10	120-7950	8	Screw-Shoulder
2	119-8960	1	Pod-LH	11	609830	2	Spring
3	131-4161	1	Decal-Panel, Control	15	130-7041	1	Cover-RH
4	131-8727	1	Cable-Throttle	16	130-7042	1	Cover-LH
5	3258-166	3	Screw-PPH 1/4-20 X 3/4	17	119-3476-03	1	Support-Tank, Front
6	107069	3	Nut-Retainer-Panel 1/4-20	18	32144-70	2	Screw-HWH 5/16-18 X 3/4 Tf
7	120-5461	1	Cap-Fuel, Ratcheting	19	131-3621	1	Decal-Nmir
8	119-3378-03	1	Plate-Control	20	131-3620	1	Decal-Control, Pedal
9	119-3324	1	Fuel Tank ASM	22	131-3665	1	Decal-Keychoice
9:1	121-0793	1	Connector-Elbow, 90 DEG	23	131-3955	1	Decal-Brake, Parking
9:2	46-6560	2	Bushing				
9:4	117-7400	1	Fitting-Plastic				

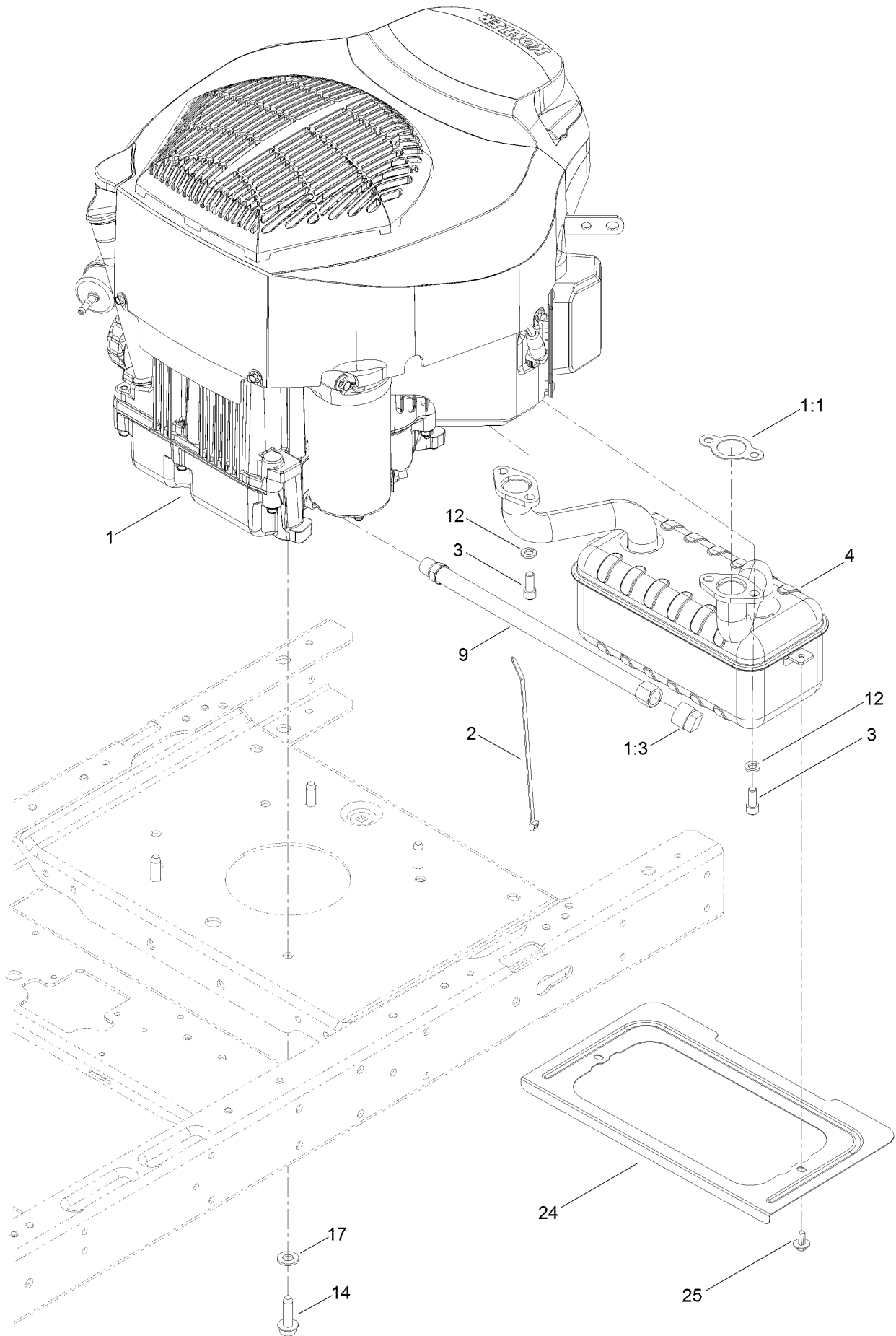
Fuel Delivery Assembly



Fuel Delivery Assembly (continued)

<i>Ref.</i>	<i>Part Number</i>	<i>Qty.</i>	<i>Description</i>	<i>Ref.</i>	<i>Part Number</i>	<i>Qty.</i>	<i>Description</i>
3	109-0273	1	Hose-Fuel	10	117-5399	1	Adaptor-Orifice
6	108-9698	1	Hose-Fuel	11	110-1876	1	Hose-Fuel
8	2412-98	3	Clamp-Hose	13	3334-945	2	Tie-Cable
9	614249	3	Tie-Cable				

Engine and Muffler Assembly



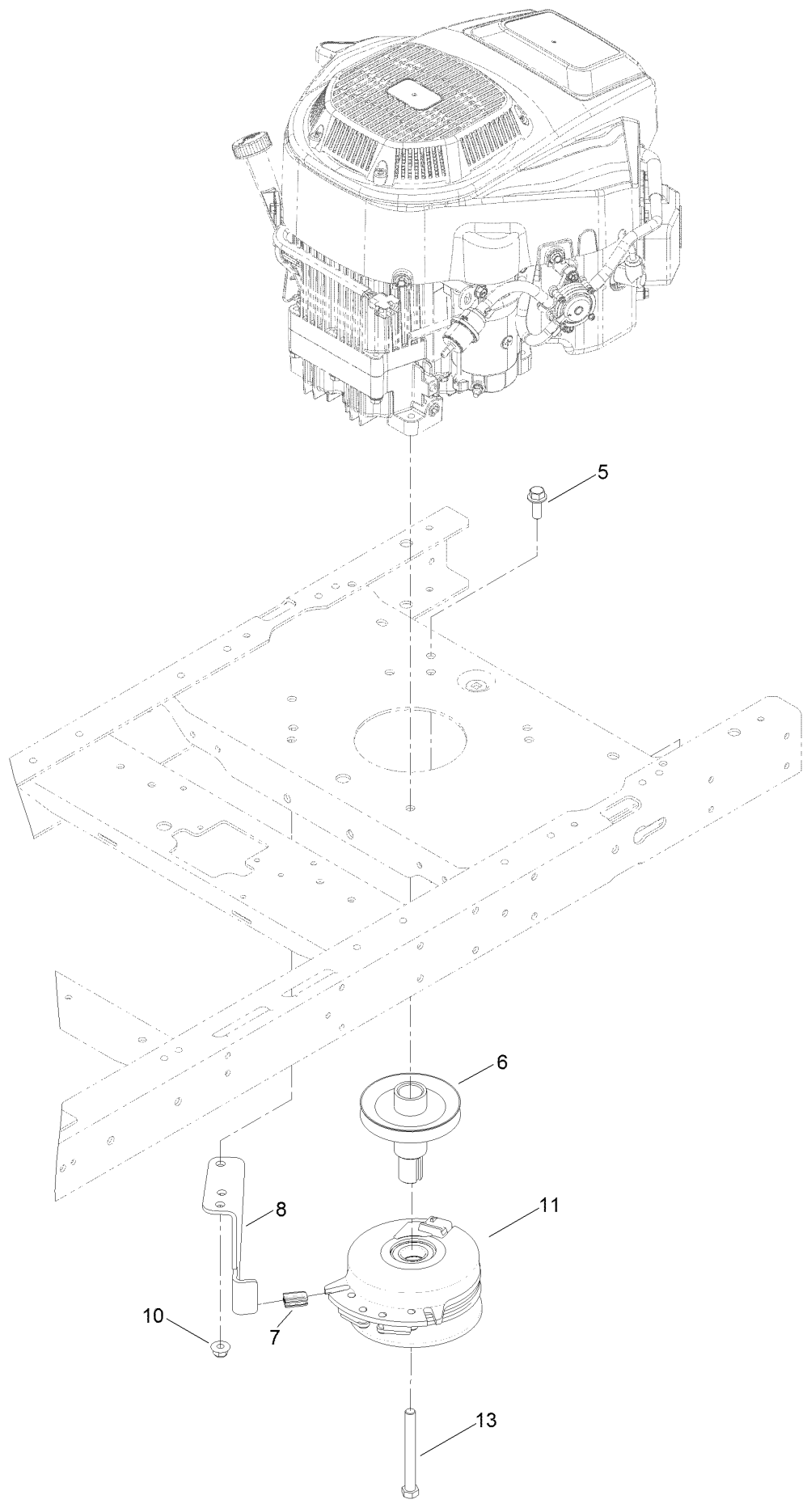
Engine and Muffler Assembly (continued)

<i>Ref.</i>	<i>Part Number</i>	<i>Qty.</i>	<i>Description</i>	<i>Ref.</i>	<i>Part Number</i>	<i>Qty.</i>	<i>Description</i>
1		1	Engine-Kohler 22HP 7000 Series Autochoke ●■	9	117-1261	1	Oil Drain Hose ASM
1:1	110-6697	2	Gasket-Exhaust	12	3253-4	4	Washer-Lock
1:3	281-2	1	Plug-Pipe, SQH	14	32144-109	4	Screw-Taptite
2	614249	1	Tie-Cable	17	3256-24	3	Washer-Flat
3	3274-10	4	Screw-HSH	24	131-1071-03	1	Shield-Heat
4	117-7462	1	Muffler-Kohler	25	46-8560	2	Screw-HHFTF

● Not serviced separately

■ Obtain parts from www.kohlerplus.com

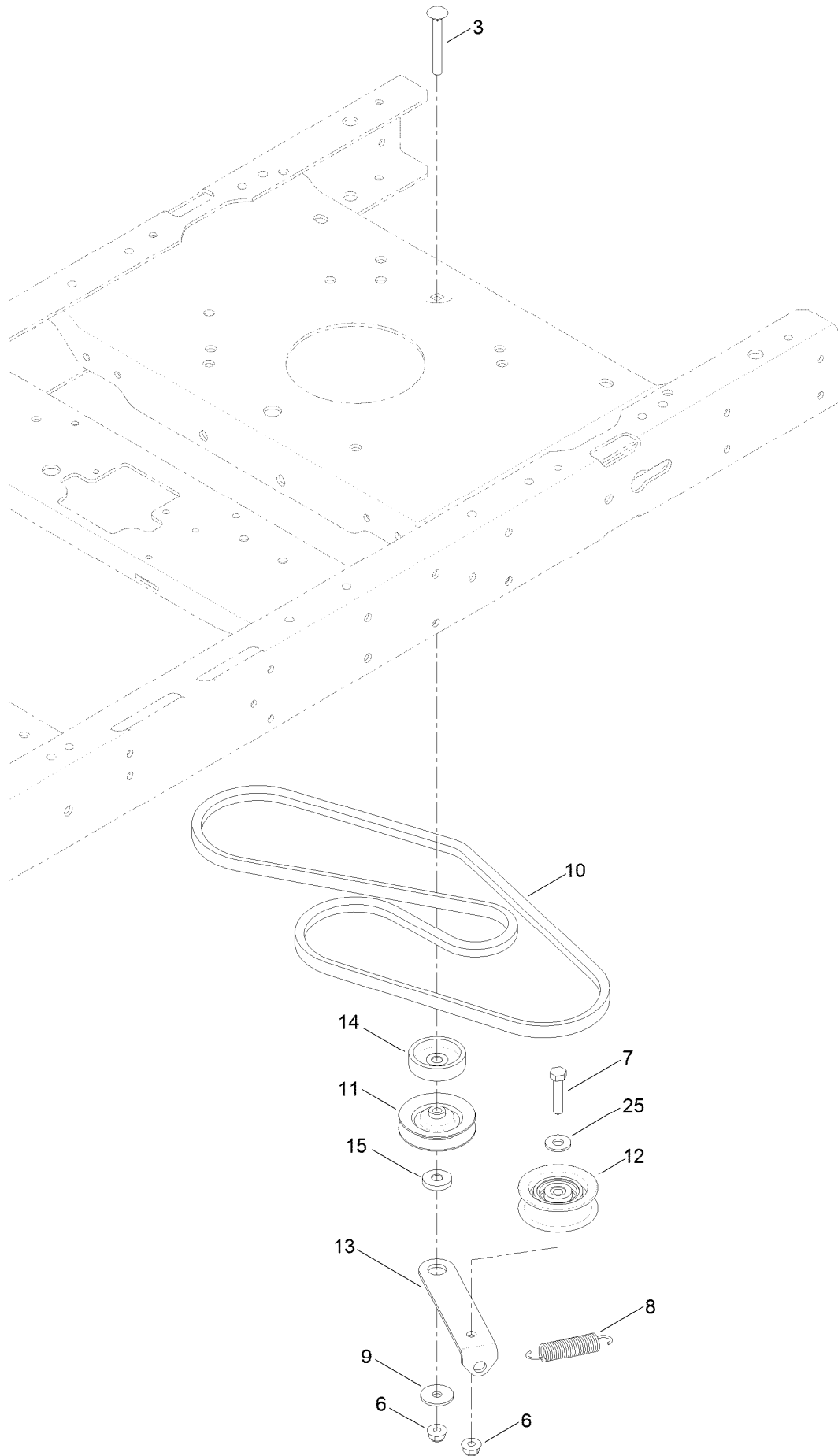
Clutch Assembly



Clutch Assembly (continued)

<i>Ref.</i>	<i>Part Number</i>	<i>Qty.</i>	<i>Description</i>	<i>Ref.</i>	<i>Part Number</i>	<i>Qty.</i>	<i>Description</i>
5	3234-42	1	Screw-HHF	10	104-8301	1	Nut-Flange, NI
6	130-6854	1	Pulley-Engine	11	117-7468	1	Clutch-Electric
7	120-2217	1	Isolator-Clutch	13	3212-16	1	Screw-HH
8	119-8884	1	Stop-Clutch				

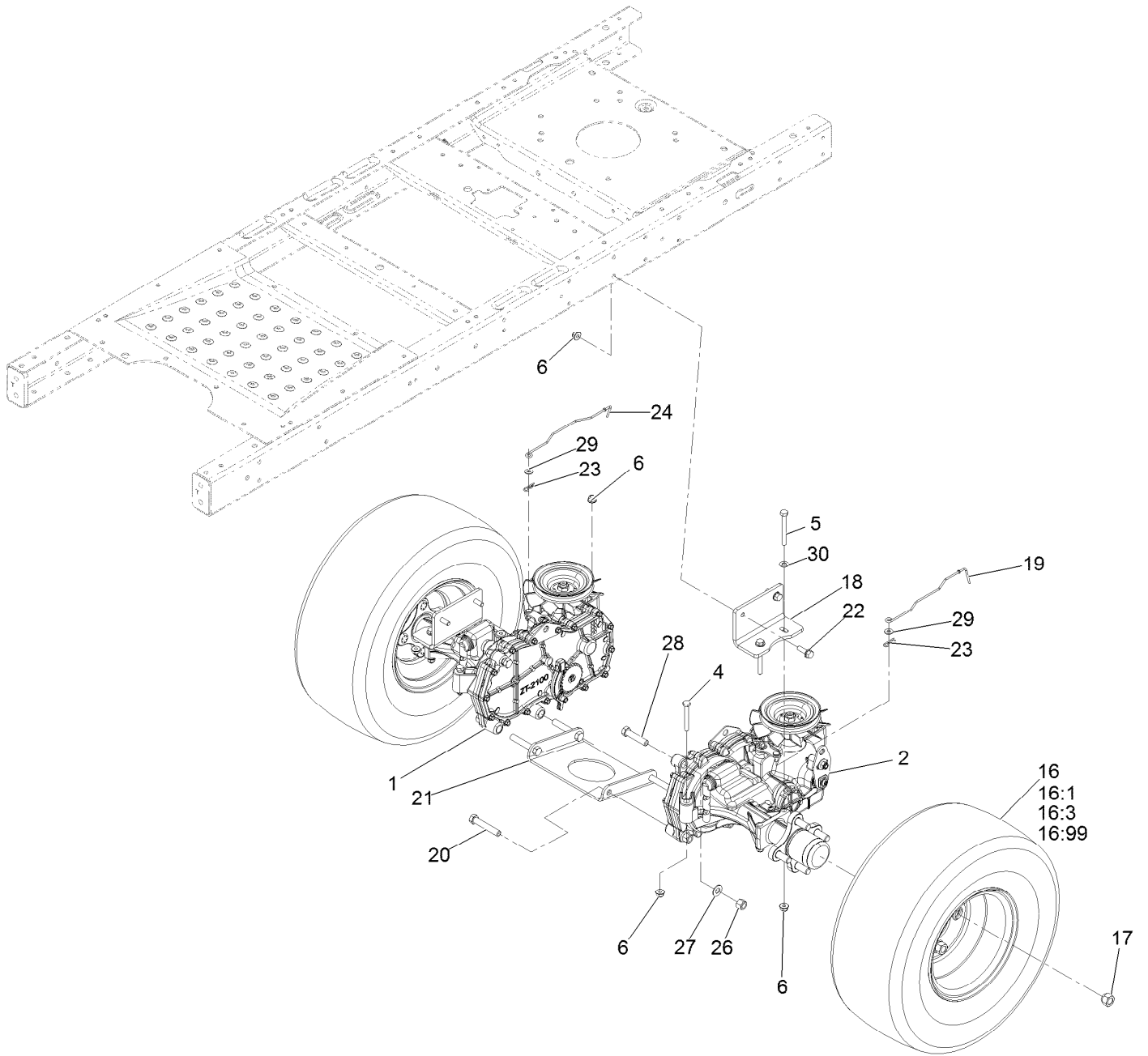
Belt and Idler Assembly



Belt and Idler Assembly (continued)

<i>Ref.</i>	<i>Part Number</i>	<i>Qty.</i>	<i>Description</i>	<i>Ref.</i>	<i>Part Number</i>	<i>Qty.</i>	<i>Description</i>
3	3230-8	1	Screw-CARR	11	119-8822	1	Pulley-Idler
6	104-8300	2	Nut-Flange, NI	12	106-2176	1	Pulley-Idler
7	322-7	1	Screw-HH	13	119-3326	1	Arm-Idler
8	104-6415	1	Spring-Return, Pedal	14	119-3353	1	Spacer
9	5-4460	1	Washer-Pivot	15	119-3327	1	Spacer-Arm, Idler
10	130-6975	1	V-Belt	25	3256-3	1	Washer-Flat

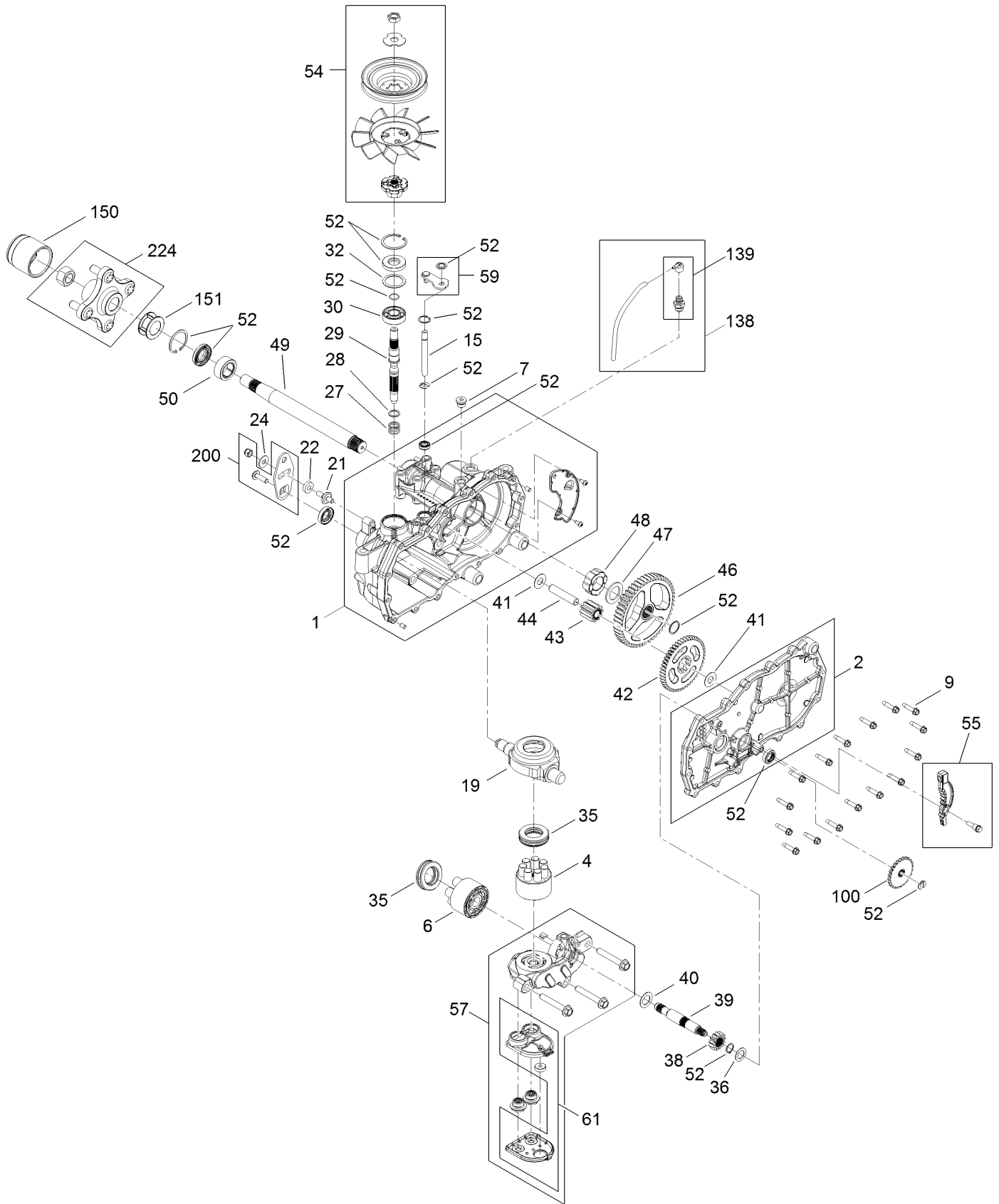
Hydro Transaxle Drive and Rear Wheel Assembly



Hydro Transaxle Drive and Rear Wheel Assembly (continued)

<i>Ref.</i>	<i>Part Number</i>	<i>Qty.</i>	<i>Description</i>	<i>Ref.</i>	<i>Part Number</i>	<i>Qty.</i>	<i>Description</i>
1	119-3341	1	RH Hydro Transaxle ASM	19	131-0900	1	Rod-Bypass, LH
2	119-3340	1	LH Hydro Transaxle ASM	20	324-10	4	Screw-HH 7/16-14 X 2 1/2
4	322-11	4	Screw-HH 5/16-18 X 2 1/4	21	119-3339-03	1	Plate-Cross, Hydro
5	322-13	4	Screw-HH 5/16-18 X 2 3/4	22	3234-29	4	Screw-HH Flg 5/16-18 X 1
6	104-8300	12	Nut-Nyloc 5/16-18 Flg	23	3290-307	2	Pin-Cotter
16	131-3671	2	2 Ply Wheel And Tire ASM	24	130-7049	1	Rod-Bypass, RH
16:1	131-3678	1	Tire	26	3296-48	6	Nut-Nyloc 7/16-14
16:3	232-27	1	Stem-Valve	27	3256-25	6	Washer-7/16 Sae
16:99	107-2491	1	Tube-Tire	28	324-8	2	Screw-HH
17	242-50	8	Nut-Lug 1/2-20	29	119-8952	2	Washer
18	117-7264-03	2	Mount-Hydro	30	3256-23	6	Washer-5/16 Sae

Left hand Hydro Transaxle Assembly No. 119-3340

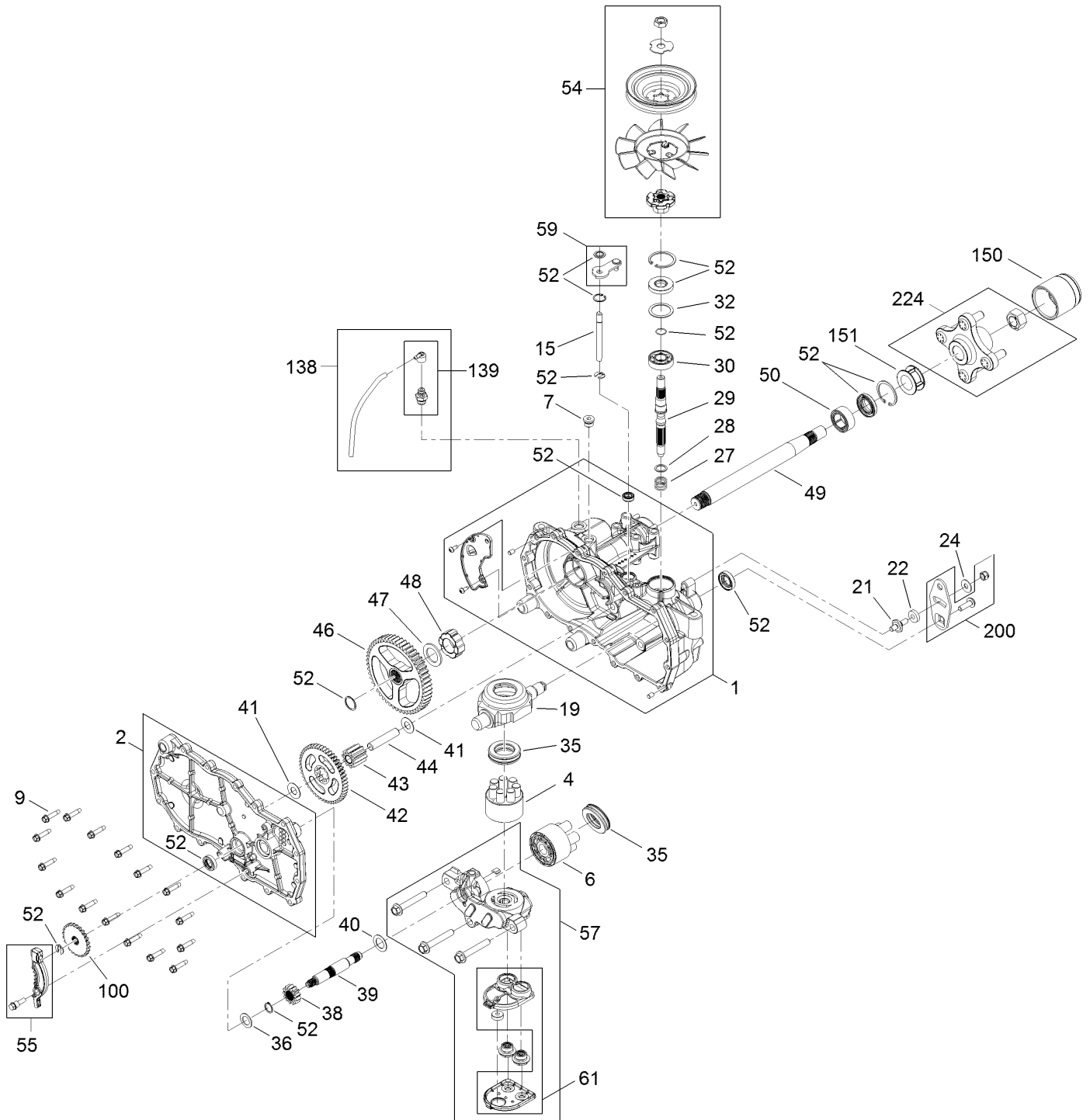


Left hand Hydro Transaxle Assembly No. 119-3340 (continued)

<i>Ref.</i>	<i>Part Number</i>	<i>Qty.</i>	<i>Description</i>	<i>Ref.</i>	<i>Part Number</i>	<i>Qty.</i>	<i>Description</i>
1	106-8695	1	Main Housing ASM	42	104-5317	1	Gear-10T/48T
2	106-8696	1	Side ASM	43	104-5318	1	Gear-Jackshaft, 10T
4	110-8561	1	Pump Block ASM	44	104-5329	1	Pin-Jackshaft
6	103-2666	1	Cylinder Block Kit	46	112-9855	1	Gear-52T, Bull
7	104-2189	1	Plug-Thread, Straight	47	112-9856	1	Washer
9	104-5305	16	Screw-HHF	48	112-9857	1	Bearing-Sleeve
15	106-8678	1	Rod-Bypass	49	121-5732	1	Shaft-Axle
19	104-5304	1	Swashplate-Trunnion	50	112-9859	1	Bushing-Axle
21	104-2116	1	Stud	52	106-8686	1	Seal Kit
22	112-9853	1	Puck-Friction	54	121-5729	1	Fan Pulley Kit
24	114-8491	1	Washer	55	106-8688	1	Brake Arm Kit
27	120-5537	1	Spring-Compression	57	112-9861	1	Center Section Filter Kit
28	120-5538	1	Washer	58	104-2147	1	Sealant ●
29	104-5306	1	Shaft-Input	59	120-5549	1	Bypass Kit
30	104-5311	1	Bearing-Ball	61	114-1634	1	Filter Kit
32	104-5308	1	Spacer	100	106-8694	1	Disc-Brake, Cog
35	94-6922	2	Bearing-Thrust	138	112-9866	1	Breather Kit
36	104-5339	1	Washer-Flat	139	114-1635	1	Breather ASM
38	104-5316	1	Gear-Pinion, 13T	150	116-6214	1	Cap-Long Axle
39	106-8683	1	Shaft-Motor	151	121-5734	1	Tube-Axle
40	104-5360	1	Washer	200	117-5362	1	Arm Control Kit
41	119-5541	2	Washer	224	109-3538	1	Hub Kit

● Not illustrated

Right Hand Hydro Transaxle Assembly No. 119-3341



Right Hand Hydro Transaxle Assembly No. 119-3341 (continued)

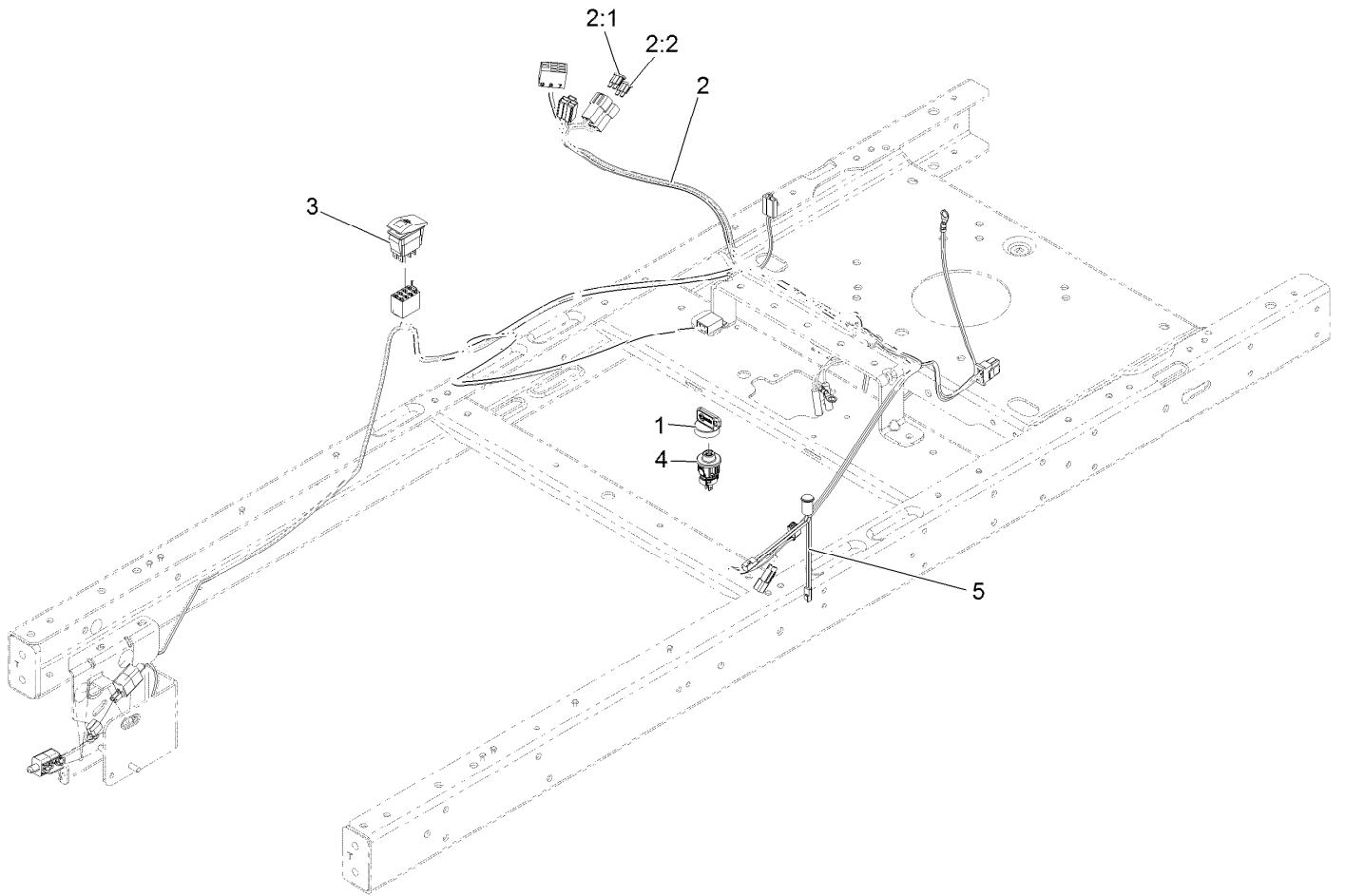
<i>Ref.</i>	<i>Part Number</i>	<i>Qty.</i>	<i>Description</i>	<i>Ref.</i>	<i>Part Number</i>	<i>Qty.</i>	<i>Description</i>
1	106-8674	1	Main Housing ASM	42	104-5317	1	Gear-10T/48T
2	106-8675	1	Side ASM	43	104-5318	1	Gear-Jackshaft, 10T
4	110-8561	1	Pump Block ASM	44	104-5329	1	Pin-Jackshaft
6	103-2666	1	Cylinder Block Kit	46	112-9855	1	Gear-52T, Bull
7	104-2189	1	Plug-Thread, Straight	47	112-9856	1	Washer
9	104-5305	16	Screw-HHF	48	112-9857	1	Bearing-Sleeve
15	106-8678	2	Rod-Bypass	49	121-5732	1	Shaft-Axle
19	104-5304	1	Swashplate-Trunnion	50	112-9859	1	Bushing-Axle
21	104-2116	1	Stud	52	106-8686	1	Seal Kit
22	112-9853	1	Puck-Friction	54	121-5729	1	Fan Pulley Kit
24	114-8491	1	Washer	55	106-8688	1	Brake Arm Kit
27	120-5537	1	Spring-Compression	57	112-9862	1	Center Section Filter Kit
28	120-5538	1	Washer	58	104-2147	1	Sealant ●
29	104-5306	1	Shaft-Input	59	107-2489	1	Bypass Arm Kit
30	104-5311	1	Bearing-Ball	61	114-1634	1	Filter Kit
32	104-5308	1	Spacer	100	106-8694	1	Disc-Brake, Cog
35	94-6922	2	Bearing-Thrust	138	112-9866	1	Breather Kit
36	104-5339	1	Washer-Flat	139	114-1635	1	Breather ASM
38	104-5316	1	Gear-Pinion, 13T	150	116-6214	1	Cap-Long Axle
39	106-8683	1	Shaft-Motor	151	121-5734	1	Tube-Axle
40	104-5360	1	Washer	200	117-5362	1	Arm Control Kit
41	119-5541	2	Washer	224	109-3538	1	Hub Kit

● Not illustrated

Electrical Assembly (continued)

<i>Ref.</i>	<i>Part Number</i>	<i>Qty.</i>	<i>Description</i>	<i>Ref.</i>	<i>Part Number</i>	<i>Qty.</i>	<i>Description</i>
2	117-2221	1	Switch-Ignition	13	321-3	1	Screw-HH 1/4-20 X 5/8
3	103-2106	1	Key-Exmark Logo	15	3256-22	2	Washer-1/4 Sae
4	114-0279	1	Switch-PTO	16	120-2244	1	Hourmeter
5	32103-22	1	Nut-Wing	17	119-8897	1	Cable-Battery, Red
8	117-1197	1	Solenoid	18	32128-33	2	Nut-Whizlock 1/4-20
9	121-0711	1	Cable-Battery, Positive	20	32144-4	2	Screw-HWH 1/4-20 X 1/2 Taptite
10	3229-1	1	Bolt-Carriage 1/4-20 X 3/4	21	3220-2	2	Nut-Jam 5/16-24
11	121-5726	1	Cable-Battery, Black				
12	104-2466	1	Holddown-Battery				

Harness Assembly



Harness Assembly (continued)

<i>Ref.</i>	<i>Part Number</i>	<i>Qty.</i>	<i>Description</i>	<i>Ref.</i>	<i>Part Number</i>	<i>Qty.</i>	<i>Description</i>
1	103-2106	1	Key-Exmark Logo	3	130-6874	1	Switch-Rocker, (On)-Off-(On)
2	130-6918	1	Harness-Wire	4	119-3068	1	Switch-Momentary, N.O.
2:1	109103	1	Fuse-Blade, 30 Amp	5	131-4136	1	Light-Indicator
2:2	109102	1	Fuse-Blade, 25 Amp				

Notes:

EXMARK® MAINTENANCE

MAXIMIZE THE PERFORMANCE OF YOUR EXMARK.

4-CYCLE PREMIUM ENGINE OIL

Part No. 116-3373

Both SAE 30 and SAE 10W-30 in one bottle.

Contains increased levels of zinc and phosphorus for better lubricity.

No Viscosity Index Improvers that tend to shear down in high heat.

Synthetic formulation.

Gas & Diesel compatible.

Anti-corrosion additives.

API 'SL' and JASO rated with wet clutch compatibility for other machines.

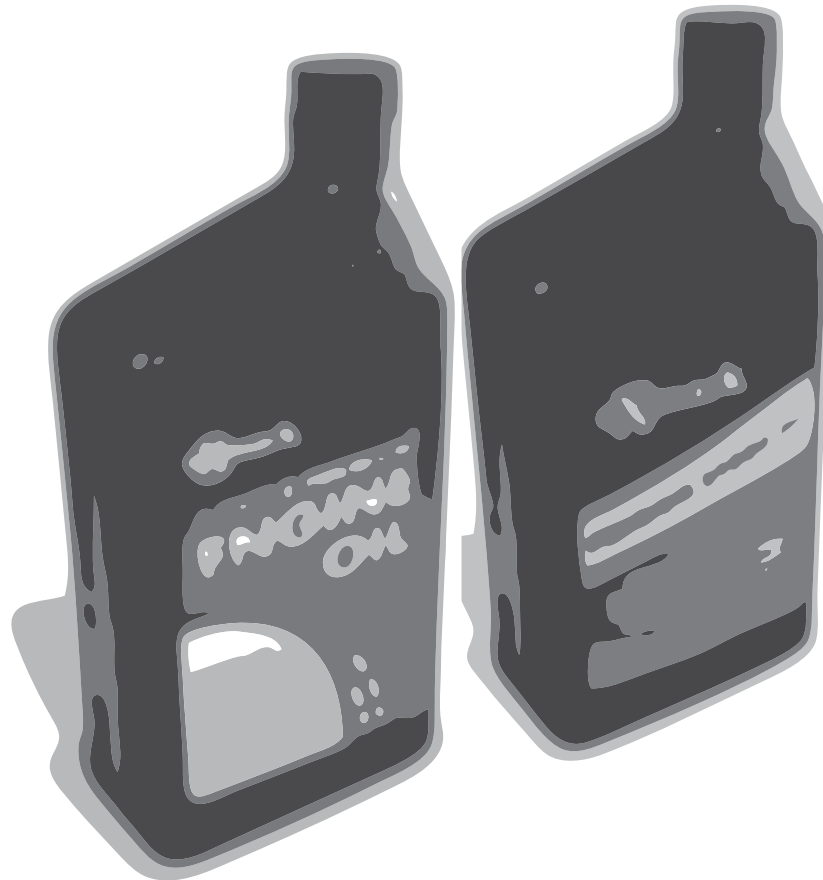
PREMIUM HYDRO OIL

Part No. 109-9828

Commercial quality for tough, high-heat conditions.

Designed specifically for zero-turn mower hydraulic systems.

Superior shear resistance under heavy loads.



Available from your local Exmark dealer. Find your closest dealer at exmark.com

EXMARK ACCESSORIES AND OPTIONS*

MID-MOUNT RIDING ACCESSORIES AND OPTIONS

CUSTOM RIDE SEAT SUSPENSION SYSTEM	OPERATOR CONTROLLED DISCHARGE
FULL SUSPENSION SEAT	SUN SHADE
DECK LIFT ASSIST KIT	TRASH CONTAINER
HITCH KIT	TURF STRIPER
LIGHT KIT	ULTRA VAC COLLECTION SYSTEM
12V POWER PORT	ULTRA VAC QUICK DISPOSAL SYSTEM
MICRO-MULCH SYSTEM	

OUT-FRONT RIDING ACCESSORIES AND OPTIONS

CUSTOM RIDE SEAT SUSPENSION SYSTEM	SNOW BLADE
DUAL-TAIL WHEEL	SNOWBLOWER
FLOOR PAN EXTENDER	SUN SHADE
HITCH KIT	TRASH CONTAINER
LIGHT KIT	ULTRA VAC COLLECTION SYSTEM
MICRO-MULCH SYSTEM	ULTRA VAC QUICK DISPOSAL SYSTEM
ROLL OVER PROTECTION SYSTEM (ROPS)	WEATHER CAB

WALK-BEHIND ACCESSORIES AND OPTIONS

GRASS CATCHER	TURF STRIPER
MICRO-MULCH SYSTEM	STANDON

*Some accessories and options not available for some models.

Place Model No. and Serial No.
Label Here (Included in the Literature
Pack) or Fill in Below

Model No. _____

Serial No. _____

Date Purchased _____

Engine Model No. and Spec. No. _____

Engine Serial No. (E/No) _____

© 2015 Exmark Mfg. Co., Inc.
Industrial Park Box 808
Beatrice, NE 68310
All Rights Reserved

Part No. 4502-282 Rev. A
(402)223-6290
Fax (402) 223-5489
Printed in the USA.

