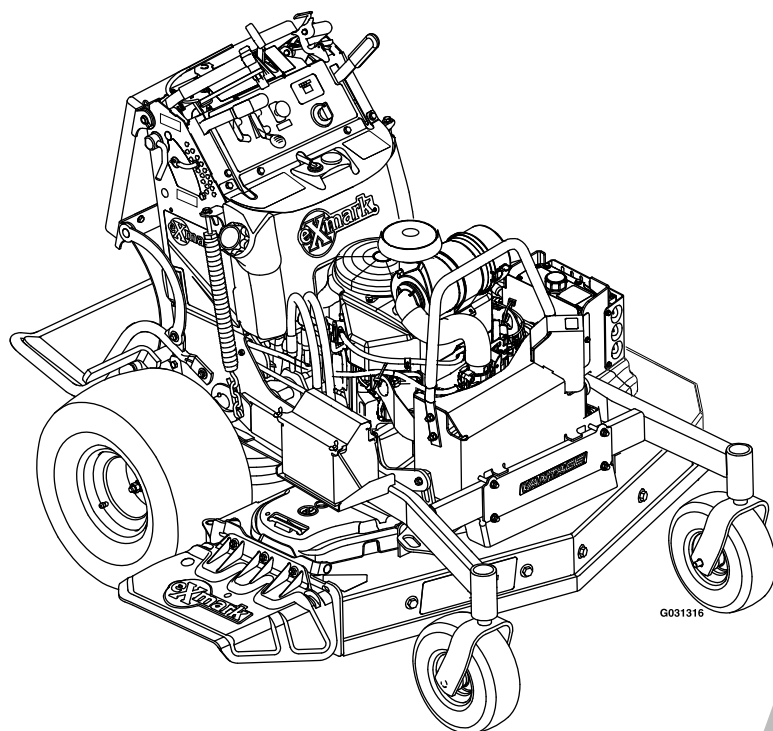




VANTAGE® X-SERIES

Model No. VTX651GKA48400—Serial No. 31600000 and Up

Picture below may not reflect actual product.



Parts Manual

Part No. 4502-625 Rev. A

Ordering Replacement Parts

To order replacement parts, please supply the part number, the quantity, and the description of each part desired.

Understanding Reference Numbers

Each identified part in an illustration has a reference number. The reference number for a part also appears in the parts list, along with other information about the part.

This catalog uses two special reference number formats, one to indicate parts in a service assembly and another to indicate the quantity of a given part in an illustration.

Service Assembly Reference Numbers

Parts in service assemblies have reference numbers in the form a:b. The a represents the reference number of the entire service assembly and the b represents a sequential number unique to each part within the service assembly.

For example, a wheel assembly might be identified by reference number 6, the tire by 6:1, the valve by 6:2, and the wheel by 6:3. When you order the assembly identified by reference number 6, you receive all parts identified by reference numbers 6:1, 6:2, and 6:3. However, you may also order any part individually. Reference numbers of this type appear in illustration and in parts lists.

Reference Numbers Indicating Quantity

In an illustration, if a reference number indicates more than one part, the reference number has the form nX y. The n represents the quantity of the part, the X is the multiplication symbol, and the y represents the reference number.

For example, in an illustration, the reference number 2X 37 means that two of the parts identified by reference number 37 are indicated.

List of Abbreviations

AR: as required	HLH: hex lag head	PTH: phillips truss head
ASM: assembly	HOC: height-of-cut	PTO: power-take-off
BBC: blade brake control	HP: high pressure	RH: right hand
BHTF: button head thread forming	HSBH: hex socket button head	ROPS: roll-over protection system
CARR: carriage	HSFH: hex socket flat head	RRB: rear roller brush
CCW: counter clockwise	HSH: hex socket head	SFH: slotted fillister head
CW: clockwise	HWH: hex washer head	SHH: slotted hex head
DEG: degrees	HWHTF: hex washer head thread forming	SHWH: slotted hex washer head
DPA: Dual Point Adjustment	HYD: hydraulic	SPH: slotted pan head
ECM: electronic control module	LH: left hand	SQH: square head
EXT: external	LP: low pressure	SRH: slotted round head
FH: flat head	LPG: Liquefied Petroleum Gas	STD: standard
GA: gauge	NI: nylon insert	TAP: self tapping
HD: heavy-duty	NPTF: national pipe thread fine	TTH: torx truss head
HF: hex flange	PFH: phillips flat head	
HH: hex head	PPH: phillips pan head	
HHF: hex head flange	PPHTF: phillips pan head thread forming	
HHFTF: hex head flange thread forming	PRH: phillips round head	
HJ: hex jam		

Touch Up Paint

Exmark black touch up spray paint – gloss black.

Exmark red touch up paint (spray paint – P/N 1-850337 - .6 oz liquid bottle – P/N 103-9140).

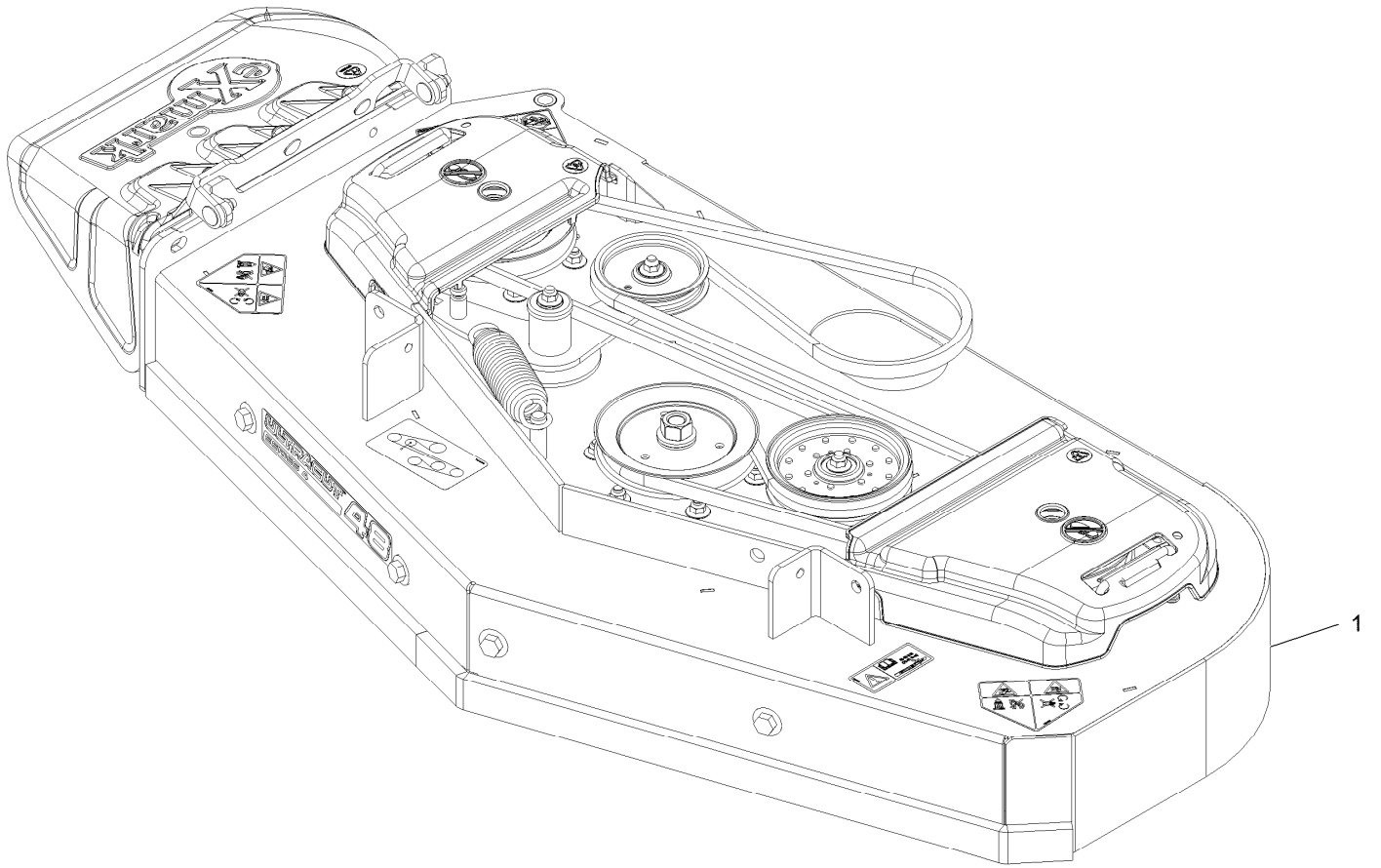


If your Exmark dealer does not have the Exmark part in stock, Exmark will get the parts to the dealer the next business day or the part will be FREE Guaranteed!! (Some restrictions apply. See your participating Exmark Dealer for details.)

Contents

Complete Deck Assembly.....	4
Deck Assembly.....	6
Deck W/Decals Assembly No. 116-3999.....	8
Idler Arm Assembly No. 116-3806.....	10
Main Frame Assembly.....	12
Tower W/Decals Assembly No. 126-7222.....	14
Wheel and Bearing Assembly No. 112-3810.....	16
Park Brake Assembly.....	18
Deck Lift Assembly.....	20
Platform Group.....	22
Cushion Assembly No. 126-1210.....	24
Platform Assembly No. 116-1804.....	26
Ground Drive Assembly.....	28
Pump Idler Assembly No. 116-9980.....	30
Vertical Adjust Link Assembly No. 116-7738.....	32
Controls Assembly.....	34
Motion Linkage Assembly.....	36
Rod Assembly No. 116-8681.....	38
Engine Assembly.....	40
Fuel Assembly.....	42
Fuel Tank Assembly No. 126-6922.....	44
Electrical Assembly.....	46

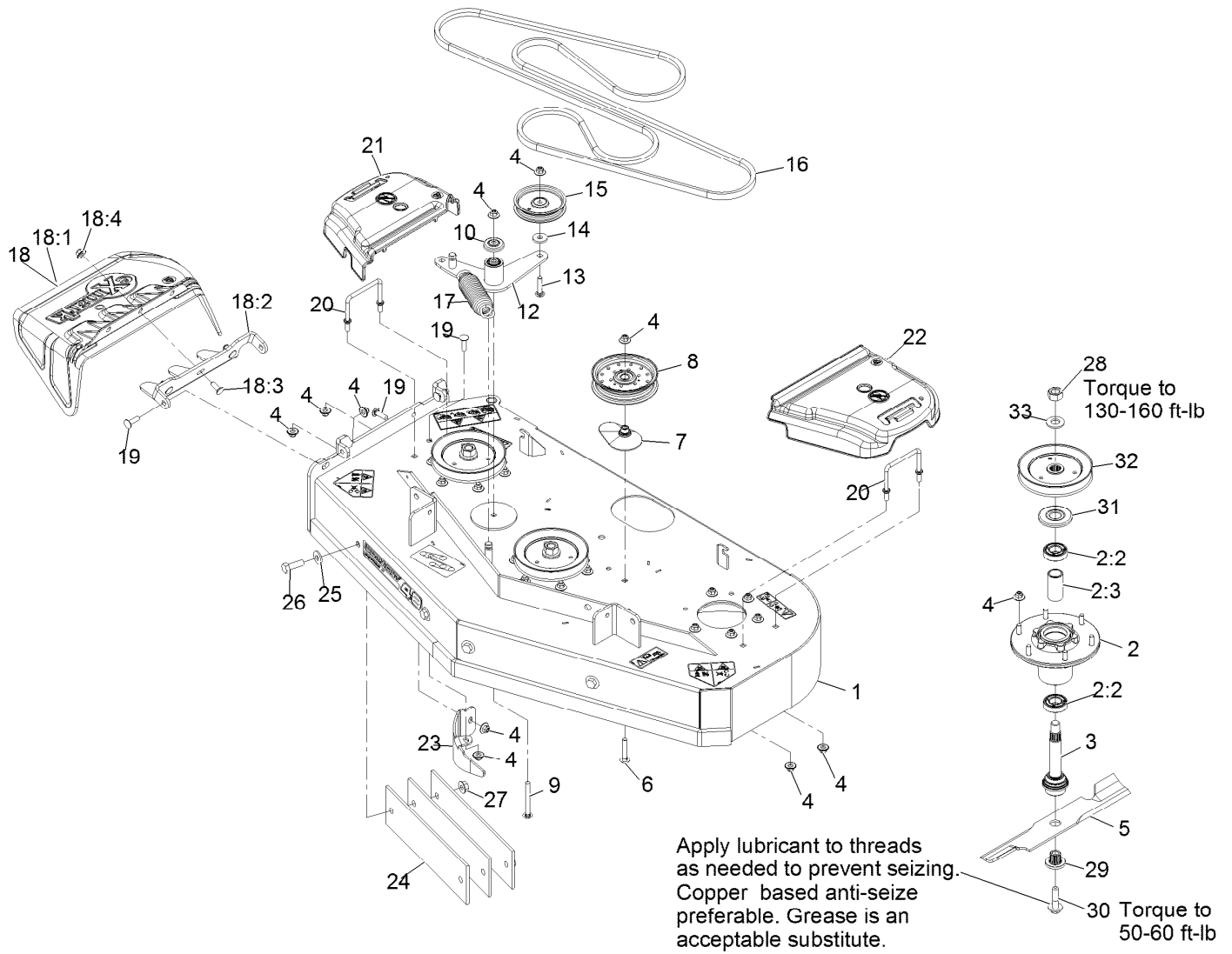
Complete Deck Assembly



Complete Deck Assembly (continued)

<i>Ref.</i>	<i>Part Number</i>	<i>Qty.</i>	<i>Description</i>
1	116-5011	1	ASM-Deck Complete 484

Deck Assembly



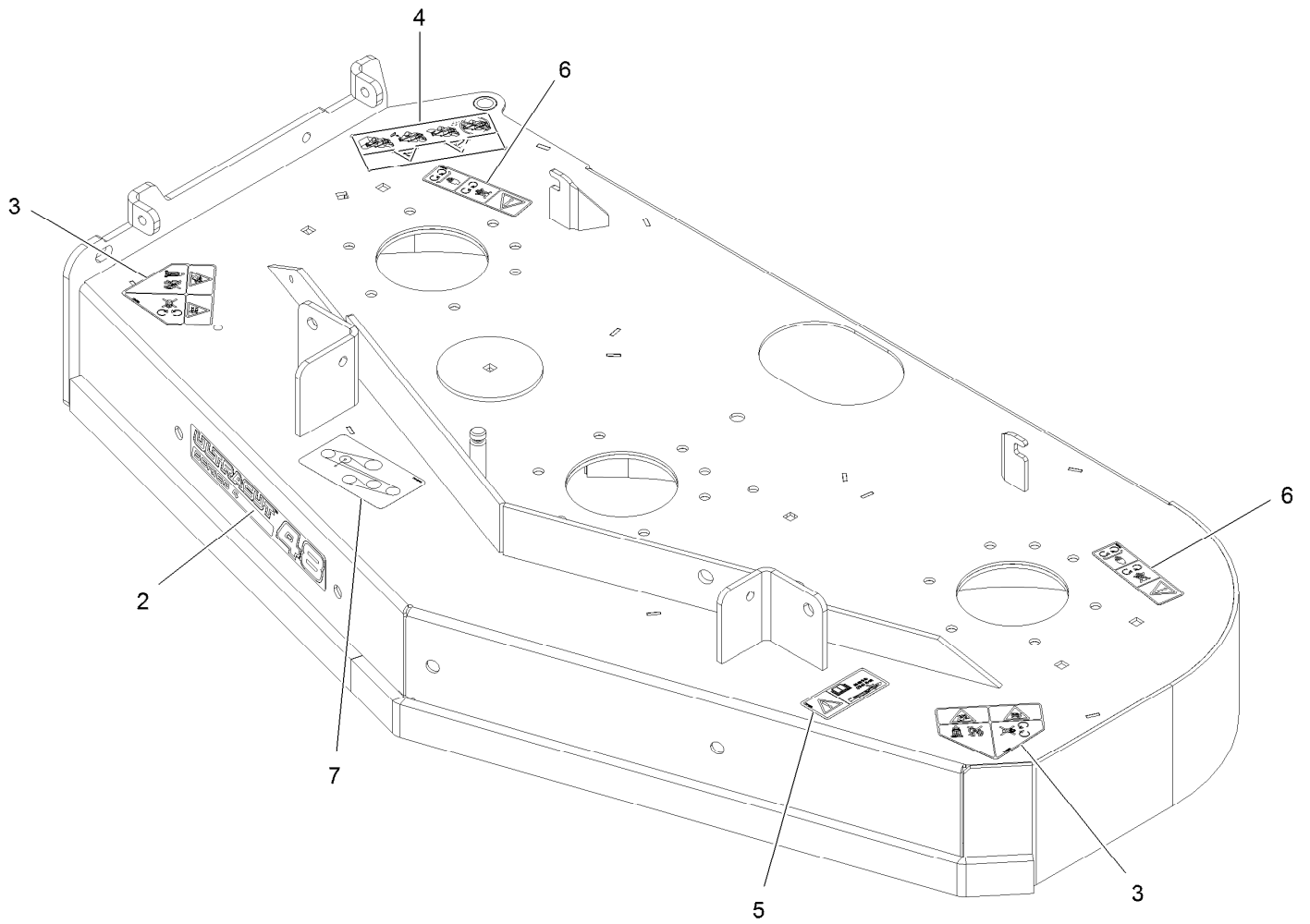
Deck Assembly (continued)

<i>Ref.</i>	<i>Part Number</i>	<i>Qty.</i>	<i>Description</i>	<i>Ref.</i>	<i>Part Number</i>	<i>Qty.</i>	<i>Description</i>
1	116-3999	1	Deck ASM-484	17	116-6317	1	Spring-Extension
2	116-3344	3	ASM-Cutter Hsg With Bearings	18	109-7188	1	ASM,Discharge Chute
2:2	116-0720	2	Bearing-Ball	18:1	109-2738	1	Chute, Discharge
2:3	116-3312	1	Spacer-Bearing	18:2	109-8675-01	1	Bracket,Discharge Chute
3	116-3341	3	ASM-Spindle And Seal ■	18:3	3231-22	3	Bolt-Carriage 3/8-16 X 1
4	109-6658	29	Nut-Nyloc 3/8-16 Flg	18:4	109-6658	3	Nut-Nyloc 3/8-16 Flg
5	103-6391	3	Blade, Mulching ●	19	3231-28	4	Bolt-Carriage 3/8-16 X 1 1/4
5	116-5177	3	Blade-Extreme 2, 16.25"	20	109-6982	2	Wireform-Cover
5	103-6401	3	Blade-Notched	21	109-6935	1	Cover-Belt, RH
5	103-6386	3	Blade, Low Lift	22	109-6936	1	Cover-Belt, LH
5	103-6381	3	Blade, Solid	23	116-5995-01	1	Baffle-Dogleg,Lzs Lzx Vt48
6	3231-7	1	Bolt-Carriage 3/8-16 X 2 1/4	24	116-1822-01	6	Bar,Weight
7	109-2872	1	Spacer-Pulley	25	1-513435	4	Washer-Spring Disc 1/2
8	116-4665	1	Idler-Pulley, Flat	26	325-6	4	Screw-HH 1/2-13 X 1 1/2
9	3231-11	1	Bolt-Carriage 3/8-16 X 3 1/2	27	32128-49	4	Nut-Whizlock 1/2-13
10	103-2916	1	Guard-Top	28	116-7306	3	Nut-Hex
12	116-3806	1	Idler Arm ASM W/Bearings	29	103-3037	3	Bushing, Splined
13	116-3381	1	Bolt-Carriage 3/8-16 X 1 3/4	30	109-9220	3	Screw-Sems 1/2-20 X 2.19
14	1-373034	1	Washer	31	116-1286	3	Guard,Bearing Top .989
15	93-1622	1	Pulley-Idler	32	116-0674	3	Sheave,Blade Drive 5.90 ■
16	99-4627	1	V-Belt	33	103-2802	3	Washer-Spring Disc 3/4

● Requires installation of mulch kit for proper mulching. See your Exmark dealer for details.

■ Apply Mobil HTS grease (P/N 103-5217 1.5 oz packet) (or a food-grade anti-seize). See operator s manual for locations.

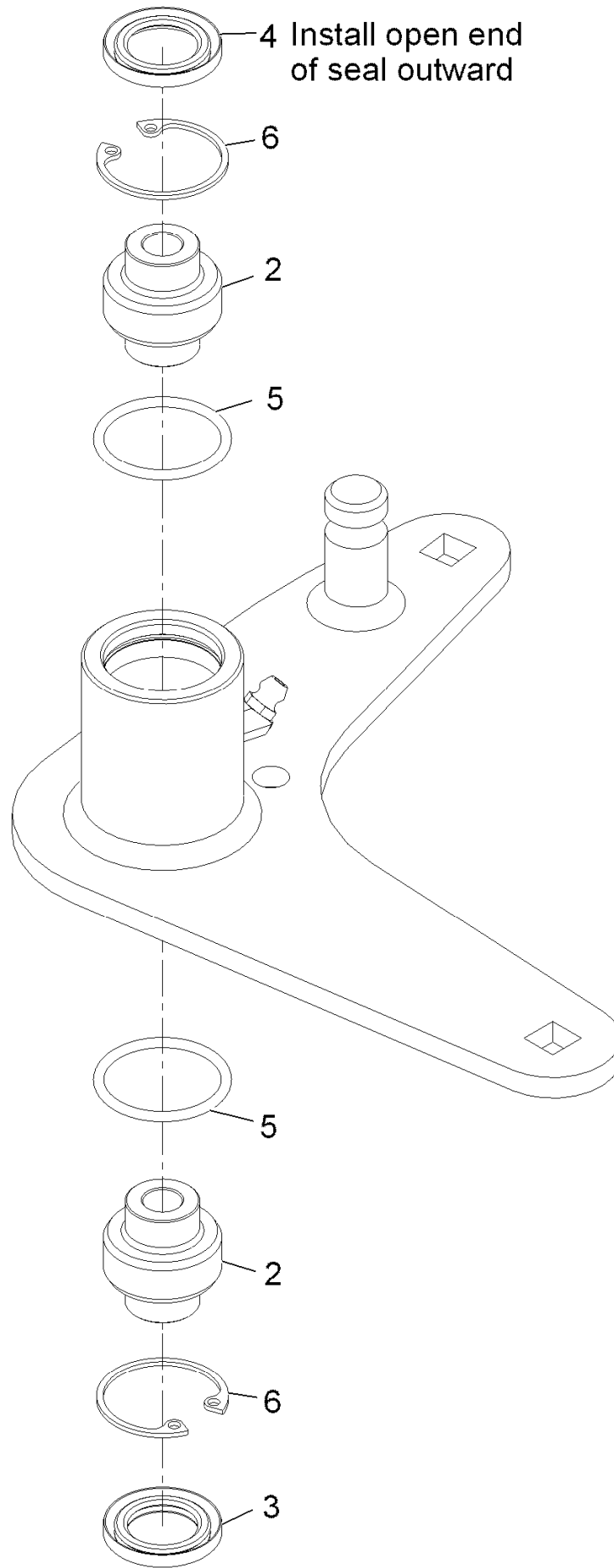
Deck W/Decals Assembly No. 116-3999



Deck W/Decals Assembly No. 116-3999 (continued)

<i>Ref.</i>	<i>Part Number</i>	<i>Qty.</i>	<i>Description</i>	<i>Ref.</i>	<i>Part Number</i>	<i>Qty.</i>	<i>Description</i>
2	126-6587	1	Decal, 484	5	116-8283	1	Decal-Bolt Torque
3	112-8760	2	Decal-Danger	6	112-9028	2	Decal-Missing, Cover
4	114-3489	1	Decal-Warning, Bagger	7	116-8774	1	Decal-Belt Routing

Idler Arm Assembly No. 116-3806

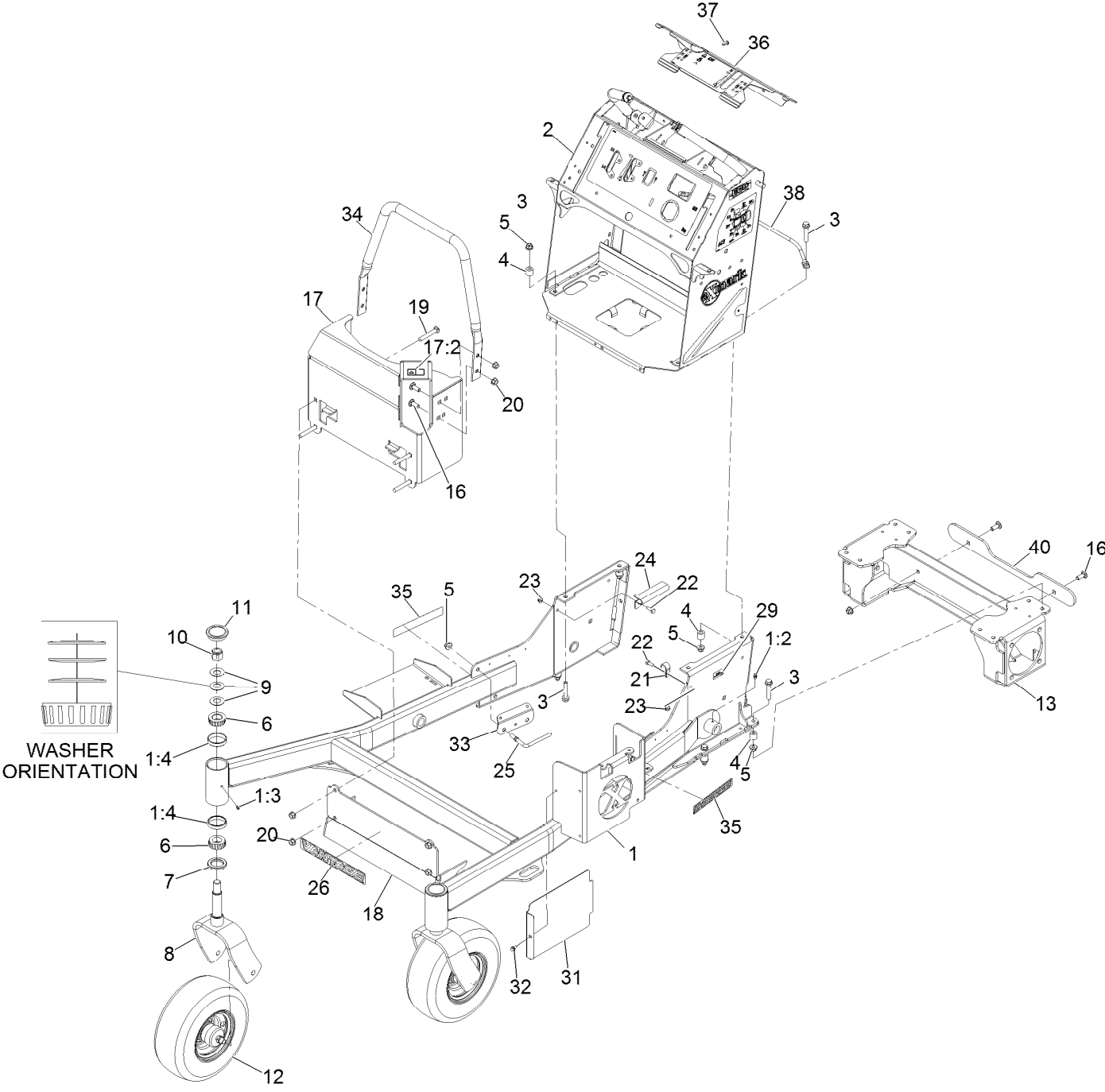


Idler Arm Assembly No. 116-3806 (continued)

<i>Ref.</i>	<i>Part Number</i>	<i>Qty.</i>	<i>Description</i>
2	103-3504	2	Bearing-Spherical
3	103-3505	1	Seal-Double Lip
4	103-3506	1	Seal-Single Lip

<i>Ref.</i>	<i>Part Number</i>	<i>Qty.</i>	<i>Description</i>
5	106-7159	2	O-Ring
6	32120-10	2	Ring-Retaining

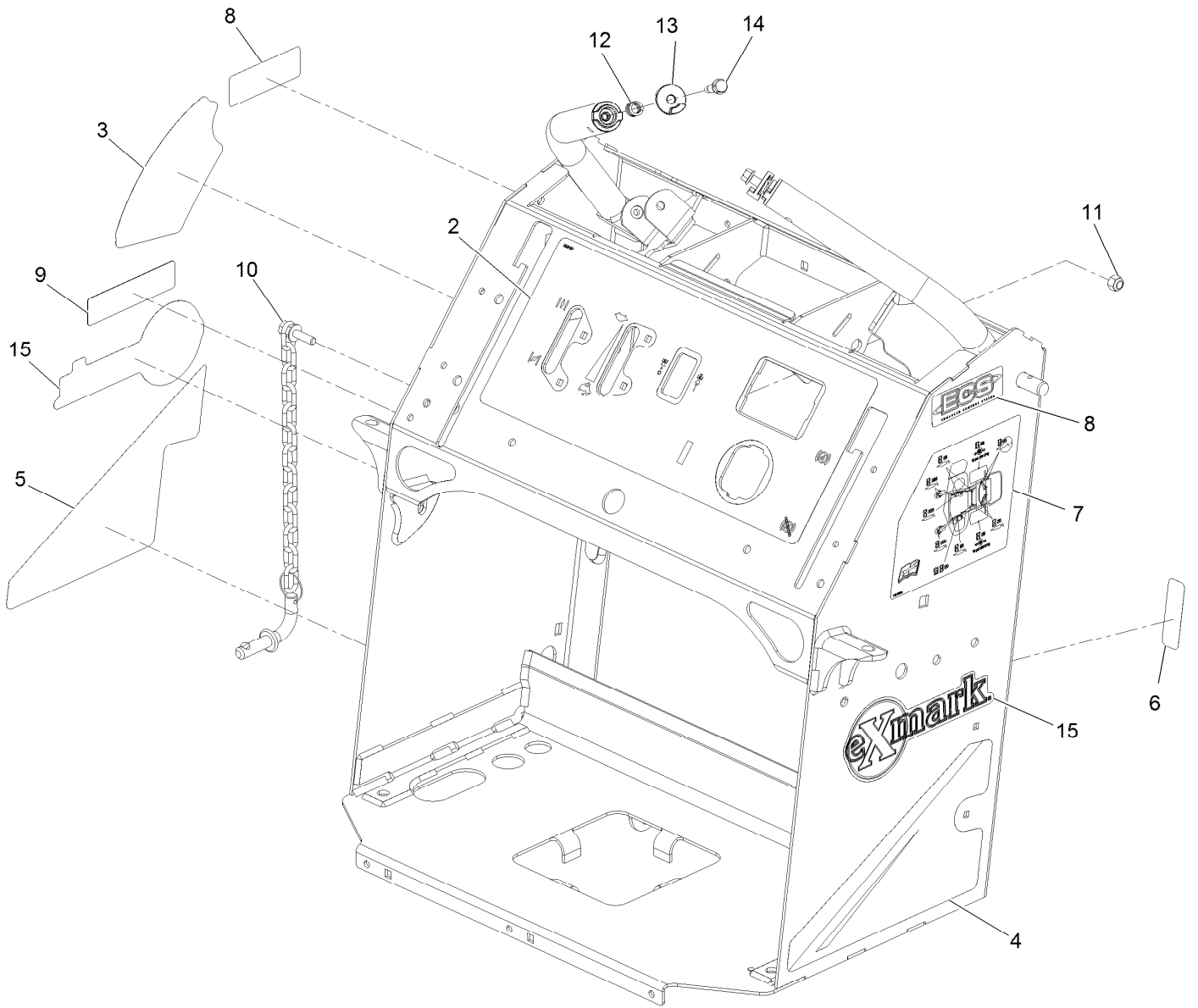
Main Frame Assembly



Main Frame Assembly (continued)

<i>Ref.</i>	<i>Part Number</i>	<i>Qty.</i>	<i>Description</i>	<i>Ref.</i>	<i>Part Number</i>	<i>Qty.</i>	<i>Description</i>
1	116-7045	1	Front Frame ASM	17:2	106-5517	1	Decal-Warning, Hot Surface
1:2	302-5	4	Zerk 1/4-28 Str Thrd Forming	18	116-3113-01	1	Panel-Guard
1:3	1-811010	2	Plug	19	3231-31	4	Bolt-Carriage 3/8-16 X 2 1/2
1:4	1-543508	4	Cup-Bearing Tapered Roller	20	32128-21	8	Nut-3/8-16 Flanged Side Lock
2	126-7222	1	ASM, Tower W/ Decals	21	2412-87	1	Clamp-Cable
3	108-3742	8	Screw-HH Flg 3/8-16 X 2	22	321-4	2	Screw-HH 1/4-20 X 3/4
4	121-1760	8	Spacer	23	104-7201	2	Nut-Nyloc 1/4-20 Flg
5	104-8301	12	Nut-Nyloc 3/8-16 Flg	24	116-5067	1	Bracket-Hose, Fuel (Double)
6	1-543509	4	Cone-Bearing Tapered Roller	25	116-3382	2	Guide-Hose, Support
7	116-5647	2	Seal-Grease	26	126-7200	1	Decal-Vantage Logo
8	121-7988-01	2	Fork-Caster	29	126-4345	1	Decal-Patent Ttco.Com
9	1-633508	6	Washer-Spring Disc	31	116-6981-01	1	Shield-Heat, Tall
10	3296-51	2	Nut-Nyloc 3/4-10	32	32144-4	1	Screw-HWH 1/4-20 X 1/2 Taptite
11	103-4882	2	Cap-Grease	33	116-6997-01	2	Guard-Hose
12	112-3810	2	Wheel/Tire And Bearing ASM	34	116-8152-03	1	Tube-Guard
13	116-9560-03	1	Motor Frame Weldment [black]	35	126-6573	2	Decal-X-Series
16	3231-22	6	Bolt-Carriage 3/8-16 X 1	36	116-8859	1	Control Pannel W/Decals
17	126-5015	1	ASM, Muffler Guard W/ Decal	37	63-8590	2	Screw-Button Head 1/4-20 X .62 Tf
				38	116-7688	1	Rod, Guard
				40	126-1364-03	1	Plate, Bumper Spacer

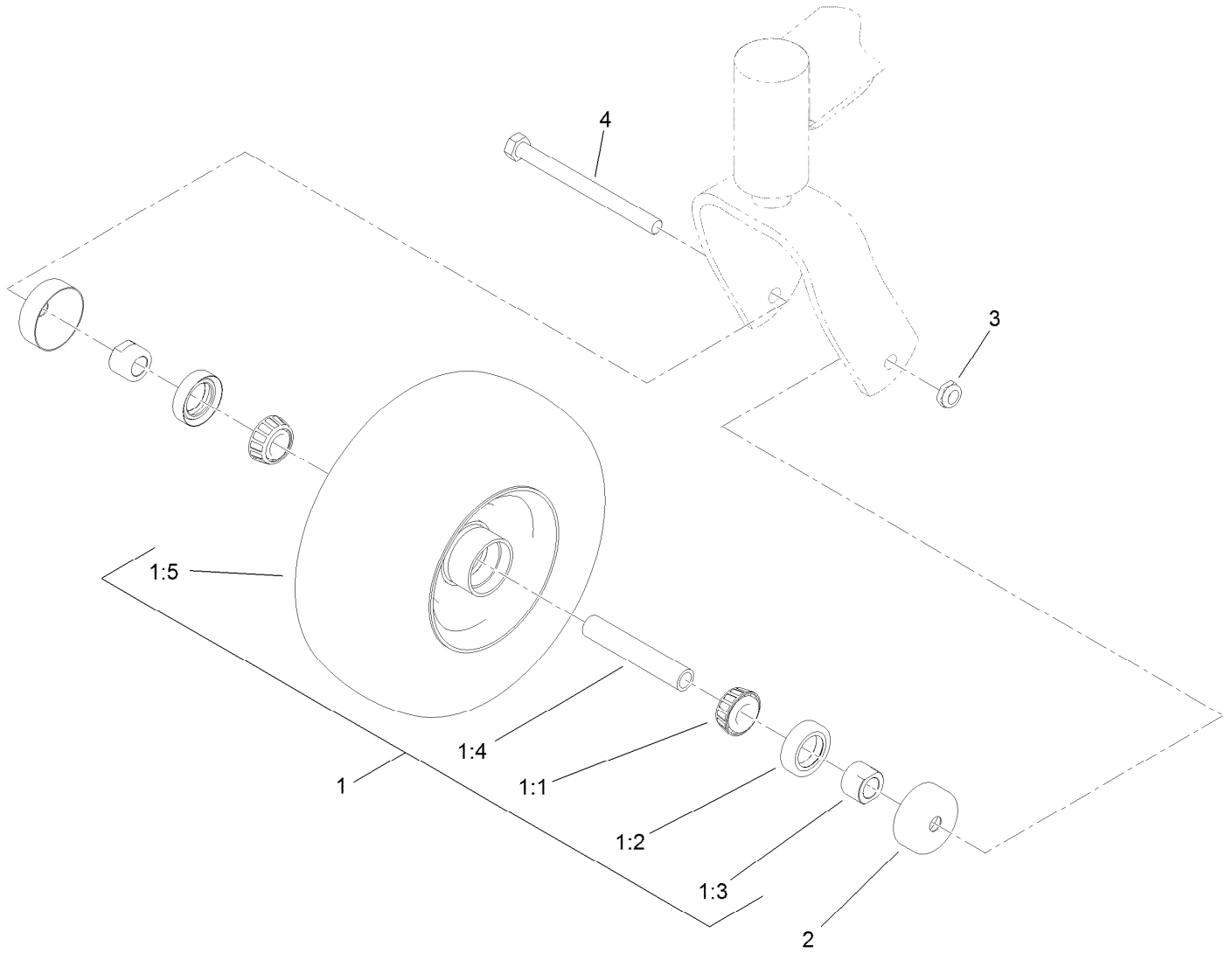
Tower W/Decals Assembly No. 126-7222



Tower W/Decals Assembly No. 126-7222 (continued)

<i>Ref.</i>	<i>Part Number</i>	<i>Qty.</i>	<i>Description</i>	<i>Ref.</i>	<i>Part Number</i>	<i>Qty.</i>	<i>Description</i>
2	116-9321	1	Decal-Control Panel Ecs	9	117-2718	1	Decal-Arrester, Spark
3	116-2040	1	Decal-Height Of Cut	10	114-0409	1	HOC Pin ASM
4	126-7202	1	Decal-LH Panel	11	3296-42	1	Nut-Nyloc 1/4-20
5	126-7203	1	Decal-RH Panel	12	1-633349	2	Spring-Compression
6	116-8772	1	Decal-Fuse	13	126-2921	2	Latch, Ecs
7	116-9164	1	Decal-Service Aid	14	126-2931	2	Screw-Shoulder
8	116-9165	2	Decal-Ecs Logo	15	126-6971	2	Decal-Exmark Logo

Wheel and Bearing Assembly No. 112-3810



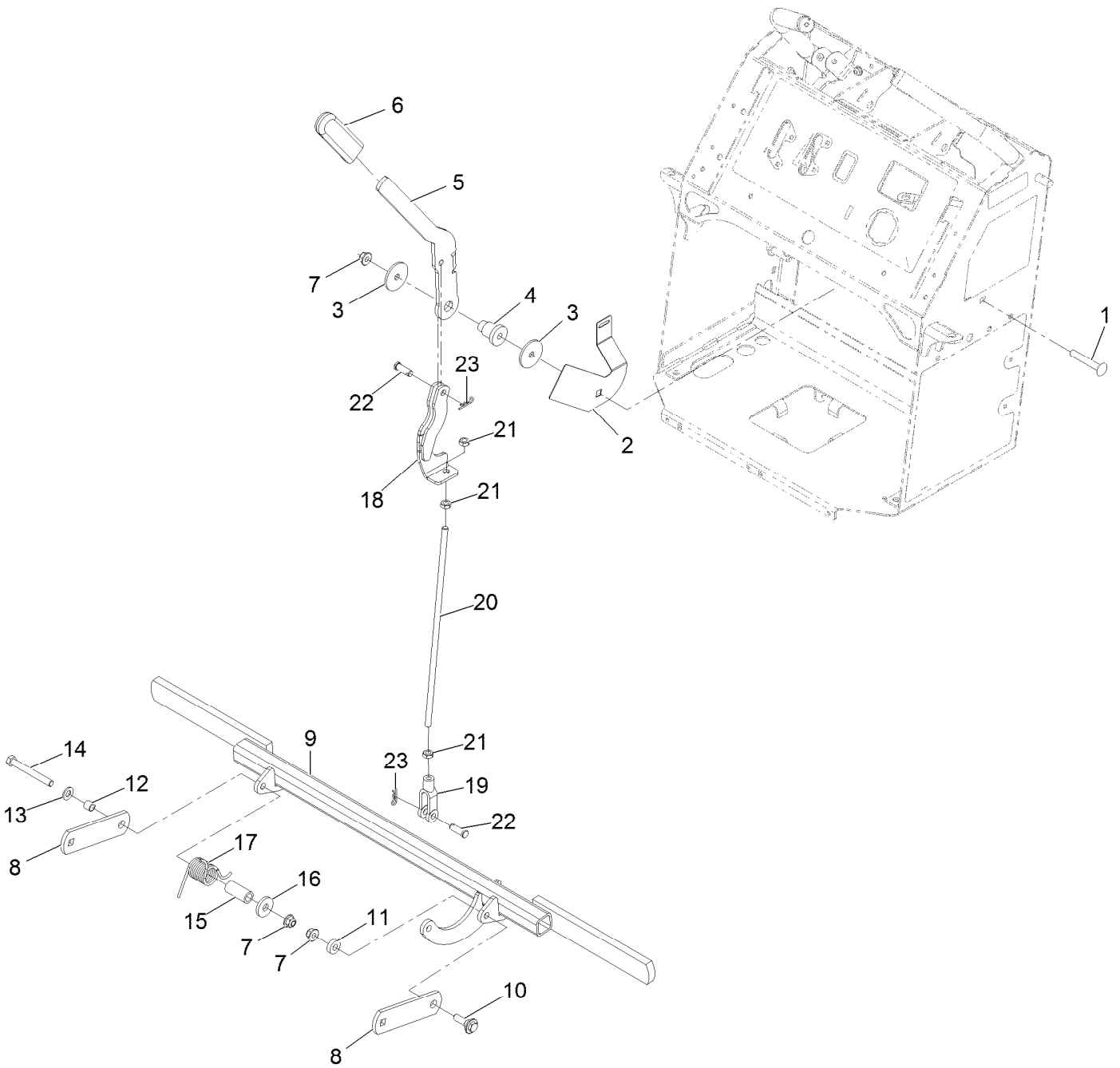
Wheel and Bearing Assembly No. 112-3810 (continued)

<i>Ref.</i>	<i>Part Number</i>	<i>Qty.</i>	<i>Description</i>	<i>Ref.</i>	<i>Part Number</i>	<i>Qty.</i>	<i>Description</i>
1		1	Wheel And Bearing ASM ●	1:4	126-5359	1	Axle ASM-Caster
1:1	1-633585	2	Bearing-Cone Tapered Roller	1:5	110-9965	1	Wheel And Tire ASM
1:2	103-0063	2	Seal-Double Lip	2	103-2768	2	Guard-Seal
1:3	103-3051	1	Spacer-Nut ■	3	3296-45	1	Nut-Nyloc 1/2-13 Thin
				4	325-20	1	Screw-HH 1/2-13 X 6

● Not serviced separately

■ Use Pro-Lock, Nut Type (P/N 1-840022, .5ml tube) on spacer nut

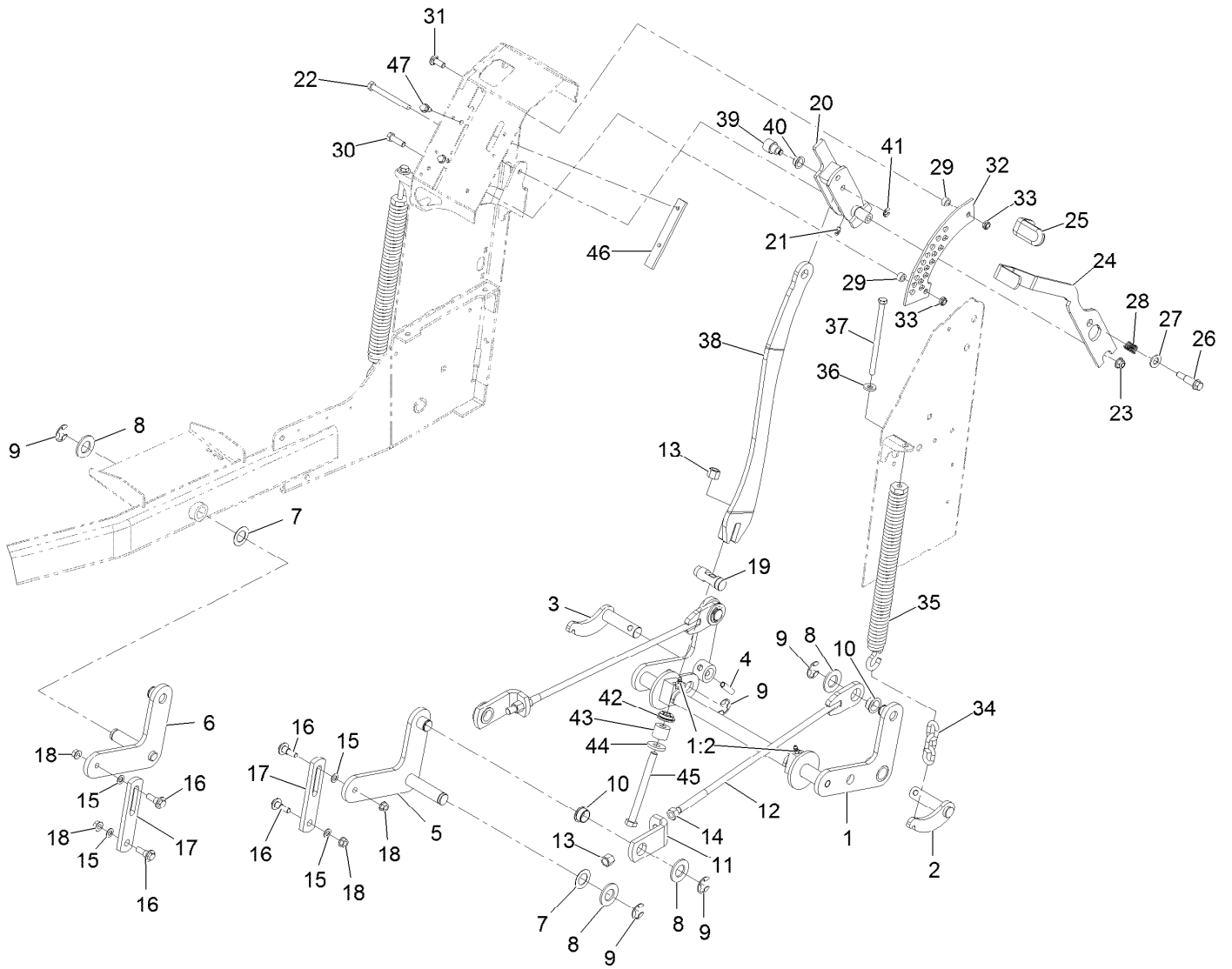
Park Brake Assembly



Park Brake Assembly (continued)

<i>Ref.</i>	<i>Part Number</i>	<i>Qty.</i>	<i>Description</i>	<i>Ref.</i>	<i>Part Number</i>	<i>Qty.</i>	<i>Description</i>
1	3231-44	1	Bolt-Carriage 3/8-16 X 2 1/2	12	117-9684	1	Spacer
2	117-0452-03	1	Plate-Switch, Brake	13	3256-24	1	Washer-3/8 Sae
3	63-7400	2	Washer-Rebound	14	323-20	1	Screw-HH 3/8-16 X 3-1/4
4	106-3214	1	Mount-Pulley	15	117-9683	1	Spacer
5	117-5759-03	1	Lever-Brake	16	117-9682	1	Spring-Torsion
6	1-633268	1	Grip-Lever	17	1-373034	1	Washer
7	104-8301	3	Nut-Nyloc 3/8-16 Flg	18	119-8780-03	1	Arm-Brake
8	114-5186-01	2	Support-Brake	19	1-633131	1	Yoke-Linkage, Brake
9	119-8730-03	1	Bar-Brake	20	119-7244	1	Rod-Brake
10	614672	1	Screw-Shoulder 3/8-16 X 1.295	21	3220-3	3	Nut-Jam 3/8-24
11	5-0652	1	Spacer	22	283-2	2	Pin-Clevis 3/8 X 1 1/6
				23	3290-307	2	Pin-Cotter

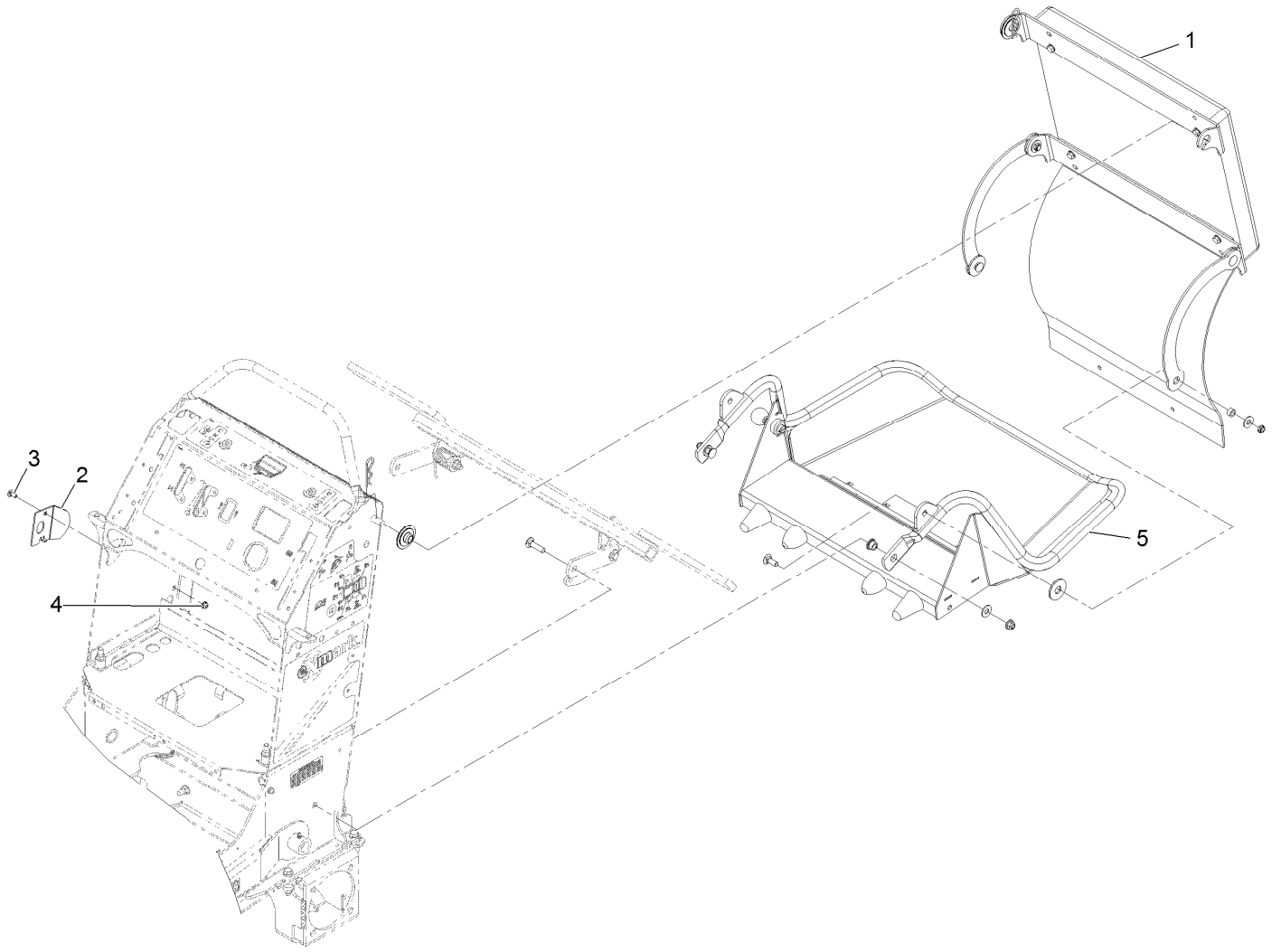
Deck Lift Assembly



Deck Lift Assembly (continued)

<i>Ref.</i>	<i>Part Number</i>	<i>Qty.</i>	<i>Description</i>	<i>Ref.</i>	<i>Part Number</i>	<i>Qty.</i>	<i>Description</i>
1	116-3103	1	Rear Crossshaft ASM	24	114-1878-03	1	Lever-HOC
1:2	302-11	2	Zerk-45° 1/4-28	25	1-633268	1	Grip-Lever
2	116-3104-01	1	Shaft-Pivot, LH	26	66-0561	1	Screw-Shoulder
3	116-3105-01	1	Shaft-Pivot, RH	27	3256-26	1	Washer-1/2 Sae
4	116-3107	2	Pin-Spiral	28	65-9940	1	Spring
5	121-5993-01	1	Arm-Lift, LH	29	111044	2	Bushing
6	121-5994-01	1	Arm-Lift, RH	30	323-7	1	Screw-HH 3/8-16 X 1 1/4
7	110-6767	2	Washer-Thrust	31	3231-22	1	Bolt-Carriage 3/8-16 X 1
8	3256-29	6	Washer-7/8 Sae	32	114-5307	1	Bracket-HOC
9	32151-103	7	E-Ring	33	3296-59	2	Nut-Nyloc 3/8-16 Thin
10	116-2909	4	Bearing-Flange	34	103-9859	2	Chain-Decklift
11	116-2901	2	Bracket-Lift Rod	35	116-0886	2	Extension Spring ASM
12	116-8676	2	Lift Rod ASM	36	98-5975	2	Washer-Spring Disc 3/8
13	3296-23	3	Nut-Nyloc 1/2-13	37	323-58	2	Bolt-HH 3/8-16 X 6 Tap
14	3217-9	2	Nut-Hex 1/2-13	38	116-2939	1	Bar-Lift
15	40-1940	4	Washer	39	116-3048	1	Hub-Pivot
16	109-9840	4	Screw-Hex Flange 3/8-16 X .80	40	116-3047	1	Bearing-Flange
17	117-0519	2	Link-Lift	41	32151-47	1	Ring-Retaining
18	32128-21	4	Nut-3/8-16 Flanged Side Lock	42	116-3625	1	Seat-Spring
19	114-5274	1	Pin-HOC	43	116-3241	1	Spring-Urethane
20	114-3512	1	HOC Handle ASM	44	92-2651	1	Washer
21	302-5	1	Zerk 1/4-28 Str Thrd Forming	45	325-22	1	Screw-HH 1/2-13 X 5 1/2
22	323-42	1	Screw-HH 3/8-16 X 3 3/4	46	116-3124	1	Skid-Handle, Lift
23	104-8301	1	Nut-Nyloc 3/8-16 Flg	47	32144-70	2	Screw-HWH 5/16-18 X 3/4 Tf

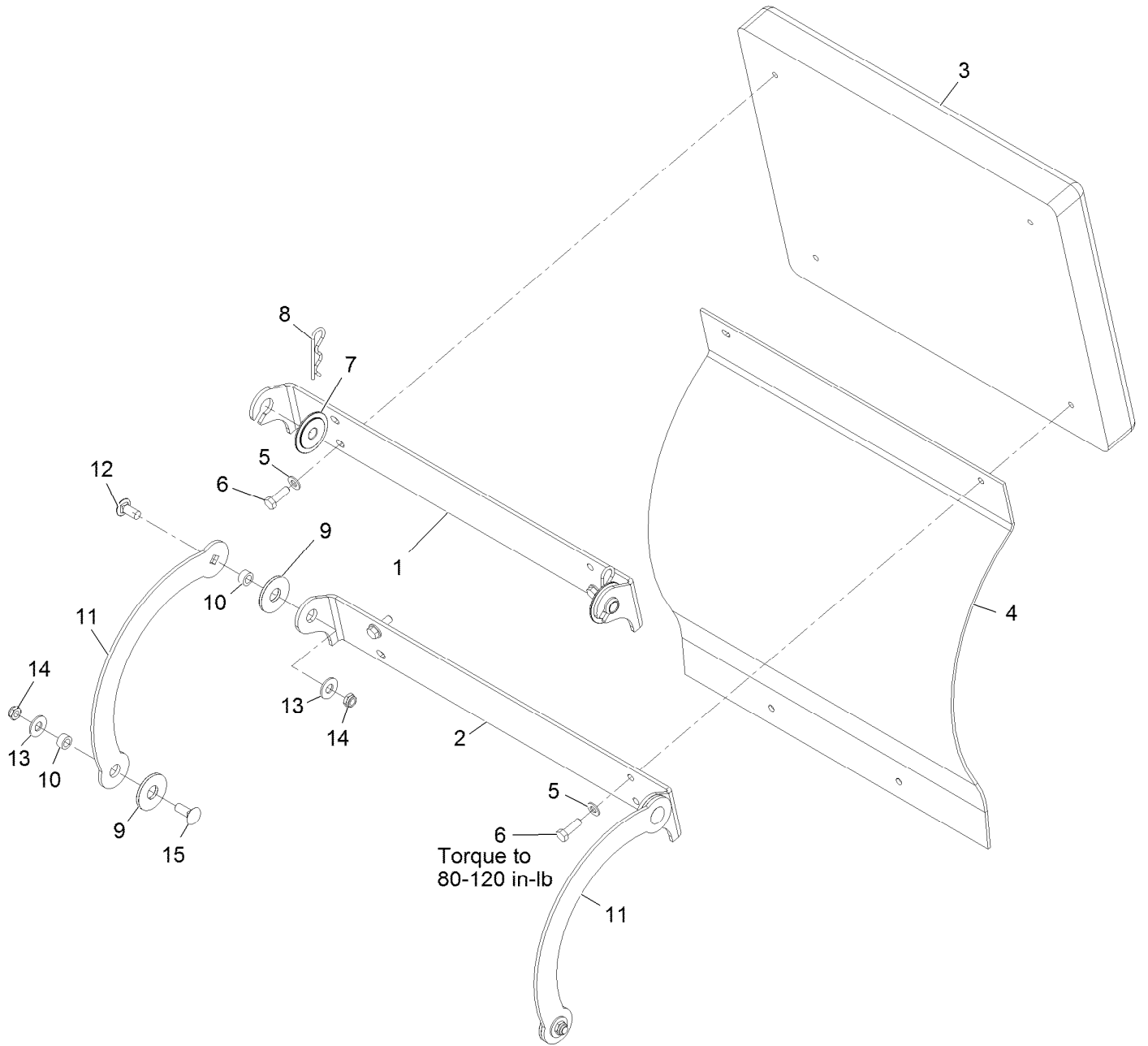
Platform Group



Platform Group (continued)

<i>Ref.</i>	<i>Part Number</i>	<i>Qty.</i>	<i>Description</i>	<i>Ref.</i>	<i>Part Number</i>	<i>Qty.</i>	<i>Description</i>
1	126-1210	1	ASM, Cushion	4	104-7201	1	Nut-Nyloc 1/4-20 Flg
2	119-7312	1	Plate-Striker	5	116-1804	1	ASM,Platform
3	3229-11	1	Bolt-Carriage 1/4-20 X 5/8				

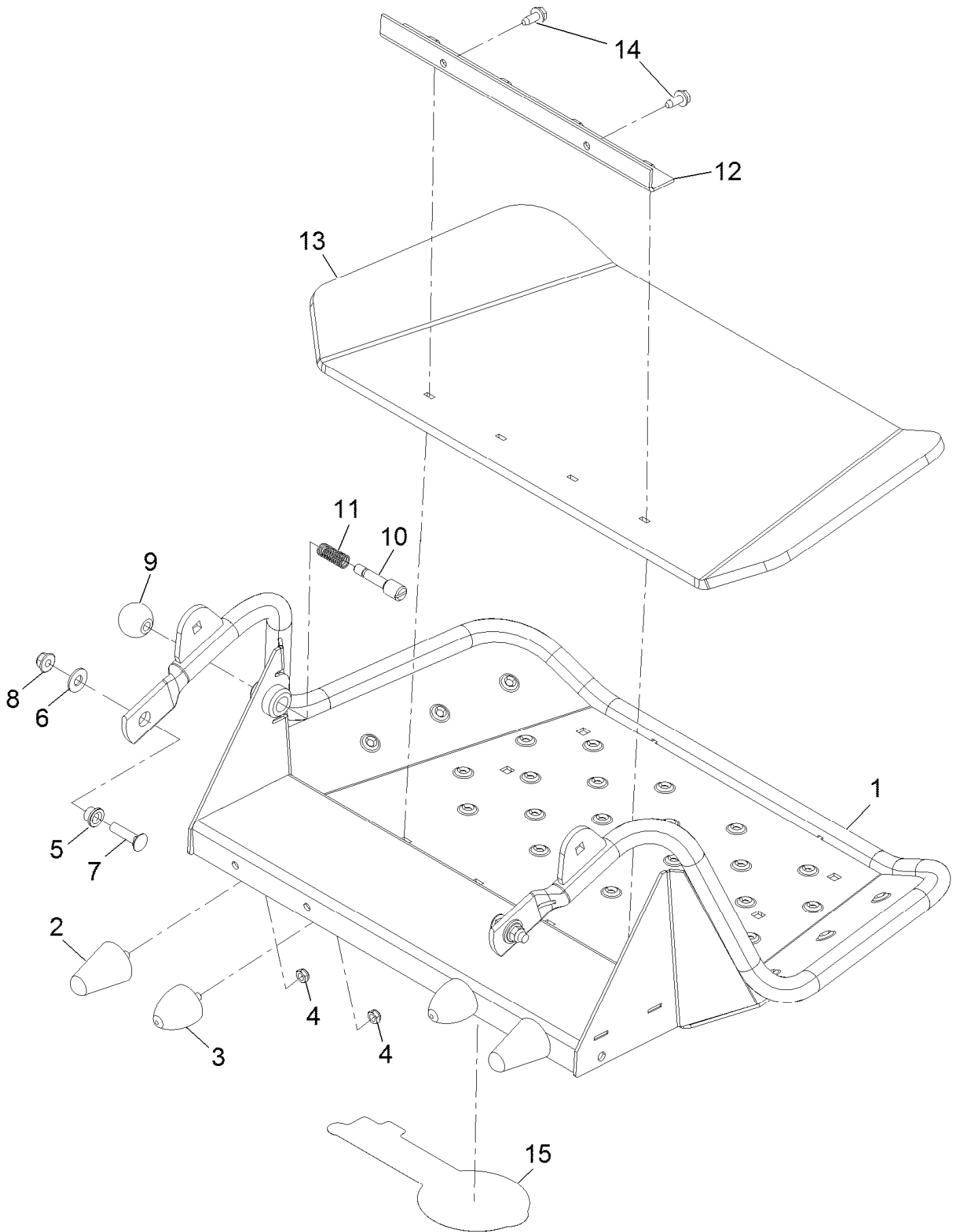
Cushion Assembly No. 126-1210



Cushion Assembly No. 126-1210 (continued)

<i>Ref.</i>	<i>Part Number</i>	<i>Qty.</i>	<i>Description</i>	<i>Ref.</i>	<i>Part Number</i>	<i>Qty.</i>	<i>Description</i>
1	116-2757-03	1	Hinge-Pad	8	3290-355	2	Pin-Hair
2	116-2061-03	1	Hinge-Pad	9	114-0463	4	Washer-Friction, Composite
3	116-1790	1	Pad,Grey Cushion	10	111044	4	Bushing
4	126-0362	1	Shield, Rear	11	114-1915-03	2	Link-Pad
5	3256-23	4	Washer-5/16 Sae	12	3231-27	2	Bolt-Carriage 3/8-16 X 7/8
6	116-0648	4	Screw-HH 5/16-18 X 1 W/Patch	13	3256-4	4	Washer-3/8 Std
7	116-2886	2	Slide-Bushing	14	3296-59	4	Nut-Nyloc 3/8-16 Thin
				15	3231-2	2	Bolt-Carriage 3/8-16 X 1

Platform Assembly No. 116-1804

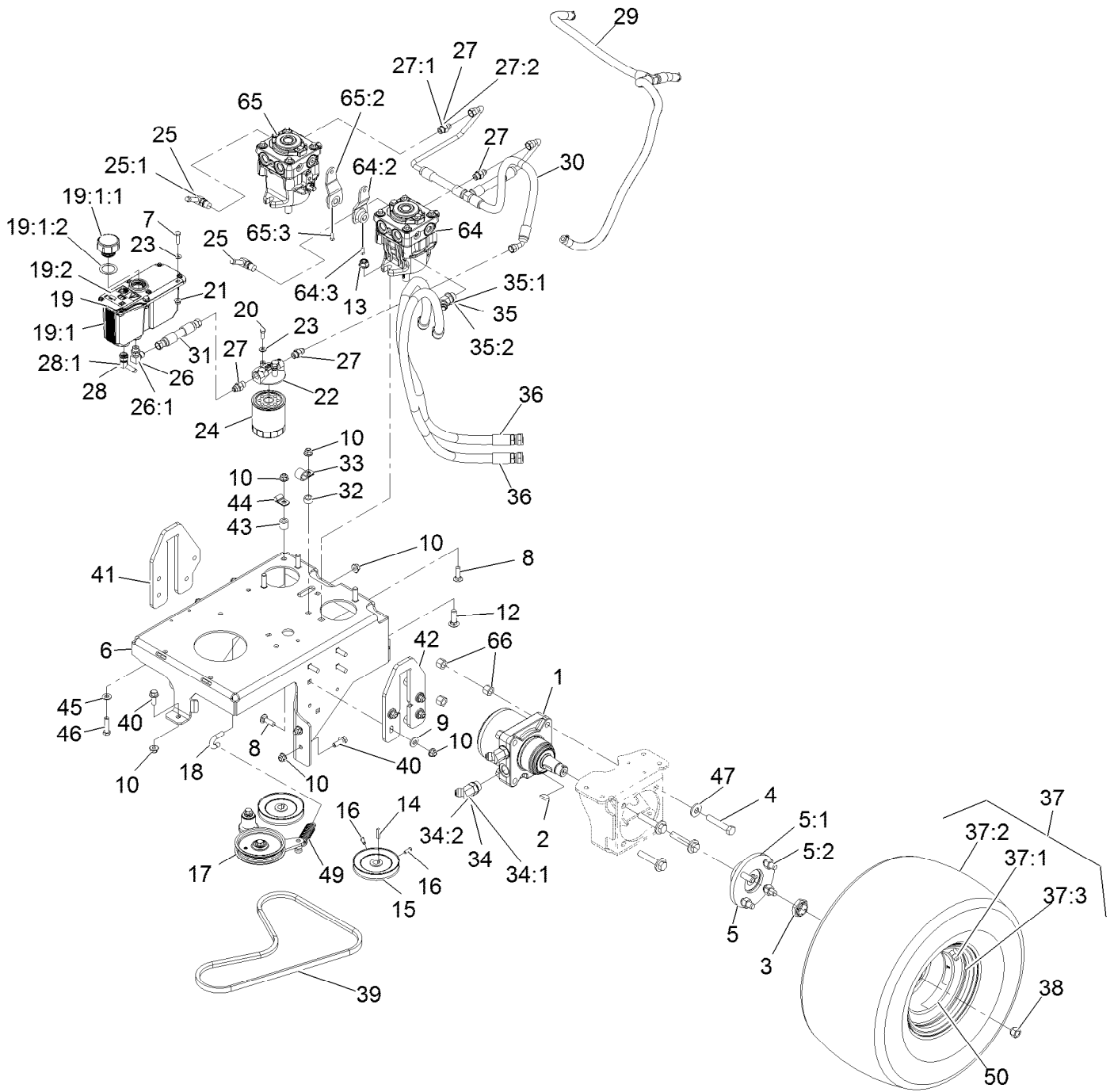


Platform Assembly No. 116-1804 (continued)

<i>Ref.</i>	<i>Part Number</i>	<i>Qty.</i>	<i>Description</i>	<i>Ref.</i>	<i>Part Number</i>	<i>Qty.</i>	<i>Description</i>
1	117-9641-03	1	Platform ASM	9	1-603175	1	Knob-Ball
2	114-1925	2	Bumper-Rubber	10	119-8650	1	Pin-Latch ●
3	114-1926	2	Bumper-Rubber	11	114-5348	1	Spring
4	3296-47	4	Nut-Nyloc 5/16-18 Thin	12	114-1920-03	1	Clamp-Shield
5	109-8788	2	Bushing-Flanged	13	126-7157	1	Mat, Platform
6	3256-4	2	Washer-3/8 Std	14	32144-70	2	Screw-HWH 5/16-18 X 3/4 Tf
7	3231-4	2	Bolt-Carriage 3/8-16 X 1 1/2	15	126-6991	1	Decal-Exmark Logo
8	104-8301	2	Nut-Nyloc 3/8-16 Flg				

● Use Pro-Lock, Nut Type (P/N 1-840022, .5ml tube) on threads.

Ground Drive Assembly



Ground Drive Assembly (continued)

Ref.	Part Number	Qty.	Description	Ref.	Part Number	Qty.	Description
1	126-1301	2	Motor-Wheel	28	103-1807	1	Fitting-Barbed, 45 DEG
2	3257-8	2	Key-Woodruff	28:1	237-42	1	O-Ring
3	116-1399	2	Locknut	29	116-9613	1	Asm-Hose
4	325-11	8	Screw-HH 1/2-13 X 2 3/4	30	116-2650	1	Hose Assembly - Charge
5	18-3209	2	Wheel Hub / Stud ASM	31	116-2604	1	HYD Hose ASM
5:1	10-6870-03	1	Hub-Wheel	32	1-653069	1	Spacer-Wheel
5:2	10-6830	4	Stud-Type, Drive	33	1-633396	1	Clip-Loom 5/8
6	116-7796-01	1	Weldment, Frame	34	1-523222	4	Fitting-HYD, 45 DEG
7	321-6	2	Screw-HH 1/4-20 X 1	34:1	1-603919	1	O-Ring-Sae #10
8	3231-25	9	Bolt-Carriage 3/8-16 X 1 1/4	34:2	1-603992	1	O-Ring-37 Flare #8
9	98-5975	8	Washer-Spring Disc 3/8	35	1-523221	4	Fitting-HYD, 45 DEG
10	104-8301	16	Nut-Nyloc 3/8-16 Flg	35:1	1-603920	1	O-Ring-Sae #8
12	3232-3	4	Bolt-Carriage 7/16-14 X 1 1/2	35:2	1-603992	1	O-Ring-37 Flare #8
13	114-8417	4	Nut-HF, NI	36	116-6902	4	HYD Hose ASM
14	1-807272	2	Key-5Mm X 5Mm X 25Mm	37	120-6465	2	Wheel/Tire ASM
15	105-5648	2	Pulley-Pump ■	37:1	116-4605	1	Rim-8 Inch
16	3241-5	4	Setscrew-SQH 1/4-20 X 5/8	37:2	120-6466	1	Tire
17	116-9980	1	Pump Idler ASM	37:3	232-27	1	Stem-Valve
18	116-8526	1	Anchor, Spring	38	242-50	8	Nut-Lug 1/2-20
19	116-2066	1	ASM,Reservoir W/Decals ▲	39	114567	1	Belt-V
19:1		1	Reservoir-HYD ●	40	3234-42	5	Screw HHF 3/8-16 X 1
19:1:1	103-1948	1	Cap-Reservoir, HYD	41	116-4922	1	Plate-Lift, RH
19:1:2	103-1949	1	Gasket-Cap	42	116-3546	1	Plate, Lift LH
19:2	115-4212	1	Decal-Warning	43	121-1760	1	Spacer
20	321-4	2	Screw-HH 1/4-20 X 3/4	44	116-3362	1	Clip-Tube
21	32128-32	2	Nut-Hex 1/4-20 Side Lock	45	3256-24	1	Washer-3/8 Sae
22	104-7836	1	Filter-Head	46	323-8	1	Screw-HH 3/8-16 X 1 1/2
23	3256-22	4	Washer-1/4 Sae	47	1-513435	8	Washer-Spring Disc 1/2
24	109-4180	1	Element, Oil Filter	49	108-4056	1	Spring-Extension
25	100-4887	2	Fitting-Barbed, 90 DEG	50	126-2055	2	Decal-Torque, Wheel Hub Lug
25:1	237-42	1	O-Ring	64	116-8846	1	Pump W/Arm - Left
26	103-1802	1	Fitting-HYD, 90 DEG	64:2	126-0334	1	Arm-Hydro
26:1	1-603921	1	O-Ring-Sae #6	64:3	3241-5	1	Setscrew-SQH 1/4-20 X 5/8
27	103-2156	4	Adapter-Straight	65	116-8847	1	Pump W/Arm -Right
27:1	1-603921	1	O-Ring-Sae #6	65:2	126-0334	1	Arm-Hydro
27:2	103-1020	1	O-Ring-37 Flare #6	65:3	3241-5	1	Setscrew-SQH 1/4-20 X 5/8
				66	3296-23	8	Nut-Nyloc 1/2-13

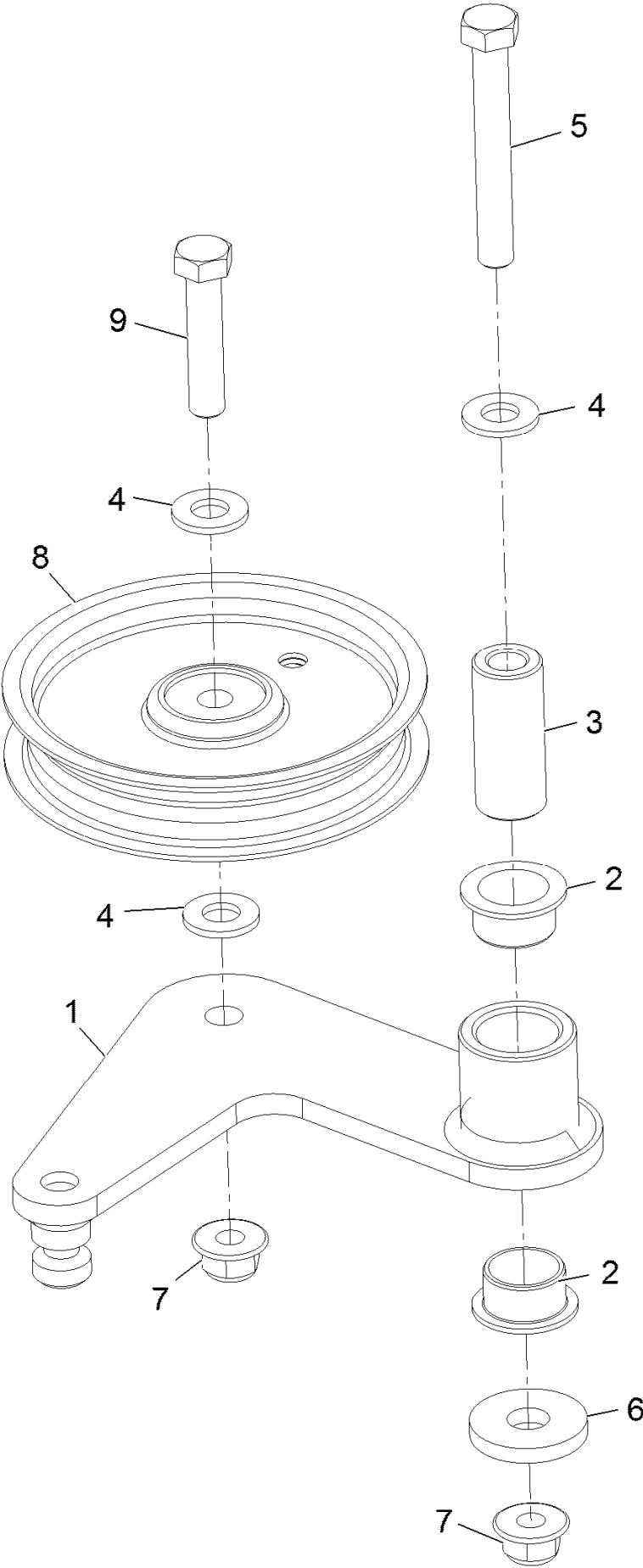
● Not serviced separately

▲ Use Exmark Premium Hydro Oil P/N 109-9828 (32oz)

◆ Use Pro-Lock, Nut Type (P/N 1-840022, .5ml tube) on threads.

■ Apply anti-seize compound in bore.

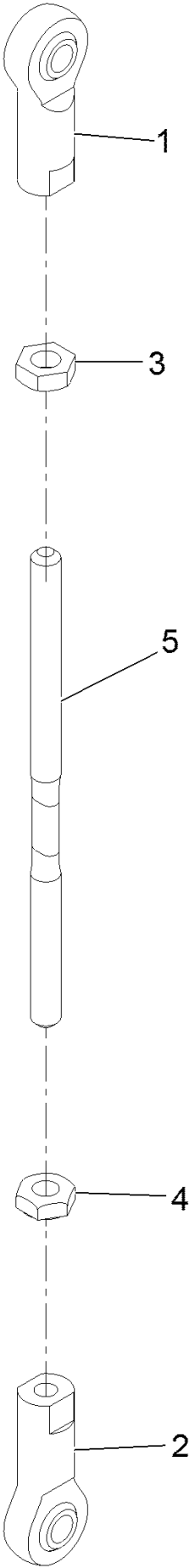
Pump Idler Assembly No. 116-9980



Pump Idler Assembly No. 116-9980 (continued)

<i>Ref.</i>	<i>Part Number</i>	<i>Qty.</i>	<i>Description</i>	<i>Ref.</i>	<i>Part Number</i>	<i>Qty.</i>	<i>Description</i>
1	116-8717	1	Idler Arm ASM	6	1-373034	1	Washer
2	109-8054	2	Bushing-Flanged	7	104-8301	2	Nut-Nyloc 3/8-16 Flg
3	116-8718	1	Spacer, Pivot	8	93-1622	1	Pulley-Idler
4	3256-24	3	Washer-3/8 Sae	9	323-9	1	Screw-HH 3/8-16 X 1 3/4
5	323-13	1	Screw-HH 3/8-16 X 2 3/4				

Vertical Adjust Link Assembly No. 116-7738

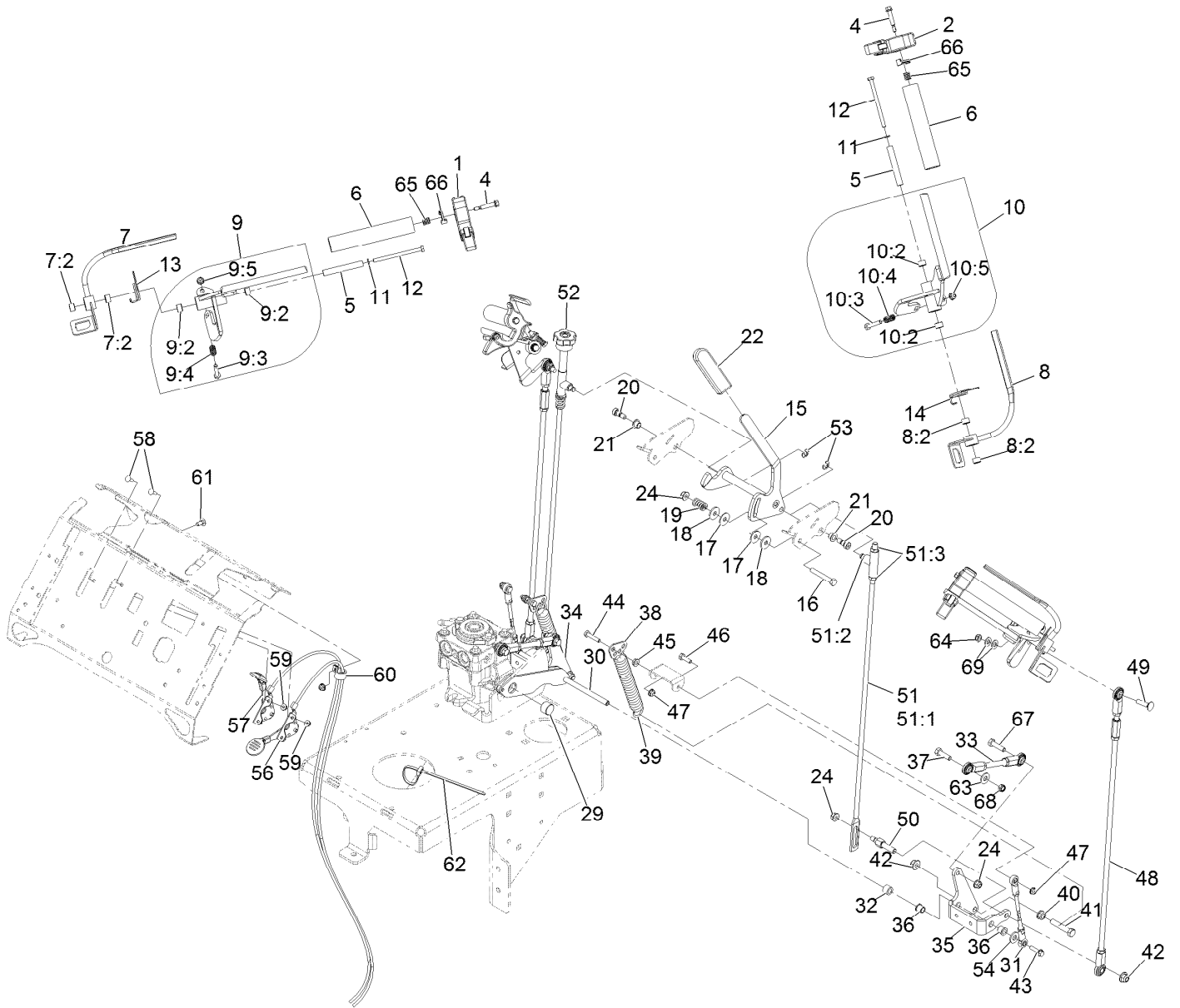


Vertical Adjust Link Assembly No. 116-7738 (continued)

<i>Ref.</i>	<i>Part Number</i>	<i>Qty.</i>	<i>Description</i>
1	2411-41	1	Rod End-Ball Joint
2	104-4013	1	Joint-Ball, LH
3	3220-1	1	Nut-Jam 1/4-28

<i>Ref.</i>	<i>Part Number</i>	<i>Qty.</i>	<i>Description</i>
4	104-3941	1	Nut-Jam
5	116-7737	1	Rod

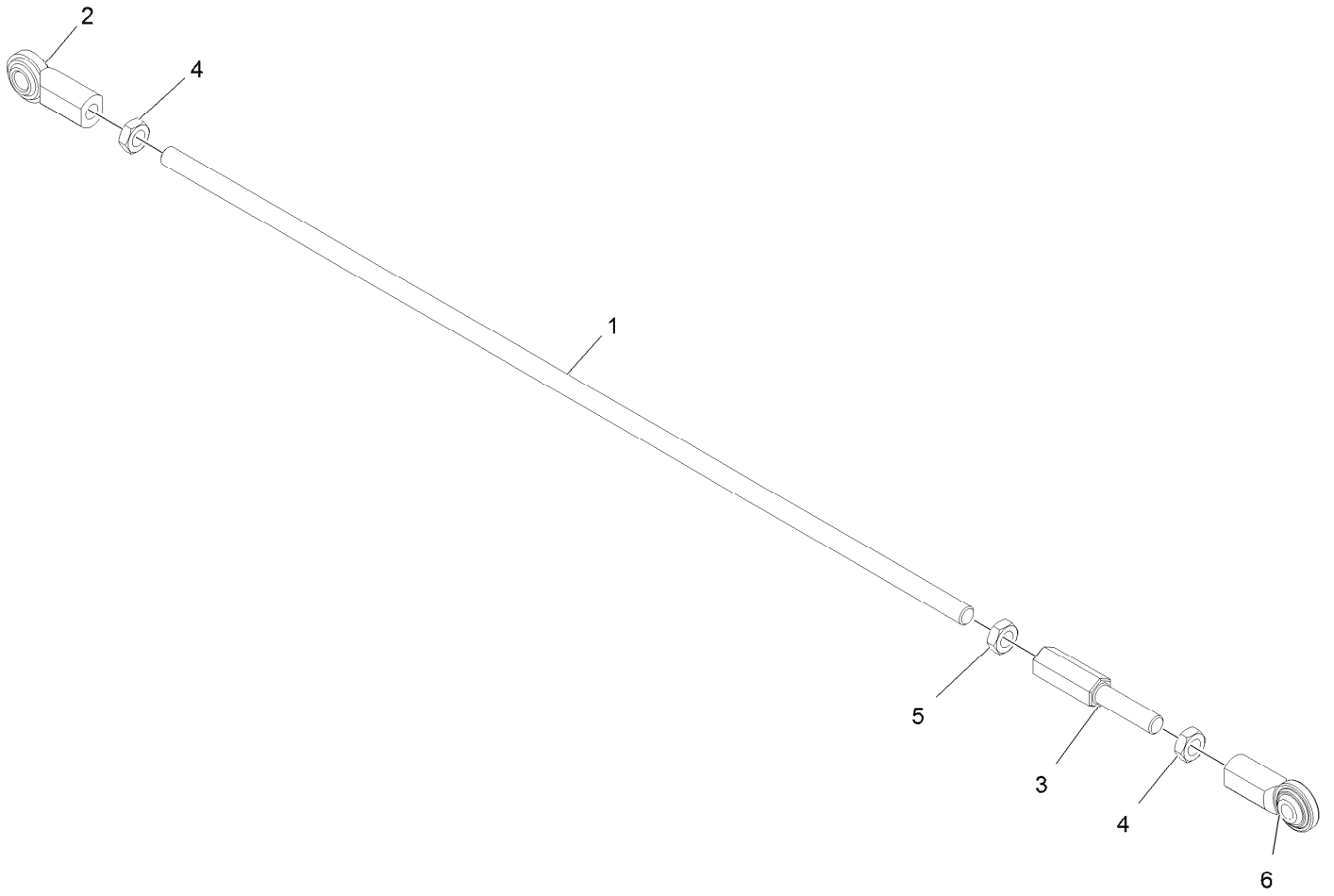
Controls Assembly



Controls Assembly (continued)

<i>Ref.</i>	<i>Part Number</i>	<i>Qty.</i>	<i>Description</i>	<i>Ref.</i>	<i>Part Number</i>	<i>Qty.</i>	<i>Description</i>
1	103-1371	1	Thumb Latch Asm RH	35	126-0336	1	Bellcrank-Lower, Lt
2	103-1372	1	Thumb Latch Asm LH	36	103-9928	4	Bearing
4	126-2931	2	Screw-Shoulder	37	3210-6	2	Bolt-HH 5/16-24 X 1 1/8
5	116-7725	2	Tube	38	126-0535	2	Link, Adjustable
6	103-0815	2	Grip-Bar, Handle	39	1-603402	2	Spring-Extension
7	116-7902	1	Opc-W/Bushing, RH	40	3290-357	2	Nut-Whizlock 3/8-16
7:2	1-413152	2	Bushing-Sleeve	41	323-10	2	Screw-HH 3/8-16 X 2
8	116-7903	1	Opc-W/Bushing, LH	42	104-8301	4	Nut-Nyloc 3/8-16 Flg
8:2	1-413152	2	Bushing-Sleeve	43	120-4654	2	Screw-HHF
9	126-6313	1	ASM, Rt Drive Lever	44	321-8	2	Screw-HH 1/4-20 X 1 1/4
9:2	1-413152	2	Bushing-Sleeve	45	32128-33	2	Nut-Whizlock 1/4-20
9:3	321-9	1	Screw-HH	46	321-5	2	Screw-HH 1/4-20 X 7/8
9:4	126-6176	1	Spring, Compression	47	104-7201	5	Nut-Nyloc 1/4-20 Flg
9:5	104-7201	1	Nut-Nyloc 1/4-20 Flg	48	126-6311	2	ASM, Motion Link
10	126-6312	1	ASM, Lt Drive Lever	49	3230-3	2	Bolt-Carriage 5/16-18 X 1 1/4
10:2	1-413152	2	Bushing-Sleeve	50	116-9167	2	Stud-Control, Speed
10:3	321-9	1	Screw-HH	51	116-8679	1	ASM, Rod Left
10:4	126-6176	1	Spring, Compression	51:1	116-9938	1	Rod, Left
10:5	104-7201	1	Nut-Nyloc 1/4-20 Flg	51:2	116-8683	1	Swivel
11	3253-3	2	Washer-Lock 1/4	51:3	3220-3	2	Nut-Jam 3/8-24
12	321-28	2	Screw-HH	52	116-8681	1	ASM, Rod Right
13	116-7774	1	Spring, Torsion	53	32151-47	2	Ring-Retaining
14	116-7768	1	Spring, Torsion	54	66-2920	2	Washer-Friction
15	126-0302	1	Speed Control ASM	56	116-4276	1	Control-Throttle
16	322-11	1	Screw-HH 5/16-18 X 2 1/4	57	116-4277	1	Control-Choke
17	1-323244	2	Washer-Friction	58	1-807533	4	Bolt-Carriage #10-24 X 5/8
18	1-603716	2	Washer-Friction Disc	59	32128-17	4	Nut-Flange #10-24 Top Lock
19	1-323245	1	Spring-Compression	60	2412-87	1	Clamp-Cable
20	1-809056	2	Screw-Sh 5/16-18 X 1 3/8	61	3229-11	1	Bolt-Carriage 1/4-20 X 5/8
21	116-8615	2	Bushing	62	3290-378	1	Tie-Cable
22	103-5994	1	Grip-Handle, Steering	63	3256-3	2	Washer-5/16 Std
24	104-8300	5	Nut-Nyloc 5/16-18 Flg	64	3296-47	2	Nut-Nyloc 5/16-18 Thin
29	116-4203	1	Pin-Bellcrank Link Retaining	65	1-633349	2	Spring-Compression
30	116-8563	1	Bellcrank Link ASM	66	126-2921	2	Latch, Ecs
31	116-7738	2	ASM, Link	67	322-6	2	Screw-HH 5/16-18 X 1 1/4
32	52-2480	2	Spacer-Wheel	68	3296-20	2	Nut-5/16 Nyloc-Thin
33	126-6235	2	ASM, Motion Link	69	3256-23	4	Washer-5/16 Sae
34	126-0335	1	Bellcrank-Lower, Rt				

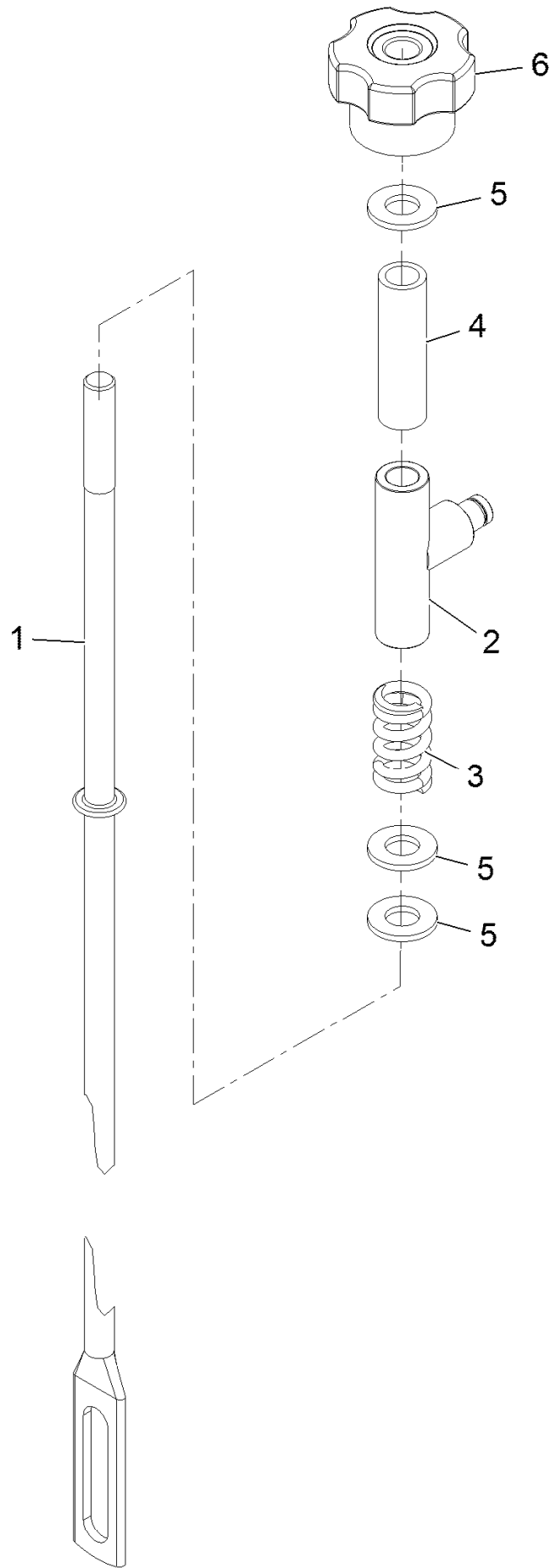
Motion Linkage Assembly



Motion Linkage Assembly (continued)

<i>Ref.</i>	<i>Part Number</i>	<i>Qty.</i>	<i>Description</i>	<i>Ref.</i>	<i>Part Number</i>	<i>Qty.</i>	<i>Description</i>
1	126-5270	1	Linkage, Motion	4	3220-3	2	Nut-HJ
2	103-0608	1	Joint-Ball, End	5	3220-16	1	Nut-Jam, LH
3	116-4755	1	Rod-Adjustment	6	103-2463	1	Joint, .31 Ball End

Rod Assembly No. 116-8681

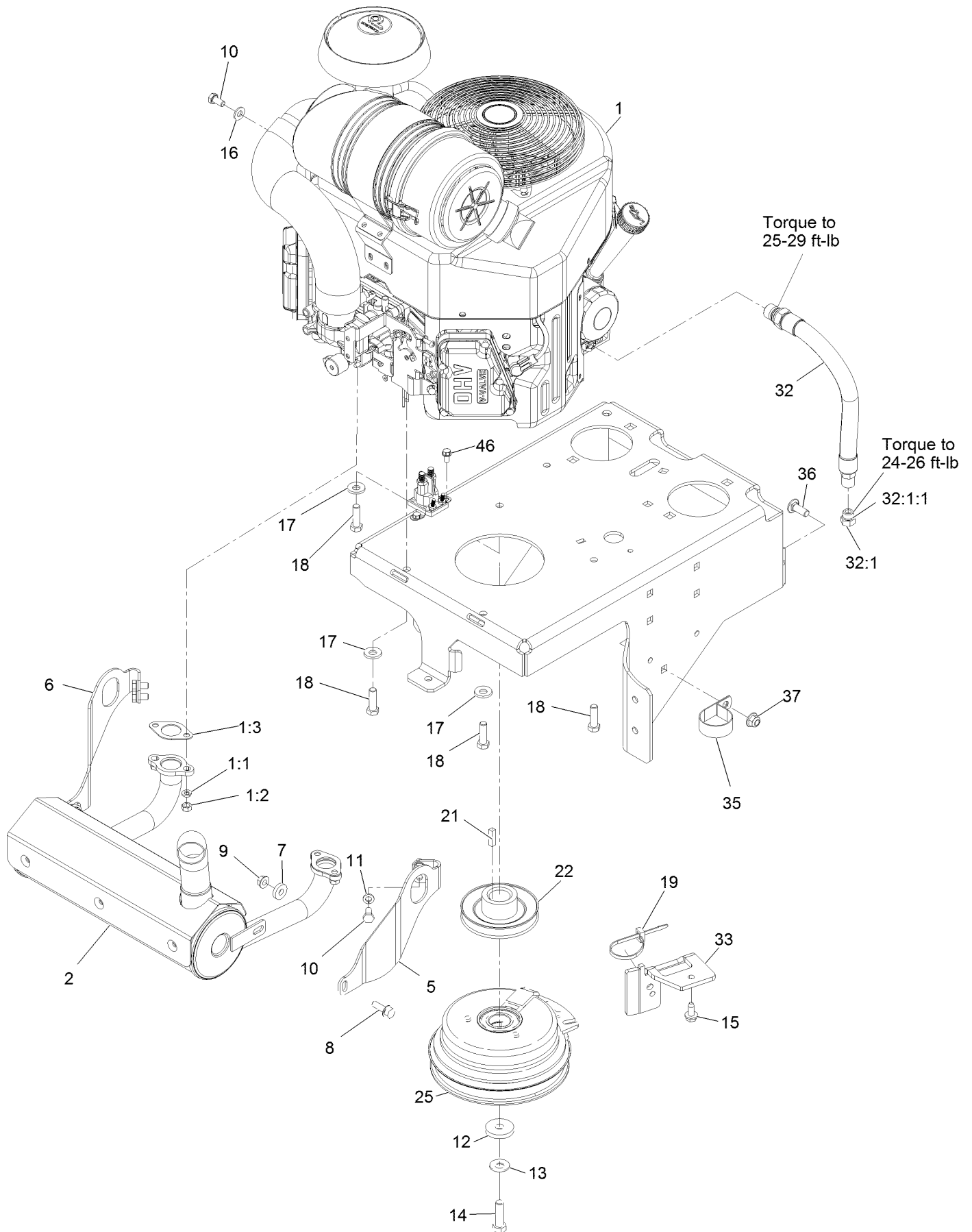


Rod Assembly No. 116-8681 (continued)

<i>Ref.</i>	<i>Part Number</i>	<i>Qty.</i>	<i>Description</i>
1	116-9939	1	Rod, Right
2	116-8683	1	Swivel
3	116-7560	1	Spring-Compression

<i>Ref.</i>	<i>Part Number</i>	<i>Qty.</i>	<i>Description</i>
4	116-8684	1	Spacer
5	3256-24	3	Washer-3/8 Sae
6	116-9172	1	Knob

Engine Assembly



Engine Assembly (continued)

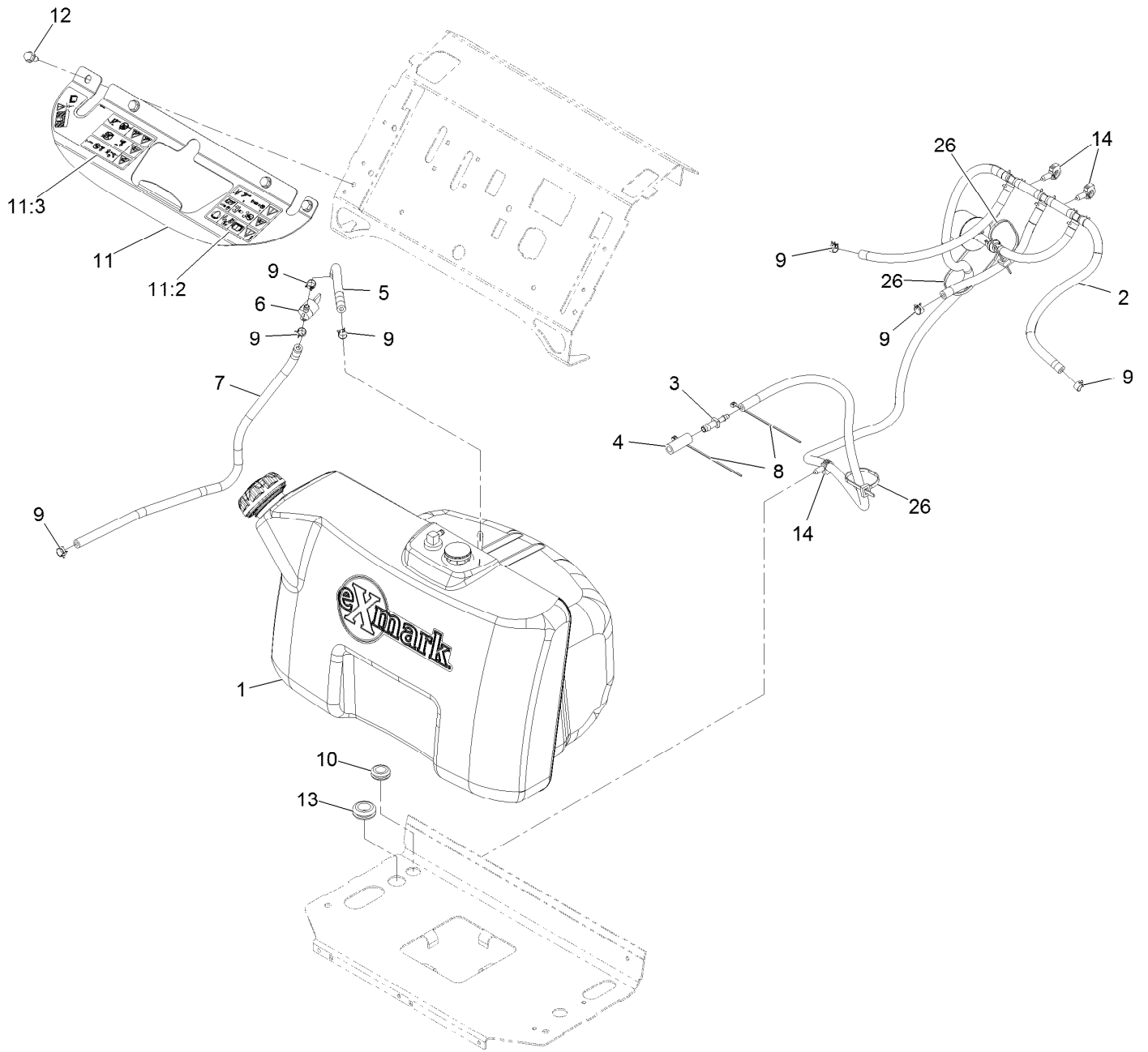
<i>Ref.</i>	<i>Part Number</i>	<i>Qty.</i>	<i>Description</i>	<i>Ref.</i>	<i>Part Number</i>	<i>Qty.</i>	<i>Description</i>
1		1	Engine Kawasaki ●■	16	33094-00	1	Washer
1:1	114-3550	4	Washer-Spring Lock M8	17	98-5975	3	Washer-Spring Disc 3/8
1:2	114-3549	4	Nut-M8	18	323-7	4	Screw-HH 3/8-16 X 1 1/4
1:3	1-653313	2	Gasket-Exhaust	19	3290-378	1	Tie-Cable
2	116-8747	1	Muffler, Kawasaki, 22-26	21	1-807259	1	Key-Machine 1/4 X 1/4 X 1
5	116-2353	1	Bracket-Muffler Mount, LH	22	116-3882	1	Pulley
6	116-2354	1	Bracket-Muffler Mount, RH	25	116-8517	1	Clutch-200 Ft-Lb, 1.125 Bore - No D Driv
7	104-7658	2	Spacer	32	116-4924	1	Asm-Hose Oil Drain W/Plug
8	3234-29	2	Screw-HH Flg 5/16-18 X 1	32:1	353-508	1	Plug-W/O-Ring
9	32128-25	2	Nut-Hex 5/16-18 Side Lock	32:1:1	237-42	1	O-Ring
10	33114-016	5	Screw-HH M8-1.25 X 16Mm	33	116-3811-01	1	Bracket-Anchor, Clutch
11	3253-4	4	Washer-Lock 5/16	35	2412-147	1	Clamp
12	107-4136	1	Washer	36	3231-22	1	Bolt-Carriage 3/8-16 X 1
13	1-603610	1	Washer-Spring Disc 7/16	37	104-8301	1	Nut-Nyloc 3/8-16 Flg
14	3212-6	1	Screw-HH 7/16-20 X 1 1/2 ▲	46	32144-4	2	Screw-HWH 1/4-20 X 1/2 Taptite
15	32144-70	1	Screw-HWH 5/16-18 X 3/4 Tf				

● Not serviced separately

▲ Use Pro-Lock, Nut Type (P/N 1-840022, .5ml tube) on threads.

■ Obtain parts from www.kawpowerepc.com

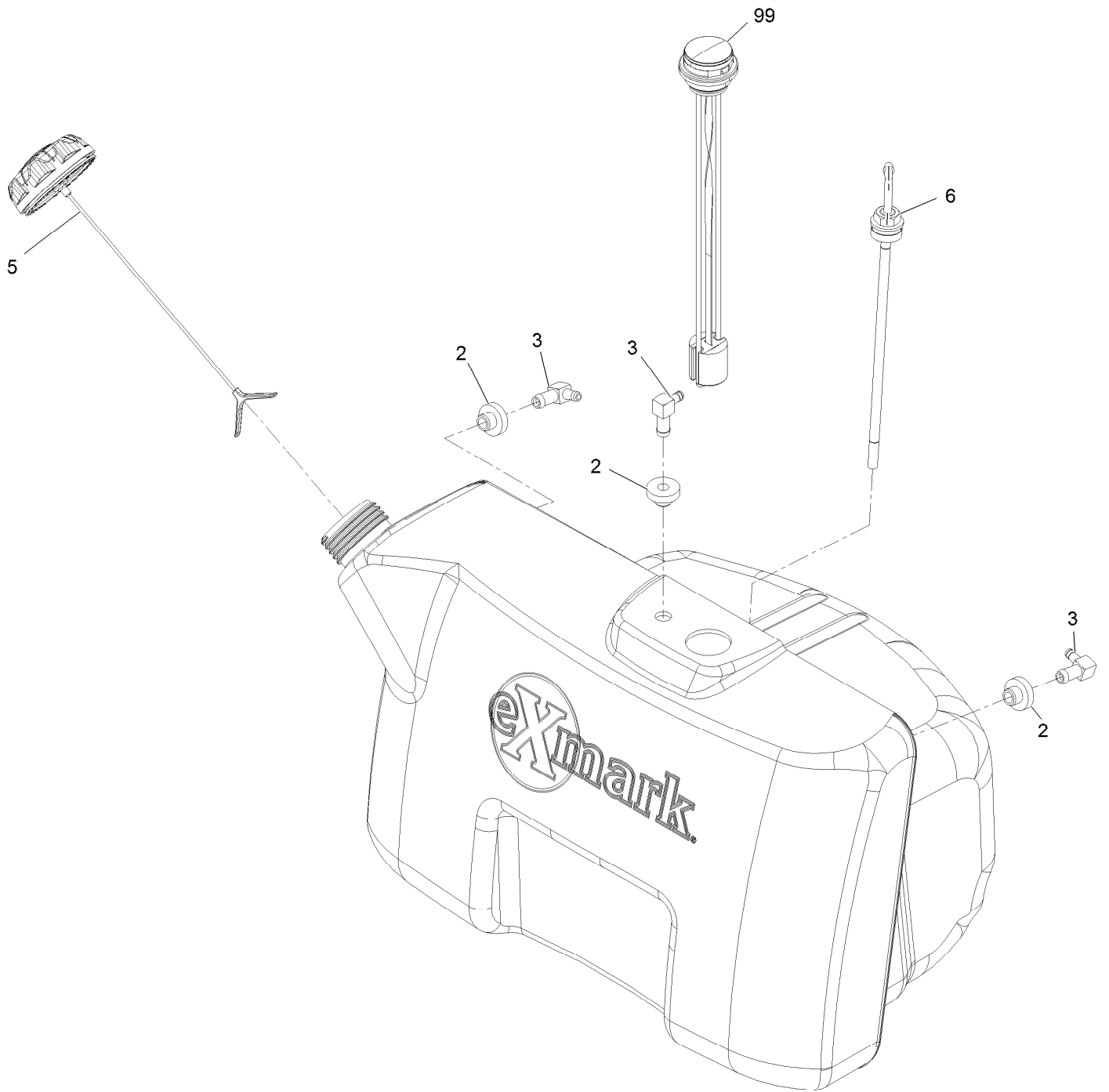
Fuel Assembly



Fuel Assembly (continued)

<i>Ref.</i>	<i>Part Number</i>	<i>Qty.</i>	<i>Description</i>	<i>Ref.</i>	<i>Part Number</i>	<i>Qty.</i>	<i>Description</i>
1	126-6922	1	Tank ASM-	10	112-7069	1	Grommet
2	116-5096	1	Vent ASM	11	116-9193	1	Bracket-Tank
3	116-5072	1	Fitting-Straight	11:2	116-9143	1	Decal-Warning LH
4	115-3392	1	Hose-Fuel	11:3	116-9144	1	Decal-Warning RH
5	107-9297	1	Hose-Fuel	12	32144-70	4	Screw-HWH 5/16-18 X 3/4 Tf
6	1-603770	1	Valve-Fuel	13	117-2781	1	Grommet
7	109-0301	1	Hose-Fuel	14	32180-040	3	Clip-Harness
8	1-303287	2	Tie-Cable 5 1/2 (Small)	26	3290-378	3	Tie-Cable
9	2412-98	7	Clamp-Hose				

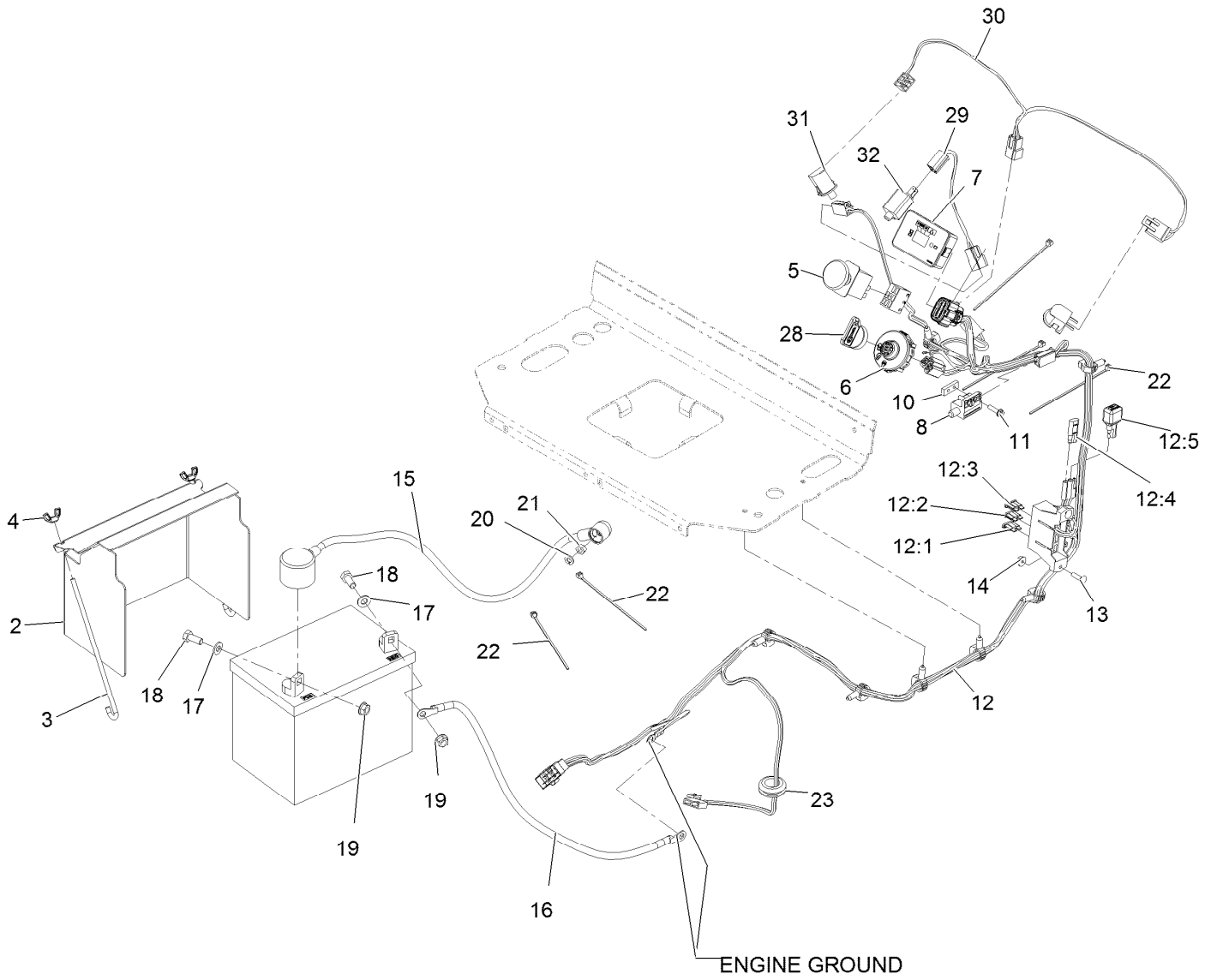
Fuel Tank Assembly No. 126-6922



Fuel Tank Assembly No. 126-6922 (continued)

<i>Ref.</i>	<i>Part Number</i>	<i>Qty.</i>	<i>Description</i>	<i>Ref.</i>	<i>Part Number</i>	<i>Qty.</i>	<i>Description</i>
2	46-6560	3	Bushing	6	116-3408	1	Fitting-Fuel, Bulkhead
3	1-643172	3	Elbow-90 DEG	99	126-6924	1	Kit, Fuel Gage Replacement
5	126-1789	1	Cap-Fuel, Ratcheting				

Electrical Assembly



Electrical Assembly (continued)

<i>Ref.</i>	<i>Part Number</i>	<i>Qty.</i>	<i>Description</i>	<i>Ref.</i>	<i>Part Number</i>	<i>Qty.</i>	<i>Description</i>
2	117-0543-01	1	Cover-Battery	14	3290-148	2	Nut-Whizlock #10-24
3	1-633651	2	Bolt-Holddown	15	115-3864	1	Cable-Battery, Positive
4	1-543792	2	Wingnut-Nyloc 1/4-20	16	105-0836	1	Cable-Battery, Black
5	114-0279	1	Switch-PTO	17	3256-23	2	Washer-5/16 Sae
6	117-2222	1	Switch-Ignition	18	322-3	2	Screw-HH 5/16-18 X 3/4
7	116-8893	1	Module-Hour Meter	19	109-5715	2	Nut-Hex Flange 5/16-18
8	1-513152	1	Switch-Closed, Normally	20	3253-3	1	Washer-Lock 1/4
10	1-633181	2	Plate-Tapped	21	3217-5	1	Nut-Hex 1/4-20
11	32105-13	4	Screw-HWH #10-24 X 3/4	22	1-303287	5	Tie-Cable 5 1/2 (Small)
12	116-4615	1	Harness-Wire ●	23	117-2781	1	Grommet
12:1	109103	1	Fuse-Blade, 30 Amp	28	103-2106	1	Key-Exmark Logo
12:2	109102	1	Fuse-Blade, 25 Amp	29	116-8845	1	Harness-Neutral
12:3	218-578	1	Fuse-Blade, 10 Amp	30	116-8844	1	Harness-Opc
12:4	116-0053	1	Cap-Plug	31	82-2190	2	Switch-Bail
12:5	103-3895	1	Diode	32	1-513051	1	Switch-Open, Normally
13	3229-20	2	Screw-CARR				

● Use dielectric grease on all unsealed connectors and terminals only. Do not apply in sealed connectors.

Notes:

Notes:

Notes:



MAXIMIZE THE PERFORMANCE OF YOUR EXMARK MACHINE.



EXMARK® PREMIUM ENGINE OIL

Exmark now offers a family of engine oil viscosities to perform well in any environment. Each viscosity has the same synthetic formulation to give you what you need in punishing conditions. We designed each grade to the highest quality, making it ideal even for diesel applications. Coupled with Exmark Premium Fuel Treatment, we have the performance products to make your machine hum.

EXMARK PREMIUM ENGINE OIL SAE 30/10W-30

- Meets zero shear requirements of a straight grade SAE 30 as well as the cold temp properties of a 10W-30.
- Most versatile oil in the industry.
- Superior corrosion protection over conventional oil - even in corrosive, humid environments.

EXMARK PREMIUM ENGINE OIL SAE 20W-50

- Perfect for your big block engine, or any application in severe service.
- Same full synthetic formulation as all other Exmark Premium viscosities.
- Also effective for use in severe service small block engines.

EXMARK PREMIUM ENGINE OIL SAE 10W-50

- Full synthetic formulation gives you peak performance. Don't settle for less.
- Wide span multi-grade combines easy starting in cold weather with maximum protection in high temperature operation.
- Reduce friction & wear over standard mineral formulations.

EXMARK PREMIUM ENGINE OIL SAE 0W-40

- The perfect choice for when the weather turns cold or unpredictable, and your Exmark UTV has to perform.
- Commercial quality for severe service.
- Advanced additive package helps prevent corrosion from long-term storage.

EXMARK PREMIUM ENGINE OIL UTV FORMULATION

- 4-cycle high-temp formulation.
- Heavier viscosity, full synthetic, perfect for your UTV.

EXMARK PREMIUM UTV EXTREME CONDITIONS GEAR OIL

- SAE 80W-90, designed to keep your UTV performing at its peak.
- Shear stable, hypoid gear lube.
- Includes a premium additive system to combat wear, oxidation, rust & corrosion.

Available from your local Exmark dealer. Find your closest dealer at exmark.com

EXMARK ACCESSORIES AND OPTIONS*

MID-MOUNT RIDING ACCESSORIES AND OPTIONS

CUSTOM RIDE SEAT SUSPENSION SYSTEM	OPERATOR CONTROLLED DISCHARGE
FULL SUSPENSION SEAT	SUN SHADE
DECK LIFT ASSIST KIT	TRASH CONTAINER
HITCH KIT	TURF STRIPER
LIGHT KIT	ULTRA VAC COLLECTION SYSTEM
12V POWER PORT	ULTRA VAC QUICK DISPOSAL SYSTEM
MICRO-MULCH SYSTEM	

OUT-FRONT RIDING ACCESSORIES AND OPTIONS

CUSTOM RIDE SEAT SUSPENSION SYSTEM	SNOW BLADE
DUAL-TAIL WHEEL	SNOWBLOWER
FLOOR PAN EXTENDER	SUN SHADE
HITCH KIT	TRASH CONTAINER
LIGHT KIT	ULTRA VAC COLLECTION SYSTEM
MICRO-MULCH SYSTEM	ULTRA VAC QUICK DISPOSAL SYSTEM
ROLL OVER PROTECTION SYSTEM (ROPS)	WEATHER CAB

WALK-BEHIND ACCESSORIES AND OPTIONS

GRASS CATCHER	TURF STRIPER
MICRO-MULCH SYSTEM	STANDON

*Some accessories and options not available for some models.

Place Model No. and Serial No.
Label Here (Included in the Literature
Pack) or Fill in Below

Model No. _____

Serial No. _____

Date Purchased _____

Engine Model No. and Spec. No. _____

Engine Serial No. (E/No) _____

© 2015 Exmark Mfg. Co., Inc.
Industrial Park Box 808
Beatrice, NE 68310
All Rights Reserved

Part No. 4502-625 Rev. A
(402) 223-6300
Fax (402) 223-5489
Printed in the USA.

