

PLANTER PERFORMANCE SPRING CHECKLIST

PREPARE YOUR PLANTER FOR OPTIMUM PERFORMANCE

3000/3005 Series Row Unit



KINZE
TRUE. BLUE. Advantage.

KINZE.COM

Refer to applicable Operator & Parts Manual for planter specific maintenance and parts information.

SAFETY

Warning Lights. operate correctly
SMV Sign visible and reflective
Safety Warning Signs. condition/clean

Reflectors/Reflective Decals condition/clean

HITCH & TONGUE

Clevis. wear
Hitch level during operation
Safety Chain correctly routed and attached
Tongue Wear Pads. wear/adjustment
Hardware. tight

PTO PUMPS & MOUNT

Gear Pump & Variable Displacement Pump
Alignment verify/adjust
Chain verify/adjust
Hoses. routing/retention/wear
Coupler inspect/lubricate
Oil level verify/fill

FRAME & TRANSPORT SYSTEMS

Frame
Welds/Structural Members . . . cracks and failure
Hardware. tight
Hydraulic System leaks and damage
Wing and Transport Tires pressure
Wing Hinge and Pivot wear and damage

Row Markers

Disc Blades wear
Bearings. wear/failure
Stand. adjustment and pad wear
Mounting Hardware. tight
Operating Speed verify and adjust
Chain tightness

Transport System

Safety Latch inspect operation/adjust
Wheel Bearings grease
Mud Scrapers adjust
Lug Nuts/Bolts and Spindle Bolts. torque
Center Post Wear Pads . . . hardware/adjustment
Cam Follower adjustment
Toolbar Height. confirm
3000/3005 20 to 22"; 4000/4005/5000 24"
Lubrication refer to manual

PARTS NEEDED

DRIVES

Wheel Modules wear/lubrication
Contact Drive Chains wear/lubrication
Sprockets wear/alignment
Idlers tension/alignment
Transmissions/shafts/chains. . . wear/lubrication
Shear Pins replenish
Point Row Clutches. operation
Contact Drive Tires pressure

ELECTRICAL & SEED MONITOR

Wiring Harnesses
Routing secure as needed
Cables and Connections damage/corrosion
Control Console Functions verify operation
Sensors (Electronic Seed Monitor)
Magnetic/Radar Distance Sensorsoperation/damage
Seed Tube Sensors operation/damage
Shaft Rotation Sensors operation/damage

FERTILIZER EQUIPMENT

Diaphragm Pump
Oil level check/replace
Diaphragms condition

Piston Pump

Case/Hose Connections condition
Oil Level. check/replenish
Drive Chain and Tires condition/lubrication

Hoppers, Tanks, and Delivery Hoses

Hoppers. condition/lubrication
Tanks and Valves. condition
Hoses. condition/attachment
Drive Chain alignment/lubrication
Flow Switch. condition/clean
Filters clean

Openers

Bearings wear/failure
Disc Blade wear
Scrapers and Knives condition/adjust
Drop Tube condition/adjust

PARTS NEEDED

ROW UNITS

General

Mounting Plate and U-bolts tight
Parallel Arms/Bushings/Hardware . wear/damage
Down Pressure System missing/damage
Row Unit Shank condition

Double Disc Openers

Disc Blade replace if 14½” or less
Blade Contact shim adjustment
Bearings wear/failure

Gauge Wheels

Tires wear/damage
Wheel Arms wear/damage
Wheel-to-Blade Contact adjustment
Bearings wear/failure
Depth Adjustment inspect/adjust
Lubrication refer to manual

No-Till Coulters/Attachments

Depth align/adjust
Disc Blade replace if 14½” or less
Bearings wear/failure
Residue Wheels and Bearings condition

Seed Hopper

Hopper and Lid wear/damage
Seed Hopper Latch adjust
Clutch meter drive alignment/lubrication
Chain Idler tension/alignment

Granular Chemical

Hopper and Lid wear/damage
Meter roller/gate/bushings
Clutch alignment
Chain tension/alignment/lubrication
Tubes and Banders condition

Closing Wheels

Tires and Wheels wear/damage
Hardware tighten
Bearings wear/failure
Springs missing/damage
Bushing and Eccentrics alignment

PARTS NEEDED

SEED METERS

True Speed High Speed Meter

Vac Seals wear/damage
Seed disc clean/wear
Ejector wheel clean and/or replace
Singulator clean and/or replace
Brush frayed, damaged or missing bristles
Brush wheel. frayed, damaged or missing bristles
Comb wear/damage
Belt flighting . . bent, damaged or missing bristles
Belt tensioning . . check tension (self-tensioning)
Idler Pulley wear/failure

True Rate Vacuum Seed Meter

Singulator clean and/or replace
Vacuum Seal wear/damage
Seed Discs clean/wear
Debris Ejector clean and/or replace
Stepper Motor Drive Gear inspect/replace

Finger Pickup Meter

Meter clean
Belt, Brush and Carrier Plate wear
Finger Assembly rust/wear/damage
Rolling Torque should be 22–25 in/Lbs
Seed Baffle wear/damage

Brush-Type Seed Meter & Brush-Type Seed Meter 2.0

Meter clean
Brushes frayed, damaged or missing bristles
Seed Disc wear
Wear Band groove/wear

DISPLAY/MONITOR

kinze.com/firmware
Blue Vantage software updated
AgLeader InCommand software updated
KPM III software updated

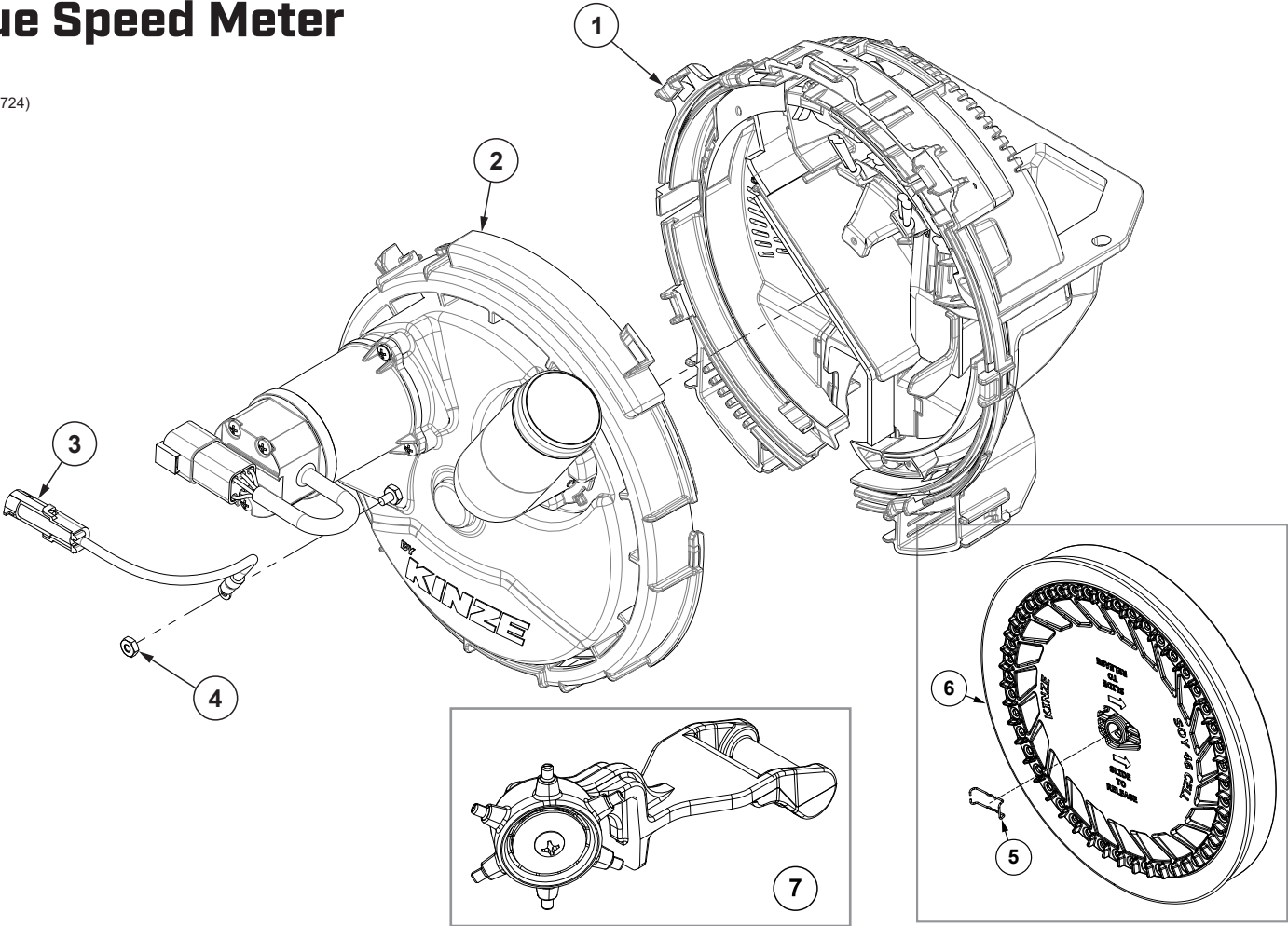
OTHER ATTACHMENTS

Yetter system check function/air leaks

PARTS NEEDED

True Speed Meter

(109724)

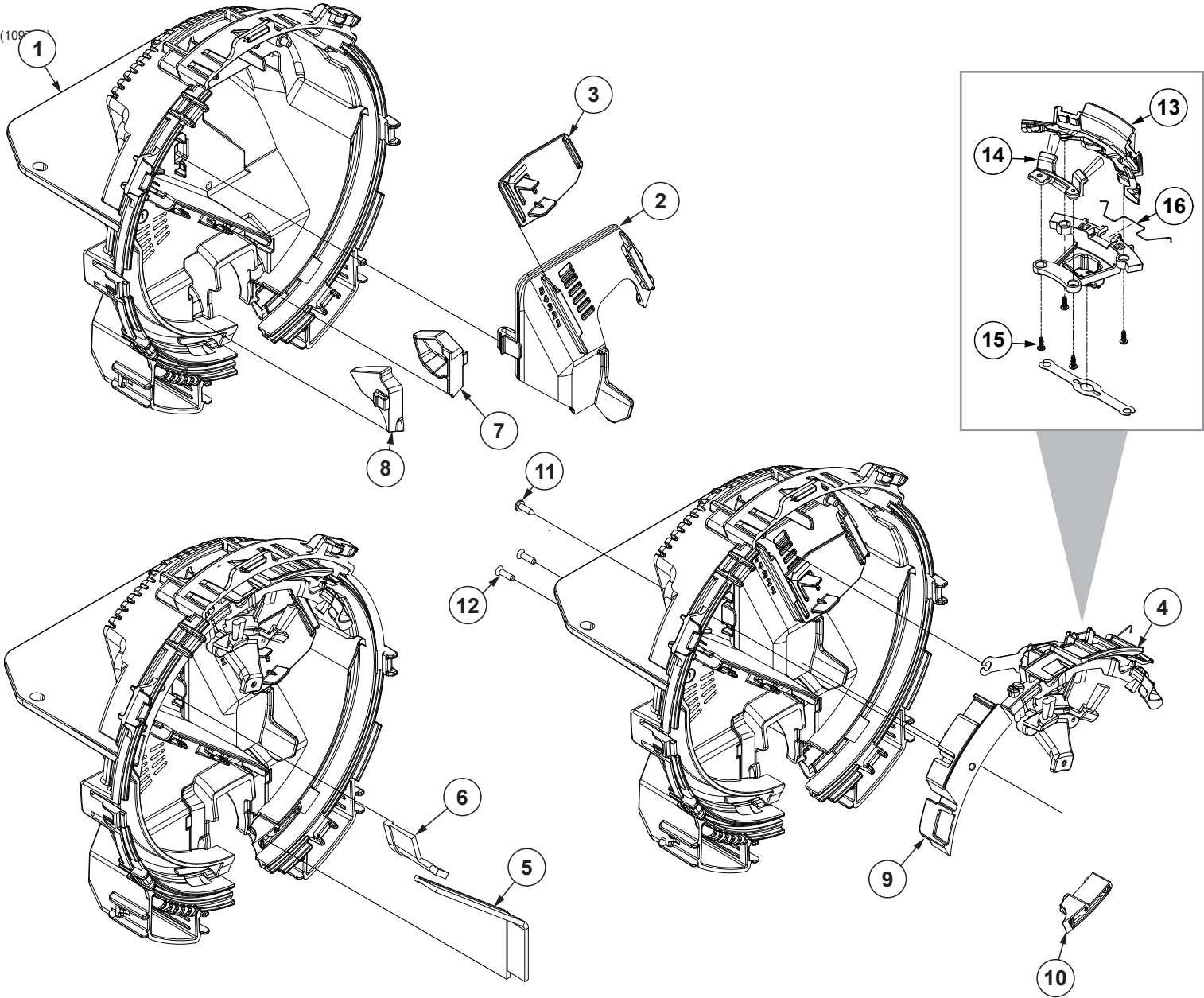


| ITEM | PART NO. | QTY. | DESCRIPTION |
|------|--|------|--|
| 1 | --- | | See "True Speed Meter Housing" |
| 2 | --- | | See "True Speed Meter Cover" |
| 3 | G10213501 | | True Speed ESD Ground Strap Harness |
| 4 | G10928 | | Hex Nut, No. 8-32, Stainless Steel |
| 5 | G10318701 | | Seed Disc Retention Clip (Included W/Item 6) |
| 6 | G10892X G10894X G10893X G10992X G10860X G11124X | | Seed Disc, Corn, 32 Cell (Light Blue Color-Coded) and Ejector Assembly Seed Disc, Soybean, 46 Cell (Black Color-Coded) and Ejector Assembly Seed Disc, Soybean, 92 Cell (Black Color-Coded) and Ejector Assembly Seed Disc, Cotton, 46 Cell (Green Color-Coded) and Ejector Assembly Seed Disc, Sugar Beets/Milo, 46 Cell (Orange Color-Coded) and Ejector Assembly Seed Disc, Sunflower, 23 Cell (Yellow Color-Coded) and Ejector Assembly |
| 7 | G10177501 G10177701 G10177601 GA27002 GA27023 G10618501 | | Ejector Assembly, 32 Cell Corn (Included W/G10892X) Ejector Assembly, 46 Cell Soybean (Included W/G10894X) Ejector Assembly, 92 Cell Soybean (Included W/G10893X) Ejector Assembly, 46 Cell Cotton (Included W/G10992X) Ejector Assembly, 46 Cell Sugar Beets (Included W/G10860X) Ejector Assembly, 23 Cell Sunflower (Included W/G11124X) |
| A | G11400X | | True Speed Meter W/Driver Assembly, Items 1-4 |

True Speed Meter Wear Life Expectancy

| Item | Life Expectancy |
|---------------|---------------------|
| Singulator | 500 acres per row |
| Seed Disc | 1,000 acres per row |
| Ejector Wheel | 500 acres per row |
| Brush Wheel | 500 acres per row |

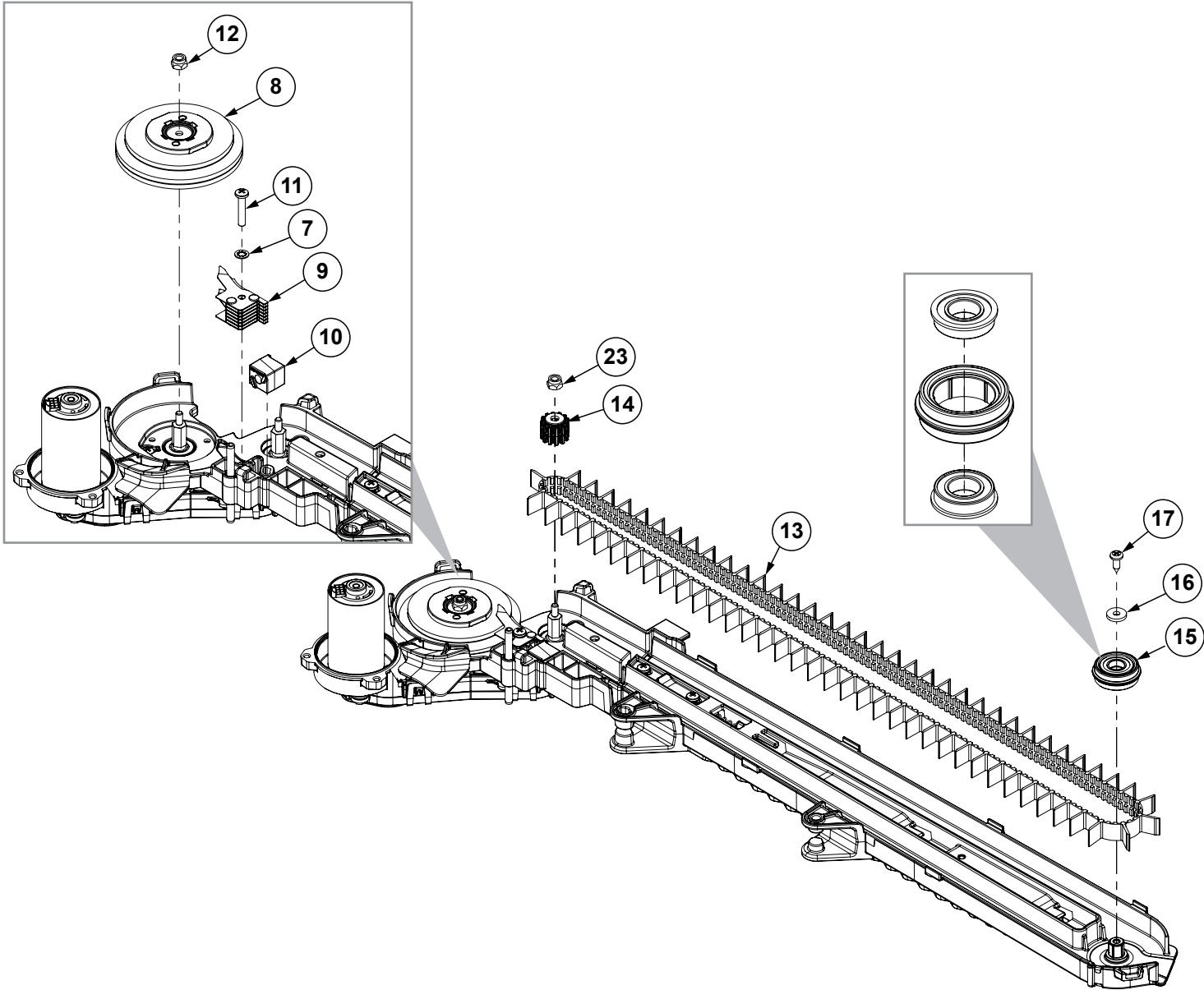
True Speed Meter Housing



| ITEM | PART NO. | QTY. | DESCRIPTION |
|------|-----------|------|--|
| 1 | G10208401 | | Meter Housing |
| 2 | GB1275 | | Meter Baffle |
| 3 | GB1276 | | Door Baffle |
| 4 | GA27013 | | Singulator Assembly (Includes Items 13-14) |
| 5 | GD36954 | | Meter Wall Brush, Large |
| 6 | G10459801 | | Meter Wall Brush, Small |
| 7 | GB1307 | | Meter Housing Plug |
| 8 | GB1306 | | Meter Housing Plug |
| 9 | G10153101 | | Upper Seed Relief Insert |
| 10 | G10949902 | | Lower Seed Relief Insert |
| 11 | G11556 | | Phillips Pan Head Tapping Screw, 6-19 x ½" |
| 12 | G10181201 | | Phillips Pan Head Tapping Screw, No. 6-19 x ½" |
| 13 | GA27015 | | Outer Singulator Brush (Included W/Item 4) |
| 14 | GA27014 | | Inner Singulator Brush (Included W/Item 4) |
| 15 | G11619 | | Phillips Pan Head Tapping Screw, No. 6-19 x ⅜" |
| 16 | G10320201 | | Singulator Spring |

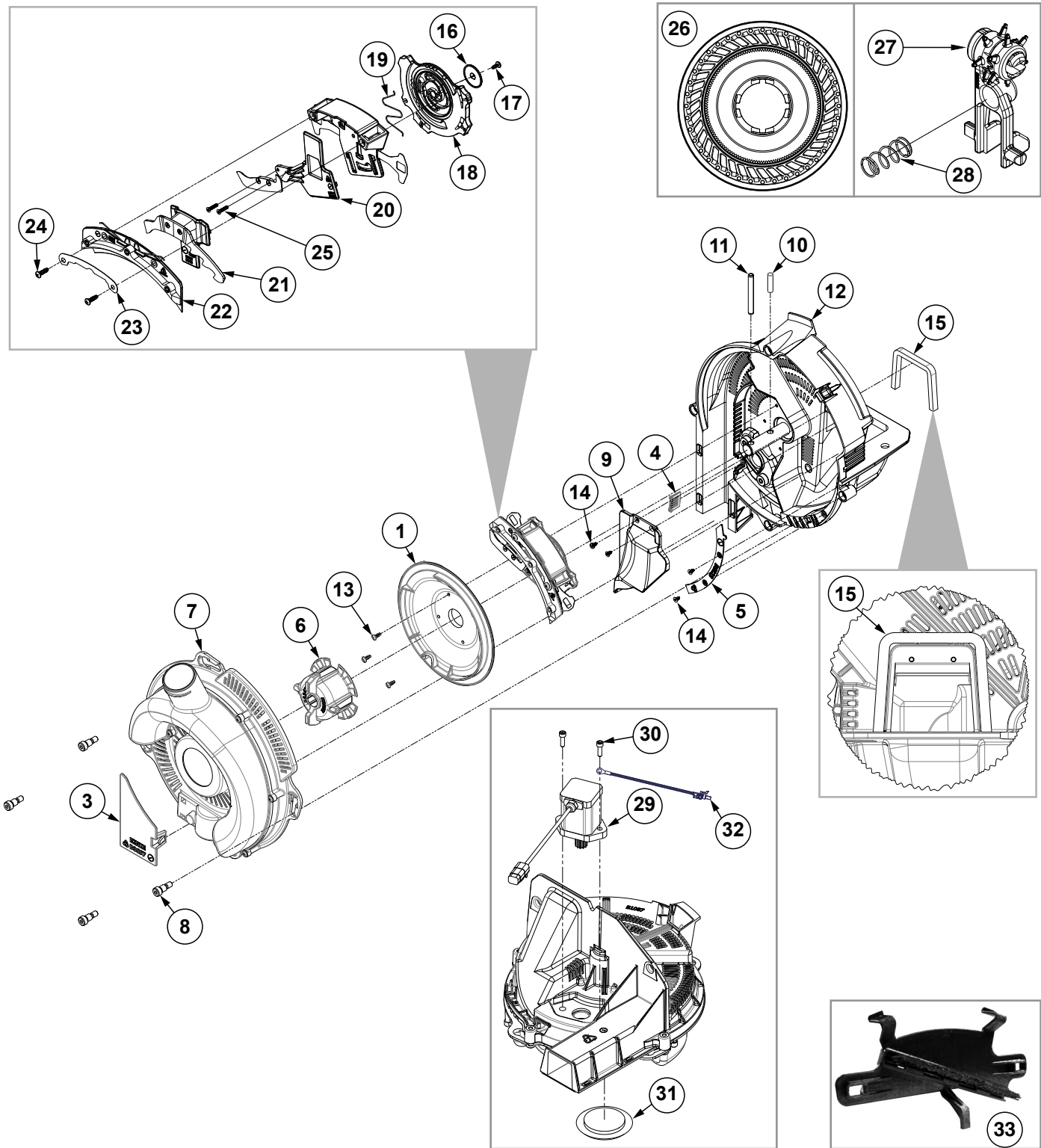
True Speed Meter Delivery System Assembly

(A27001)



| ITEM | PART NO. | QTY. | DESCRIPTION |
|------|-----------|------|---|
| 7 | G11995 | | Internal Tooth Washer, No. 8, Stainless Steel |
| 8 | GA27005 | | Brush Wheel Assembly |
| 9 | GA27004 | | Brush Wheel Comb Assembly |
| 10 | GB1257 | | Seed Relief Scrubber |
| 11 | G10425701 | | Phillips Pan Head Machine Screw, No. 8-32 x ¾", Black Oxide |
| 12 | G11202 | | Lock Nut W/Nylon Insert, No. 8-32, Stainless Steel |
| 13 | GB1256 | | Seed Delivery Belt |
| 14 | G10218301 | | Belt Drive Sprocket |
| 15 | GA27134 | | Seed Delivery Idler Pulley Assembly |
| | GB1255 | | Seed Deliver Idler Pulley (Included W/GA27134) |
| 16 | G10425501 | | Washer, 12 MM O.D. x 4.3MM I.D. x 1MM |
| 17 | G10425401 | | Phillips Flat Head Tapping Screw, No. 8-18 x ½" |
| 23 | G11729 | | Hex Lock Nut, No. 6-32 |

True Rate Vacuum Seed Meter



Vacuum Meter Wear Life Expectancy

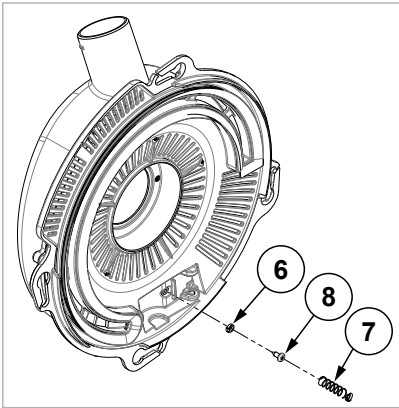
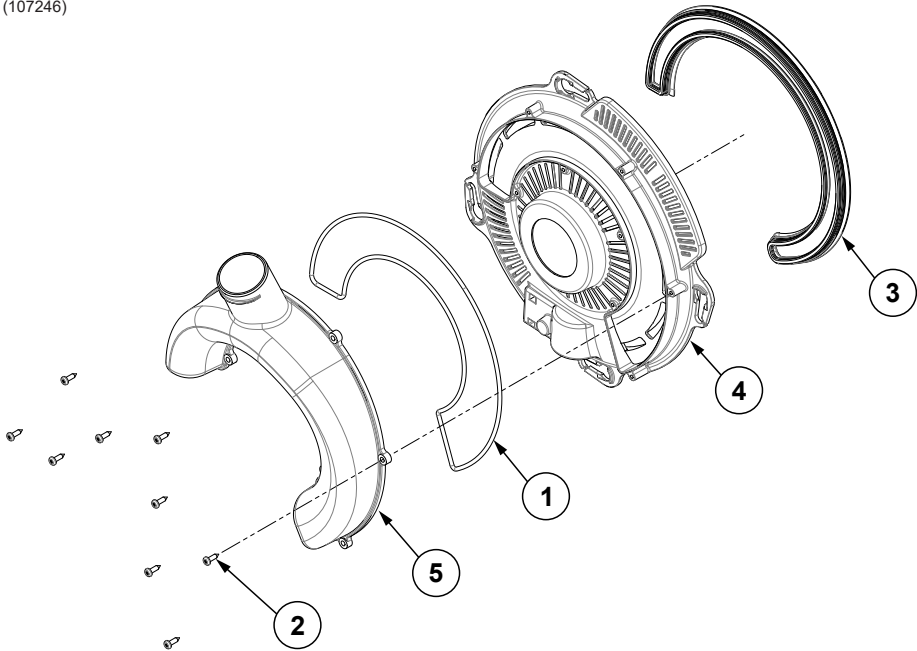
| Item | Life Expectancy |
|------------|-----------------------|
| Singulator | 600-900 acres per row |
| Seed Disc | 600-900 acres per row |
| Seal | 600-900 acres per row |
| Ejector | 250-500 acres per row |

True Rate Vacuum Seed Meter (cont'd)

| ITEM | PART NO. | QTY. | DESCRIPTION |
|------|--|------|--|
| 1 | G10950601 | | Shield |
| 2 | --- | | --- |
| 3 | GB0697 | | Chute Cover |
| 4 | GB0780 | | Brush |
| 5 | GB0823 | | Baffle |
| 6 | GB1147 | | Disc Hub |
| 7 | --- | | See "True Rate Meter Cover Assembly" |
| 8 | G11172 | | Hex Socket Head Shoulder Screw, ¼"-20 x ¾", Stainless Steel |
| 9 | G10950501 | | True Rate Baffle |
| 10 | G11448 | | Pin, ¼" x 1" |
| 11 | G10475 | | Spring Pin, ¼" x 2¼" |
| 12 | G10958801 GA16701 | | Meter Housing W/Bearing Bearing (Included W/G10958801) |
| 13 | G11965 | | Torx Pan Head Tapping Screw, No. 6-19 x ⅜" |
| 14 | G11618 | | Torx Flat Head Tapping Screw, No. 6-19 x ¼" |
| 15 | GD34774 | | Meter Gasket |
| 16 | GB0810 | | Singulator Adjustor Retainer |
| 17 | G11517 | | Phillips Pan Head Tapping Screw, 6-19 x ⅝" |
| 18 | GB0957 | | Singulator Adjustor |
| 19 | GD26960 | | Wire Form Spring |
| 20 | GB0921 | | Lower Blade |
| 21 | GB0958 | | Outer Blade |
| 22 | GA24676 | | Singulator Guide Assembly |
| 23 | GD29657 | | Retainer |
| 24 | G11578 | | Phillips Pan Head Tapping Screw, No. 8-18 x ½" |
| 25 | G11693 | | Torx Flat Head Machine Screw, No. 4-40 x ½" |
| 26 | G11152X G11047X G11154X G11153X G11105X G11106X G11107X GB1237 GB1231 G11048X G11042X G11332X | | Seed Disc, Corn (40 Cell) Light Blue Color-Coded, Ejector Wheel, and Spring Seed Disc, Soybean (120 Cell) Black Color-Coded, Ejector Wheel, and Spring Seed Disc, Sugar Beets/Milo, Dark Orange Color-Coded, Ejector Wheel, and Spring Seed Disc, Sunflower (40 Cell) Gray Color-Coded, Ejector Wheel, and Spring Seed Disc, Cotton (60 Cell) Green Color-Coded, Ejector Wheel, and Spring Seed Disc, Black Turtle, Navy Edible Bean and Popcorn (60 Cell) Brown Color-Coded, Ejector Wheel, and Spring Seed Disc, Pinto, Great Northern Edible Beans, and Soybean (60 Cell) Dark Blue Color Coded, Ejector Wheel, and Spring Anti-Static Blank Seed Disc Blank Seed Disc Seed Disc, Soybean (60 Cell) Black Color-Coded Seed Disc, Wheat (54 Cell) Purple Color-Coded Seed Disc, Wheat (231 Cell) Red Color-Coded, Ejector Wheel, Spring, and Wheat Brush Singulator (Item 42) |
| 27 | G10665101 G10483401 G10665001 G10664901 G10614301 G10483201 GA26989 G10936101 | | Ejector Arm, Corn Ejector Arm, Soybean (120 Cell) Ejector Arm, Sunflower Ejector Arm, Beets/Milo Ejector Arm, Black Turtle, Navy, Pinto, Great Northern Edible Bean, Popcorn Ejector Arm, Soybean (60 Cell) Ejector Arm, Wheat (54 Cell) Ejector Arm, Wheat (231 Cell) |
| 28 | G10483101 | | Compression Spring |
| 29 | G10494201 | | Meter Stepper Motor |
| 30 | G11588 | | Hex Socket Head Cap Screw, No. 10-24 x ⅝" |
| 31 | GD29425 | | Dust Cap |
| 32 | GA20711 | | Seed Meter Motor ESD Drain Harness |
| 33 | G10983301 G10983101 G10983201 | | Wheat Brush Singulator Assembly Wheat Brush Mount (Included W/G10983301) Brush (Included W/G10983301) |

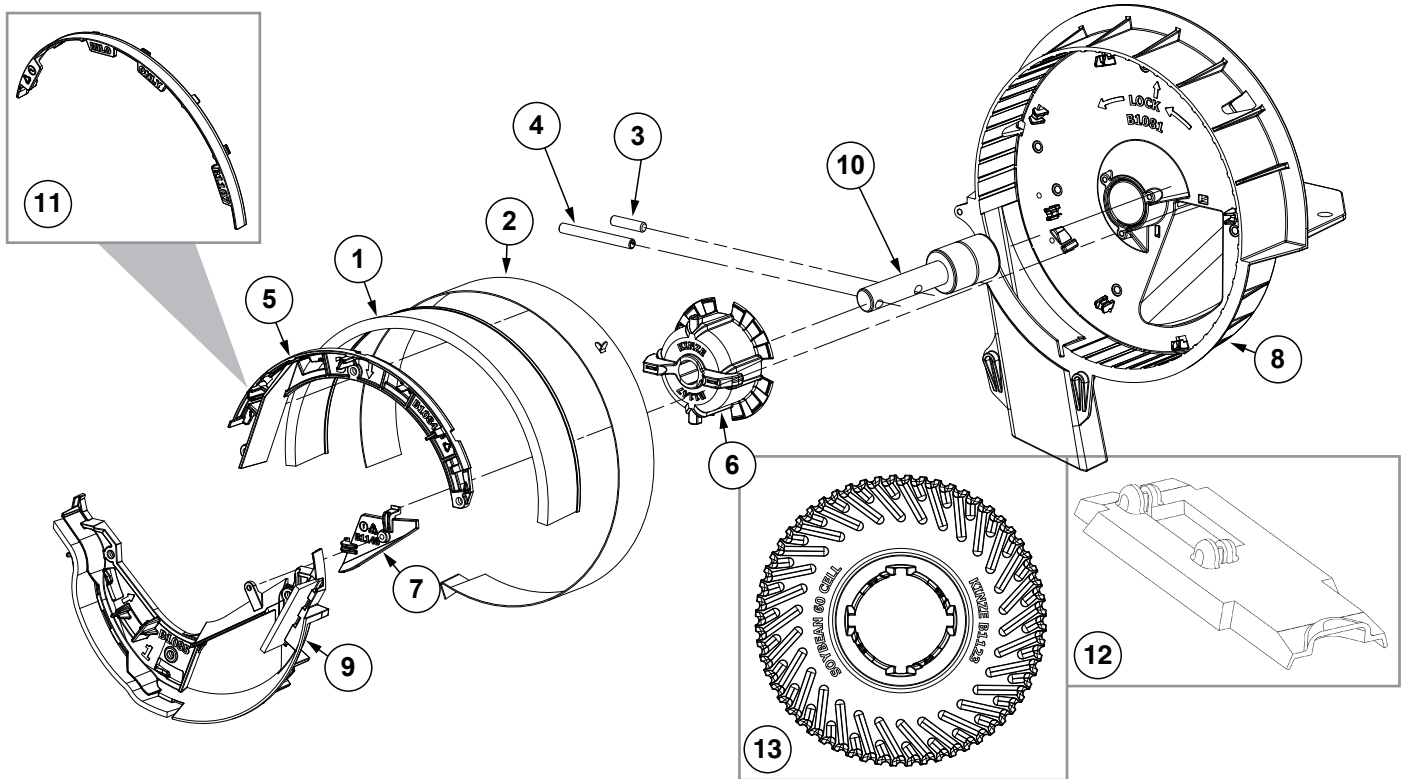
True Rate Vacuum Meter Cover Assembly

(107246)



| ITEM | PART NO. | QTY. | DESCRIPTION |
|------|-----------|------|--|
| 1 | GD26593 | | Gasket Housing |
| 2 | G11556 | | Phillips Pan Head Tapping Screw, 6-19 x 1/2" |
| 3 | GB0676 | | Lip Seal |
| 4 | GB0920 | | Cover |
| 5 | G11061301 | | Vacuum Inlet, True Rate |
| 6 | GB0907 | | Retainer Spring |
| 7 | G10483101 | | Ejector Spring |
| 8 | G11619 | | Phillips Pan Head Tapping Screw, No. 6-19 x 3/8" |

Brush-Type Seed Meter 2.0

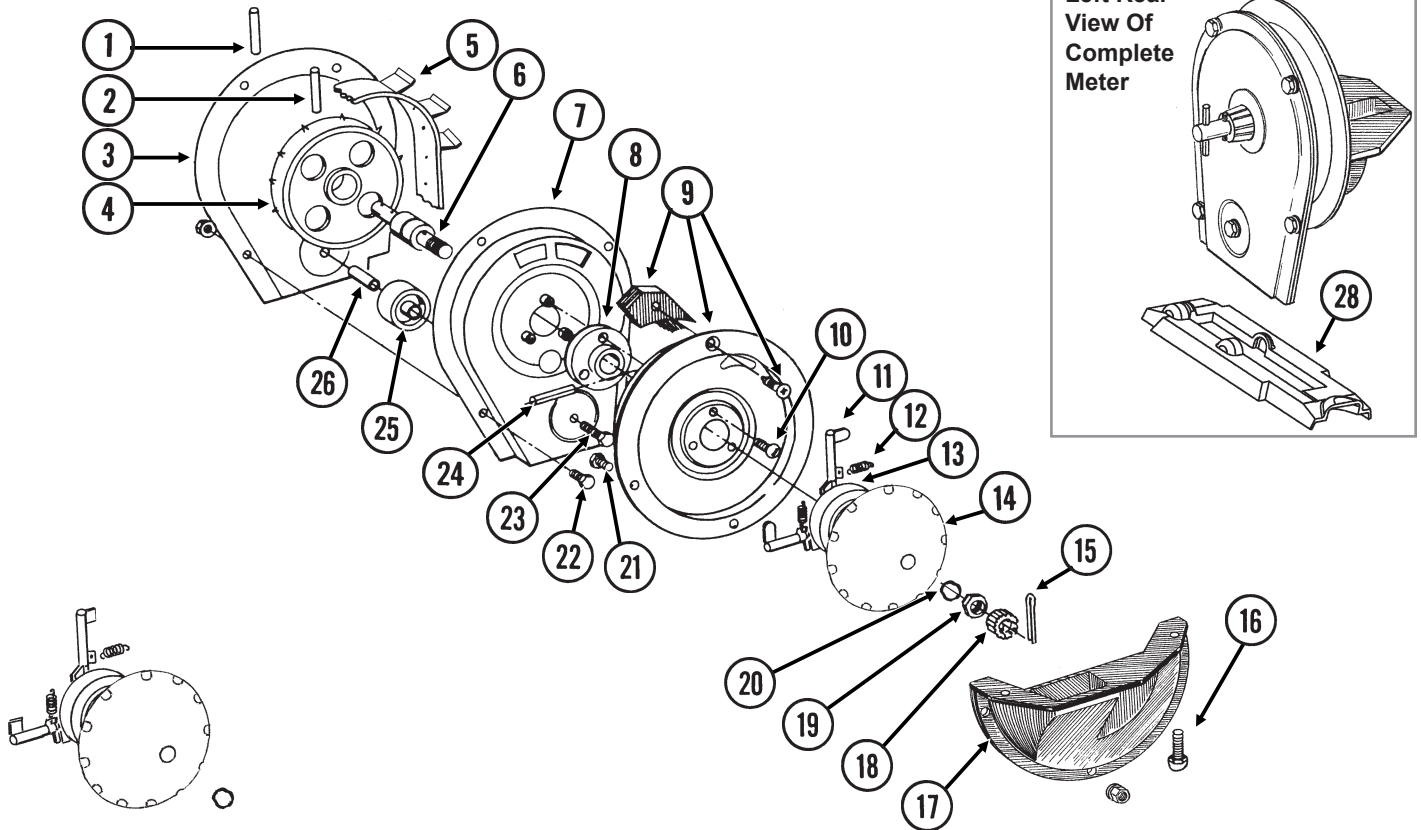


| ITEM | PART NO. | QTY. | DESCRIPTION |
|------|------------|------|--|
| 1 | GA5699 | | Upper Brush |
| 2 | GD8778 | | Wear Strip |
| 3 | G11448 | | Pin, ¼" x 1" |
| 4 | G10475 | | Spring Pin, ¼" x 2¼" |
| 5 | GB1084 | | Upper Brush Retainer (Used W/Soybean and Wheat Discs) |
| 6 | GB1147 | | Disc Hub |
| 7 | GB1148 | | Lower Retainer Wall |
| 8 | GB1081 | | Brush Meter Housing |
| 9 | GA24956 | | Lower Brush Retainer Assembly |
| | GB1085 | | Lower Brush Retainer (Included W/GA24956) |
| | GD34021-02 | | Brush, 6" (Included W/GA24956) |
| | GD35784-01 | | Brush, 2" (Included W/GA24956) |
| 10 | GA5698 | | Bearing |
| 11 | GB1107 | | Upper Brush Retainer (Used W/Milo/Grain Sorghum Discs) |
| 12 | GD15699 | | Shank Cover, Brush-Type Seed Meter |
| 13 | GB1123 | | Seed Disc, Soybean, 60 Cell, Black Color-Coded |
| | GB1171 | | Seed Disc, Soybean, 54 Cell, Dark Gray Color-Coded |
| | GB1124 | | Seed Disc, Soybean, 48 Cell, Dark Blue Color-Coded |
| | GB1130 | | Seed Disc, Small Milo/Grain Sorghum, 30 Cell, Orange Color-Coded |
| | GB1131 | | Seed Disc, Large Milo/Grain Sorghum, 30 Cell, Light Blue Color-Coded |
| | GB1132 | | Seed Disc, High Rate Small Milo/Grain Sorghum, 60 Cell, Red Color-Coded |
| | GB1133 | | Seed Disc, High Rate Large Milo/Grain Sorghum, 60 Cell, Yellow Color-Coded |
| | GB1134 | | Seed Disc, Wheat, 54 Cell, Purple Color-Coded |
| A | 700-01339 | - | Brush Meter 2.0 (Items 1-11) |

Brush Meter Wear Life Expectancy

| Item | Life Expectancy |
|---------------------------|-----------------------|
| Seed Disc | 100-200 acres per row |
| Upper Brush | 120-400 acres per row |
| Lower Brush | 240-800 acres per row |
| Stainless Steel Wear Band | 240-800 acres per row |

Finger Pickup Seed Meter



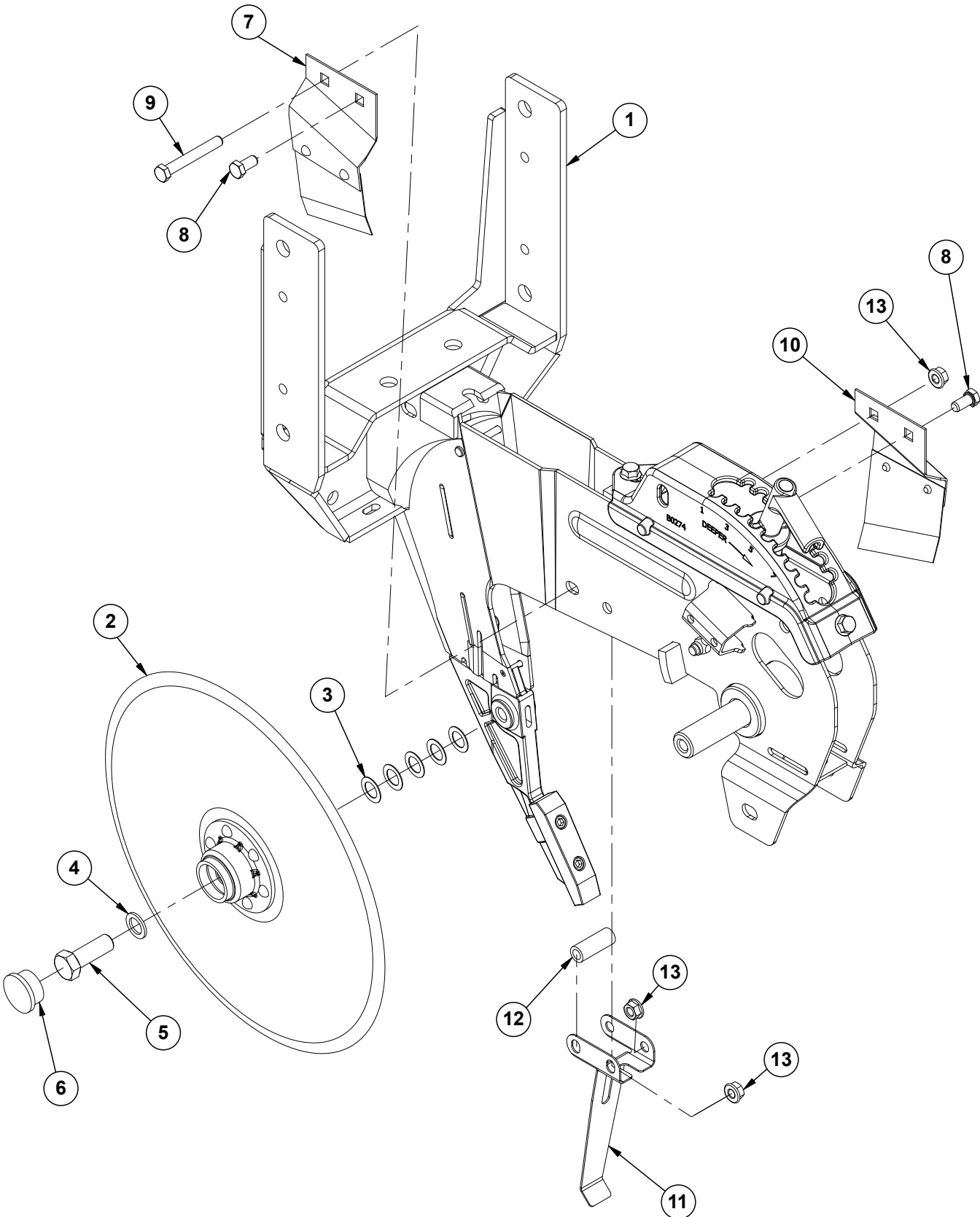
| ITEM | PART NO. | QTY. | DESCRIPTION |
|------|-----------|------|---|
| 1 | G10602 | | Spring Pin, ¼" x 1½" |
| 2 | G10604 | | Spring Pin, ⅜" x 1½" |
| 3 | G10429301 | | Housing Cover |
| 4 | GD1041 | | Belt Drive Sprocket |
| 5 | GD11286 | | Seed Belt |
| 6 | GA2019 | | Bearing |
| 7 | G10429101 | | Conveyor Housing |
| 8 | GB0110 | | Bearing Housing |
| 9 | GR1569 | | Carrier Plate W/Brush and Screw (Corn) |
| | GR0664 | | Carrier Plate W/Brush and Screw (Sunflower) |
| | GA2020 | | Brush |
| | G10690 | | Rolling Thread Screw, No. 10 x ¾" |
| 10 | G10401 | | Slotted Hex Washer Head Screw, No. 10-32 x ⅝" |
| 11 | GD18704 | | Finger, Corn |
| 12 | GD19790 | | Spring |
| 13 | GB0410 | | Cam |
| 14 | GD11528 | | Finger Holder |
| 15 | G10470 | | Cotter Pin, ⅝" x 1" |
| 16 | G11009 | | Locking Thumbscrew, ⅝"-18 x ¾" |
| 17 | GD36922 | | Seed Baffle |
| 18 | GD1083 | | Cover Nut |
| 19 | G10500 | | Jam Nut, ⅝"-18 UNF |
| 20 | GA8343 | | Wave Washer, ⅝" (Triple Wave) |
| 21 | G10020 | | Hex Head Cap Screw, ¼"-20 x ⅝" |
| | G10323 | | Hex Flange Nut, ¼"-20, No Serrations |
| 22 | G10022 | | Hex Head Cap Screw, ¼"-20 x ½" |
| | G10621 | | Serrated Flange Nut, ¼"-20 |

Finger Pickup Seed Meter (cont'd)

| ITEM | PART NO. | QTY. | DESCRIPTION |
|------|-----------|------|---|
| 23 | G10021 | | Hex Head Cap Screw, ¼"-20 x 1½" |
| | G10621 | | Serrated Flange Nut, ¼"-20 |
| 24 | G10603 | | Spring Pin, ¼" x 1¼" |
| 25 | GD1042 | | Idler |
| 26 | GB0120 | | Bushing, 7⁄64" I.D. x 1½" Long |
| 27 | GD19333 | | Finger, Oil Sunflower |
| 28 | GD15698 | | Shank Cover, Finger Pickup Seed Meter |
| 29 | GD11787 | | Half Rate Blank Finger |
| A | GR1848 | | Finger Assembly, Corn (Items 11-14 and 20) |
| B | GR2154 | | Finger Assembly, Oil Sunflower (Items 12, 14, 20, 27, and 30) |
| C | 700-01078 | | Corn Meter Assembly (Items 1-26 and 28) |

| Finger Pickup Meter Life Expectancy | |
|---|------------------------------|
| Item | Life Expectancy |
| Brush #3 | 100-200 acres per row |
| Carrier Plate #3 | 120-400 acres per row |
| Fingers & Springs #4, #5 | 240-800 acres per row |
| Drive Belt Sprocket, #10 | 240-800 acres per row |
| Seed Belt #1, Belt Housing & Belt Housing Cover | Inspect for damage or cracks |

3005 Series Row Unit - 15" Seed Opener Disc Blade/Bearing Assembly and Scrapers

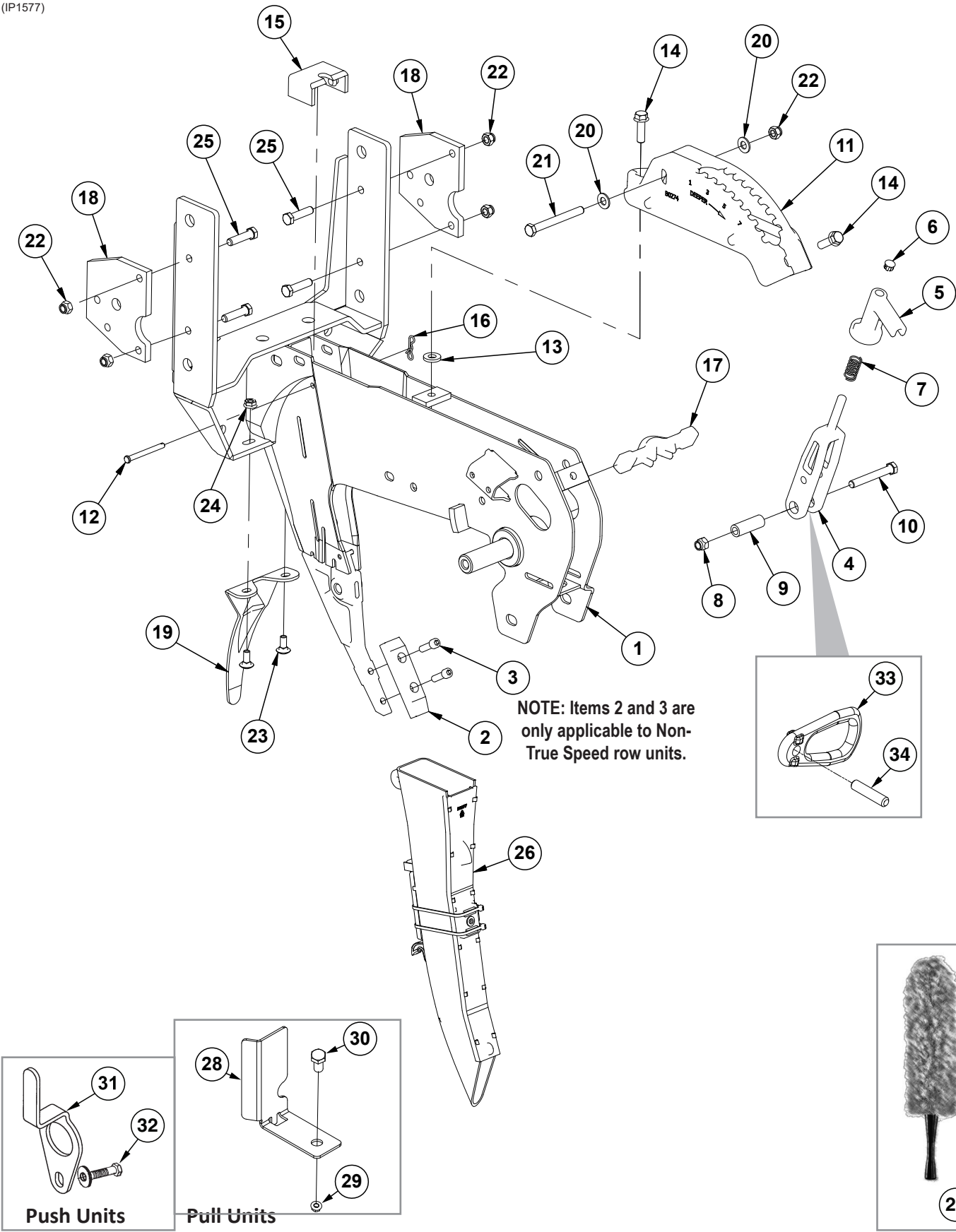


3005 Series Row Unit - 15" Seed Opener Disc Blade/Bearing Assembly and Scrapers (cont'd)

| ITEM | PART NO. | QTY. | DESCRIPTION |
|------|---|------|---|
| 1 | G10037301 | | See "Shank Assembly, Seed Tube, and Depth Adjustment |
| 2 | G10018801 GA26920 GD11306 GD36860 GD36990 | | Disc and Bearing Assembly Bearing (Included W/G10018801) Disc Blade, 3.5 mm x 15" (Included W/G10018801) Bearing Housing (Included W/G10018801) Rivet, ¼" x ⅜" (Included W/G10018801) |
| 3 | GD30725 | | Machine Bushing, ⅝" (.030" Thick) (5 Per) |
| 4 | G10397801 | | Special Machine Bushing, ⅝" x 1" O.D. |
| 5 | GD36856 G10005 | | Opener Blade Bolt, ⅝"-11 x 1¾", Grade 5 Hex Head Cap Screw, ⅝"-11 x 1¾" |
| 6 | G10090401 | | Plastic Ribbed Hub Cap (1 Per) |
| 7 | GA2012L | | Disc Scraper, L.H. |
| 8 | G10002 | | Hex Head Cap Screw, ⅝"-16 x ¾" |
| 9 | G10325 | | Hex Head Cap Screw, ⅝"-16 x 2¾" |
| 10 | GA2012R | | Disc Scraper, R.H. |
| 11 | GD35444 | | Seed Tube Bracket |
| 12 | GD2971-31 | | Sleeve, ⅝" I.D x ⅝" O.D. x 1.78" Long |
| 13 | G10622 | | Serrated Flange Nut, ⅝"-16 |

3005 Series Row Unit - Shank Assembly, Seed Tube and Depth Adjustment

(IP1577)

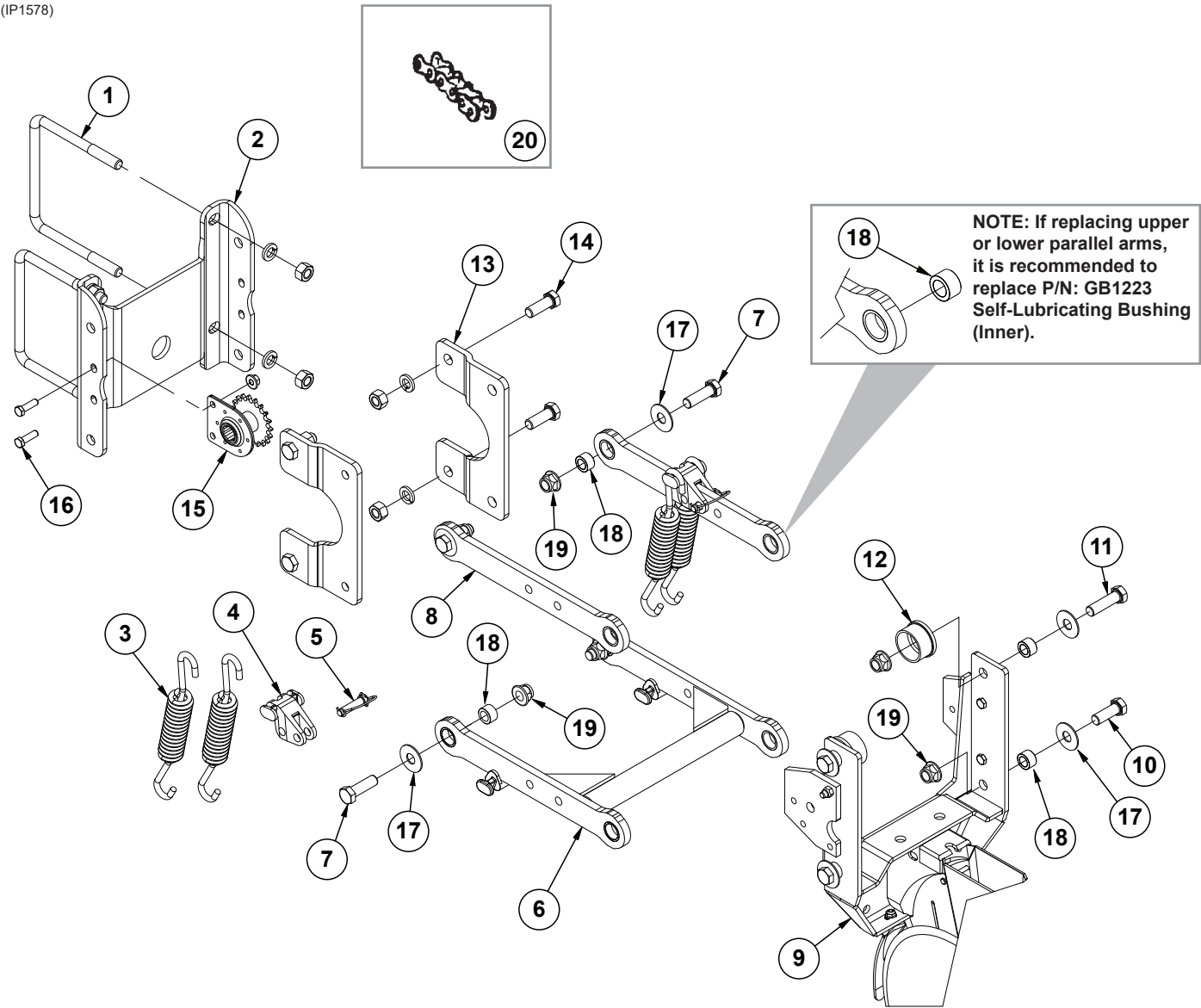


3005 Series Row Unit - Shank Assembly, Seed Tube and Depth Adjustment - (cont'd)

| ITEM | PART NO. | QTY. | DESCRIPTION |
|------|---|------|---|
| 1 | GA10157 G10258402 GD11001 G10438 | | Shank W/Gauge Wheel Pivot Spindle and Set Screw (Non-True Speed) Shank W/Gauge Wheel Pivot Spindle and Set Screw (True Speed) Spindle Hex Head Cap Screw, ½"-13 x ¾" |
| 2 | G10038601 | | Scraper |
| 3 | G10500901 | | Hex Socket Head Cap Screw, ⅝"-18 x 1" |
| 4 | GB0267 | | Lever, Depth Adjustment |
| 5 | GB0266 | | Handle, Depth Adjustment |
| 6 | GD3612 | | Cap Plug |
| 7 | GD10993 | | Spring |
| 8 | G11591 | | Hex Lock Nut, ⅜"-24, Grade C |
| 9 | GD11259 | | Sleeve, ⅜" I.D. x ⅝" O.D. x 1 ²⁵ / ₃₂ " Long |
| 10 | G11592 | | Hex Head Cap Screw, ⅜"-24 x 2¾", Grade 8 |
| 11 | GB0274 | | Cover, Depth Adjustment |
| 12 | G10551 | | Clevis Pin, ¼" x 2 ½" |
| 13 | G10207 | | Washer, ⅞" O.D. x 1 ³ / ₃₂ " I.D. x .134" (If Applicable) |
| 14 | G11015 | | Hex Washer Head Cap Screw, ⅜"-16 x 1¼" |
| 15 | GD16245 | | Sun Shade (Rubber) |
| 16 | G10122301 | | Bow Tie Cotter Pin |
| 17 | GB0265 | | Pivot Link, Depth Adjustment |
| 18 | GD24545 | | Row Unit Stop |
| 19 | GD28390 | | Shield |
| 20 | G11387 | | Flat Washer, ⅜" SAE |
| 21 | G10061 | | Hex Head Cap Screw, ⅜"-16 x 3 ½" |
| 22 | G10108 | | Lock Nut, ⅜"-16 |
| 23 | G10312 | | Carriage Bolt, ⅝"-18 x ¾" |
| 24 | G10620 | | Serrated Flange Nut, ⅝"-18 |
| 25 | G10003 | | Hex Head Cap Screw, ⅜"-16 x 1½" |
| 26 | G10745401 | | Seed Tube Assembly |
| 27 | G10475701 | | Seed Tube Brush, Microfiber |
| 28 | GD29798 | | Chain Guard |
| 29 | G10071 | | Serrated Flange Nut, ½"-13 |
| 30 | G10014 | | Hex Head Cap Screw, ½"-13 x 1" |
| 31 | GD17014 | | Hose Guide, Push Units |
| 32 | G10047 G11387 G10108 | | Hex Head Cap Screw, ⅜"-16 x 1¾" Flat Washer, ⅜" SAE Lock Nut, ⅜"-16 |
| 33 | GB0285 GA27146 | | Collar, Depth Adjustment (Non-Blue Vantage) Collar, Depth Adjustment (Blue Vantage) |
| 34 | G10402701 | | Pin, ⅜" x 1 ² / ₃ " |

3005 Series Row Unit - Parallel Arms, Mounting Support Plate, and Quick Adjustable Down Forces Springs Option

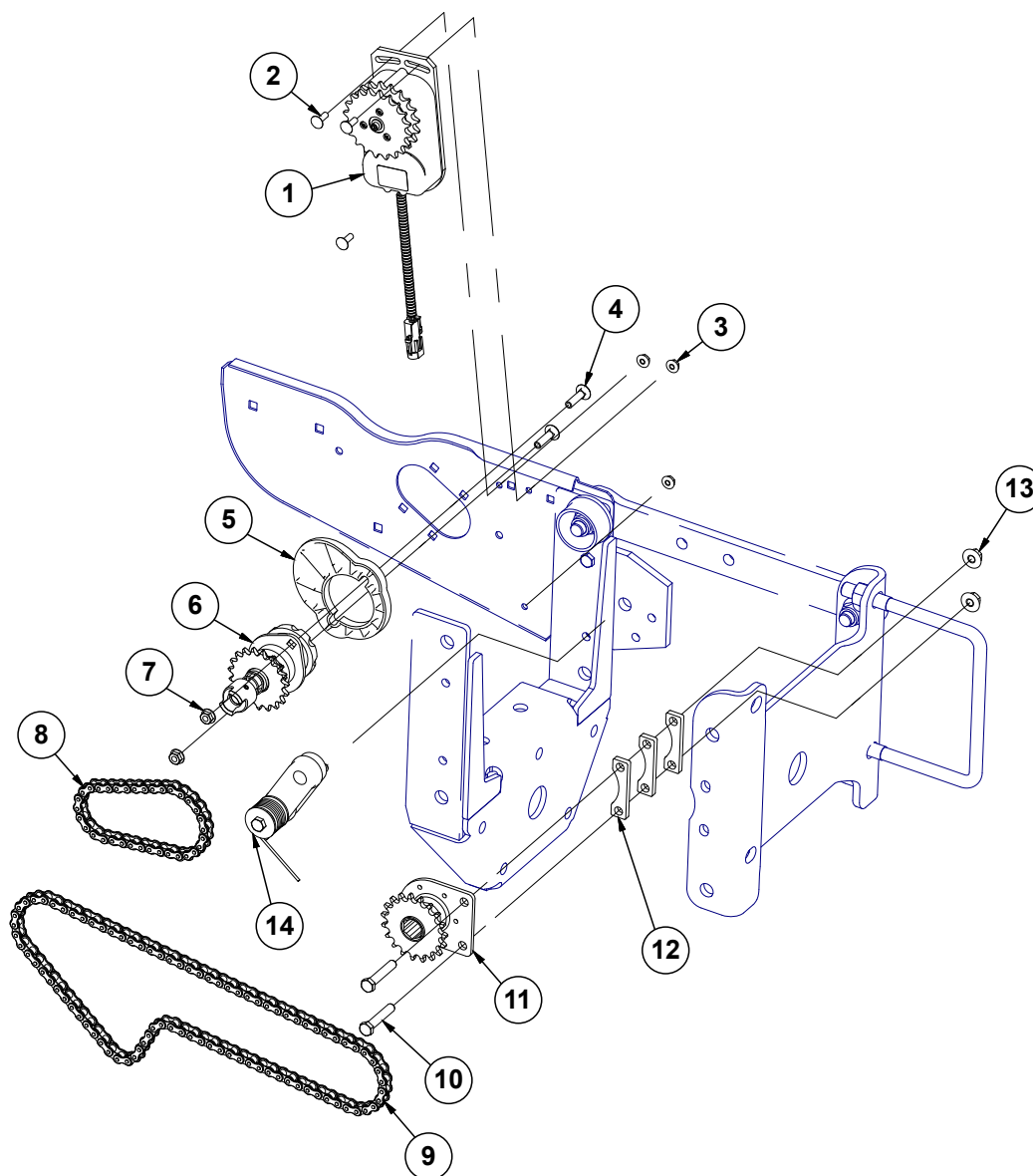
(IP1578)



3005 Series Row Unit - Parallel Arms, Mounting Support Plate, and Quick Adjustable Down Forces Springs Option (cont'd)

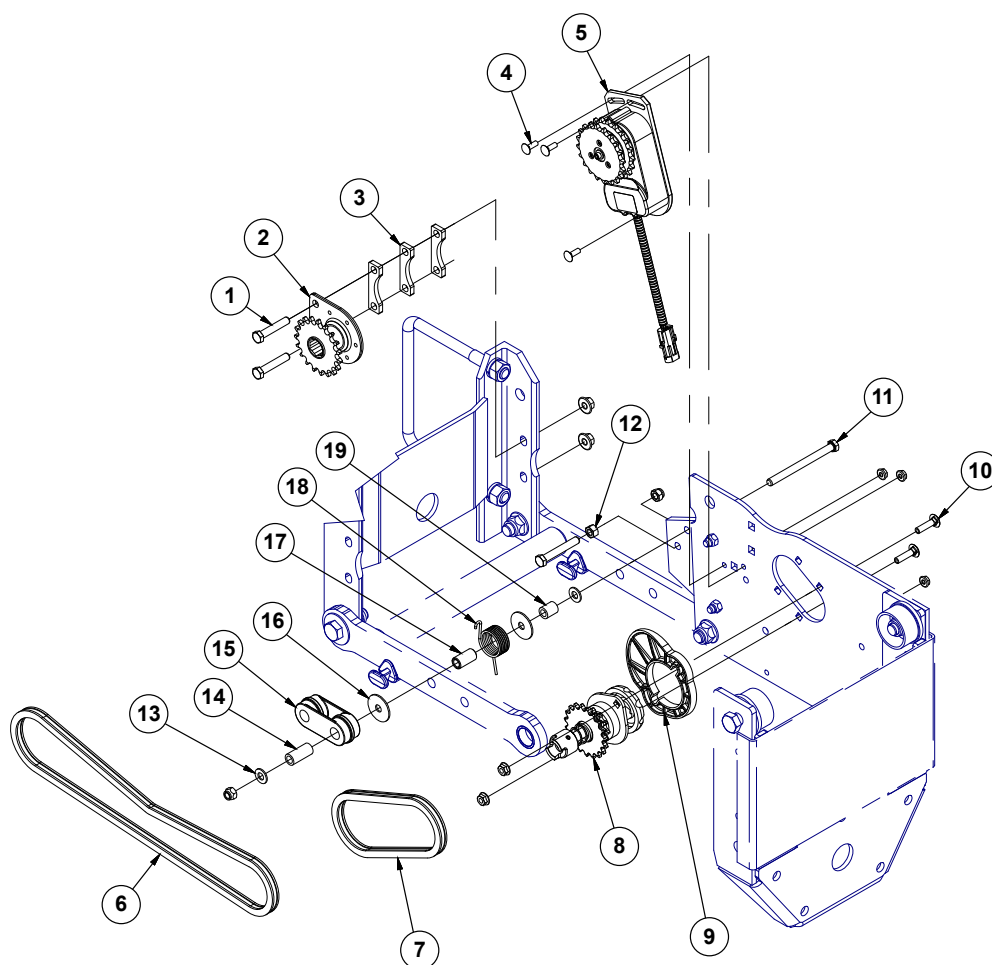
| ITEM | PART NO. | QTY. | DESCRIPTION |
|------|---|------|--|
| 1 | GD1113 G10230 G10104 | | U-Bolt, 5" x 7" x ⅝"-11 Lock Washer, ⅝" Hex Nut, ⅝"-11 |
| 2 | GD10036 | | Mounting Support Plate |
| 3 | GD21337 | | Heavy Duty Down Pressure Spring |
| 4 | GB0186 | | Spring Anchor |
| 5 | GD14217 | | Tab Lock Pin, 7/16" x 1½" |
| 6 | G10011201 GB1224 | | Lower Parallel Arm Assembly Self-Lubricating Bushing, 1¼" O.D. x 1" I.D. x ½" (Included in G10011201) |
| 7 | G10732 | | Hex Head Cap Screw, ⅝"-18 x 2" |
| 8 | G10011101 GB1224 | | Upper Parallel Arm Assembly Self-Lubricating Bushing, 1¼" O.D. x 1" I.D. x ½" (Included in G10011101) |
| 9 | --- | | See "Shank Assembly, Seed Tube, and Depth Adjustment" |
| 10 | G10751 | | Hex Head Cap Screw, ⅝"-18 x 1¾" |
| 11 | G10752 | | Hex Head Cap Screw, ⅝"-18 x 2¼" |
| 12 | GB0314 | | Hopper Mount |
| 13 | GB0366 | | Extension Bracket |
| 14 | G10751 G11976 G11514 | | Hex Head Cap Screw, ⅝"-11 x 1¾" Flat Washer, ⅝" x 1¾" Non-Serrated Flange Locknut, ⅝"-18 |
| 15 | GA1720 | | Bearing/Sprocket, ⅞" Hex Bore |
| 16 | G10004 G11091 | | Hex Head Cap Screw, ⅝"-16 x 1¼" Serrated Flange Nut, ⅝"-16 |
| 17 | G11976 | | Flat Washer, ⅝" x 1¾" |
| 18 | GB1223 | | Self-Lubricating Bushing |
| 19 | G11514 | | Lock Nut, ⅝"-18 |
| 20 | G3303-98 G3303-108 G3303-16 GR0196 | | Chain, No. 41, 98 Pitch Including Connector Link (Mechanical) Chain, No. 41, 108 Pitch Including Connector Link (Vacuum) Chain, No. 41, 16 Pitch Including Connector Link (Used W/Row Unit Extension Brackets) Connector Link, No. 41 |
| A | G6325X | | U-Bolt Package For 5" x 7" Toolbar, Includes: (2) GD1113, (4) G10230, (4) G10104 |
| B | G1K758 | | Pull Row Unit Parallel Arm Kit, Includes: (2) G10011101, (1) G10011201, (8) GB1223, (8) G11976, (4) G10732, (2) G10751, (2) G10752, (8) G11514, (1) IS1066 |

3005 Series Row Unit - Ag Leader Electric Clutch (Pull)



| ITEM | PART NO. | QTY | DESCRIPTION |
|------|-----------------------|-----|---|
| 1 | GA16374 | | Electric Clutch |
| 2 | G10310 | | Carriage Bolt, 1/4"-20 x 3/4", Grade 2 |
| 3 | G10621 | | Serrated Flange Nut, 1/4"-20 |
| 4 | G10338 | | Carriage Bolt, 5/16"-18 x 1 1/4" |
| 5 | G11013001 | | Clutch Adapter Plate |
| 6 | GA10151 GA20640 | | Seed Meter Clutch Assembly, 11/19 Tooth (Mechanical) Shown Seed Meter Clutch Assembly, 11/28 Tooth (Vacuum) |
| 7 | G10620 | | Serrated Flange Nut, 5/16"-18 |
| 8 | G3303-34 G3303-44 | | Chain, No. 41, 34 Pitch Including Connector Link (Mechanical) Chain, No. 41, 44 Pitch Including Connector Link (Vacuum) |
| 9 | G3303-88 G3303-103 | | Chain, No. 41, 88 Pitch Including Connector Link (Pull Row Unit) Shown Chain, No. 41, 103 Pitch Including Connector Link (4 Center Row Units Only) |
| 10 | G10048 | | Hex Head Cap Screw, 3/8"-16 x 2" |
| 11 | GA1720 | | Bearing/Sprocket, 3/8" Hex Bore |
| 12 | GD23774 | | Spacer |
| 13 | G11091 | | Serrated Flange Nut, 3/8"-16 |
| 14 | --- | | See Row Unit Idler |

3000 Series Row Unit - Ag Leader Electric Clutch (Push)



| ITEM | PART NO. | QTY | DESCRIPTION |
|------|--------------------|-----|--|
| 1 | G10048 G11091 | | Hex Head Cap Screw, 3/8"-16 x 2" Serrated Flange Nut, 3/8"-16 |
| 2 | GA1720 | | Bearing/Sprocket, 7/8" Hex Bore |
| 3 | GD23774 | | Spacer |
| 4 | G10310 G10621 | | Carriage Bolt, 1/4"-20 x 3/4", Grade 2 Serrated Flange Nut, 1/4"-20 |
| 5 | GA16374 | | Electric Clutch |
| 6 | G3303-78 | | Chain, No. 41, 78 Pitch Including Connector Link |
| 7 | G3303-41 | | Chain, No. 41, 41 Pitch Including Connector Link |
| 8 | GA10151 GA20640 | | Seed Meter Clutch Assembly, 11/19 Tooth (Mechanical) Seed Meter Clutch Assembly, 11/28 Tooth (Vacuum) |
| 9 | G11013001 | | Clutch Adapter Plate |
| 10 | G10338 G10620 | | Carriage Bolt, 5/16"-18 x 1 1/4" Serrated Flange Nut, 5/16"-18 |
| 11 | G10753 G10108 | | Hex Head Cap Screw, 3/8"-16 x 4 1/2" Lock Nut, 3/8"-16 |
| 12 | G10101 G10049 | | Hex Nut, 3/8"-16 Hex Head Cap Screw, 3/8"-16 x 2 1/2" |
| 13 | G11387 | | Flat Washer, 3/8" SAE |
| 14 | GD8893-01 | | Sleeve, 1 3/8" Long |
| 15 | GB0968 | | Drive Idler, Push Unit |
| 16 | G10201 | | Special Washer, 3/8" x 1 1/2" O.D. |
| 17 | GD1026 | | Sleeve, 1 3/16" |
| 18 | GD11218 | | Spring |
| 19 | GD2971-24 | | Sleeve, 3/4" |

NOTES

Lined area for notes.

Additional lines for notes.

Your Authorized Kinze Dealer



DEALER IMPRINT